



<b>Countries:</b>	CANADA, UNITED STATES, MEXICO	<b>Document ID:</b>	IK1201373
<b>Availability:</b>	ISIS, Bus ISIS, FleetISIS, IsSIR	<b>Revision:</b>	0
<b>Major System:</b>	ENGINES	<b>Created:</b>	6/15/2017
<b>Current Language:</b>	English	<b>Last Modified:</b>	7/3/2017
<b>Other Languages:</b>	NONE	<b>Author:</b>	Caleb Iverson
<b>Viewed:</b>	115		

[Less Info](#)

Hide Details

Coding Information

<b>Copy Link</b> 	<b>Copy Relative Link</b> 	<b>Bookmark</b>  <a href="#">View My Bookmarks</a>	<b>Add to Favorites</b> 	<b>Print</b> 	<b>Provide Feedback</b> 	<b>Helpful</b>  3	<b>Not Helpful</b>  0
----------------------	-------------------------------	--	-----------------------------	------------------	-----------------------------	-------------------------	-----------------------------

**Title:** 2CE PSI Propane Engine Exhaust Leak

**Applies To:** 2CE Buses equipped with 8.8L PSI Propane Engines

## **CHANGE LOG**

Please refer to the change log text box below for recent changes to this article:

07/05/2017 - Initial Article Release

## **DESCRIPTION**

This document will guide the user through diagnosing fuel trim faults related to leaks at the down pipe flanges on PSI 8.8L Propane engines.

## **SYMPTOM(s)**

**Diagnostic Trouble Code(s) & Dashboard Indicator Light(s):**

DTC/Light	Description
SPN 4237 FMI 15 (link to FCAP)	Bank 1 System Too Lean at Idle
SPN 4237 FMI 16 (link to FCAP)	Bank 1 System Too Lean
SPN 4239 FMI 15 (link to FCAP)	Bank 2 System Too Lean at Idle
SPN 4239 FMI 16 (link to FCAP)	Bank 2 System Too Lean
SPN 3050 FMI 18 (link to FCAP)	Bank 1 Catalyst System Efficiency Below Threshold
SPN 3051 FMI 18 (link to FCAP)	Bank 2 Catalyst System Efficiency Below Threshold

**Customer Observations or Concerns:**

Poor Fuel economy  
Audible Exhaust Leak  
Malfunction Indicator Light on


**SPECIAL TOOL(s) / SOFTWARE**


Tool Description	Tool Number	Comments	Instructions
Navistar Leak Locator	19-700-01		
Power Link			
EZ-Tech		or equivalent	

**SERVICE PARTS INFORMATION**

Kit Description	Part Number	Quantity Required	Notes
Clamp	4056344C1	2	
Gasket	4056345C1	2	
Missing Clamp Inspection			
Support clamp	4058639C1	2	Install only if missing
Support, Spacer-M6	4058645C1	1	Install only if missing
Nut, Lock Flange M8	40066R1	2	Install only if missing
Bolt M6 X 40	31049R1	1	Install only if missing
Bolt M8 X 20	3592828C1	2	Install only if missing
Nut, Hexagon M6	3544378C1	1	Install only if missing

**DIAGNOSTIC STEP(s)**

 <b>WARNING:</b>	
To prevent property damage, personal injury, and / or death, park vehicle on a hard, flat surface, turn the engine off, set the parking brake, and install wheel chocks to prevent the vehicle from moving in either direction.	

 <b>WARNING:</b>	
To prevent property damage, personal injury, and / or death, if the vehicle must be raised, do not work under the vehicle supported only by jacks. Jacks can slip or fall over.	

--



**WARNING:**

To prevent property damage, personal injury, and / or death, remove the ground cable from the negative terminal of the battery box before disconnecting any electrical components. Always connect the ground cable last.



**WARNING:**

To prevent personal injury and / or death, always wear safe eye protection when performing vehicle maintenance.

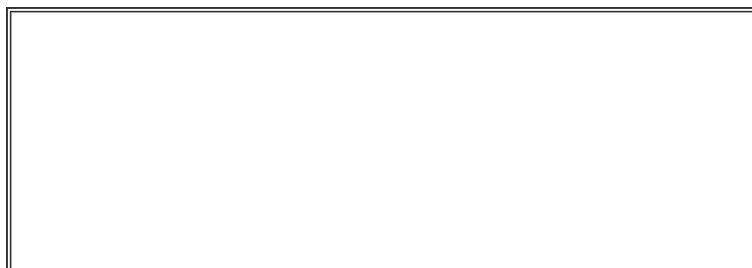


**WARNING:**

To prevent property damage, personal injury, and / or death, keep flames or sparks away from vehicle and do not smoke while servicing the vehicle's batteries. Batteries expel explosive gases.

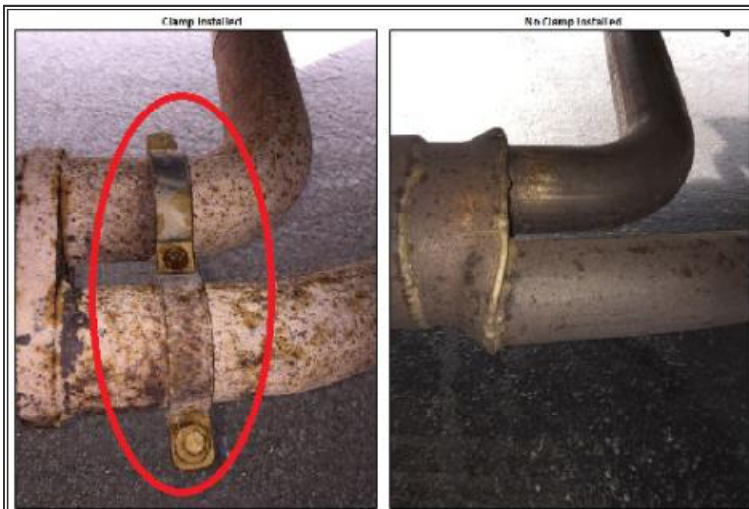
Step	Action	Decision
#1	<b>DIAGNOSTIC:</b> Verify fuel trim faults are active.  Are faults active?	Yes. Go to Step 2.
		No. Diagnostics complete.

Step	Action	Decision
#2	<b>DIAGNOSTIC:</b> Perform Navistar Leak Locator test on exhaust system.  1. Remove diffuser and install Navistar Leak Locator and inspect for leaks at down pipe connection on both banks. Reference Figure 1 for details.  2. While looking for leak inspect for exhaust support clamp see Figure 2, if missing install the parts listed in the parts section of this iKNOW.  Is there a leak present at one or both of the down pipe connections?	Yes. Replace down pipe gaskets, clamps and retest for fuel trim faults.
		No. Refer to PSI Engine Manual and follow fault code based diagnostics.  The latest version of the PSI Diagnostic manual can be found on the <a href="#">Master Service Information website</a> .





**Figure 1. Potential Leak Point**



**Figure 2. Missing Exhaust Clamp Support**

## **REPAIR STEP(s)**

All repair information can be found in the PSI Engine Service Manual on the [Master Service Information website](#).

## **WARRANTY INFORMATION**

<b>Group:</b>	12000 - Engines
<b>Noun:</b>	553 - Clamp, V-Band

### **Standard Repair Time(s):**

Description	Chassis	Engine	SRT	Hours
Navistar Leak Locator Test	2CE Bus	PSI 8.8L Propane Engine	T-time	1 Hrs

<b>Exhaust Gasket Replace (includes both banks)</b>	<b>2CE Bus</b>	<b>PSI 8.8L Propane Engine</b>	<b>T-time</b>	<b>.6 Hrs</b>
<b>Missing Clamp Installation</b>	<b>2CE Bus</b>	<b>PSI 8.8L Propane Engine</b>	<b>T-time</b>	<b>.3 Hrs</b>

**Standard Repair Time(s):**

Refer to the [SRT Manual](#) for Repair Times

**OTHER RESOURCES**

[Master Service Information Site](#)

 Hide Details

Feedback Information

Viewed: 114  
 Helpful: 3  
 Not Helpful: 0

No Feedback Found