



**Countries:** BAHAMAS, BOLIVIA, BELIZE, CANADA, CHILE, TAIWAN, COLOMBIA, COSTA RICA, DOMINICAN REPUBLIC, ECUADOR, EL SALVADOR, TRINIDAD AND TOBAGO, UNITED STATES, URUGUAY, VENEZUELA, ARUBA, NICARAGUA, PERU, Curaçao, GUAM, GUATEMALA, GUYANA, HAITI, HONDURAS, JAMAICA, KOREA, SOUTH KOREA, PANAMA  
**Document ID:** IK0800476  
**Availability:** ISIS, FleetISIS, IsSIR  
**Revision:** 4  
**Major System:** ELECTRICAL SYSTEM  
**Created:** 1/30/2014  
**Current Language:** English  
**Last Modified:** 12/6/2017  
**Other Languages:** NONE  
**Author:** Frank Amstadt  
**Viewed:** 1032

[Less Info](#)

Hide Details

Coding Information

Copy Link 	Copy Relative Link 	Bookmark  <a href="#">View My Bookmarks</a>	Add to Favorites 	Print 	Provide Feedback 	Helpful  7	Not Helpful  2
---------------	------------------------	---	----------------------	-----------	----------------------	------------------	----------------------

**Title: Cracked Windshields on Units Equipped With Heated Windshield Feature 595AMP**

**Applies To: All Units With Heated Windshield Feature 595AMP**

## Change Log

Please refer to the change log text box below for recent changes to this article:

12/06/2017 - Added change log. Included new section for operation of vehicles built after 11/09/2015 to clarify how the system works.

## Description

Units equipped with heated windshield features, and built prior to 11/09/2015 may experience cracks along the heater grids.

### NOTE:

**Vehicles built after 11/09/2015 will NOT qualify to have this procedure performed.**

- Vehicles built after 11/09/2015 use separate features for the mirror heater and windshield heater
  - 0595AMP is used for Heated Windshield on its own circuitry, using relays
  - 0595BUX is used for Heated Mirrors on its own circuitry, and is a direct digital output
- Detailed information on vehicles built after 11/09/2015 is available at the bottom of the article. [Click Here](#) to jump to the bottom of the article.

## Symptoms

**Diagnostic Trouble Codes & Dashboard Indicator Lights:**

DTC/Light	Description
No Faults or Warning Lights	

**Customer Observations or Concerns:**

- Cracked Windshield
- Windshield Heater Inop

**Special Tools / Software**

Tool Description	Tool Number	Comments	Instructions
International® Diamond Logic® Builder (DLB)		EZ-Tech® Software	

**Service Parts Information**

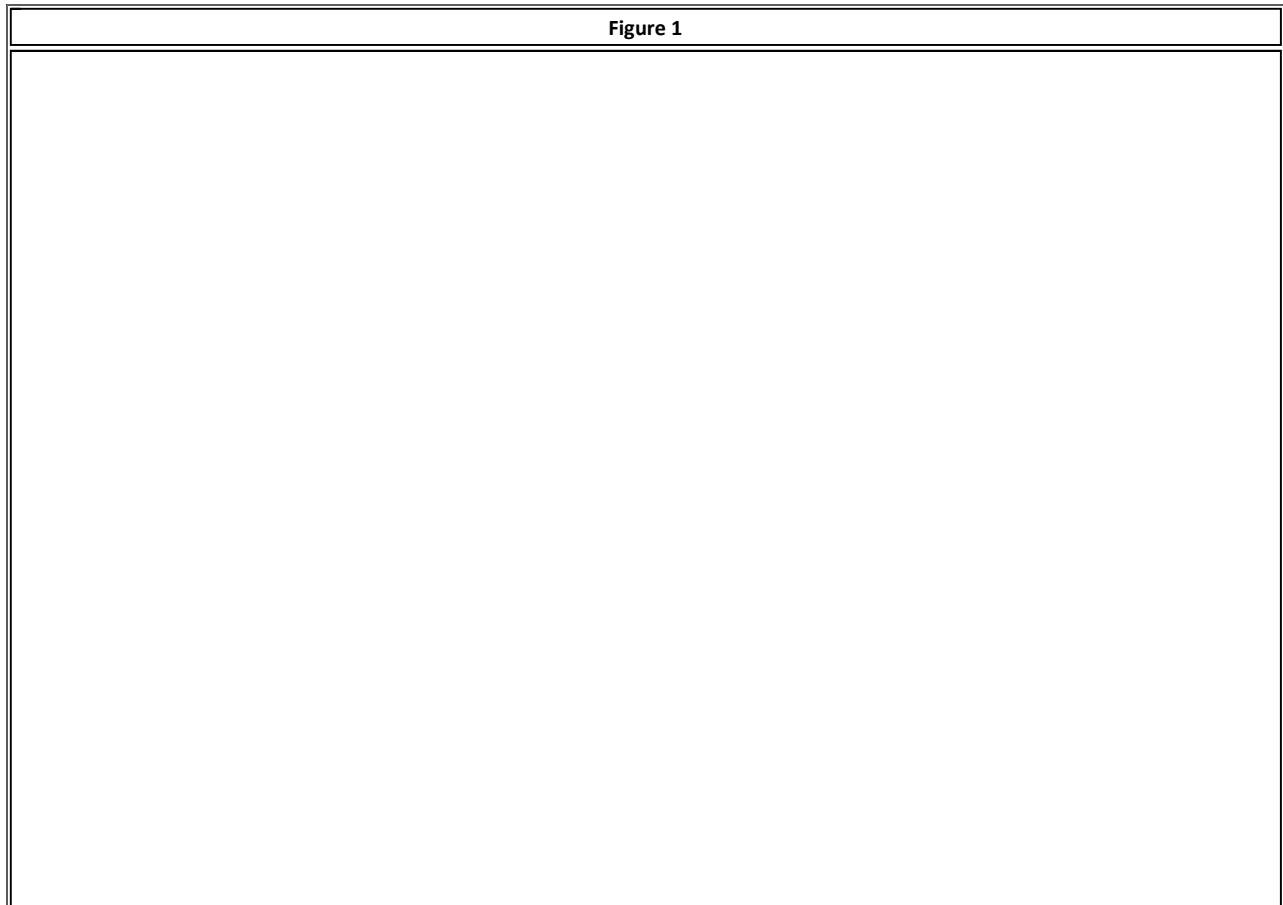
Kit Description	Part Number	Quantity Required	Notes
Not Applicable			

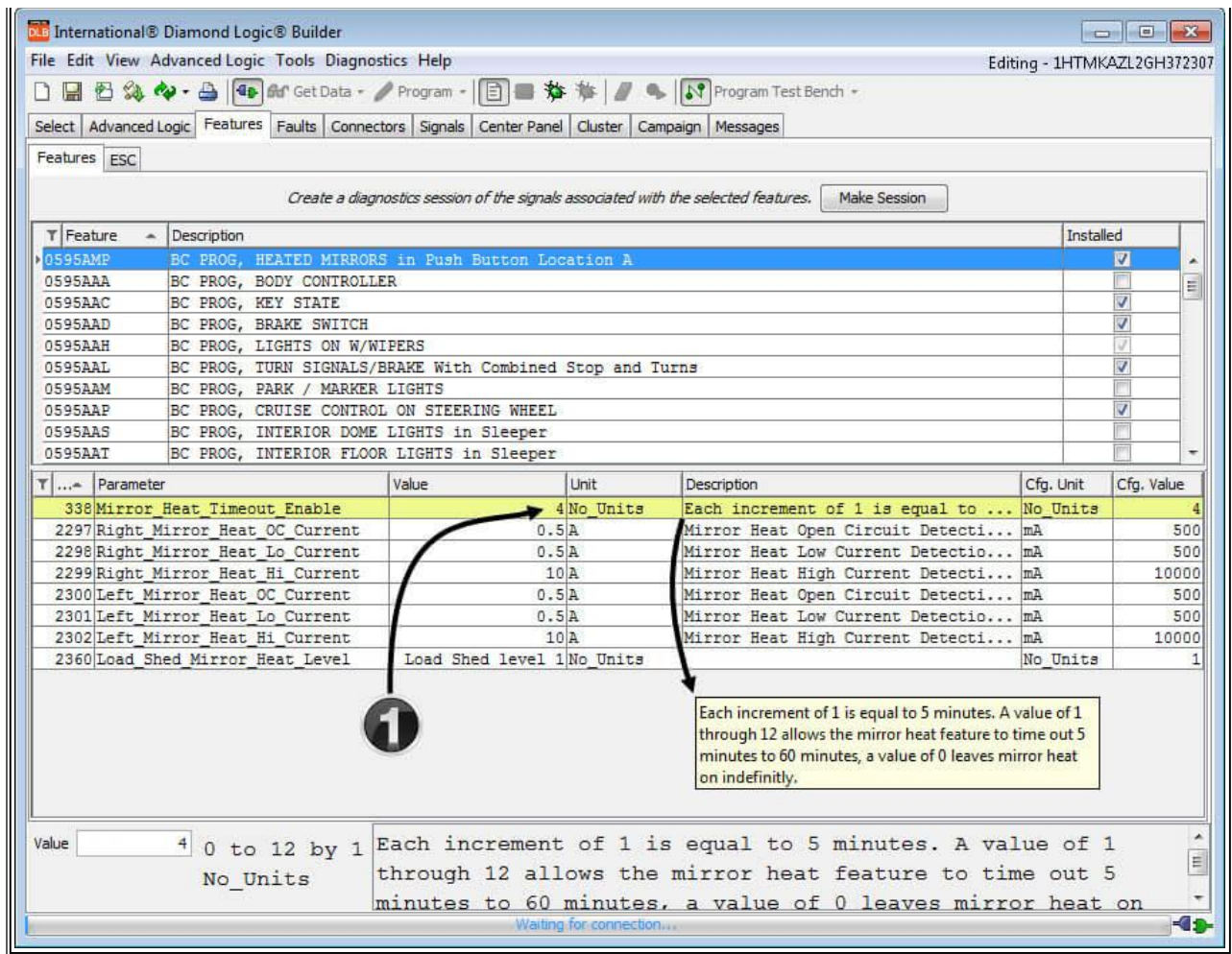
**Diagnostic Steps**

1. Check windshield for cracks along the heater grids
2. Verify heater operation with DLB, making a session from feature 0595AMP
  - [IK2600008](#) - How to Diagnose Electrical Problems with Diamond Logic® Builder

**Repair Step(s)**

1. Replace windshield if needed
2. Program the heated windshield timer in DLB as follows:
  - The heated windshield runs off the heated mirror circuit
  - Set Parameter 338 (Mirror\_Heat\_Timeout\_Enable) to a value of "4", which equals 20 minutes
3. Program the Parameter change to the BCM





## Warranty Information

### Warranty Claim Coding:

Refer to the [Warranty Coding Manual](#) for Group and Noun Codes.

### Standard Repair Time(s):

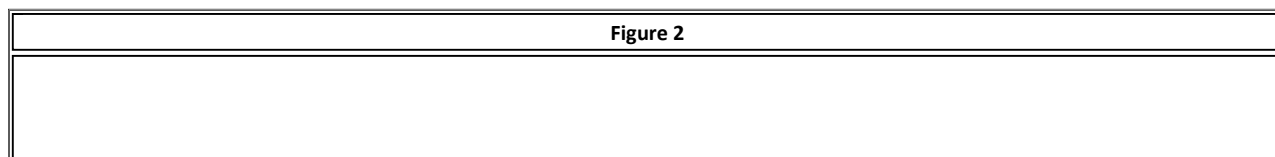
Refer to the [SRT Manual](#) for Repair Times

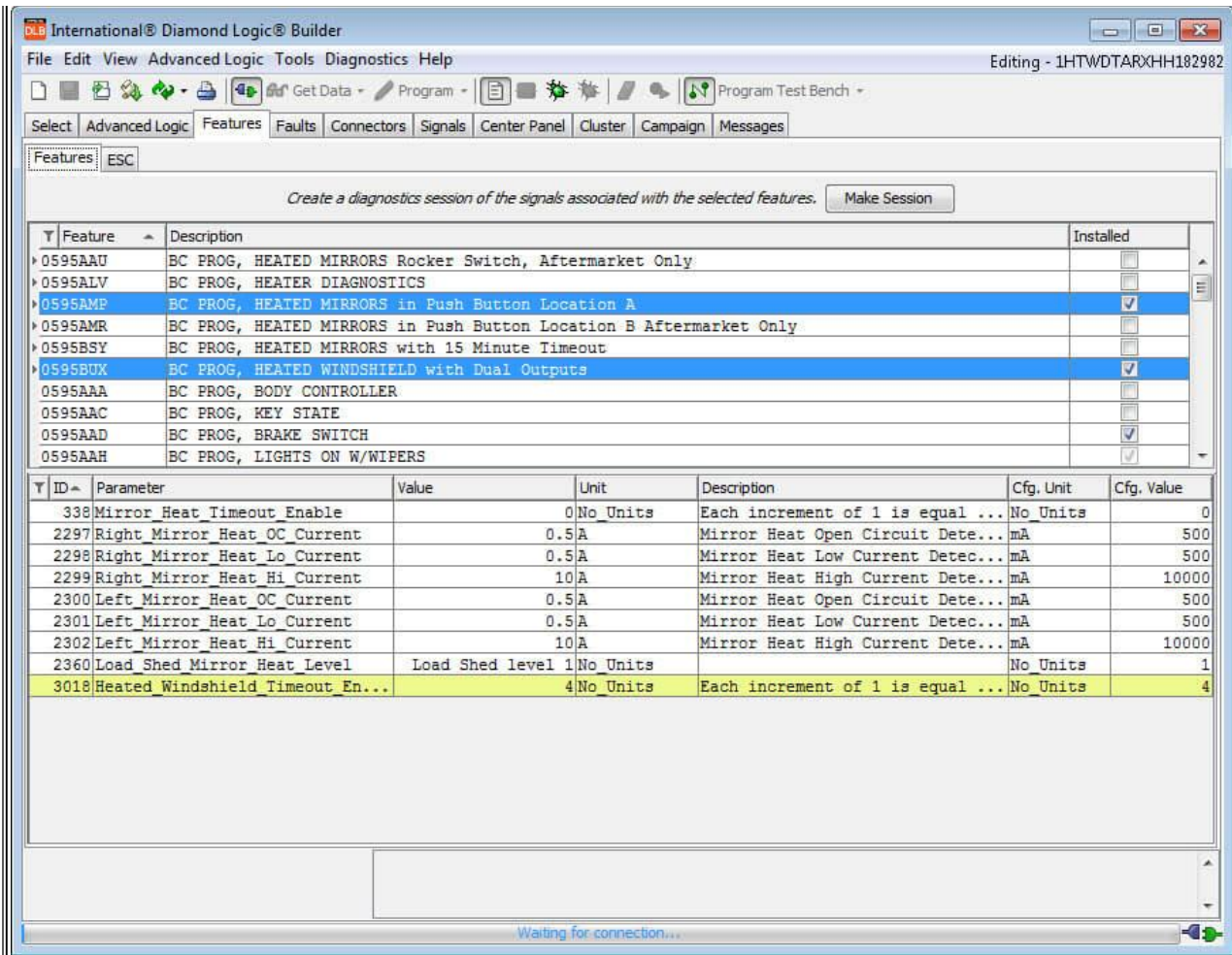
## Other Resources

[Master Service Information Site](#)

## Information for Vehicles Built After 11/09/2015

Vehicles build after 11/09/2015 do not qualify for this repair, as the mirror and windshield heaters are now separate outputs from the BCM





- Features 595AMP and 595BUX were both selected using the control button on the keyboard
  - Parameter 338 remains the Heated Mirrors Timeout Value
  - Parameter 3018 is new for the Heated Windshield Timeout Value and the default value is 4 (20 Mins)

Figure 3

Signal	Pins	Unit	Signal Type	Description
Heated Windshield Right Cmd	1601-F12	On/Off	Relay Driver Output	Right Relay Driver Signal for Heated Windshield
Heated Windshield Left Cmd	1601-F16	On/Off	Relay Driver Output	Left Relay Driver Signal for Heated Windshield
Left Mirror Heat Cmd	1603-H	On/Off	Digital Output	
Right Mirror Heat Cmd	1603-L	On/Off	Digital Output	
Mirror Heat On Switch	C-1	On/Off	J1939 Input	
Ignition		On/Off	J1939 Output	
Mirror Heat		On/Off		
Mirror Heat Loop Count		No Units		This variable sets the number of loop times to run...
Right Mirror Heat FET Status		On/Off		
Left Mirror Heat Current Signal		A		
Left Mirror Heat Raw Signal		V	Analog Input	
Right Mirror Heat Current Signal		A		
Mirror Heat Switch Ind Cmd		On/Off	J1939 Output	
Right Mirror Heat Raw Signal		V	Analog Input	
Left Mirror Heat FET Status		On/Off		
Heated Windshield Switch Ind Cmd		No Units	J1708 Output	Switch Indicator for Heated Windshield
Heated Windshield Flash Timer		s		This is used to count duration at which the Heated...
Heated Windshield Switch On		On/Off	J1708 Input	Switch to energize the Heated Windshield On position
Heated Windshield Debounce Timer		s		Heated Windshield Debounce timer for Key switch tr...
Engine Running		On/Off		
Key State		No Units		0 = Off, 1=Crank, 2=Acc, 3=Run OR 0=Off, 1=Ign on...
Heated Windshield Switch Off		On/Off		Heated Windshield Switch Off Signal
Heated Windshield Timer		s		Heated Windshield Relay Timer

- A session was made which includes BOTH feature codes
  - Heated Windshield outputs are shown in YELLOW
  - Heated Mirror outputs are shown in BLUE

( [Back to Top](#) )

Hide Details
Feedback Information

Viewed: 1031

Helpful: 7

Not Helpful: 2

No Feedback Found