

Service Update

16179 Missing Welds at Front Right Side Lower Wheelhouse



Reference Number: N162076610

Release Date: January 2017

Revision: 00

Attention: This service update includes vehicles in dealer inventory and customer vehicles that return to the dealership for any reason. This bulletin will expire at the end of the involved vehicle's New Vehicle Limited Warranty period.

Make	Model	Model Year		RPO	Description
		From	To		
Chevrolet	Trax	2017	2017		

Involved vehicles are marked "open" on the Investigate Vehicle History screen in GM Global Warranty Management system. This site should always be checked to confirm vehicle involvement prior to beginning any required inspections and/or repairs.

Condition	Certain 2017 model year Chevrolet Trax vehicles were built with 2 missing welds at the front, right side, lower area of the wheelhouse. There may be a potential for squeaks and rattles to develop.
Correction	Inspect for missing spot welds and install rivets if necessary.

Parts

Quantity	Part Name	Part No.
2	Rivet	11561334
As Req'd	Sealant, RTV Silicone	88864346 (US) 88861418 (Canada)

Note: Parts on this bulletin may be sold in package quantities. Part 11561334 is sold in a package quantity of 5 and parts 88864346 & 88861418 are in a package quantity of 6.

Reminder: Parts may be removed from Retail Inventory Management (RIM). Dealers should review the affected parts to confirm RIM managed status.

Warranty Information

Labor Operation	Description	Labor Time	Trans. Type	Net Item
9102862	Inspect for Missing Spot Welds	0.3	ZFAT	N/A
	ADD: Install Rivets, Includes Corrosion Protection Steps	0.4		*

* The amount identified in "Net Item" should represent the actual sum total of the current GMCCA Dealer net price for catalyzed primer and RTV sealer needed to perform the required repairs, not to exceed \$9.00 USD, not to exceed \$13.00 CAD.

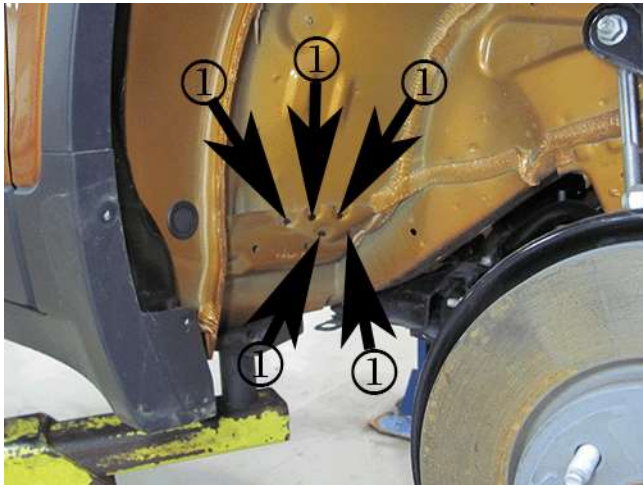
Service Procedure

NOTE: The spot welds are painted black in the following photos for identification purposes. The spot welds on the vehicle are body colored.

1. Remove the right front wheelhouse liner. Refer to *Front Wheelhouse Liner Replacement (Chevrolet)* in SI.

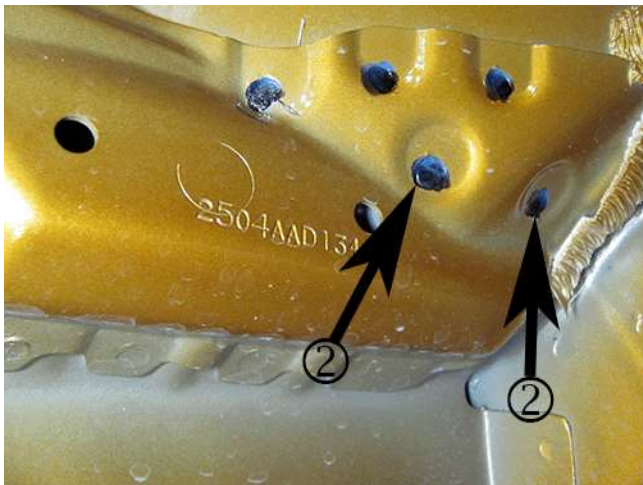
Service Update

16179 Missing Welds at Front Right Side Lower Wheelhouse



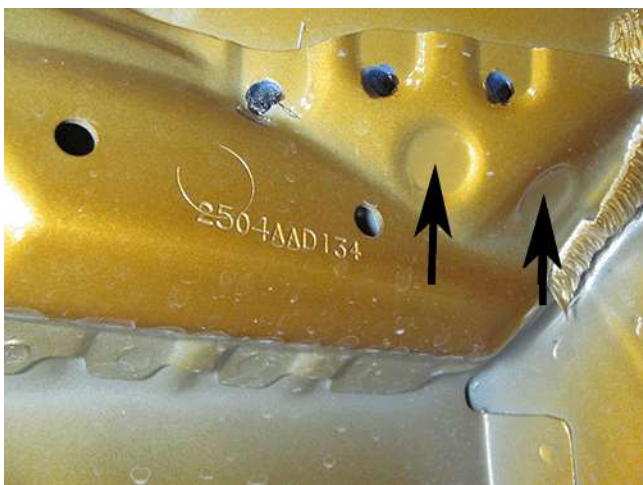
4666515

2. Locate the reinforcement in the rear of the wheelhouse area. There are five spot welds connecting the reinforcement to the front of dash panel (1).



4666517

3. Inspect the brace and verify that the two lower spot welds are present (2).
 - If the **2 lower spot welds are present, no further action is required**. Reinstall the wheelhouse liner. Refer to Front Wheelhouse Liner Replacement (Chevrolet) in SI.
 - If the **2 lower spot welds are not present, proceed to step # 4**.



4666518

Service Update

16179 Missing Welds at Front Right Side Lower Wheelhouse



4. Mark two drill locations as shown. Center the drill locations in the depression stamped into the brace.

NOTE: A drill stop is strongly recommended.

5. Place a drill stop or masking tape at a depth of 10mm on to a 6.8mm drill bit.
6. Drill two 6.8 mm holes. Use care to not drill into the floor insulator inside the vehicle.



3971941

7. * Prepare a small portion of catalyzed primer in a mixing cup.



3971946

8. Dip the tip of the rivets into the primer.
9. Using an appropriate rivet gun, install the two rivets.
10. Clean any primer squeeze out from the repair area.
11. Apply RTV sealer P/N 88864346/88861418 (or equivalent), on and around each of the rivet heads after installation.
12. Reinstall the right front wheelhouse liner. Refer to *Front Wheelhouse Liner Replacement (Chevrolet)* in SI.

* Refer to the 2016 GM Approved Refinish Materials booklet (GMW-15406) for specific products. To access the booklet, go to www.genuinegmparts.com. Click on Collision Repair. From this page, Click on Paint Shop. Select 2014 GM

Service Update

16179 Missing Welds at Front Right Side Lower Wheelhouse



Approved Refinish Materials. In Canada, the GM Approved Refinish Materials Booklet is also available in GM GlobalConnect by choosing LIBRARY, SERVICE and then PAINT SHOP.

Dealer Responsibility

Whenever a vehicle subject to this service update enters your vehicle inventory, or is in your facility for service in the future, and the vehicle is still covered under the New Vehicle Limited Warranty, you must take the steps necessary to be sure the service update correction has been made before selling or releasing the vehicle.

All new, used, GM Certified Used, courtesy transportation vehicles, dealer shuttle vehicles, etc. in dealers' possession and subject to this bulletin must be held and inspected/repaired per the service procedure of this bulletin before customers take possession of these vehicles. Involved vehicles must be held and not delivered to customers, dealer-traded, released to auction, used for demonstration, or any other purpose.

All GM Certified Used vehicles currently in the dealers' inventory within the Certified Pre-Owned Inventory System (CPOIS) will be de-certified and must be held and remedied per the service procedure in this bulletin. Upon submitting an accepted/paid warranty transaction in the Global Warranty Management (GWM) system, the vehicle can be re-certified for sale within the CPOIS system, or once again be used in the CTP program.

GM bulletins are intended for use by professional technicians, NOT a "do-it-yourselfer". They are written to inform these technicians of conditions that may occur on some vehicles, or to provide information that could assist in the proper service of a vehicle. Properly trained technicians have the tools, equipment, safety instructions, and know-how to do a job properly and safely. If a condition is described, **DO NOT** assume that the bulletin applies to your vehicle, or that your vehicle will have that condition. See your dealer for information on whether your vehicle may benefit from the information.



**We Support
Voluntary Technician
Certification**

GLOBAL SAFETY FIELD INVESTIGATIONS
DCS4311
URGENT - DISTRIBUTE IMMEDIATELY

Date: January 13, 2017

Subject: 16179 - Service Update
Missing Welds at Front Right Side Lower Wheelhouse

Models: 2017 Chevrolet Trax

To: All General Motors Dealers

General Motors is releasing Service Update 16179 today. The total number of U.S. vehicles involved is 155. Please see the attached bulletin for details.

Global Warranty Management (GWM)

The Investigate Vehicle History (IVH) screen in the GWM system will be updated January 14, 2016. A list of involved vehicles in dealer new inventory is attached to this message. Please hold all warranty transactions until the VIN appears in IVH.

END OF MESSAGE
GLOBAL SAFETY FIELD INVESTIGATIONS