

October 18, 2017

07563 Version 4

Product Update: TLX 9-Speed Transmission Warmer

Supersedes 17-011, dated October 6, 2017, to revise the information highlighted in **yellow**

AFFECTED VEHICLES

Year	Model	Trim	VIN Range
2015-16	TLX	All with 9-speed A/T	Check the iN VIN status for eligibility

REVISION SUMMARY

Under REQUIRED MATERIALS, order the Honda ATF P/N to complete this campaign.

BACKGROUND

Some 9-speed transmission warmers were improperly manufactured and allow the engine coolant and ATF to mix. If the fluids mix, the engine and transmission may be permanently damaged and require replacement.

CLIENT NOTIFICATION

Owners of affected vehicles will be sent a notification of this campaign.

Do an iN VIN status inquiry to make sure the vehicle is shown as eligible.

Some vehicles affected by this campaign may be in your new or used vehicle inventory. Repair these vehicles before they are sold.

SERVICE ADVISOR

Ask the client if the vehicle overheated, for example, if the MID showed a message **Stop Driving Engine Temperature Too Hot** or there was steam from under the hood. Other signs include coolant leaking from the radiator cap or the coolant reserve tank.



OR



Write down the client responses on the RO.

NOTE: Any engine replaced without this documentation on the signed RO will be subject to debit.

CLIENT INFORMATION: The information in this bulletin is intended for use only by skilled technicians who have the proper tools, equipment, and training to correctly and safely maintain your vehicle. These procedures should not be attempted by "do-it-yourselfers," and you should not assume this bulletin applies to your vehicle, or that your vehicle has the condition described. To determine whether this information applies, contact an authorized Acura automobile dealer.

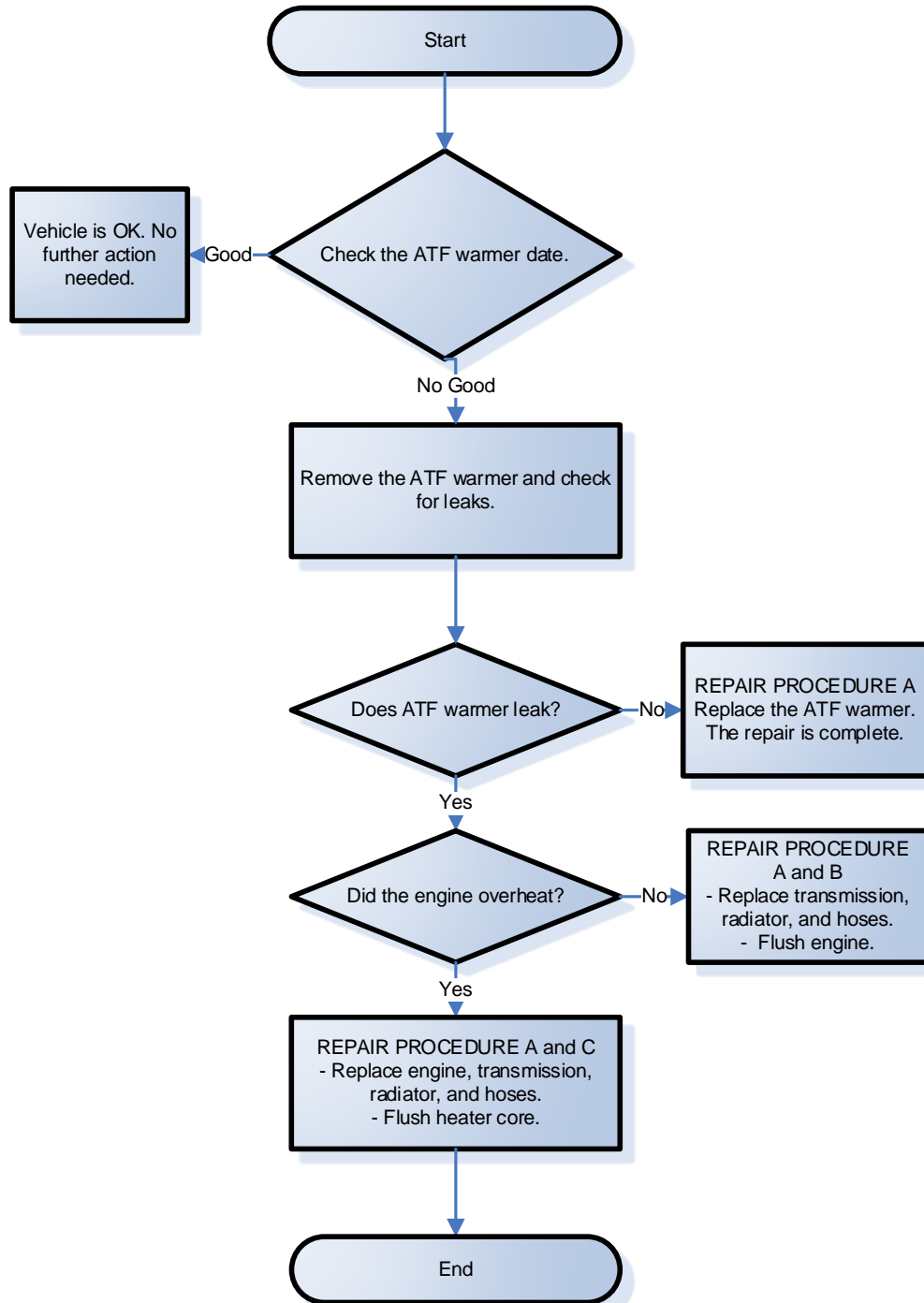
CORRECTIVE ACTION

Inspect the vehicle and based on your inspection, do one of the following:

- The transmission warmer is outside the affected date. No further action is needed.
- Replace the transmission warmer.
- Replace the transmission, radiator, thermostat, coolant reserve tank, all of the coolant hoses, ECT sensor (1 and 2) O-rings (engine coolant temperature sensor), and flush the cooling system.
- Replace the short block, cylinder heads, transmission, radiator, thermostat, coolant reserve tank, all of the coolant hoses, ECT sensor (1 and 2) O-rings (engine coolant temperature sensor), water passage, water connecting pipe, and flush the heater core.

NOTE: Photos are required every time a transmission is replaced – see page 17. Any transmission replacement claims that do not include the required photos may be subject to debit.

The flowchart below provides a summary to help navigate the inspection and repair procedure. Make sure you read the service bulletin steps thoroughly for the detailed repair information.



WARRANTY CLAIM INFORMATION

Inspection Only (You cannot combine this LON with any others)

Operation Number	Description	Flat Rate Time	Defect Code	Symptom Code	Template ID	Failed Part Number
2185B4	Inspect the transmission warmer manufacturing date. Use this information when the ATF warmer date is outside affected range and no further action is needed.	0.2 hr	6ZF00	KG200	B17011A	06200-5J4-A71

Inspection and do REPAIR PROCEDURE A Only

Operation Number	Description	Flat Rate Time	Defect Code	Symptom Code	Template ID	Failed Part Number
2180B2	Inspect the vehicle and do REPAIR PROCEDURE A only. Replace: ATF Warmer	2.1 hrs	6ZF00	KG200	B17011B	06200-5J4-A71

Inspection and do REPAIR PROCEDURE A and REPAIR PROCEDURE B

NOTE: Photos must be submitted with any warranty claim where the transmission is replaced – see page XX. Any transmission replacement claims that do not include the required photos may be subject to debit.

Operation Number	Description	Transmission Replacement Number	Flat Rate Time	Defect Code	Symptom Code	Template ID	Failed Part Number
2180B3	<p>2WD BASE/TECH - Inspect the vehicle and start at REPAIR PROCEDURE A and also do REPAIR PROCEDURE B.</p> <ul style="list-style-type: none"> - Replace: transmission, radiator, and hoses - Flush engine - Includes photos, updating PCM/TCM, idle learn and alignment 	06200-5J4-A71RM	10.5 hrs	6ZF00	KG200	B17011C	06200-5J4-A71
2180B3	<p>2WD ADV - Inspect the vehicle and start at REPAIR PROCEDURE A and also do REPAIR PROCEDURE B.</p> <ul style="list-style-type: none"> - Replace: transmission, radiator, and hoses - Flush engine - Includes photos, updating PCM/TCM, idle learn and alignment 	06200-5J4-A81RM	10.5 hrs	6ZF00	KG200	B17011D	06200-5J4-A71
2180B4	<p>AWD BASE/TECH - Inspect the vehicle and start at REPAIR PROCEDURE A and also do REPAIR PROCEDURE B.</p> <ul style="list-style-type: none"> - Replace: transmission, radiator, and hoses - Flush engine - Includes photos, updating PCM/TCM, idle learn and alignment 	06200-5L9-A72RM	10.9 hrs	6ZF00	KG200	B17011E	06200-5J4-A71
2180B4	<p>AWD ADV - Inspect the vehicle and start at REPAIR PROCEDURE A and also do REPAIR PROCEDURE B.</p> <ul style="list-style-type: none"> - Replace: transmission, radiator, and hoses - Flush engine - Includes photos, updating PCM/TCM, idle learn and alignment 	06200-5L9-A81RM	10.9 hrs	6ZF00	KG200	B17011F	06200-5J4-A71

Inspection and do REPAIR PROCEDURE A and REPAIR PROCEDURE C

NOTE: Photos must be submitted with any warranty claim where the transmission is replaced – see page 17. Any transmission replacement claims that do not include the required photos may be subject to debit.

Operation Number	Description	Transmission Replacement Number	Flat Rate Time	Defect Code	Symptom Code	Template ID	Failed Part Number
2180B5	<p>2WD BASE/TECH - Inspect the vehicle and start at REPAIR PROCEDURE A and do REPAIR PROCEDURE C.</p> <ul style="list-style-type: none"> - Replace: engine, transmission, radiator, and hoses - Flush heater core - Includes photos, updating PCM/TCM, idle learn and alignment 	06200-5J4-A71RM	12.7 hrs	6ZF00	KG200	B17011G	06200-5J4-A71
2180B5	<p>2WD ADV - Inspect the vehicle and start at REPAIR PROCEDURE A and do REPAIR PROCEDURE C.</p> <ul style="list-style-type: none"> - Replace: engine, transmission, radiator, and hoses - Flush heater core - Includes photos, updating PCM/TCM, idle learn and alignment 	06200-5J4-A81RM	12.7 hrs	6ZF00	KG200	B17011H	06200-5J4-A71

Inspection and do REPAIR PROCEDURE A and REPAIR PROCEDURE C

2180B6	AWD BASE/TECH - Inspect the vehicle and start at REPAIR PROCEDURE A and do REPAIR PROCEDURE C - Replace: engine, transmission, radiator, and hoses - Flush heater core - Includes photos, updating PCM/TCM, idle learn and alignment	06200-5L9-A72RM	13.1 hrs	6ZF00	KG200	B17011J	06200-5J4-A71
2180B6	AWD ADV - Inspect the vehicle and start at REPAIR PROCEDURE A and do REPAIR PROCEDURE C - Replace: engine, transmission, radiator, and hoses - Flush heater core - Includes photos, updating PCM/TCM, idle learn and alignment	06200-5L9-A81RM	13.1 hrs	6ZF00	KG200	B17011K	06200-5J4-A71

PARTS INFORMATION - REPAIR PROCEDURE A

Part Name	Part Number	Quantity
ATF Warmer Kit (Includes O-Rings)	06224-5J4-305	1

REQUIRED MATERIALS – REPAIR PROCEDURE A

Part Name	Part Number	Quantity
ATF Type 3.1 NOTE: 1 quart will fill 5 vehicles.	08200-9017	1
Coolant Type 2 NOTE: 1 gallon will fill 10 vehicles.	OL999-9011A	1

NOTE: Order the Honda ATF for this campaign.

PARTS INFORMATION – REPAIR PROCEDURE B

Part Name	Part Number	Quantity
Transmission		1
2WD Base and Tech	06200-5J4-A71RM	
2WD Advanced	06200-5J4-A81RM	
AWD Base and Tech	06200-5L9-A72RM	
AWD Advanced	06200-5L9-A81RM	
Flange Bolt (12 x 70 mm)	90051-R97-000	1
Flange Bolt (12 x 120 mm)	90051-5J4-000	1
Flange Nut (12 mm)	90371-SEF-000	4
Flange Bolt (10 x 35 mm)	90163-SDA-A01	1
Flange Bolt (10x 45 mm)	90163-TZ3-A00	1
Flange Bolt (10 x 30 mm)	90161-T2F-A01	3
Flange Bolt (12 x 45 mm)	90165-SDA-A00	2
Flange Bolt (12 x 45 mm)	90164-T2G-A01	1
Pre-Chamber Gasket	18393-SDB-A00	2
Exhaust Pipe Gasket (NOK)	18212-SA7-003	2
Self-Lock Nut (10 mm)	90212-SA5-003	9
Bolt (12 point 8 x 21 mm)	90113-S10-000	8
Washer Bolt (10 x 30 mm)	90382-SZA-003	2
Split Pin (3.0 x 22 mm)	94201-30220	2
Castle Nut (14 mm)	90363-S3V-A01	2
Flange Bolt (10 x 45 mm)	90163-SZ3-000	3
Flange Bolt (14 x 135 mm)	90176-SDA-A00	2
Flange Bolt (10 x 77 mm)	90167-TZ7-A01	2
Flange Bolt (10 x 24 mm)	90166-TZ7-A01	2
Flange Bolt (14 x 150 mm)	90177-SDA-A00	2
Flange Bolt (8 x 16 mm)	90101-SWA-A00	2
Flange Bolt (12 x 33 mm)	90186-SDA-A00	2
Flange Bolt (10 x 34 mm)	90162-T2A-A00	4
Snap Ring (32 x 2.2 mm)	44319-STX-A01	1
Set Ring (32 x 2.2 mm)	44319-STX-A60	1
Flange Bolt (10 x 30 mm)	90163-SDB-A00	3
Radiator (DENSO)	19010-5J2-A01	1
Reserve Tank	19101-5J2-A00	1
Reserve Tank Cap	19102-5J6-A00	1
Reserve Tank Joint	19106-RSA-G00	1
Reserve Tank Tube A	19103-5J2-A00	1
Reserve Tank Tube B	19104-5J2-A00	1
Water Hose (Lower) (A)	19502-5J2-A50	1

Water Hose (Lower) (B)	19504-5J2-A50	1
Water Hose (Upper)	19501-5J2-A00	1
Water Inlet Hose	79721-TZ3-A00	1
Water Outlet Hose Assembly	79725-TZ3-A00	1
Warmer Hose B (ATF)	19433-5J2-A00	1
Water Hose B	19522-R9P-A00	1
Water Hose C	19523-5J2-A00	1
Water Hose A	19521-5J2-A00	1
Warmer Hose A (ATF)	19432-5J2-A50	1
O-Ring (DENSO)	91307-RTA-005	2
Thermostat Cover Assembly	19315-5J2-A01	1
Spindle Nut	90305-S3V-A11	2

REQUIRED MATERIALS – REPAIR PROCEDURE B

Part Name	Part Number	Quantity
Coolant Type 2	OL999-9011A	16

PARTS INFORMATION – REPAIR PROCEDURE C

Part Name	Part Number	Quantity
Transmission		1
2WD Base and Tech	06200-5J4-A71RM	
2WD Advanced	06200-5J4-A81RM	
AWD Base and Tech	06200-5L9-A72RM	
AWD Advanced	06200-5L9-A81RM	
Cylinder Block Assembly	10002-5J2-A00	1
Cylinder Head Assembly (Front)	10004-R9P-A01	1
Cylinder Head Assembly (Rear)	10005-5J6-A00	1
Exhaust Pipe Gasket (NOK)	18212-SA7-003	2
Pre-Chamber Gasket	18393-SDB-A00	1
Self-Lock Nut (10 mm)	90212-SA5-003	9
Bolt (12 point 8 x 21 mm) (AWD Only)	90113-S10-000	8
Washer Bolt (10 x 30 mm) (AWD Only)	90382-SZA-003	2
Split Pin (3.0 x 22 mm)	94201-30220	2
Castle Nut (14 mm)	90363-S3V-A01	2
Spindle Nut (24 mm)	90305-SD4-003	2
Flange Nut (12 mm)	90371-SEF-000	4
Flange Bolt (10 x 35 mm)	90163-SDA-A01	1
Flange Bolt (10 x 45 mm)	90163-TZ3-A00	1
Flange Bolt (10 x 60 mm)	90168-TA1-A00	2
Flange Bolt (12 x 45 mm)	90165-SDA-A00	2
Flange Bolt (12x 45 mm)	90164-T2G-A01	1
Flange Bolt (10 x 30 mm)	90163-SDB-A00	3
Flange Bolt (12 x 56 mm)	90170-TZ3-A00	4
Flange Bolt (10 x 50 mm)	95701-10050-08	4
Intake Manifold Cover Gasket (Upper)	17112-5G0-A01	1
Intake Manifold Gasket (Nippon Leakless)	17105-R9P-A01	1
Throttle Body Gasket	16176-RYE-A10	1
Fuel Joint Pipe Set (MSDS includes VOC)	16012-R9P-305	1
Front Intake Manifold Base Gasket	17055-R9P-A01	1
Rear Intake Manifold Base Gasket	17065-R9P-A01	1
Injector Seal Set	16453-R9P-A00	1
O-Ring	91311-5A2-A01	1

Exhaust Chamber Gasket (NIPPON LEAKLESS)	18115-5G0-A01	2
EGR Pipe Gasket A	18716-R70-A01	1
EGR Pipe Gasket B	18719-R70-A01	1
Rear Cylinder Head Gasket (NIPPON LEAKLESS)	12261-R9P-A01	1
Front Cylinder Head Gasket (NIPPON LEAKLESS)	12251-R9P-A01	1
Timing Belt Idler Bolt	14551-RCA-A01	1
Front Water Passage Gasket (NIPPON LEAKLESS)	19411-5G0-A02	1
Rear Water Passage Gasket (NIPPON LEAKLESS)	19412-5G0-A01	1
O-Ring (Denso)	91307-RTA-005	2
Thermostat Cover Assembly	19315-5J2-A01	1
O-Ring (31.2 x 4.1 mm) (NOK)	91314-PH7-003	2
EGR Valve Gasket (ISHINO GASKET)	18715-PB2-000	1
Oil Filter	15400-PLM-A02	1
Radiator (DENSO)	19010-5J2-A01	1
Reserve Tank	19101-5J2-A00	1
Reserve Tank Cap	19102-5J6-A00	1
Reserve Tank Joint	19106-RSA-G00	1
Reserve Tank Tube A	19103-5J2-A00	1
Reserve Tank Tube B	19104-5J2-A00	1
Water Hose (Lower) (A)	19502-5J2-A50	1
Water Hose (Lower) (B)	19504-5J2-A50	1
Water Hose (Upper)	19501-5J2-A00	1
Water Inlet Hose	79721-TZ3-A00	1
Water Outlet Hose Assembly	79725-TZ3-A00	1
Warmer Hose B (ATF)	19433-5J2-A00	1
Water Hose B	19522-R9P-A00	1
Water Hose C	19523-5J2-A00	1
Water Hose A	19521-5J2-A00	1
Warmer Hose A (ATF)	19432-5J2-A50	1
Connecting Pipe	19505-5J2-A00	1
Water Passage	19410-5J2-A00	1
Flange Bolt (12 x 70 mm)	90051-R97-000	1
Flange Bolt (12 x 120 mm)	90051-5J4-000	1
Flange Bolt (10 x 30 mm)	90161-T2F-A01	3
Flange Bolt (10 x 45 mm)	90163-SZ3-000	3

Flange Bolt (14 x 135 mm)	90176-SDA-A00	2
Flange Bolt (10 x 77 mm)	90167-TZ7-A01	2
Flange Bolt (10 x 24 mm)	90166-TZ7-A01	2
Flange Bolt (14 x 150 mm)	90177-SDA-A00	2
Bolt Washer (8 x 16 mm)	90101-SWA-A00	2
Flange Bolt (12 x 33 mm)	90186-SDA-A00	2
Flange Bolt (10 x 34 mm)	90162-T2A-A00	4
Snap Ring (32 x 2.2 mm)	44319-STX-A01	1
Set Ring (32 x 2.2 mm)	44319-STX-A60	1
Injector Clip	16451-5A2-A01	6
Spindle Nut	90305-S3V-A11	2

REQUIRED MATERIALS – REPAIR PROCEDURE C

Part Name	Part Number	Quantity
Coolant Type 2	OL999-9011A	3
Acura motor oil 0W-20	08798-9073	6