

October 18, 2017

07562 Version 4

Product Update: MDX 9-Speed Transmission Warmer (Transmission Previously Replaced for Transmission Warmer Leaking)

Supersedes 17-010, dated October 6, 2017, to revise the information highlighted in **yellow**

AFFECTED VEHICLES

Year	Model	Trim	VIN Range
2016	MDX	All	Check the iN VIN status for eligibility

REVISION SUMMARY

Under REQUIRED MATERIALS, order the Honda ATF P/N to complete this campaign.

BACKGROUND

Some 9-speed transmission warmers were improperly manufactured and allow the engine coolant and ATF to mix. If the fluids mix, the engine and transmission may be permanently damaged and require replacement. These vehicles previously had the transmission replaced because the transmission warmers leaked. In rare cases, these vehicles may have also overheated but because the issue was under investigation, a standard repair procedure hadn't been developed. Further action is needed before the vehicle is completely repaired.

Make sure you review this bulletin in its entirety before starting. There are multiple repairs available and the correct one for the vehicle you are working on is based on your inspection and client interview responses.

CLIENT NOTIFICATION

Owners of affected vehicles will be sent a notification of this campaign.

Do an iN VIN status inquiry to make sure the vehicle is shown as eligible.

Some vehicles affected by this campaign may be in your new or used vehicle inventory. Repair these vehicles before they are sold.

SERVICE ADVISOR

Ask the client if the vehicle overheated, for example, if the MID showed a message **Stop Driving Engine Temperature Too Hot** or there was steam from under the hood. Other signs include coolant leaking from the radiator cap or the coolant reserve tank.



OR



The vehicles in this campaign had the transmission previously replaced. The vehicle may have overheated due to the warmer leaking on the previous repair; ask the client if the vehicle overheated before the transmission was replaced. This will help your technician decide what repair needs to be done.

Write down the client responses on the RO.

NOTE: Any engine replaced without this documentation on the signed RO will be subject to debit.

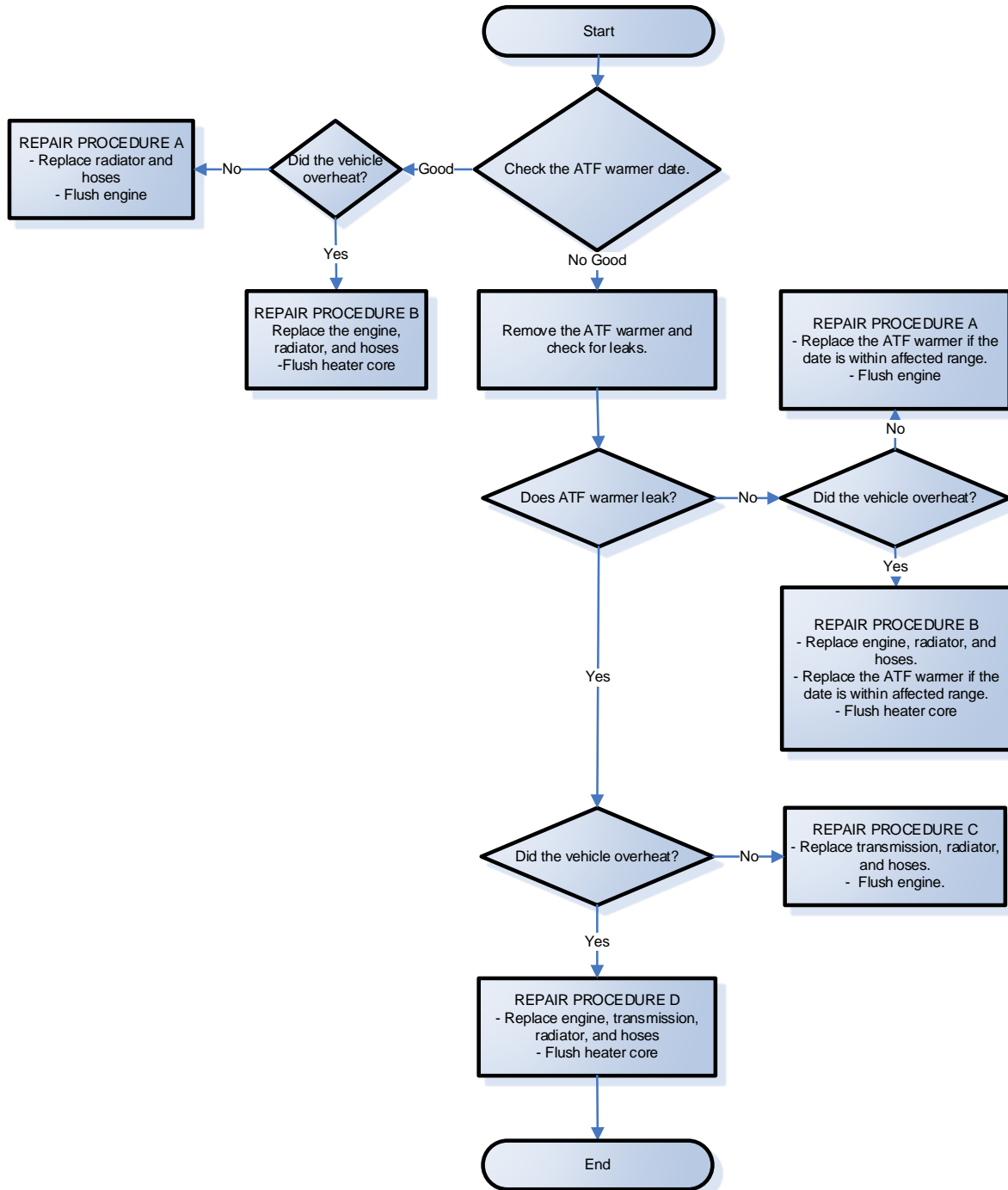
CLIENT INFORMATION: The information in this bulletin is intended for use only by skilled technicians who have the proper tools, equipment, and training to correctly and safely maintain your vehicle. These procedures should not be attempted by "do-it-yourselfers," and you should not assume this bulletin applies to your vehicle, or that your vehicle has the condition described. To determine whether this information applies, contact an authorized Acura automobile dealer.

CORRECTIVE ACTION

Inspect the warmer, and based on your inspection and interview with the client, do one of the following:

- Replace the transmission warmer, replace the radiator, coolant hoses, thermostat, coolant reserve tank, 2 ECT sensor (1 and 2) O-rings, and flush the cooling system.
- Replace the transmission, radiator, coolant hoses, thermostat, coolant reserve tank, 2 ECT sensor (1 and 2) O-rings, and flush the cooling system.
- Replace the short block, cylinder heads, radiator, thermostat, coolant reserve tank, all of the coolant hoses, 2 ECT sensor (1 and 2) O-rings, water passage, water connecting pipe, and flush the heater core.
- Replace the radiator, coolant hoses, thermostat, coolant reserve tank, 2 ECT sensor (1 and 2) O-rings, and flush the cooling system.
- Replace the short block, cylinder heads, transmission, radiator, thermostat, coolant reserve tank, all of the coolant hoses, 2 ECT sensor (1 and 2) O-rings, water passage, water connecting pipe, and flush the heater core.

The flowchart below provides a summary to help navigate the inspection and repair procedure. Make sure you read the service bulletin steps thoroughly for the detailed repair information.



WARRANTY CLAIM INFORMATION

NOTE:

- Very few engine blocks should be replaced because of overheating. Replaced engine blocks may be called in to validate damage to the original block.
- Replacement of the engine block and/or transmission requires DPSM authorization.

Inspection and REPAIR PROCEDURE A - ALL

Operation Number	Description	Flat Rate Time	Defect Code	Symptom Code	Template ID	Failed Part Number
2185A9	Inspect the ATF warmer manufacture date, check engine for overheating and do REPAIR PROCEDURE A - Replace radiator and hoses - Flush engine	3.7 hrs	6ZF00	KG600	17-010M	06200-5NB-A58
2185A9	Inspect the ATF warmer manufacture date, check engine for overheating and do REPAIR PROCEDURE A - Replace radiator and hoses - Flush engine	3.7 hrs	6ZF00	KG600	17-010N	06200-5NB-A58
A	Add if ATF warmer tested because of manufacture date. - Includes replace or install ATF warmer	2.1 hrs				

Inspection and REPAIR PROCEDURE B - 2WD

Operation Number	Description	Flat Rate Time	Defect Code	Symptom Code	Template ID	Failed Part Number
2185B0	2WD - Inspect the ATF warmer manufacture date, check engine for overheating and do REPAIR PROCEDURE B -Replace engine, radiator, and hoses - Flush heater core - Includes updating PCM/TCM, idle learn, and alignment	12.2 hrs	6ZF00	KG600	17-010O	06200-5NB-A58
A	Add if the ATF warmer was tested and reinstalled.	0.9 hr				
2185B0	2WD - Inspect the ATF warmer manufacture date, check engine for overheating and do REPAIR PROCEDURE B -Replace engine, radiator, and hoses - Flush heater core - Includes updating PCM/TCM, idle learn, and alignment	12.2 hrs	6ZF00	KG600	17-010P	06200-5NB-A58
A	Add if the ATF warmer was tested and replaced.	0.9 hr				

Inspection and REPAIR PROCEDURE B - AWD

2185B1	AWD - Inspect the ATF warmer manufacture date, check engine for overheating and do REPAIR PROCEDURE B - Replace engine, radiator, and hoses - Flush heater core - Includes updating PCM/TCM, idle learn, and alignment	12.6 hrs	6ZF00	KG600	17-010Q	06200-5NB-A58
A	Add if the ATF warmer was tested and reinstalled.	0.9 hr				
2185B1	AWD - Inspect the ATF warmer manufacture date, check engine for overheating and do REPAIR PROCEDURE B - Replace engine, radiator, and hoses - Flush heater core - Includes updating PCM/TCM, idle learn, and alignment	12.6 hrs	6ZF00	KG600	17-010R	06200-5NB-A58
A	Add if the ATF warmer was tested and replaced.	0.9 hr				

Inspection and REPAIR PROCEDURE C – 2WD

NOTE:

- Very few engine blocks should be replaced because of overheating. Replaced engine blocks may be called in to validate damage to the original block.
- Replacement of the engine block and/or transmission requires DPSM authorization.

Operation Number	Description	Transmission Replacement Number	Flat Rate Time	Defect Code	Symptom Code	Template ID	Failed Part Number
2185B2	<p>2WD - Inspect the ATF warmer manufacture date and check engine for overheating and do REPAIR PROCEDURE C</p> <p>- Replace transmission, radiator, and hoses</p> <p>-Flush engine</p> <p>- Includes updating PCM/TCM, idle learn, and alignment</p>	06200-5NB-A58RM	10.5 hrs	6ZF00	KG600	17-010S	06200-5NB-A58
2185B2	<p>2WD - Inspect the ATF warmer manufacture date and check engine for overheating and do REPAIR PROCEDURE C</p> <p>- Replace transmission, radiator, and hoses</p> <p>-Flush engine</p> <p>- Includes updating PCM/TCM, idle learn, and alignment</p>	06200-5NB-A58RM	10.5 hrs	6ZF00	KG600	47-010S	06200-5NB-A58
A	Add if the vehicle has an accessory external transmission cooler with REPAIR PROCEDURE C		0.9 hr				

Inspection and REPAIR PROCEDURE C – 2WD with ACC

2185B2	<p>2WD with ACC - Inspect the ATF warmer manufacture date and check engine for overheating and do REPAIR PROCEDURE C</p> <ul style="list-style-type: none"> - Replace transmission, radiator, and hoses -Flush engine - Includes updating PCM/TCM, idle learn, and alignment 	06200-5NB-A68RM	10.5 hrs	6ZF00	KG600	57-010S	06200-5NB-A58
2185B2	<p>2WD with ACC - Inspect the ATF warmer manufacture date and check engine for overheating and do REPAIR PROCEDURE C</p> <ul style="list-style-type: none"> - Replace transmission, radiator, and hoses -Flush engine - Includes updating PCM/TCM, idle learn, and alignment 	06200-5NB-A68RM	10.5 hrs	6ZF00	KG600	27-010S	06200-5NB-A58
A	<p>Add if the vehicle has an accessory external transmission cooler with REPAIR PROCEDURE C</p>	06200-5NB-A68RM	0.9 hr				

Inspection and REPAIR PROCEDURE C – 2WD with ACC and Idle-stop

2185B2	<p>2WD with ACC and Idle-stop - Inspect the ATF warmer manufacture date and check engine for overheating and do REPAIR PROCEDURE C</p> <ul style="list-style-type: none"> - Replace transmission, radiator, and hoses - Flush engine - Includes updating PCM/TCM, idle learn, and alignment 	06200-5NB-A78RM	10.5 hrs	6ZF00	KG600	67-010S	06200-5NB-A58
2185B2	<p>2WD with ACC and Idle-stop - Inspect the ATF warmer manufacture date and check engine for overheating and do REPAIR PROCEDURE C</p> <ul style="list-style-type: none"> - Replace transmission, radiator, and hoses - Flush engine - Includes updating PCM/TCM, idle learn, and alignment 	06200-5NB-A78RM	10.5 hrs	6ZF00	KG600	37-010S	06200-5NB-A58
A	<p>Add if the vehicle has an accessory external transmission cooler with REPAIR PROCEDURE C</p>		0.9 hr				

Inspection and REPAIR PROCEDURE C – AWD

Operation Number	Description	Transmission Replacement Number	Flat Rate Time	Defect Code	Symptom Code	Template ID	Failed Part Number
2185B3	<p>AWD - Inspect the ATF warmer manufacture date and check engine for overheating and do REPAIR PROCEDURE C</p> <ul style="list-style-type: none"> - Replace transmission, radiator, and hoses -Flush engine - Includes updating PCM/TCM, idle learn, and alignment 	06200-5NC-A59RM	10.9 hrs	6ZF00	KG600	17-010T	06200-5NB-A58
2185B3	<p>AWD - Inspect the ATF warmer manufacture date and check engine for overheating and do REPAIR PROCEDURE C</p> <ul style="list-style-type: none"> - Replace transmission, radiator, and hoses -Flush engine - Includes updating PCM/TCM, idle learn, and alignment 	06200-5NC-A59RM	10.9 hrs	6ZF00	KG600	47-010T	06200-5NB-A58
A	Add if the vehicle has an accessory external transmission cooler with REPAIR PROCEDURE C		0.9 hr				

Inspection and REPAIR PROCEDURE C – AWD with ACC

2185B3	<p>AWD with ACC - Inspect the ATF warmer manufacture date and check engine for overheating and do REPAIR PROCEDURE C</p> <ul style="list-style-type: none"> - Replace transmission, radiator, and hoses -Flush engine - Includes updating PCM/TCM, idle learn, and alignment 	06200-5NC-A69RM	10.9 hrs	6ZF00	KG600	57-010T	06200-5NB-A58
2185B3	<p>AWD with ACC - Inspect the ATF warmer manufacture date and check engine for overheating and do REPAIR PROCEDURE C</p> <ul style="list-style-type: none"> - Replace transmission, radiator, and hoses -Flush engine - Includes updating PCM/TCM, idle learn, and alignment 	06200-5NC-A69RM	10.9 hrs	6ZF00	KG600	27-010T	06200-5NB-A58
A	<p>Add if the vehicle has an accessory external transmission cooler with REPAIR PROCEDURE C</p>		0.9 hr				

Inspection and REPAIR PROCEDURE C – AWD with ACC and Idle-stop

2185B3	<p>AWD with ACC and Idle-stop - Inspect the ATF warmer manufacture date and check engine for overheating and do REPAIR PROCEDURE C</p> <ul style="list-style-type: none"> - Replace transmission, radiator, and hoses - Flush engine - Includes updating PCM/TCM, idle learn, and alignment 	06200-5NC-A79RM	10.9 hrs	6ZF00	KG600	67-010T	06200-5NB-A58
2185B3	<p>AWD with ACC and Idle-stop - Inspect the ATF warmer manufacture date and check engine for overheating and do REPAIR PROCEDURE C</p> <ul style="list-style-type: none"> - Replace transmission, radiator, and hoses - Flush engine - Includes updating PCM/TCM, idle learn, and alignment 	06200-5NC-A79RM	10.9 hrs	6ZF00	KG600	37-010T	06200-5NB-A58
A	<p>Add if the vehicle has an accessory external transmission cooler with REPAIR PROCEDURE C</p>		0.9 hr				

Inspection and REPAIR PROCEDURE D – 2WD

NOTE:

- Very few engine blocks should be replaced because of overheating. Replaced engine blocks may be called in to validate damage to the original block.
- Replacement of the engine block and/or transmission requires DPSM authorization.

Operation Number	Description	Transmission Replacement Number	Flat Rate Time	Defect Code	Symptom Code	Template ID	Failed Part Number
2185C2	<p>2WD - Inspect the ATF warmer manufacture date and check vehicle for overheating and do REPAIR PROCEDURE D</p> <p>-Replace engine, transmission, radiator, and hoses</p> <p>-Flush heater core</p> <p>- Includes updating PCM/TCM, idle learn and alignment</p>	06200-5NB-A58RM	13.1 hrs	6ZF00	KG600	47-010W	06200-5NB-A58
2185C2	<p>2WD - Inspect the ATF warmer manufacture date and check vehicle for overheating and do REPAIR PROCEDURE D</p> <p>-Replace engine, transmission, radiator, and hoses</p> <p>-Flush heater core</p> <p>- Includes updating PCM/TCM, idle learn and alignment</p>	06200-5NB-A58RM	13.1 hrs	6ZF00	KG600	17-010W	06200-5NB-A58
A	Add if the vehicle has an accessory external transmission cooler.		0.9 hr				

Inspection and REPAIR PROCEDURE D – 2WD with ACC

2185C2	<p>2WD with ACC - Inspect the ATF warmer manufacture date and check vehicle for overheating and do REPAIR PROCEDURE D</p> <ul style="list-style-type: none"> -Replace engine, transmission, radiator, and hoses -Flush heater core - Includes updating PCM/TCM, idle learn and alignment 	06200-5NB-A68RM	13.1 hrs	6ZF00	KG600	57-010W	06200-5NB-A58
2185C2	<p>2WD with ACC - Inspect the ATF warmer manufacture date and check vehicle for overheating and do REPAIR PROCEDURE D</p> <ul style="list-style-type: none"> -Replace engine, transmission, radiator, and hoses -Flush heater core - Includes updating PCM/TCM, idle learn and alignment 	06200-5NB-A68RM	13.1 hrs	6ZF00	KG600	27-010W	06200-5NB-A58
A	Add if the vehicle has an accessory external transmission cooler.		0.9 hr				

Inspection and REPAIR PROCEDURE D – 2WD with ACC and Idle-stop

2185C2	<p>2WD with ACC and Idle-stop - Inspect the ATF warmer manufacture date and check vehicle for overheating and do REPAIR PROCEDURE D</p> <ul style="list-style-type: none"> -Replace engine, transmission, radiator, and hoses -Flush heater core - Includes updating PCM/TCM, idle learn and alignment 	06200-5NB-A78RM	13.1 hrs	6ZF00	KG600	67-010W	06200-5NB-A58
2185C2	<p>2WD with ACC and Idle-stop - Inspect the ATF warmer manufacture date and check vehicle for overheating and do REPAIR PROCEDURE D</p> <ul style="list-style-type: none"> -Replace engine, transmission, radiator, and hoses -Flush heater core - Includes updating PCM/TCM, idle learn and alignment 	06200-5NB-A78RM	13.1 hrs	6ZF00	KG600	37-010W	06200-5NB-A58
A	Add if the vehicle has an accessory external transmission cooler.		0.9 hr				

Inspection and REPAIR PROCEDURE D – AWD

Operation Number	Description	Transmission Replacement Number	Flat Rate Time	Defect Code	Symptom Code	Template ID	Failed Part Number
2185C3	<p>AWD - Inspect the ATF warmer manufacture date and check vehicle for overheating and do REPAIR PROCEDURE D</p> <ul style="list-style-type: none"> -Replace engine, transmission, radiator, and hoses -Flush heater core - Includes updating PCM/TCM, idle learn and alignment 	06200-5NC-A59RM	13.5 hrs	6ZF00	KG600	47-010X	06200-5NB-A58
2185C3	<p>AWD - Inspect the ATF warmer manufacture date and check vehicle for overheating and do REPAIR PROCEDURE D</p> <ul style="list-style-type: none"> -Replace engine, transmission, radiator, and hoses -Flush heater core - Includes updating PCM/TCM, idle learn and alignment 	06200-5NC-A59RM	13.5 hrs	6ZF00	KG600	17-010X	06200-5NB-A58
A	Add if the vehicle has an accessory external transmission cooler.		0.9 hr				

Inspection and REPAIR PROCEDURE D – AWD with ACC

2185C3	<p>AWD with ACC - Inspect the ATF warmer manufacture date and check vehicle for overheating and do REPAIR PROCEDURE D</p> <ul style="list-style-type: none"> -Replace engine, transmission, radiator, and hoses -Flush heater core - Includes updating PCM/TCM, idle learn and alignment 	06200-5NC-A69RM	13.5 hrs	6ZF00	KG600	57-010X	06200-5NB-A58
2185C3	<p>AWD with ACC - Inspect the ATF warmer manufacture date and check vehicle for overheating and do REPAIR PROCEDURE D</p> <ul style="list-style-type: none"> -Replace engine, transmission, radiator, and hoses -Flush heater core - Includes updating PCM/TCM, idle learn and alignment 	06200-5NC-A69RM	13.5 hrs	6ZF00	KG600	27-010X	06200-5NB-A58
A	Add if the vehicle has an accessory external transmission cooler.		0.9 hr				

Inspection and REPAIR PROCEDURE D – AWD with ACC and Idle-stop

2185C3	<p>AWD with ACC and Idle-stop - Inspect the ATF warmer manufacture date and check vehicle for overheating and do REPAIR PROCEDURE D</p> <ul style="list-style-type: none"> -Replace engine, transmission, radiator, and hoses -Flush heater core - Includes updating PCM/TCM, idle learn and alignment 	06200-5NC-A79RM	13.5 hrs	6ZF00	KG600	67-010X	06200-5NB-A58
2185C3	<p>AWD with ACC and Idle-stop - Inspect the ATF warmer manufacture date and check vehicle for overheating and do REPAIR PROCEDURE D</p> <ul style="list-style-type: none"> -Replace engine, transmission, radiator, and hoses -Flush heater core - Includes updating PCM/TCM, idle learn and alignment 	06200-5NC-A79RM	13.5 hrs	6ZF00	KG600	37-010X	06200-5NB-A58
A	Add if the vehicle has an accessory external transmission cooler.		0.9 hr				

PARTS INFORMATION – WARMER INSPECT AND REPLACEMENT

Part Name	Part Number	Quantity
ATF Warmer Kit (Includes O-Rings)	06224-5J4-305	1
Fitting (used only with accessory cooler)	25910-5NC-003	2

REQUIRED MATERIALS – ATF WARMER INSPECTION AND REPLACEMENT

Part Name	Part Number	Quantity
ATF Type 3.1 NOTE: 1 quart will fill 5 vehicles unless the vehicle has an accessory ATF cooler.	08200-9017	1

NOTE: Order the Honda ATF for this campaign.

PARTS INFORMATION – REPAIR PROCEDURE A

Part Name	Part Number	Quantity
Radiator (DENSO)	19010-5J6-A01	1
Warmer Hose B (ATF)	19433-5J2-A00	1
Water Hose A	19521-5J6-A50	1
Water Hose B	19522-5J6-A00	1
Water Hose C	19523-5J6-A10	1
Water Hose (Lower) (A)	19502-5J6-A50	1
Water Hose (Lower) (B)	19504-5J2-A50	1
Water Hose (Upper)	19501-5J6-A10	1
Reserve Tank Tube B	19104-5J6-A00	1
Reserve Tank Tube A	19103-5J6-A00	1
Water Inlet Hose	79721-TZ5-A10	1
Water Outlet Hose	79725-TZ5-A11	1
Warmer Hose A (ATF)	19432-5J2-A50	1
Thermostat Cover Assembly	19315-5J2-A01	1
O-Ring (Denso)	91307-RTA-005	2
Reserve Tank Joint	19106-RSA-G00	1
Reserve Tank	19101-5J6-A00	1
Reserve Tank Cap	19102-5J6-A00	1

REQUIRED MATERIALS – REPAIR PROCEDURE A

Part Name	Part Number	Quantity
Coolant Type 2	OL999-9011A	16

PARTS INFORMATION – REPAIR PROCEDURE B

Part Name	Part Number	Quantity
Cylinder Block Assembly	10002-5J6-A10	1
Cylinder Head Assembly (Front)	10004-5J6-A11	1
Cylinder Head Assembly (Rear)	10005-5J6-A11	1
Flange Bolt (12 x 70 mm)	90051-R97-000	1
Flange Bolt (12 x 120 mm)	90051-5J4-000	1
Flange Bolt (10 x 60 mm)	90168-TA1-A00	2
Flange Nut (12 mm)	90371-SAA-010	4
Flange Bolt (10 x 35 mm)	90163-SDA-A01	2
Pre-Chamber Gasket	18393-SDB-A00	1
Exhaust Pipe Gasket (NOK)	18212-SA7-003	2
Self-Lock Nut (10 mm)	90212-SA5-003	9
Bolt (12 point 8 x 21 mm) (AWD Only)	90113-S10-000	8
Flange Bolt (10 x 29 mm)	90382-SH9-003	2
Shaft Ring Seal Kit (AWD)	06235-5L9-000	1
Flange Nut (12 mm)	90362-SZA-A00	4
Split Pin (3.0 x 22 mm)	94201-30220	2
Castle Nut (14 mm)	90365-STX-A00	2
Flange Bolt (12 x 30 mm)	90161-SHJ-A00	4
Flange Bolt (14 x 140 mm)	90165-TZ5-A10	2
Flange Bolt (14 x 125 mm)	90165-TK8-A00	2
Snap Ring (32 x 2.2 mm)	44319-STX-A01	1
Set Ring (32 x 2.2 mm)	44319-STX-A60	1
Flange Bolt (10 x 30 mm)	90163-SDB-A00	3
Spindle Nut	90305-S3V-A11	2
EGR Pipe Gasket A	18716-R70-A01	1
EGR Pipe Gasket B	18719-R70-A01	1
Exhaust Chamber Gasket (Nippon Leakless)	18115-5G0-A01	2
Self-Lock Nut (8 mm)	90212-RCA-A01	8
Intake Manifold Cover Gasket (Upper)	17112-5G0-A01	1
Intake Manifold Gasket (Nippon Leakless)	17105-R9P-A01	1
Front Intake Manifold Base Gasket	17055-R9P-A01	1

Rear Intake Manifold Base Gasket	17065-R9P-A01	1
Throttle Body Gasket	16176-RYE-A10	1
Timing Belt Idler Bolt	14551-RCA-A01	1
Flange Bolt (12 x 45 mm)	90165-SDA-A00	1
Flange Bolt (10 x 30 mm)	90103-SV4-013	3
EGR Valve Gasket (ISHINO)	18715-PB2-000	1
O-Ring (31.2 x 4.1 mm) (NOK)	91314-PH7-003	2
Fuel Joint Pipe Set	16012-R9P-315	1
O-Ring	91311-5A2-A01	1
Sealing Washer (12 mm)	16705-5A2-A01	2
Injector Clip	16451-5A2-A01	6
Injector Seal Set	16453-R9P-A00	1
Rear Water Passage Gasket (NIPPON LEAKLESS)	19412-5G0-A01	1
Front Water Passage Gasket (NIPPON LEAKLESS)	19411-5G0-A02	1
Rear Cylinder Head Gasket (NIPPON LEAKLESS)	12261-R9P-A01	1
Front Cylinder Head Gasket (NIPPON LEAKLESS)	12251-R9P-A01	1
Radiator (DENSO)	19010-5J6-A01	1
Warmer Hose B (ATF)	19433-5J2-A00	1
Water Hose A	19521-5J6-A50	1
Water Hose C	19523-5J6-A10	1
Water Hose (Lower) (A)	19502-5J6-A50	1
Water Hose (Lower) (B)	19504-5J2-A50	1
Water Hose (Upper)	19501-5J6-A10	1
Reserve Tank Tube B	19104-5J6-A00	1
Reserve Tank Tube A	19103-5J6-A00	1
Water Inlet Hose	79721-TZ5-A10	1
Water Outlet Hose	79725-TZ5-A11	1
Thermostat Cover Assembly	19315-5J2-A01	1
Warmer Hose A (ATF)	19432-5J2-A50	1
Connecting Pipe	19505-5J2-A00	1
Water Passage	19410-5J2-A00	1
O-Ring (Denso)	91307-RTA-005	2
Reserve Tank Joint	19106-RSA-G00	1
Reserve Tank Cap	19102-5J6-A00	1

Oil Filter	15400-PLM-A02	1
Accessory Cooler Kit (If equipped)	06255-5NC-326	1
Flange Bolt (12 x 75 mm)	90163-TA0-A00	1
Water Hose B	19522-5J6-A00	1
Tank Reserve	19101-5J6-A00	1

REQUIRED MATERIALS – REPAIR PROCEDURE B

Part Name	Part Number	Quantity
ATF Type 3.1 (only if the vehicle is equipped with an accessory cooler)	08200-9017	1
Coolant Type 2	OL999-9011A	3
Acura motor oil 0W-20	08798-9073	6

NOTE: Order the Honda ATF for this campaign.

PARTS INFORMATION – REPAIR PROCEDURE C

Part Name	Part Number	Quantity
Transmission		1
2WD	06200-5NB-A58RM	
2WD with ACC	06200-5NB-A68RM	
2WD with ACC with auto idle stop	06200-5NB-A78RM	
AWD	06200-5NC-A59RM	
AWD with ACC	06200-5NC-A69RM	
AWD with ACC with auto idle stop	06200-5NC-A79RM	
Flange Bolt (12 x 70 mm)	90051-R97-000	1
Flange Bolt (12 x 120 mm)	90051-5J4-000	1
Flange Bolt (10 x 60 mm)	90168-TA1-A00	2
Flange Nut (12 mm)	90371-SAA-010	4
Flange Bolt (10 x 35 mm)	90163-SDA-A01	2
Pre-Chamber Gasket	18393-SDB-A00	1
Exhaust Pipe Gasket (NOK)	18212-SA7-003	2
Self-Lock Nut (10 mm)	90212-SA5-003	9
Bolt (12 point 8 x 21 mm)	90113-S10-000	8
Flange Bolt (12 x 29 mm)	90382-SH9-003	2
Shaft Ring Seal Kit (AWD)	06235-5L9-000	1
Flange Nut (12 mm)	90362-SZA-A00	4
Split Pin (3.0 x 22 mm)	94201-30220	2
Castle Nut (14 mm)	90365-STX-A00	2
Flange Bolt (12 x 30 mm)	90161-SHJ-A00	4
Flange Bolt (14 x 140 mm)	90165-TZ5-A10	2
Flange Bolt (10 x 125 mm)	90165-TK8-A00	2
Snap Ring (32 x 2.2 mm)	44319-STX-A01	1
Set Ring (32 x 2.2 mm)	44319-STX-A60	1
Flange Bolt (10 x 30 mm)	90163-SDB-A00	3
Radiator (DENSO)	19010-5J6-A01	1
Warmer Hose B (ATF)	19433-5J2-A00	1
Water Hose A	19521-5J6-A50	1
Water Hose C	19523-5J6-A10	1
Water Hose (Lower) (A)	19502-5J6-A50	1
Water Hose (Lower) (B)	19504-5J2-A50	1
Water Hose (Upper)	19501-5J6-A10	1
Reserve Tank Tube B	19104-5J6-A00	1
Reserve Tank Tube A	19103-5J6-A00	1
Water Inlet Hose	79721-TZ5-A10	1

Water Outlet Hose	79725-TZ5-A11	1
Warmer Hose A (ATF)	19432-5J2-A50	1
Thermostat Cover Assembly	19315-5J2-A01	1
O-Ring (DENSO)	91307-RTA-005	2
Reserve Tank Joint	19106-RSA-G00	1
Accessory Cooler Kit (ATF) If equipped)	06255-5NC-326	1
Water Hose B	19522-5J6-A00	1
Reserve Tank	19101-5J6-A00	1
Reserve Tanks Cap	19102-5J6-A00	1

REQUIRED MATERIALS – REPAIR PROCEDURE C

Part Name	Part Number	Quantity
ATF Type 3.1 NOTE: 1 quart will fill 5 vehicles unless the vehicle has an accessory ATF cooler.	08200-9017	1
Coolant Type 2	OL999-9011A	16

NOTE: Order the Honda ATF for this campaign.

PARTS INFORMATION – REPAIR PROCEDURE D

Part Name	Part Number	Quantity
Transmission		1
2WD	06200-5NB-A58RM	
2WD with ACC	06200-5NB-A68RM	
2WD with ACC with auto idle stop	06200-5NB-A78RM	
AWD	06200-5NC-A59RM	
AWD with ACC	06200-5NC-A69RM	
AWD with ACC with auto idle stop	06200-5NC-A79RM	
Cylinder Block Assembly	10002-5J6-A10	1
Cylinder Head Assembly (Front)	10004-5J6-A11	1
Cylinder Head Assembly (Rear)	10005-5J6-A11	1
Flange Bolt (12 x 70 mm)	90051-R97-000	1
Flange Bolt (12 x 120 mm)	90051-5J4-000	1
Flange Bolt (10 x 60 mm)	90168-TA1-A00	2
Flange Nut (12 mm)	90371-SAA-010	4
Flange Bolt (10 x 35 mm)	90163-SDA-A01	2
Pre-Chamber Gasket	18393-SDB-A00	1
Exhaust Pipe Gasket (NOK)	18212-SA7-003	2
Self-Lock Nut (10 mm)	90212-SA5-003	9
Bolt (12 point 8 x 21 mm) (AWD Only)	90113-S10-000	8
Flange Bolt (10 x 29 mm)	90382-SH9-003	2
Shaft Ring Seal Kit (AWD)	06235-5L9-000	1
Flange Nut (12 mm)	90362-SZA-A00	4
Split Pin (3.0 x 22 mm)	94201-30220	2
Castle Nut (14 mm)	90365-STX-A00	2
Flange Bolt (12 x 30 mm)	90161-SHJ-A00	4
Flange Bolt (14 x 140 mm)	90165-TZ5-A10	2
Flange Bolt (14 x 125 mm)	90165-TK8-A00	2
Snap Ring (32 x 2.2 mm)	44319-STX-A01	1
Set Ring (32 x 2.2 mm)	44319-STX-A60	1
Flange Bolt (10 x 30 mm)	90163-SDB-A00	3
Spindle Nut	90305-S3V-A11	2
EGR Pipe Gasket A	18716-R70-A01	1
EGR Pipe Gasket B	18719-R70-A01	1

Exhaust Chamber Gasket (Nippon Leakless)	18115-5G0-A01	2
Self-Lock Nut (8 mm)	90212-RCA-A01	8
Intake Manifold Cover Gasket (Upper)	17112-5G0-A01	1
Intake Manifold Gasket (Nippon Leakless)	17105-R9P-A01	1
Front Intake Manifold Base Gasket	17055-R9P-A01	1
Rear Intake Manifold Base Gasket	17065-R9P-A01	1
Throttle Body Gasket	16176-RYE-A10	1
Timing Belt Idler Bolt	14551-RCA-A01	1
Flange Bolt (12 x 45 mm)	90165-SDA-A00	1
Flange Bolt (10 x 30 mm)	90103-SV4-013	3
EGR Valve Gasket (ISHINO)	18715-PB2-000	1
O-Ring (31.2 x 4.1 mm) (NOK)	91314-PH7-003	2
Fuel Joint Pipe Set	16012-R9P-315	1
O-Ring	91311-5A2-A01	1
Sealing Washer (12 mm)	16705-5A2-A01	2
Injector Clip	16451-5A2-A01	6
Injector Seal Set	16453-R9P-A00	1
Rear Water Passage Gasket (NIPPON LEAKLESS)	19412-5G0-A01	1
Front Water Passage Gasket (NIPPON LEAKLESS)	19411-5G0-A02	1
Rear Cylinder Head Gasket (NIPPON LEAKLESS)	12261-R9P-A01	1
Front Cylinder Head Gasket (NIPPON LEAKLESS)	12251-R9P-A01	1
Radiator (DENSO)	19010-5J6-A01	1
Warmer Hose B (ATF)	19433-5J2-A00	1
Water Hose A	19521-5J6-A50	1
Water Hose C	19523-5J6-A10	1
Water Hose (Lower) (A)	19502-5J6-A50	1
Water Hose (Lower) (B)	19504-5J2-A50	1
Water Hose (Upper)	19501-5J6-A10	1
Reserve Tank Tube B	19104-5J6-A00	1
Reserve Tank Tube A	19103-5J6-A00	1
Water Inlet Hose	79721-TZ5-A10	1
Water Outlet Hose	79725-TZ5-A11	1
Thermostat Cover Assembly	19315-5J2-A01	1

Warmer Hose A (ATF)	19432-5J2-A50	1
Connecting Pipe	19505-5J2-A00	1
Water Passage	19410-5J2-A00	1
O-Ring (Denso)	91307-RTA-005	2
Reserve Tank Joint	19106-RSA-G00	1
Reserve Tank Cap	19102-5J6-A00	1
Oil Filter	15400-PLM-A02	1
Accessory Cooler Kit (If equipped)	06255-5NC-326	1
Flange Bolt (12 x 75 mm)	90163-TA0-A00	1
Water Hose B	19522-5J6-A00	1
Tank Reserve	19101-5J6-A00	1

REQUIRED MATERIALS – REPAIR PROCEDURE D

Part Name	Part Number	Quantity
ATF Type 3.1 (only if the vehicle is equipped with an accessory cooler)	08200-9017	1
Coolant Type 2	OL999-9011A	3
Acura motor oil 0W-20	08798-9073	7

NOTE: Order the Honda ATF for this campaign.