



210 Inverness Center Drive
Birmingham, AL 35242

Telephone: 205-991-7733
Facsimile: 205-991-9993
www.altec.com

December 11, 2017

Dear Altec Owner,

Altec Industries, Inc. has been notified of a field campaign to be performed by Kohler Co., supplier of engines.

Refer to SIL 671 for the details of the field campaign and the responsibilities of customers who own the equipment having the engines involved in the campaign.

Contact Superior Diesel, 715-365-0549, with any questions or for further assistance.

We regret this inconvenience; however we are taking this action in the interest of your safety and continued satisfaction with Altec products.

Thank you for your immediate attention on this important matter.



Altec Industries, Inc.
Chipper Division
Mt. Airy, NC

SIL 671

Service Information Letter

Date: December 11, 2017

Units Affected: All Altec Chippers Equipped With a 74 hp Kohler Engine

Engine Water Pump Field Campaign

Altec is committed to providing our customers reliable products from initial delivery throughout the useful life of the machine.

Altec has been notified of a Kohler Engines Field Campaign that will improve the reliability of the water pump on the Kohler engine. The field campaign is Campaign ME6332Z. A copy of the letter from Kohler Engines explaining the field campaign is attached to this SIL. Also attached is a contact list for the Kohler Engines Service Network.

The field campaign is being handled completely by the Kohler Engine representative, Superior Diesel. Customers should contact Superior Diesel at 715-365-0549 for the parts and any details concerning this campaign. Altec is not providing parts, labor or warranty to complete this campaign. Customers must contact Superior Diesel with any questions about this campaign.



Field Campaign

September 2017
Campaign ME6332Z

Dear Dealer,

We wish to inform that Kohler Engines has initiated a field campaign as outlined in the Field Campaign letter illustrated below.

The Field Campaign regards a limited number of KDI (Kohler Direct Injection) Engines installed on Superior Diesel chipper packages. The field campaign will improve the reliability of the water pumps using a fan extension of over ¾ inch in length. Please be aware that customers using this chipper application with a Kohler KDI Engines will be contacting a local Kohler Diesel Dealer to arrange for this field repair.

The field repair will consist of a replacement water pump that is more robust in this application. The kit will also include instructions on what is required to complete the Field Campaign.

The kit can be ordered from Superior Diesel at 715-365-0549. When placing an order for any parts you will need to supply the **UNIT SERIAL #, ENGINE SERIAL #, ENGINE HRS, and SHIPPING ADDRESS.**

Within 30 days of the repair submit a labor only "Warranty Repair" warranty claim using the ED0065845578 as the Defective Part Number, enter ME6567Z in the Work Unit field, and 2.5 hours of labor using the labor code of 9999. Please submit a labor only warranty claim within 30 days of repair.

If you have questions regarding this field campaign please contact:

KOHLER Engines Service Department during normal business hours (CST) at 920-459-1579 option # 2.



KOHLER[®] Engines

Service Network

Power Equipment Systems

Eric Erickson - Sales Manager

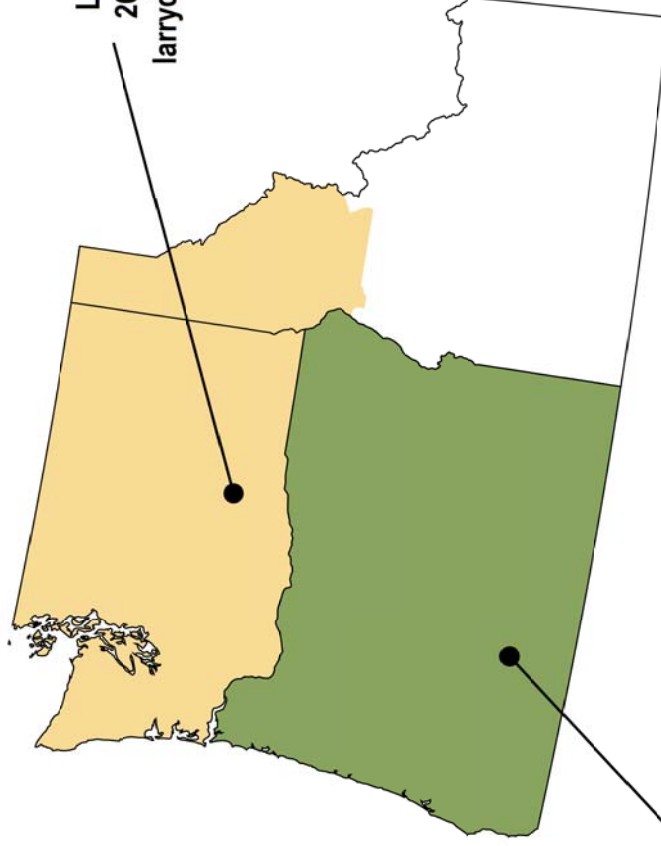
971.600.7246

erice@pesnet.com

George Flande - Technical

503.585.6120

georgef@pesnet.com



Larry Dean
206.229.2522
larryd@pesnet.com

Mike Stevens
503.702.1029
mikes@pesnet.com

Kohler Area Manager
Shawn Bozarth
920.917.8194
shawn.bozarth@kohler.com

H.G. Makelim Co.

Tony Ghimenti - Sales Manager

650.827.7576

tghimenti@hgmakelim.com

Ron Smith - Division Service Manager

650.827.7530

rsmith@hgmakelim.com

Branden Polugar - West Coast Service Manager

650.827.7578

bpolugar@hgmakelim.com

Brent Wiegand - Mountain Service Manager

650.827.7561

bwiegand@hgmakelim.com

Joe Hofmann
406.860.5226

jhofmann@hgmakelim.com

Rick Veenstra
970.209.0325

rveenstra@hgmakelim.com

Rick Millen
303.408.6220

rmillen@hgmakelim.com

Roy Richter
925.997.5912

rrichter@hgmakelim.com

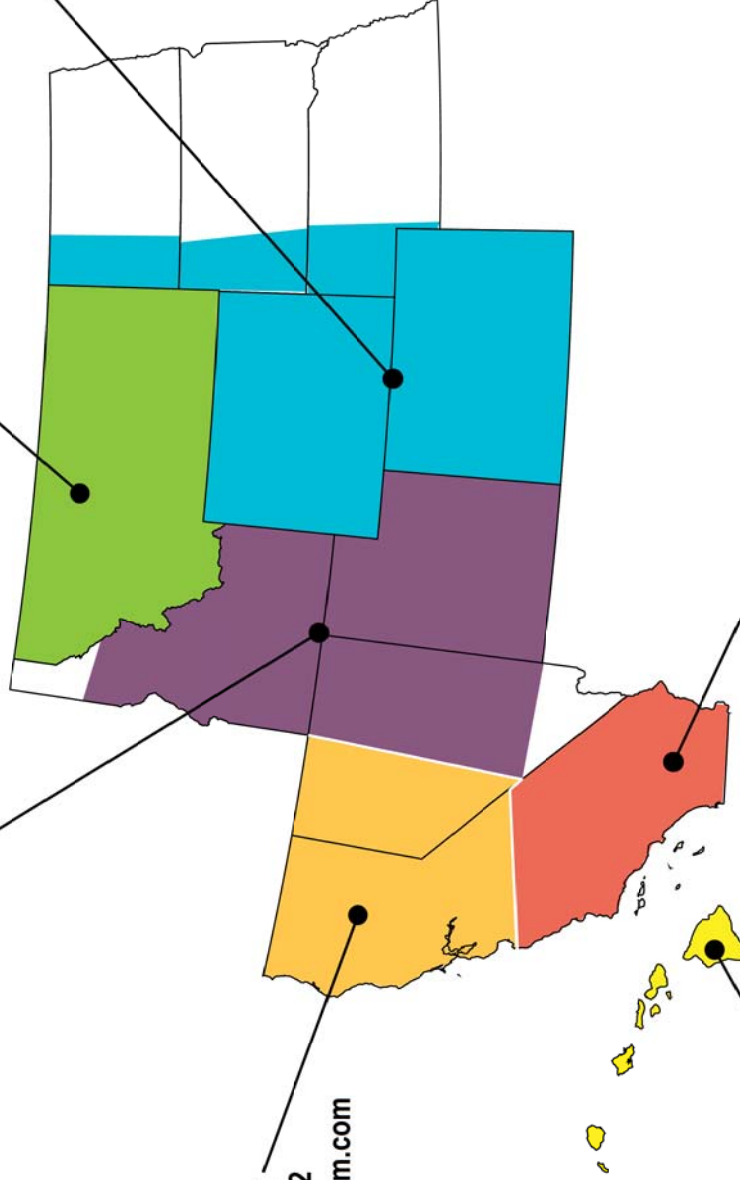
Roger Norman
714.715.8899

rnorman@hgmakelim.com

Frankel Sivongxay
650.827.7570

fsivongxay@hgmakelim.com

Kohler Area Manager
Joshua Lim
626.684.0836
joshua.lim@kohler.com



Loftin Equipment Co., Inc.

- Sales Manager

Jon Uber - Technical

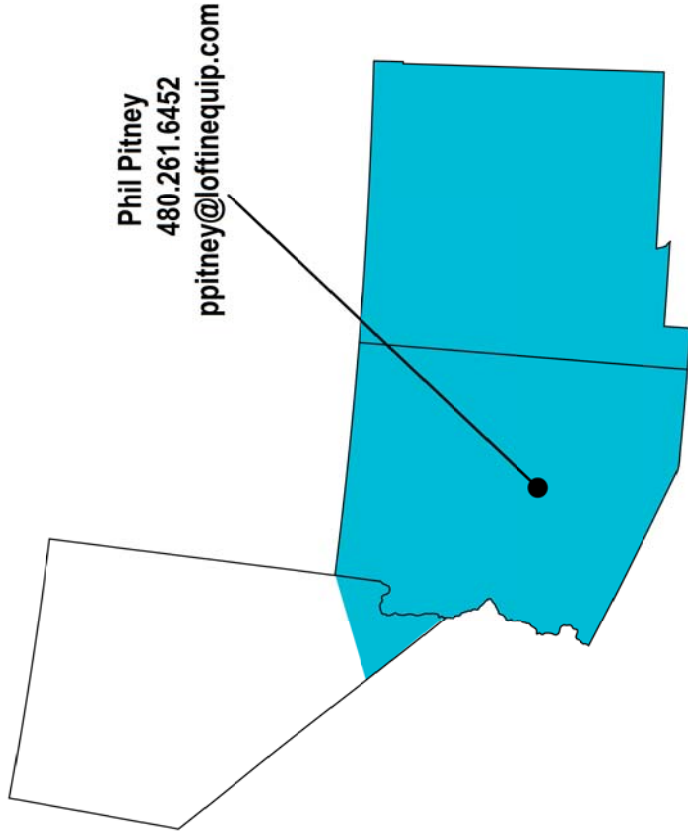
602.272.9466 ext. 224

juber@loftinequip.com

Adam Hancock - Technical

602.272.9466 ext. 205

ahancock@loftinequip.com



Kohler Area Manager
Joshua Lim
626.684.0836
joshua.lim@kohler.com

Medart, Inc.

Ken Erickson - Sales Manager
636.236.7052
Bryan Jones - Technical
636.212.1647

krerickson@medartinc.com
bjjones@medartinc.com

Randy Praeuner
636.212.1664
rcpraeuner@medartinc.com

Steve Koranda
636.212.1665
sfkoranda@medartinc.com

Larry Blakesley
636.212.1638
ldblakesley@medartinc.com

Greg Herpin
660.864.6454
gaherpin@medartinc.com

Scott Rutledge
636.212.1640
sarutledge@medartinc.com

Don Whitacre
636.212.1639
dewhitacre@medartinc.com

Terry Vice
636.212.1648
tlvice@medartinc.com

Ricky Lee
316.214.2697
rlee@medartinc.com

Dennis Roberts
618.719.1702
dproberts@medartinc.com

Bob Clark
636.212.5503
bgclark@medartinc.com

Steve Daniels
636.212.2291
sodaniels@medartinc.com

Bob Rambo
636.212.1871
rdrambo@medartinc.com

Rob Schrader
636.212.1658
reschrader@medartinc.com

Ashton Carpenter
636.212.1874
acarpenter@medartinc.com

Kohler Area Manager
Gerry Davis
636.266.8286
gerry.davis@kohler.com

George Hughes
636.212.4529
gbhughes@medartinc.com

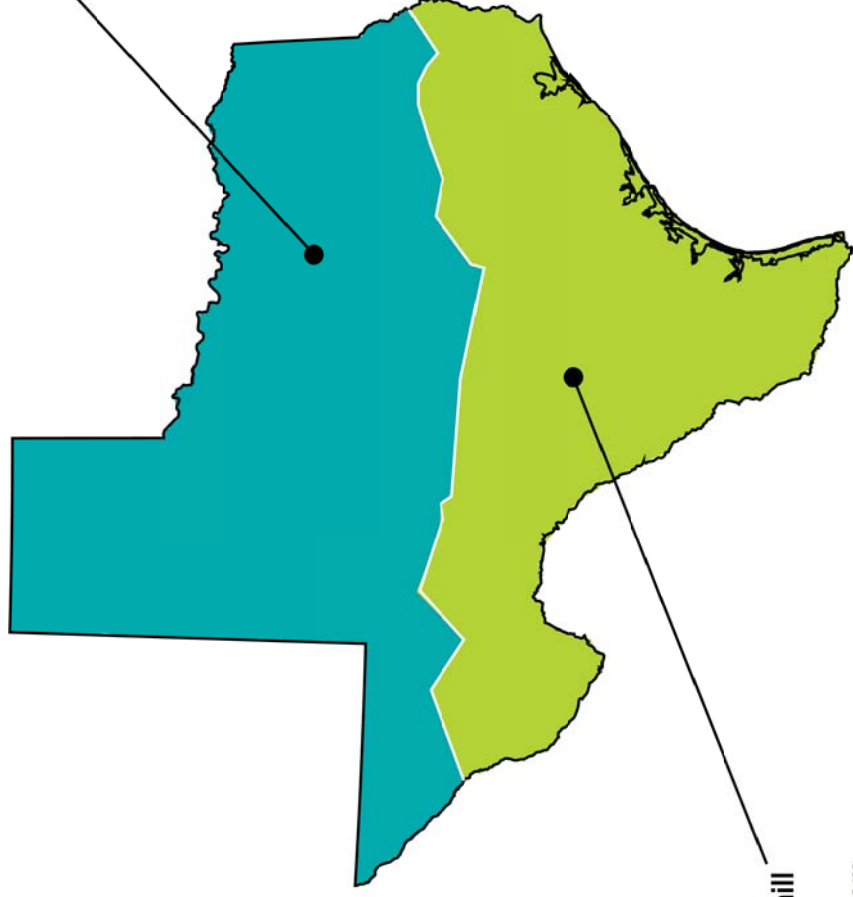
Waukesha-Pearce Industries, Inc.

Mike Krueger - Sales Manager
Bruce Taylor - Technical
Kiva Watkins

903.821.3304
800.281.4589
800.281.4589

kruegm@wpi.com
kohlerservice@wpi.com
kohlerservice@wpi.com

JD Hudson
817.692.1924
hudsoj@wpi.com

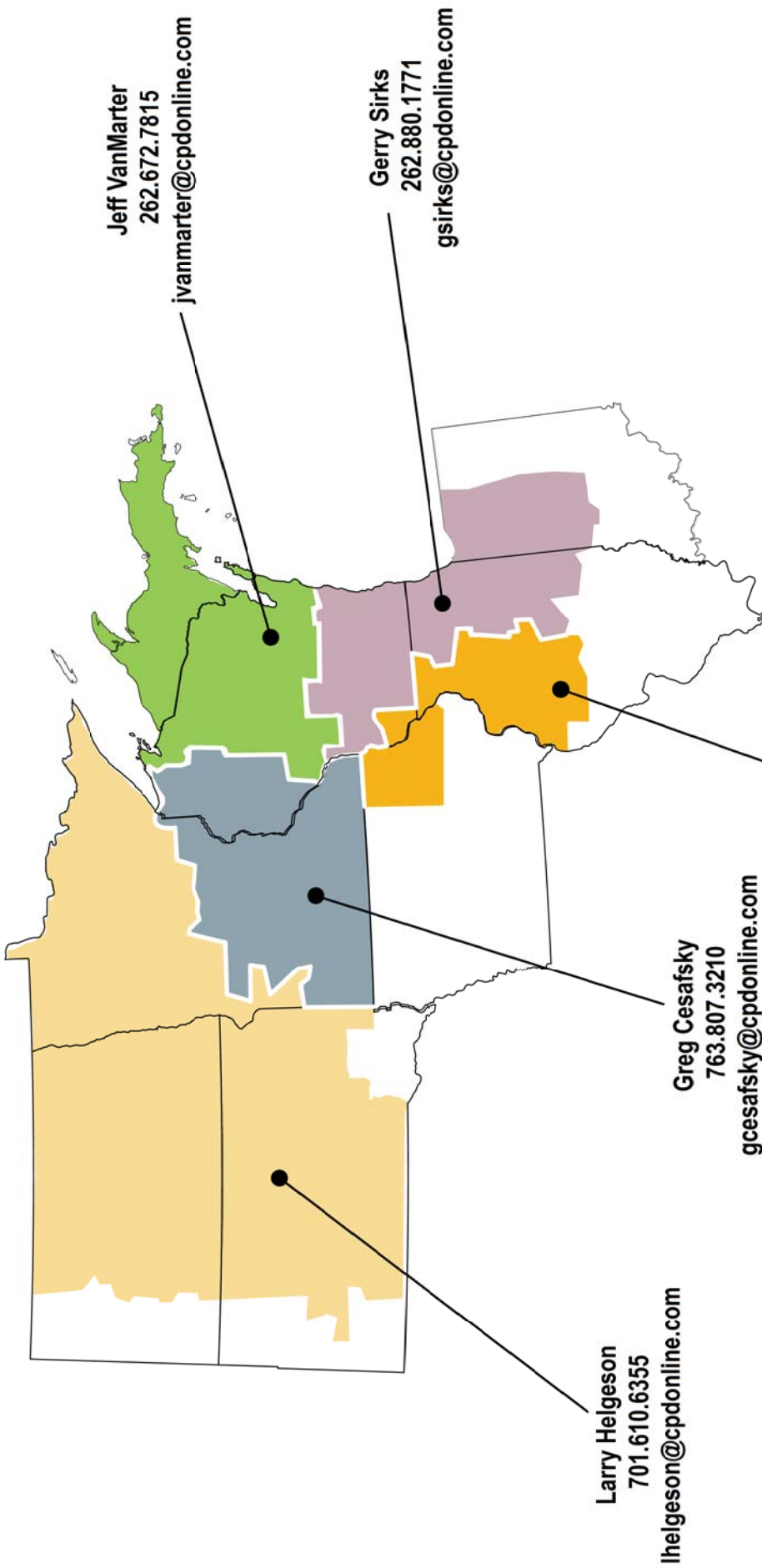


Richard Underhill
281.202.8640
underhill@wpi.com

Kohler Area Manager
Joshua Lim
626.684.0836
joshua.lim@kohler.com

Central Power Distributors, Inc.

John Hedges - Sales Manager 763.277.1150/612.747.0901 jhedges@cpdonline.com
Mark Geraets - Technical 800.364.7938 X128 mgeraets@cpdonline.com
Bill Beck - Technical 800.364.7938 X163 bbeck@cpdonline.com



Andy Puetz
608.778.6886
apuetz@cpdonline.com

Kohler Area Manager
Allan Olson
612.804.9786
allan.olson@kohler.com

Gardner, Inc. - Ohio

Rick Jackson - Sales Manager

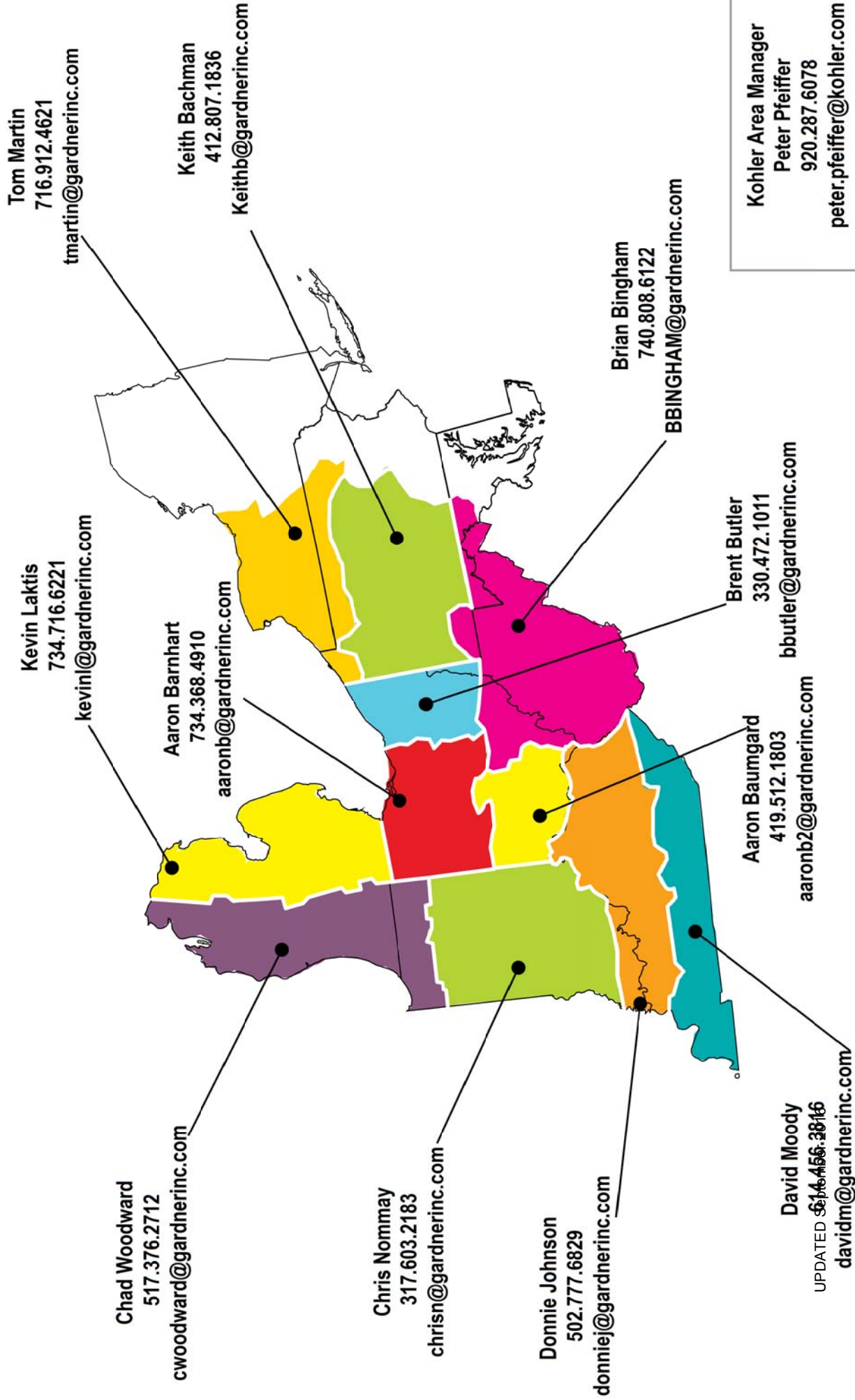
412.584.8682

rickj@gardnerinc.com

Lacy Wright - Technical

614.456.3542

lacyw@gardnerinc.com



Kohler Area Manager
Peter Pfeiffer
920.287.6078
peter.pfeiffer@kohler.com

UPDATED 6/16/16

Gardner-Connell

John Joensen - Sales Manager

800.999.8968

johnj@gardner-connell.com

John Garforth - Technical

800.444.1556 ext.242

johnng@gardner-connell.com

Dave Hartle
518.527.2225
daveh@gardner-connell.com

Gary Muelhauer
607.725.5114
garym@gardner-connell.com

Bob Pelletier
207.754.0753
bobbp@gardner-connell.com

Patrick Murray
774.219.6577
patrickm@gardner-connell.com

Bill Parker
336.918.1268
billp@gardner-connell.com

Bill Hazeldine
508.838.9898
billh@gardner-connell.com

Raphael Andujar
401.749.5098
raphaela@gardner-connell.com

Kurt Frede
908.399.5116
kurtff@gardner-connell.com

Chad Woodring
610.297.5026
chadw@gardner-connell.com

Scott Pysher
610.905.2070
scottpp@gardner-connell.com

Kohler Area Manager
Peter Pfeiffer
920.287.6078
peter.pfeiffer@kohler.com

RBI Corporation

Brooking Chenault - Sales Manager 804.513.4383
bchenault@rbicorp.com

Cathy Yount - Sales Manager 336.422.2842
cyount@rbicorp.com

Art Marek - Technical 800.550.2210 X133
amarek@rbicorp.com

Andy Wirth
410.652.9797
awirth@rbicorp.com

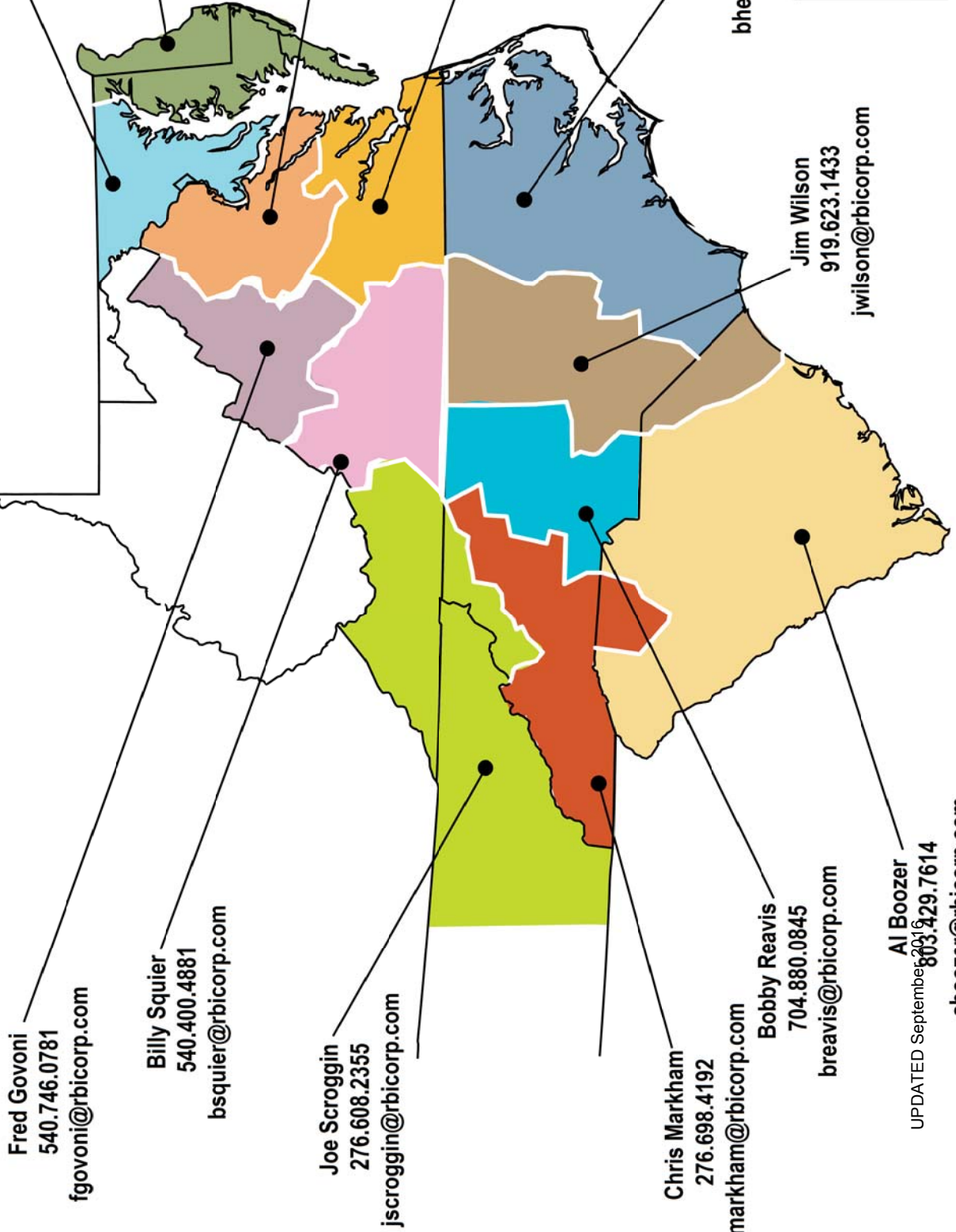
Steve Scott
410.251.8556
sscott@rbicorp.com

Don Butler
703.434.2994
dbutler@rbicorp.com

Matt Moore
804.350.0314
mmoore@rbicorp.com

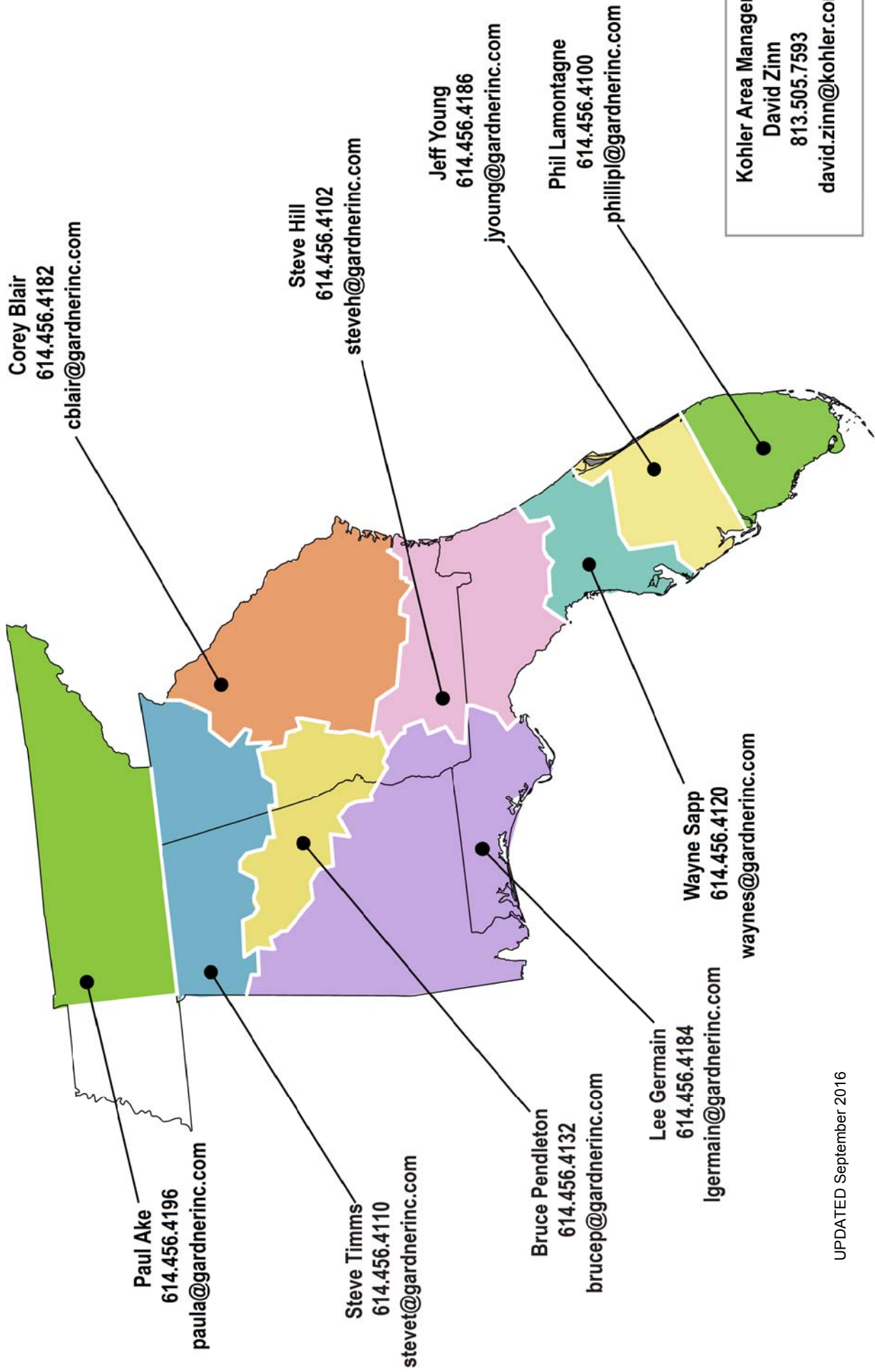
Brian Hecker
252.341.5247
bhecker@rbicorp.com

Kohler Area Manager
David Zinn
813.505.7593
david.zinn@kohler.com



Gardner of Florida, Inc.

David Roundtree - Sales Manager 800.749.3834 ext. 4114 davidr@gardnerinc.com
David Roundtree - Technical 800.749.3834 ext. 4114 davidr@gardnerinc.com



Kohler Area Manager
David Zinn
813.505.7593
david.zinn@kohler.com

Yetman's Ltd. and Lotus Equipment Sales, Ltd.

Brent Michaleski - Sales Manager

800.665.8623 ext. 231

brentm@yetmans.mb.ca

Billy Eslick - Technical

403.862.1326

billye@lotus-equip.com

Mike Irving

800.661.0002

mikei@lotus-equip.com

Billy Eslick

403.862.1326

billye@lotus-equip.com

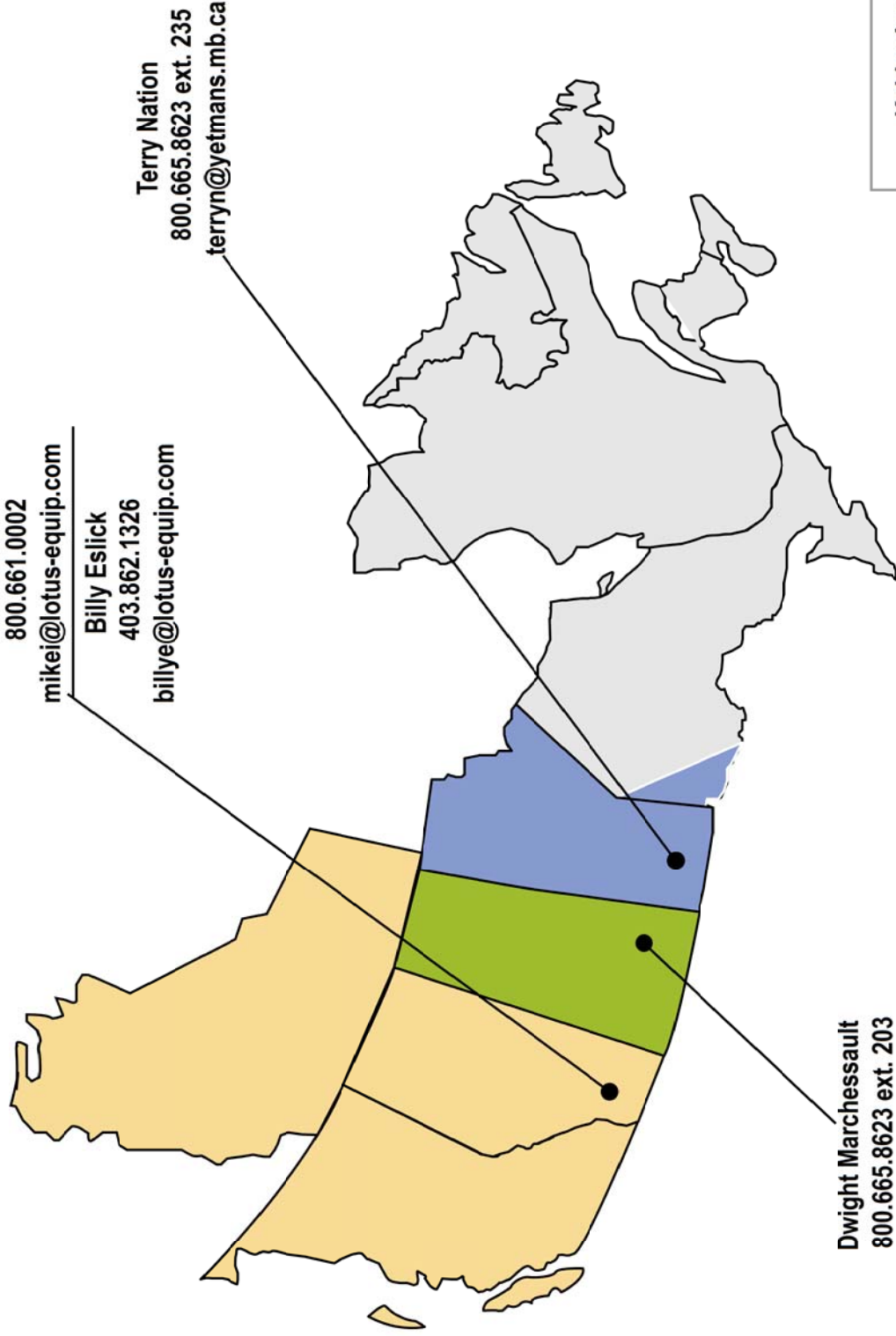
Terry Nation

800.665.8623 ext. 235

terryn@yetmans.mb.ca

Dwight Marchessault
800.665.8623 ext. 203
dwrightm@yetmans.mb.ca

Kohler Area Manager
Shawn Bozarth
920.917.8194
shawn.bozarth@kohler.com



Magneto Sales

Steve Cazalet - Sales Manager

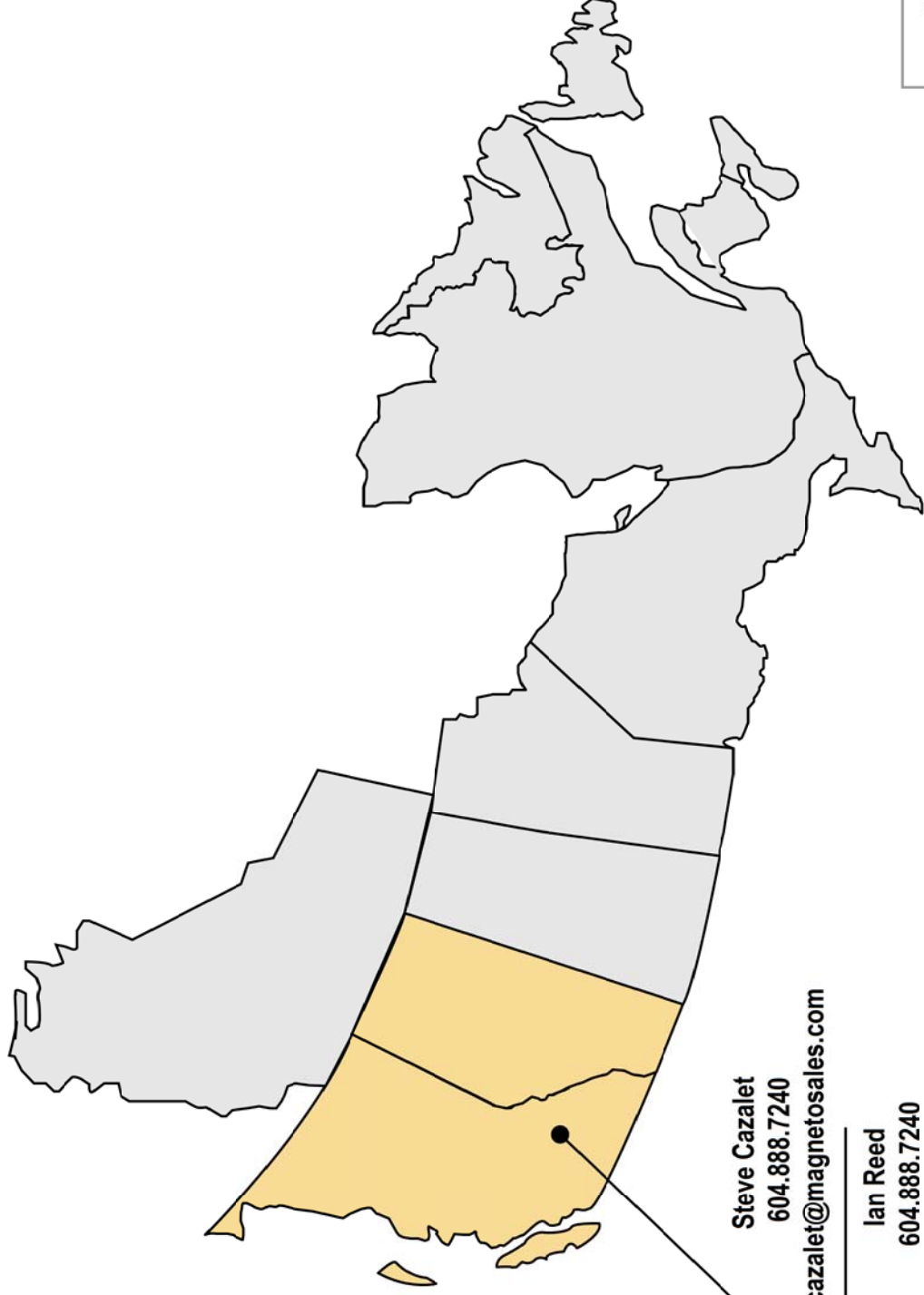
604.888.7240

scazalet@magnetosales.com

Mark Howlett - Technical

604.888.7240

mhowlett@magnetosales.com



Steve Cazalet
604.888.7240
scazalet@magnetosales.com

Ian Reed
604.888.7240
ireed@magnetosales.com

Kohler Area Manager
Shawn Bozarth
920.917.8194
shawn.bozarth@kohler.com