



# Technical Service Bulletin

---

## 30 Clutch plate diagnosis guidelines

30 17 22 2019850/7 May 10, 2017. Supersedes Technical Service Bulletin Group 30 number 16-21 dated July 21, 2016 for reasons listed below.

Model(s)	Year	VIN Range	Vehicle-Specific Equipment
All	2009 - 2017	All	With manual transmission

## Condition

REVISION HISTORY		
Revision	Date	Purpose
7	-	Revised header data (MY 2017 added )
6	07/21/2016	Revised header data (Corrected Elsa display issue )
5	07/01/2015	Revised header data (Added model years 2015 and 2016)

- Clutch is not operating properly.
- Clutch has a burnt smell.
- Clutch pedal does not fully return to starting position.

## Technical Background

The following conditions can lead to clutch damage, such as overheating of the clutch plate and removal of the lining:

- Incorrect shifting.
- At a high vehicle speed, the clutch is pressed and an incorrect lower gear is selected. The gearbox drives the clutch plate past its designed RPM range (overspeed condition) and centrifugal force damages the clutch.
- If the clutch was engaged during this incorrect gear engagement, damage would also occur to the engine.
- The revolutions of clutch plate and engine input shaft differ too much.
- Excessive slipping of the clutch.



# Technical Service Bulletin

---

## Production Solution

Not applicable.

## Service

If any of the damage described below is present, it is due to outside influence and is not covered under warranty.

- Lining partly removed due to overheating (Figure 1).



*Figure 1. Lining partly removed due to overheating.*

- The lining burst off because of an overspeed condition (Figure 2).



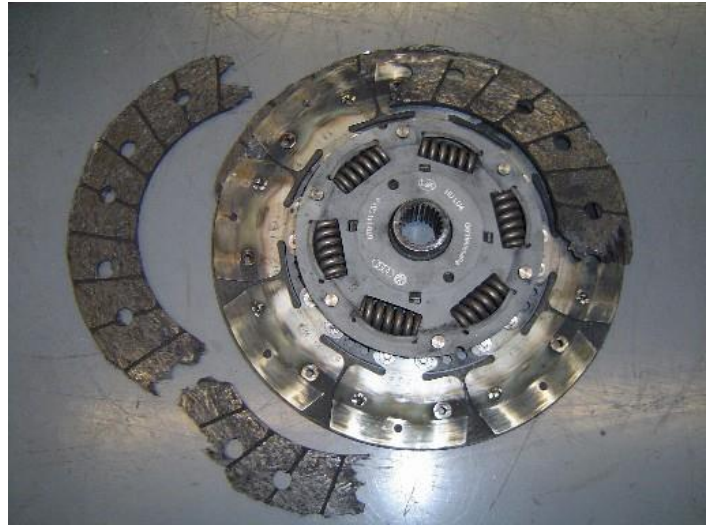
*Figure 2. Burst lining from an overspeed condition.*



# Technical Service Bulletin

---

- The lining is ground to the rivets, which causes a broken clutch lining (Figure 3).



*Figure 3. Broken clutch lining.*

## Warranty

All clutch damage shown in this TSB is due to outside influence and is not covered by any Audi Warranty.

## Additional Information

All parts and service references provided in this TSB (2019850) are subject to change and/or removal. Always check with your Parts Department and service manuals for the latest information.

©2017 Audi of America, Inc. All rights reserved. Information contained in this document is based on the latest information available at the time of printing and is subject to the copyright and other intellectual property rights of Audi of America, Inc., its affiliated companies and its licensors. All rights are reserved to make changes at any time without notice. No part of this document may be reproduced, stored in a retrieval system, or transmitted in any form or by any means, electronic, mechanical, photocopying, recording, or otherwise, nor may these materials be modified or reposted to other sites without the prior expressed written permission of the publisher.