



Technical Service Bulletin

20 MIL on (DTC P310B - Low fuel pressure regulation/pressure out of specification)

20 17 96 2043758/8 August 18, 2017. Supersedes Technical Service Bulletin Group 20 number 17-92 dated July 19, 2017 for reasons listed below.

Model(s)	Year	VIN Range	Vehicle-Specific Equipment
A4	2012 - 2016	All	2.0L and 3.0L engine
A6, A7	2012 - 2018	All	2.0L and 3.0L engine
A5, A5 Cabriolet, and Q5	2012 - 2017	All	2.0L and 3.0L engine

Condition

REVISION HISTORY		
Revision	Date	Purpose
8	-	Revised <i>Service</i> (Updated procedure) Revised <i>Required Parts and Tools</i> (Added fuel delivery unit)
7	07/19/2017	Revised <i>Service</i> (Updated procedure) Revised <i>Warranty</i> (Updated time for checking fuel pressure/delivery rate)
6	06/19/2017	Revised <i>Service</i> (Added note)

- MIL on.
- Customer has problems starting the car.
- The issue usually occurs when the temperature outside is around 105°F or higher, after start-stop journeys with longer idle speed phases and a hot engine.

Technical Background

Vapors in fuel system.

Production Solution

Not applicable.



Technical Service Bulletin

Service

If one of the following DTCs are stored in the engine control module (ECM), J623 (address word 0001):

- **DTC P310B** (Low fuel pressure control, fuel pressure outside tolerance)

Symptom code 6183 for 3.0 TFSI.

Symptom code 2636 and/or 2637 for 2.0 TFSI.

- **DTC P125B00** (Steam bubble formation in fuel low-pressure circuit)

Symptom code 16903



Note:

Intake air temperature is usually above 140°F (60°C) in the freeze frame data of the diagnostic log.

Proceed as follows:

1. Check the low fuel pressure, the fuel delivery rate and the fuel lines according to ELSA specifications. If there are deviations, replace the fuel delivery unit and install the kit in the new fuel delivery unit according to instructions below.

If there are no deviations, install the kit according to instructions below in the current fuel delivery unit.

2. Remove the fuel delivery unit according to the Repair Manual, *Workshop Manual >> Engine >> Fuel Supply Gasoline Engines >> 20 Fuel Supply >> Fuel Delivery Unit >> Fuel Delivery Unit Removing and Installing.*



Warning:

Danger due to escaping fuel. To prevent large quantities of fuel from leaking from the fuel delivery unit when removing, the fuel tank may only be a maximum of ¼ full

3. Install the kit in the fuel delivery module.



Technical Service Bulletin

The repair kit for fuel delivery module has the following parts:

- Control Valve “A.” (Figure 1)
- Control Valve “B” (Figure 2)
- Hose (Figure 3)



Figure 1. Control Valve “A.”



Figure 2. Control Valve “B.”



Technical Service Bulletin

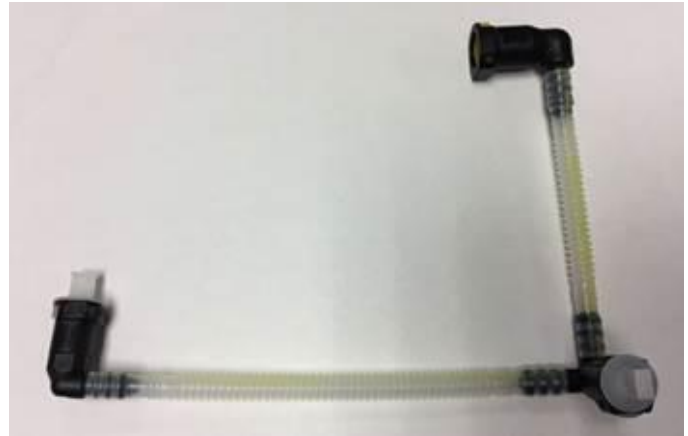


Figure 3. Hose.



Note:

There are 3 different designs for Control Valve Type B.

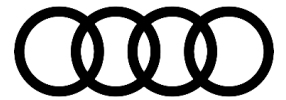
- Type B1: Part has to be modified at the dealership (cut the red area described in the picture). Make sure there is no plastic debris inside or outside the valve.
- Type B2: no modification has to be performed, ready for installation.
- Type B3: no modification has to be performed, ready for installation.

Type: B1

Cut the area marked in red.



Figure 11. Cut the area marked in red.



Technical Service Bulletin

Type: B2

No modifications are necessary.



Figure 12. Do not modify.

Type: B3

No modifications are necessary.



Figure 13. Do not modify.

Follow the next steps to install the kit in the fuel delivery module:



Technical Service Bulletin

3.1 With the fuel delivery unit outside the vehicle, disconnect the main supply line (Figure 4).



Figure 4. Disconnect the main supply line.

3.2 Install the hose supplied in the kit according to the picture below:



Figure 5. Install the hose.

3.3 Install Control Valve “B” in the marked area. Push it until a ‘click’ noise is heard (Figure 6).



Figure 6. Install Control Valve “B”.



Technical Service Bulletin

3.4 Control Valve “B” installation position (Figure 7).

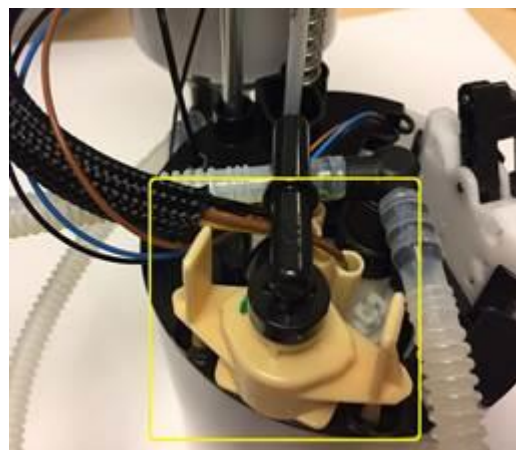


Figure 7. Correct position for Control Valve “B”.

3.5 Install Control Valve “A” as shown in the picture (Figure 8).



Figure 8. Install Control Valve “A”.

3.6 Connect the remaining line to the Control Valve “B” (Figure 9).

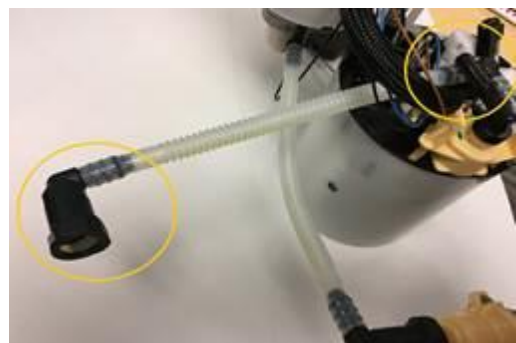
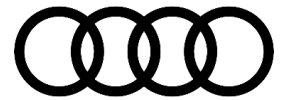


Figure 9. Connect remaining line.



Technical Service Bulletin

3.7 Final installation position for Control Valve “B” (Figure 10).

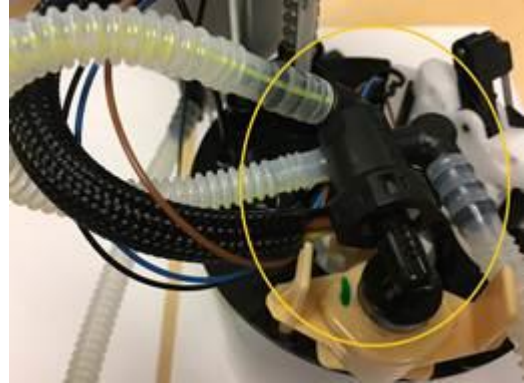


Figure 10. Final position for Control Valve “B.”

4. Install the fuel delivery module in the vehicle according to Elsa at Repair Manual, *Workshop Manual >> Engine >> Fuel Supply Gasoline Engines >> 20 Fuel Supply >> Fuel Delivery Unit >> Fuel Delivery Unit Removing and Installing.*
5. Start the vehicle.
6. Check for leaks.
7. Clear all DTC`s.
8. Test drive the vehicle.

As a reference, find below videos with installation procedure for each type of vehicle.



Note:

Q5 repair: Use the video from A4 and A5 as reference for installation, also refer to the pictures provided in the procedure.



Technical Service Bulletin

Before attempting the repair for the A6 and A7, please review the video of the repair procedure: <https://audi-external.kzoplatform.com:443/swf/player/340> (Figure 13).

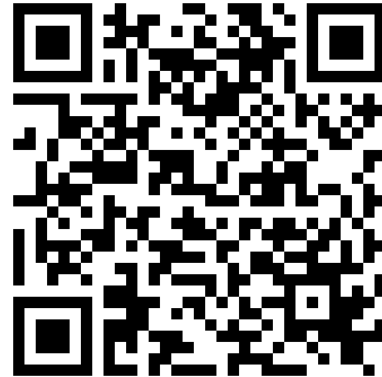


Figure 13. QR code for supporting video.

Before attempting the repair for the A4 and A5, please review the video of the repair procedure: <https://audi-external.kzoplatform.com:443/swf/player/339> (Figure 14).



Figure 14. QR code for supporting video.



Note:

The procedure described above can be performed only with the DTC and symptom codes described previously. If DTC P310B is present with a different symptom code, proceed with normal diagnosis.



Technical Service Bulletin

Warranty

Claim Type:	<ul style="list-style-type: none"> • 110 up to 48 Months/50,000 Miles. • G10 for CPO Covered Vehicles – Verify Owner. • If vehicle is outside any warranty, this Technical Service Bulletin is informational only. 		
Service Number:	2066		
Damage Code:	0040		
Labor Operations:	For A4, A5, A5 Cab, and Q5:		
	Electric fuel pump remove + reinstall	2066 1900	130 TU
	For A6 and A7:		
	Electric fuel pump remove + reinstall	2066 1950	20 TU
	Fuel drain + fill	2003 1700	110 TU
	For all models:		
	Check low fuel pressure and fuel delivery rate	2003 9999	100 TU
	Install repair kit for fuel delivery module	2066 9999	30 TU
Diagnostic Time:	GFF	0150 0000	Time stated on diagnostic protocol (Max 30 TU)
	Road test before service procedure	No allowance	0 TU
	Road test after service procedure	0121 0004	10 TU
	Technical diagnosis at dealer's discretion (Refer to Section 2.2.1.2 and Audi Warranty Online for DADP allowance details)		
Claim Comment:	As per TSB #2043758/8		

All warranty claims submitted for payment must be in accordance with the *Audi Warranty Policies and Procedures Manual*. Claims are subject to review or audit by Audi Warranty.



Technical Service Bulletin

Required Parts and Tools

Part Number	Part Description	Quantity
See ETKA	Seal	01
See ETKA	CAP (If necessary)	01
See ETKA	Fuel Delivery Unit (If necessary)	01
8K0298112G	Repair kit for fuel delivery module	01

Additional Information

All parts and service references provided in this TSB (2043758) are subject to change and/or removal. Always check with your Parts Department and service manuals for the latest information.

©2017 Audi of America, Inc. All rights reserved. Information contained in this document is based on the latest information available at the time of printing and is subject to the copyright and other intellectual property rights of Audi of America, Inc., its affiliated companies and its licensors. All rights are reserved to make changes at any time without notice. No part of this document may be reproduced, stored in a retrieval system, or transmitted in any form or by any means, electronic, mechanical, photocopying, recording, or otherwise, nor may these materials be modified or reposted to other sites without the prior expressed written permission of the publisher.