



## Technical Tip

<b>Topic</b>	64-14-04TT – Front Window Contacts Rear Window Glass, Window Misaligned
<b>Market area</b>	United States 444 Volkswagen of America, Inc. (6444)
<b>Brand</b>	Volkswagen
<b>Date</b>	July 7, 2017

## Condition

<b>ATTENTION:</b>
<b>THIS IS A TECH TIP, NOT A TECHNICAL BULLETIN.</b>
<b>TECH TIPS ARE NOT ASSOCIATED WITH WARRANTY CLAIMING.</b>

### Front Window Contacts Rear Window Glass, Window Misaligned

Model(s)	Year	Eng. Code	Trans. Code	VIN Range From	VIN Range To
Beetle, Beetle Convertible	2012-2015	All	All	AT_CM600001	AT_FM634051

## Technical Background



**Note:**

DO NOT replace any components for this concern.

Complaints of the front window glass contacting the rear glass may be caused by the front window glass becoming loose in the regulator clamps. (See Figs. 1 and 2)



Figure 1

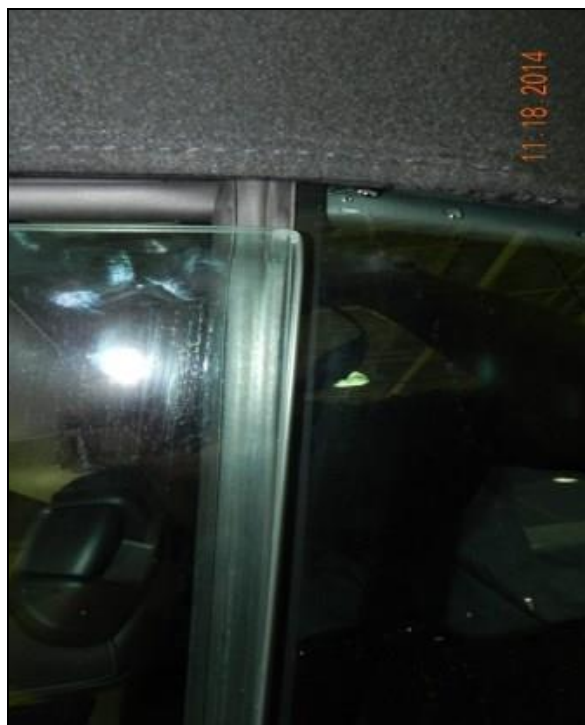


Figure 2

This occurs due to insufficient torque on the fixation bolt for the glass clamp on the regulator elevator. The glass can slip in the clamp and lose its alignment to the rear side window, causing contact between the front door window and the rear window glass. (See Fig. 3)

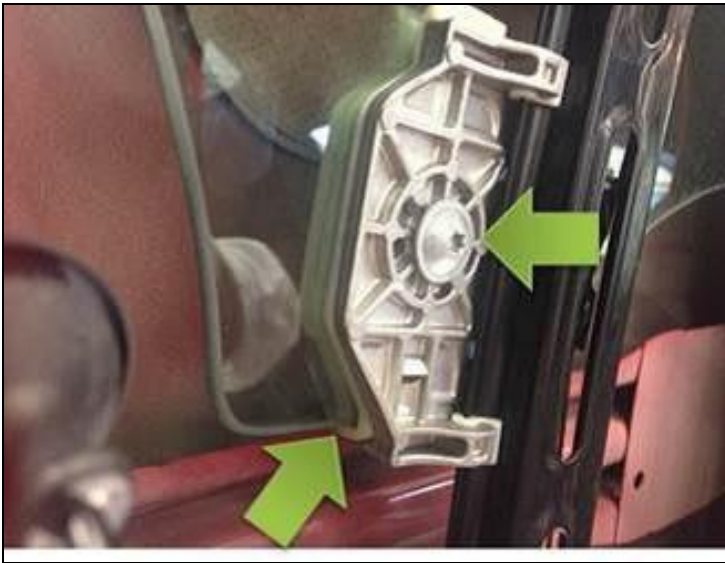


Figure 3

## Service

### To repair:

- Remove the front door trim panel to gain access to the window regulator; see Repair Manual Group 70, Interior Trim in Elsa.
- Remove the Door Inner Cover; see Repair Manual Group 57, Front Doors, and Central Locking System in Elsa.
- Raise or lower the window so the rear glass clamp is accessible.
- Remove the bolt for the regulator clamp then remove the plastic clamp from the elevator and window glass by releasing the clip toward the bottom of the clamp then sliding the clamp up. (See Figs. 4 and 5)



Figure 4



Figure 5

- Apply a few drops of Loctite brand 242 medium strength thread locking compound (blue) to the threaded insert in the plastic regulator clamp. (See Fig. 5)



Figure 5



**Note:**

Thread locking compound should not be solely applied to the clamp bolt as the effectiveness may be reduced. Apply directly to the threads on the back of the regulator clamp.

- Reinstall the plastic clamp on the regulator in the reverse order of removal and reinstall the clamp bolt.
- Adjust the front door window accordingly; see Repair Manual Group 64 Glass, Window Regulators in Elsa.
- Once the window glass is properly adjusted, torque both the front and rear regulator clamp bolts to **7 Nm** using torque wrench 1783 (VAG1783). (See Fig. 6)



Figure 6

- Check for proper function of the window with the door open and closed before reassembling.
- Install all pieces in reverse order of removal.



## Additional Information

<b>Revision History</b>		
<b>Revision Number</b>	<b>Released Date</b>	<b>Reason For Update</b>
2039140/4	7/7/17	Update to latest standard.
2039140/1	11/28/14	Original publication.

© 2017 Volkswagen Group of America, Inc. All rights reserved. Information contained in this document is based on the latest information available at the time of printing and is subject to the copyright and other intellectual property rights of Volkswagen Group of America, Inc., its affiliated companies and its licensors. All rights are reserved to make changes at any time without notice. No part of this document may be reproduced, stored in a retrieval system, or transmitted in any form or by any means, electronic, mechanical, photocopying, recording, or otherwise, nor may these materials be modified or reposted to other sites, without the prior expressed written permission of the publisher.