



INSTRUCTION TO SERVICE

ITS: 6703	
SECTION:	260 Battery Compartment
WRITTEN BY:	A. Mark
SUBJECT:	Update equalizer programming

ITS6703

THIS ITS DOCUMENT SHOULD BE RETAINED AND REFERED TO FOR FUTURE MAINTENANCE UNTIL THE NEW FLYER PARTS AND/OR SERVICE MANUAL IS UPDATED TO REFLECT WORK DONE AS A RESULT OF THIS DOCUMENT. ENSURE THAT THIS DOCUMENT IS AVAILABLE FOR PARTS AND MAINTENANCE STAFF GOING FORWARD.

THIS DOCUMENT AND THE CONTENTS DISCUSSED HEREIN ARE THE CONFIDENTIAL AND PROPRIETARY INFORMATION OF NEW FLYER INDUSTRIES CANADA ULC AND NEW FLYER OF AMERICA INC. AND ARE DISCLOSED BY NEW FLYER IN CONFIDENCE. THIS DOCUMENT AND THE CONTENTS HEREIN ARE NOT TO BE DISCLOSED BY THE INTENDED RECIPIENT WITHOUT THE PRIOR WRITTEN AUTHORIZATION OF NEW FLYER. ANY UNAUTHOIZED DISCLOSURE, REPRODUCTION OR OTHER DISTRIBUTION OF THIS DOCUMENT OR INFORMATION IS STRICTLY PROHIBITED AND MAY RESULT IN ACTION BEING TAKEN AGAINST THE PARTY MAKING THE UNAUTHORIZED DISCLOSURE. THIS DOCUMENT AND ALL COPIES HEREOF MUST BE RETURNED TO NEW FLYER UPON REQUEST.

NOTE: To perform the following work, it is required to have the Vanner CAN Interface software. A registration code is needed to enable the function modules. Please contact Vanner to get your registration if required.

PROCEDURE:

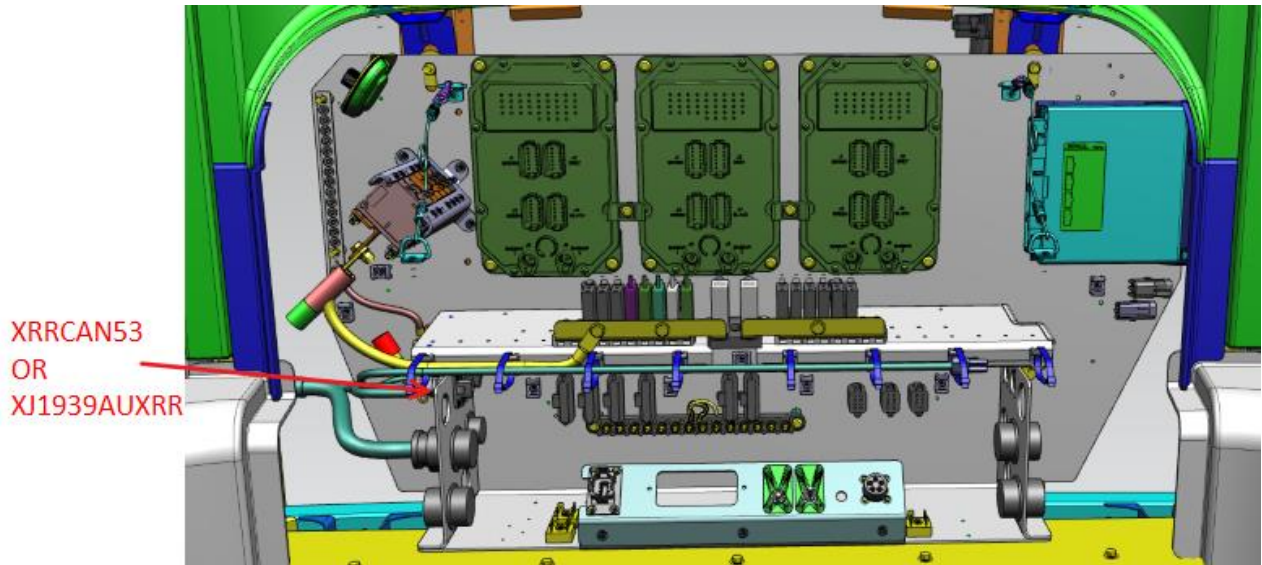


Figure 1: Rear panel

1. Gain access to the rear panel by using a square key to unlatch the access door. Refer to Figure 1.
2. Locate the appropriate three cavity CAN line connector at the rear panel and disconnect it. The connector will be connecting the RH Options harness to the rear panel harnessing. Refer to Table 1 and Figure 1.
 - a. Connect the T connector to the RH Options harness. Refer to Figure 2.
 - b. Connect the EOL resistor to the T connector.
 - c. Connect the CANcase XL or Peak CAN/USB adapter to the T connector using a DE-9 to CAN harness. Refer to Figure 3.
 - d. Connect the CANcase XL or Peak CAN/USB adapter to your PC

SR	Connector
SR2067	XJ1939AUXRR
SR2099	XJ1939AUXRR
SR2100	XJ1939AUXRR
SR2101	XRRCAN53
SR2102	XRRCAN53

Table 1: Connector assignments

3. Start the Vanner CAN Interface software.
4. Click on the 70/80 Equalizer icon to start the Equalizer Dashboard. Refer to Figure 4.
5. Check the heartbeat to ensure that CAN communication is ready between PC and equalizer. Refer to Figure 5.
6. Start the CAN bootloader by clicking the icon on the Vanner CAN interface page.

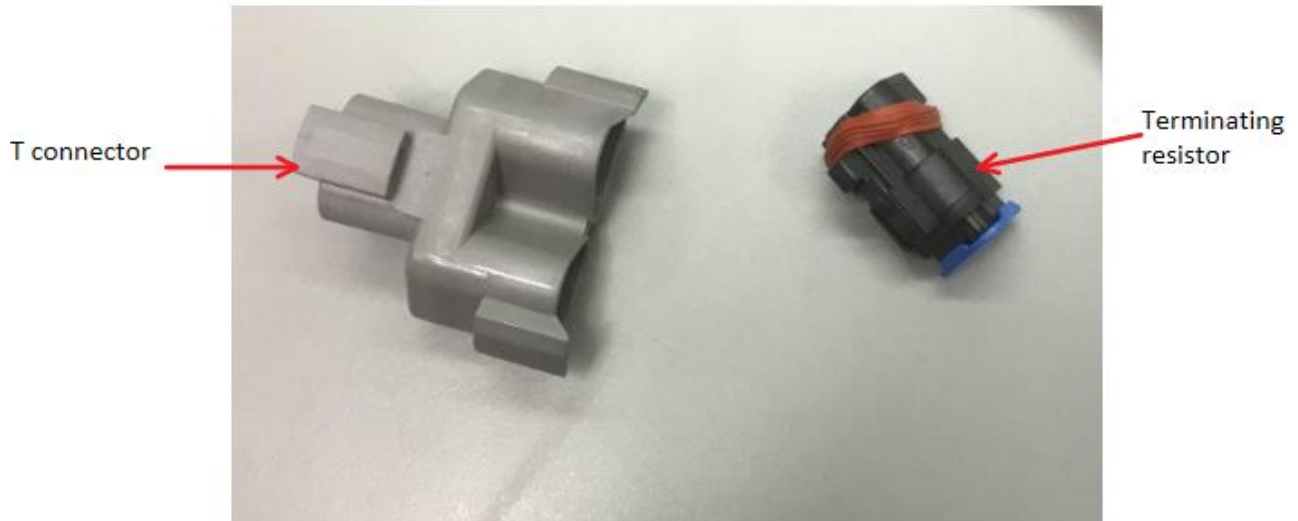


Figure 2: T connector; terminating resistor



Figure 3: CANcase XL; Peak CAN/USB adapter; DE-9 to CAN harness



Figure 4: Vanner CAN interface

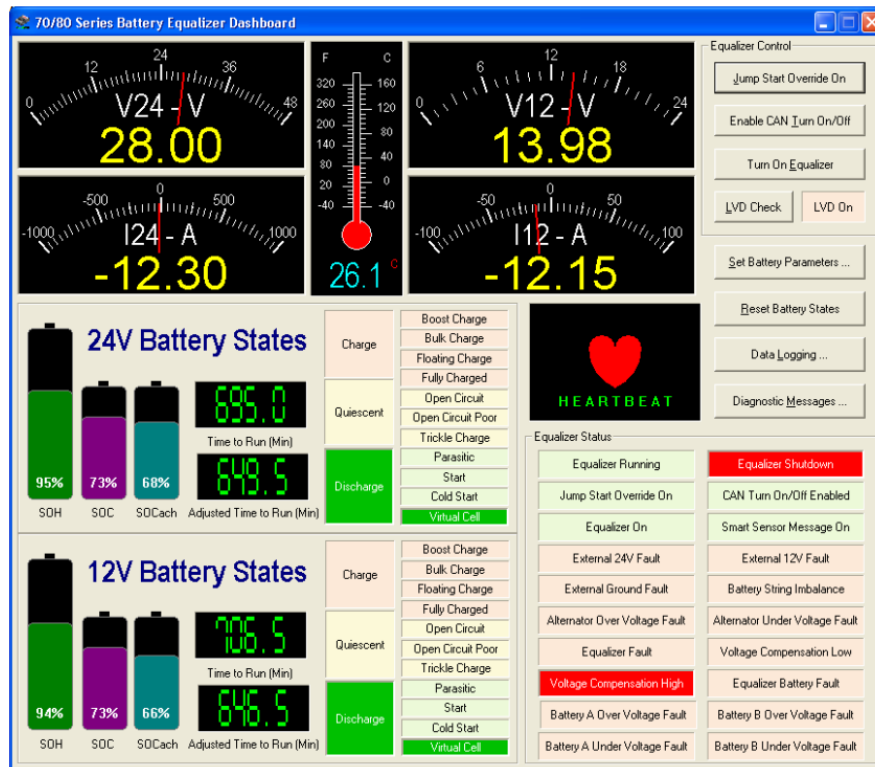


Figure 5: Equalizer dashboard

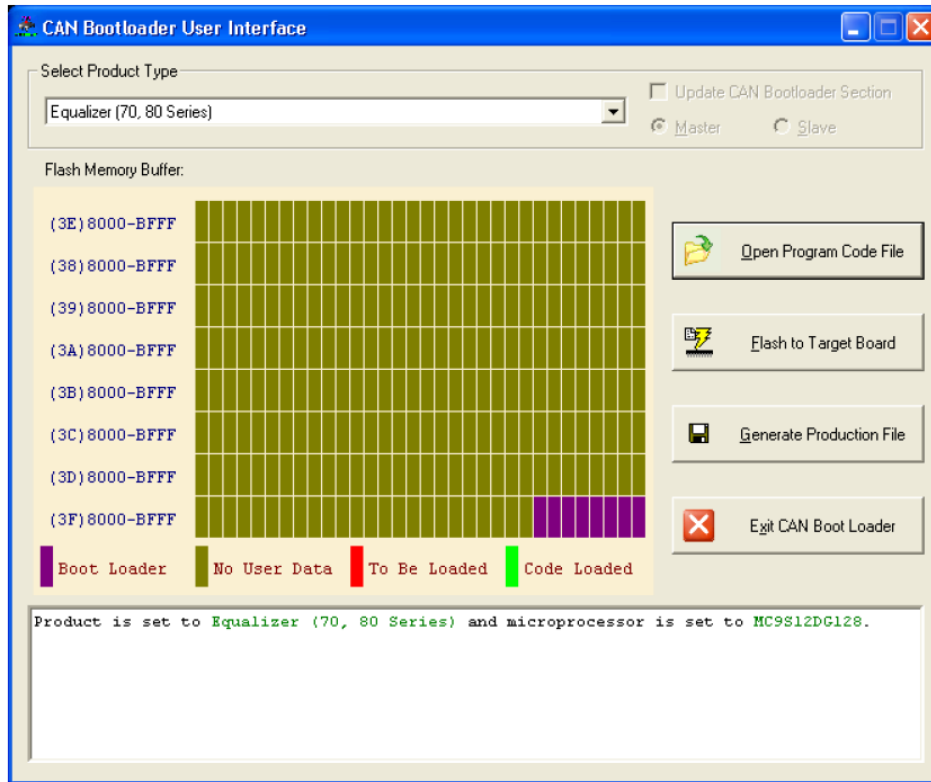


Figure 6: CAN Bootloader User Interface

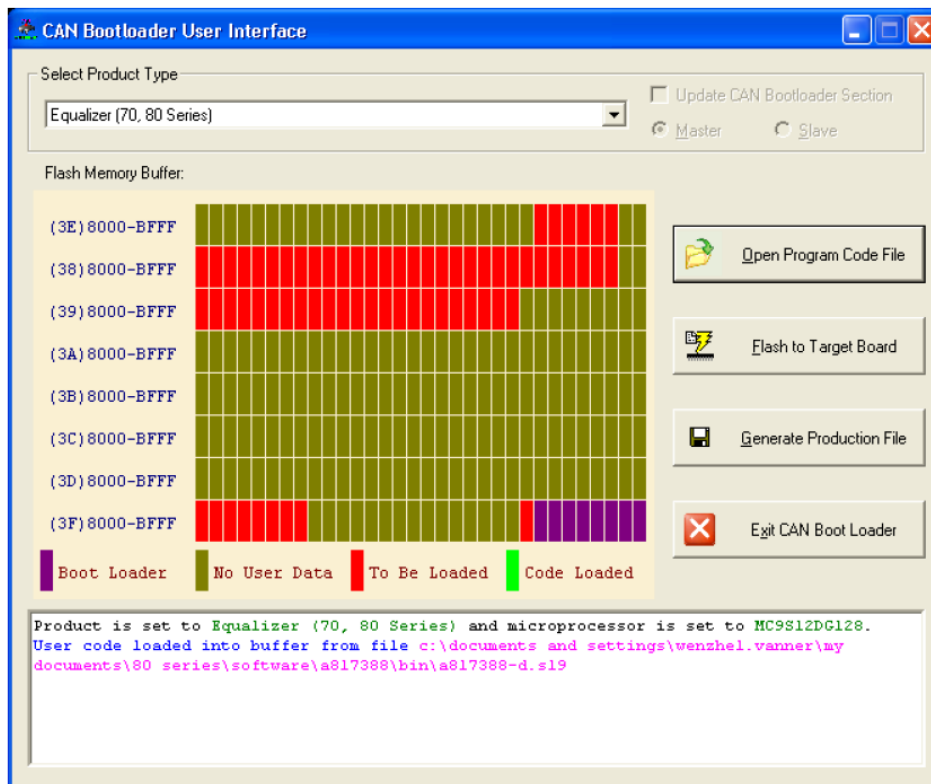


Figure 7: CAN Bootloader User Interface with Code File loaded

7. In “Select Product Type” drop box, make sure “Equalizer (70, 80 Series)” is selected.
8. Click “Open Program Code File” button, browse to the new firmware code file and open it. The code will be read from the file and shown in “Flash Memory Buffer” as red blocks. Refer to Figure 7.
9. Click “Flash to Target Board” button to start flashing new firmware to equalizer. Blocks flashed successfully will change from red to green. Refer to Figure 8.

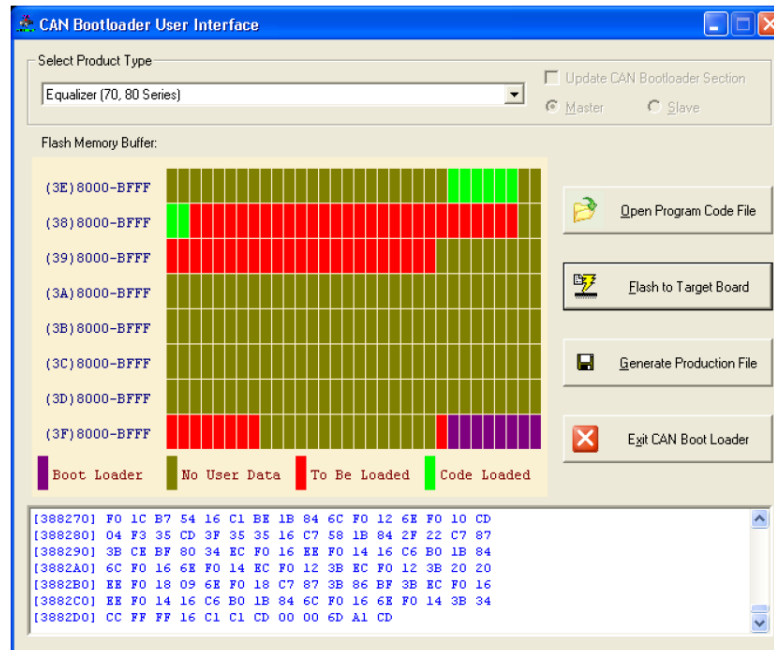


Figure 8: CAN Bootloader User Interface – Flashing in progress

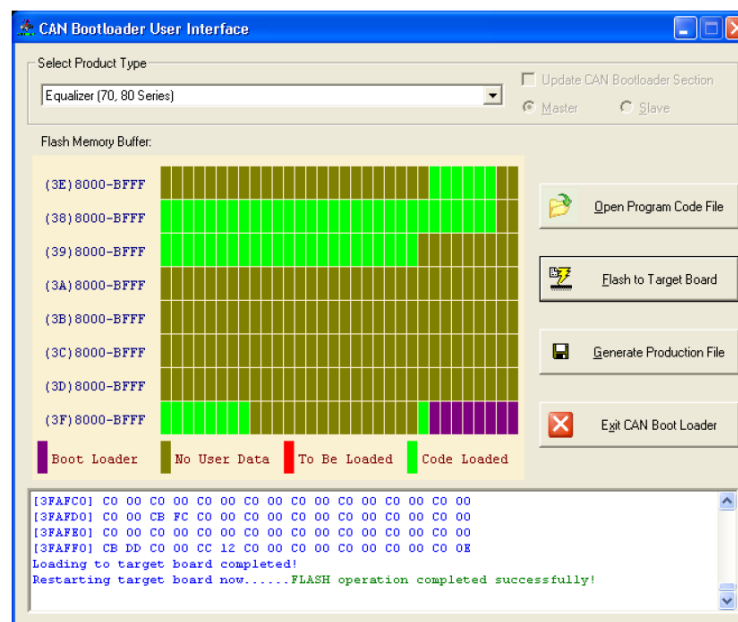


Figure 9: CAN Bootloader User Interface – Flashing operation completed successfully

10. Wait until all red blocks turn into green and a successful message is displayed at bottom. Refer to Figure 9.

11. Close CAN bootloader and switch to Equalizer Dashboard to verify heartbeat. Click “Diagnostic Messages ...” button on Equalizer Dashboard to bring up the Diagnostic window (Figure 8). Click “Request Software ID” button to verify correct software ID (1EQ8048* as of today).
12. Reconnect the RH Options harness to the rear panel.
13. Remove all tools and debris and return the bus to service condition.

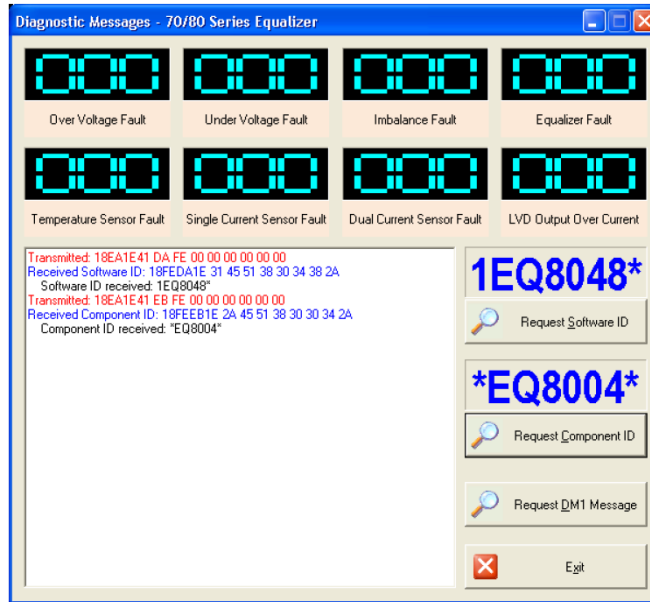


Figure 9: Diagnostic Messages Window – With Software ID Requested

LABOUR ESTIMATE				
	Operation	Men	Hours	Labour Time M X HR
1	Update equalizer program	1.0	0.5	0.5

SPECIAL TOOLS REQUIRED					
Item	Part Number	Description	Qty. per Coach	Units	Notes
1		CANcase XL or Peak CAN/USB adapter	1.0	EA	
2		EOL resistor	1.0	EA	
3		T connector	1.0	EA	