

MODEL: Karma Revero**DATE:** November 2017**TITLE:** Catalytic Converter and Center Muffler Joint Inspection**First Release****PRIORITY:** On Complaint**APPLICABILITY:** MY17 and MY18 Revero**MARKET REGION:** North America**PURPOSE:** Correction for MIL on condition P1200

Inspect the joint between catalytic converter and center muffler to ensure catalytic converter studs and center muffler flange are not bent (fig 1).

The vehicle may exhibit excessively loud exhaust noise.
The MIL may be illuminated for the diagnostic trouble codes:

- P1200 - Overly Active DFCO

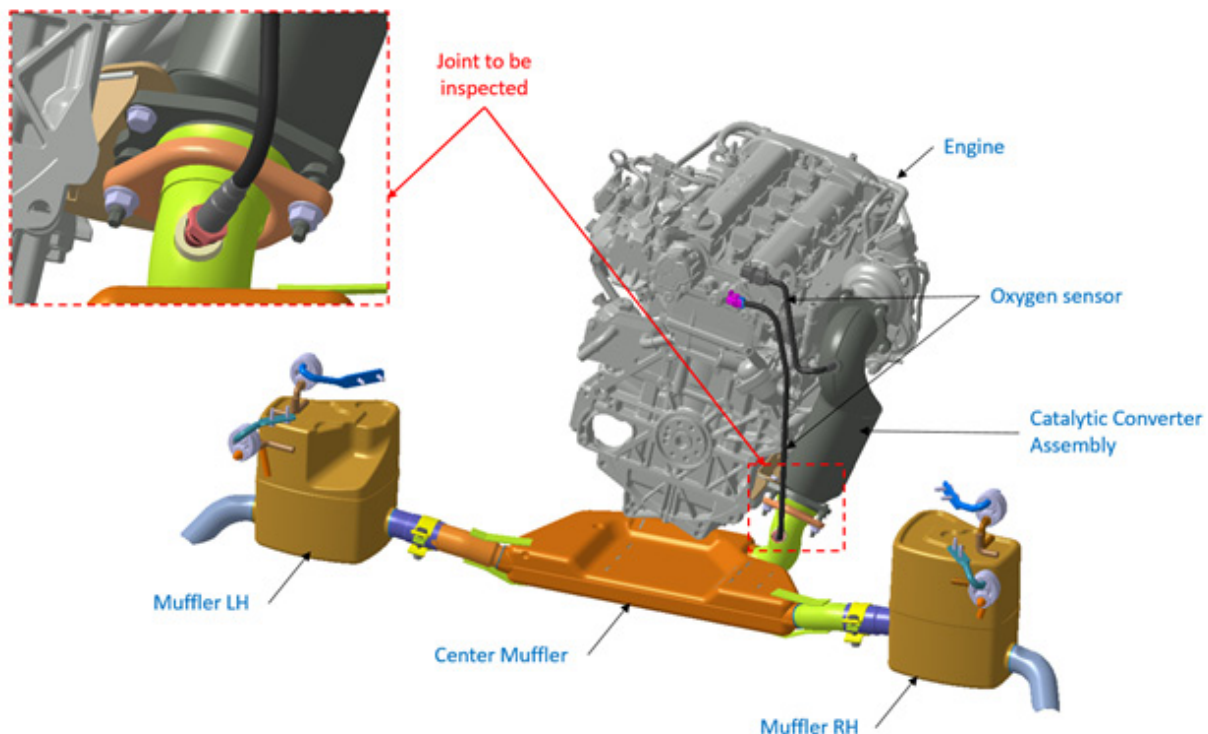


fig 1
System Overview

Karma Automotive Bulletins and service documents are intended for use by experienced and trained Technicians. If you lack the skills, tools, equipment and a suitable workshop for any procedure described in this document, we suggest you leave such repairs to a Karma retailer and service provider. See your service provider for advice on whether your vehicle may benefit from the information contained within this document. The information contained in the Karma Bulletin is accurate at the date of publication. However, Karma Automotive regularly updates technical information. Please check with your Karma Automotive Retailer and Karma Automotive service provider that the bulletin you intend to use contains the latest available information.

MODEL: Karma Revero

DATE: November 2017

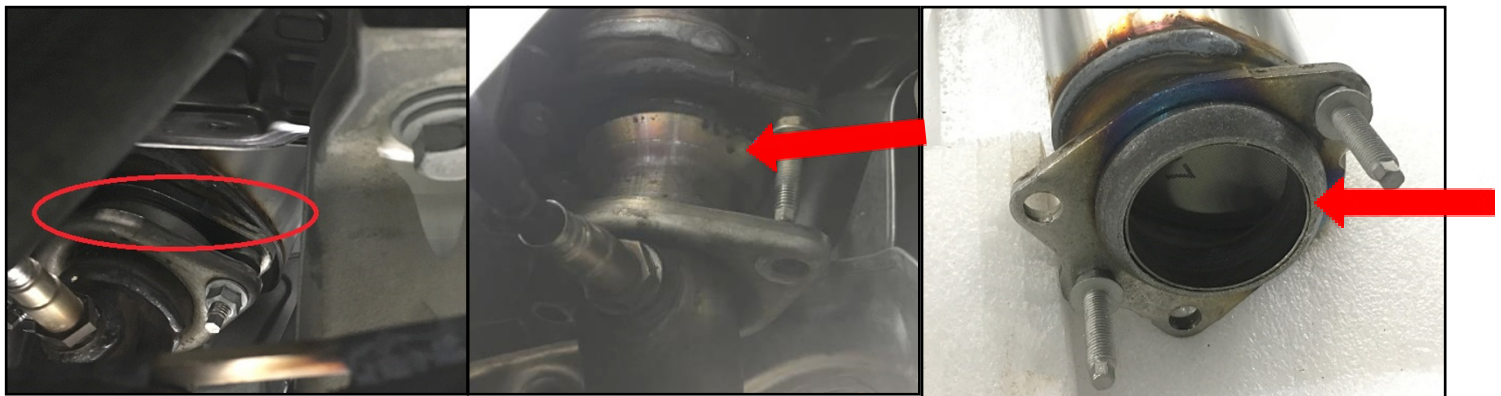
First Release

TITLE: Catalytic Converter and Center Muffler Joint Inspection

1. Lift the vehicle and locate the joint.
2. Make a visual inspection of the condition and compare to the reference images

Make sure you inspect 3 points listed below (fig 2a,2b,2c):

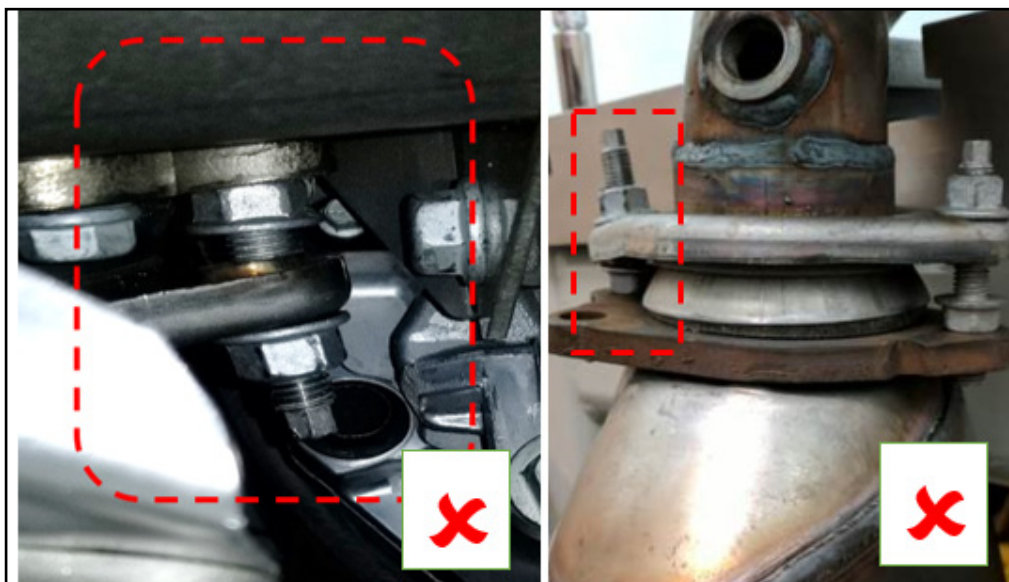
1. Catalytic Converter Gasket is in place
2. Studs are straight (fig 2b)
3. Flange is not bent (fig 2c)



Missing gasket

fig 2a

Gasket in Place



Bent exhaust studs

fig 2b

Karma Automotive Bulletins and service documents are intended for use by experienced and trained Technicians. If you lack the skills, tools, equipment and a suitable workshop for any procedure described in this document, we suggest you leave such repairs to a Karma retailer and service provider. See your service provider for advice on whether your vehicle may benefit from the information contained within this document. The information contained in the Karma Bulletin is accurate at the date of publication. However, Karma Automotive regularly updates technical information. Please check with your Karma Automotive Retailer and Karma Automotive service provider that the bulletin you intend to use contains the latest available information.

MODEL: Karma Revero

DATE: November 2017

TITLE: Catalytic Converter and Center Muffler Joint Inspection

First Release

The exhaust stud and flange show below (fig 3a,3b) are correct.

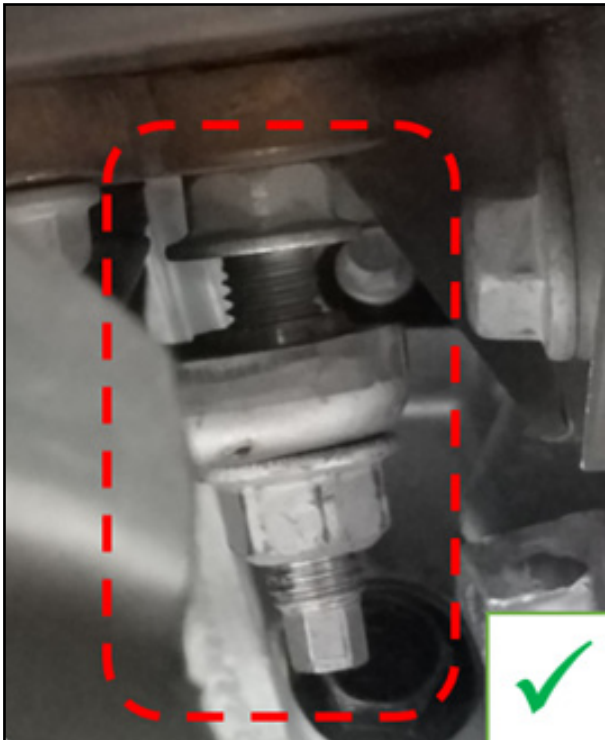


fig 2a

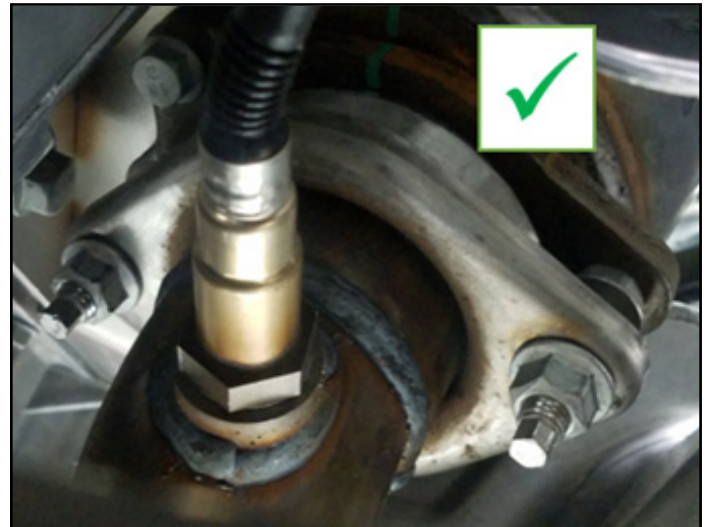


fig 2b

Karma Automotive Bulletins and service documents are intended for use by experienced and trained Technicians. If you lack the skills, tools, equipment and a suitable workshop for any procedure described in this document, we suggest you leave such repairs to a Karma retailer and service provider. See your service provider for advice on whether your vehicle may benefit from the information contained within this document. The information contained in the Karma Bulletin is accurate at the date of publication. However, Karma Automotive regularly updates technical information. Please check with your Karma Automotive Retailer and Karma Automotive service provider that the bulletin you intend to use contains the latest available information.

MODEL: Karma Revero**DATE: November 2017****First Release****TITLE: Catalytic Converter and Center Muffler Joint Inspection**

If the studs are bent replace the following:

- Studs
- Catalytic converter Gasket
- Nuts

If the flange on the center muffler is bent:

- Studs
- Catalytic converter Gasket
- Center Muffler
- Nuts

Follow the removal procedure in the service manual.

The Reassembly special care must be taken must be followed as described.

Note: For installation, torque Nuts evenly, otherwise the condition will remain.

Install Nuts right before the thread starts are visible. (fig 3a)

From this position “walk” the parts together. (fig 3b, 3c)

Alternate sides increasing torque 1Nm by side until specified torque is reached, target is 17 Nm \pm 2 Nm.



fig 3a

Karma Automotive Bulletins and service documents are intended for use by experienced and trained Technicians. If you lack the skills, tools, equipment and a suitable workshop for any procedure described in this document, we suggest you leave such repairs to a Karma retailer and service provider. See your service provider for advice on whether your vehicle may benefit from the information contained within this document. The information contained in the Karma Bulletin is accurate at the date of publication. However, Karma Automotive regularly updates technical information. Please check with your Karma Automotive Retailer and Karma Automotive service provider that the bulletin you intend to use contains the latest available information.

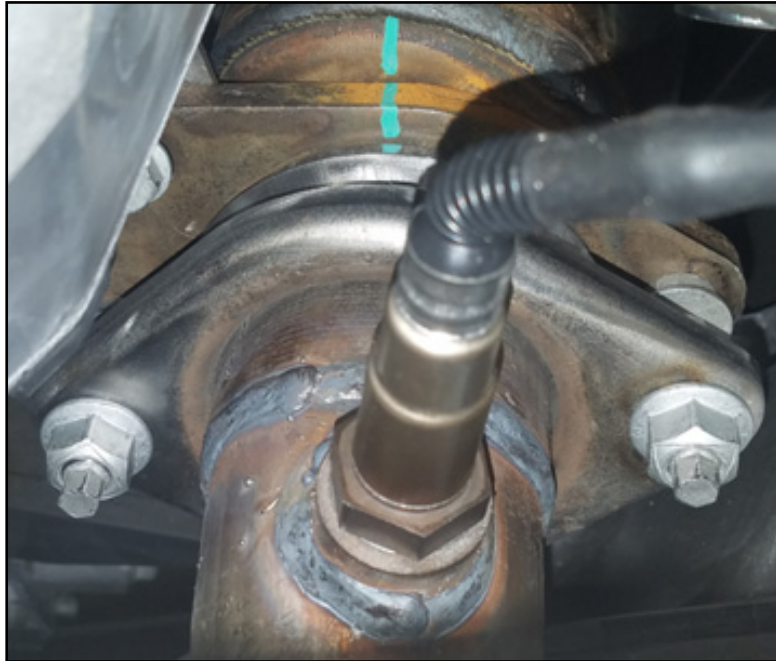
MODEL: Karma Revero**DATE: November 2017****First Release****TITLE: Catalytic Converter and Center Muffler Joint Inspection**

fig 3b



fig 3c

Karma Automotive Bulletins and service documents are intended for use by experienced and trained Technicians. If you lack the skills, tools, equipment and a suitable workshop for any procedure described in this document, we suggest you leave such repairs to a Karma retailer and service provider. See your service provider for advice on whether your vehicle may benefit from the information contained within this document. The information contained in the Karma Bulletin is accurate at the date of publication. However, Karma Automotive regularly updates technical information. Please check with your Karma Automotive Retailer and Karma Automotive service provider that the bulletin you intend to use contains the latest available information.

MODEL: Karma Revero**DATE: November 2017****First Release****TITLE: Catalytic Converter and Center Muffler Joint Inspection**

Assembly completed, passenger side nut torque is 17 Nm.

Driver side nut torque is 19 Nm (upper limit) to compensate potential loss in torque because of extension use. (fig 4a, 4b)



fig 4a



fig 4b

Karma Automotive Bulletins and service documents are intended for use by experienced and trained Technicians. If you lack the skills, tools, equipment and a suitable workshop for any procedure described in this document, we suggest you leave such repairs to a Karma retailer and service provider. See your service provider for advice on whether your vehicle may benefit from the information contained within this document. The information contained in the Karma Bulletin is accurate at the date of publication. However, Karma Automotive regularly updates technical information. Please check with your Karma Automotive Retailer and Karma Automotive service provider that the bulletin you intend to use contains the latest available information.



Technical Service Bulletin

TB-17-12-37

MODEL: Karma Revero

DATE: November 2017

First Release

TITLE: Catalytic Converter and Center Muffler Joint Inspection

PARTS REQUIRED:

PART NUMBER	DESCRIPTION	QUANTITY
C141403907200	STUD - EXHAUST MANIFOLD	2
C144202007200	NUT-HEX FL PTM 2 PC10 M10x1.5x15	2
C131115804001	Seal – Exhaust Pipe (Catalytic Converter Gasket)	1
C131115911005	Muffler-Center	1

SHOP SUPPLIES:

DESCRIPTION
N/A

SPECIAL TOOLS:

DESCRIPTION
N/A

CAUSAL PART:

PART NUMBER	DESCRIPTION

LABOR CODES:

CODE	DESCRIPTION	TIME	DEFECT CODE
12-80-05-05	Catalytic Converter and Center Muffler Joint Inspection	1.6	12-80-05-15

SUBLET:

CODE	DESCRIPTION	AMOUNT
N/A		

WARRANTY DISPOSITION: This repair is covered under the New Vehicle Limited Warranty, in effect for five (5) years from the in-service date with no mileage limitation.

Karma Automotive Bulletins and service documents are intended for use by experienced and trained Technicians. If you lack the skills, tools, equipment and a suitable workshop for any procedure described in this document, we suggest you leave such repairs to a Karma retailer and service provider. See your service provider for advice on whether your vehicle may benefit from the information contained within this document. The information contained in the Karma Bulletin is accurate at the date of publication. However, Karma Automotive regularly updates technical information. Please check with your Karma Automotive Retailer and Karma Automotive service provider that the bulletin you intend to use contains the latest available information.