	GROUP ENG	MODEL 2018MY Sorento (UMa) 2.4L
	NUMBER 177C	DATE November 2017
TECHNICAL SERVICE BULLETIN		
SUBJECT: SERVICE ACTION: 2.4L ENGINE START LOGIC IMPROVEMENT (SA316C)		

This bulletin provides the procedure to improve the logic of the Engine Control Unit (ECU) on some 2018MY Sorento (UMa) 2.4L vehicles, produced from September 18, 2017 through November 16, 2017, which may experience a very slight surging sensation with the cruise control activated. To correct this concern, apply the improved logic to the ECU using the KDS ECU Upgrade function as described in this bulletin. For confirmation that the latest reflash has been applied to a vehicle you are working on, verify the ROM ID using the table on page 2 of this bulletin. Kia is requesting the completion of this Service Action on all affected vehicles. Before conducting the procedure, verify that the vehicle is included in the list of affected VINs.



Kia Diagnostic System (KDS)

*** NOTICE**

A Service Action is a repair program without customer notification that is performed during the warranty period. Any dealer requesting to perform this repair outside the warranty period will require DPSM approval.

Repair status for a VIN is provided on WebDCS (Service → Warranty Coverage → Warranty Coverage Inquiry → Campaign Information). Not completed Recall / Service Action reports are available on WebDCS (Consumer Affairs → Not Completed Recall → Recall VIN → Select Report), which includes a list of affected vehicles.

This issue number is SA316C.

File Under: <Engine>

- Circulate To:** General Manager Service Manager Parts Manager
 Service Advisors Technicians Body Shop Manager Fleet Repair

SUBJECT:

SERVICE ACTION: 2.4L SHIFT QUALITY & WAKE-UP LOGIC IMPROVEMENT (SA316C)

ECU Upgrade Procedure:

To correct this condition, the ECU should be reprogrammed using the KDS download, as described in this bulletin.

Upgrade Event Name

359.UMA 2.4L ECM ENGINE START LOGIC IMPROVEMENT

* NOTICE


- A fully charged battery is necessary before ECU upgrade can take place. It is recommended that the Midtronics GR8-1299 system be used in ECU mode during charging. **DO NOT** connect any other battery charger to the vehicle during ECU upgrade.
- All ECU upgrades must be done with the ignition key in the 'ON' position.
- Be careful not to disconnect the VCI-II connected to the vehicle during the ECU upgrade procedure.
- **DO NOT** start the engine during ECU upgrade.
- **DO NOT** turn the ignition key 'OFF' or interrupt the power supply during ECU upgrade.
- When the ECU upgrade is completed, turn the ignition 'OFF' and wait 10 seconds before starting the engine.
- **ONLY** use approved ECU upgrade software designated for the correct model, year.

* NOTICE

Before attempting an ECU upgrade on any Kia model, make sure to first determine whether the particular model is equipped with an immobilizer security system. Failure to follow proper procedures may cause the PCM to become inoperative after the upgrade and any claims associated with this repair may be subject to chargeback.

ROM ID INFORMATION TABLE:

Upgrade Event #359 (UMa ECU)

Model	EM	TM	IMMO	ECU P/No.	ROM ID	
					Previous	New
UMa	2.4L ULEV	AT	Yes (+) 	39100-2GGF8 39100-2GGH8	UMAINC4ERA6A UMAINC4ERA7A UMAINC4ERA7B UMAINC4ERD5A	UMAINC4ERD5B
	2.4L SULEV		No (-)	39100-2GGF3 39100-2GGH3	UMAINC4EMA6A UMAINC4EMA7A UMAINC4EMA7B UMAINC4EMD5A	UMAINC4EMD5B

* NOTICE

Prior to performing the ECU upgrade, be sure to check that the KDS is fully charged.

SUBJECT:

SERVICE ACTION: 2.4L SHIFT QUALITY & WAKE-UP LOGIC IMPROVEMENT (SA316C)

1. Connect the VCI-II to the OBD-II connector, located under the driver's side of the instrument panel.

*** NOTICE**

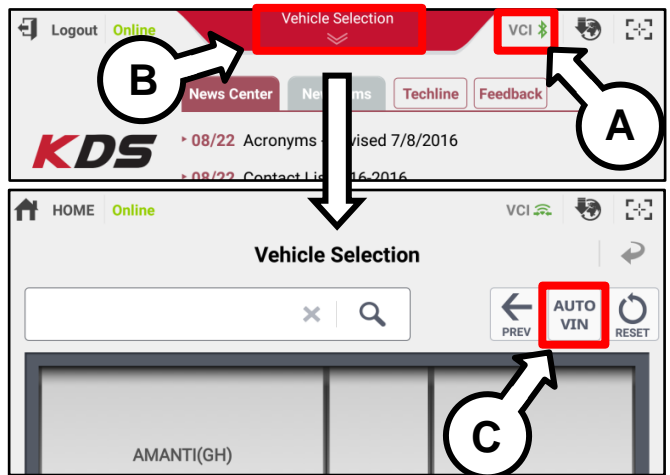
The ECU upgrade function on KDS operates wirelessly. It is not necessary to perform the upgrade via USB cable.



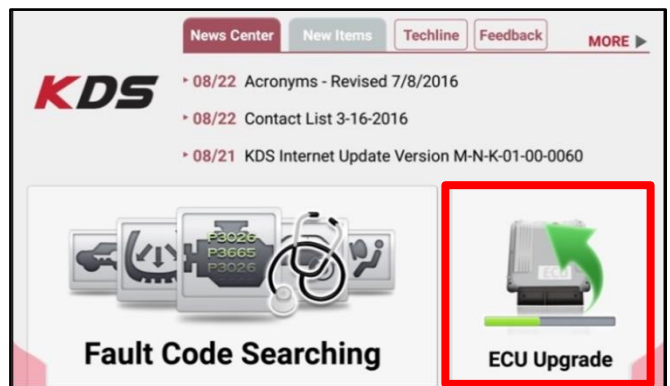
2. With the ignition ON, turn ON the KDS tablet. Select **KDS** from the home screen.



3. Confirm communication with VCI (A) and then configure the vehicle (B) using the **AUTO VIN** (C) feature.



4. Select **ECU Upgrade**.



SUBJECT: SERVICE ACTION: 2.4L SHIFT QUALITY & WAKE-UP LOGIC IMPROVEMENT (SA316C)

- The KDS will check the server for recently uploaded Events and then automatically download **Upgrade Event #359**.

*** NOTICE**
 The vehicle must be identified in Vehicle Selection to download an Event for that vehicle.

After the download is complete, the program will shut down to install. Please wait until the program restarts.

Event	Status
271.QF 2.4GDI DTC P0171,P0420 LOGIC IMPROVEMENT	Downloading
273.TF 2.4GDI DTC P0171,P0420 LOGIC IMPROVEMENT	Ready

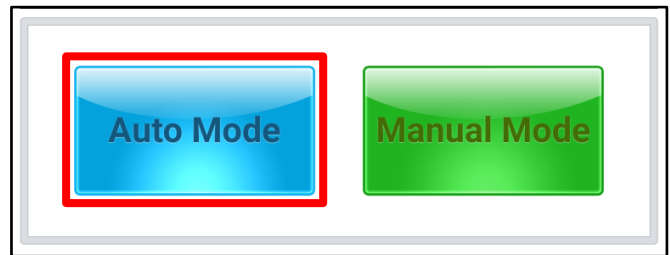
36%

Do not touch any system buttons while performing this function.

KDS screenshot shown above is for demonstration purposes only. Events shown in screenshot are not applicable to this bulletin.

- Select **Auto Mode**.

CAUTION
 Do NOT attempt to perform a Manual Mode upgrade UNLESS Auto Mode fails. Always follow the instructions given on the KDS in either Auto or Manual mode.



- Select the **Engine** system under the System selection menu.

Touch **ID Check** (D) and confirm that the latest update is available.

Select **Upgrade Event #359** and select **Upgrade** to continue.

- The ECU upgrade will begin and the progress of the upgrade will appear on the bar graph. Upgrade part (1/2) (E) will download the upgrade event to the VCI-II. Upgrade part (2/2) (F) will upgrade the ECU.

CAUTION
 Do not touch the system buttons (like 'Back', 'Home', 'etc.') while performing ECU Upgrade.

E

ECU Upgrading...(1/2)
 ECU is in the process of being upgraded. Please wait a few minute.

F

ECU Upgrading...(2/2)
 ECU is in the process of being upgraded. Please wait a few minute.

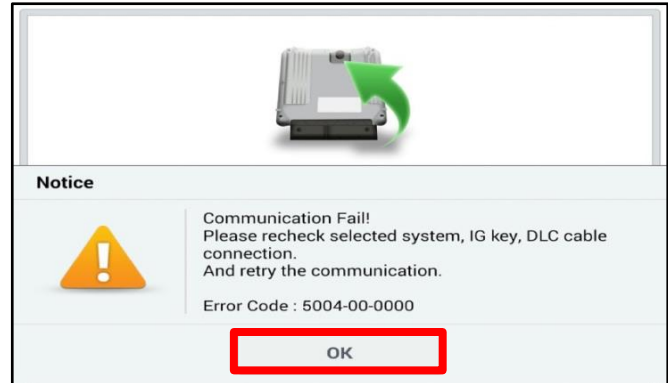
SUBJECT:

SERVICE ACTION: 2.4L SHIFT QUALITY & WAKE-UP LOGIC IMPROVEMENT (SA316C)

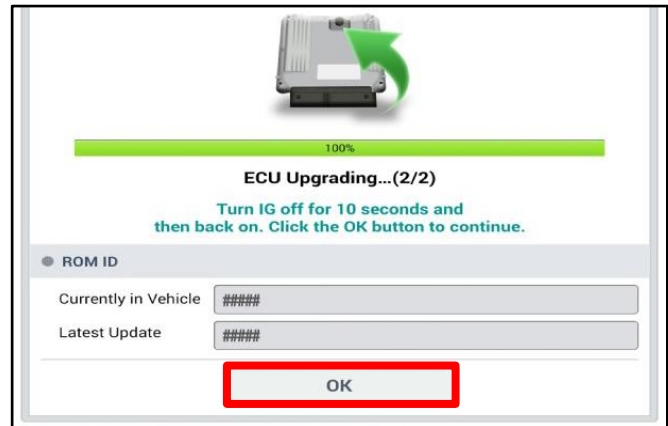
9. If a “Communication Fail” screen appears, verify that the VCI-II and KDS are communicating properly. Touch **OK** and restart the procedure from step 4.

* NOTICE

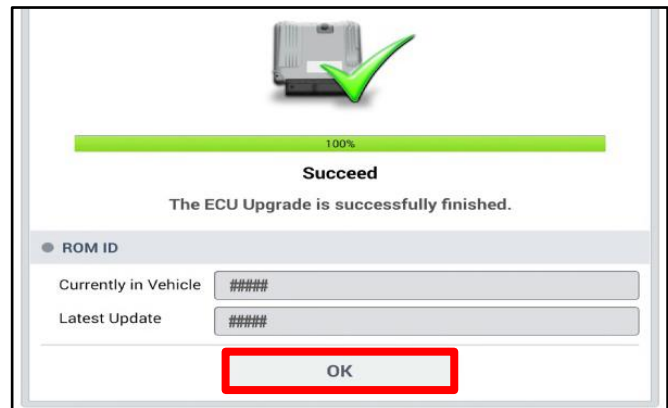
If an error notice continues to appear or if the upgrade cannot be performed, contact Techline or GIT America Help Desk.



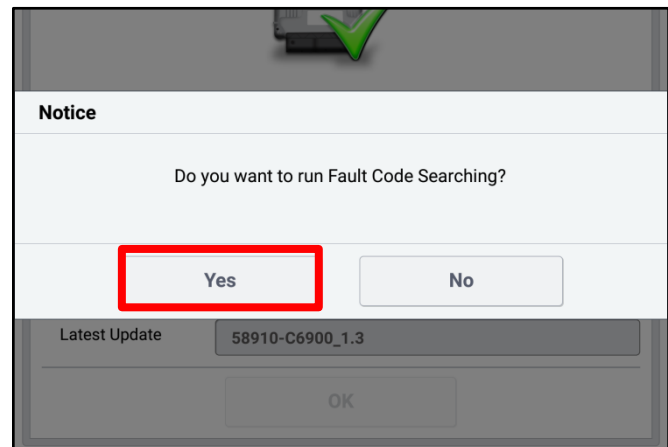
10. When instructed on the KDS, turn the ignition **OFF** for ten (10) seconds then back on. Touch **OK** to continue.



11. Once the upgrade is complete, touch **OK** to finalize the procedure.



12. When prompted, select No for the Diagnostic Trouble Codes (DTC) check, then return to the KDS Home Page.

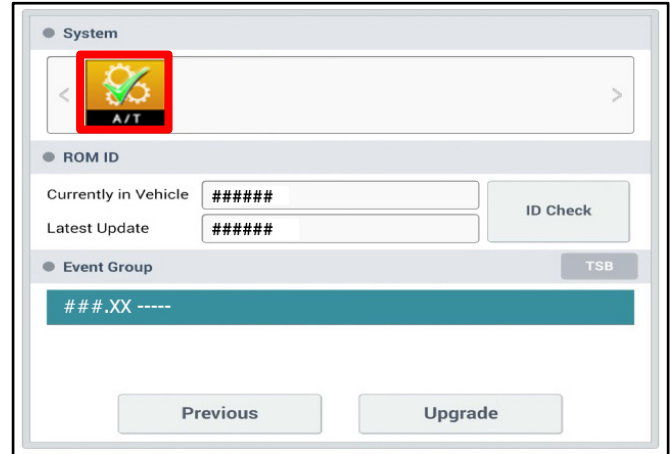


SUBJECT:

SERVICE ACTION: 2.4L SHIFT QUALITY & WAKE-UP
LOGIC IMPROVEMENT (SA316C)

- Repeat steps 4-11 and perform **Upgrade Event #359** with the **A/T** system selected under the System selection menu.

When prompted, select **YES** to check for Diagnostic Trouble Codes (DTC) and erase any DTCs stored such as EPS, ESC, and TPMS that may have been set during the upgrade.



The screenshot shows a software interface for vehicle upgrades. At the top, the 'System' menu is selected, and a gear icon with a checkmark and 'A/T' is highlighted with a red box. Below this, the 'ROM ID' section contains two input fields: 'Currently in Vehicle' and 'Latest Update', both containing '#####'. An 'ID Check' button is located to the right of these fields. The 'Event Group' section features a 'TSB' button and a blue bar with the text '###.XX ----'. At the bottom of the interface are two buttons: 'Previous' and 'Upgrade'.

- Start the engine to confirm proper operation of the vehicle.

SUBJECT:

SERVICE ACTION: 2.4L SHIFT QUALITY & WAKE-UP LOGIC IMPROVEMENT (SA316C)

Manual Upgrade Procedure:


★ NOTICE

The manual upgrade should **ONLY** be performed if the automatic upgrade fails.

If the automatic upgrade fails, turn the ignition **OFF** for about 10 seconds then place it back in the **ON** position to reset the control unit **BEFORE** performing manual upgrade.

See table below for Manual Mode passwords.

Manual Mode ECU Upgrade Passwords

Event	Model	System	Menu	Password
359	UMA	ECU	Uma 2.4GDI ULEV –IMMO : 39100-2GGF3/H3	0233
			Uma 2.4GDI ULEV +IMMO/SMK : 39100-2GGF8/H8 	0827

1. Within the ECU Upgrade screen displayed, select **Manual Mode**.
2. Select the **Engine** system under the System selection menu. Select **Upgrade Event #359** and select **Upgrade** to continue.
3. Select the appropriate control unit part number with reference to the ROM ID Information Table on page 2, and select **OK**.
4. Enter the appropriate password from the Manual Mode password table above and select **OK**.
5. The upgrade will begin and the progress of the upgrade will appear on the bar graph.
6. When instructed on the KDS, turn the ignition **OFF** for ten (10) seconds then back on. Touch **OK** to continue.
7. Once the upgrade is complete, touch **OK** to finalize the procedure.
8. When prompted, select **YES** to check for Diagnostic Trouble Codes (DTC) and erase any DTCs stored such as EPS, ESC, and TPMS that may have been set during the upgrade.
9. Start the engine to confirm proper operation of the vehicle.

SUBJECT:

**SERVICE ACTION: 2.4L SHIFT QUALITY & WAKE-UP
LOGIC IMPROVEMENT (SA316C)**

AFFECTED VEHICLE RANGE:

Model	Production Date Range
Sorento (UMa)	September 18, 2017 through November 16, 2017

WARRANTY INFORMATION:

N Code: N99 C Code: C99

Model	Claim Type	Causal P/N	Qty.	Repair Description	Labor Op Code	Op Time	Replacement P/N	Qty.
UMa 2.4L	V	39108 2GGC2	0	(SA316C) 2.4L ECU Logic Improvement	170A57R0	0.3 M/H	N/A	0

* NOTICE

<p>VIN inquiry data for this repair is provided for tracking purposes only. Kia retailers should reference <u>SA316C</u> when accessing the WebDCS system.</p>
