



# Service Bulletin

File in Section: -

Bulletin No.: 17-NA-222

Date: July, 2017

## TECHNICAL

**Subject:** Turbocharger Whine Noise

| Brand:    | Model:           | Model Year: |      | VIN: |    | Engine: | Transmission: |
|-----------|------------------|-------------|------|------|----|---------|---------------|
|           |                  | from        | to   | from | to |         |               |
| Chevrolet | Colorado Express | 2016        | 2017 |      |    | LWN     | All           |
| GMC       | Canyon Savana    | 2016        | 2017 |      |    | LWN     | All           |

|                                   |   |
|-----------------------------------|---|
| <b>Involved Region or Country</b> | North America and N.A. Export Regions   |
| <b>Additional Options (RPOs)</b>  | Equipped with 2.8L Diesel Engine (RPO LWN)  |
| <b>Condition</b>                  | Some customers may comment on a whine noise during acceleration, in gear, or Neutral. |
| <b>Cause</b>                      | This condition may be caused by a bent turbocharger compressor blade.                 |
| <b>Correction</b>                 | Replace the turbocharger.   |

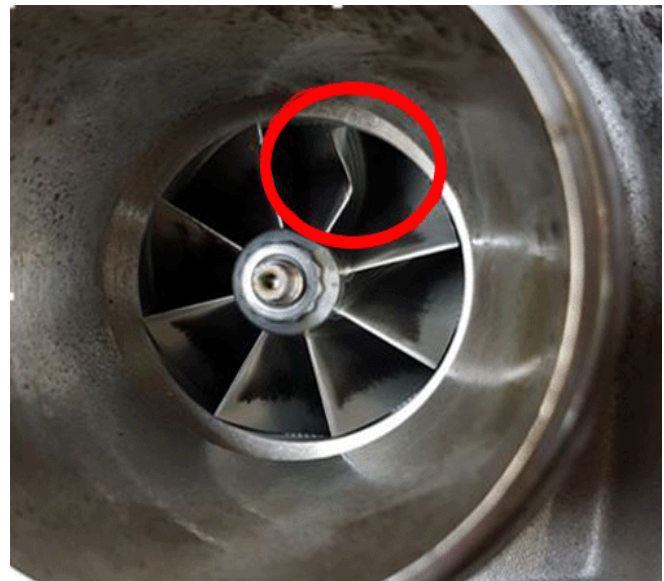
### Parts Information

Use the vehicle identification number (VIN), SI, and the GM Electronic Parts Catalog to determine the proper part to order.

| Description      | Part Number | Qty |
|------------------|-------------|-----|
| TURBOCHARGER ASM | 55486936    | 1   |
| TURBOCHARGER ASM | 55496255    | 1   |

### Warranty Information

| Labor Operation | Description              | Labor Time                         |
|-----------------|--------------------------|------------------------------------|
| 4068290         | Turbocharger Replacement | Use Published Labor Operation Time |



4818843

### Service Procedure

If you encounter a vehicle with the above concern, inspect the turbocharger compressor blades.

If one of the blades is bent as illustrated above, replace the turbocharger. Refer to *Turbocharger Replacement* in SI.

If none of the blades are bent, continue diagnosis referring to SI.

|          |   |
|----------|---|
| Version  | 1 |
| Modified |   |

GM bulletins are intended for use by professional technicians, NOT a "do-it-yourselfer". They are written to inform these technicians of conditions that may occur on some vehicles, or to provide information that could assist in the proper service of a vehicle. Properly trained technicians have the equipment, tools, safety instructions, and know-how to do a job properly and safely. If a condition is described, **DO NOT** assume that the bulletin applies to your vehicle, or that your vehicle will have that condition. See your GM dealer for information on whether your vehicle may benefit from the information.



WE SUPPORT VOLUNTARY  
TECHNICIAN  
CERTIFICATION