




Service Bulletin

File in Section: -
 Bulletin No.: 17-NA-118
 Date: July, 2017

TECHNICAL

Subject: Information on Body Seam Locations as Possible Intrusion Areas for Water Leaks, Musty Odor, Wet Carpet and/or Water Leaking on Driver Side Floor

Brand:	Model:	Model Year:		VIN:		Engine:	Transmission:
		from	to	from	to		
Chevrolet	Trax	2016	2017			All	All

Involved Region or Country	North America
Condition	Some customers may comment on a musty odor, wet carpet and/or water leaking on the driver side floor.
Cause	 <p style="text-align: right;">4771191</p> <p>The cause of the condition may be voids in one or several body seam areas. The tag/wire noted by the arrow in the graphic above is pointing to one of the more common locations at the driver A-pillar.</p>
Correction	Using Kent Automotive High-Tech™ Clear Seam Sealer, or equivalent, reseal the body seam areas referenced in the Service Procedure below.

Parts Information

To obtain the High-Tech™ Clear Seam Sealer, contact Kent Automotive at 1-888-YES-KENT (1-888-937-5368).

Description	Part Number
Kent Automotive High-Tech™ Clear Seam Sealer	P10200 (5 oz)

Warranty Information

For vehicles repaired under warranty, use:

Labor Operation	Description	Labor Time
0560032	Body Joint Resealing	Use Published Labor Operation Time

Service Procedure

Note: Depending on the location of the water leak, you may have to remove certain interior components in order to repair the leak.

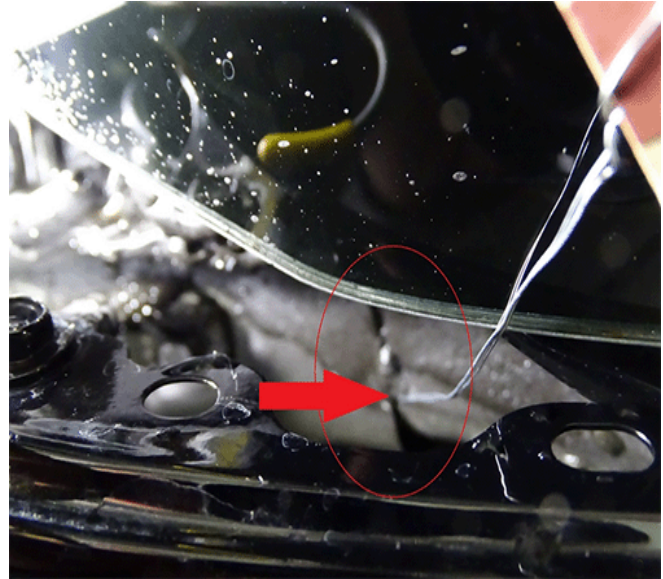
1. If the floor carpet is wet, refer to *Floor Carpet Drying* in SI.
2. Remove the driver side trim/carpet as necessary to visually inspect for the water leak.
3. Confirm the water leak by water testing the driver side air inlet panel, windshield and A-pillar area.



4771194

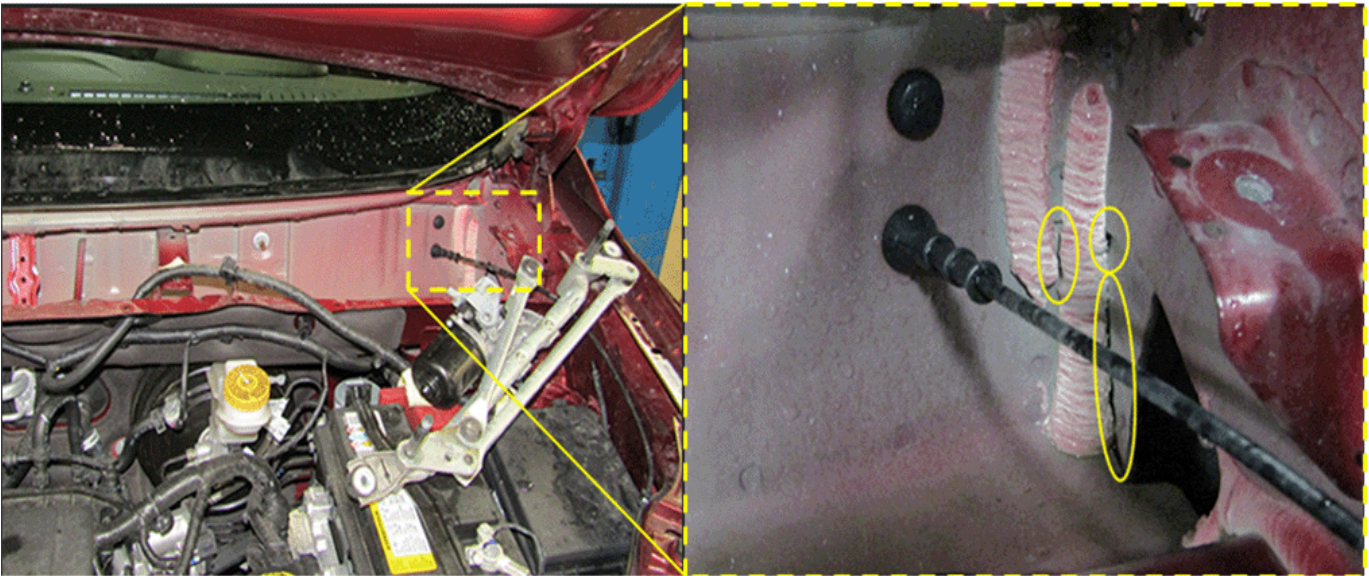
4. If leak is confirmed, remove the wiper transmission (1). Refer to *Windshield Wiper Transmission Replacement* in SI.

5. Inspect three particular areas for possible voids/gaps in the sealing material:



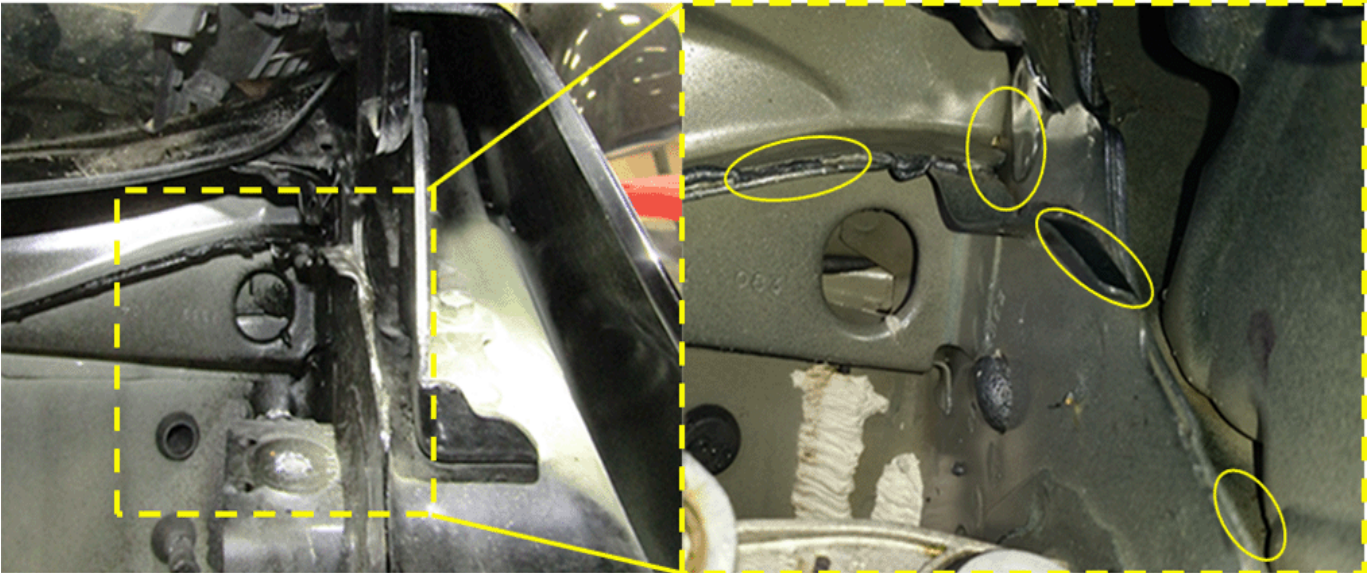
4771197

- Inspect the driver side upper hinge pillar seam (below the windshield edge, behind the hood hinge), again shown by the tag/wire in the graphic above.



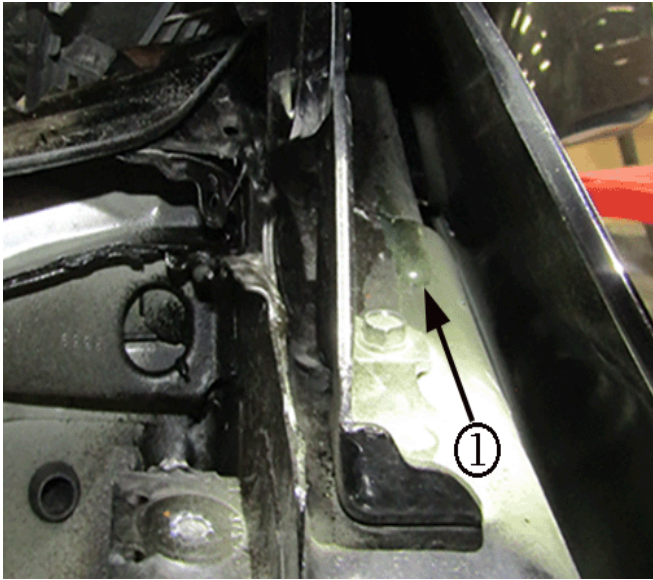
4771199

- Inspect the vertical body seam in the cowl area, shown circled in the graphic above.



4839809

- Also inspect the horizontal seams shown circled in the graphic above.



4771201

6. Seal any voids/gaps in these areas with Kent Automotive High-Tech™ Clear Seam Sealer P/N P10200, or equivalent (1).
7. Repeat water test to ensure leaks have been eliminated.
8. Reinstall the wiper transmission. Refer to *Windshield Wiper Transmission Replacement* in SI.
9. Reinstall any carpet/trim that was removed.

Version	2
Modified	July 18, 2017 – Added the 2016 Model Year and additional graphic in step #5.

