



## Technical Bulletin 04.2017

### Contents

| Item | Subject   | Model Affected  |
|------|---|---|
| .1   | Handlebar End Weight Fixings  | Street Triple S, Street Triple S 660cc, Street Triple S 35 kW A2 Restricted Licence Version, Street Triple R, Street Triple R - LRH (Low Ride Height), Street Triple RS |
| .2   | Coolant Expansion Tank Cover Fixings                                  | Tiger Explorer XR, Tiger Explorer XRX, Tiger Explorer XRX-LRH, Tiger Explorer XRT, Tiger Explorer XC, Tiger Explorer XCX, Tiger Explorer XCX-LRH, Tiger Explorer XCA    |
| .3   | Airbox and Immobiliser Connector Anti-Tamper Foam Pad                 | Speed Triple S, Speed Triple R  |
| .4   | Scheduled Maintenance Chart   | Tiger Explorer XR, Tiger Explorer XRX, Tiger Explorer XRX-LRH, Tiger Explorer XRT, Tiger Explorer XC, Tiger Explorer XCX, Tiger Explorer XCX-LRH, Tiger Explorer XCA    |
| .5   | Rider's Seat Fixing   | Street Triple S, Street Triple S 660cc, Street Triple S 35 kW A2 Restricted Licence Version, Street Triple R, Street Triple R - LRH (Low Ride Height), Street Triple RS |
| .6   | Triumph Diagnostic Tool - End of Support for Microsoft Windows Vista® | N/A   |
| .7   | Temporary Packing Crate   | Speed Triple S, Speed Triple R  |
| .8   | Steering Lock Removal and Installation                                | Bonneville Bobber, Thunderbird Commander, Thunderbird LT  |
| .9   | Exhaust Clamp and Bolt Assembly                                       | Speed Triple S, Speed Triple R  |
| .10  | Service Manual Update - Purge Control Valve and Engine Breather Cover | Street Triple S, Street Triple S 660cc, Street Triple S 35 kW A2 Restricted Licence Version, Street Triple R, Street Triple R - LRH (Low Ride Height), Street Triple RS |
| .11  | Belly Pan Panel Assembly Fixings                                      | Street Triple RS  |

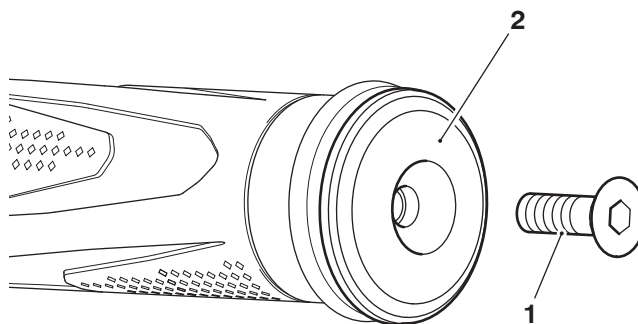
---

**Item:** .1  
**Description:** Handlebar End Weight Fixings  
**Model Affected:** Street Triple S, Street Triple S 660cc, Street Triple S 35 kW A2 Restricted Licence Version, Street Triple R, Street Triple R - LRH (Low Ride Height), Street Triple RS

The torque figure has changed. If loosened or removed for any reason the encapsulated fixing(s) must be replaced.

Tighten the fixings to **5 Nm**.

When ordering replacement parts, refer to the EPC.



L0407

1. Fixing
2. Handlebar end weight

**Please mark your copy of the Service Manual with this information. For electronic service manuals, store this information in a readily accessible place and refer to it often. This information will be included in the next service manual update.**

---

**Item:** .2  
**Description:** Coolant Expansion Tank Cover Fixings  
**Model Affected:** Tiger Explorer XR, Tiger Explorer XRX, Tiger Explorer XRX-LRH, Tiger Explorer XRT, Tiger Explorer XC, Tiger Explorer CX, Tiger Explorer CX-LRH, Tiger Explorer XCA

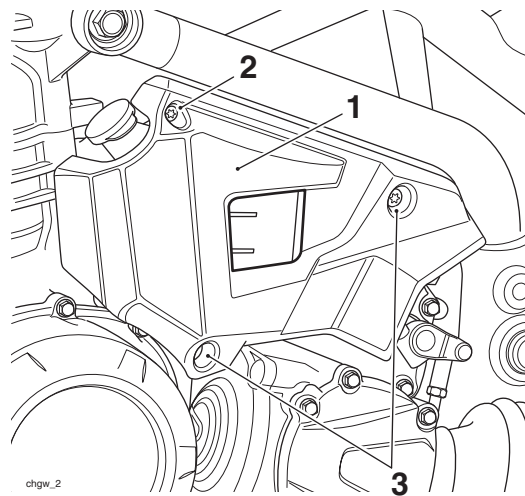
The torque figure for the coolant expansion tank cover lower M6 fixings has changed. If loosened or removed for any reason the fixings must be torqued as required.

Tighten the fixings to **4 Nm**.

**Note:**

- The lower M6 fixings are not encapsulated and do not need to be replaced if loosened or removed.
- The torque figure for the upper M5 fixing remains unchanged.
- The upper M5 fixing is encapsulated. If loosened or removed for any reason the encapsulated fixing must be replaced.

When ordering replacement parts, refer to the EPC.



1. Coolant expansion tank cover
2. Upper M5 fixing (encapsulated)
3. Lower M6 fixings (not encapsulated)

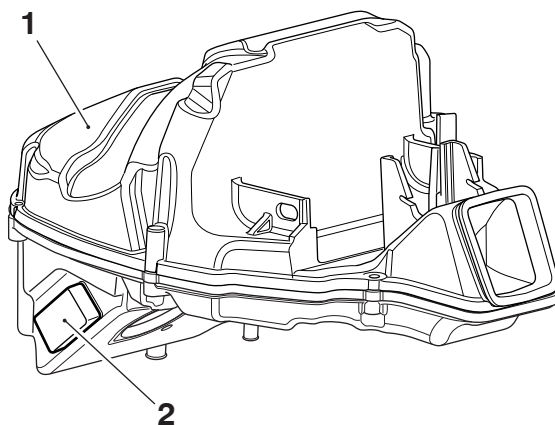
**Please mark your copy of the Service Manual with this information. For electronic service manuals, store this information in a readily accessible place and refer to it often. This information will be included in the next service manual update.**

---

**Item:** .3  
**Description:** Airbox and Immobiliser Connector Anti-Tamper Foam Pad  
**Model Affected:** Speed Triple S, Speed Triple R

A new airbox with revised geometry was introduced on the above models from VIN 781311 (VIN 785702 for the Brazilian market). To coincide with this, a self adhesive anti-tamper foam pad was also introduced to restrict access to the immobiliser/TPMS ECM connector.

When replacing an airbox on the models listed in the VIN range above, always ensure that an anti-tamper foam pad is fitted in the location shown below.



- 1. Airbox
- 2. Anti-Tamper Foam Pad

When ordering replacement parts, refer to the EPC.

**Please mark your copy of the Service Manual with this information. For electronic service manuals, store this information in a readily accessible place and refer to it often. This information will be included in the next service manual update.**

**Item:** .4  
**Description:** Scheduled Maintenance Chart  
**Model Affected:** Tiger Explorer XR, Tiger Explorer XRX, Tiger Explorer XRX-LRH, Tiger Explorer XRT, Tiger Explorer XC, Tiger Explorer XCX, Tiger Explorer XCX-LRH, Tiger Explorer XCA

It has come to our attention that the Scheduled Maintenance Chart contained in the Service Manual for the above models was published with incorrect 6,000 mile (10,000 km) mileage based service intervals. We would like to confirm that mileage based services should be carried out every 10,000 miles (16,000 km) on the above models.

The amended Scheduled Maintenance Chart is shown below:

**Note:**

- The amended Scheduled Maintenance Chart shown below also includes recent updates as per issue 19 of the Scheduled Maintenance Check Sheet.

| Operation Description  | Odometer Reading in Miles (Km) or Time Period, whichever comes first |                      |                |  |                    |                    |
|--|--|----------------------|----------------|--|--------------------|--------------------|
|  |  | First Service        | Annual Service | Mileage Based Service                          |                    |                    |
|  | Every  | 500 (800)<br>1 month | Year           | 10,000 and<br>30,000<br>(16,000 and<br>48,000) | 20,000<br>(32,000) | 40,000<br>(64,000) |
| <b>Lubrication</b>   |  |                      |                |  |                    |                    |
| Engine and oil cooler - check for leaks  | Day  | •                    | •              | •  | •                  | •                  |
| Engine oil - renew   | -  | •                    | •              | •  | •                  | •                  |
| Engine oil filter - renew  | -  | •                    | •              | •  | •                  | •                  |
| <b>Fuel System and Engine Management</b>   |  |                      |                |  |                    |                    |
| Autoscan - Carry out a full Autoscan using the Triumph Diagnostic Tool (print a customer copy) | -  | •                    | •              | •  | •                  | •                  |
| Fuel system - check for leaks  | Day  | •                    | •              | •  | •                  | •                  |
| Fuel system - check fuel hoses for chafing, cracks or damage. Replace if necessary             | -  |                      |                | •  | •                  | •                  |
| Air cleaner - renew  | -  |                      |                | •  | •                  | •                  |
| Throttle body plate (butterfly) - check/clean  |  |                      |                | •  | •                  | •                  |
| Throttle bodies - balance  | -  |                      |                | •  | •                  | •                  |
| Fuel hoses - renew   | Every four years, regardless of mileage                              |                      |                |  |                    |                    |
| Evaporative loss hoses - renew   | Every four years, regardless of mileage                              |                      |                |  |                    |                    |
| <b>Ignition System</b>   |  |                      |                |  |                    |                    |
| Spark plugs - check  | -  |                      |                | •  |                    |                    |
| Spark plugs - renew  | -  |                      |                |  | •                  | •                  |
| <b>Cooling System</b>  |  |                      |                |  |                    |                    |
| Cooling system - check for leaks   | Day  | •                    | •              | •  | •                  | •                  |

| Operation Description   | Odometer Reading in Miles (Km) or Time Period, whichever comes first |                      |                |  |                    |                    |
|---|--|----------------------|----------------|--|--------------------|--------------------|
|   |  | First Service        | Annual Service | Mileage Based Service                          |                    |                    |
|   | Every  | 500 (800)<br>1 month | Year           | 10,000 and<br>30,000<br>(16,000 and<br>48,000) | 20,000<br>(32,000) | 40,000<br>(64,000) |
| Cooling system - check coolant hoses for chafing, cracks or damage. Replace if necessary                      | -  |                      |                | •  | •                  | •                  |
| Coolant level - check/adjust  | Day  | •                    | •              | •  | •                  | •                  |
| Coolant - renew   | Every 3 years regardless of mileage                                  |                      |                |  |                    |                    |
| <b>Engine</b>   |  |                      |                |  |                    |                    |
| Clutch master cylinder - check for leaks  | -  | •                    | •              | •  | •                  | •                  |
| Clutch fluid levels - check   | Day  | •                    | •              | •  | •                  | •                  |
| Clutch fluid - renew  | Every 2 years, regardless of mileage                                 |                      |                |  |                    |                    |
| Valve clearances - check  | -  |                      |                |  | •                  | •                  |
| Camshaft timing - check/adjust  | -  |                      |                |  | •                  | •                  |
| <b>Wheels and Tyres</b>   |  |                      |                |  |                    |                    |
| Wheels - inspect for damage   | Day  | •                    | •              | •  | •                  | •                  |
| Wheel bearings - check for wear/ smooth operation   | -  | •                    | •              | •  | •                  | •                  |
| Wheels - check wheels for broken or damaged spokes and check spoke tightness (models with spoked wheels only) | -  | •                    | •              | •  | •                  | •                  |
| Tyre wear/tyre damage - check   | Day  | •                    | •              | •  | •                  | •                  |
| Tyre pressures - check/adjust   | Day  | •                    | •              | •  | •                  | •                  |
| <b>Steering and Suspension</b>  |  |                      |                |  |                    |                    |
| Steering - check for free operation   | Day  | •                    | •              | •  | •                  | •                  |
| Front and rear suspension - check for damage/leaks/smooth operation   | Day  | •                    | •              | •  | •                  | •                  |
| Fork oil - renew  | -  |                      |                |  |                    | •                  |
| Headstock bearings - check/adjust   | -  |                      | •              | •  | •                  | •                  |
| Headstock bearings - lubricate  | -  |                      |                |  | •                  | •                  |
| Rear suspension linkage - check/ lubricate  | -  |                      |                |  | •                  | •                  |
| <b>Brakes</b>   |  |                      |                |  |                    |                    |
| Brake pads - check wear levels  | Day  | •                    | •              | •  | •                  | •                  |
| Brake master cylinders - check for fluid leaks  | Day  | •                    | •              | •  | •                  | •                  |
| Brake calipers - check for fluid leaks and seized pistons   | Day  | •                    | •              | •  | •                  | •                  |

| Operation Description   | Odometer Reading in Miles (Km) or Time Period, whichever comes first |                      |                |  |                    |                    |
|---|--|----------------------|----------------|--|--------------------|--------------------|
|   |  | First Service        | Annual Service | Mileage Based Service                          |                    |                    |
|   | Every  | 500 (800)<br>1 month | Year           | 10,000 and<br>30,000<br>(16,000 and<br>48,000) | 20,000<br>(32,000) | 40,000<br>(64,000) |
| Brake fluid levels - check  | Day  | •                    | •              | •  | •                  | •                  |
| Brake fluid - renew   | Every 2 years regardless of mileage                                  |                      |                |  |                    |                    |
| <b>Final Drive</b>  |  |                      |                |  |                    |                    |
| Final drive - check for oil leaks   | Day  | •                    | •              | •  | •                  | •                  |
| Final drive oil level - check   | -  |                      | •              | •  | •                  | •                  |
| Final drive oil - renew - only first service  | -  | •                    |                |  |                    |                    |
| <b>Electrical</b>   |  |                      |                |  |                    |                    |
| All lights, instruments and electrical systems - check  | Day  | •                    | •              | •  | •                  | •                  |
| <b>General</b>  |  |                      |                |  |                    |                    |
| Instruments, chassis ECM and engine ECM - check for latest calibration download using the Triumph diagnostic tool | -  | •                    | •              | •  | •                  | •                  |
| Bank angle indicators - check for wear  | Day  | •                    | •              | •  | •                  | •                  |
| Fasteners - inspect visually for security   | Day  | •                    | •              | •  | •                  | •                  |
| Accessory rack sliding carriage - check for correct operation†  | -  |                      | •              | •  | •                  | •                  |
| Accessory pannier link bar - check for correct operation and adjustment†  | -  |                      | •              | •  | •                  | •                  |
| Side stand - check operation  | Day  | •                    | •              | •  | •                  | •                  |
| Centre stand - check operation  | Day  | •                    | •              | •  | •                  | •                  |
| Centre stand flanged sleeves - check/clean/grease   | -  |                      | •              | •  | •                  | •                  |
| Gear change pedal - clean bushes  | -  |                      | •              | •  | •                  | •                  |
| Carry out all outstanding Service Bulletin and warranty work  | -  | •                    | •              | •  | •                  | •                  |
| Carry out road test   | -  | •                    | •              | •  | •                  | •                  |
| Complete the service record book and reset the service indicator  | -  | •                    | •              | •  | •                  | •                  |
| † Only if fitted  |  |                      |                |  |                    |                    |

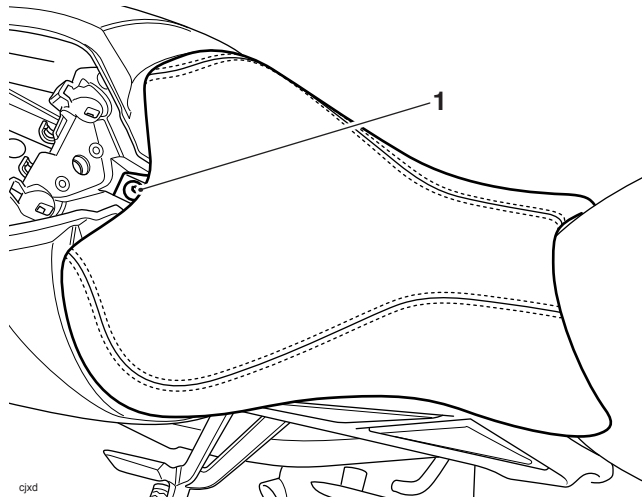
---

**Item:** .5  
**Description:** Rider's Seat Fixing  
**Model Affected:** Street Triple S, Street Triple S 660cc, Street Triple S 35 kW A2 Restricted Licence Version, Street Triple R, Street Triple R - LRH (Low Ride Height), Street Triple RS

The torque figure has changed. If loosened or removed for any reason the fixing(s) must be torqued as required.

Tighten the fixing to **3 Nm**.

When ordering replacement parts, refer to the EPC.



#### 1. Fixing

**Please mark your copy of the Service Manual with this information. For electronic service manuals, store this information in a readily accessible place and refer to it often. This information will be included in the next service manual update.**

---

**Item:** .6  
**Description:** Triumph Diagnostic Tool - End of Support for Microsoft Windows Vista®  
**Model Affected:** N/A

We would like to inform dealers that the Triumph Diagnostic Tool will not continue to support computers running Microsoft Windows Vista® from 11th April 2017 onwards. From this date the software may still work with Microsoft Windows Vista®, but no technical support will be offered by Triumph.

Details of the minimum equipment required to run the Triumph Diagnostic Tool are listed below:

- A desktop or laptop Personal Computer (PC) running Microsoft Windows 7®, Windows 8®, Windows 8.1® or Windows 10®.
- A 1 GHz processor or equivalent, 10 GB of free hard disk space and a minimum of 512 to 1024 MB of memory (RAM).
- The PC must have a free USB (Universal Serial Bus) port.
- The PC must be connected to the internet (Broadband is not essential but is preferred).
- 1024 x 768 standard XGA monitor or a 1200 x 800 widescreen monitor.
- 32 bit/64 bit versions of Windows 7, 8, 8.1 and 10.

**Item:** .7  
**Description:** Temporary Packing Crate  
**Model Affected:** Speed Triple S, Speed Triple R

The above models will be temporarily packed in an alternative packing crate from VIN 825904. As a result, the above models will be supplied with the rear view mirrors and handlebar finishers not fitted. The rear view mirrors and handlebar finishers will be provided in the parts kit while the alternative packing crate is in use.

Upon unpacking, dealers are requested to fit the rear view mirrors and handlebar finishers to the affected motorcycles as part of the motorcycle assembly. A revised Motorcycle Assembly Guide is provided below.

**Note:**

- A second technical bulletin will be published to notify dealers when use of the normal packing crate resumes.

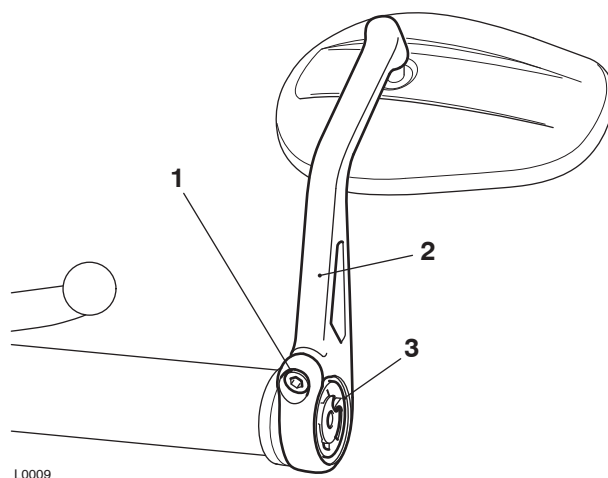
**Assembly**

1. Remove the motorcycle from the galvanised pressed steel delivery crate as described in Part 1 - Motorcycle Unpacking Guide.

**Warning**

Before starting work, ensure the motorcycle is stabilised and adequately supported. This will help prevent it from falling and causing injury to the operator or damage to the motorcycle.

2. Install the friction washers and mirrors to the handlebars.



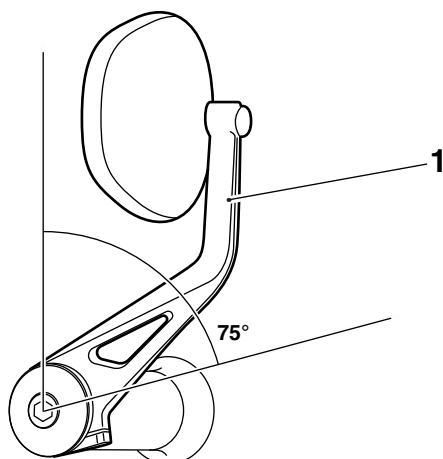
1. Clamp fixing
2. Mirror
3. Friction washer

**Caution**

Incorrect adjustment of the bar end mirrors may cause the mirror arm to make contact with the fuel tank, brake or clutch levers or other parts of the motorcycle. This will result in damage to the fuel tank, brake or clutch levers or other parts of the motorcycle.

Adjust the mirrors as required to ensure they do not contact any part of the motorcycle. After adjustment, move the handlebar to the left and right full lock while checking that the mirrors do not contact the fuel tank, brake or clutch levers or other parts of the motorcycle.

3. Position the mirrors to give rear visibility in the riding position. Do not rotate the mirror beyond 75°, measured from the vertical section of the mirror arm.



#### 1. Mirror arm vertical section

4. Tighten the mirror clamp fixing to **3.5 Nm**.

### **Warning**

If the mirror fixing is too loose, the mirror may blow back at speed. This will result in a loss of vision to the rear of the motorcycle. It is dangerous to ride a motorcycle without sufficient rearward vision.

5. Fit the finishers to the end of the handlebars and tighten the fixings to **5 Nm**.
6. Remove the bag containing the labels for the tyre pressure monitor system (TPMS) sensor codes from the ignition key.
7. Stick the labels into the general information section (Tyre Pressure Monitoring System) of the Owner's Handbook.

#### **Note:**

- **The TPMS sensors are individually coded for the front and rear wheels.**

8. Following the procedure listed in this model's handbook, check the engine oil has been pre-filled to the correct level.

#### **Note:**

- **Triumph recommend the use of Castrol Power 1 4T, 10W-40 for the initial running in period and a semi or fully synthetic 10W/40 or 10W/50 engine oil which meets specification API SH (or higher) and JASO MA such as Castrol Power 1 Racing 4T 10W-40 (fully synthetic) engine oil, sold as Castrol Power RS Racing 4T 10W-40 (fully synthetic) in some countries, thereafter.**
9. Clean off the protective coating from the tyres using a low alkaline soap and water solution.
  10. When required, carry out the pre-delivery inspection as detailed in Part 3 - Motorcycle Pre-Delivery Inspection Guide.

#### **Note:**

- **All Triumph motorcycles are still required to have their engine oil replaced at the first 500 mile (800 km) service.**
11. Stack or dispose the crate base as described in Part 1 - Motorcycle Unpacking Guide.

Item: .8

Description: Steering Lock Removal and Installation

Model Affected: Bonneville Bobber, Thunderbird Commander, Thunderbird LT

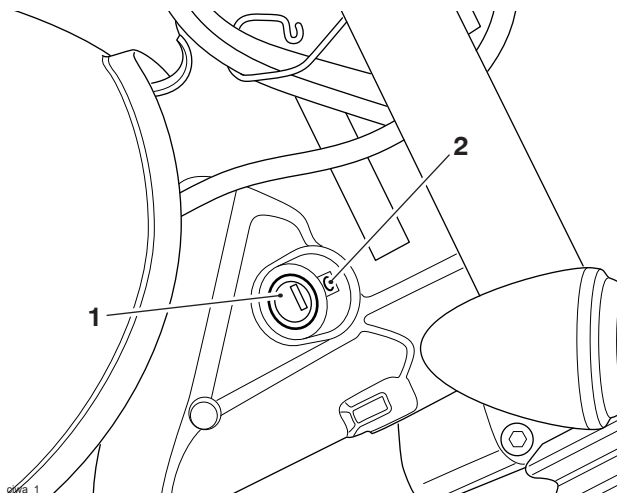
The method of removing and installing the steering lock on Bonneville Bobber, Thunderbird Commander and Thunderbird LT models is described below.

### Steering Lock Removal

## ⚠ Warning

Before starting work, ensure the motorcycle is stabilised and adequately supported. This will help prevent it from falling and causing injury to the operator or damage to the motorcycle.

- Disconnect the battery as described in the Service Manual.
  - Remove the fork assembly as described in the Service Manual.
  - Remove the upper yoke as described in the Service Manual.
  - Remove the lower yoke as described in the Service Manual.
1. Remove and discard the grub screw securing the steering lock to the headstock.



Bonneville Bobber shown

**1. Steering lock**

**2. Grub screw**

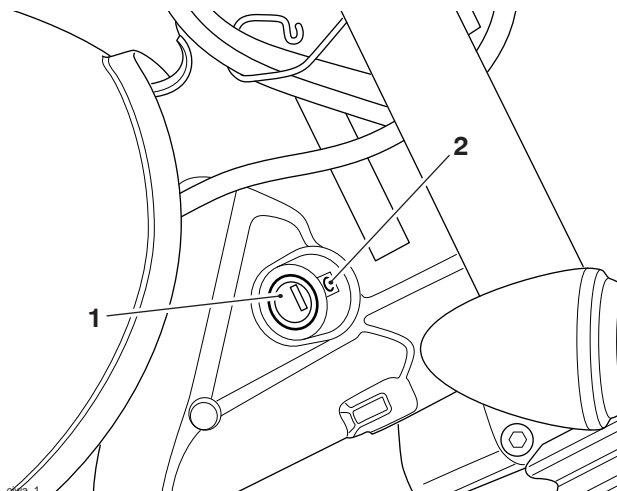
2. Withdraw the steering lock from the headstock.

## Steering Lock Installation

### **Warning**

Before starting work, ensure the motorcycle is stabilised and adequately supported. This will help prevent it from falling and causing injury to the operator or damage to the motorcycle.

1. Install the steering lock into the headstock, ensuring the flat on the lock barrel aligns with the grub screw position on the headstock. Secure with a new grub screw and tighten to **1.5 Nm**.



Bonneville Bobber shown

1. **Steering lock**
2. **Grub screw**

- Install the lower yoke as described in the Service Manual.
- Install the upper yoke as described in the Service Manual.
- Install the fork assembly as described in the Service Manual.
- Reconnect the battery as described in the Service Manual.

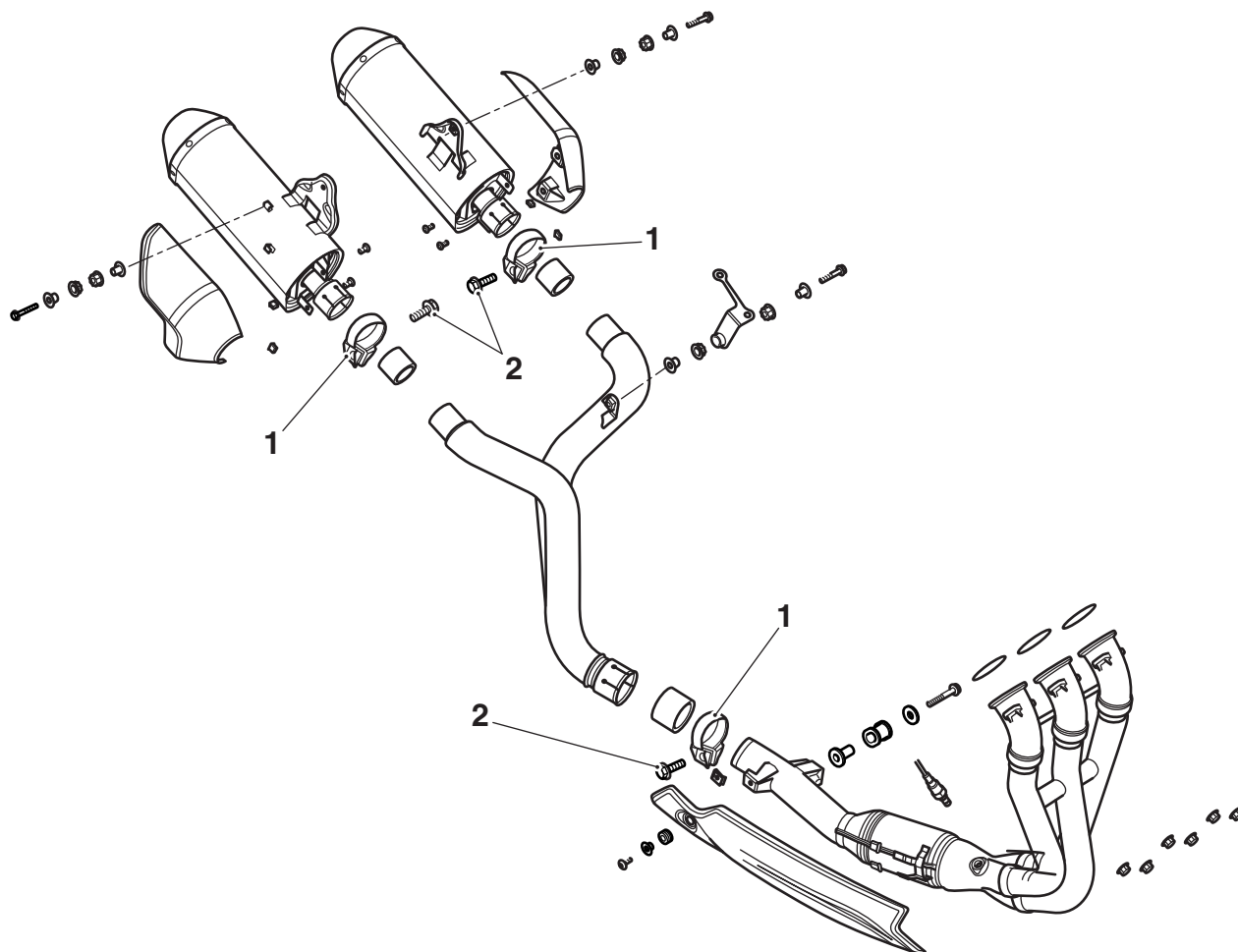
When ordering replacement parts, refer to the EPC.

**Please mark your copy of the Service Manual with this information. For electronic service manuals, store this information in a readily accessible place and refer to it often. This information will be included in the next service manual update.**

---

**Item:** .9  
**Description:** Exhaust Clamp and Bolt Assembly  
**Model Affected:** Speed Triple S, Speed Triple R

A new exhaust clamp assembly has been introduced on the above models from VIN 825904. The new exhaust clamp assembly features a separate bolt and is retrofittable to motorcycles from the start of production.



1. Exhaust clamp
2. Bolt

The torque figure for the new exhaust clamp bolt is **15 Nm**.

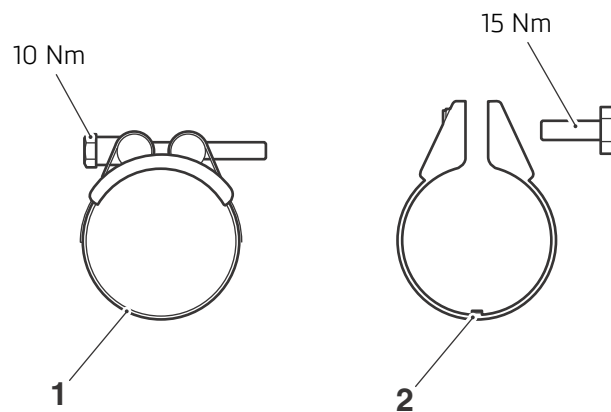
**Note:**

- Old condition exhaust clamps with a captive bolt need not be replaced unless necessary.
- The torque figure for the old condition exhaust clamps remains unchanged at 10 Nm.

---

**Note:**

- Identification of old and new condition exhaust clamps is as follows:



1. Old condition exhaust clamp
2. New condition exhaust clamp

When ordering replacement parts, refer to the EPC.

**Please mark your copy of the Service Manual with this information. For electronic service manuals, store this information in a readily accessible place and refer to it often. This information will be included in the next service manual update.**

---

**Item:** .10

**Description:** Service Manual Update - Purge Control Valve and Engine Breather Cover

**Model Affected:** Street Triple S, Street Triple S 660cc, Street Triple S 35 kW A2 Restricted Licence Version, Street Triple R, Street Triple R - LRH (Low Ride Height), Street Triple RS

A new purge control valve was introduced on the above models at start of production. As a result, the following Service Manual procedures have changed:

- Purge Control Valve - Removal and Installation.
- Engine Breather Cover - Removal and Installation.

The new procedures are detailed below:

### **Warning**

Before starting work, ensure the motorcycle is stabilised and adequately supported. This will help prevent it from falling and causing injury to the operator or damage to the motorcycle.

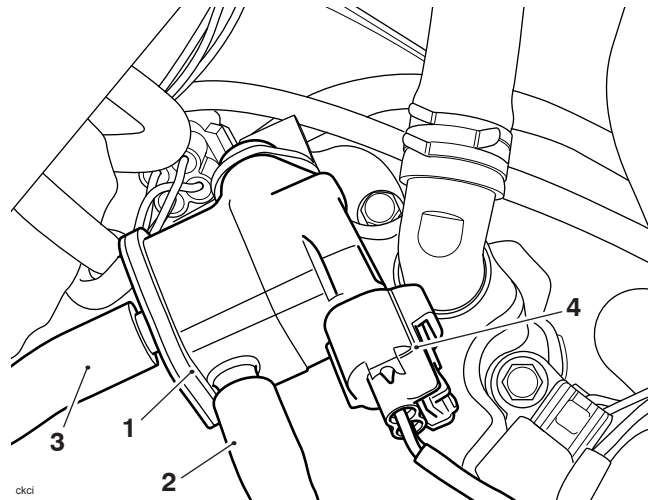
#### **Purge Valve - Removal**

- Remove the rider's seat as described in the Service Manual.
- Disconnect the battery, negative (black) lead first.
- Remove the fuel tank as described in the Service Manual.

#### **Note:**

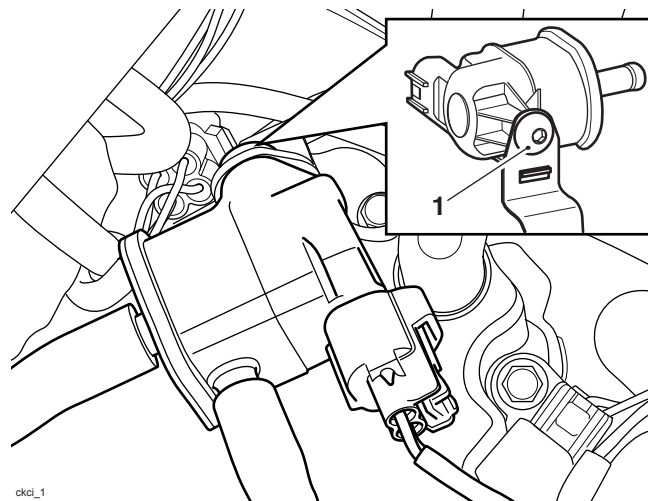
- **Note the routing of the purge control valve fly lead for installation.**
  - **Note the position of the purge control valve hoses for installation.**
1. Disconnect the fly lead electrical connector from the purge control valve.

- 
2. Disconnect the evaporative cannister and throttle body hoses from the purge control valve.



1. Purge control valve
2. Evaporative cannister hose
3. Throttle body hose
4. Fly lead electrical connector

3. Remove the fixing and remove the purge control valve.

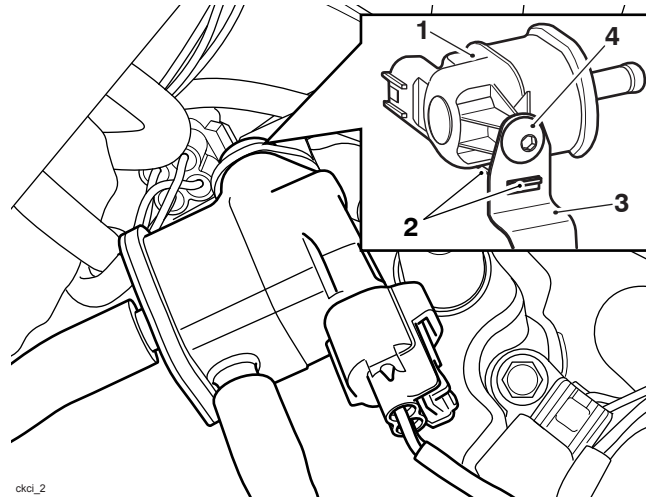


1. Fixing

---

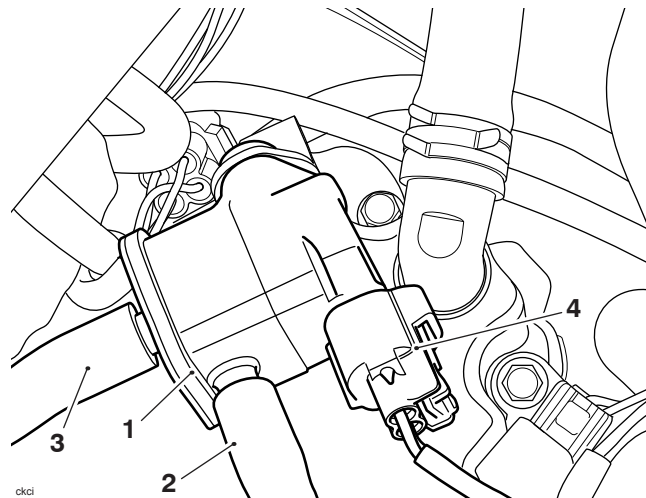
## Purge Control Valve - Installation

1. Position the purge control valve to its mounting bracket ensuring that the locating tab locates correctly into the bracket. Secure with the fixing and tighten to **3 Nm**.



1. **Purge control valve**
2. **Locating tab**
3. **Bracket**
4. **Fixing**

2. Connect the evaporative cannister and throttle body hoses as noted during removal.
3. Connect the fly lead electrical connector as noted during removal.



1. **Purge control valve**
2. **Evaporative cannister hose**
3. **Throttle body hose**
4. **Fly lead electrical connector**

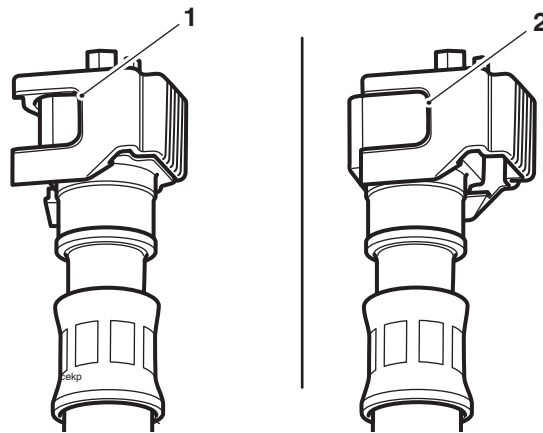
- Refit the fuel tank as described in the Service Manual.
- Connect the battery, positive (red) lead first.
- Refit the rider's seat as described in the Service Manual.

## Engine Breather Cover - Removal

- Remove the rider's seat as described in the Service Manual.
- Disconnect the battery, negative (black) lead first.
- Remove the fuel tank as described in the Service Manual.
- Remove the airbox as described in the Service Manual.
- Remove the purge control valve as described above.

**Note:**

- Note that the grey connector on the fuel hose connects to the fuel rail for installation.
1. Ease the latch away from the connector until the release buttons are exposed.

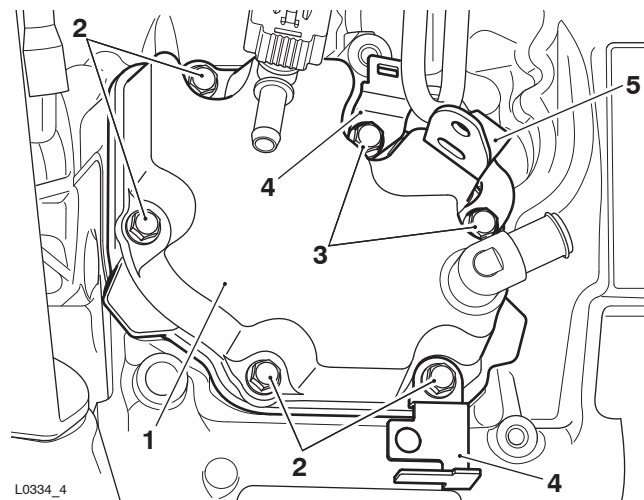


1. Locked position
2. Unlocked position

2. Disconnect the fuel hose by squeezing the sides of the connector and pulling the hose free from its spigot on the fuel rail.
3. Release the retaining clip and detach the engine breather hose from the engine breather cover.

**Note:**

- Note the positions of the two harness brackets and the purge control valve bracket for installation.
  - Note the position of the two M6 x 28 mm fixings for installation.
4. Release the six fixings and remove the engine breather cover. Position the harness brackets aside. Collect the purge control valve bracket.



1. Engine breather cover
2. M6 x 25 mm fixings
3. M6 x 28 mm fixings
4. Harness brackets (harnesses removed for clarity)
5. Purge control valve bracket

5. Discard the gasket.

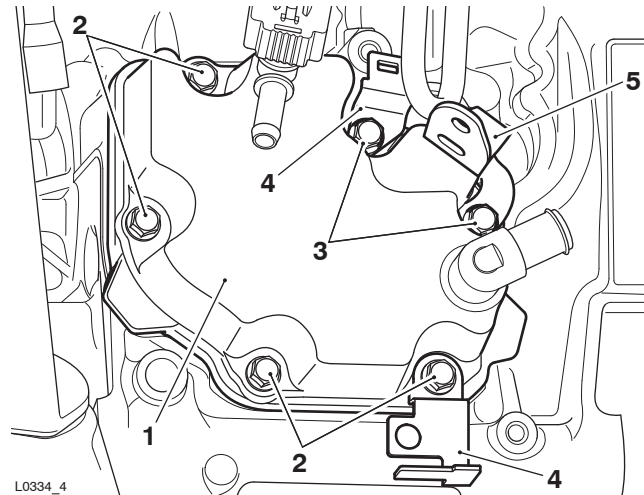
**Engine Breather Cover - Installation**

1. Fit a new engine breather cover gasket to the crankcase.

2. Fit the engine breather cover, ensuring that the gasket remains in the correct position.
3. Position the purge valve bracket and harness brackets to the engine breather cover as noted during removal.

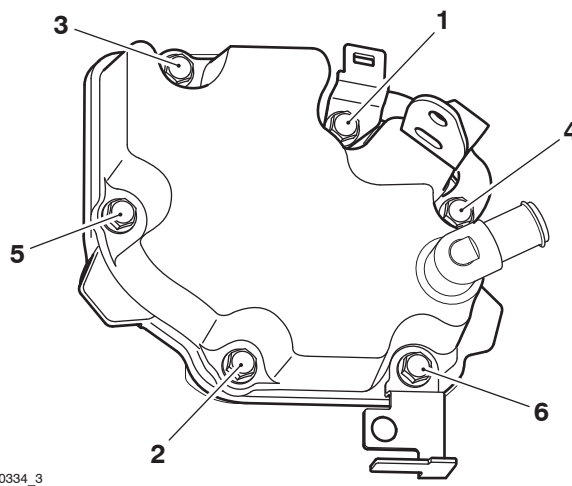
**Note:**

- **Ensure that the front harness bracket is positioned on top of the purge valve bracket.**
4. Fit the fixings, ensuring that the two M6 x 28 mm fixings are positioned as noted during removal.



1. **Engine breather cover**
2. **M6 x 25 mm fixings**
3. **M6 x 28 mm fixings**
4. **Harness brackets (harnesses removed for clarity)**
5. **Purge control valve bracket**

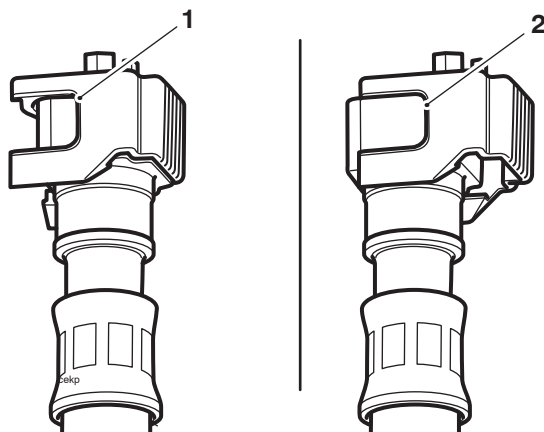
5. Tighten the fixings to **10 Nm** in the sequence shown below.



**Engine Breather Cover Fixings Tightening Sequence**

6. Re-tighten fixings one and two to **10 Nm**.
7. Reconnect the engine breather hose to the spigot on the engine breather cover and secure with the retaining clip.

- 
8. Reconnect the grey connector of the fuel hose to the fuel rail by gently pushing inwards until the hose engages with a click.
  9. Slide the double check latch to the locked position until the release buttons are covered. If the latch will not slide into position, then the fuel hose is not fully home on its spigot and must therefore be refitted correctly.



**1. Locked position**

**2. Unlocked position**

- Refit the purge control valve as described above.
- Refit the airbox as described in the Service Manual.
- Refit the fuel tank as described in the Service Manual.
- Connect the battery, positive (red) lead first.
- Refit the rider's seat as described in the Service Manual.

**Please mark your copy of the Service Manual with this information. For electronic service manuals, store this information in a readily accessible place and refer to it often. This information will be included in the next service manual update.**

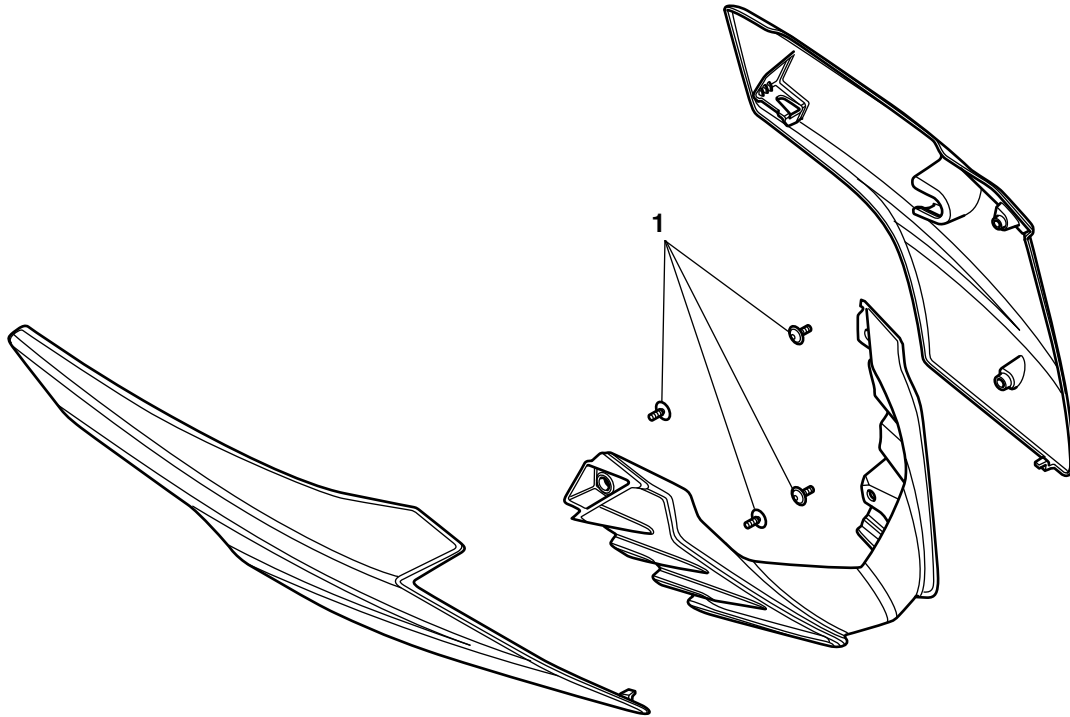
---

**Item:** .11  
**Description:** Belly Pan Panel Assembly Fixings  
**Model Affected:** Street Triple RS

The torque figure has changed. If loosened or removed for any reason the fixing(s) must be torqued as required.

Tighten the fixings to **1 Nm**.

When ordering replacement parts, refer to the EPC.



#### 1. Fixings

**Please mark your copy of the Service Manual with this information. For electronic service manuals, store this information in a readily accessible place and refer to it often. This information will be included in the next service manual update.**