



**Technical Bulletin 172**  
**02.2017**

**Contents**

<b>Item</b>	<b>Subject</b>	<b>Model Affected</b>
172.1	Power Output Conversion Options	Street Twin, Street Twin 35 kW A2 Restricted Licence Version, Street Scrambler, Street Cup, Bonneville T100, Bonneville T100 Black

**Item:** 172.1

**Description:** Power Output Conversion Options

**Model Affected:** Street Twin, Street Twin 35 kW A2 Restricted Licence Version, Street Scrambler, Street Cup, Bonneville T100, Bonneville T100 Black

The following table details the power output conversion options available for the above models, along with the parts and engine ECM calibrations required to perform a conversion.

Model	Original power output	Approved for conversion	Engine ECM calibration and parts required for conversion			
			Full power (A3 licence)		Restricted power (A2 licence)	
			Calibration	Twist grip	Calibration	Twist grip
<b>Current production (2017 model year)</b>						
Street Twin	Full power	No	-	-	-	-
Street Twin 35 kW A2 Restricted Licence Version	Restricted power	Yes	030000	Accessory kit A9638264	Original (030120)	Original (T2044046)
Street Scrambler	Full power	Yes	Original (030096)	Original (T2044045)	030121	Accessory kit A9638259
Street Cup	Full power	No	-	-	-	-
Bonneville T100 Bonneville T100 Black	Full power	No	-	-	-	-
<b>Production from 01/04/2017 (2018 model year)</b>						
Street Twin	Full power	Yes	Original (030000)	Original (T2044045)	030120	Accessory kit A9638259
Street Scrambler	Full power	Yes	Original (030096)	Original (T2044045)	030121	Accessory kit A9638259
Street Cup	Full power	Yes	Original (030070)	Original (T2044045)	030122	Accessory kit A9638259
Bonneville T100 Bonneville T100 Black	Full power	Yes	Original (030059) or 030084 (Models with cruise control)	Original (T2041554)	030123 or 030124 (Models with cruise control)	Accessory kit A9638260

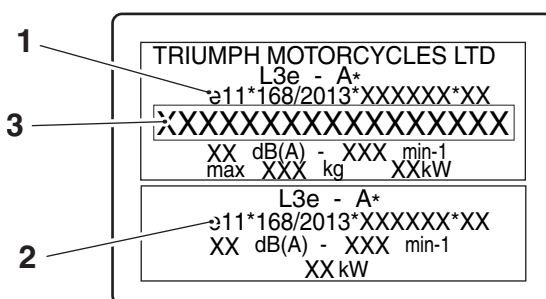
## Notice

Do not attempt to convert the power output of motorcycles that are not approved for power output conversion.

Altering the power output of motorcycles that are not approved for power output conversion is illegal under EU law.

**Note:**

- Motorcycles approved for power output conversion are fitted with the label shown below. The label is attached to the motorcycle's headstock area and displays both full power and restricted power type approval numbers.
- The model year of the motorcycle can be identified by the 11th character of the VIN number. The 11th character is H for 2017 model year, and J for 2018 model year.



1. Full power type approval number
2. Restricted power approval number
3. Vehicle Identification Number (VIN)

The type approval numbers for the above models are as follows:

Model	Full power type approval number	Restricted power type approval number
Street Twin	e11*168/2013*00204	-
Street Twin 35 kW A2 Restricted Licence Version	e11*168/2013*00204	e11*168/2013*00249
Street Scrambler	e11*168/2013*00245	e11*168/2013*00250
Street Cup	e11*168/2013*00226	e11*168/2013*00260
Bonneville T100 Bonneville T100 Black	e11*168/2013*00214	e11*168/2013*00259

**Note:**

- Always follow the instructions provided with the relevant accessory kit when restricting or de-restricting a motorcycle.
- The accessory kit and its instructions will contain any mandatory labels and certificates necessary for correctly completing the conversion.