



HYUNDAI Technical Service Bulletin

GROUP Campaign	NUMBER 17-01-068
DATE November, 2017	MODEL(S) Santa Fe (NC)

SUBJECT: LIFTGATE (TAILGATE) LABEL INSTALLATION
(SERVICE CAMPAIGN T2P)

★ IMPORTANT

*****DEALER STOCK ONLY*****

Dealers must perform this Service Campaign on all affected vehicles prior to customer retail delivery.

When a vehicle arrives at the Service Department, access Hyundai Motor America's "Warranty Vehicle Information" screen via WEBDCS to identify open Campaigns.

Description: This bulletin describes the procedure to install a tailgate label that will provide instruction to customers on the proper operation of both manual and power tailgates.

Manual Liftgate Lock/Unlock Operation
Remote/Smart Key Liftgate Button **ONLY UNLOCKS** the liftgate. To unlock, press and hold the Liftgate Button **A** on the Remote/SmartKey and manually open. The liftgate automatically locks upon closing.
For additional information, please refer to the Liftgate Section of the Owner's Manual.

Power Liftgate Height Adjustment
For your convenience, the liftgate opening height is adjustable. To program the opening height, perform the following:
1. Open liftgate and manually position liftgate to your preferred opening height
2. Depress and hold the close button on the liftgate for 3 seconds or more
3. The system will beep three times when the programming is complete

Applicable Vehicles: Certain 2018 Santa Fe (NC)

Parts Information:

Part Name	Part Number	Qty.
Manual Tailgate Label	81759-4Z000QQH	1 Pack (10 Count)
Power Tailgate Label	81759-4Z600QQH	1 Pack (10 Count)

NOTE 1: A pack of labels (10 Count) will be shipped to your dealership. Additional packs can be ordered through your facing PDC.

Warranty Information:

Model	Op. Code	Operation	Op. Time	Causal Part	Nature Code	Cause Code
Santa Fe (NC)	70C085R0	Tailgate label installation	0.2 M/H	73700-B8030	H12	ZZ3

NOTE 1: Submit Claim on Campaign Claim Entry Screen

NOTE 2: If a part is found in need of replacement while performing Service Campaign T2P and the affected part is still under warranty, submit a separate claim using the same Repair Order.

Circulate To: General Manager, Service Manager, Parts Manager, Warranty Manager, Service Advisors, Technicians, Body Shop Manager, Fleet Repair

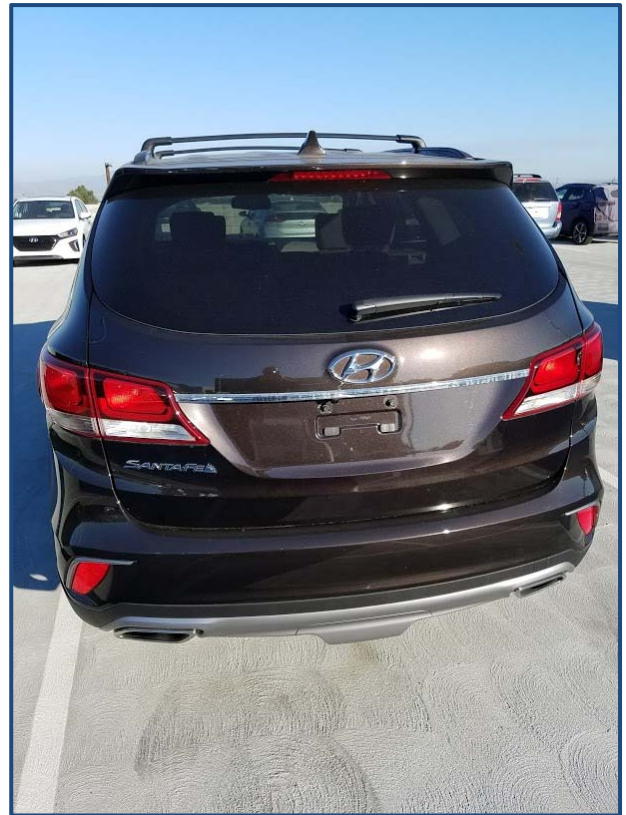
Service Procedure:

1. Identify whether vehicle has a manual or power liftgate (tailgate) by opening the tailgate.

Manual tailgate will open by pressing the handle switch and pulling the handle up.

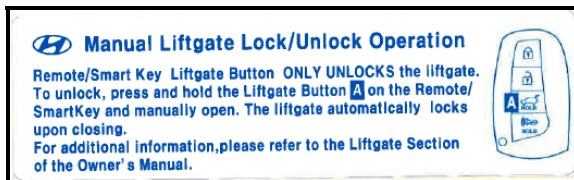
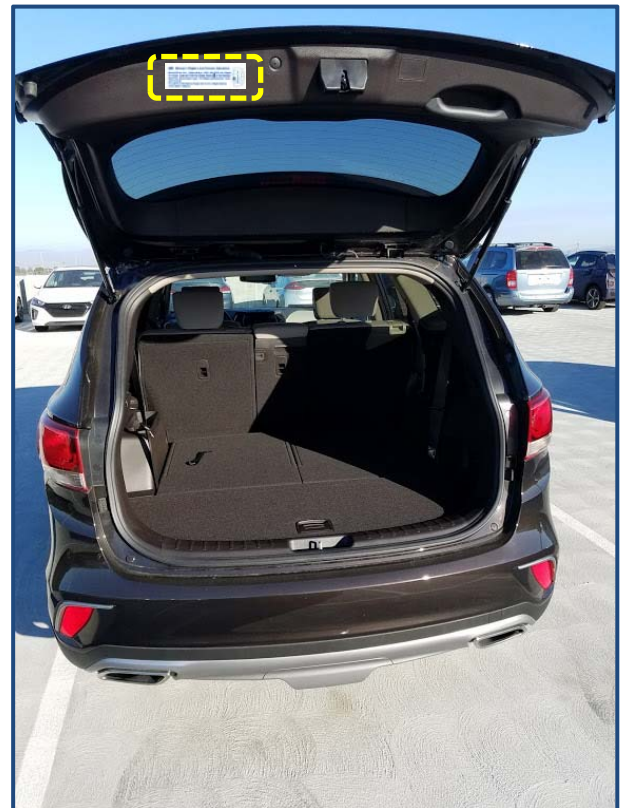
Power tailgate will open automatically by doing one of the following:

- Press the liftgate (tailgate) unlock button on the transmitter or smart key.
- Press the liftgate (tailgate) handle switch while carrying the smart key with you.



2. Make sure the surface is clean. If necessary, prepare the surface by wiping with an alcohol wipe.

For a Manual Liftgate (Tailgate), affix white label 81759-4Z000QQH to the tailgate in the yellow rectangle as shown in the picture. Apply uniform pressure to securely affix the label.



SANTA FE LIFTGATE (TAILGATE) LABEL (SERVICE CAMPAIGN T2P)

For Power Liftgate (Tailgate), affix blue label 81759-4Z600QQH to the tailgate in the yellow rectangle as shown in the picture. Apply uniform pressure to securely affix the label.

 **Power Liftgate Height Adjustment**

For your convenience, the liftgate opening height is adjustable. To program the opening height, perform the following:

1. Open liftgate and manually position liftgate to your preferred opening height.
2. Depress and hold the close button on the liftgate for 3 seconds or more.
3. The system will beep three times when the programming is complete.

