

# IMPORTANT UPDATE

**TECHNICAL INSTRUCTIONS  
FOR  
SPECIAL SERVICE CAMPAIGN H0P  
INSTRUMENT PANEL WIRE MODIFICATION  
CERTAIN 2017 MY YARIS (A/T)**

**Updated 10-20-17**

**Update 10-20-17**

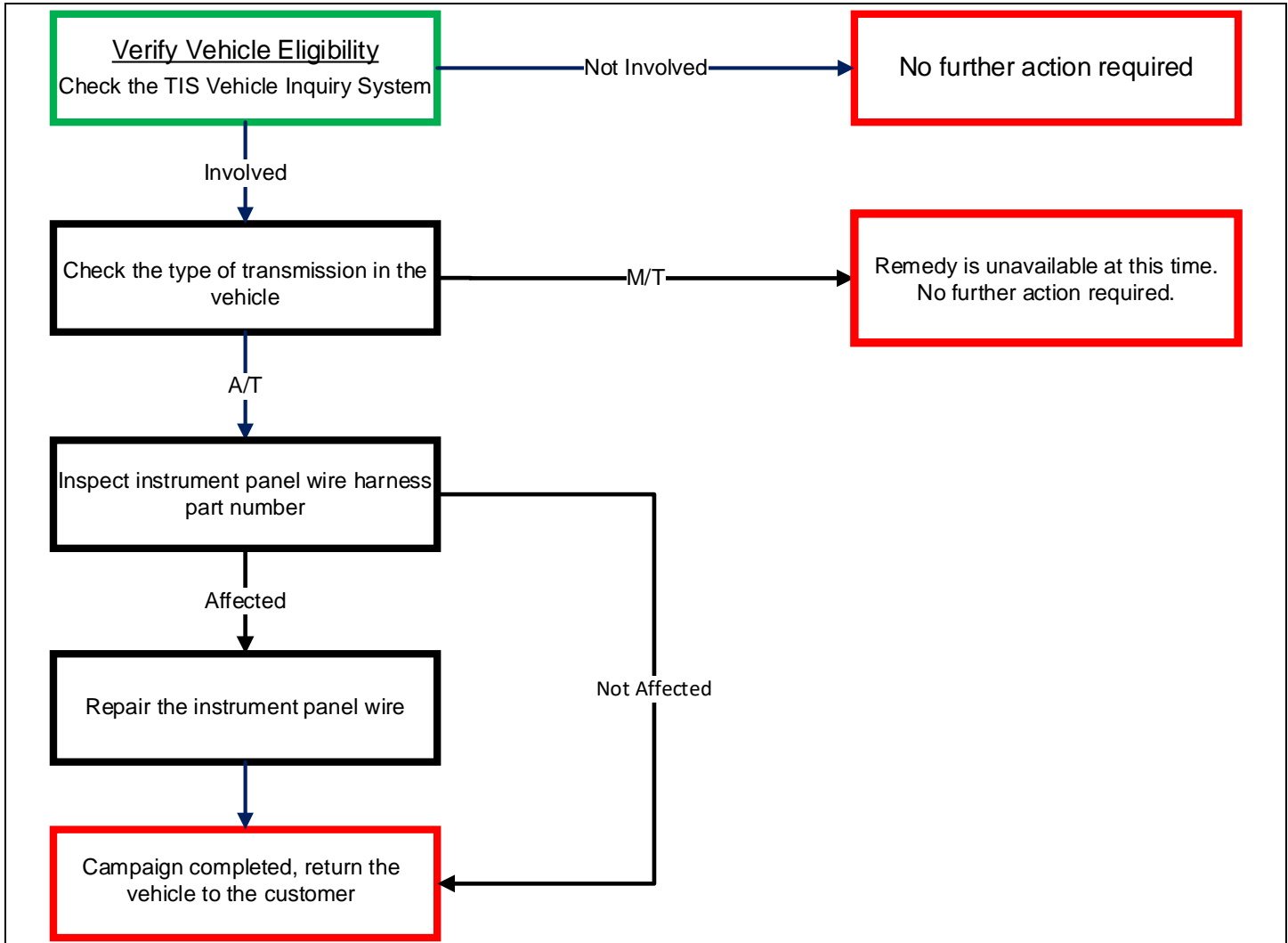
- **Update includes inspection instructions**

The repair quality of covered vehicles is extremely important to Toyota. All dealership technicians performing this recall are required to successfully complete the most current version of the E-Learning course "Safety Recall and Service Campaign Essentials". To ensure that all vehicles have the repair performed correctly; technicians performing this recall repair are required to currently hold at least one of the following certification levels:

- Certified Technician (Electrical)
- Expert Technician (Any Specialty)
- Master Technician
- Master Diagnostic Technician

It is the dealership's responsibility to select technicians with the above certification level or greater to perform this recall repair. Carefully review your resources, the technician skill level, and ability before assigning technicians to this repair. It is important to consider technician days off and vacation schedules to ensure there are properly trained technicians available to perform this repair at all times.

## I. OPERATION FLOW CHART



## II. IDENTIFICATION OF AFFECTED VEHICLES

- Check the TIS Vehicle Inquiry System to confirm the VIN is involved in this SSC, and that the Campaign has not already been completed prior to dealer shipment or by another dealer.
- TMS warranty will not reimburse dealers for repairs completed on vehicles that are not affected or were completed by another dealer.

### III. PREPARATION

#### A. TOOLS & EQUIPMENT

- Techstream
- Standard Hand Tools
- Protective Gloves

#### B. MATERIALS

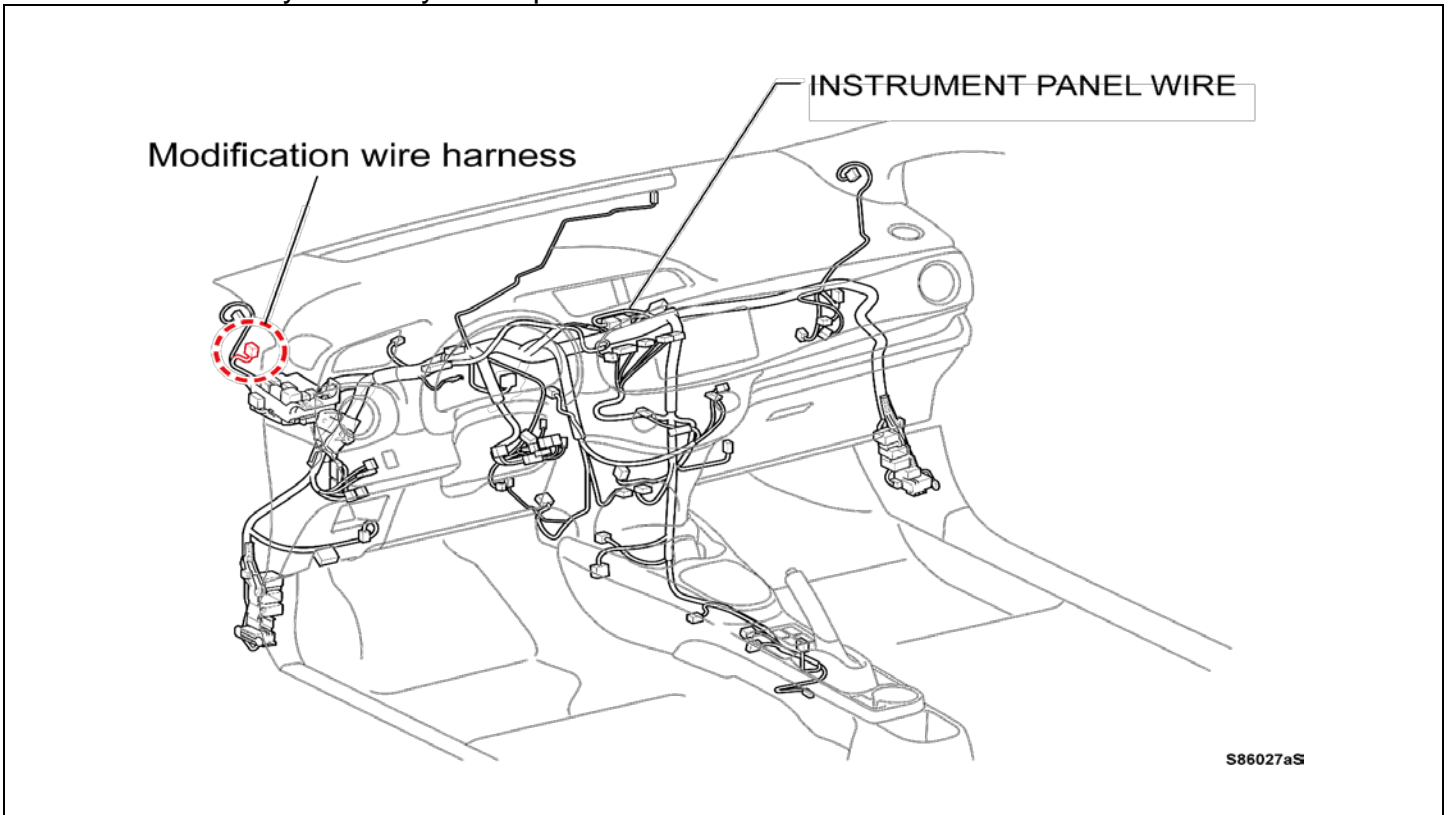
- Electrical Tape
- Nylon Closed-End Crimp Connector

### IV. WORK PROCEDURE TABLE OF CONTENTS

WORK PROCEDURE.....	SECTION VI
INSTRUMENT PANEL WIRE INSPECTION.....	SECTION VII
INSTRUMENT PANEL WIRE MODIFICATION .....	SECTION VIII
APPENDIX.....	SECTION IX

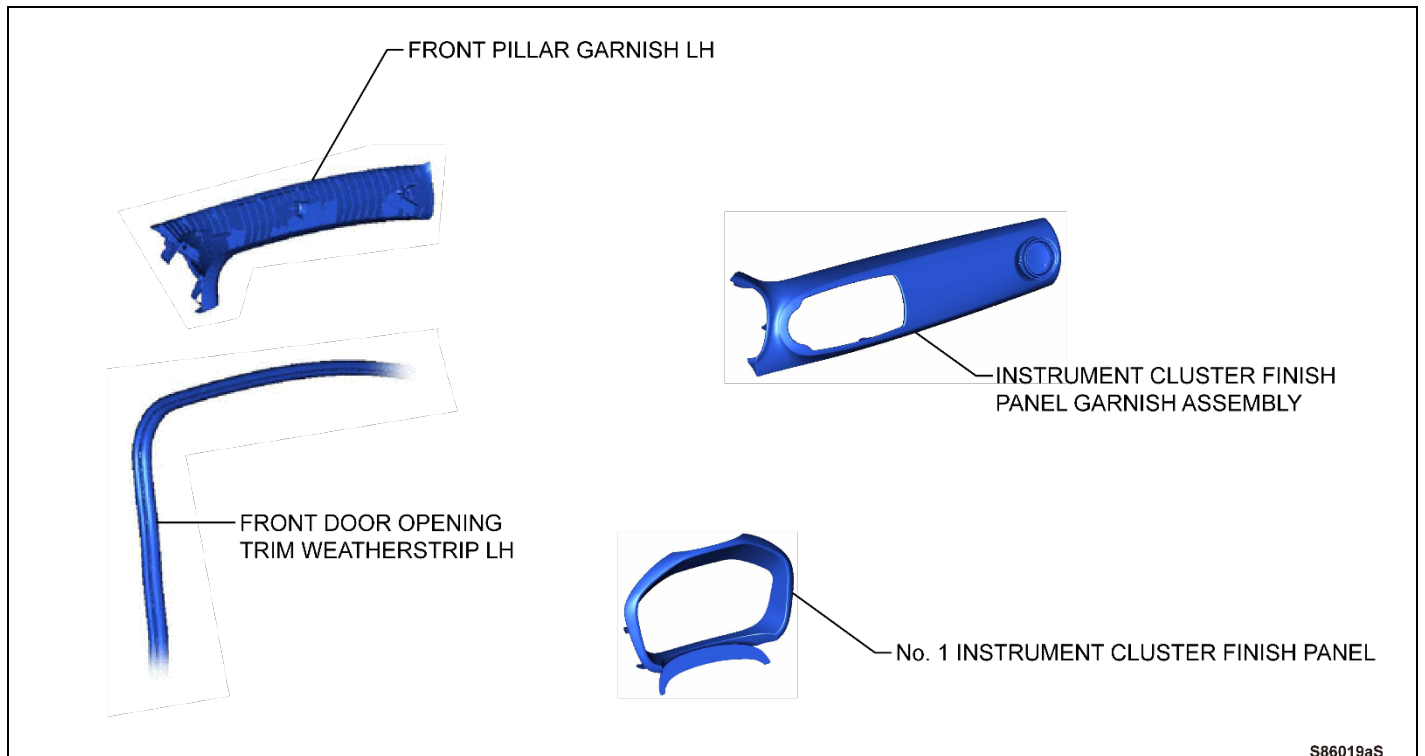
### V. BACKGROUND

In the subject vehicles, an incorrect instrument panel wire harness may have been installed during the vehicle assembly process. The incorrect instrument panel wire harness may not be compatible with the Pre-Collision system front sensor. As a result, the Automatic High Beam and Pre-Collision system may be inoperative.



## VI. WORK PROCEDURE

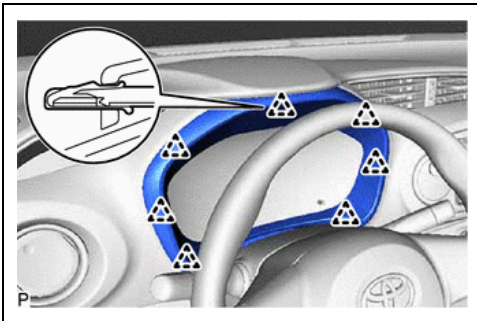
### A. COMPONENTS



#### 1. CHECK FOR DTC'S

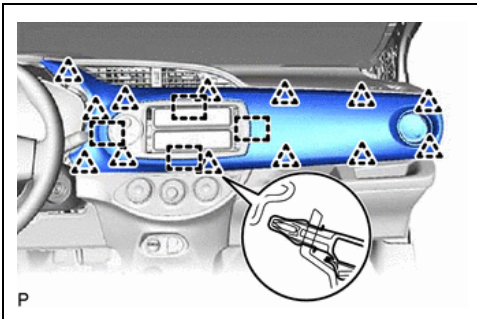
- a. If a DTC(s) is displayed, record the DTC and the freeze frame data and perform the repairs as necessary

## VII. INSTRUMENT PANEL WIRE INSPECTION



#### 2. REMOVE NO.1 INSTRUMENT CLUSTER FINISH PANEL

- a. Disengage the 7 clips to remove the No.1 instrument cluster finish panel



#### 3. REMOVE INSTRUMENT CLUSTER FINISH PANEL GARNISH ASSEMBLY

- a. Disengage the 13 clips and 4 guides to remove the instrument cluster finish panel garnish assembly

#### 4. FIND AND INSPECT THE INSTRUMENT PANEL WIRE HARNESS PART NUMBER

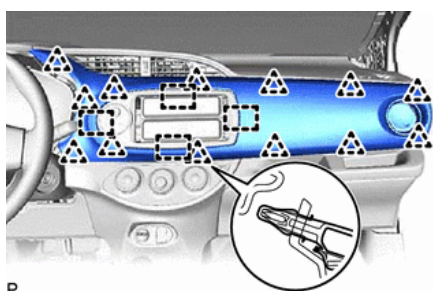


##### a. Modify only the following wire harness

- 82145-0UB21
- 82145-0DY61
- 82145-0DY71

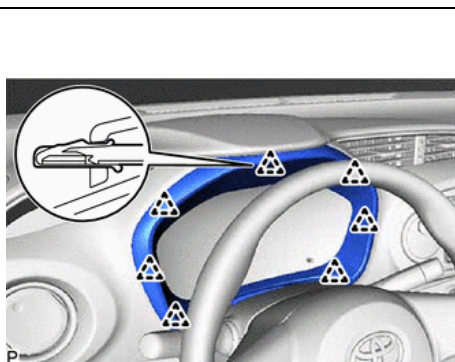


**Do NOT modify any other wire harness with a part number different than the ones listed above (ex. 82145-0DY60.)**



#### 5. INSTALL INSTRUMENT CLUSTER FINISH PANEL GARNISH ASSEMBLY

- a. Engage the 4 guides and 13 clips to install the instrument cluster finish panel garnish assembly



#### 6. INSTALL NO.1 INSTRUMENT CLUSTER FINISH PANEL

- a. Engage the 7 clips to install the No.1 instrument cluster finish panel
- If one of the three wire harness part numbers that require modification was found continue to **SECTION VIII. INSTRUMENT PANEL WIRE MODIFICATION.**
  - If any other harness part number was found then **STOP**, the campaign is complete

## VIII. INSTRUMENT PANEL WIRE MODIFICATION

### 7. RECORD AUDIO AND A/C SETTINGS

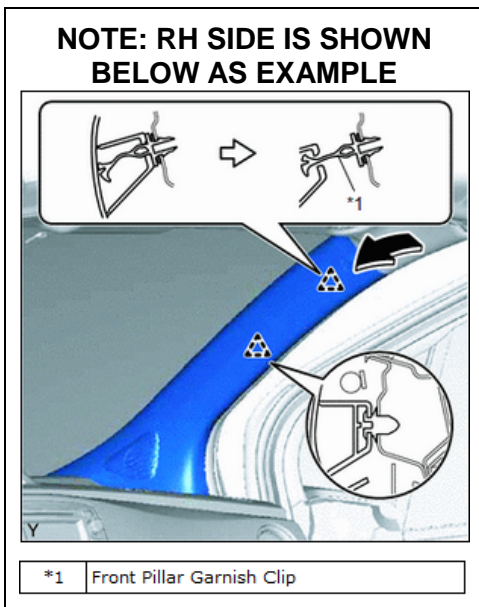
- a. When the battery cable is disconnected, the settings for the audio, air conditioning, etc. may be reset. Therefore, make a note of the settings before disconnecting the cable from the negative (-) battery terminal.

### 8. DISCONNECT CABLE FROM NEGATIVE BATTERY TERMINAL



**For models with a navigation system, wait at least 6 minutes before disconnecting the battery. It takes approximately 6 minutes for the system to save information and settings after the ignition switch is turned off.**

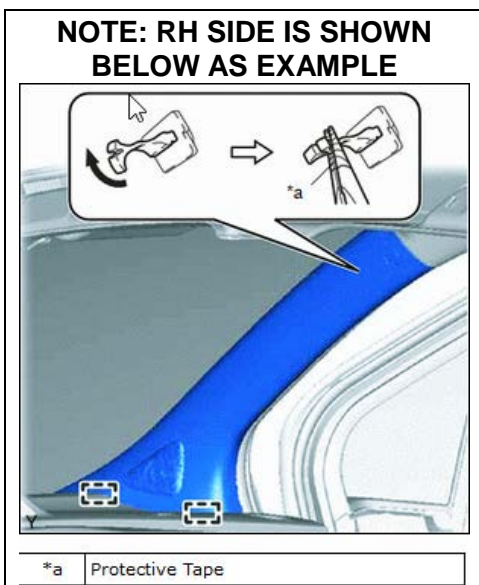
### 1. SEPARATE THE LEFT-HAND FRONT DOOR OPENING TRIM WEATHERSTRIP



### 2. REMOVE FRONT PILLAR GARNISH LH

- a. Disengage the front pillar garnish clips

**NOTE: The front pillar garnish clip should remain between the pillar garnish and the pillar**



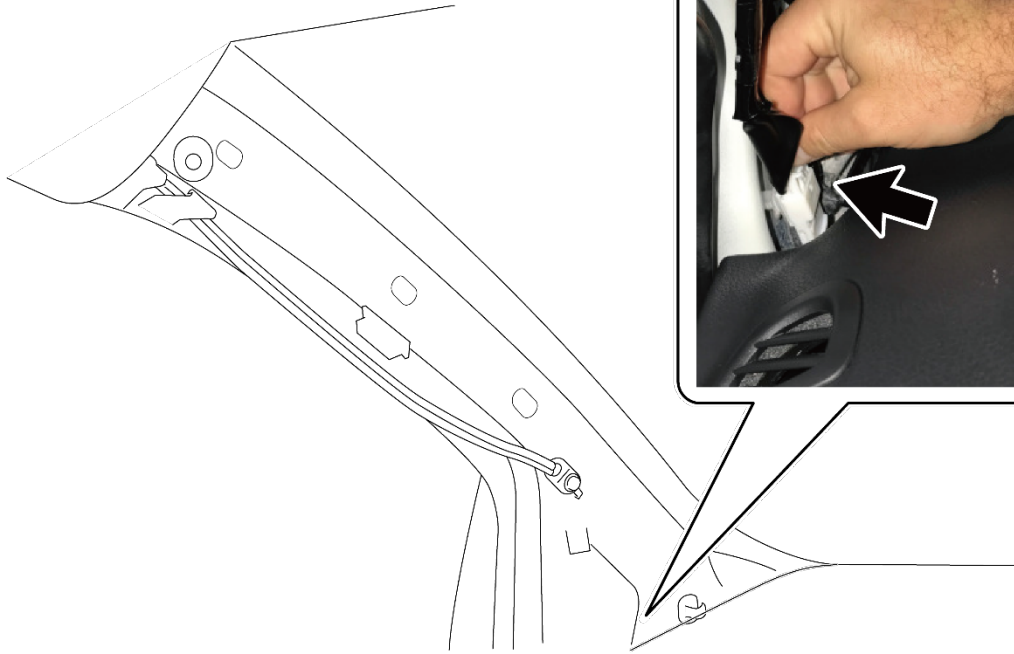
- b. Using needle nose pliers, turn the front pillar garnish 90° and disengage it from the front pillar garnish

**NOTE: Do NOT remove the garnish clip from the pillar as long as it is not damaged.**

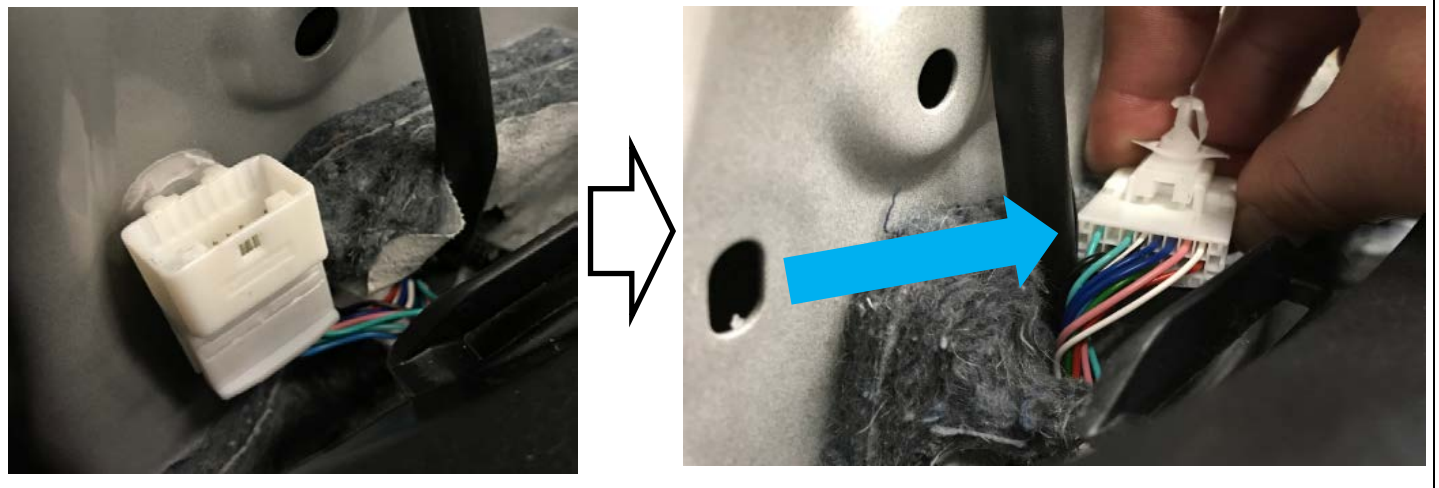
- c. Disengage the 2 guides to remove the front pillar garnish

**3. DISCONNECT INSTRUMENT PANEL WIRE FROM ROOF WIRE**

LH front pillar section



**4. REMOVE INSTRUMENT PANEL WIRE CLIP AT CONNECTOR FROM BODY**





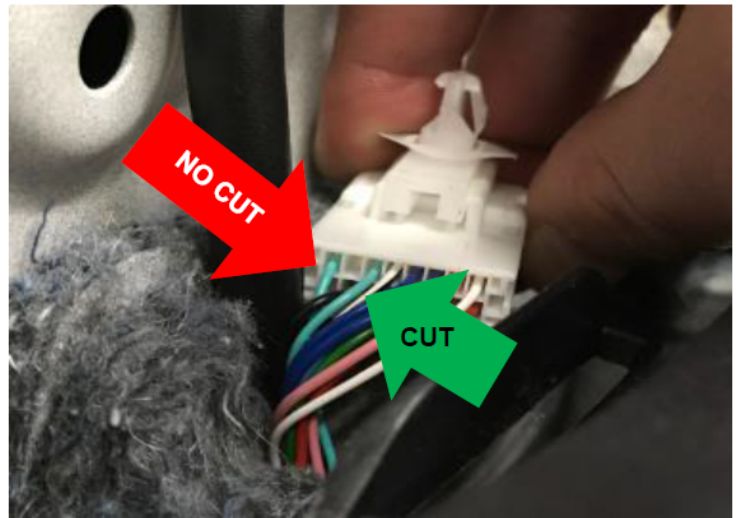
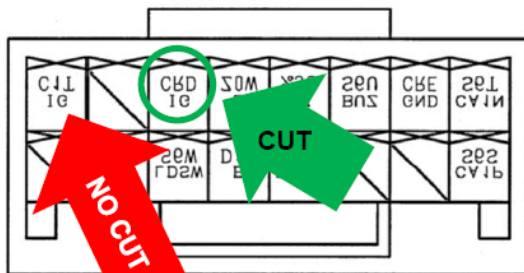
**5. CUT INSTRUMENT PANEL WIRE**

- a. After removal from the body, rotate the clip to expose the wires



**There are 2 light green wires! Make sure to cut wire that is more toward middle of connector.**

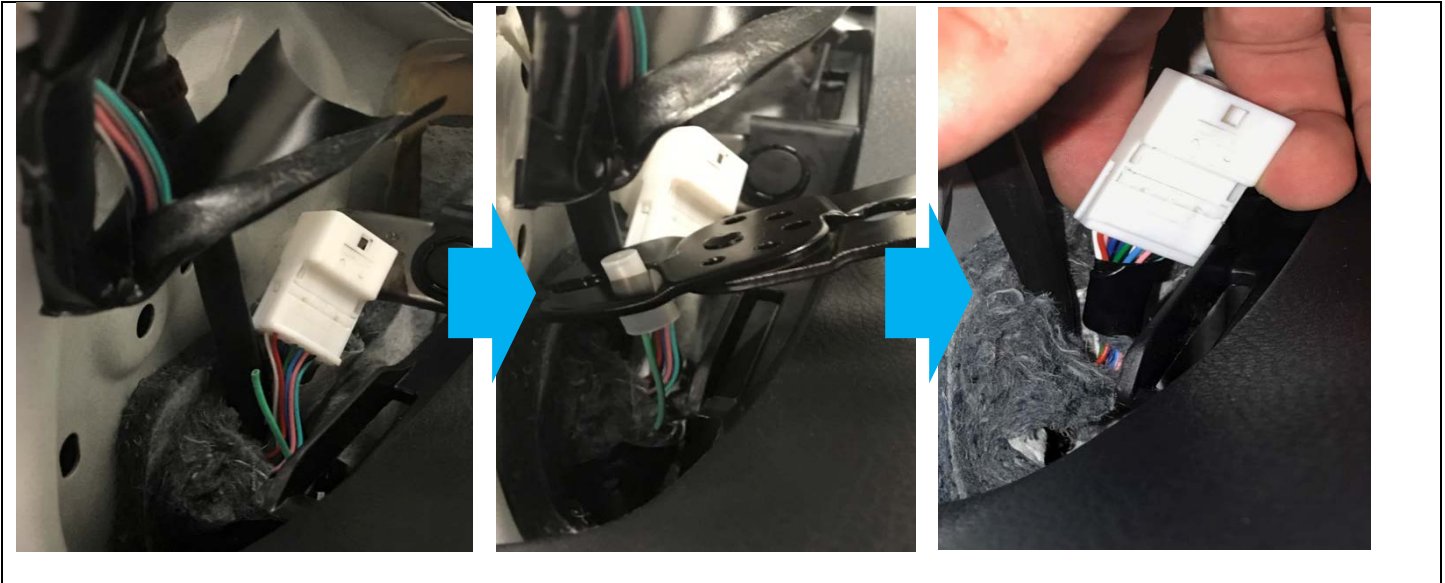
View from back of connector  
once rotated to  
proper orientation



- b. Cut the light green wire if the instrument panel wire as close to the connector as possible



- c. Cap the top of the cut wire and crimp it. Securely fasten the cut wire to the instrument panel wire with the vinyl tape



Nylon Closed-End Crimp Connector

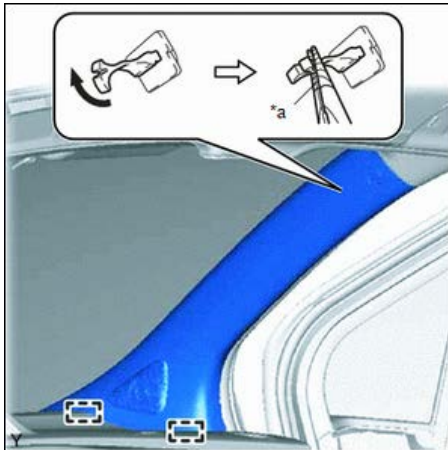


This wire is B+ 12V supply. It must be securely capped and taped to instrument panel wire bundle to avoid shorting.

**6. REINSTALL INSTRUMENT PANEL WIRE CLIP AT CONNECTOR FROM BODY**

**7. RECONNECT INSTRUMENT PANEL WIRE FROM ROOF WIRE**

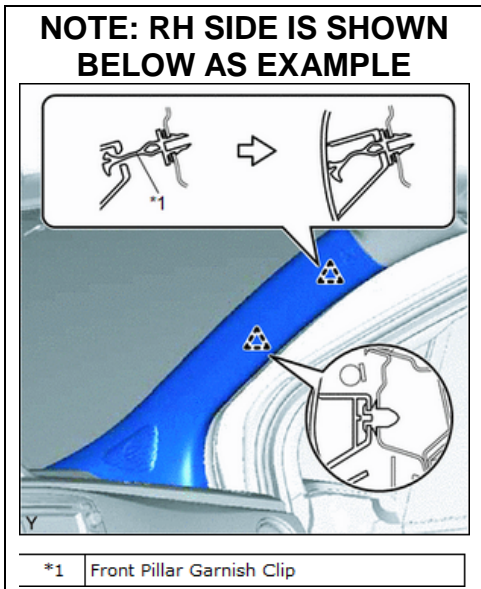
**NOTE: RH SIDE IS SHOWN BELOW AS EXAMPLE**



\*a Protective Tape

**8. INSTALL FRONT PILLAR GARNISH LH**

- a. Engage the 2 guides
- b. Turn the end of the front pillar garnish clip 90° with needle-nose pliers and install it into the front pillar garnish



- c. Engage both the clip and the front pillar garnish clip to install the front pillar garnish

**9. REINSTALL FRONT DOOR OPENING TRIM WEATHERSTRIP LH**

**10. RECONNECT THE CABLE TO THE NEGATIVE BATTERY TERMINAL**

**11. PERFORM HEALTH CHECK USING TECHSTREAM**

**12. REINSPECT AHB SYSTEM**

**13. MEMORIZE STEERING ANGLE NEUTRAL POINT**

- a. Start the engine
- b. Drive the vehicle straight ahead at 22 MPH (35 km/h) or more for 5 seconds or more
- c. Turn the ignition switch off

**14. RESTORE AUDIO AND AIR CONDITIONING SETTINGS**

## IX. APPENDIX

### A. PARTS DISPOSAL

As required by Federal Regulations, please make sure all recalled parts (original parts) removed from the vehicle are disposed of in a manner in which they will not be reused, ***unless requested for parts recovery return.***

### B. CAMPAIGN DESIGNATION DECORDER

