 HYUNDAI Technical Service Bulletin	GROUP AUTOMATIC TRANSMISSION	NUMBER 17-AT-007
	DATE SEPTEMBER, 2017	MODEL Accent (RB), Azera (TG/HG), Elantra (UD/MD/GD/JK/AD/ADa/PD), Santa Fe (CM/AN/NC), Sonata (LF/YF/YF HEV/LF HEV/PHEV), Tucson (LM/TL), Veloster (FS)
SUBJECT:	AUTOMATIC TRANSAXLE TORQUE CONVERTER INSTALLATION	

This TSB supersedes TSB 05-40-012 to update the Service Procedure and add new models.

Description: Before installing an automatic transmission, check the depth of the torque converter in the case to confirm the torque converter is fully installed in the transmission. If this is not done, the oil pump may be damaged.

Applicable Vehicles:

2012~	Accent (RB)
2011	Azera (TG)
2012~	Azera (HG)
2011~16	Elantra (MD/UD)
2013~14	Elantra Coupe (JK)
2013~ 17	Elantra GT (GD)
2018~	Elantra GT (PD)
2017~	Elantra (AD/ADa) 2.0L
2010~12	Santa Fe (CM) 2.4L/3.5L
2013~	Santa Fe Sport (AN)
2013~	Santa Fe (NC)
2011~14	Sonata (YF)
2015~	Sonata (LF) 2.0T/2.4L
2011~15	Sonata Hybrid (YF HEV)
2016~	Sonata Hybrid/Plug-in (LF HEV/PHEV)
2011~15	Tucson (LM)
2016~	Tucson (TL) 2.0L
2013~14	Veloster Turbo (FS)



SERVICE PROCEDURE:

Measure the depth of the torque converter in the converter housing. If the measurement is less than the specification, rotate the torque converter in either direction and push inward until the measurement is at specification.

NOTICE

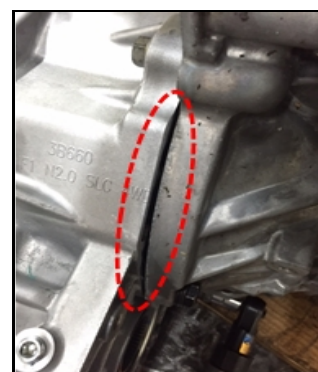
Do not use an impact gun to force the installation.



INSTALLATION	OK	NOT FULLY INSTALLED
<p>The torque converter must be recessed in the housing as show to the right. Refer to Page 3 for specifications.</p>		

Push the transmission forward until it is fully flush with the engine before installing the mounting bolts.

Do not use an impact gun to force the installation.



PARTS SPECIFICATION:

MODEL	TYPE	INSTALLATION DEPTH	
		MM	INCH
2012~ Accent (RB)	A6GF	7 ~ 9 mm	0.28 ~ 0.35 in.
2011 Azera (TG)	A6LF	10 ~ 13 mm	0.39 ~ 0.51 in.
2012~ Azera (HG)	A6LF	10 ~ 13 mm	0.39 ~ 0.51 in.
2011~16 Elantra (MD/UD) 1.8L	A6GF	7 ~ 9 mm	0.28 ~ 0.35 in.
2014~16 Elantra (MD) 2.0L	A6MF	7 ~ 14 mm	0.28 ~ 0.55 in.
2013 Elantra Coupe (JK) 1.8L	A6GF	7 ~ 9 mm	0.28 ~ 0.35 in.
2014 Elantra Coupe (JK) 2.0L	A6MF	7 ~ 14 mm	0.28 ~ 0.55 in.
2013 Elantra GT (GD) 1.8L	A6GF	7 ~ 9 mm	0.28 ~ 0.35 in.
2014~17 Elantra GT (GD) 2.0L	A6MF	7 ~ 14 mm	0.28 ~ 0.55 in.
2018~ Elantra GT (PD) 2.0L	A6MF	7 ~ 14 mm.	0.28 ~ 0.55 in.
2017~ Elantra (AD/ADa) 2.0L	A6GF	7 ~ 9 mm	0.28 ~ 0.35 in.
2010~12 Santa Fe (CM) 2.4L	A6MF	7 ~ 14 mm	0.28 ~ 0.55 in.
2010~12 Santa Fe (CM) 3.5L	A6LF	10 ~ 13 mm	0.39 ~ 0.51 in.
2013~ Santa Fe (NC)	A6LF	10 ~ 13 mm	0.39 ~ 0.51 in.
2013~ Santa Fe Sport (AN) 2.0T	A6LF	10 ~ 13 mm	0.39 ~ 0.51 in.
2013~ Santa Fe Sport (AN) 2.4L	A6MF	7 ~ 14 mm	0.28 ~ 0.55 in.
2011~14 Sonata (YF) 2.0T	A6LF	10 ~ 13 mm	0.39 ~ 0.51 in.
2011~14 Sonata (YF) 2.4L	A6MF	7 ~ 14 mm	0.28 ~ 0.55 in.
2015~17 Sonata (LF) 2.0T	A6LF	10 ~ 13 mm	0.39 ~ 0.51 in.
2018~ Sonata (LF) 2.0T	A8LF	10 ~ 13 mm	0.39 ~ 0.51 in.
2015~ Sonata (LF) 2.4L	A6MF	7 ~ 14 mm	0.28 ~ 0.55 in.
2011~ 15 Sonata Hybrid (YF HEV)	A6MF	7 ~ 14 mm	0.28 ~ 0.55 in.
2016~ Sonata Hybrid/Plug-in (LF HEV/PHEV)	A6MF	7 ~ 14 mm	0.28 ~ 0.55 in.
2011~15 Tucson (LM)	A6MF	7 ~ 14 mm	0.28 ~ 0.55 in.
2016~ Tucson (TL) 2.0L	A6MF	7 ~ 14 mm	0.28 ~ 0.55 in.
2013~14 Veloster Turbo (FS) 1.6T	A6MF	7 ~ 14 mm	0.28 ~ 0.55 in.