



Preliminary Information

PIT5533A Creek Click Pop Crack Type Noise From Front Suspension/Frame Area While Making Turns

Models

Brand:	Model:	Model Years:	VIN:		Engine:	Transmissions:
			from	to		
Cadillac	Escalade	2015 - 2018	All	All	All	All
Chevrolet	Silverado	2015 - 2018	All	All	All	All
Chevrolet	Suburban	2015 - 2018	All	All	All	All
Chevrolet	Tahoe	2015 - 2018	All	All	All	All
GMC	Sierra	2015 - 2018	All	All	All	All
GMC	Yukon	2015 - 2018	All	All	All	All
Involved Region or Country:		North America				
Condition:		Some owners may comment of a creek, click, pop, crack type noise from the front suspension or front frame area while making tight turns. It may also be noted the noise can be felt in the foot well area.				
Cause:		<p>It has been found that this type of noise could be caused by either insufficient torque of the front suspension:</p> <ul style="list-style-type: none"> - Frame crossmember - Lower control arm bolts 				

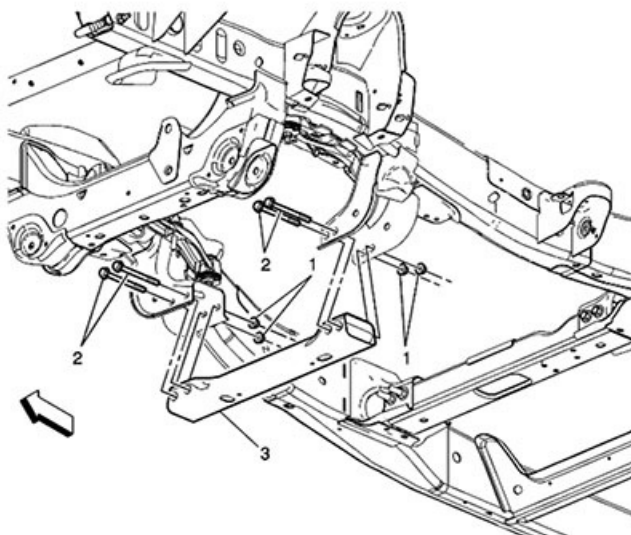
Correction:

Note: When completing the following corrections please document the before and after torque readings on the repair order.

Correction 1

To correct this concern loosen and then re-torque the four front frame crossmember bolts/nuts:

1. First Pass: 70 Nm (52 lb ft)
2. Final Pass: 110 degrees

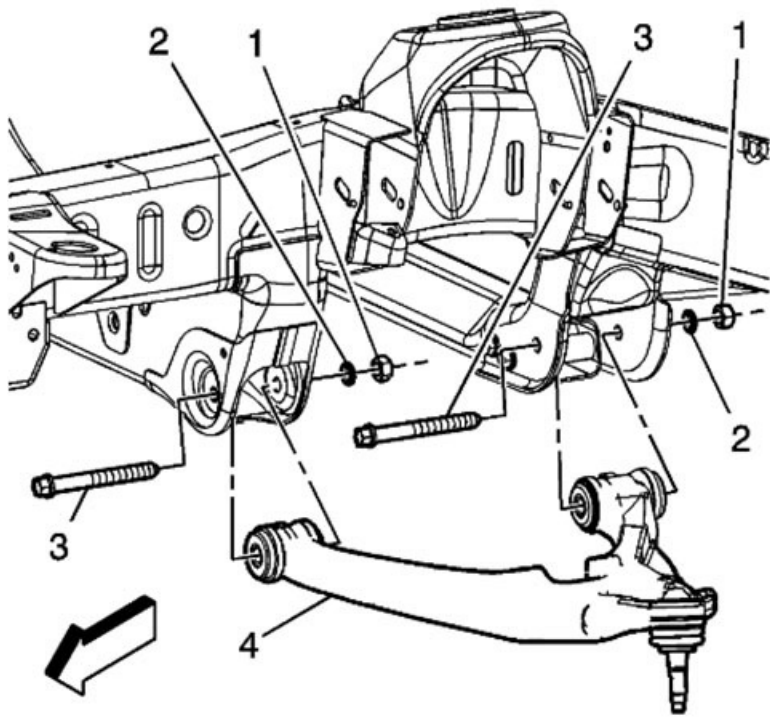


Correction 2

To correct this concern loosen and then re-torque the four front lower control arm mounting bolts/nuts:

Tighten 175 Nm (129 lb ft)

IMPORTANT: If the front lower control arms nuts and washers are removed, be aware the washers are directional washers and **MUST** be installed in the same direction as they were removed.



Warranty Information

Labor Operation:	Description:	Labor Time:
8080358	Re-torque Both The Frame Crossmember And Lower Control Arms Bolts	0.5 hr

Version History

Version	2
Modified	10/02/2017 To update the model year, condition, cause, recommendation and warranty sections, per Peter Joslyn



© 2016 General Motors. All Rights Reserved.