



Technical Bulletin

Model(s)	Year	Eng. Code	Trans. Code	VIN Range From	VIN Range To
All	2008-2015	2.0L CCTA, CBFA	All	All	All

Condition

20 17 01 March 6, 2017 **2031426** Supersedes T.B. V201503 dated July 28, 2015 to update parts table.

High Pressure Fuel Pump Diagnosis

Engine Crank, No Start after Long Periods without Driving. Engine may run rough, and or MIL-ON with DTC P0087-low fuel pressure stored in ECM Fault Memory.

Technical Background

Completing the GFF high pressure pump function test is essential to diagnose proper pump operation and to avoid unnecessary replacements.

Production Solution

N/A.

Service

The high pressure pump requires a sufficient supply of fuel pressure in order to operate properly.

- Check for sufficient pressure at the low pressure pump as described in the repair manual, located under the headings: Engine -> Engine Mechanical, Fuel Injection and Ignition -> Fuel Supply System -> Diagnosis and Testing -> Fuel Pump, Checking -> Fuel Pressure, Checking.

Is low pressure fuel pump within specifications?

YES: Continue to high pressure fuel pump test. (Guided fault finding provides a function test for the high pressure fuel pump. This test must be performed in order to properly diagnose the high pressure fuel pump.)

NO: Replace low pressure fuel pump and continue.



Note:

A completed high pressure fuel pump function test is required for reimbursement.



Technical Bulletin

Following completion of the function test:

If the actual fuel rail pressure is within ± 1 bar of specified fuel rail pressure [40 bar at idle (580 psi)], **DO NOT** replace the high pressure fuel pump. Continue to further diagnose the fuel system, this bulletin does not apply.

- With the engine running, check measure value blocks 106, 140 and 141 to confirm fuel rail pressure reads a minimum of 40 bar (580 psi).

The engine should be switched OFF and the key switched ON to perform the following procedure:

ODIS:

- Enter Diagnosis.
- Select “Test Plan”.
- Click “Select self test” button.
- Locate the test plan for the “N276 – Fuel Pressure Regulator Valve,” and attach the test to the test plan list (Figure 1a and Figure 1b).

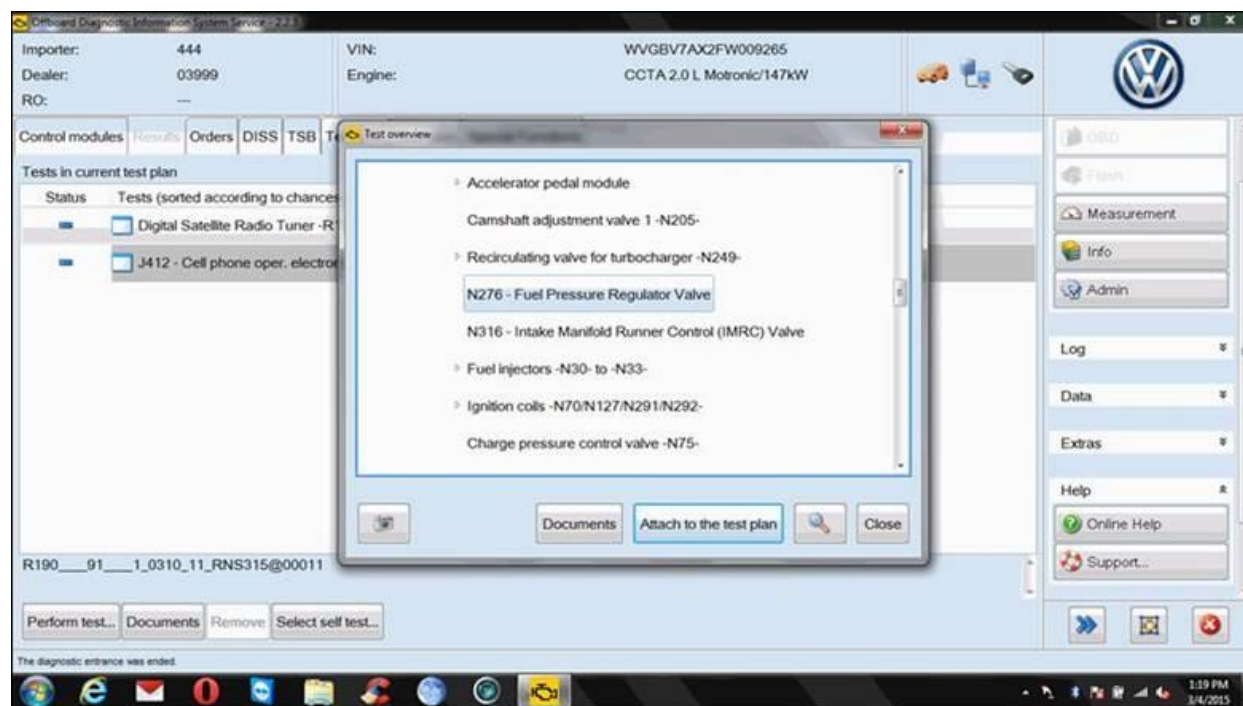


Figure 1a



Technical Bulletin

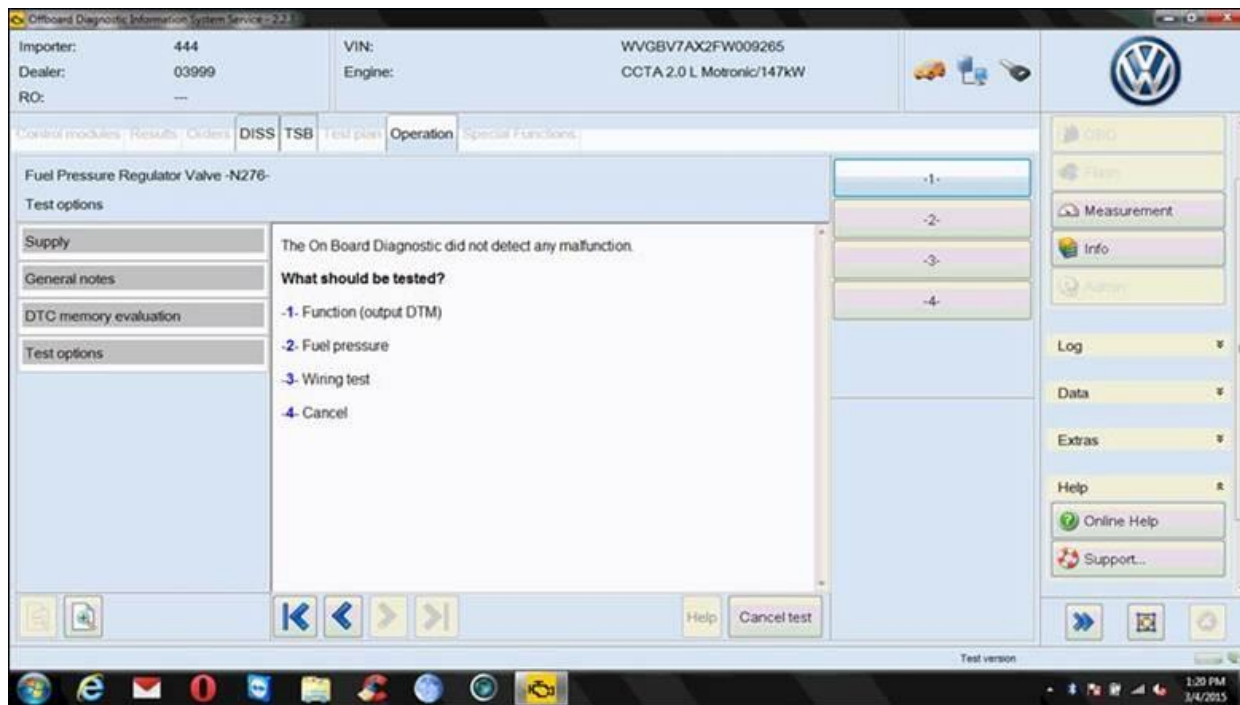


Figure 1b

- Close test overview window.



Technical Bulletin

- Highlight “N276 – Fuel Pressure Regulator Valve” test plan and select “Perform Test”, and select Complete/Continue (Figure 2).

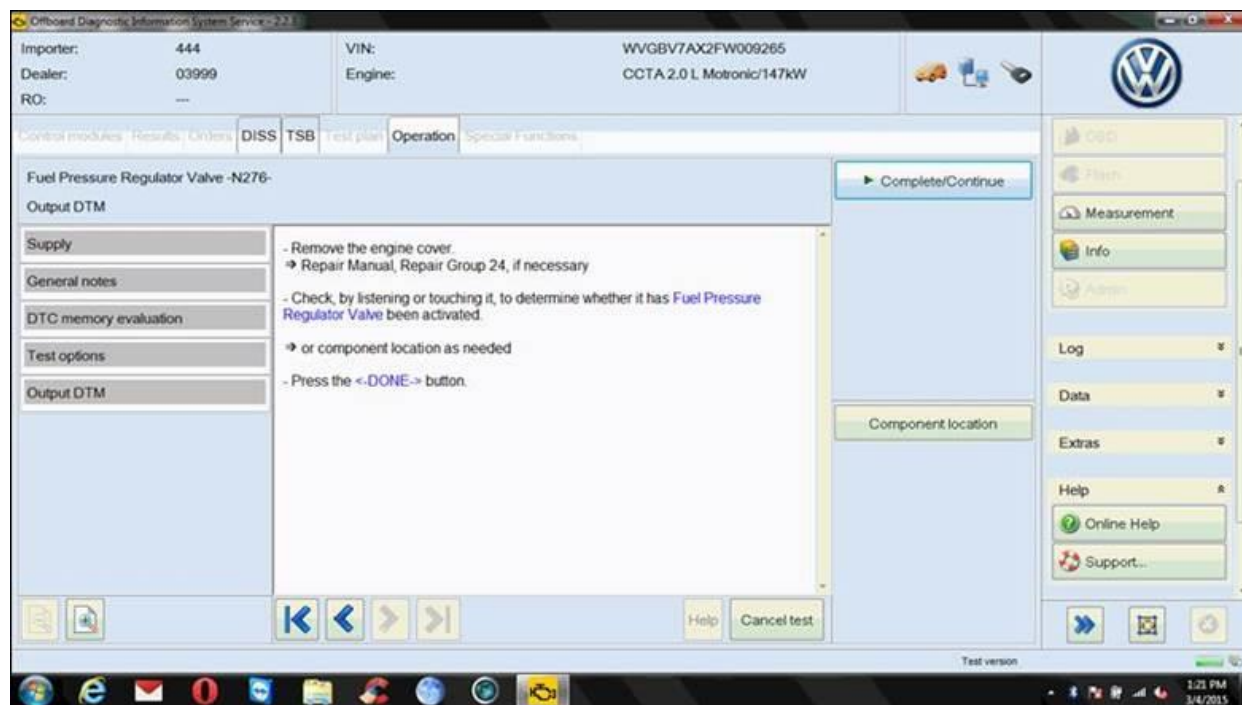


Figure 2



Technical Bulletin

- ODIS will run GFF test plan for the Fuel Pressure Regulator Valve (Figure 3).

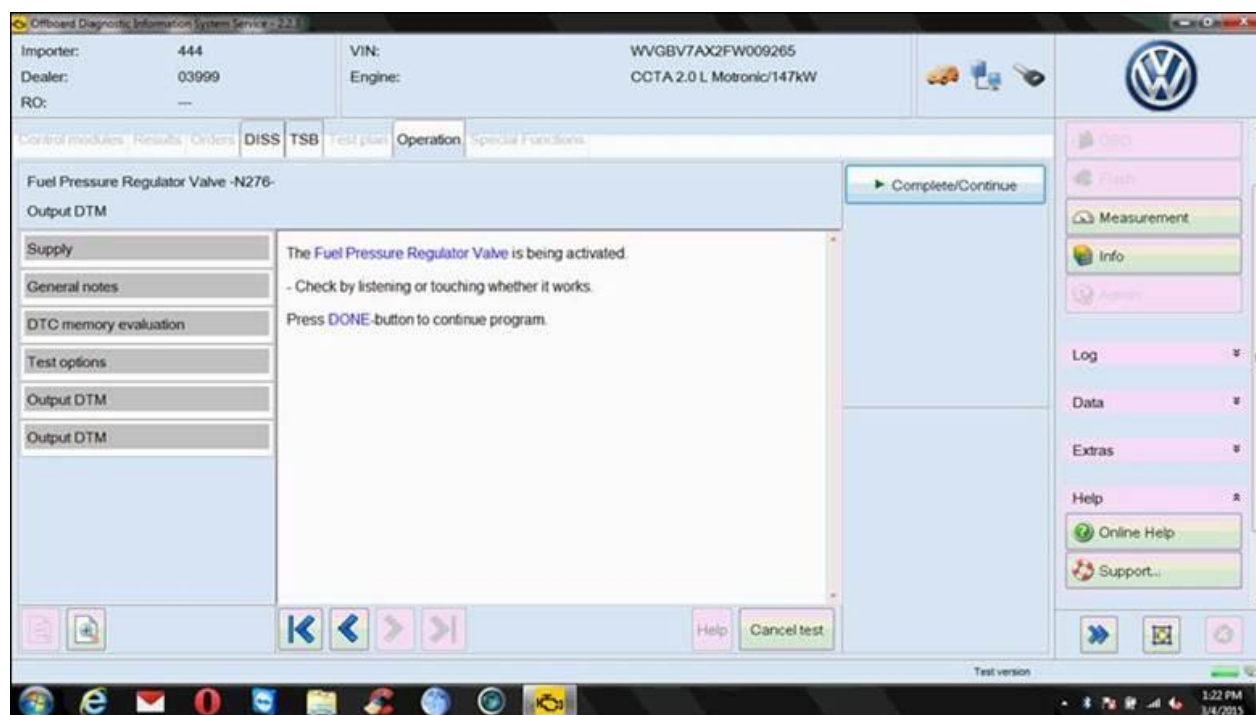


Figure 3



Technical Bulletin

- When the test starts to check the operation of the N276 pressure regulator, listen for an audible “click” sound coming from the High Pressure Fuel Pump. Once test is complete, answer the question provided (Figure 4).

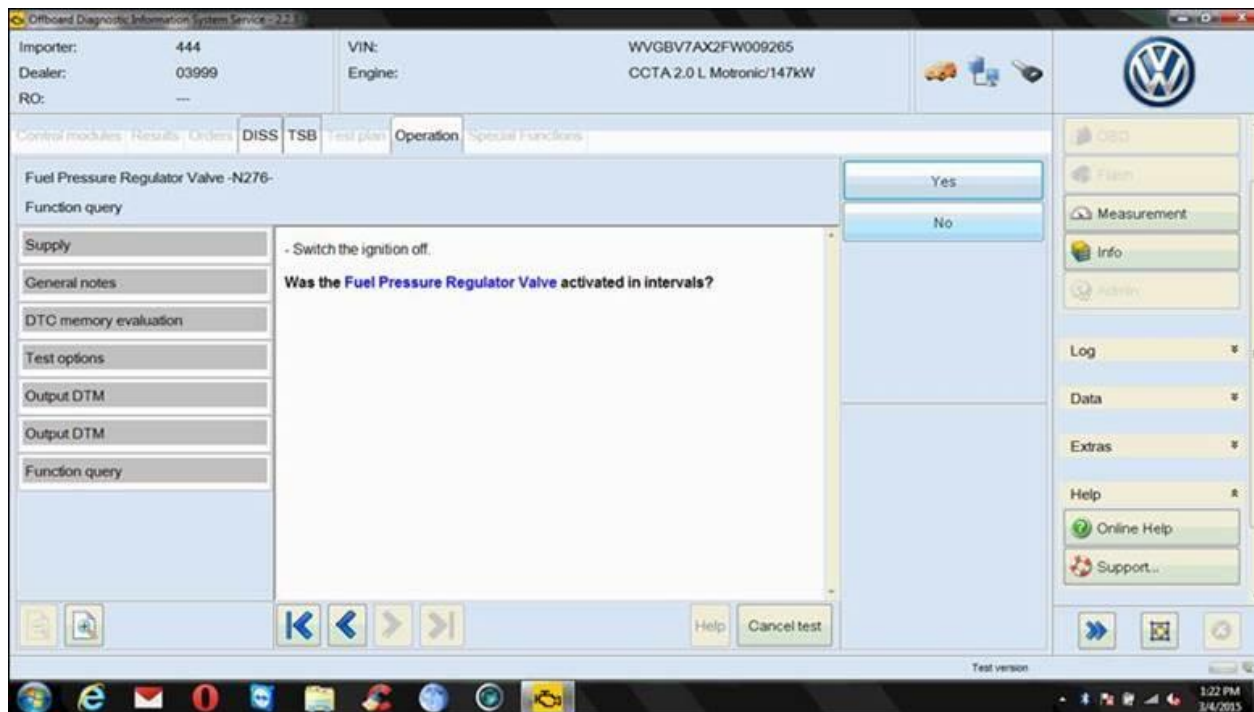


Figure 4



Tip:

The audible “click” sound may be better heard with hood open and the engine cover removed.

- If “click” noise is heard, **DO NOT** replace the high pressure fuel pump, this bulletin will not apply. Continue to further diagnose the fuel system.
- If “click” noise is **not** heard, and fuel rail pressure is below 10 bar, replace the high pressure fuel pump.
- Following completion of the test procedure, the vehicle should be driven with higher RPM’s (3000 – 5500) to confirm the fault does not return.



Technical Bulletin

Warranty

Low Pressure Fuel Pump Only

To determine if this procedure is covered under Warranty, always refer to the Warranty Policies and Procedures Manual ¹⁾					
Model(s)	Year(s)	Eng. Code(s)	Trans. Code(s)	VIN Range From	VIN Range To
All	2008-2015	2.0L CCTA, CBFA	All	All	All
SAGA Coding					
Claim Type:		Use applicable Claim Type ¹⁾			
Service Number:		Damage Code	HST	Damage Location (Depends on Service No.)	
2066		0010	--	Use applicable when indicated in Elsa (L/R)	
Parts Manufacturer		Eos, GTI, Beetle, Beetle Convertible, Jetta, CC, Passat		VDO	
		Tiguan		TJ5	
Tiguan					
Labor Operation ³⁾ : Remove and Install Low Pressure Fuel Pump			20661900 = 90 TU		
Eos/CC/GTI/Beetle/Beetle Convertible/Jetta/Passat					
Labor Operation ³⁾ : Remove and Install Low Pressure Fuel Pump			20661900 = 70 TU		
Causal Part: Low pressure fuel pump			See ETKA		
Diagnostic Time ⁴⁾					
GFF Time expenditure		01500000 = 30 TU max.		YES	



Technical Bulletin

Road Test	01210004 = 10 TU	YES
Technical Diagnosis- low pressure fuel pump test	01320000 = 60 TU max	YES
Claim Comment: Input "As per Technical Bulletin 2031426" in comment section of Warranty Claim.		
<p>1) Vehicle may be outside any Warranty in which case this Technical Bulletin is informational only</p> <p>2) Code per warranty vendor code policy.</p> <p>3) Labor Time Units (TUs) are subject to change with ELSA updates.</p> <p>4) Documentation required per Warranty Policies and Procedures Manual.</p>		

OR

High Pressure Fuel Pump Only

To determine if this procedure is covered under Warranty, always refer to the Warranty Policies and Procedures Manual ¹⁾					
Model(s)	Year(s)	Eng. Code(s)	Trans. Code(s)	VIN Range From	VIN Range To
Tiguan, Eos, CC, GTI, Beetle, Beetle Convertible, Jetta	2008-2015	2.0L CCTA, CBFA	All	All	All
SAGA Coding					
Claim Type:		Use applicable Claim Type ¹⁾			
Service Number:		Damage Code	HST	Damage Location (Depends on Service No.)	
2463		0010	--	Use applicable when indicated in Elsa (L/R)	
Parts Manufacturer		Tiguan, Eos, CC, Passat, GTI, Beetle, Beetle Convertible, Jetta		BPF	
Tiguan					



Technical Bulletin

Labor Operation ³⁾ : Remove and Install High Pressure Fuel Pump	24631940 = 90 TU	
Eos/GTI/CC/Passat/Jetta/Beetle/Beetle Convertible		
Labor Operation ³⁾ : Remove and Install High Pressure Fuel Pump	24631918 = 50 TU	
Causal Part: High pressure fuel pump	06H 127 025Q	
Diagnostic Time ⁴⁾		
GFF Time expenditure	01500000 = 30 TU max.	YES
Road Test	01210004 = 10 TU	YES
Technical Diagnosis- low and high pressure pump test	01320000 = 85 TU max	YES
Claim Comment: Input "As per Technical Bulletin 2031426" in comment section of Warranty Claim.		
<p>¹⁾ Vehicle may be outside any Warranty in which case this Technical Bulletin is informational only</p> <p>²⁾ Code per warranty vendor code policy.</p> <p>³⁾ Labor Time Units (TUs) are subject to change with ELSA updates.</p> <p>⁴⁾ Documentation required per Warranty Policies and Procedures Manual.</p>		



Technical Bulletin

Required Parts and Tools

Part Description	Part No:	Quantity
Adapter	06E127065G	2
Round Hd. Screw	N10700201	2
O-ring	WHT005184	1
High Pressure Fuel Pump	06H127025Q	1
OR		
Low Pressure Fuel Pump	See ETKA	1

Tool Description	Tool No:
Midtronics Battery Tester/Charger	InCharge 940 (INC-940) or GRX3000VAS
VAS Diagnostic Tool	VAS 6150/X & VAS 6160/X with ODIS Service with: current online updates



Technical Bulletin

Additional Information

All part and service references provided in this Technical Bulletin are subject to change and/or removal. Always check with your Parts Dept. and Repair Manuals for the latest information.

Document Control Revision Table			
Instance Number	Published Date	Version Number	Reason For Update
2031426/11	3/6/17	V201701	Update parts table.
2031426/10	7/28/15	V201503	Revised to update Eos/GTI High Pressure Fuel Pump Labor Operation Number and Time Units according to labor time guide.
2031426/1	11/21/12	V201202	Original publication.