



Technical Bulletin

| Model(s) | Year | Eng. Code | Trans. Code | VIN Range From | VIN Range To |
|----------------------------|------|-----------|-------------|----------------|--------------|
| Beetle, Beetle Convertible | 2016 | All | All | All | All |

Condition

91 17 02 March 30, 2017 2047362

MIB2 – Component Protection Error on Radio Display

The customer may state that an error message appears on the radio display that reads “Component protection is active”. This concern may also affect operation of the radio and may be intermittent/sporadic.

Technical Background

This procedure corrects the concern(s) specified below by updating the Instrument Cluster to the latest software level **0407**.

Production Solution

Not applicable.

Service



Note:

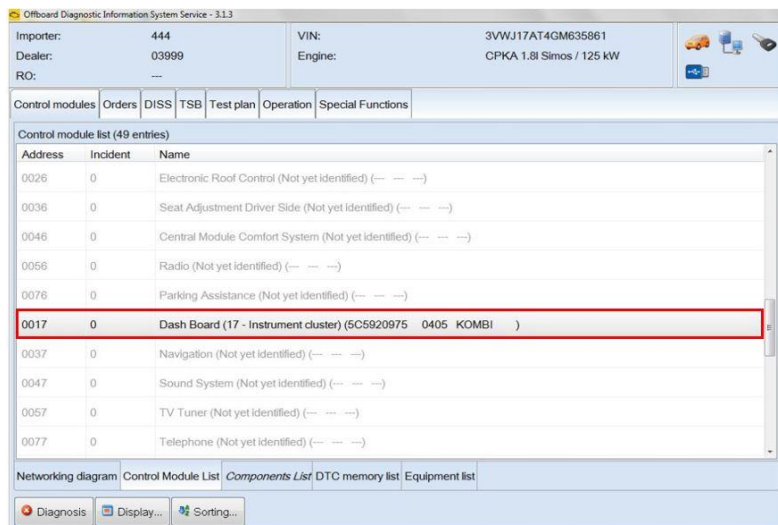
This technical bulletin must be read in its entirety before attempting the software update.

Software Update Procedure

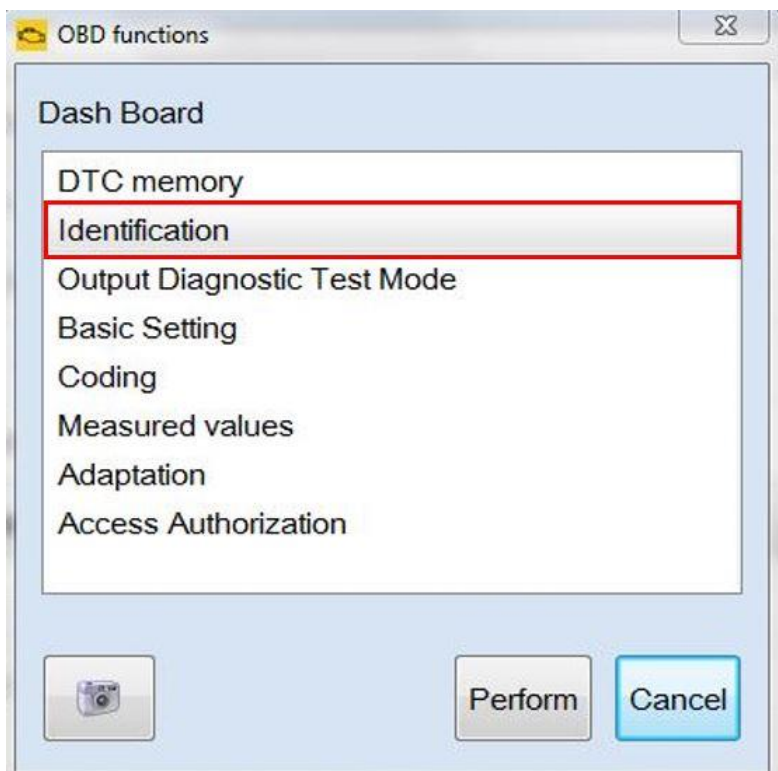
- Connect Midtronics InCharge 940 (INC 940) or GRX3000VAS Tester/Charger to the vehicle’s battery.
- Switch the ignition to the ON position.
- Connect the diagnostic tester to the vehicle’s DLC (Data Link Connector).
- Launch the ODIS application.
- Begin Guided Fault Finding (GFF) by clicking on “Starting Diagnosis”.
- Allow GFF to complete interrogation of the vehicle’s control modules.



Technical Bulletin



- Once the GFF interrogation of the control modules has been completed, click on the “Control Modules” tab and scroll down the list of modules to locate “Dash Board (17 – Instrument cluster)”.
- Right click on “Dash Board (17 – Instrument Cluster)” and click on “Control Module OBD” from the drop down menu.



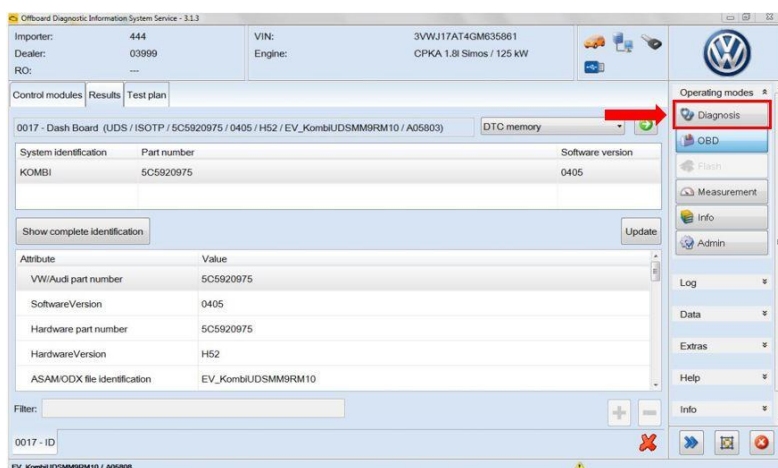
- Select “Identification” from the OBD functions pop up menu.
- Click “Perform”.



Technical Bulletin



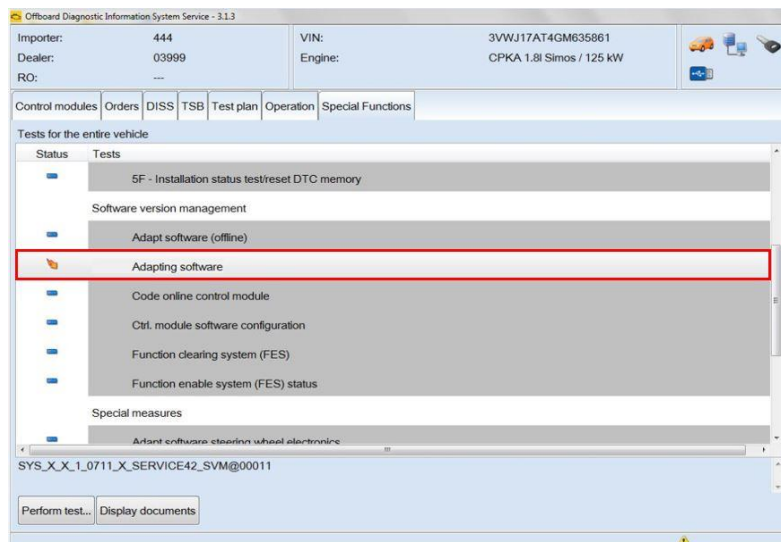
- Once the identification screen populates, check the “Software version” in the upper right hand side of the screen.
- If the currently installed “Software version” is lower than **0407**, proceed with this Technical Bulletin.
- If the currently installed “Software version” is greater than or equal to **0407**, this work procedure does not apply.



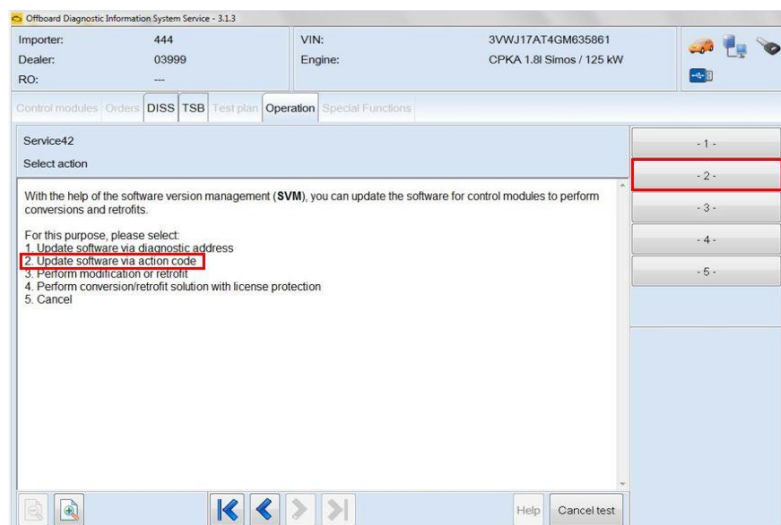
- Return to GFF by clicking the “Diagnosis” button in the upper right hand side of the screen.



Technical Bulletin



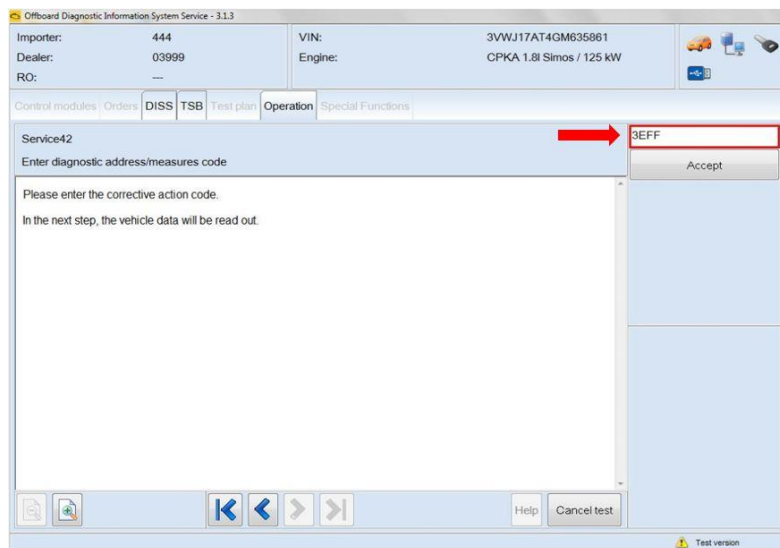
- Click on the “Special Functions” tab.
- Select “Adapt software”.
- Click “Perform Test”.



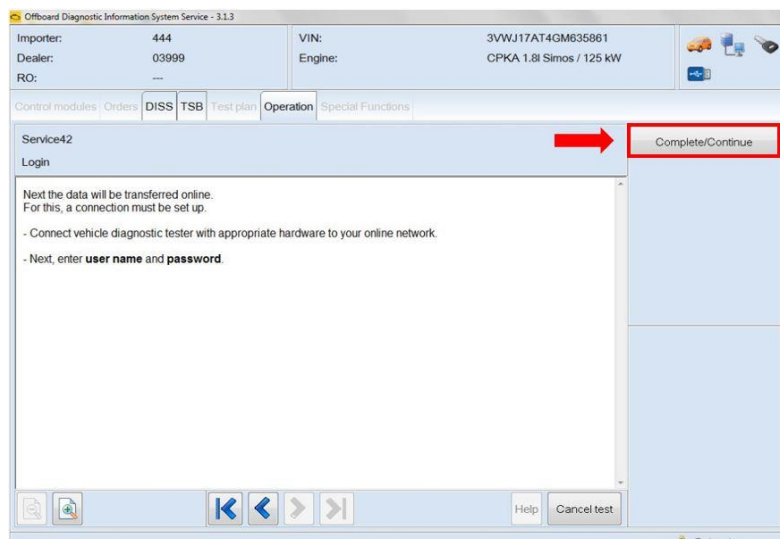
- Select option 2, “Update software via action code”.
- Enter Geko ID whenever prompted throughout the update process.



Technical Bulletin



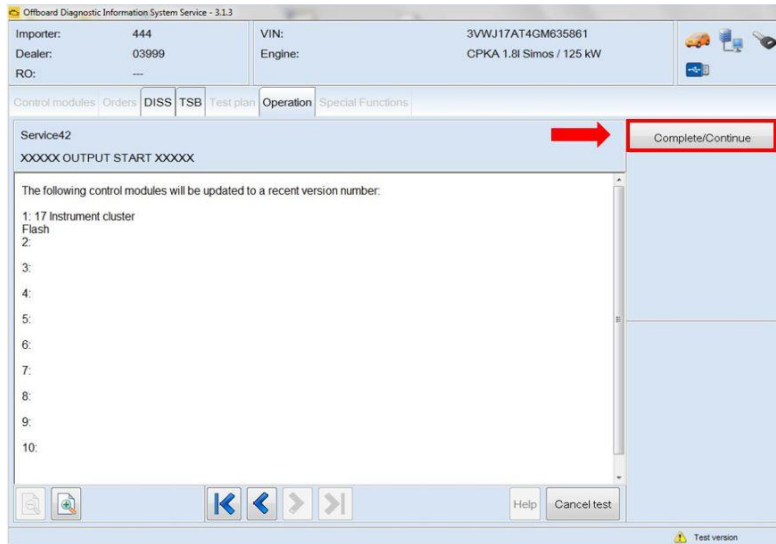
- Enter SVM code **3EFF** when prompted.
- Click “Accept”.



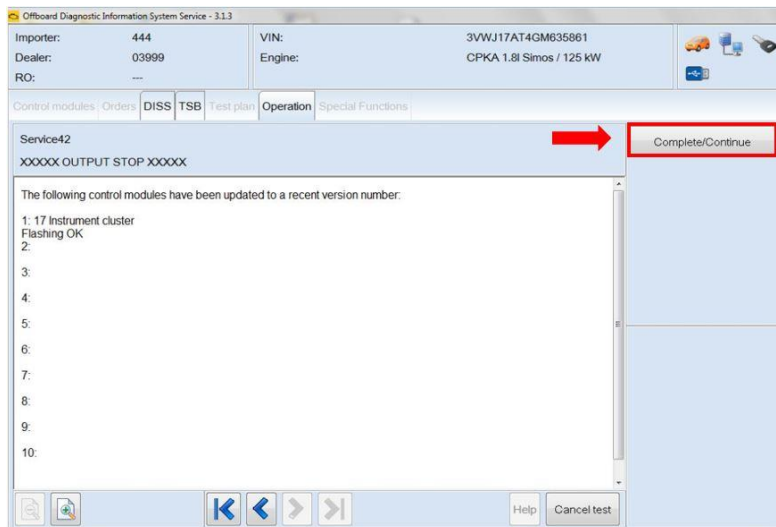
- Press “Complete/Continue”.



Technical Bulletin



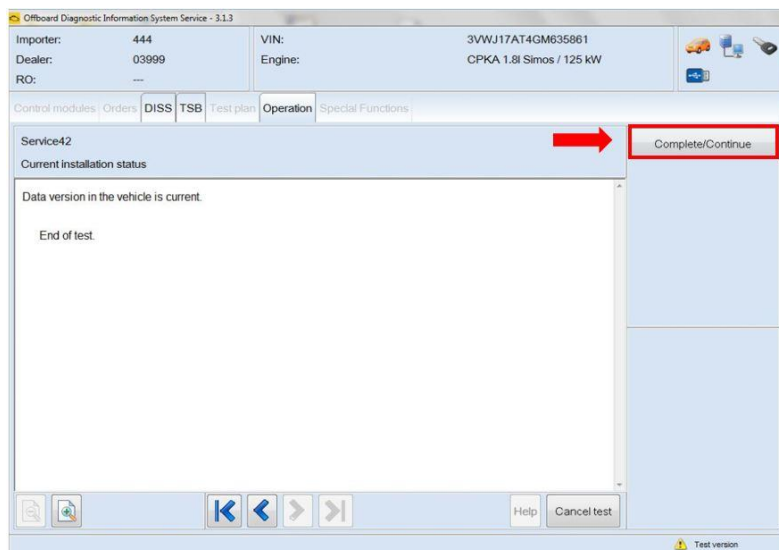
- Press “Complete/Continue”.
- The software update will now take place.
- Follow all prompts on the screen during the update process to allow the update to complete.



- After the update has been performed, click “Complete/Continue” in the upper right hand side of the screen.



Technical Bulletin



- Click “Complete/Continue” at the end of test.
- The update process is now complete.



Technical Bulletin

Warranty

| To determine if this procedure is covered under Warranty, always refer to the Warranty Policies and Procedures Manual ¹⁾ | | | | | |
|--|--|--------------|----------------|---|--------------|
| Model(s) | Year(s) | Eng. Code(s) | Trans. Code(s) | VIN Range From | VIN Range To |
| Beetle, Beetle Convertible | 2016 | All | All | All | All |
| SAGA Coding | | | | | |
| Claim Type: | Use applicable Claim Type ¹⁾ | | | | |
| Service Number: | Damage Code | HST | | Damage Location (Depends on Service No.) | |
| 9025 | 0039 | -- | | Use applicable when indicated in Elsa (L/R) | |
| Parts Manufacturer | | | | MM5 ²⁾ | |
| Labor Operation ³⁾ : Charge Battery | 27068950 = 10 TU | | | | |
| Labor Operation ³⁾ : Update Programming | See GFF Time expenditure | | | | |
| Causal Part: Select Labor Operation | 01500000 | | | | |
| Diagnostic Time ⁴⁾ | | | | | |
| GFF Time expenditure | 01500000 = actual GFF print out - 50 T.U. max. | | | YES | |
| Road Test | 01210002 = 00 TU 01210004 = 00 TU | | | NO | |
| Technical Diagnosis | 01320000 = 00 TU max. | | | NO | |
| Claim Comment: Input "As per Technical Bulletin 2047362" in comment section of Warranty Claim. | | | | | |
| ¹⁾ Vehicle may be outside any Warranty in which case this Technical Bulletin is informational only ²⁾ Code per warranty vendor code policy. ³⁾ Labor Time Units (TUs) are subject to change with ELSA updates. ⁴⁾ Documentation required per Warranty Policies and Procedures Manual. | | | | | |



Technical Bulletin

Required Parts and Tools

No special parts required.

| Tool Description | Tool No: |
|-----------------------------------|--|
| Midtronics Battery Tester/Charger | InCharge 940 (INC-940) Or GRX3000VAS |
| VAS Diagnostic Tool | VAS 6150/X & VAS 6160/X and ODIS Service with: current online updates |

Additional Information

All part and service references provided in this Technical Bulletin are subject to change and/or removal. Always check with your Parts Dept. and Repair Manuals for the latest information.

| Document Control Revision Table | | | |
|---------------------------------|----------------|----------------|-----------------------|
| Instance Number | Published Date | Version Number | Reason For Update |
| 2047362/1 | 3/30/17 | V911702 | Original publication. |