

Special Bulletin

SP17-308A

Date	Expiration	Release	Page
03.2017	03.2019	2	1(6)

NYCT COMPRESSOR DOOR UPPER HINGE REPLACEMENT

Prevost vehicles

REVISION : A THIS BULLETIN SUPERSEDES PREVIOUS VERSION.
10-13-2017 Lower hinge replacement – Kit & procedure removed from bulletin.

DESCRIPTION

On the vehicles affected by this bulletin, the upper compressor door hinge must be replaced by a new improved hinge providing better door retention.

MODEL YEAR(S) AND VEHICLES INVOLVED

NOTICE TO SERVICE CENTERS		
<i>Verify vehicle eligibility by checking warranty bulletin status with SAP or via ONLINE WARRANTY SYSTEM available on Service / Warranty tab of Prevost website.</i>		
Model	VIN	Fleet Number
X3-45 Commuter Model Year : 2012	From: 2PCG33495 CC735053 up to 2PCG33495 CC735232 incl.	From 2400 up to 2489, incl.
This bulletin does not necessarily apply to all the above-mentioned vehicles, some vehicles may have been modified before delivery. The owners of the vehicles affected by this bulletin will be advised by a letter indicating the Vehicle Identification Number (VIN) of each vehicle concerned.		

MATERIAL NEEDED

Order KIT **SP16-320A** which contains the following parts:

Part No.	Description	Qty
280504	Upper Hinge (door)	1
280549	Upper hinge (frame)	1
280610	Upper Hinge Spacer (frame)	1
5001833	Washer, Bellville SS 6.66x17.4x1.27	4
502622	Screw Cap Hex SS NSS M6 X 1.0 X 20	2
5000310	Screw Cap Hex SS NSS M6 X 1.0 X 40	2
284607	Door Hinge Bushing (upper & lower)	1

Date	Expiration	Release	Page
03.2017	03.2019	2	2(6)

NOTE

Material can be obtained through regular channels.

PROCEDURE



DANGER

Park vehicle safely, apply parking brake, stop engine. Prior to working on the vehicle, set the ignition switch to the OFF position and trip the main circuit breakers equipped with a trip button. *On Commuter type vehicles, set the battery master switch (master cut-out) to the OFF position.*

1. Fully open the vehicle compressor door (rear, curb side of vehicle Fig.1).

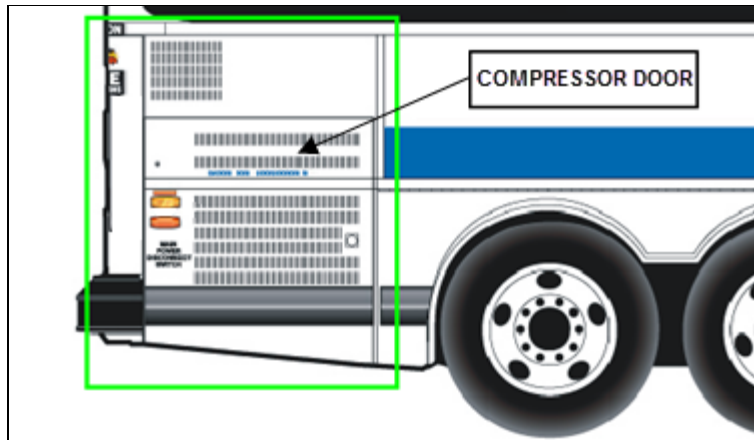


FIG.1 VEHICLE COMPRESSOR DOOR

2. Support the door at its lower edge without applying upward pressure. A scissor jack (or equivalent lifting equipment) and a V shaped wood block are recommended (Fig.2).



FIG.2 SUPPORTING THE DOOR

Date	Expiration	Release	Page
03.2017	03.2019	2	3(6)

3. Unscrew and remove both parts of the upper hinge (4X M6 bolts at frame and door). Discard all parts and hardware (Fig.3).



FIG.3 UPPER HINGE REMOVAL

4. Install the new upper hinge (parts **280504**, **280549** & **280610** in kit Fig.4) making sure that:
 - New M6 bolts and washers (**5000310** & **5001833**) are used at the upper (vehicle structure) mounting points (Fig.4).
 - New M6 bolts (**502622** & **5001833**) are used at the door mounting points (Fig.4).
 - A new plastic bushing **284607** is installed at the pivot point (Fig.5).
 - The door is fully supported by the *lower hinge* and not slightly lifted-up by the lift table so there is no gap between parts at the lower pivot point (Fig.6).
 - There is no gap between the upper and lower part at the pivot point of the upper hinge (Fig.7).
 - The four M6 bolts are torqued to **68 lb-in** (apply blue Loctite 242 or equivalent medium strength thread locker on all fastener threads (Fig.8)).

Date	Expiration	Release	Page
03.2017	03.2019	2	4(6)

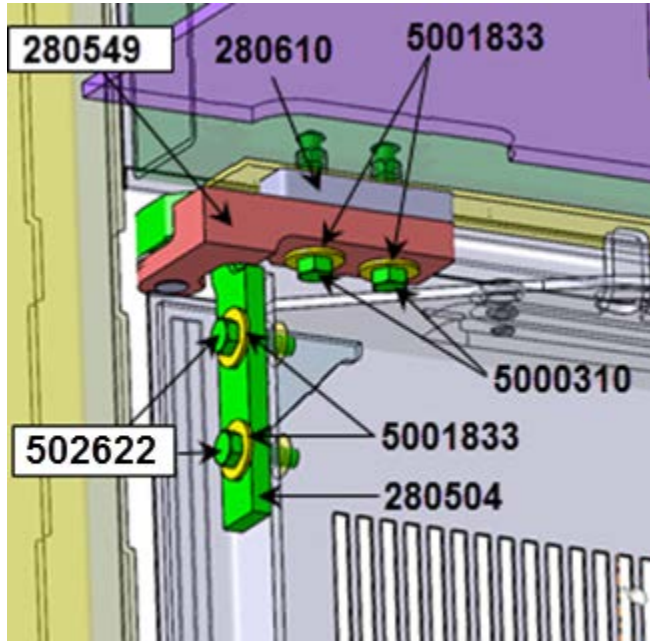


FIG.4 NEW UPPER HINGE

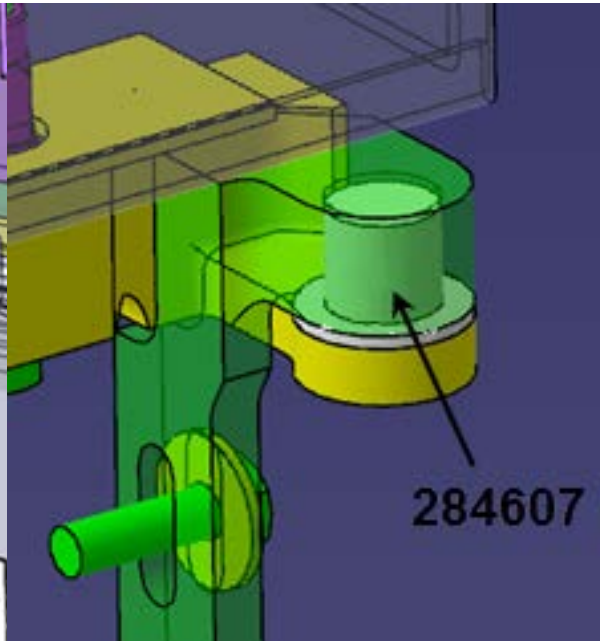


FIG.5 BUSHING



FIG.6 LOWER HINGE SUPPORT

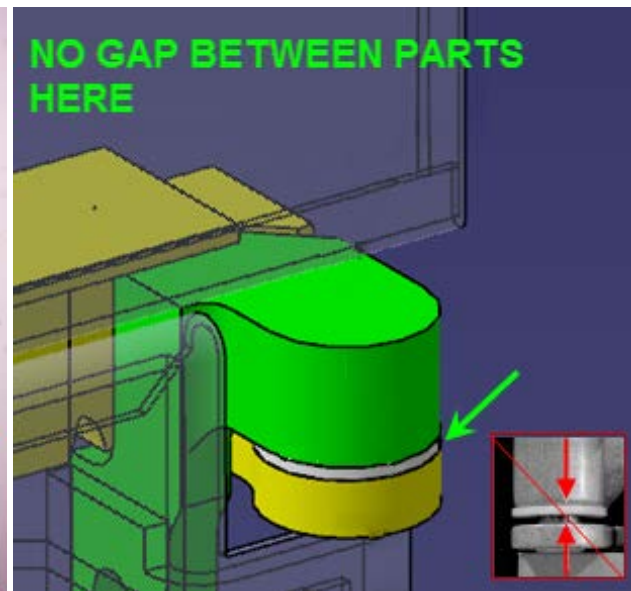


FIG.7 NO GAP – UPPER HINGE

Date	Expiration	Release	Page
03.2017	03.2019	2	5(6)

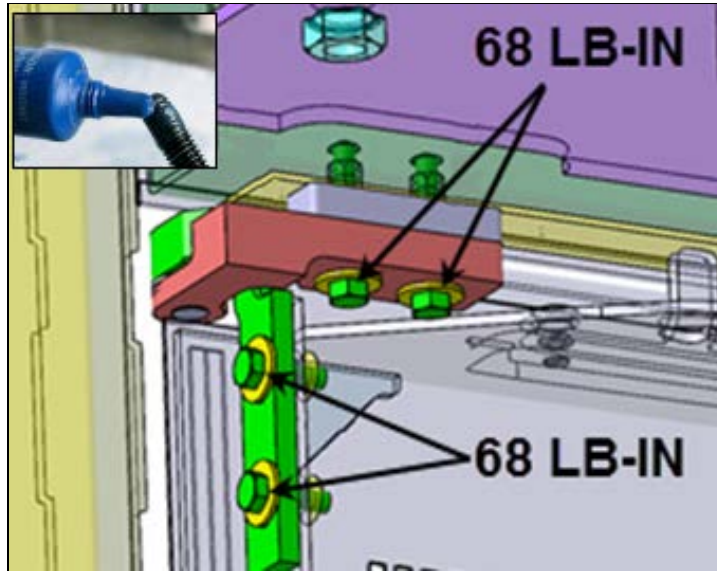


FIG.8 TIGHTENING TORQUE- UPPER HINGE

5. Remove door support installed at step 2 and open and close the door several times to make sure it is working properly, check door top and side adjustments. There should be an even (parallel) gap of at least 0.080" (2mm) at the top of the door and a 0.177" +/- 0.060" (4.5 +/-1.5 mm) gap between the door and the vehicle rear fender (Fig.9).

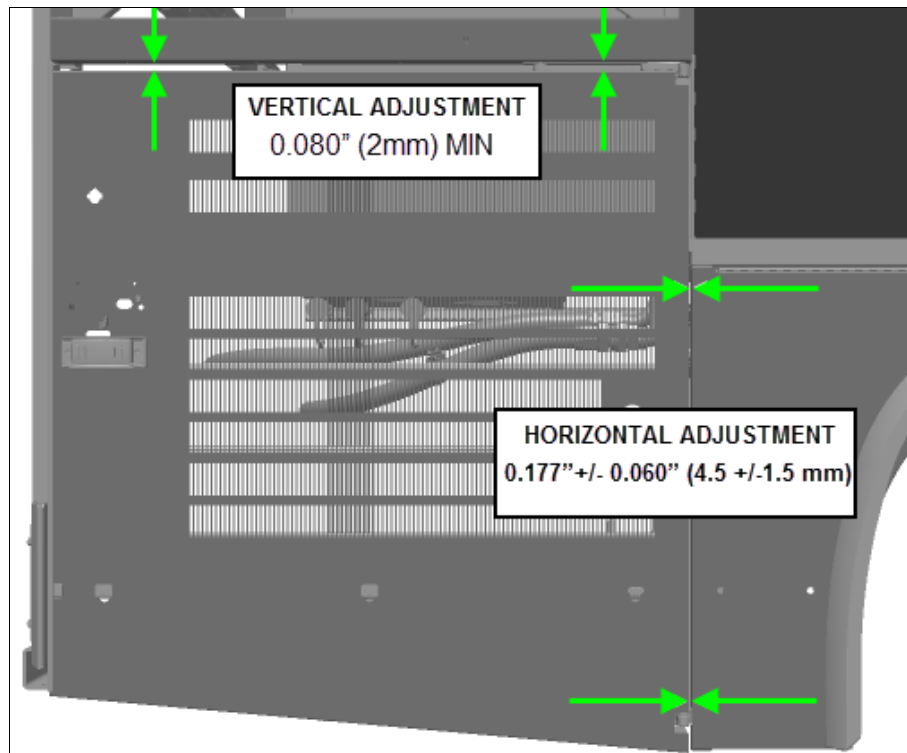


FIG.9 COMPRESSOR DOOR HORIZONTAL & VERTICAL GAPS

Date	Expiration	Release	Page
03.2017	03.2019	2	6(6)

NOTE

If gap is out of spec the compressor door may be adjusted for proper fit by untightening hinge bolts:

- *Loosen the bolts holding the hinge to the vehicle structure to shift the door horizontally LEFT or RIGHT.*
- *Loosen the bolts holding the hinge to the door frame to shift the door vertically UP or DOWN.*

6. Reset main circuit breakers and set the battery master switch (master cut-out) to the ON position.

PARTS / WASTE DISPOSAL

Return replaced parts to Prevest with A.F.A. for full reimbursement.
Discard waste according to applicable environmental regulations (Municipal/State[Prov.]/ Federal)

ESTIMATED TIME

The time required to perform this special bulletin is approximately 1/2 (0.5) hour.

OTHER

VBC Bulletin	N/A
Fail Code	18.05
Defect Code	09
Syst. Cond	B
Causal Part	288945

Access all our Service Bulletins on
<http://techpub.prevestcar.com/en/>

or scan the QR-Code with your smart phone.

E-mail us at technicalpublications_prev@volvo.com and type
"ADD" in the subject to receive our warranty bulletins by e-mail.



Prevest engages in a continuous program of testing and evaluating to provide the best possible product. Prevest, however, is not committed to, or liable for updating existing products.