



## Technical Information Bulletin

---

**13-047**



### **Section**

Brakes - 13

---

### **Subject**

K270/K370 Foot Brake Valve Nut Retorque

---

### **Release Date**

10/25/2017

---

### **Condition**

The lower nuts of the foot brake valve may not have been tightened correctly.

---

### **Chassis Affected**

22 chassis (all U.S. and no Canada), K270/K370 MY2017 vehicles built from 01/22/2016 through 02/12/2016. See the attached chassis list for specific chassis.

---

### **Action**

#### **CAMPAIGN**

Service all chassis affected that enter your dealership, even if the customer has no issue with the chassis.

1. Review the attached chassis list for your dealer code and schedule your customer(s) for service if their chassis is on the list.
2. Review the DWWC or SIR for "Complete" next to the "13047" campaign code prior to performing this repair.
3. Follow the procedures below to retorque the foot brake valve nuts.
4. The chassis listed in this bulletin require the repair included in Federal Recall [17KWE K270/K370 Front Axle Sway Bar Links](#). Review SIR to ensure the recall has been completed before releasing the vehicle.

This campaign can be performed at any time convenient for the customer (for example: during next scheduled maintenance interval).

---

### **Warranty**

Through Standard Warranty (excludes Extended Warranty) or for repairs completed by 11/01/2018, whichever is greater, Kenworth will pay for parts at dealer net plus applicable mark-up and labor:

- 0.3 hours labor to torque the foot brake valve nuts. Use Quick Claim code 13-047.
- File an additional claim for extraordinary circumstances. A quick claim for standard labor must be filed first.

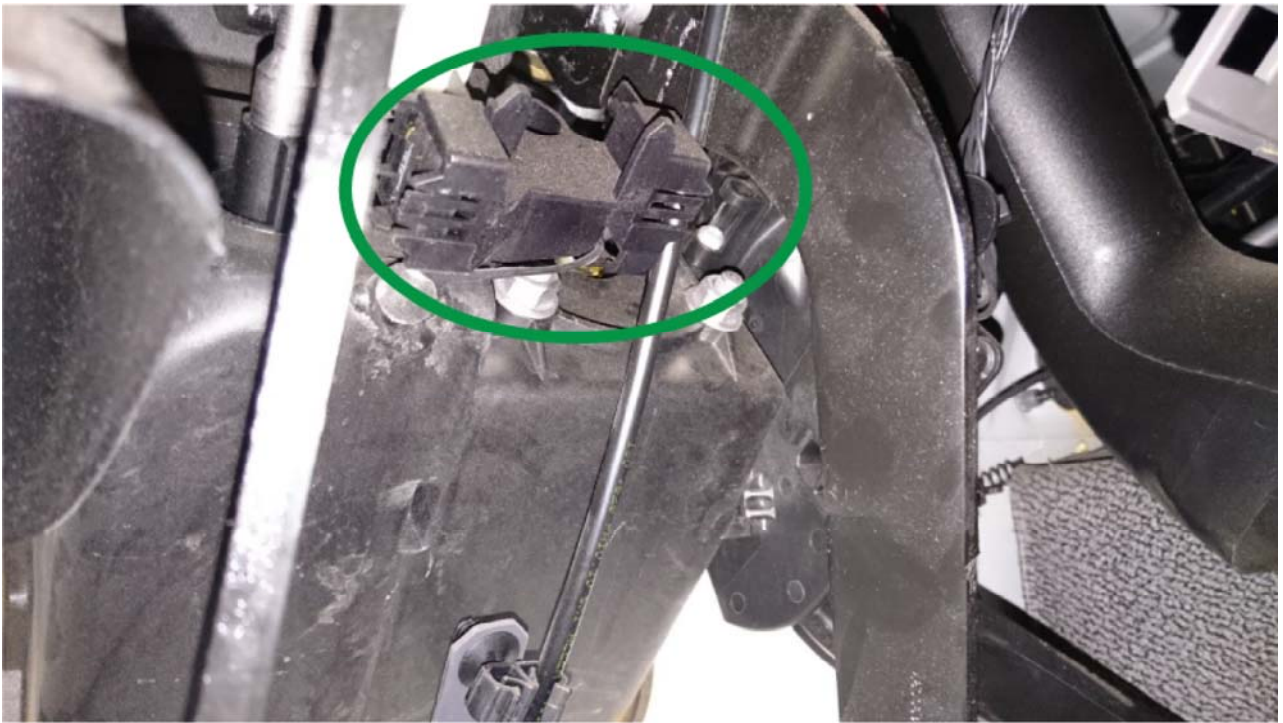
CLAIM CODING			
Failure Location:	013-005-001	Work Accomplished:	10
Failure Type:	240	Responsibility Code:	05
SRT Code:	013-XXX	Claim Type:	C
Vendor Code:	12310DL		

## **Procedure**

1. Remove the lower steering column cover(s).



2. For vehicles with a manual gearbox, remove the clutch pedal switch.



3. Torque the foot brake valve nuts to 16 lb-ft (22·Nm).



---

## **Attachments**

 [Chassis List](#)

---

Authored by: OF

---

Access to PACCAR's Enterprise Portal is provided as a benefit of doing business with PACCAR. All applications and content accessed through this system are confidential and proprietary and the property of PACCAR Inc and its suppliers, and must be kept strictly confidential pursuant to the contract licensing such access. Disclosure, publication, release or distribution of any material found on PACCAR systems to any person other than employees with a need to know such information is strictly prohibited. All activity on this system is monitored. If PACCAR suspects or discovers any unauthorized activity, access may be immediately terminated without prior notification. Violators may be subject to legal action.

© Copyright 2017 PACCAR Inc. All rights reserved. We welcome your [feedback](#) on this page. For technical questions or concerns about this page, please contact the [DealerNet Webmaster](#).