



Technical Bulletin

Model(s)	Year	Eng. Code	Trans. Code	VIN Range From	VIN Range To
All	2006-2008	2.0T (BPY)	All	All	All
All	2009-2016	2.0T (CCTA/CBFA)	All	All	All

Condition

24 17 01 January 04, 2017 2045138

MIL ON DTCs P2004, P2014 and or P2015 Stored in ECM Fault Memory

DTC	Description
P2004	Intake Manifold Flap for Air Flow Control Bank 1 Stuck Closed
P2014	Intake Manifold Runner Position Sensor/Switch Circuit
P2015	Sender for Intake Manifold Flap Position/Air Flow Control, Implausible Signal



Technical Bulletin

Technical Background

The intake manifold flap can separate internally and will not operate correctly with the regulator valve. See Figure 1. and 2. for an example of a damaged flap disassembled.

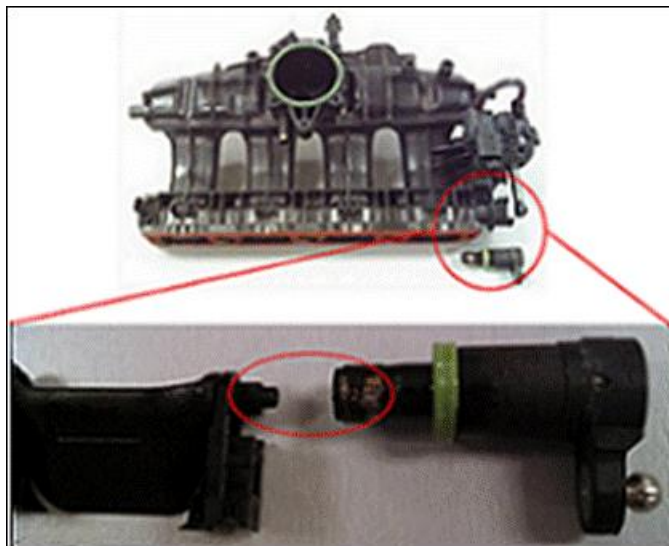


Figure 1.



Figure 2.



Technical Bulletin

Production Solution

Informational only.

Service

Procedure:

Check intake manifold flaps and if necessary replace intake manifold.



Note:

Before beginning repair, diagnose any faults using guided fault finding.

- Remove the engine cover. See Repair Group 10 Engine Assembly in Elsa.
- Move the carrier plate by hand in an axial direction (Figure 3, red arrow) to check if the carrier plate can be pulled out.

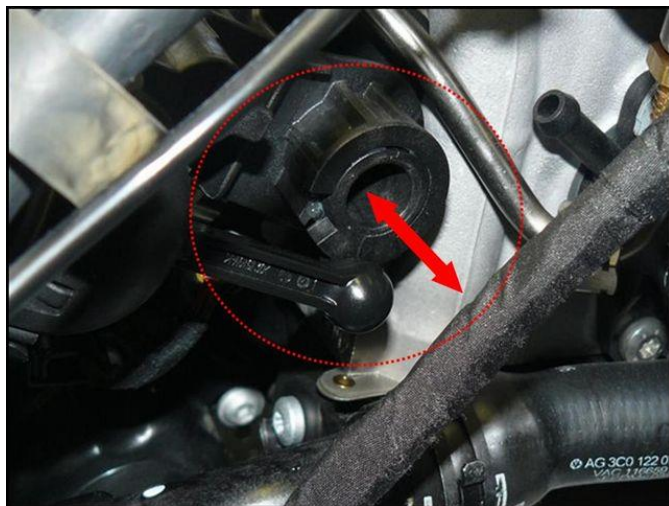


Figure 3.

If the carrier plate can be pulled out, the flap has separated and the intake manifold must be replaced. See Repair Group 24 Multiport Fuel Injection in Elsa.



Technical Bulletin

If the carrier plate **cannot** be pulled out, perform the following procedure:

- Check the diagnostic limits of the flap with the ODIS tester.
- Under Motor, select Guided Functions (Figure 4).



Figure 4

- Select Reading measured values, engine (Figure 5).

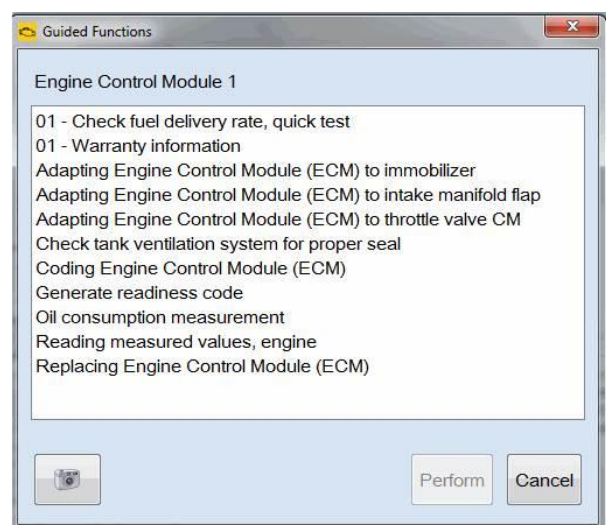


Figure 5



Technical Bulletin

- Select the following measured values from the list and select start update to set the adaptation (figure 6).



Figure 6

If the adaptation is not successful, the flap stop is worn internally, the intake manifold also has to be replaced. See Repair Group 24 Multiport Fuel Injection in Elsa.



Technical Bulletin

Warranty

To determine if this procedure is covered under Warranty, always refer to the Warranty Policies and Procedures Manual ¹⁾					
Model(s)	Year(s)	Eng. Code(s)	Trans. Code(s)	VIN Range From	VIN Range To
All	2006-2008	2.0T (BPY)	All	All	All
All	2009-2016	2.0T (CCTA/CBFA)	All	All	All
SAGA Coding					
Claim Type:	Use applicable Claim Type ¹⁾				
Service Number:	Damage Code	HST		Damage Location (Depends on Service No.)	
2447	0010	--		Use applicable when indicated in Elsa (L/R)	
Parts Manufacturer	All			MHO ²⁾	
Labor Operation ³⁾ : Charge Battery			27068950 = 10 TU		
Labor Operation ³⁾ : Remove and Install Intake Manifold			244719XX = See Elsa (if applicable)		
Labor Operation ³⁾ : Intake Manifold Replace			244755XX = See Elsa (if applicable)		
Labor Operation ³⁾ : Install Fuel Injector Seals			244020XX = See Elsa (if applicable)		
Causal Part: Intake Manifold			XXX 133 XXX X (BPY) XXX 133 XXX XX (CCTA, CBFA)		
Diagnostic Time ⁴⁾					
GFF Time expenditure	01500000 = Actual GFF print out			YES	



Technical Bulletin

Road Test	01210004 = 10 TU	YES
Technical Diagnosis	01320000 = 10 TU max.	YES
Claim Comment: Input "As per Technical Bulletin 2045138" in comment section of Warranty Claim.		
<ol style="list-style-type: none"> ¹⁾ Vehicle may be outside any Warranty in which case this Technical Bulletin is informational only ²⁾ Code per warranty vendor code policy. ³⁾ Labor Time Units (TUs) are subject to change with ELSA updates. ⁴⁾ Documentation required per Warranty Policies and Procedures Manual. 		

Required Parts and Tools

Part No:	Part Description	Quantity
06F 133 201 P (BPY)	Intake Manifold	1 (If Necessary)
06D 998 907 (BPY)	Seals	4 (If Necessary)
06F 129 717 D (BPY)	Gasket	1 (If Necessary)
06J 133 201 BH (CCTA/CBFA)	Intake Manifold	1 (If Necessary)
06J 998 907 B (CCTA/CBFA)	Seals	4 (If Necessary)
06F 129 717 D (CCTA/CBFA)	Gasket	1 (If Necessary)

Tool Description	Tool No:
Midtronics Battery Tester/Charger	InCharge 940 (INC-940) or GRX3000VAS
VAS Diagnostic Tool	VAS 6150/X & VAS 6160/X and ODIS Service with: current online updates



Technical Bulletin

Additional Information

All part and service references provided in this Technical Bulletin are subject to change and/or removal. Always check with your Parts Dept. and Repair Manuals for the latest information.

Document Control Revision Table			
Instance Number	Published Date	Version Number	Reason For Update
2045138/1	January 4, 2016	V241701	Original publication.