

Noise Symptom - Sliding Roof Creaking (for I-no. 651/653): Reworking sliding roof (SY 10/15)

General information

Model Line: **911 Carrera (991)**

Model Year: **As of 2012 up to 2015**

Equipment: Sliding roof (I-no. 651/653)

Subject: **Seal on sliding roof**

Symptom: **Creaking noises can be heard while driving on vehicles with the following equipment:**

Electric slide/tilt roof, **metal (I-no. 651)**

Electric slide/tilt roof, **glass (I-no. 653)**

Cause: Noises can be caused by excessive relative movements between the individual components.

Remedial Action: Rework sliding roof seal.

Tools and Materials: Porsche grease: 999.917.557.00 ⇒ Grease ("Osixo®" – Anti Squeak — **Use ONLY for metal roof**)

Porsche grease: 000.043.303.39 ⇒ Grease ("Carbaflo®" — **Use ONLY for glass roof**)

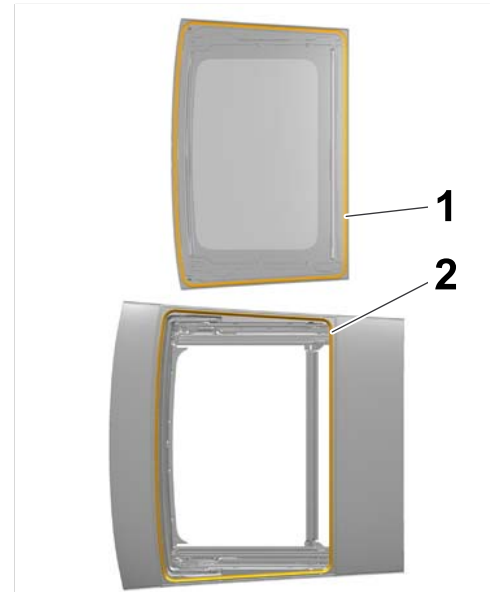
- Isopropanol

- Disposable gloves

- Paper towels

Reworking electric slide/tilt roof, metal (I-no. 651)

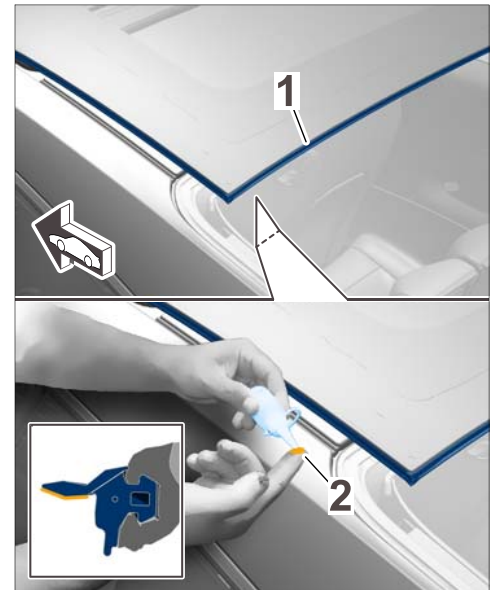
- 1 To eliminate creaking noises, treat the seal ⇒ *Seal and contact surface - 1* - all around with Porsche sliding compound.
 - 1.1 Open sliding roof.

*Seal and contact surface*

- 1.2 Protect the interior with a protective cover (e.g. paper towels). ⇒ *Fitting protective cover*

*Fitting protective cover*

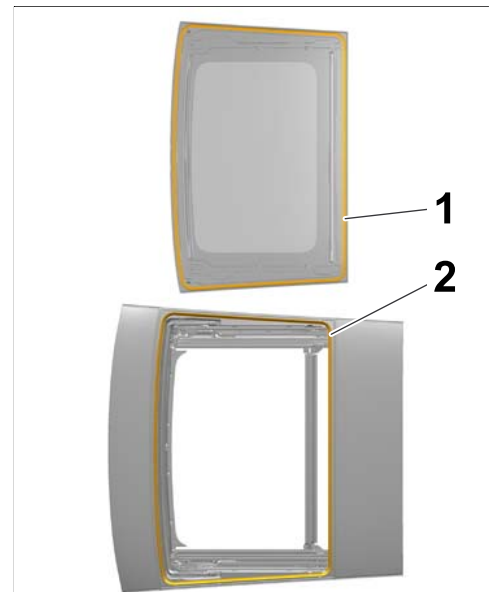
- 1.3 Using the tip of your finger ⇒ *Greasing seal for sliding-roof panel -2-*, coat the sealing surface (underside) ⇒ *Greasing seal for sliding-roof panel -inset-* of the seal with Osixo Anti Squeak sliding compound, Part No. **999.917.557.00** all the way around ⇒ *Greasing seal for sliding-roof panel -1-*.
- 1.4 Close sliding roof.



Greasing seal for sliding-roof panel

Reworking electric slide/tilt roof, glass (I-no. 653)

- 2 Clean the seal ⇒ *Seal and contact surface -1-* and contact surface ⇒ *Seal and contact surface -2-*.
 - 2.1 Open sliding roof.

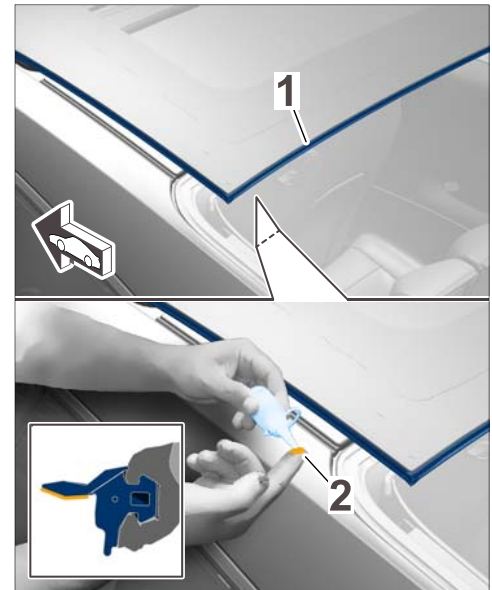


Seal and contact surface

- 2.2 Protect the interior with a protective cover (e.g. paper towels). ⇒ *Fitting protective cover*
- 2.3 Clean the seal and contact surface on the body side (front transverse, side and rear transverse) with isopropanol.
- 2.4 Using the tip of your finger (2), coat the sealing surface (underside) of the seal with Carbaflo grease sliding compound, Part No. **000.043.303.39** all the way around (1).
- 2.5 Close sliding roof.



Fitting protective cover



Greasing seal for sliding-roof panel (Metal roof shown)

Invoicing

The work involved is invoiced under the labor operation:

APOS	Labour operation	I No.
60054905	Reworking sliding roof	653

For invoicing and documentation using PQIS, enter the following coding:

Location (FES5)	60460	Sliding roof seal
Damage type (SA4)	3015	dirty

Invoicing

The work involved is invoiced under the labor operation:

APOS	Labor operation	I No.
60054910	Reworking sliding roof	651 "EXTERIOR SLIDING ROOF (METAL)"

For invoicing and documentation using PQIS, enter the following coding:

Location (FES5)	60460	Sliding roof seal
Damage type (SA4)	3015	dirty

Important Notice: Technical Bulletins issued by Porsche Cars North America, Inc. are intended only for use by professional automotive technicians who have attended Porsche service training courses. They are written to inform those technicians of conditions that may occur on some Porsche vehicles, or to provide information that could assist in the proper servicing of a vehicle. Porsche special tools may be necessary in order to perform certain operations identified in these bulletins. Use of tools and procedures other than those Porsche recommends in these bulletins may be detrimental to the safe operation of your vehicle, and may endanger the people working on it. Properly trained Porsche technicians have the equipment, tools, safety instructions, and know-how to do the job properly and safely. If a particular condition is described, do not assume that the bulletin applies to your vehicle, or that your vehicle will have that condition. See your authorized Porsche Dealer for the latest information about whether a particular technical bulletin applies to your vehicle. Part numbers listed in these bulletins are for reference only. Always check with your authorized Porsche dealer to verify the current and correct part numbers. The work procedures updated electronically in the Porsche PIWIS diagnostic and testing device take precedence and, in the event of a discrepancy, the work procedures in the PIWIS Tester are the ones that must be followed.

© Porsche Cars North America, Inc.

Dealership	Service Manager	Shop Foreman	Service Technician
Distribution	Asst. Manager	Warranty Admin.	Service Technician
Routing			

Dr. Ing. h.c. F. Porsche AG is the owner of numerous trademarks, both registered and unregistered, including without limitation the Porsche Crest®, Porsche®, Boxster®, Carrera®, Cayenne®, Cayman®, Macan®, Panamera®, Speedster®, Spyder®, Tiptronic®, VarioCam®, PCM®, PDK®, 911®, RS®, 4S®, 718®, 918 Spyder®, FOUR UNCOMPROMISED®, and the model numbers and distinctive shapes of the Porsche automobiles such as, the federally registered 911 and Boxster automobiles. The third party trademarks contained herein are the properties of their respective owners. Porsche Cars North America, Inc. believes the specifications to be correct at the time of printing. However, specifications, standard equipment and options are subject to change without notice. Some options may be unavailable when a car is built. Some vehicles may be shown with non-U.S. equipment. Please ask your authorized Porsche dealer for advice concerning the current availability of options and verify the optional equipment that you ordered. Porsche recommends seat belt usage and observance of traffic laws at all times.

Printed in the USA