



# SERVICE BULLETIN

Classification: EC16-034	Reference: NTB17-082	Date: July 21, 2017
-----------------------------	-------------------------	------------------------

## NISSAN; DTC P0456 CAUSED BY EVAP LEAK AT VENT CONTROL VALVE O-RING

### APPLIED

- VEHICLES:** 2009-2017 370Z Coupe (Z34)      2014-2017 Versa NOTE (E12)  
2010-2017 370Z Roadster (Z34)      2011-2017 Quest (E52)  
2007-2012 Altima Sedan (L32)      2004-2015 Titan (A60)  
2008-2013 Altima Coupe (L32)      2016-2017 Titan and Titan XD (A61)  
2009-2014 Maxima (A35)      2013-2017 NV200 (M20)  
2016-2017 Maxima (A36)      2014-2017 Taxi  
2012-2017 NV 1500/2500/3500/Passenger (F80)

### IF YOU CONFIRM

The MIL is ON in an **APPLIED VEHICLE** with DTC P0456 (EVAP VERY SML LEAK)

### AND

- DTC P0456 is not caused by a loose fuel fill cap (refer to NTB13-097).
- An EVAP leak has been detected where the vent control valve mounts to the canister.
- The vent control valve O-ring seal is determined to be the cause.

### ACTION

1. **DO NOT REPLACE** the vent control valve.
2. Replace the vent control valve **O-ring seal (O-ring)**.
  - Refer to **SERVICE PROCEDURE** on page 2.

**IMPORTANT:** The purpose of ACTION (above) is to give you a quick idea of the work you will be performing. You **MUST** closely follow the entire SERVICE PROCEDURE as it contains information that is essential to successfully completing this repair.

Nissan Bulletins are intended for use by qualified technicians, not 'do-it-yourselfers'. Qualified technicians are properly trained individuals who have the equipment, tools, safety instruction, and know-how to do a job properly and safely. NOTE: If you believe that a described condition may apply to a particular vehicle, DO NOT assume that it does. See your Nissan dealer to determine if this applies to your vehicle.

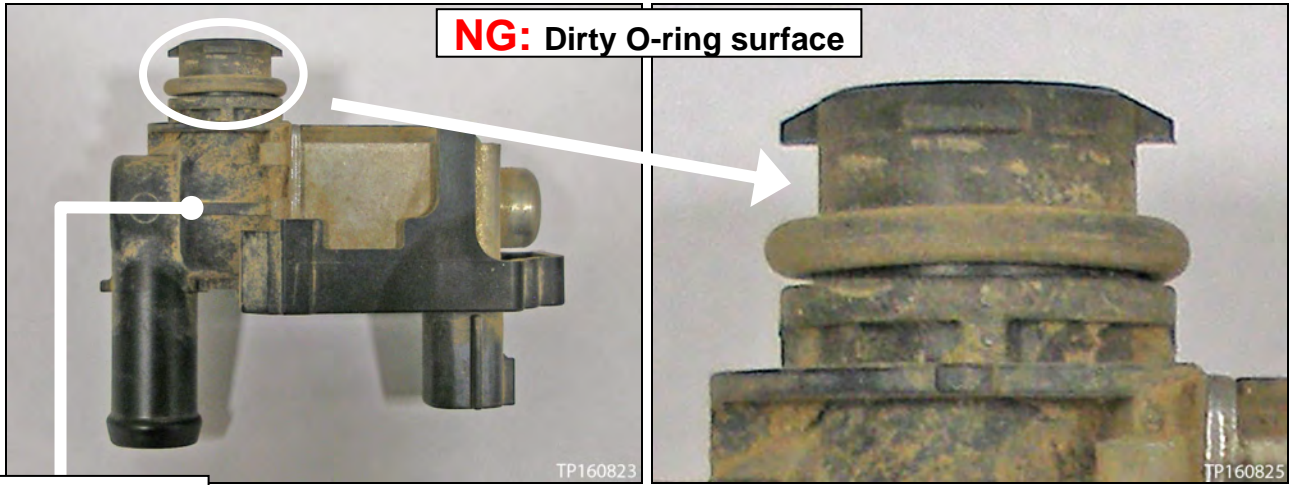
## SERVICE PROCEDURE

### 1. Replace the O-ring.

- To access the O-ring, refer to the appropriate section in the Electronic Service Manual (ESM) of the **APPLIED VEHICLE** for vent control valve removal and installation.
- This O-ring is now available separately (see **PARTS INFORMATION**).
- When installing, do not add any lubrication to the O-ring.
- Seat the O-ring all the way down as shown on page 4, Figure 7.
  - Having the O-ring seated all the way down will assure it is not twisted or rolled over.
- Refer to the pictures on pages 3 and 4 for additional installation information.

### CAUTION:

- Make sure the surfaces that the O-ring comes in contact with are clean.
- When installed, make sure the O-ring is not twisted or rolled over.
- Verify the repair is complete by checking for leaks with a “smoke” leak detection machine or CONSULT-III plus (C-III plus).
  - If a “smoke” leak detection machine is used, follow the manufacturer’s operating instructions.
  - If C-III plus is used:
    1. Confirm the fuel filler cap is secure.
    2. Connect Essential Tool J-42909 to the EVAP service port.
    3. Using Active Test, close the vent control valve.
    4. Apply pressure using J-42909 until the bar graph reaches about halfway.
    5. Monitor the bar graph for 10 minutes.



Vent control valve

Figure 1

Figure 2

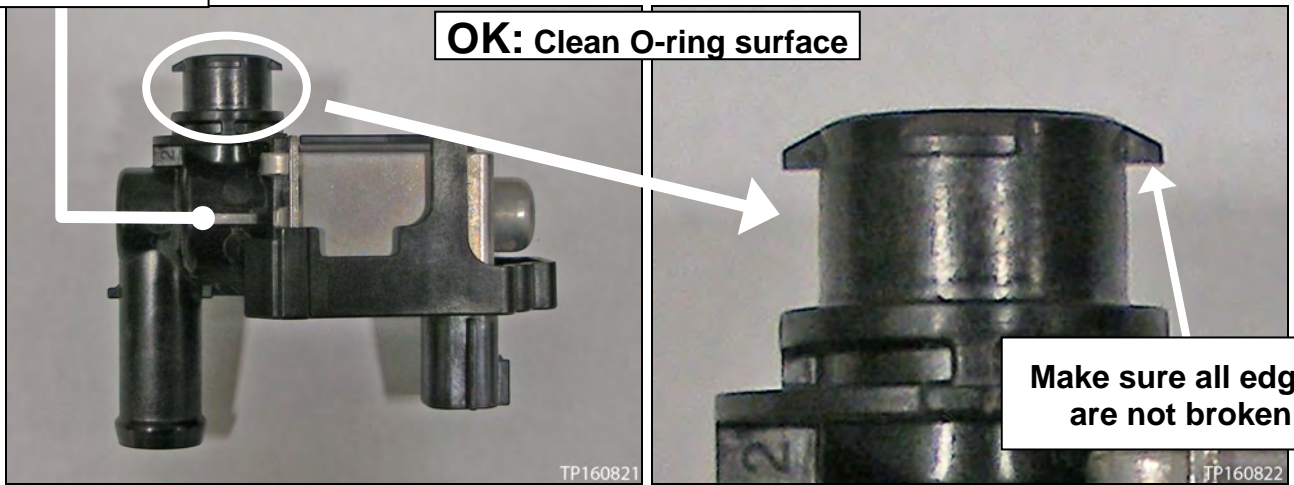


Figure 3

Figure 4

Where vent control valve mounts in canister

Canister

This surface must be clean all around

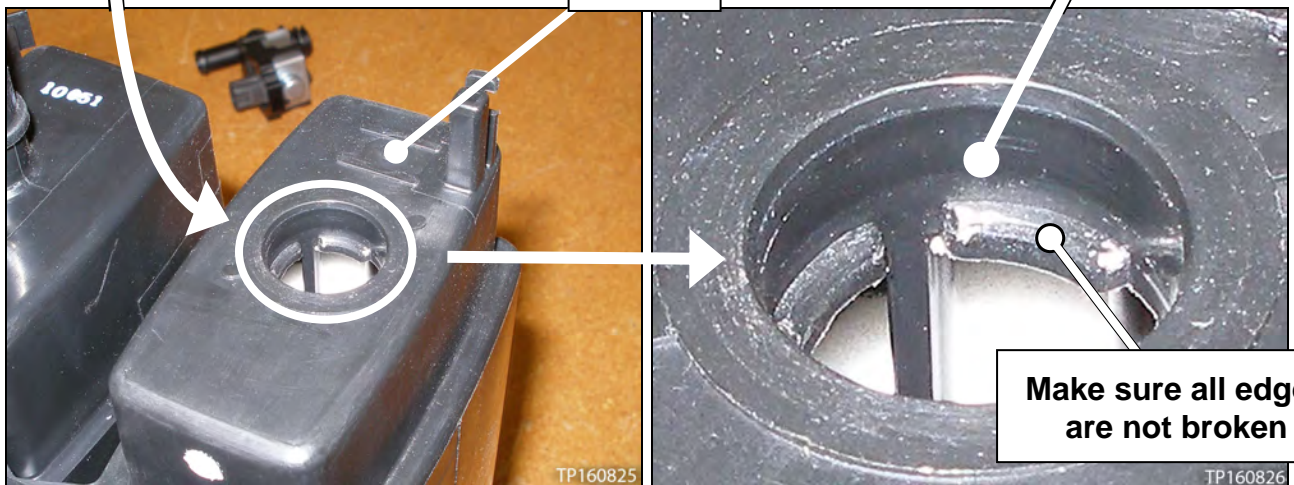


Figure 5

Figure 6

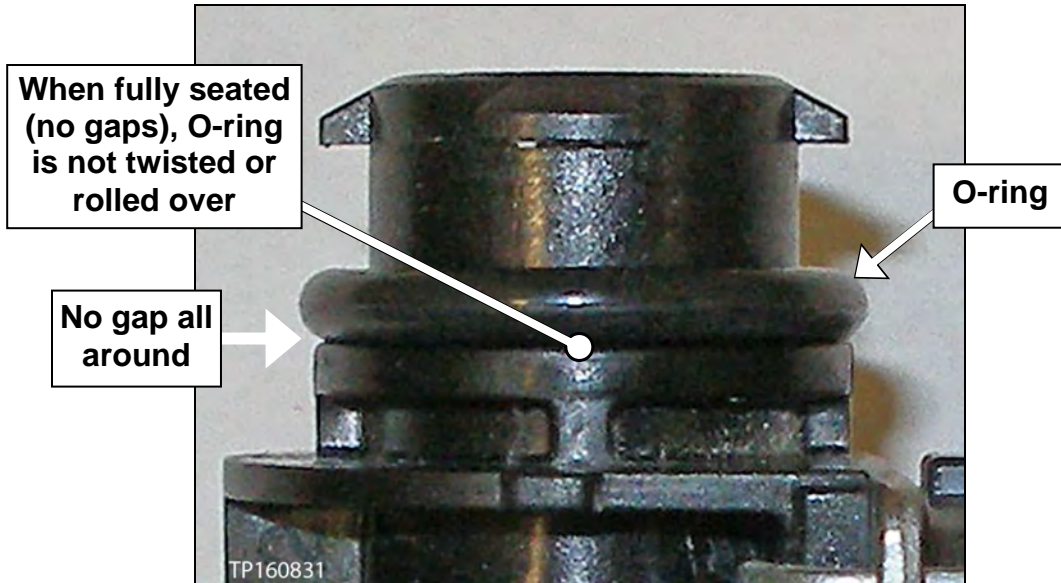


Figure 7

**PARTS INFORMATION**

DESCRIPTION	P/N	QUANTITY
SEAL O-RING	16618-JF00A	1

**CLAIMS INFORMATION**

Submit a Primary Part (PP) line claim using the following claims coding:

DESCRIPTION	MODEL	PFP	OP CODE	SYM	DIA	FRT
Replace Vent Control Valve O-Ring	Quest (E52)	16618-JF00A	FX57AA	HD	32	0.3
	Maxima (A36)					0.4
	Titan (A60)					
	Titan and Titan XD (A61)					
	Versa NOTE					
	NV 1500/2500/3500/Passenger					0.5
	NV200 and Taxi					
	Altima Sedan and Coupe (L32)					
	Maxima (A35)					
	370Z Coupe and Roadster (Z34)					