



# SERVICE BULLETIN

|                             |                         |                         |
|-----------------------------|-------------------------|-------------------------|
| Classification:<br>AT17-004 | Reference:<br>NTB17-041 | Date:<br>April 13, 2017 |
|-----------------------------|-------------------------|-------------------------|

## ADDITIONAL SERVICE WHEN REPLACING CONTROL VALVE OR TRANSAXLE ASSEMBLY

**APPLIED VEHICLES:** 2013-2017 Sentra (B17)  
2014-2017 Versa Note (E12)  
2013-2017 Versa (N17)

**APPLIED TRANSMISSION:** CVT

### SERVICE INFORMATION

After a CVT assembly or control valve replacement, additional service must be completed with CONSULT-III plus (C-III plus).

- The original calibration data must first be erased from the TCM and then new calibration data written.
- If the calibration data is not erased, the vehicle can experience drivability concerns which may result in a CVT issue.

### Additional Service when Replacing Control Valve or Transaxle Assembly

- The following procedures, starting on the next page, must be performed in this order.
- Check off procedure as they are performed in the order listed below.

| CHECK OFF | PROCEDURE                               | PAGE |
|-----------|---|------|
|           | ERASE CALILBRATION DATA                 | 2    |
|           | ERASE LEARNING VALUE                    | 4    |
|           | CONFORM CVTF DETERIORNTN                | 5    |
|           | Auxiliary gearbox clutch point learning | 8    |

Nissan Bulletins are intended for use by qualified technicians, not 'do-it-yourselfers'. Qualified technicians are properly trained individuals who have the equipment, tools, safety instruction, and know-how to do a job properly and safely. NOTE: If you believe that a described condition may apply to a particular vehicle, DO NOT assume that it does. See your Nissan dealer to determine if this applies to your vehicle.

## SERVICE PROCEDURE

1. Connect the CONSULT PC to the vehicle.
2. Start CONSULT III PLUS (C-III plus).
3. Wait for the plus VI to be recognized.
  - The serial number will display when the plus VI is recognized.

## ERASE CALILBRATION DATA

4. Navigate C-III plus to the screen shown in Figure 1 below.
  - **Diagnosis (All Systems) / TRANSMISSION / Work support**
5. Select **ERASE CALILBRATION DATA**.
6. Select **Start**.

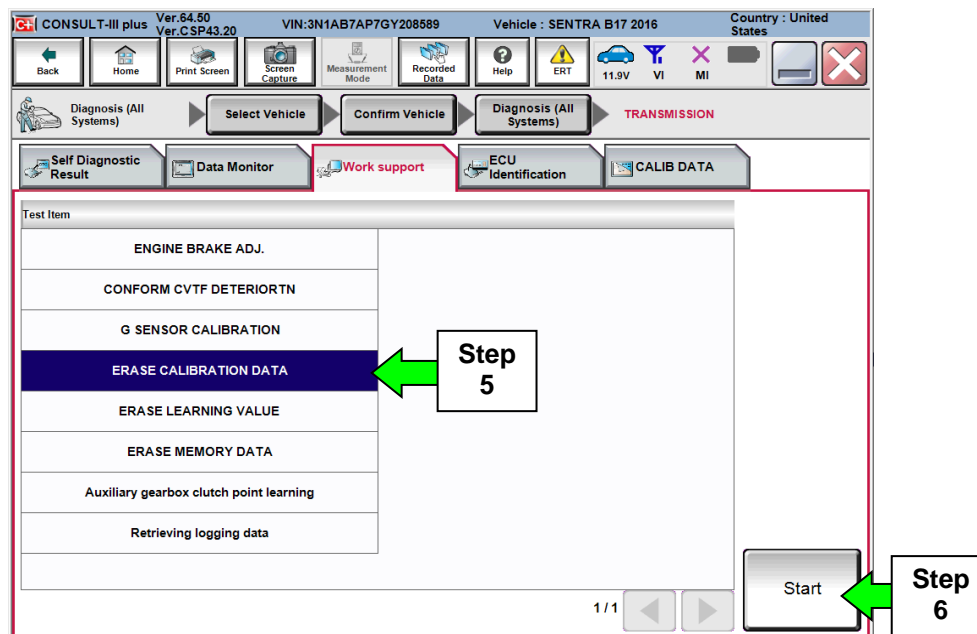


Figure 1

7. Select **Start**.

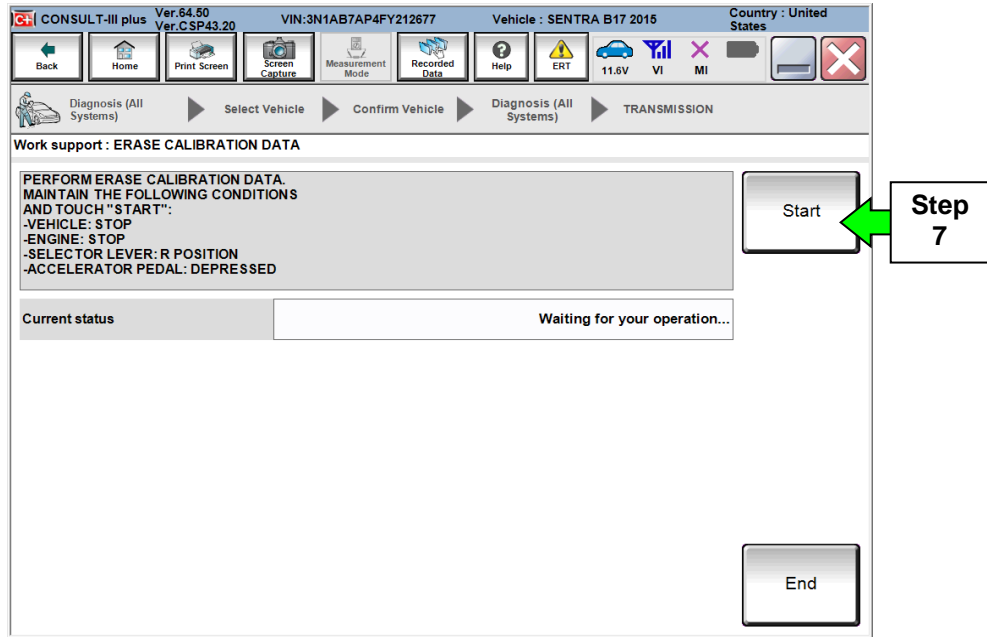


Figure 2

8. When the **Current status** changes to **COMPLETED**, select **End**.

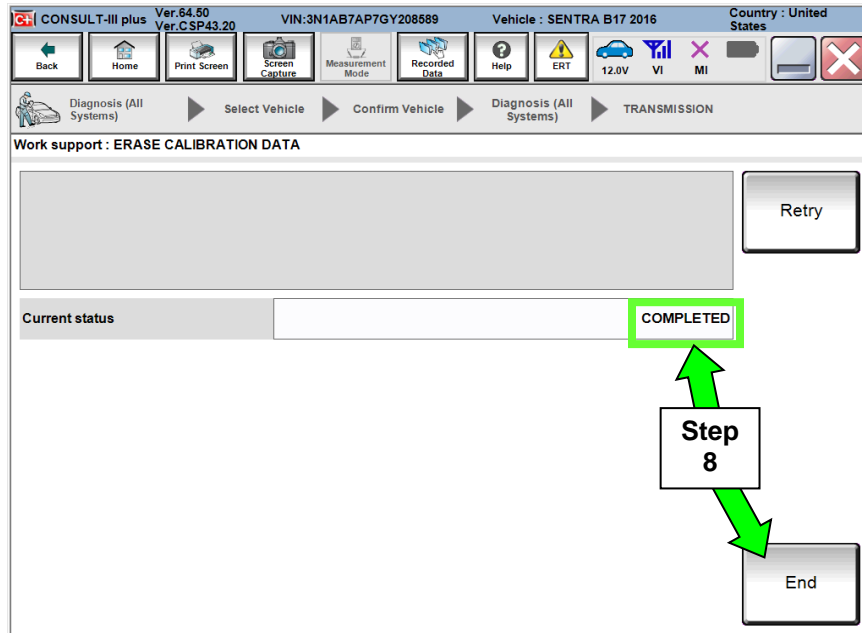


Figure 3

# ERASE LEARNING VALUE

9. With the C-III plus still connected, select **ERASE LEARNING VALUE**.

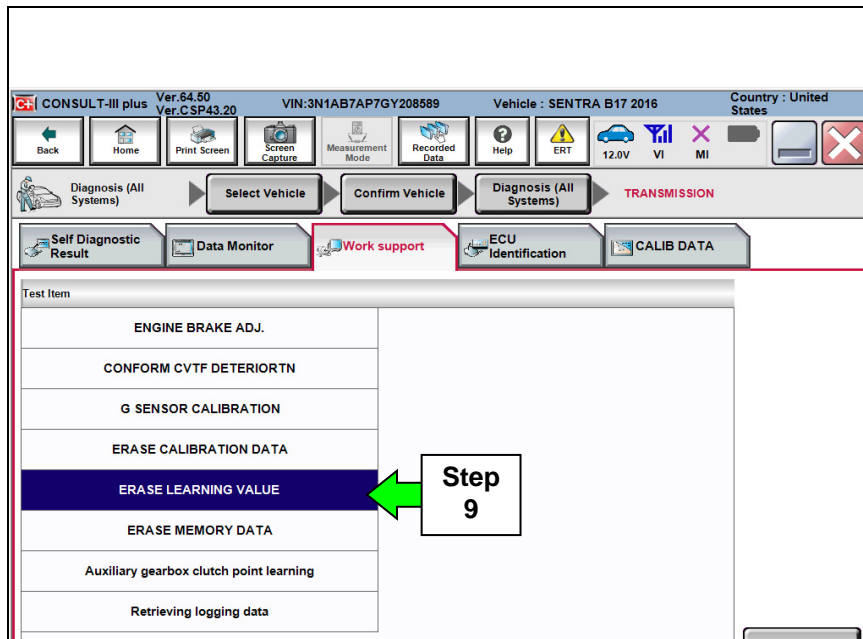


Figure 4

10. Select **Start**.

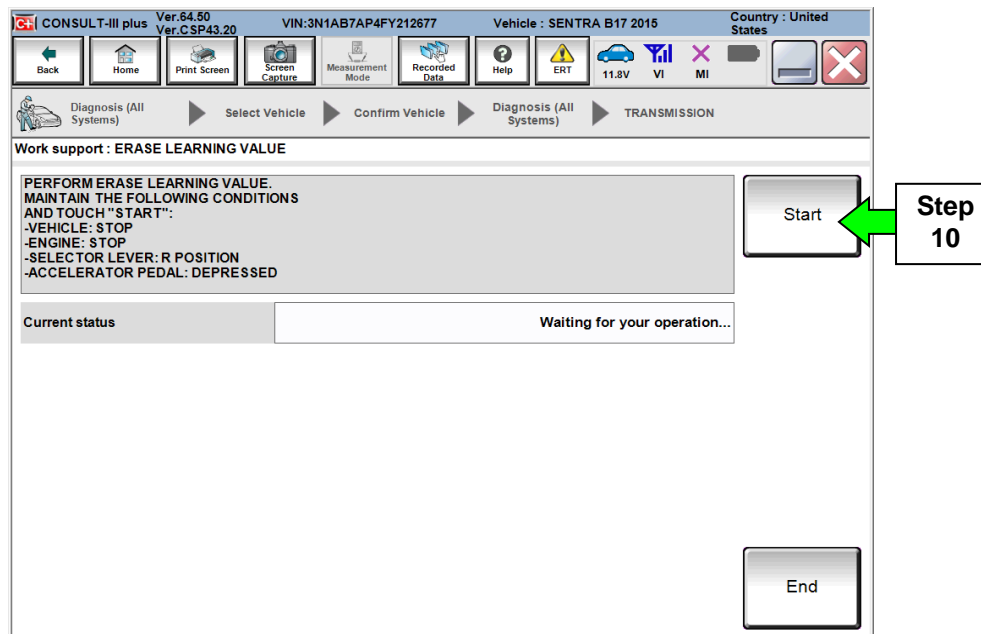


Figure 5

11. When the **Current status** changes to **COMPLETED** select **End**.

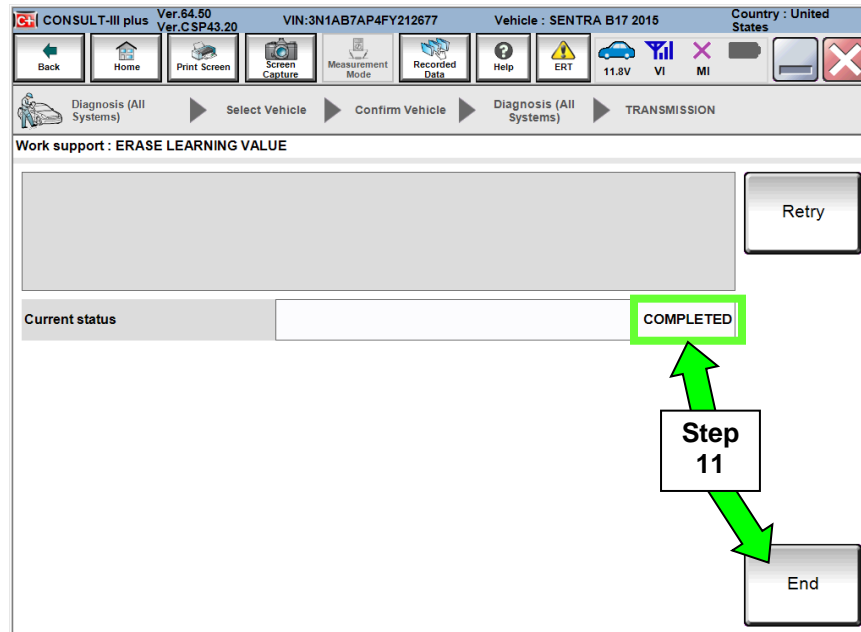


Figure 6

## CONFORM CVTF DETERIORTN

12. With the C-III plus still connected, select **CONFORM CVTF DETERIORTN**.

13. Select **Start**.

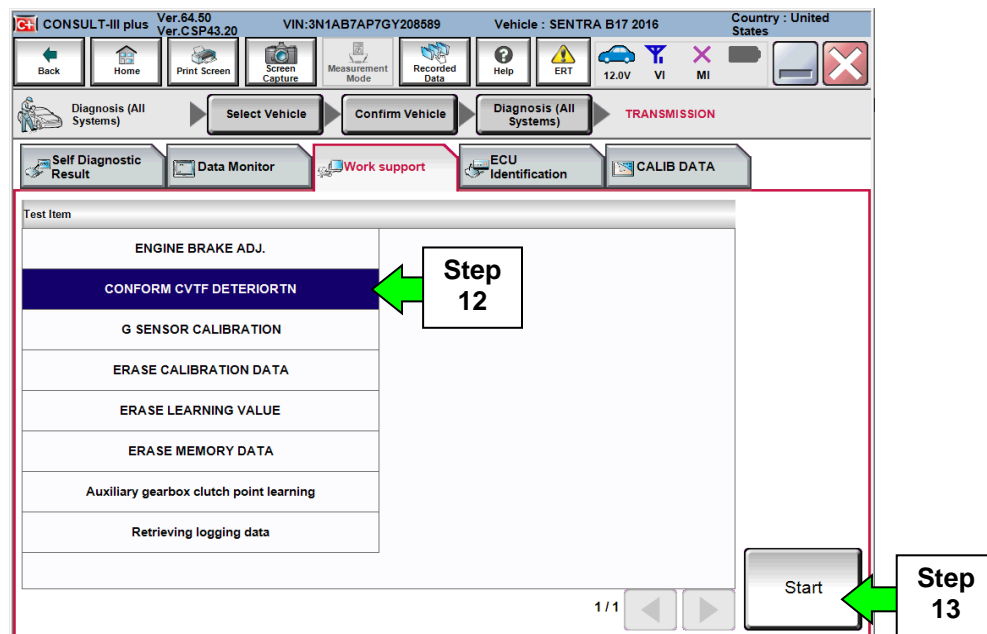


Figure 7

14. Select **Start**.

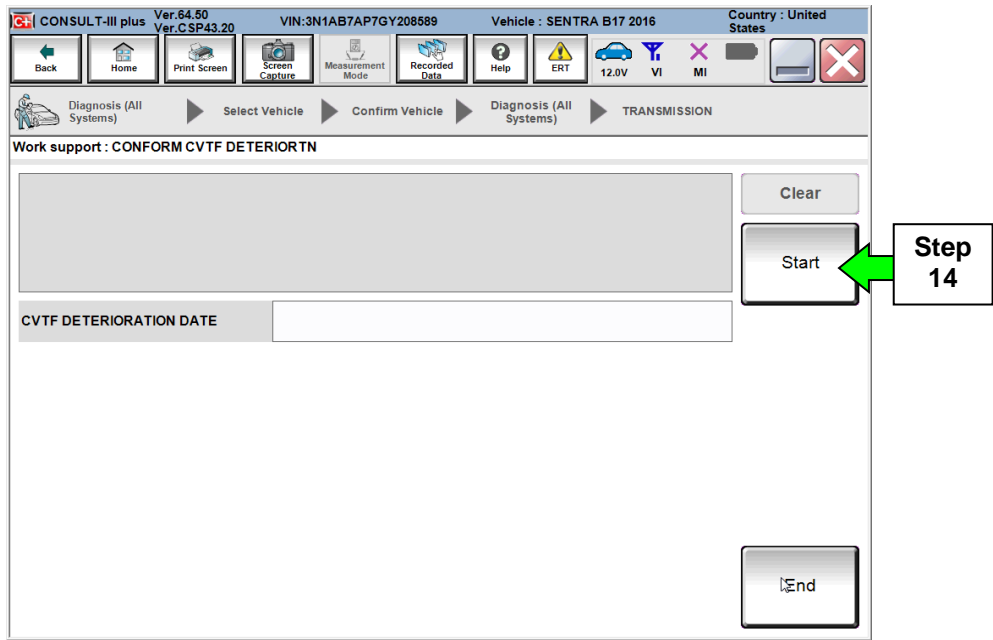


Figure 8

15. Select **Clear**.

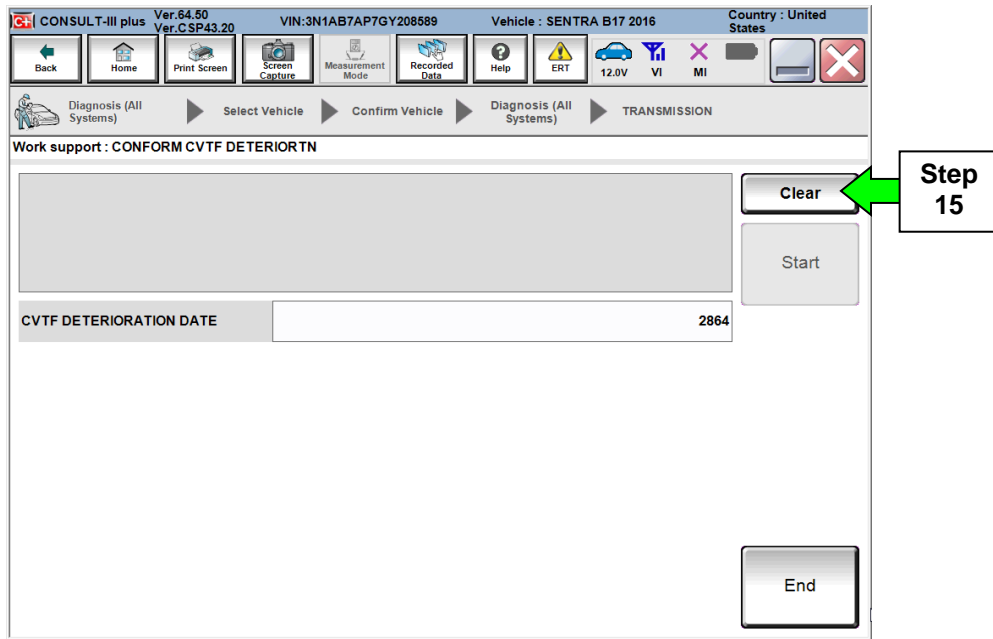


Figure 9

16. Select Yes.

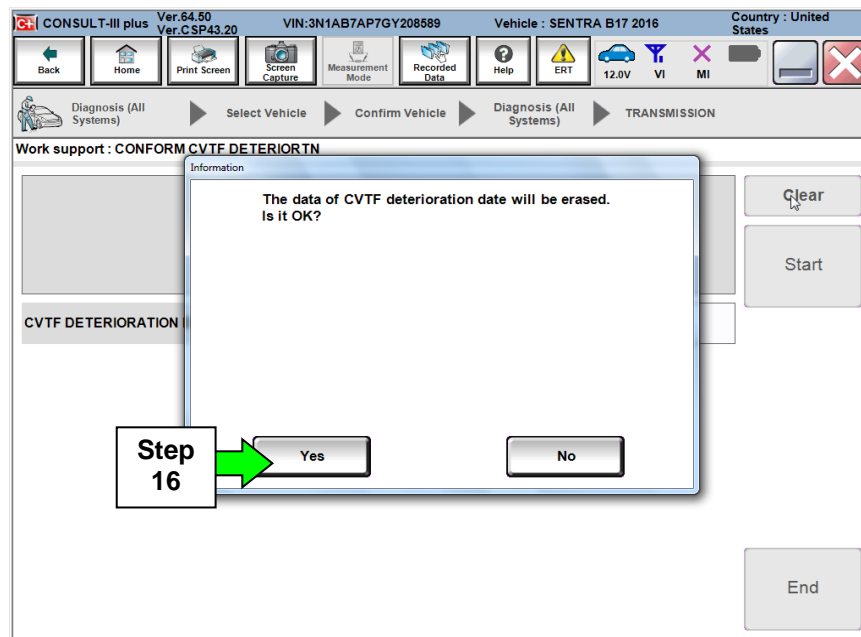


Figure 10

17. When CVTF DETERIORATION DATE changes to "0", select End.

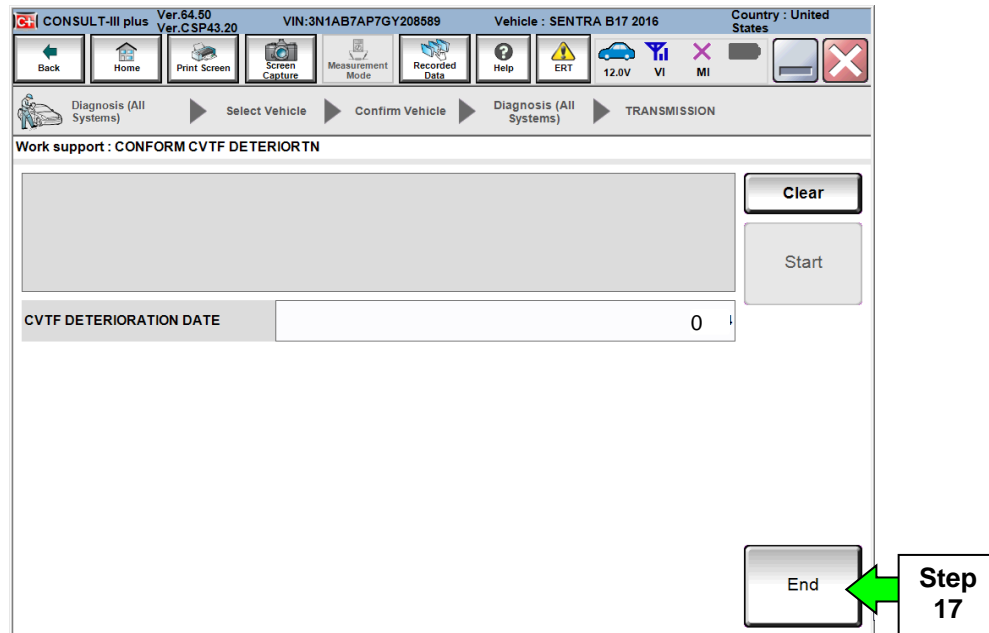


Figure 11

## Auxiliary gearbox clutch point learning

**NOTE: Please complete Auxiliary gearbox clutch point learning twice.**

18. Start the engine.

19. Set the parking brake, turn OFF the A/C, and then bring the engine to normal operating temperature range with CVT fluid temperature over 122°F (50°C).

20. Select **Auxiliary gearbox clutch point learning** and then **Start**.

Or

- If this feature is not available in the vehicle that is being repaired, skip to **Manual Auxiliary gearbox clutch point learning** on page 11.

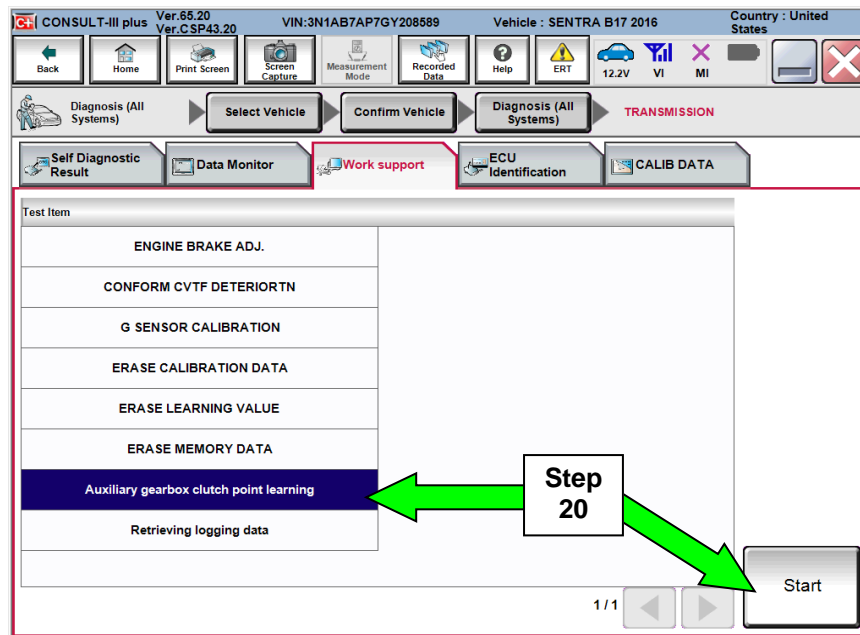


Figure 12



21. Follow the on screen instructions to meet all parameters displayed in Figure 13 and then select **Start**.

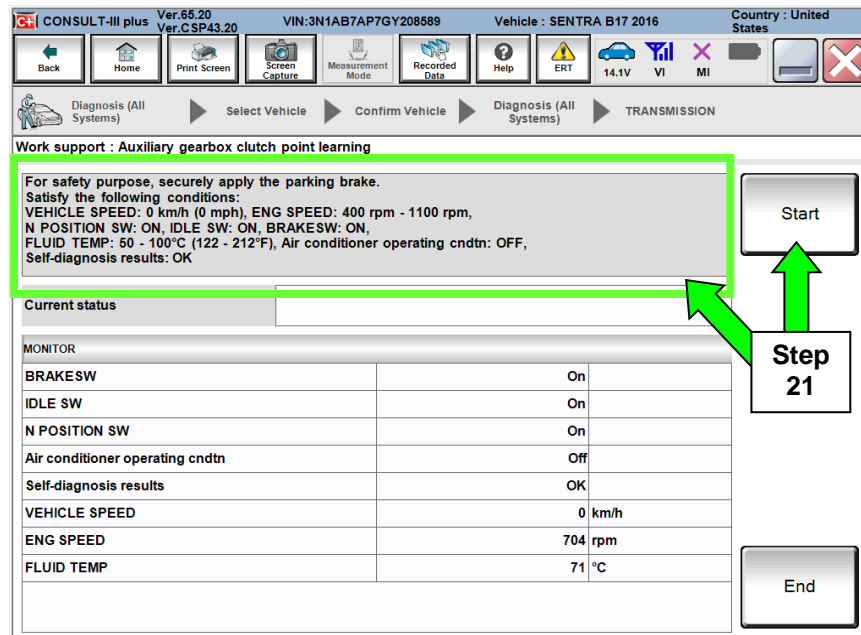


Figure 13

22. With brake pedal still applied, shift the CVT selector lever into the D position.

- Figure 15 on the next page will be displayed after shifting into D position.

**NOTE:** The Current status will show EXECUTING, but until the vehicle is shifted into the D position Auxiliary gearbox clutch point learning will not complete.

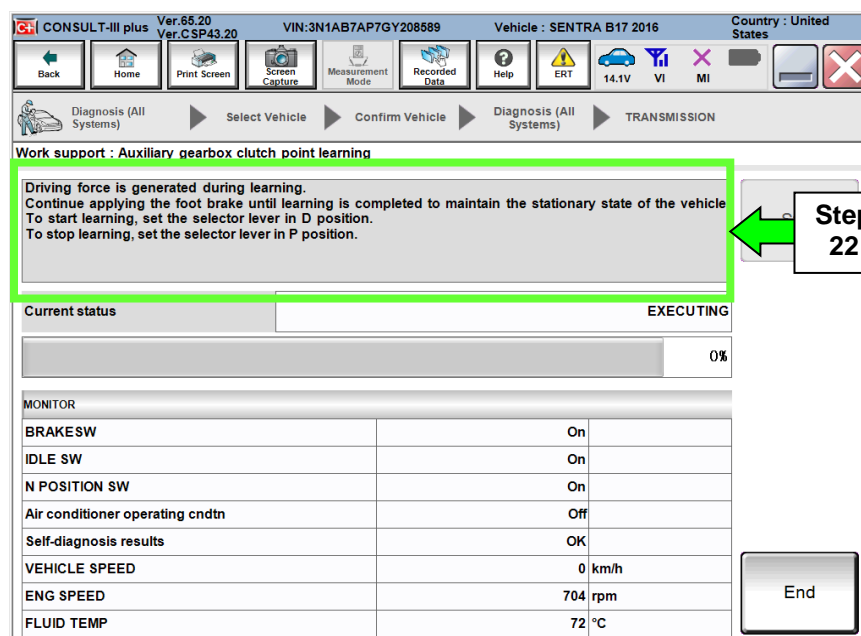


Figure 14

23. Continue to depress the brake pedal until the Current status shows “Completed” as shown in Figure 16.

**NOTE:** This may take several minutes to complete.

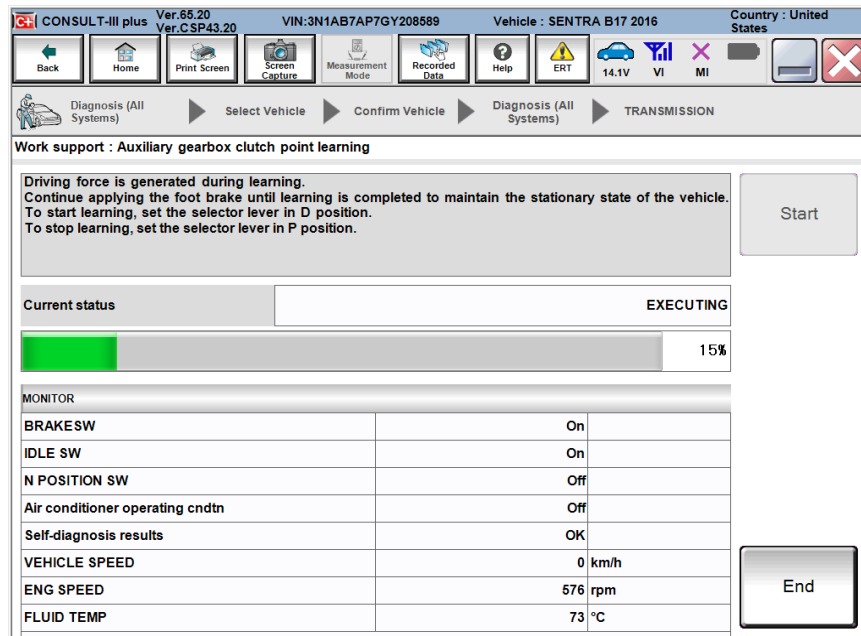


Figure 15

24. Select End.

25. Shift the vehicle into “P”, turn ignition OFF and release the brake pedal.

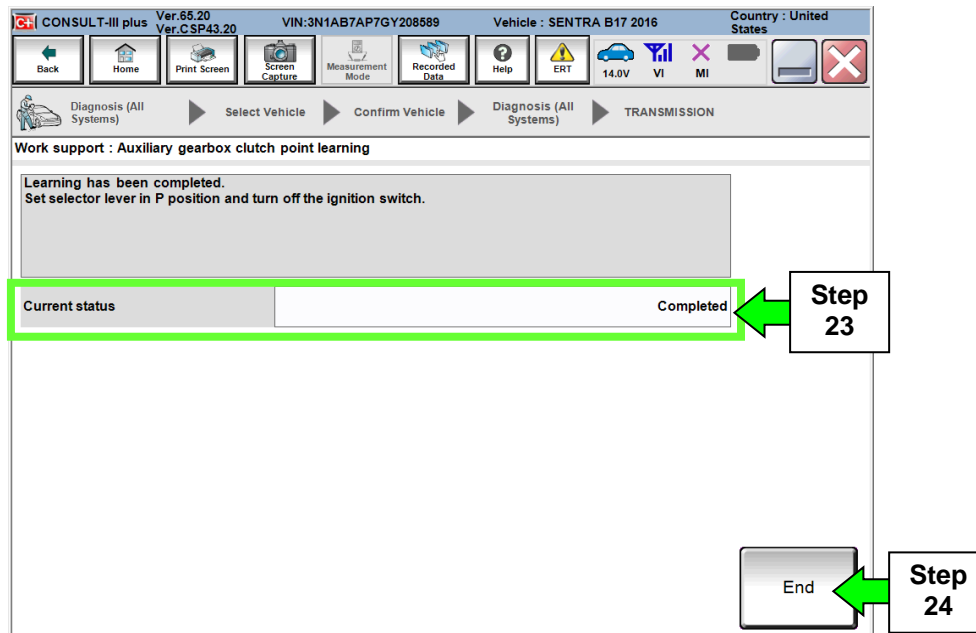


Figure 16

26. Perform step 20 to step 25 one additional time (Total: Two times).

27. Turn OFF C-III plus.

28. Disconnect C-III plus from the vehicle.

29. Verify the CVT operates normally and no abnormal noises are heard during a test drive.

30. Erase DTCs (this is in addition to erasing the DTCs during TCM reprogramming).

**Procedure complete.**

## Manual Auxiliary gearbox clutch point learning

**CAUTION:** If clutch touch point learning is not performed, you may feel shift shock when the auxiliary transmission shifts.

**NOTE:** This manual procedure is only needed if the auto procedure is not available in C-III plus.

- a. Start the engine and warm up the CVT fluid to 50°C (122°F).  
**NOTE:** Confirm the CVT fluid temperature by “FLUID TEMP” in “Data Monitor”.
- b. Turn the air conditioner OFF.
- c. Shift the CVT selector lever to the P position, turn the ignition OFF and then wait for 5 seconds.
- d. Start the engine and allow it to idle for 5 seconds.
- e. Turn the ignition OFF and then wait for 30 seconds.
- f. Perform Step “e” to Step “f” two more times (Total: Three times).
- g. Start the engine.
- h. Allow engine to idle for 30 seconds.
- i. Shift the CVT selector lever to D position.
- j. Accelerate the vehicle from 0 km/h (0 MPH) to 65 km/h (40 MPH) at low throttle (0.5/8 – 1/8).
- k. Decelerate the vehicle to 30 km/h (18 MPH) or less without using brakes.
- l. Stop the vehicle and shift the selector lever to P position.
- m. Turn the ignition OFF and wait for 5 seconds or more.
- n. Restart the engine.
- o. Perform Step “j” to Step “o” four times (Total: Five times).
- p. Shift the selector lever to D position.
- q. Accelerate the vehicle from 0 km/h (0 MPH) to 45 km/h (28 MPH) at low throttle (0.5/8 – 1/8).
- r. Stop the vehicle and shift the selector lever to P position.
- s. Turn the ignition OFF for 5 seconds or more and then restart the engine.
- t. Perform Steps “q” to Step “t” four times (Total: Five times).
- u. Drive the vehicle and check that no shock occurs while shifting gears.