



SERVICE BULLETIN

Classification: PD17-002a	Reference: NTB17-089a	Date: August 23, 2017
------------------------------	--------------------------	--------------------------

2016-2017 TITAN/TITAN XD; SHUDDER/CHATTER WHEN ACCELERATING FROM A STOP

This bulletin has been amended to correct the Parts Information.
Please discard all previous versions of this bulletin.

APPLIED VEHICLE: 2016-2017 Titan XD (A61)
2017 Titan (A61)

IF YOU CONFIRM

- Shudder/chatter is present during moderate to hard acceleration at speeds less than 25 mph.

And

- Does not occur at speeds above 25 mph.
- May be worse when towing a trailer.

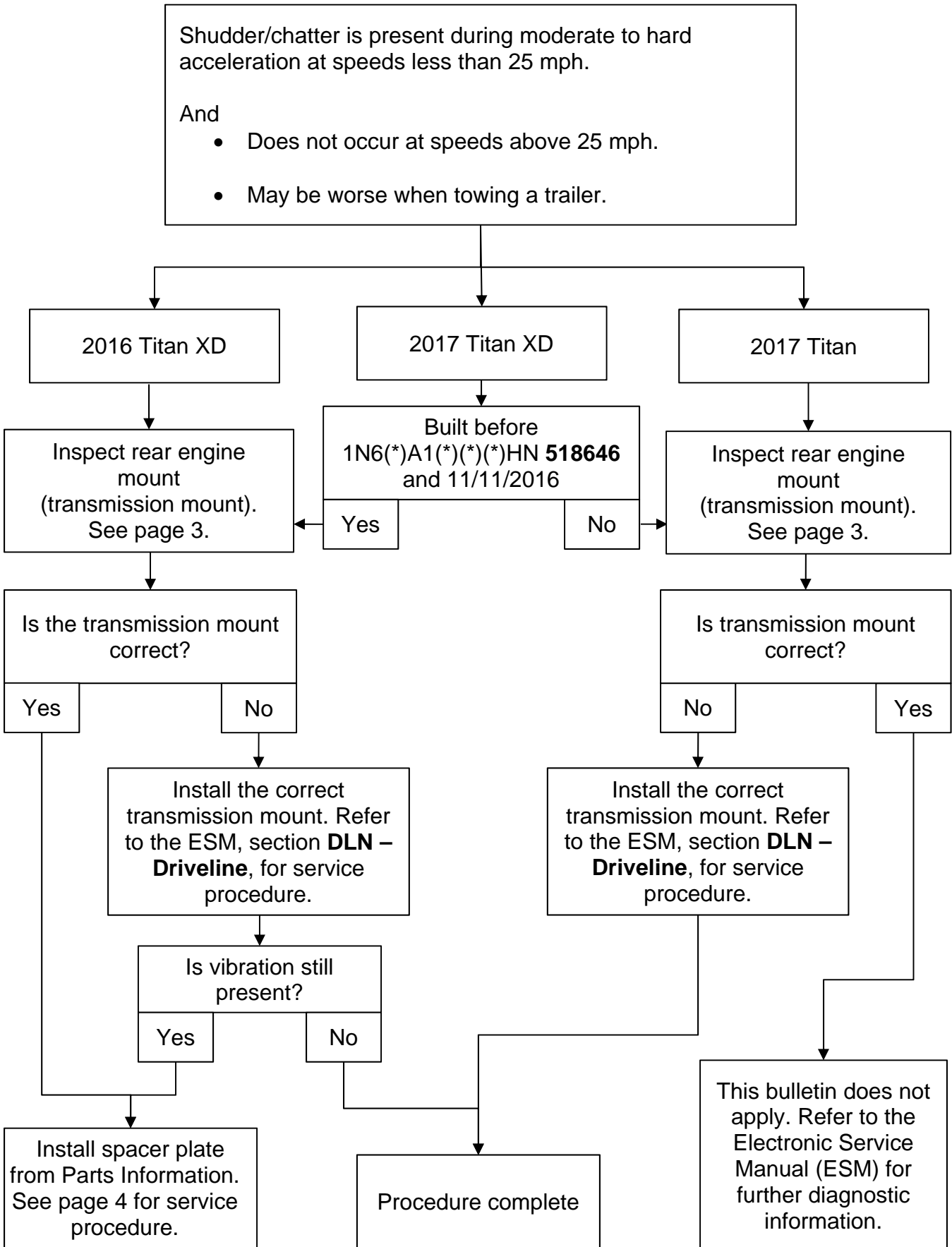
ACTION

Refer to the Repair Overview on page 2 for model specific Actions.

IMPORTANT: The purpose of ACTION (above) is to give you a quick idea of the work you will be performing. You **MUST** closely follow the entire SERVICE PROCEDURE as it contains information that is essential to successfully completing this repair.

Nissan Bulletins are intended for use by qualified technicians, not 'do-it-yourselfers'. Qualified technicians are properly trained individuals who have the equipment, tools, safety instruction, and know-how to do a job properly and safely. NOTE: If you believe that a described condition may apply to a particular vehicle, DO NOT assume that it does. See your Nissan dealer to determine if this applies to your vehicle.

Repair Overview



Identifying Correct Rear Engine Mount (Transmission Mount)

Check the color of the paint “identification dot” on the transmission mount (Figures A, B and C). The paint dot will be on the top of the bracket; the side with the studs.

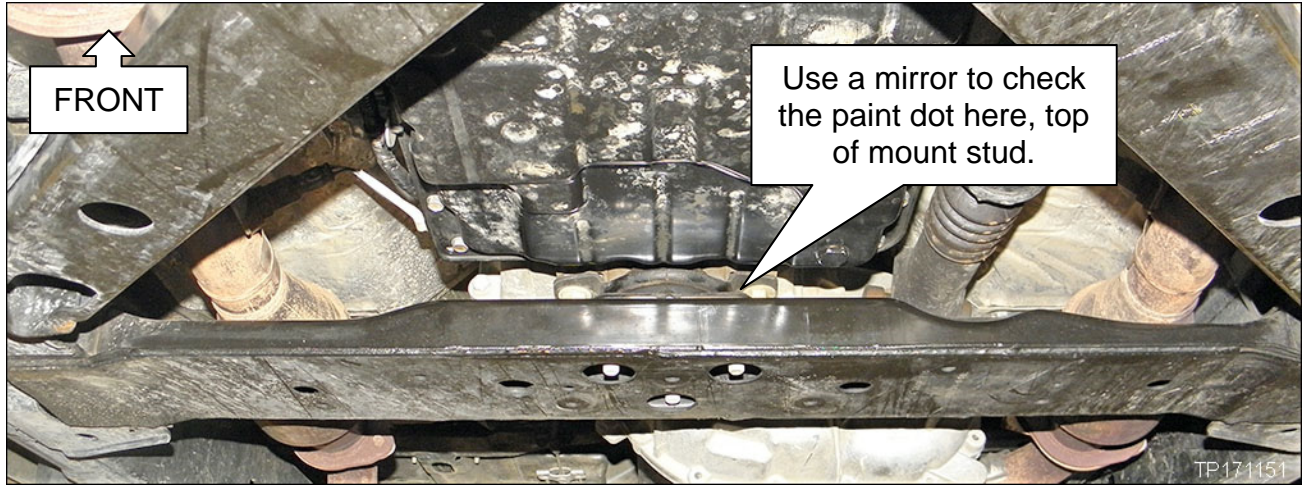


Figure A

- The color of the identification dot is specific to each transmission mount and is a visual indicator of how tall it is.
- Titan and Titan XD use a transmission mount that is unique to each model.
- The following identification dots must be present and correct for the applied vehicle:
 - Yellow Dot > Titan XD Gas
 - White Dot > Titan Non-XD Gas
 - Green Dot > Titan XD Diesel

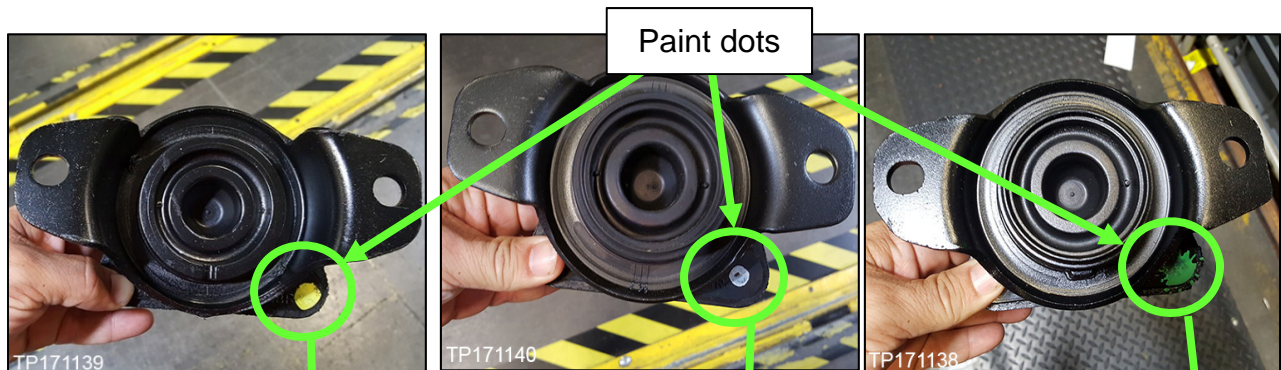


Figure B

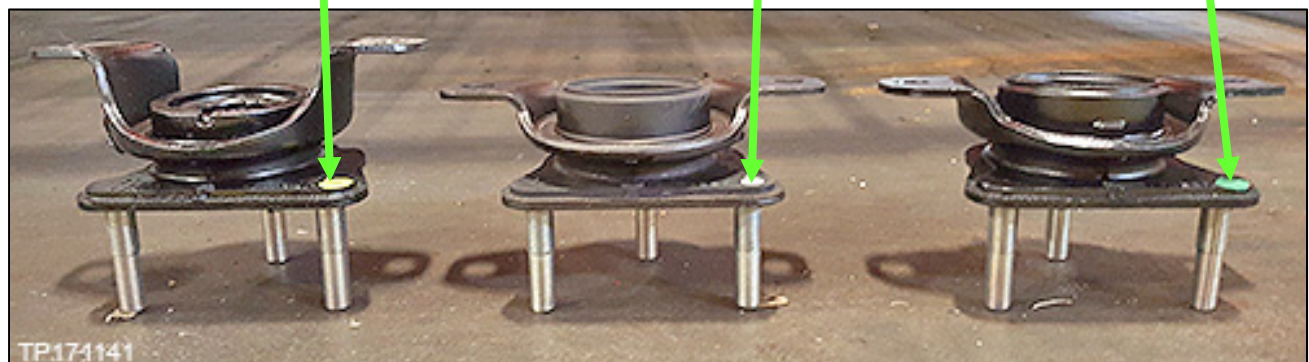


Figure C

SERVICE PROCEDURE

All Applied Vehicles

Refer to the Electronic Service Manual (ESM), section **DLN – Driveline**, for the procedure to remove and replace the rear engine mount (transmission mount), if required.

2016-2017 Titan XD only

Installation of rear propeller shaft's center support bearing bracket spacer plate.

1. Remove the two (2) nuts holding the rear propeller shaft's center support bearing bracket to the vehicle frame and gently lower propeller shaft off of the studs.
 - Discard these nuts. They will be replaced with new ones later in this procedure.

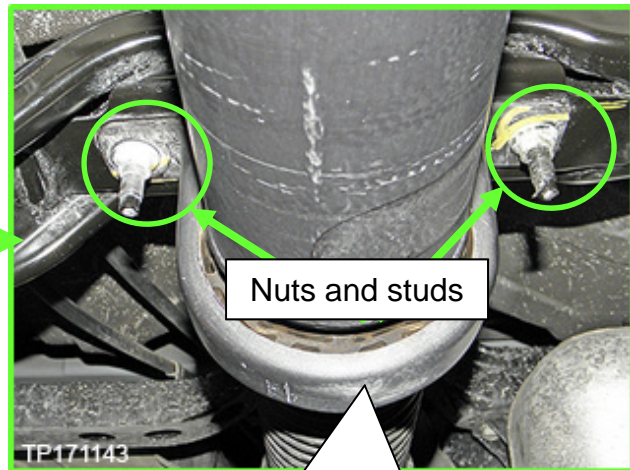
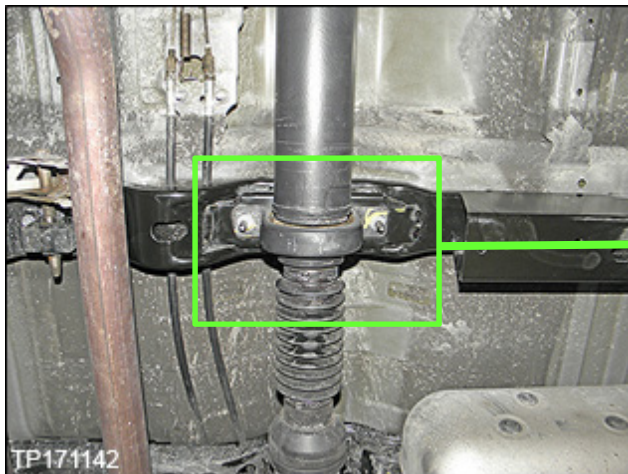


Figure 1

Rear propeller shaft's center support bearing bracket

2. Install the spacer plate over the center support bearing bracket studs.

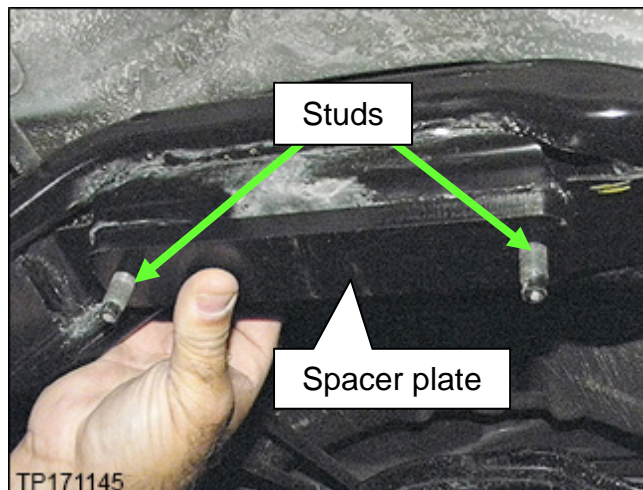


Figure 2

3. Re-install the rear propeller shaft's center support bearing bracket to vehicle frame with two (2) new nuts from Part Information (Figure 3 and 4).

NOTE: The new nuts are different from the original nuts and are now of a lock nut design.

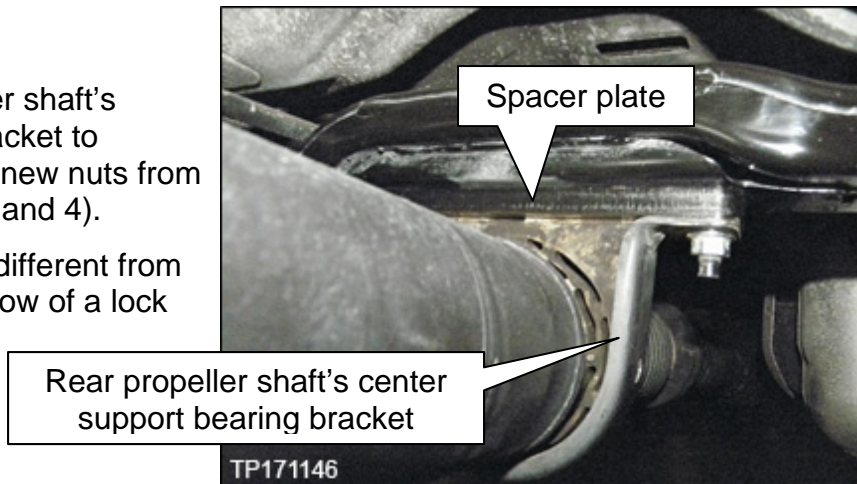


Figure 3

4. Torque the two (2) nuts to 49 N•m, (5 kg-m, **36 ft-lbs.**).

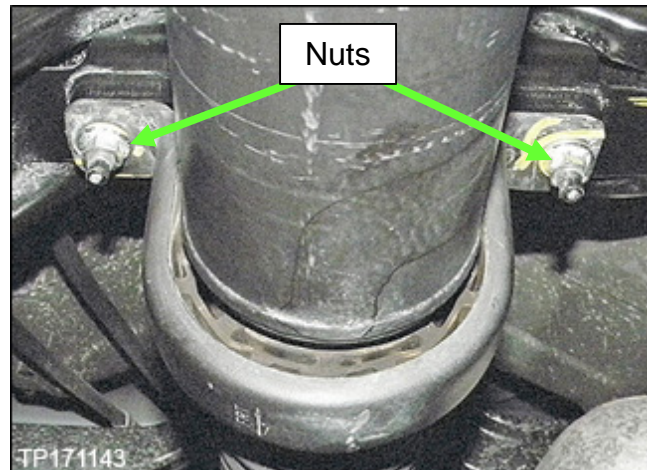


Figure 4

5. Test drive vehicle and confirm that the vibration is no longer present.
 - If the vibration is still present, go back to ASIST for further diagnostic information.
 - Diagnosis and repairs beyond installation of the center support bearing bracket are not covered by this bulletin.

PARTS INFORMATION

MODEL	DESCRIPTION	PART NUMBER	QUANTITY
2016 and 2017 Titan XD	Spacer Plate	50452-EZ99A	1
	Lock Nuts	08918-6401A	2
2016 Titan XD Diesel	Rear Engine Mount (Transmission Mount)	11320-EZ40B (Green Dot)	1
2016 Titan XD Gas		11320-EZ32B (Yellow Dot)	1
2017 Titan		11320-ZZ50A (White Dot)	1

CLAIMS INFORMATION

Submit a Primary Part (PP) type line claim using the following claims coding:

DESCRIPTION	PFP	OP CODE	SYM	DIA	FRT
Install Spacer Plate	(1)	LX09AA	ZE	32	0.4

(1) Refer to the electronic parts catalog (FAST) and use the Frame Assy (50100-*****) as the Primary Failed Part (PFP).

Or

Submit a Primary Part (PP) type line claim using the following claims coding:

DESCRIPTION	PFP	OP CODE	SYM	DIA	FRT
Install Rear Engine Mount	(1)	AW55AA	ZE	32	(2)

(1) Refer to the electronic parts catalog (FAST) and use the Rear Engine Mount (11320) as the Primary Failed Part (PFP).

(2) Reference the current Nissan Warranty Flat Rate Manual and use the indicated flat rate time.

Or, if both are replaced

Submit a Primary Part (PP) type line claim using the following claims coding:

DESCRIPTION	PFP	OP CODE	SYM	DIA	FRT
Install Rear Engine Mount	(1)	AW55AA	ZE	32	(2)
Install Spacer Plate		LX09AA			0.4

(1) Refer to the electronic parts catalog (FAST) and use the Frame Assy (50100-*****) as the Primary Failed Part (PFP).

(2) Reference the current Nissan Warranty Flat Rate Manual and use the indicated flat rate time.