



SERVICE BULLETIN

Classification: EC16-034a	Reference: NTB17-082a	Date: August 21, 2017
------------------------------	--------------------------	--------------------------

NISSAN; DTC P0456 CAUSED BY EVAP LEAK AT VENT CONTROL VALVE O-RING

This bulletin has been amended. The APPLIED VEHICLES and CLAIMS INFORMATION sections have been revised. No other changes have been made. Please discard previous versions of this bulletin.

APPLIED VEHICLES:	2003-2008 350Z Coupe (Z33)	2013-2017 NV200 (M20)
	2009-2018 370Z Coupe (Z34)	2005-2012 Pathfinder (R51)
	2014-2009 350Z Roadster (Z33)	2013-2017 Pathfinder (R52)
	2010-2018 370Z Roadster (Z34)	2014-2015 Pathfinder Hybrid (R52)
	2008-2013 Altima Coupe (L32)	2004-2009 Quest (V42)
	2007-2012 Altima Sedan (L32)	2011-2017 Quest (E52)
	2013-2017 Altima Sedan (L33)	2008-2013 Rogue (S35)
	2004-2015 Armada (TA60)	2014-2017 Rogue (T32)
	2017-2018 Armada (Y62)	2017 Rogue Sport (J11)
	2009-2014 Cube (Z12)	2007-2012 Sentra (B16)
	2005-2017 Frontier (D40)	2013-2017 Sentra (B17)
	2009-2017 GT-R (R35)	2014-2017 TAXI
	2011-2017 Juke (F15)	2004-2015 Titan (A60)
	2009-2014 Maxima (A35)	2016-2017 Titan and Titan XD (A61)
	2016-2017 Maxima (A36)	2007-2012 Versa Hatchback (C11)
	2015-2017 Micra (K13)	2014-2017 Versa Note (E12)
	2009-2014 Murano (Z51)	2007-2011 Versa Sedan (C11)
	2015-2017 Murano (Z52)	2012-2018 Versa Sedan (N17)
	2016 Murano Hybrid (Z52)	2005-2015 Xterra (N50)
	2012-2017 NV 1500/2500/3500/Passenger (F80)	

IF YOU CONFIRM

The MIL is ON in an **APPLIED VEHICLE** with DTC P0456 (EVAP VERY SML LEAK)

AND

- DTC P0456 is not caused by a loose fuel fill cap (refer to NTB13-097).
- An EVAP leak has been detected where the vent control valve mounts to the canister.
- The vent control valve O-ring seal is determined to be the cause.

IMPORTANT: The purpose of ACTION (on page 2) is to give you a quick idea of the work you will be performing. You **MUST** closely follow the entire SERVICE PROCEDURE as it contains information that is essential to successfully completing this repair.

Nissan Bulletins are intended for use by qualified technicians, not 'do-it-yourselfers'. Qualified technicians are properly trained individuals who have the equipment, tools, safety instruction, and know-how to do a job properly and safely. NOTE: If you believe that a described condition may apply to a particular vehicle, DO NOT assume that it does. See your Nissan dealer to determine if this applies to your vehicle.

ACTION

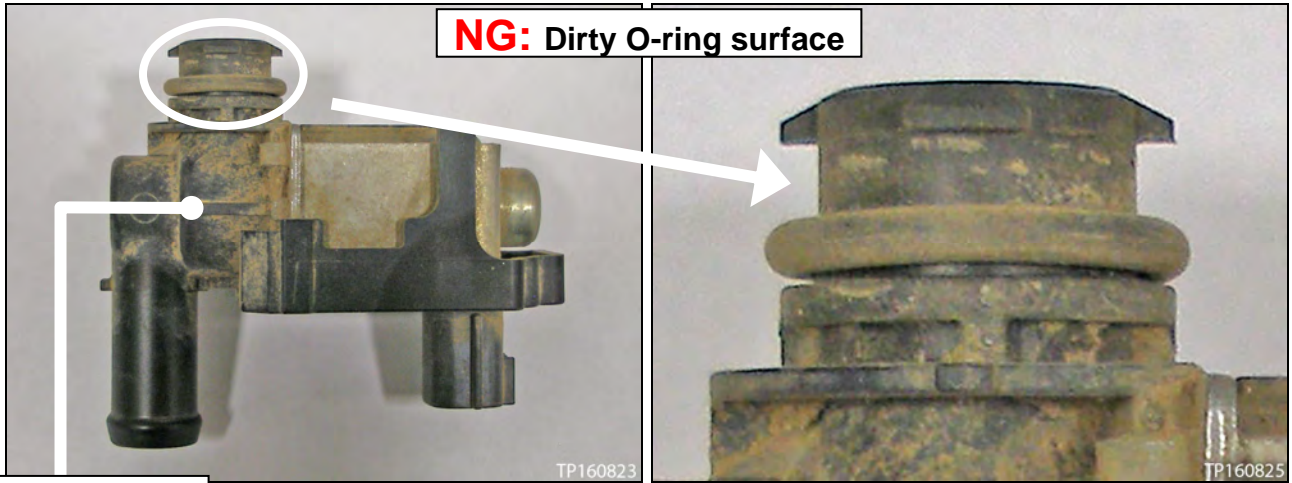
1. **DO NOT REPLACE** the vent control valve.
2. Replace the vent control valve **O-ring seal (O-ring)**.
 - Refer to **SERVICE PROCEDURE**, below.

SERVICE PROCEDURE

1. Replace the O-ring.
 - To access the O-ring, refer to the appropriate section in the Electronic Service Manual (ESM) of the **APPLIED VEHICLE** for vent control valve removal and installation.
 - This O-ring is now available separately (see **PARTS INFORMATION**).
 - When installing, do not add any lubrication to the O-ring.
 - Seat the O-ring all the way down as shown on page 4, Figure 7.
 - Having the O-ring seated all the way down will assure it is not twisted or rolled over.
 - Refer to the pictures on pages 3 and 4 for additional installation information.

CAUTION:

- Make sure the surfaces that the O-ring comes in contact with are clean.
- When installed, make sure the O-ring is not twisted or rolled over.
- Verify the repair is complete by checking for leaks with a “smoke” leak detection machine or CONSULT-III plus (C-III plus).
 - If a “smoke” leak detection machine is used, follow the manufacturer’s operating instructions.
 - If C-III plus is used:
 1. Confirm the fuel filler cap is secure.
 2. Connect Essential Tool J-42909 to the EVAP service port.
 3. Using Active Test, close the vent control valve.
 4. Apply pressure using J-42909 until the bar graph reaches about halfway.
 5. Monitor the bar graph for 10 minutes.



Vent control valve

Figure 1

Figure 2

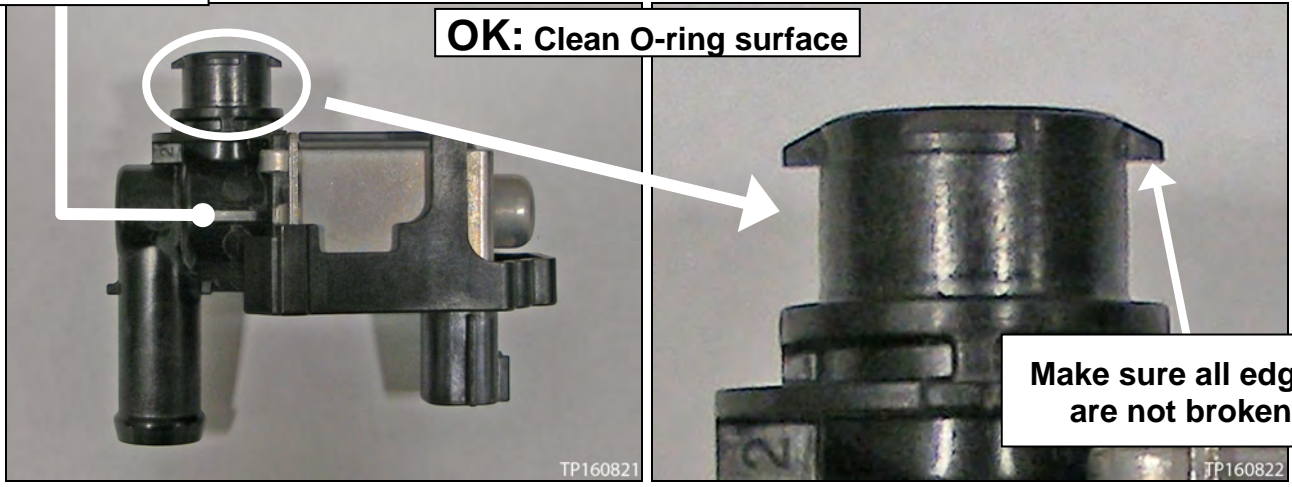


Figure 3

Figure 4

Where vent control valve mounts in canister

Canister

This surface must be clean all around

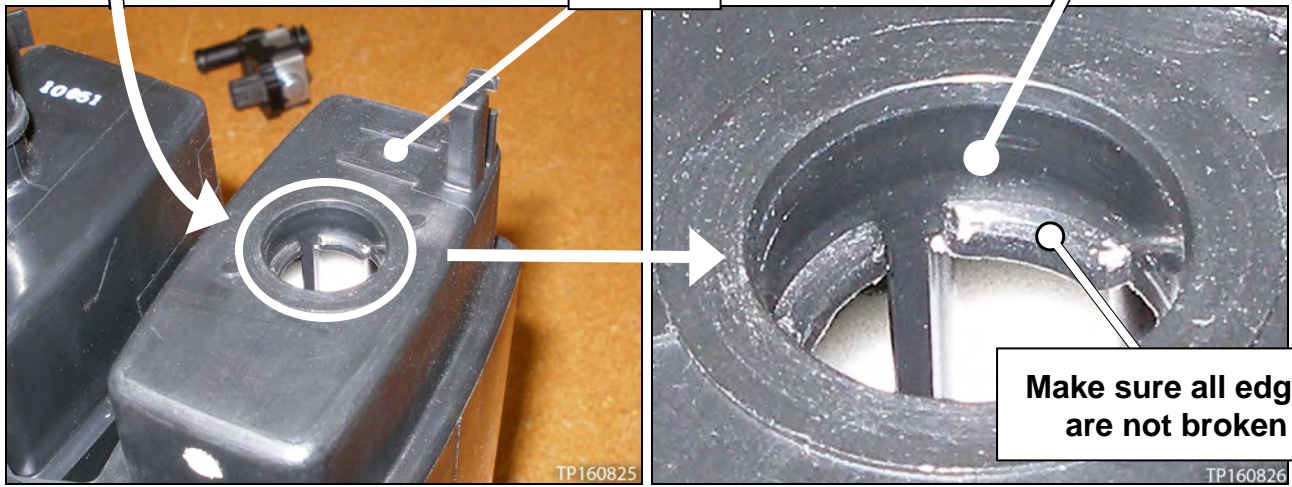


Figure 5

Figure 6

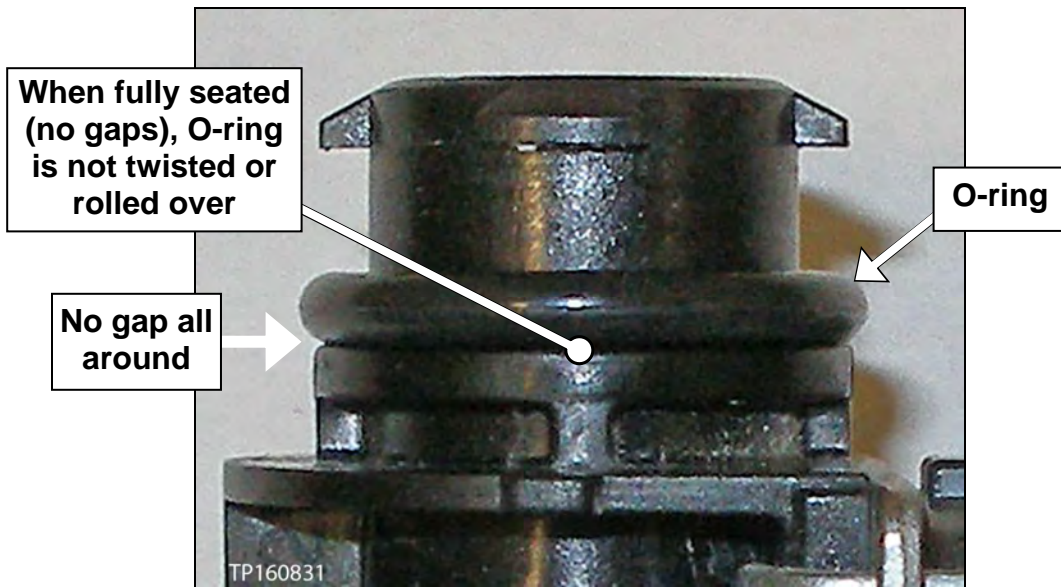


Figure 7

PARTS INFORMATION

DESCRIPTION	P/N	QUANTITY
SEAL O-RING	16618-JF00A	1

CLAIMS INFORMATION

Submit a Primary Part (PP) line claim using the following claims coding:

DESCRIPTION	MODEL	PFP	OP CODE	SYM	DIA	FRT
Replace Vent Control Valve O-Ring	350Z Coupe and Roadster (Z33)	16618-JF00A	FX57AA	HD	32	0.3
	Cube (Z12)					
	GTR (R35)					
	Juke (F15)					
	Murano (Z51)					
	Quest (E52)					
	Rogue (S35)					
	Rogue Sport (J11)					
	Altima (L33)					
	Frontier (D40)					
	Micra (K13)					
	Maxima (A36)					
	Murano (Z52)					
	NV 1500/2500/3500/Passenger (F80)					
	NV200 (M20) and TAXI					
	Pathfinder (R52)					
	Quest (V42)					
	Rogue (T32)					
	Sentra (B16)					
	Sentra (B17)					
	Titan (A60)					0.5
	Titan and Titan XD (A61)					
	Versa NOTE (E12)					
	Versa (N17)					
	370Z Coupe and Roadster (Z34)					
	Altima Sedan and Coupe (L32)					
	Armada (TA60)					
	Armada (Y62)					
	Maxima (A35)					
	Versa (C11)					0.7
Pathfinder (R51)						
Xterra (N50)						