



# SERVICE BULLETIN

Classification: AT17-001c	Reference: NTB17-016c	Date: August 17, 2017
------------------------------	--------------------------	--------------------------

## ARMADA, NV, TITAN, AND TITAN XD; 7-3 DOWN SHIFT SHOCK AND/OR LACK OF POWER/HESITATION

This bulletin has been amended throughout. Discard all previous versions of this bulletin.

- APPLIED VEHICLES:** 2017 Armada (Y62)  
2017 NV 2500/3500/Passenger (F80)  
2017 Titan (A61)  
2016-2017 Titan XD (A61)
- APPLIED ENGINE:** VK56VD (Gasoline V8)
- APPLIED TRANSMISSION:** 7AT - RE7R01B

### IF YOU CONFIRM

One or more of the following, or the customer reports one or more of the following:

- Transmission shift shock when accelerating enough to create a 7th gear-to-3rd gear down shift.
- With light acceleration at lower speeds there is a lack of power; feels like the selected transmission gear is too high (may also be described as hesitation).

### ACTION

1. Refer to step 6 in the **SERVICE PROCEDURE** to confirm TCM reprogramming applies.
2. If it applies, reprogram the TCM.

**IMPORTANT:** The purpose of “ACTION” (above) is to give you a quick idea of the work you will be performing. You **MUST** closely follow the entire **SERVICE PROCEDURE** as it contains information that is essential to successfully completing this repair.

Nissan Bulletins are intended for use by qualified technicians, not 'do-it-yourselfers'. Qualified technicians are properly trained individuals who have the equipment, tools, safety instruction, and know-how to do a job properly and safely. **NOTE:** If you believe that a described condition may apply to a particular vehicle, **DO NOT** assume that it does. See your Nissan dealer to determine if this applies to your vehicle.

## SERVICE PROCEDURE

**IMPORTANT:** Before starting the TCM program procedure, make sure:

- **ASIST on the CONSULT PC has been synchronized (updated) to the current date.**
- **All CONSULT-III plus (C-III plus) software updates (if any) have been installed.**

### NOTE:

- Most instructions for reprogramming with C-III plus are displayed on the CONSULT PC screen.
- If you are not familiar with the reprogramming procedure, *click here*. This will link you to the "CONSULT- III plus (C-III plus) Reprogramming" general procedure.

### CAUTION:

- Connect the GR8 to the 12V battery and set to ECM power supply mode. If the vehicle battery voltage goes below 12.0V or above 15.5V during reprogramming, the TCM may be damaged.
- Be sure to turn OFF all vehicle electrical loads. If a vehicle electrical load remains ON, the TCM may be damaged.
- Be sure to connect the AC Adapter. If the CONSULT PC battery voltage drops during reprogramming, the process will be interrupted and the TCM may be damaged.
- Turn OFF all external Bluetooth® devices (e.g., cell phones, printers, etc.) within range of the CONSULT PC and the plus VI. If Bluetooth® signal waves are within range of the CONSULT PC during reprogramming, reprogramming may be interrupted and the TCM may be damaged.

1. Connect the plus VI to the vehicle and open/start C-III plus.
2. Confirm the ignition is ON, with engine OFF.
3. Confirm the plus VI is recognized.
  - The **Serial No.** will display when the plus VI is recognized.
4. Select **Re/programming, Configuration**.

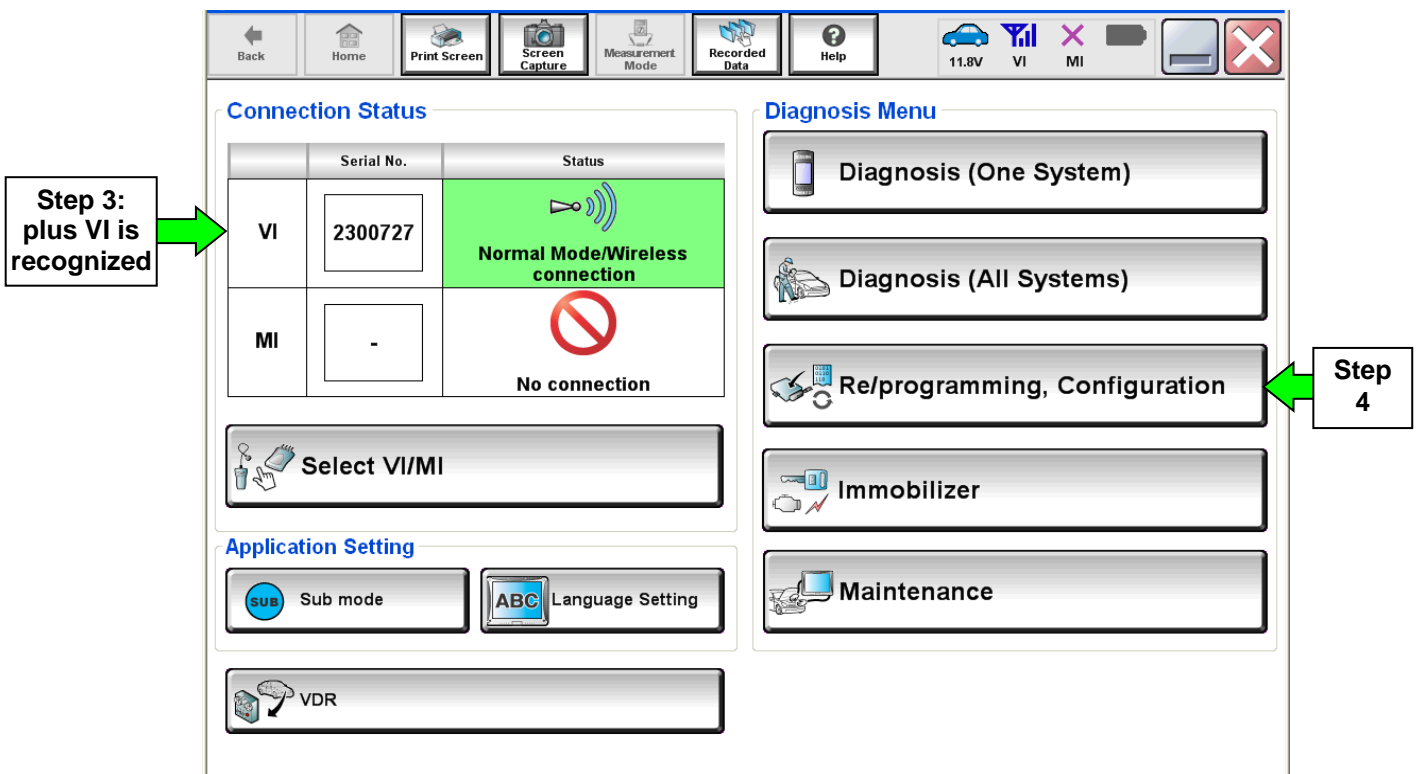


Figure 1

5. Follow the on-screen instructions and navigate C-III plus to the screen shown in Figure 2 on the next page.

6. When you get to the screen shown in Figure 2, confirm this bulletin applies as follows.
- A. Find the TCM **Part Number** and write it on the repair order.

**NOTE:** This is the current TCM Part Number (P/N).

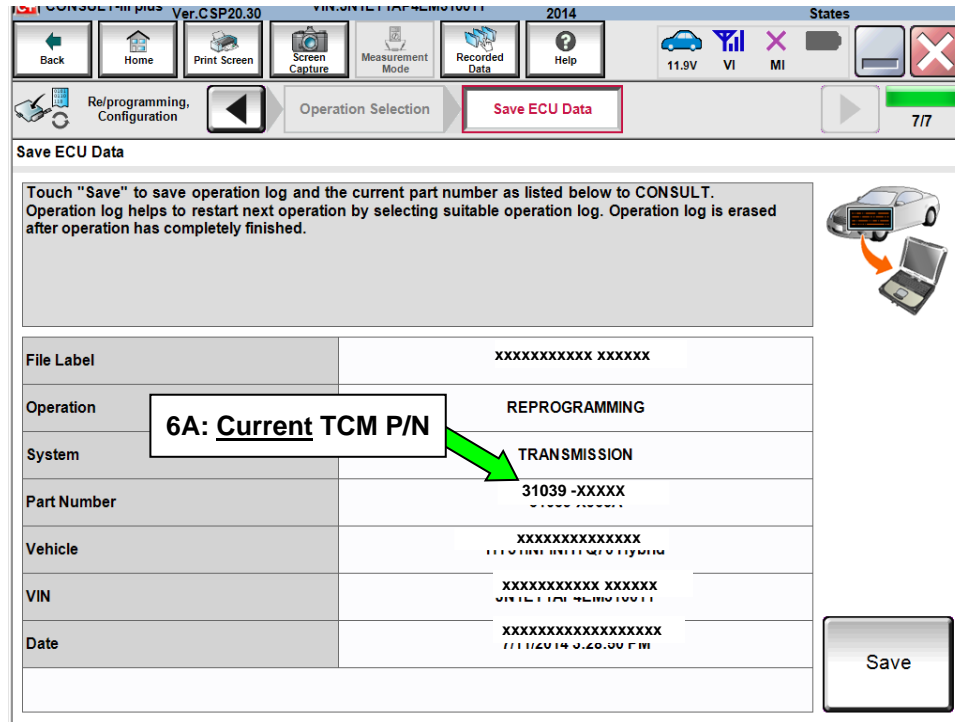


Figure 2

- B. Compare the P/N you wrote down to the numbers in the **Current TCM Part Number** column in **Table A** below.
- If there is a match, continue with the reprogramming procedure.
  - If there is not a match, this bulletin does not apply. Refer to ASIST for further diagnosis.

Table A

Model	Current TCM Part Number: 31039 -
Armada	26X9D, 26X9E, X041A, X041B
NV 2500/3500/Passenger	76X4C, 76X4D
Titan/Titan XD	26X2A, 26X2B, 26X2C, 26X2D X046A, X046B X048A, X048B, X048C, X048D X049A, X049B X058C, X058D

7. Follow the on-screen instructions to navigate C-III plus and reprogram the TCM.

**NOTE:**

- In some cases, more than one new P/N for reprogramming is available.
  1. If more than one new P/N is available, the screen in Figure 3 displays.
  2. Select and use the reprogramming option that **does not** have the message “Caution! Use ONLY with NTBXX-XXX”.
- If you get this screen and it is blank (no reprogramming listed), it means there is no reprogramming available for this vehicle. Close C-III plus and refer back to ASIST for further diagnosis.

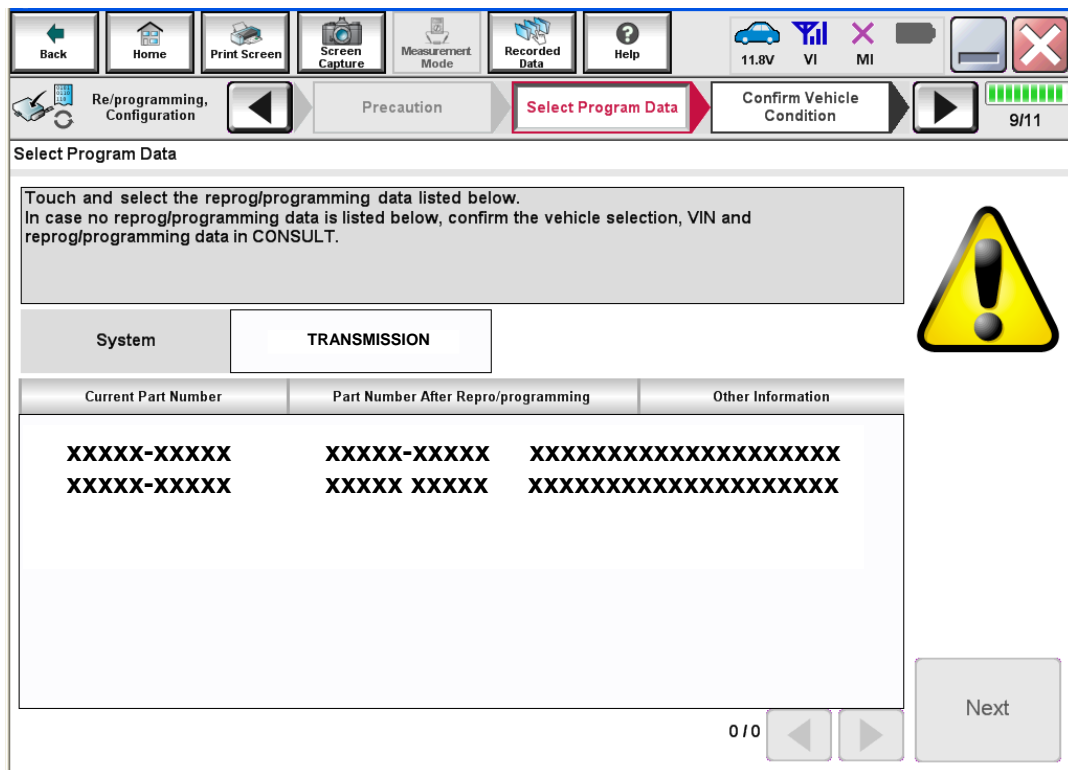


Figure 3

8. When the screen in Figure 4 displays, reprogramming is complete.

**NOTE:** If the screen in Figure 4 does not display (indicating that reprogramming did not complete), refer to **TCM Recovery** on the next page.

9. Disconnect the GR8 (battery charger) from the vehicle.

10. Select **Next**.

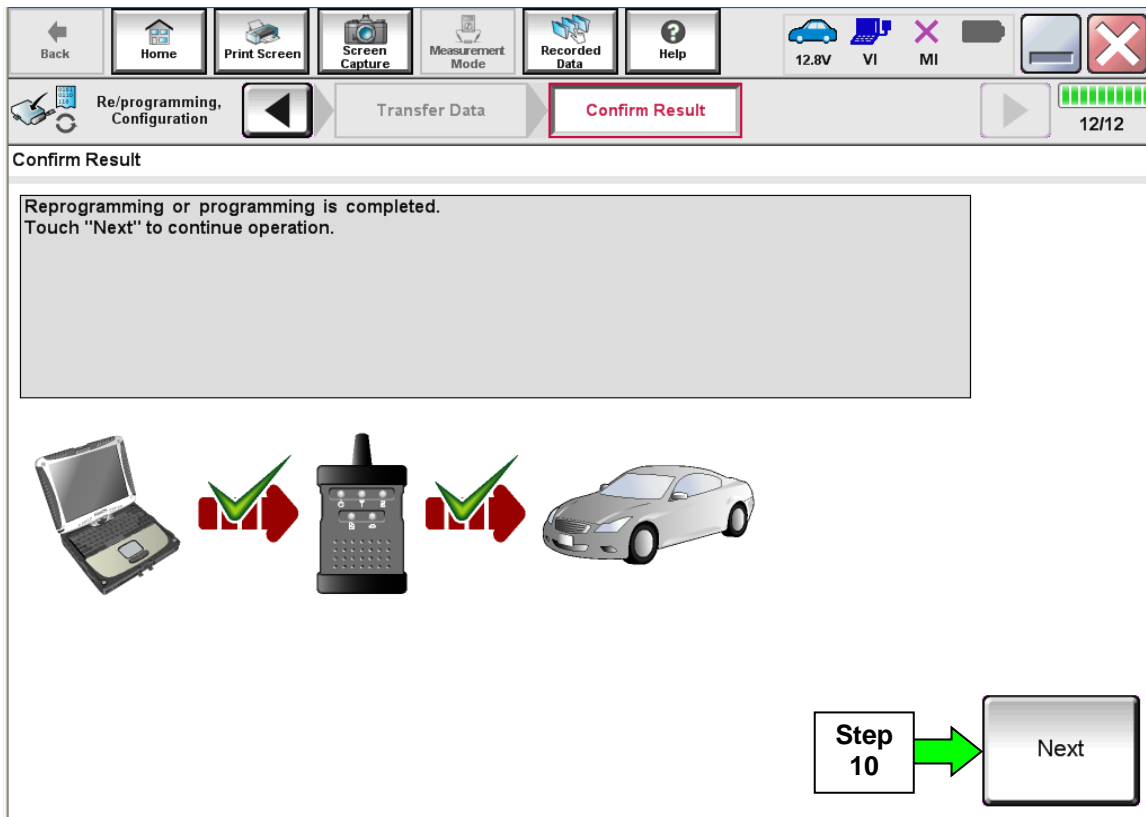


Figure 4

**NOTE:** Additional steps on page 8 are required before C-III plus will provide the final reprogramming confirmation report.

## TCM Recovery

**Do not disconnect the plus VI or shut down C-III plus if reprogramming does not complete.**

If reprogramming does not complete and the “!” icon displays as shown in Figure 5:

- Check battery voltage (12.0 - 15.5 V).
- Ignition is ON, engine OFF.
- External Bluetooth® devices are OFF.
- All electrical loads are OFF.
- **Select retry and follow the on screen instructions.**
- “Retry” may not go through on first attempt and can be selected more than once.

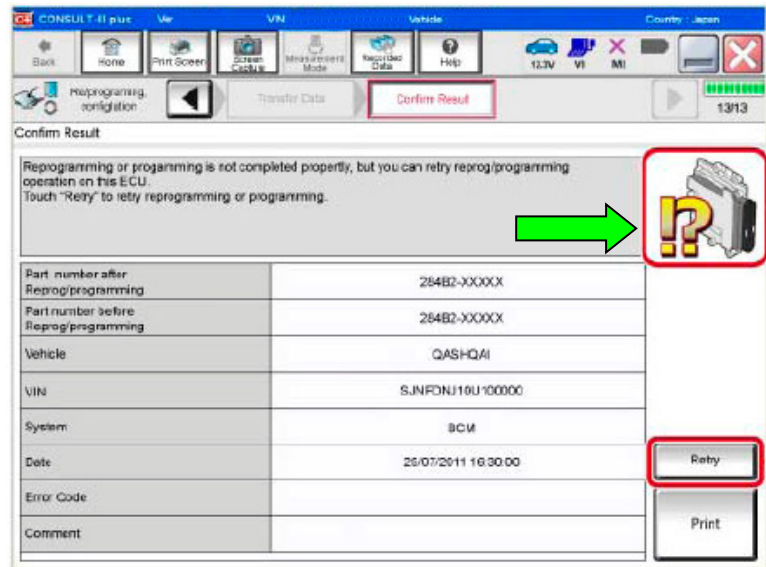


Figure 5

If reprogramming does not complete and the “X” icon displays as shown in Figure 6:

- Check battery voltage (12.0 - 15.5 V).
- CONSULT A/C adapter is plugged in.
- Ignition is ON, engine OFF.
- Transmission is in Park.
- All C-III plus / VI cables are securely connected.
- All C-III plus updates are installed.
- **Select Home, and restart the reprogram procedure from the beginning.**

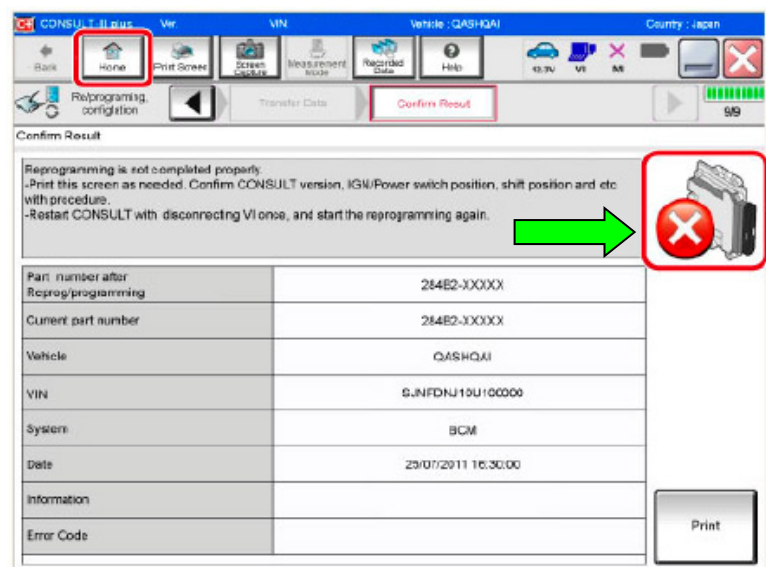


Figure 6

11. Follow the on-screen instructions to **Confirm Shift Lever Position Display**.
12. Follow the on-screen instructions to **Erase DTCs**.
13. When the entire reprogramming process is complete, the screen in Figure 7 will display.
14. Verify the before and after part numbers are different.
15. Print a copy of this screen (Figure 7) and attach it to the repair order for warranty documentation.
16. Select **Confirm**.

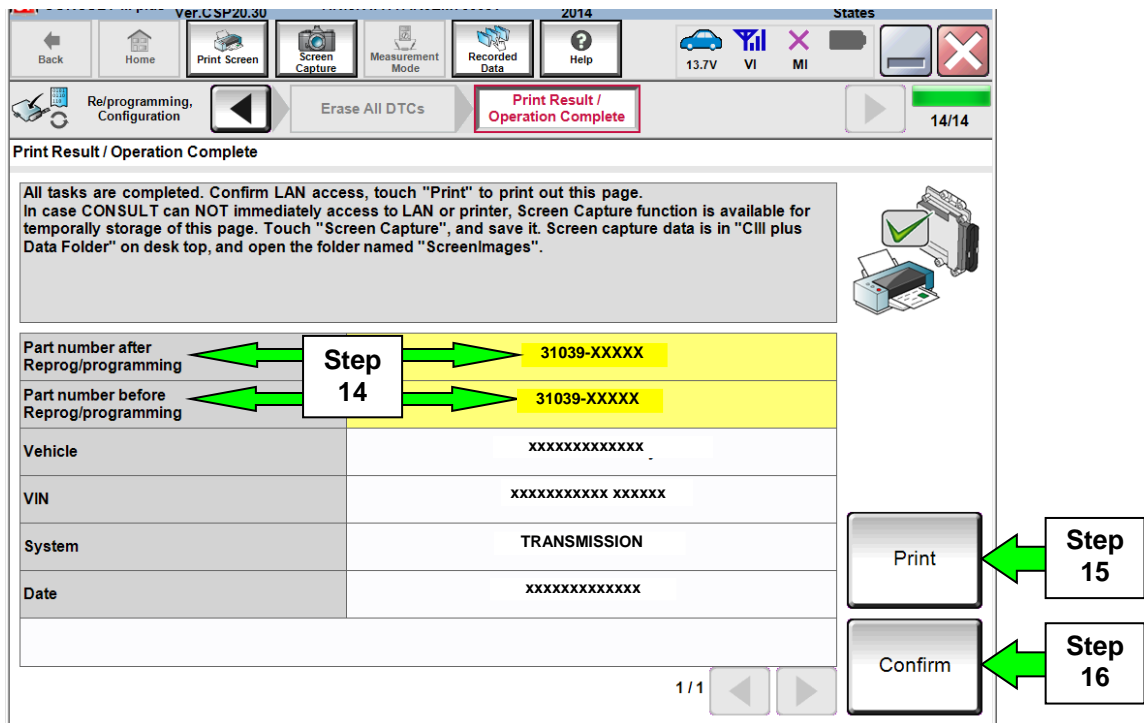


Figure 7

17. Close C-III plus.
18. Turn the ignition OFF.
19. Disconnect the plus VI from the vehicle.



## CLAIMS INFORMATION

Submit a Primary Part (PP) type line claim using the following claims coding:

DESCRIPTION	PFP	OP CODE	SYM	DIA	FRT
Reprogram Transmission Control Module	(1)	JX52AA	ZE	32	0.6

(1) Refer to the electronic parts catalog (FAST or equivalent) and use the Control Valve Assembly (31705-\*\*\*\*\*) as the Primary Failed Part (PFP).