



SERVICE BULLETIN

Classification:

RS16-016c

Reference:

NTB17-007c

Date:

August 25, 2017

2014 – 2016 ROGUE; OCCUPANT CLASSIFICATION SYSTEM RETROFIT

<p>This bulletin has been amended. Pages 15 and 17 have been revised. No other changes have been made. Please discard all previous versions of this bulletin.</p>

APPLIED VEHICLES: 2014 – 2016 Rogue (T32)

USA built – first 3 digits of the VIN are 5N1...

Korea built – first 3 digits of the VIN are KNM...

NOTE: Does not apply to Japan built Rogue (VIN starting with JN8...)

SERVICE INFORMATION

The information in this bulletin is provided for customers who have concerns with their Occupant Classification System (OCS) operation after all campaigns have been completed.

Follow the steps in this bulletin to determine if this OCS retrofit procedure is applicable to the vehicle you are working on.

DETERMINE IF OCS RETROFIT APPLIES

1. Check Service COMM to confirm if OCS reprogramming campaign has been completed (R1609 / NTB16-052).

Completed:

- Write on the repair order the date it was completed and by which dealer.
- Go to step 2.

Not Completed:

- Complete campaign R1609 / NTB16-052.
- No further action needed. OCS retrofit does NOT apply.

<p>Nissan Bulletins are intended for use by qualified technicians, not 'do-it-yourselfers'. Qualified technicians are properly trained individuals who have the equipment, tools, safety instruction, and know-how to do a job properly and safely. NOTE: If you believe that a described condition may apply to a particular vehicle, DO NOT assume that it does. See your Nissan dealer to determine if this applies to your vehicle.</p>
--

2. Verify and document the customer's concern (have the customer demonstrate the concern).

3. Using CONSULT-III plus, check for Airbag or OCS related DTCs.

No Airbag or OCS DTCs: go to step 4.

Airbag or OCS DTCs stored:

- Refer to the Electronic Service Manual (ESM), section SRC – SRS Airbag Control System, for diagnostic and repair information.

 - OCS retrofit does NOT apply.
-
4. If all of the following are confirmed:
 - Campaign R1609 / NTB16-052 has been completed.
 - Customer concern has been confirmed and documented.
 - No Airbag or OCS DTCs are stored.

Then

5. Perform the Service Procedure in this bulletin.

SERVICE PROCEDURE

WARNING: This procedure involves working under the passenger seat. The metal seat frame has sharp edges.

CAUTION: Handle interior trim carefully to avoid damage. Work with clean hands and clean tools to avoid dirt and stains. Use protective covers as needed.

IMPORTANT: Follow all cautions, warnings, and notes in the Electronic Service Manual (ESM) when working on or near a Supplemental Restraint System (SRS), such as an air bag or OCS components.

1. Turn the ignition ON, engine OFF.
2. Write down the radio settings.

Presets	1	2	3	4	5	6
AM						
FM 1						
FM 2						
SAT 1						
SAT 2						
SAT 3						
Bass	Treble		Balance	Fade	Spd Sen. Vol.	

3. Record (write down) any other customer settings that will be lost when the battery is disconnected.
 - Refer to the Electronic Service Manual (ESM) section PG-Power Supply, Ground, & Circuit Elements, for a listing of systems that may lose settings or memory when disconnecting the 12V battery.
 - Look in the PG section index for **ADDITIONAL SERVICE WHEN REMOVING BATTERY NEGATIVE TERMINAL**.
 - This list often includes items such as audio, HVAC, power windows, clock, etc.

4. Turn the ignition OFF.

5. Passenger seat removal:

- a. Disconnect both battery cables, negative cable first.
- b. Wait at least 3 minutes.
- c. Remove the passenger seat from the vehicle.
 - Refer to the ESM, section SE-Seat, for seat removal information.

6. Set the seat in a clean working area.

7. Remove the seatbelt buckle.

- Buckle is held on with one bolt.

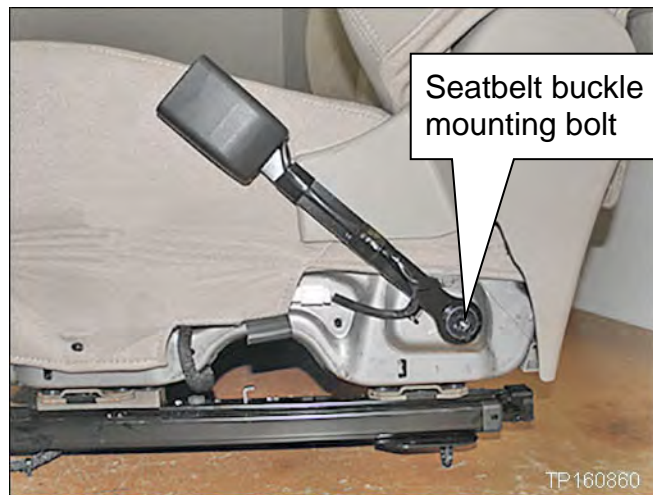


Figure 1

8. Unclip and raise the seat side trim.
9. Disconnect the seatbelt buckle electrical connector.

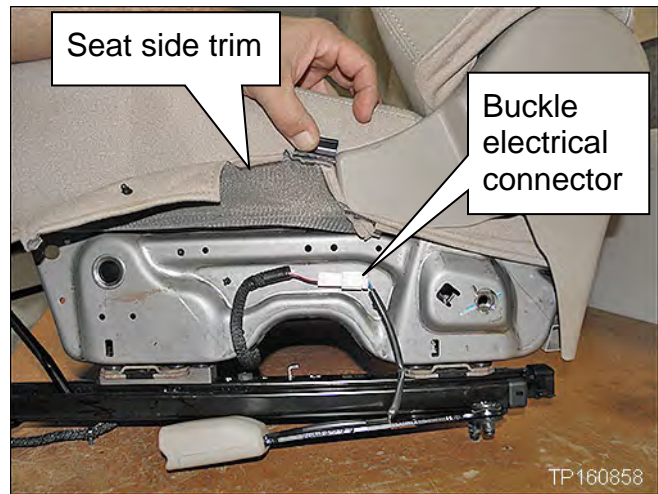


Figure 2

10. From under the seat, remove the old OCS harness and install the new one.
 - The OCS harness consists of the wiring and connectors between the OCS sensors, and OCS control unit.

IMPORTANT:

- a. Disconnect **one** OCS harness connector or mounting clip, then
- b. Connect the new OCS harness connector or mounting clip before moving to the next.
 - Disconnecting/connecting one at a time will ensure that the new harness is connected **exactly** as the old one.
 - Refer to images of the OCS harness on the next page.
 - Refer to images on pages 7 and 8 for exact harness mounting points.
 - **IMPORTANT:** There is one mounting clip that will need to be placed in a different location; it is shown in Figures 5 and 6 on page 8.

EXAMPLE

Old OCS harness and seatbelt buckle are removed from the seat.

EXAMPLE

New OCS harness and seatbelt buckle to be installed

Notice the new harness and buckle have a new branch with connector

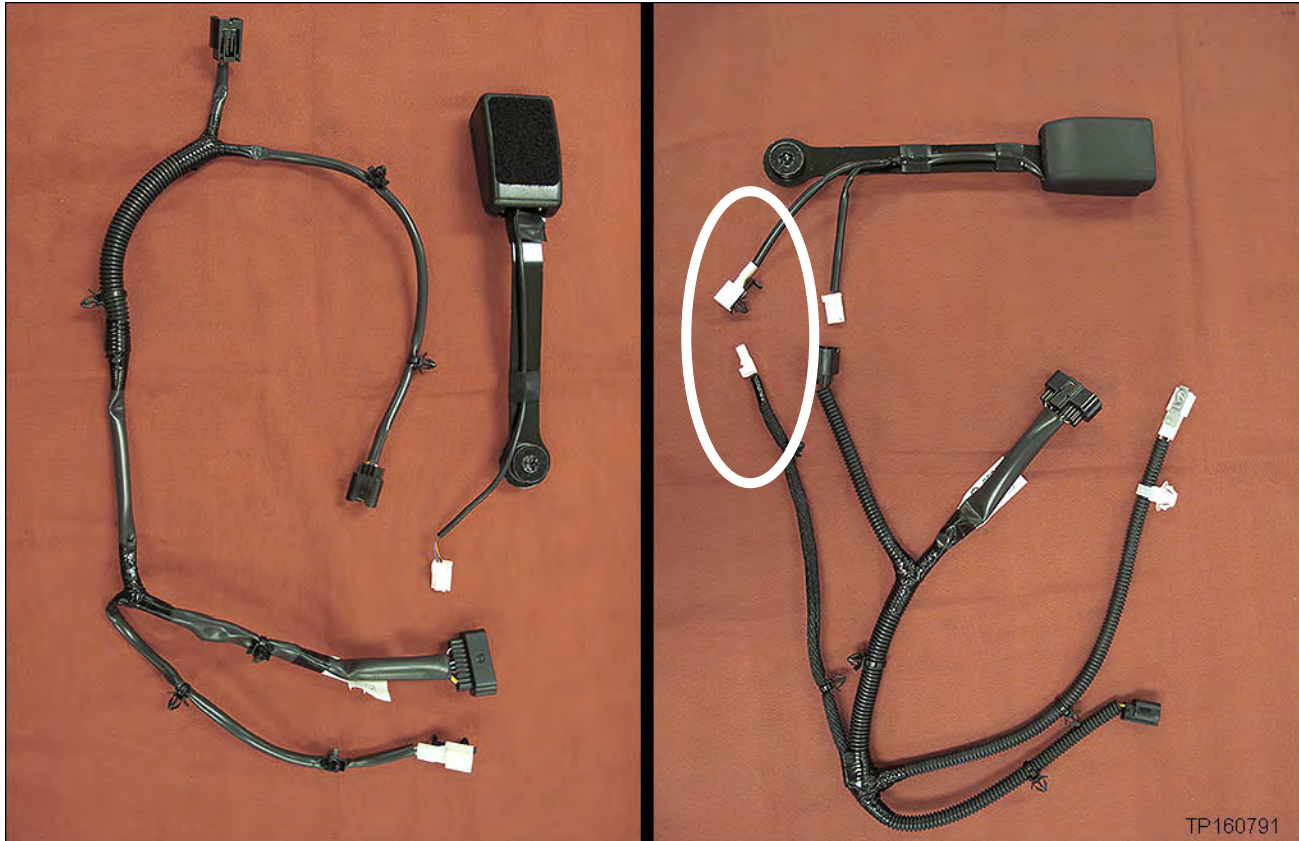


Figure 3

OCS Seat Harness Mounting Points

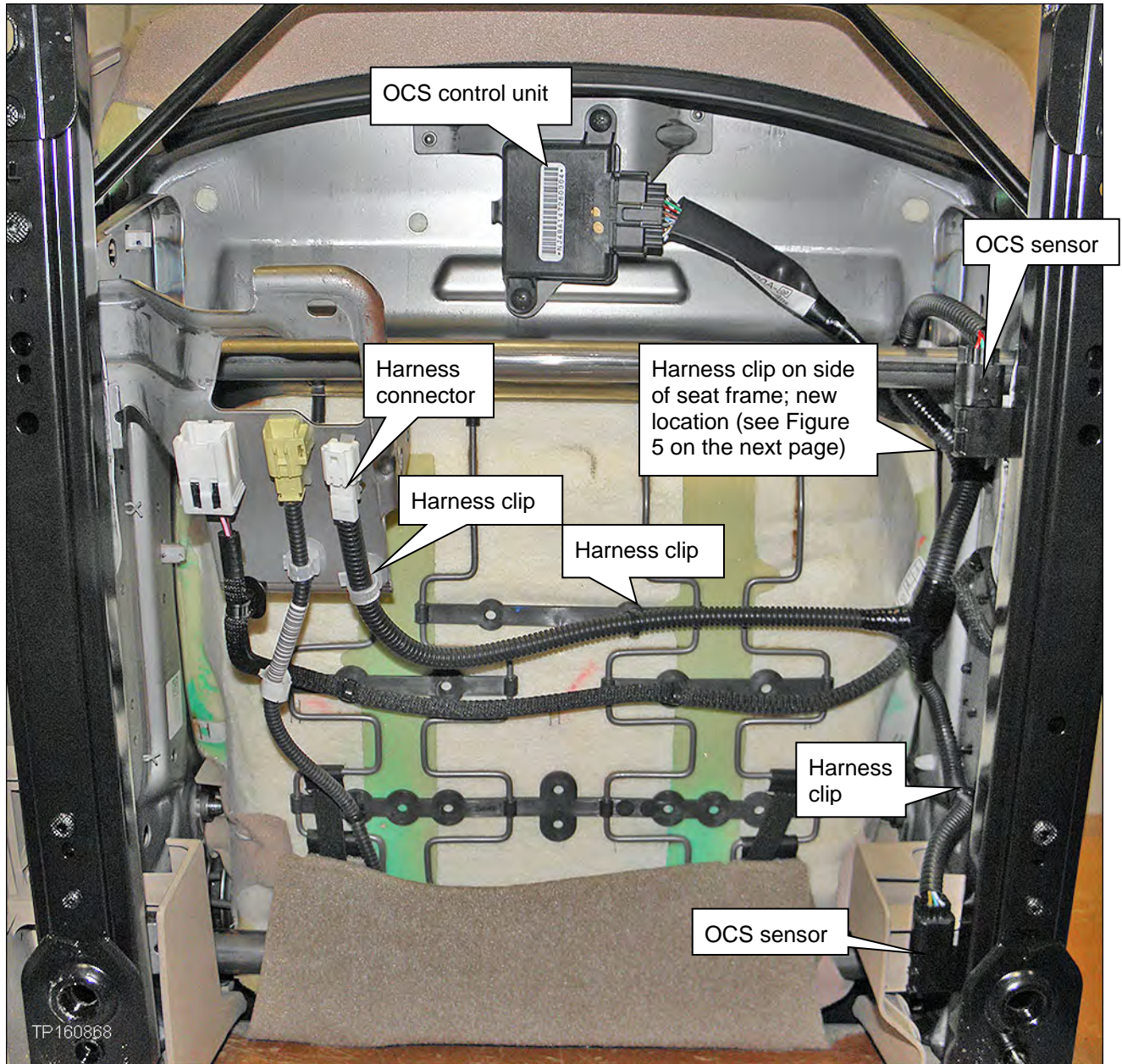


Figure 4

OCS Seat Harness Mounting Points

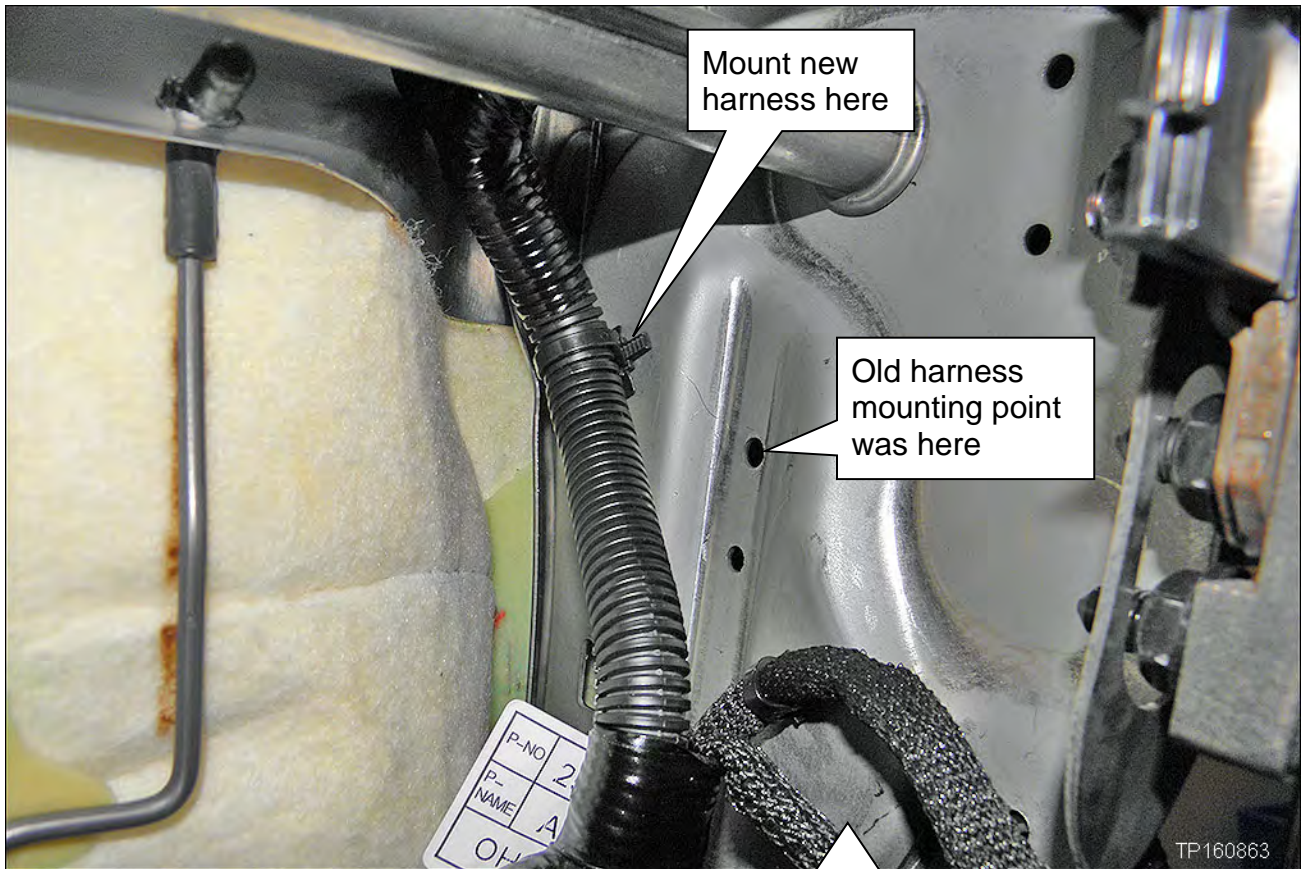


Figure 5

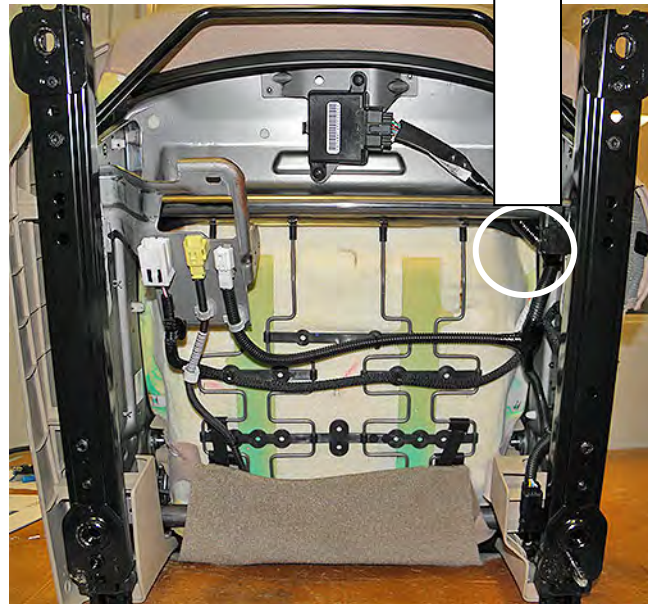


Figure 6

11. Replace the OCS control unit with the new one.

- OCS control unit is held on with 2 screws.
- The OCS control unit is located under the front edge of the seat.

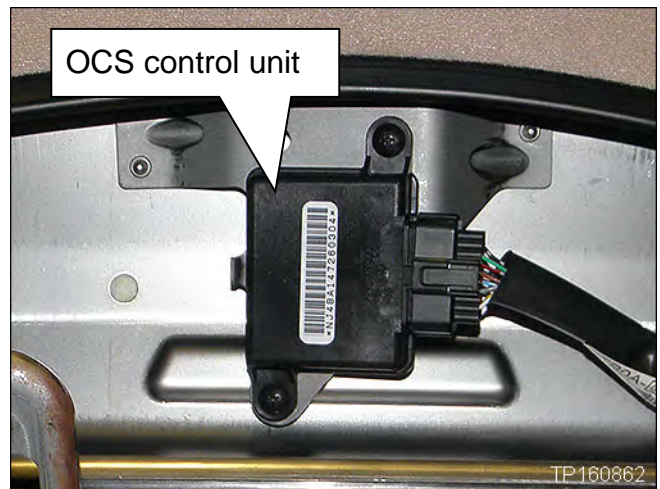


Figure 7

12. Install the new seatbelt buckle.

- Torque the mounting bolt to:
49 N·m (5.0 kg·m, **36 ft-lb**)

13. Attach the new branch connector from the buckle in the location shown.

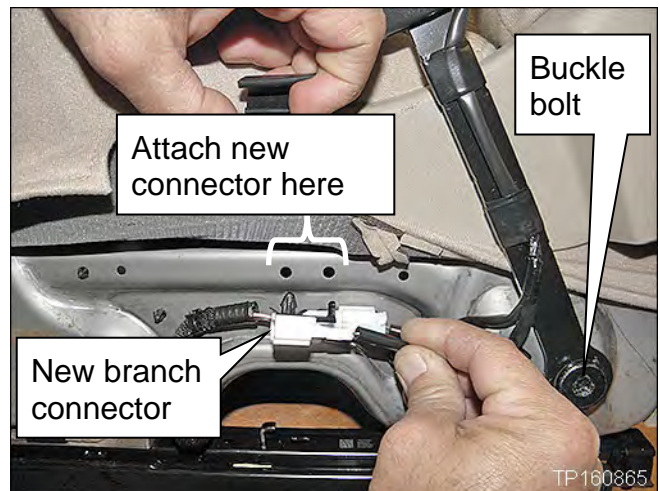


Figure 8

14. Route and connect the new harness branch as shown.

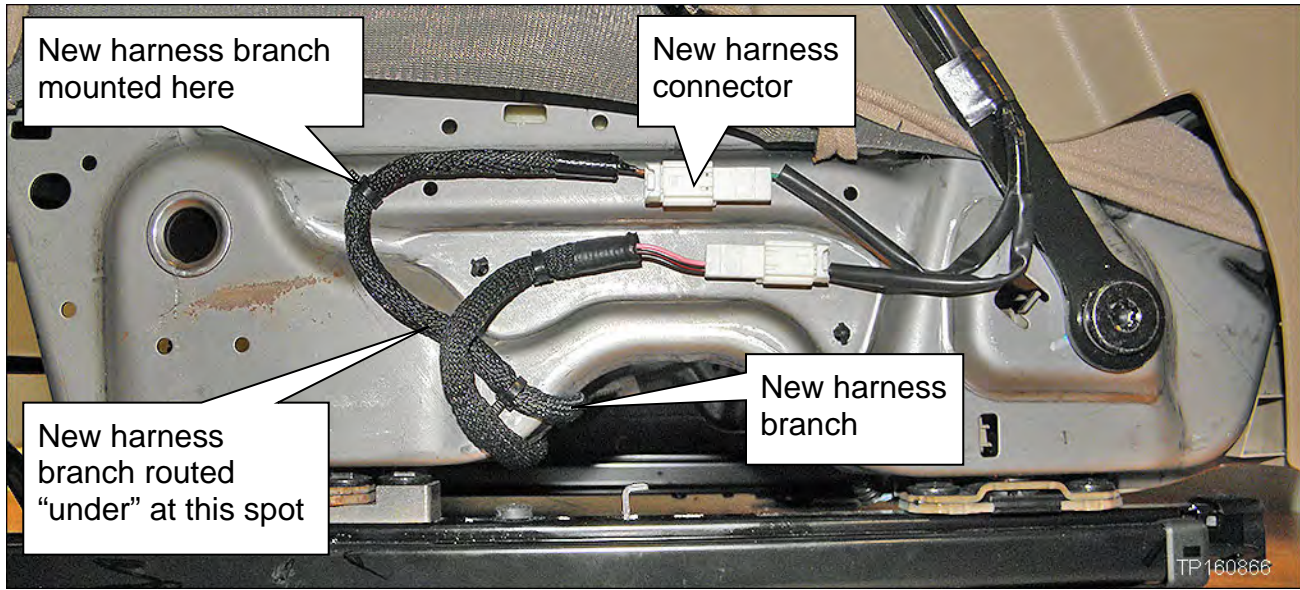


Figure 9

15. Reattach the seat side trim.

16. Reinstall the seat into the vehicle in reverse order of removal.

- Torque passenger seat mounting bolts to: 40 N•m (4.1 kg-m, **30 ft-lb**)

17. Reconnect the battery cables, positive cable first.

18. Reset/reinitialize systems as needed.

- Refer to the ESM section, PG – Power, Supply & Ground Elements for a listing of systems that require reset/initialization after reconnecting the 12V battery.
 - Look in the PG section index for **ADDITIONAL SERVICE WHEN REMOVING BATTERY NEGATIVE TERMINAL**.
 - This list often includes items such as audio, power windows, clock, etc.

19. Perform Zero Point Reset, using CONSULT III plus, on the next page.

Zero Point Reset

1. Prepare the vehicle for OCS zero point reset as follows:
 - **Level the vehicle.**
 - **No objects on the passenger seat or in the storage bin.**
 - **No occupants in the vehicle – including the servicing technician.**
 - PC is outside of the vehicle on a suitable support.
 - Do not set the PC on the vehicle.
 - Do not touch the vehicle during the OCS zero point reset.
 - Minimize vibrations of the vehicle.
2. Connect the plus VI to the vehicle.
3. Open / start CONSULT-III plus (C-III plus).
4. Turn the ignition ON, with engine OFF (engine not running/not in ready mode).
5. Wait for the plus VI to be recognized.
 - The Serial No. will display when the plus VI is recognized.
6. Select **Diagnosis (One System)**.
7. Scroll C-III plus (All systems) and select **OCCUPANT DETECTION**.

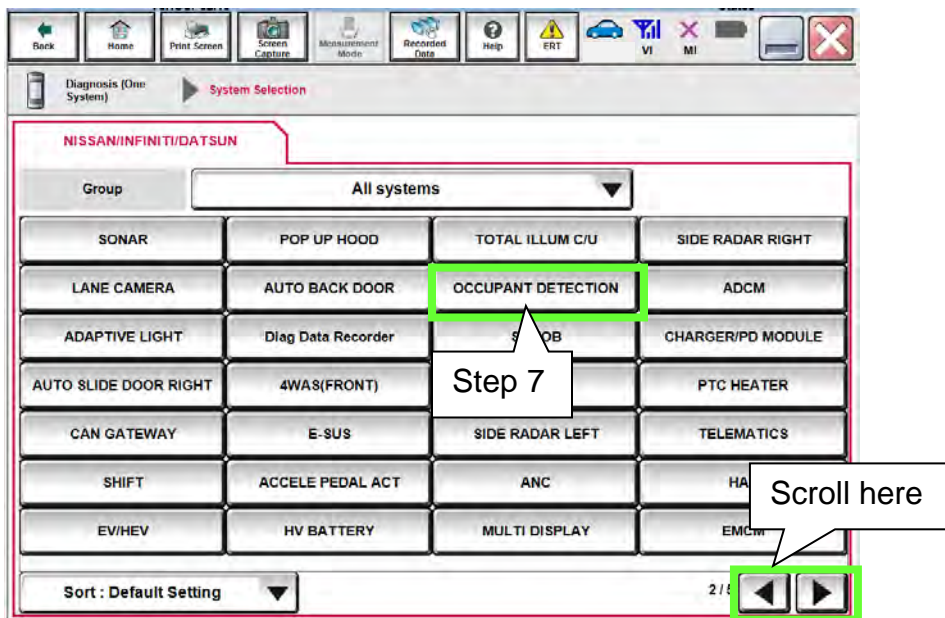


Figure 1A

8. Select **Zero point reset function**.

9. Select **Start**.

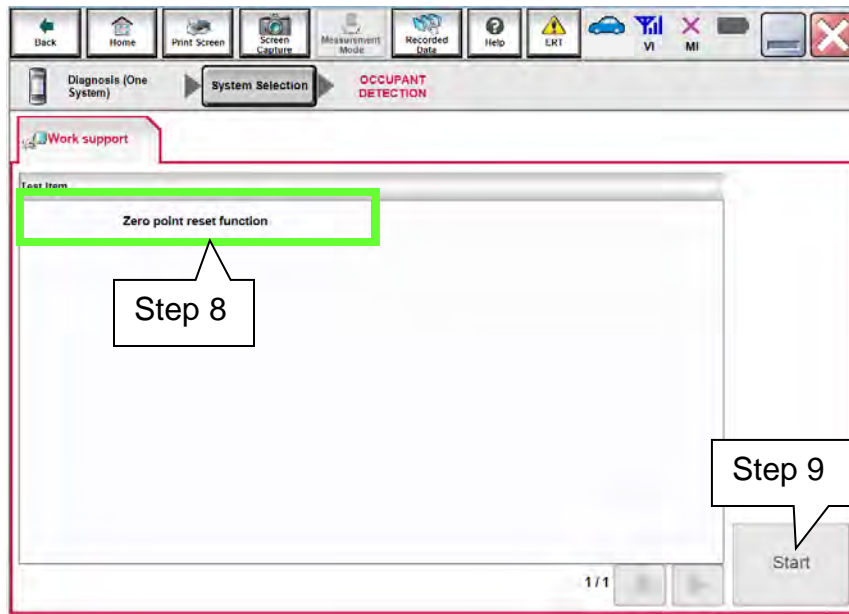


Figure 2A

10. Select **Next**.

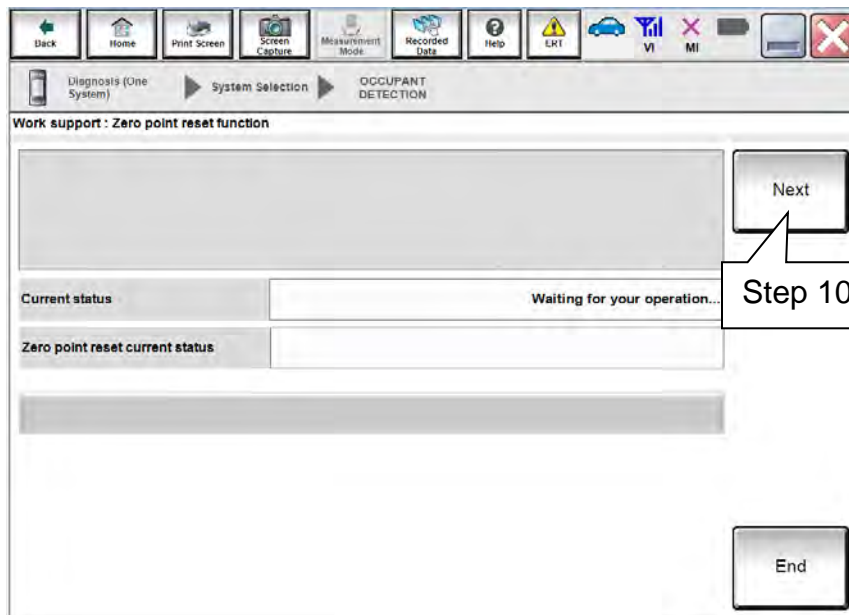


Figure 3A

11. Select **Start** and then proceed to step 12.

- After selecting **Start**, if Figure 5A is displayed:
 - a. Check the OCS control unit and confirm that harness connector is completely seated.
 - b. Turn the ignition OFF and then restart procedure from step 4 on page 11.

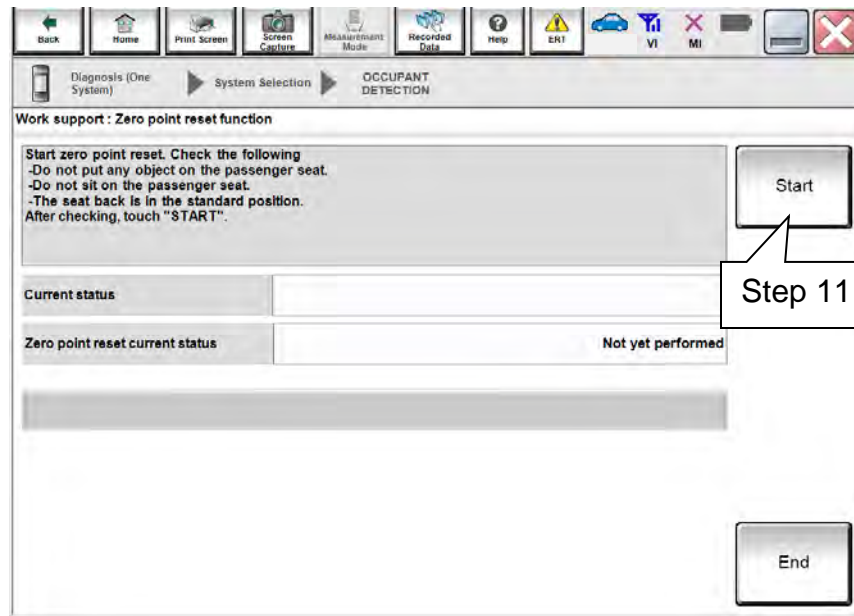


Figure 4A

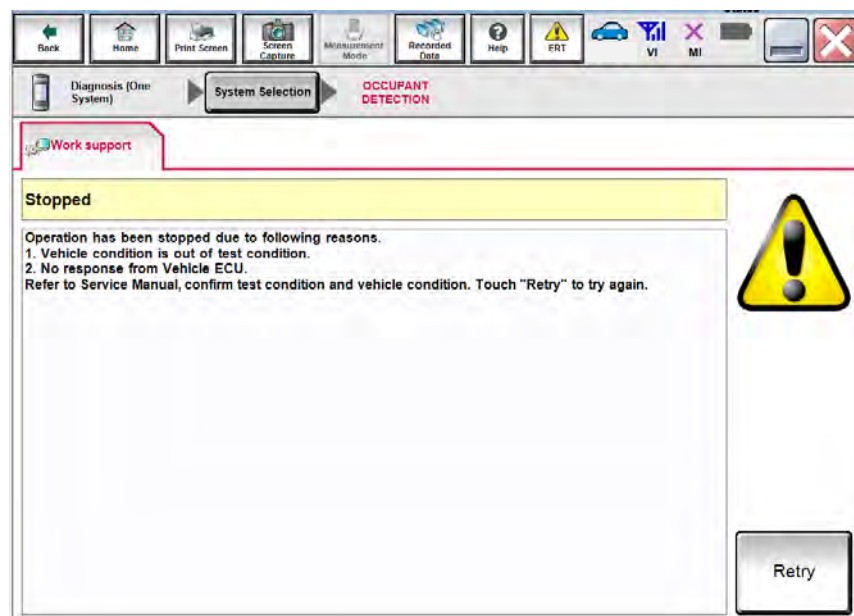


Figure 5A

12. Zero point reset will display “EXECUTING”.

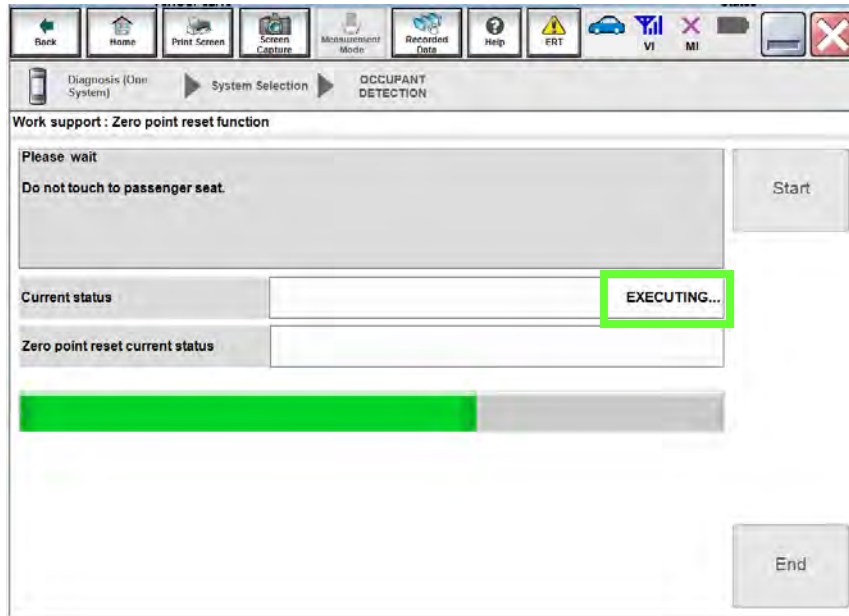


Figure 6A

13. When finished, "Completed" will display next to “Current status”.

- Select **End** and then proceed to step 14.

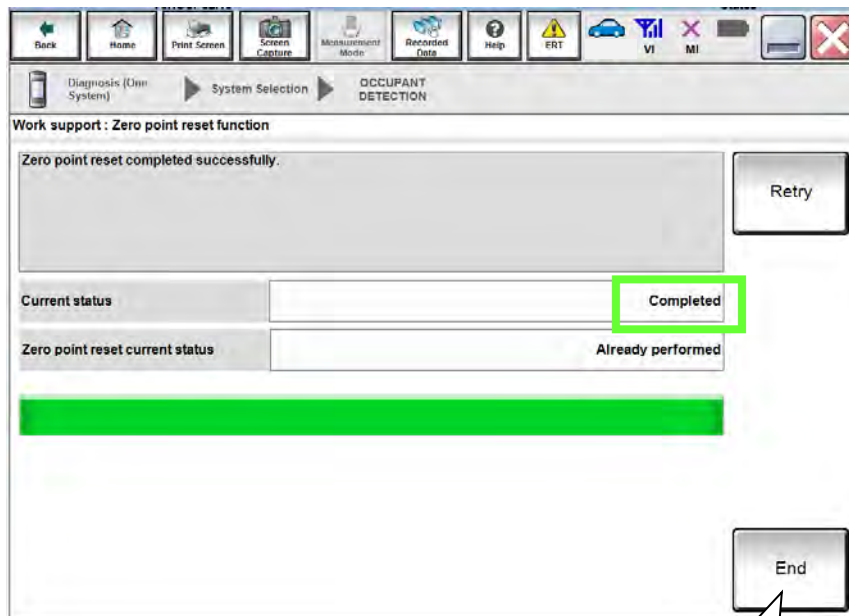




Figure 7A

End
Step 13

14. Turn the ignition OFF and then back ON and observe the air bag warning light and front passenger airbag status light:

- The air bag warning light  should illuminate for 7 seconds and then go out.
- The front passenger airbag status light  should illuminate for 7 seconds and then either stay illuminated or go out depending on the occupation of the front passenger seat.

Front Passenger Airbag Status Light Operation

CONDITION	DESCRIPTION	PASSENGER AIR BAG INDICATOR LIGHT	FRONT PASSENGER AIR BAG STATUS
Empty	Empty front passenger seat	ON (illuminated)	DISABLED
Nobody/Somebody	Bag or Child or Child Restraint or Small Adult in the front passenger seat	ON (illuminated)	DISABLED
Adult	Adult in front passenger seat	OFF (dark)	ENABLED

NOTE: If the air bag warning light or the front passenger airbag status light does not operate as described above there may be an issue not covered by this bulletin. Refer to ASIST and the appropriate Service Manual for additional diagnostic and repair information.

15. Provide the customer with a printed copy of FRONT PASSENGER AIR BAG STATUS LIGHT OPERATION (see last page).

PARTS INFORMATION

USA Built – First 3 digits of the VIN are 5N1.....

DESCRIPTION	PART NUMBER	QUANTITY
Controller Assy-Occupant Sensor (OCS Control Unit)	98856-9TC0A	1
Seatbelt Buckle – Black/Charcoal	86842-9TB8A	1
Seatbelt Buckle – Beige/Tan	86842-9TB8B	
OCS Harness	98854-9TB0A	1

Korea Built – First 3 digits of the VIN are KNM.....

DESCRIPTION	PART NUMBER	QUANTITY
Controller Assy-Occupant Sensor (OCS Control Unit)	98856-5HA0A	1
Seatbelt Buckle – Black/Charcoal	86842-9TB8A	1
Seatbelt Buckle – Beige/Tan	86842-9TB8B	
OCS Harness	98854-9TB0A	1

Japan Built – First 3 digits of the VIN are JN8.....

This bulletin does not apply to Japan built Rogue

CLAIMS INFORMATION

Submit a “CM” line claim using the following claims coding:

CM ID	DESCRIPTION	OP CODE	FRT
P7322	Perform OCS Retrofit	P73220	0.9 hrs

FRONT PASSENGER AIR BAG STATUS LIGHT OPERATION

NOTE: Please print this page and place a copy in the vehicle.

OCS SYSTEM OPERATION

The OCS system enables or disables the front passenger air bag depending on the weight applied to the front passenger seat. Front passenger air bag status (Enabled or Disabled) is indicated by the front passenger air bag status lamp pictured here



- When the front passenger seat is empty, the passenger air bag status lamp should be ON (illuminated) which means the passenger air bag is Disabled.
- When the front passenger seat is occupied by an adult, the passenger air bag status lamp should be OFF (dark) which means the passenger air bag is Enabled.
- When the front passenger seat is occupied by a child, a child restraint, or a small adult, the passenger air bag status lamp should be ON (illuminated) which means the passenger air bag is Disabled.