

### Meridian FEL Square Pump Mount Cover Replacement Procedure

**Date:** April 13, 2017  
**Bulletin Name:** FEL-TSB-033  
**Models:** Meridian Front Loader 78  
**Units Affected:** In-service dates of 1/1/2016 - 1/31/2017

#### Purpose:

McNeilus Truck and Manufacturing requires inspection for and installation of a new half of the Meridian Front Loader square pump mount cover. Some vehicles may already have the new design square pump mount cover. The old style cover had a gap that could cause a crack to form in the corner. The new style cover eliminates the gap with a weld so that a crack will not form.

#### Notice:

- This bulletin should be read and understood in its entirety before performing this update procedure.
- All procedures outlined in the bulletin must be performed by skilled service personnel. Refer to the product service manual for descriptions of maintenance procedures.

#### SAFETY NOTICE

Perform your company's Lockout/Tagout procedure. If your company does not have a Lockout/Tagout procedure, follow OSHA 1910.147 and 1910.146 Confined Space as appropriate.

#### SAFETY NOTICE

Use appropriate Personal Protective Equipment (PPE) as required by your company.

#### Tools and Equipment Required (Customer to supply own):

- Wrenches (see procedure for varying sizes)

#### Part Required per Truck:

As necessary after the inspection procedure, purchase the following part from McNeilus Truck and Manufacturing, Inc. by calling 888-686-7278.

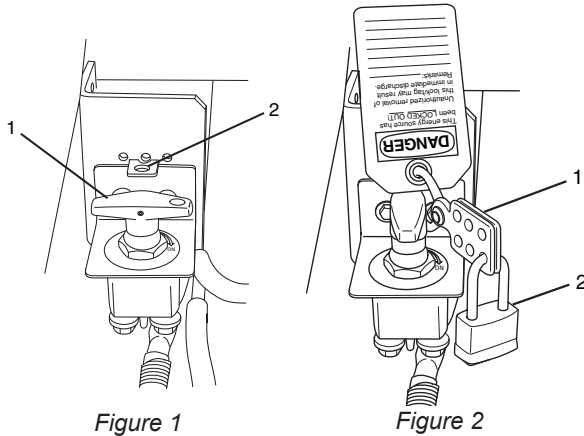
Item	Part Number	Description	Qty.
1	1552174	COVER, MTG, BRKT, CV, SHAFT, WLDT	1

## Procedure 1: Safety Set-Up

1. Place unit on a flat surface, block truck tires, and observe all conditions of the Safety Notice concerning Lockout/Tagout posted in this bulletin.
2. Battery Disconnect Switch

If your vehicle is equipped with a battery disconnect switch, it is located near the battery box. Use the battery disconnect switch when performing any maintenance so the vehicle cannot accidentally be started.

1. Turn the battery disconnect switch (Figure 1, Item 1) counterclockwise so the hole on the switch aligns with the hole in the bracket (Figure 1, Item 2).
2. Install the safety lockout device ring (Figure 2, Item 1) through the holes on the battery disconnect switch and the bracket.
3. Install a padlock (Figure 2, Item 2) onto the safety lockout device ring, lock it, and put the key in your pocket. If more than one person is working on the vehicle, each person must install his or her own padlock.



### Battery Cable Disconnect

If your vehicle is not equipped with a battery disconnect switch, disconnect the negative (black) battery cable first, then disconnect the positive (red) cable.

<b>⚠ WARNING</b>	
<b>For trucks without a battery disconnect switch, to prevent accidental vehicle start-up, which could cause death or serious injury, disconnect battery cables (negative cable first) before proceeding.</b>	
<b>Disconnect negative (-) battery cable first. If positive (+) cable should contact ground with negative (-) cable connected, the resulting sparks can cause a battery explosion, which could result in death or serious injury.</b>	

## Procedure 2: Inspection and installation of the new square pump mount cover piece

1. Locate the hydraulic pump CV drive shaft on the vehicle.
2. Inspect the square pump mount cover to determine if the new half is already installed. See Figure 3 for illustrations of the old style and the new style. The new style does not have a gap between the top piece and the side piece.
  - If the new style is installed, no further action is required and this bulletin is complete. Remove your company's Lockout/Tagout per your company's procedure. If your company does not have a Lockout/Tagout procedure, follow OSHA 1910.147 and 1910.146 Confined Space as appropriate. Return vehicle to service.
  - If the old style is installed, purchase the new style cover from McNeilus Truck and Manufacturing, Inc. and continue with the rest of this bulletin to replace the old style cover with the new style cover.

### Square Pump Mount Cover

#### Old Style

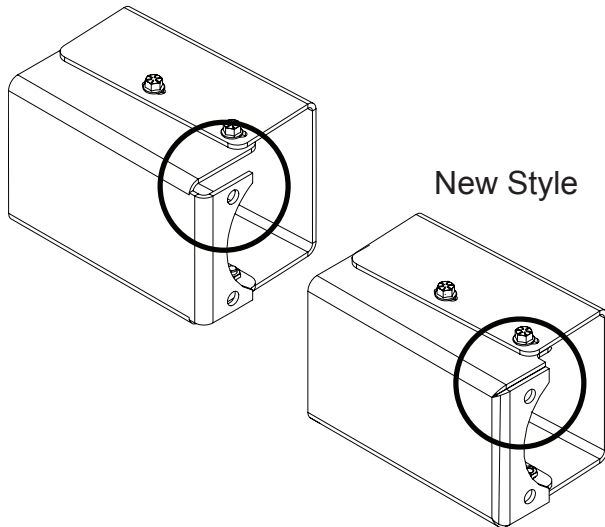


Figure 3

3. Remove and retain the hardware (located on topside and bottom side of the cover) (Figure 4, Item 1) from the square Pump Mount cover (Figure 4, Items 2 and 3).
4. Remove and retain the hardware connecting the square pump mount cover to the pump (hardware not shown, but location shown in Figure 4, Item 4).
5. Remove both halves of the square pump mount cover (Figure 4, Items 2 and 3).
6. Retain the pump mount cover half that **was not connected** to the pump (Figure 4, Item 2).
7. Discard the pump mount cover half that **was connected** to the pump (Figure 4, Item 3).

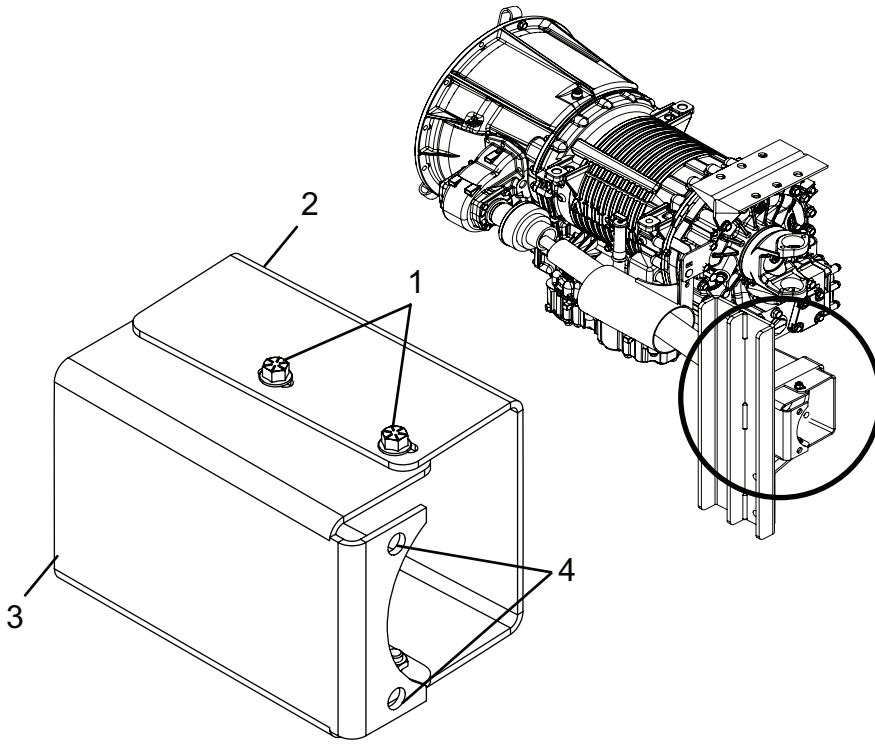


Figure 4

8. Using appropriate wrenches, install the new half of the pump mount cover (P/N 1552174) (Figure 5, Item 1) using the retained hardware (Figure 5, Item 2) to the pump mount support plate (Figure 5, Item 3).

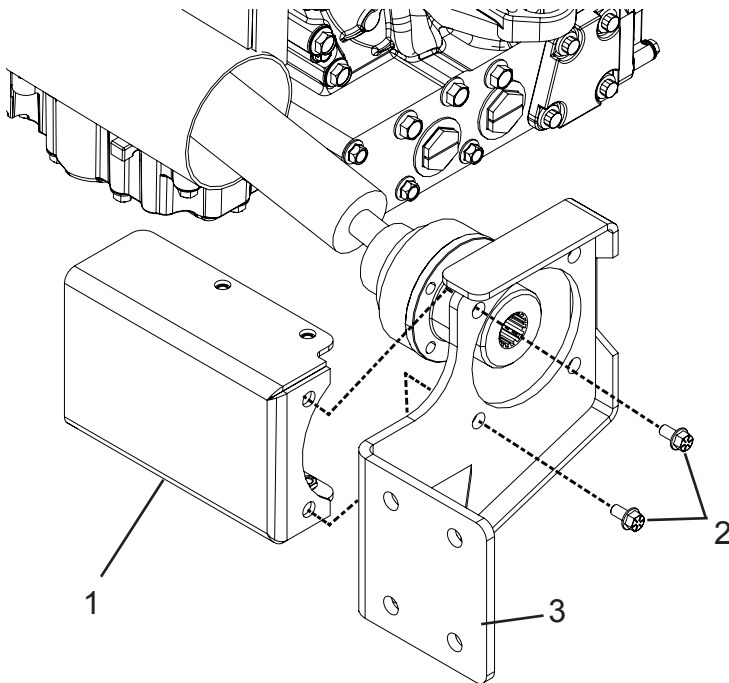


Figure 5

9. Install the existing half of the pump mount cover (Figure 6, Item 1) using the retained hardware on the top and bottom (Figure 6, Item 2). Use a torque wrench to torque the hardware to 28 ft.-lbs.

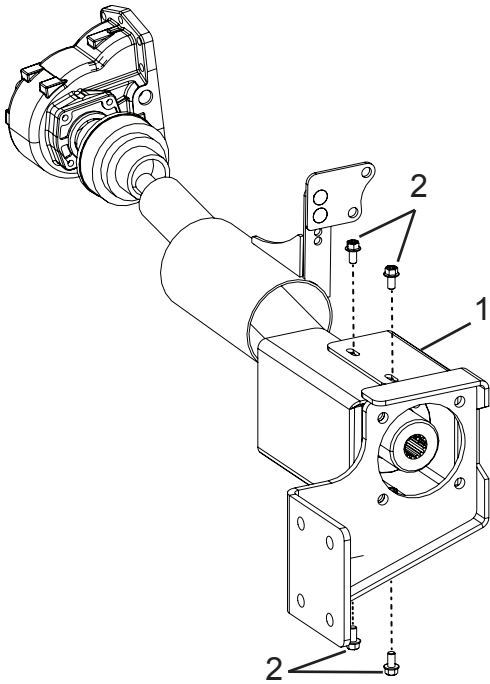


Figure 6

10. Procedure is complete.
11. Remove your company's Lockout/Tagout per your company's procedure. If your company does not have a Lockout/Tagout procedure, follow OSHA 1910.147 and 1910.146 Confined Space as appropriate. Remove chocks from vehicle tires. Reconnect the battery.
12. Return vehicle to service.

## Reimbursement of Costs:

Upon receipt of the parts, complete the square pump mount cover replacement procedure for each affected unit. The time of accomplishment may vary due to a number of factors; however, the estimated time for completion is 1 hour under normal circumstances. Affected units shall be repaired using the customer's own qualified service technicians.

### Labor Reimbursement:

In order to receive credit if you qualify, claims must be submitted through the normal McNeilus Warranty claim system\*. Claims must be received within 30 days of the repair. Claims must include the McNeilus serial number of the truck, the customer asset number, and the number of this bulletin. NOTE: One claim per truck.

#### Labor Reimbursement: 1 Hour for Inspection and Installation

### Parts Reimbursement:

Parts and ground shipping will be reimbursed to the customer. Parts necessary for this repair must be ordered from McNeilus Parts at 888-686-7278.

Claims must be submitted through the normal McNeilus Warranty claim system. Claims must be received within 30 days of the repair. Claims must include the McNeilus serial number of the truck, the customer asset number, and this bulletin's number. NOTE: One claim per truck.

### Deadline:

If required, this service update should be performed at the earliest opportunity. The following terms must be met to qualify for reimbursement cost.

- For reimbursement, a warranty claim form with proof of installation must be submitted by: **October 13, 2017**

### Contact:

If you have questions or need further information, please contact a McNeilus National Service Representative at 888-686-7278.

## Continuous Improvement:

The change included in this bulletin is part of the McNeilus® Continuous Improvement Process.

*McNeilus® Company's quality policy is Providing Customer Satisfaction through Innovative Products, Dedicated Service, and a constant focus on Continuous Improvement.*

***"The Customer is our Boss!"***



**(888) 686-7278**

**[www.streetsmartparts.com](http://www.streetsmartparts.com)**