

ADDRESSEES	: Owners and operators of coaches mentioned under "Application"
VEHICLE MODEL	: C2045, CX35, CX45, TX40, TX45
MANUAL CHAPTER	: 10.66 Body and accessories – Luggage and maintenance doors
BULLETIN TYPE	: Service information
DATE	: August 23 rd , 2017
SUBJECT	: To change weather strip mounting lip of luggage compartment door
TERMS & CONDITIONS	: This service bulletin does not entitle to any reimbursement.

APPLICATION:

This Service information bulletin applies to the above mentioned vehicle models.

DESCRIPTION

1. The luggage compartment door frame and skin of the above-mentioned units have been manufactured from anodized aluminum for increased corrosion resistance, improved surface hardness, to allow dyeing, and to promote paint adhesion.
2. However, the lower section of the door frame mounting lip for the weather strip has been reported to be prone to premature wear because of corrosion (Figures 1 and 2).

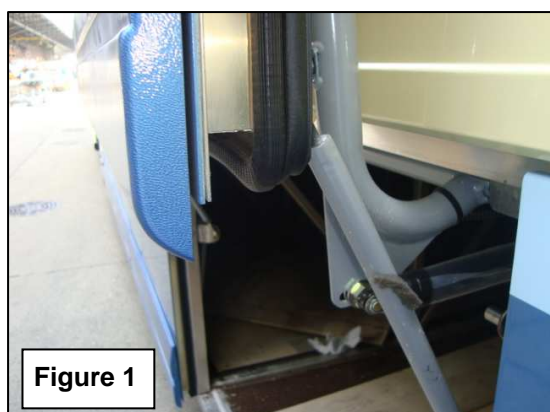


Figure 1

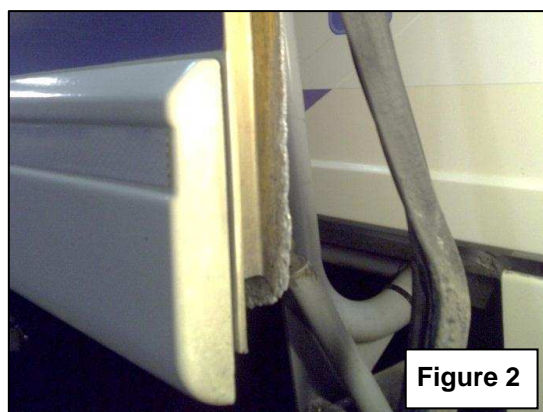


Figure 2

3. Field experience has shown that the road salts used in northern climates as de-icing and anti-icing chemicals for winter road maintenance may contribute to this exceptional corrosion rate.

Continued on next page.

4. To address the issue, Van Hool have released a Service Bulletin, which allows to repair the damage without replacing the door assembly. Should repair of the weather strip mounting lip prove to be necessary, please refer to the material's list and apply the step-by-step instructions contained herein.
5. Also, it is recommended to set up some checks at regular service intervals to note any potential signs of corrosion.

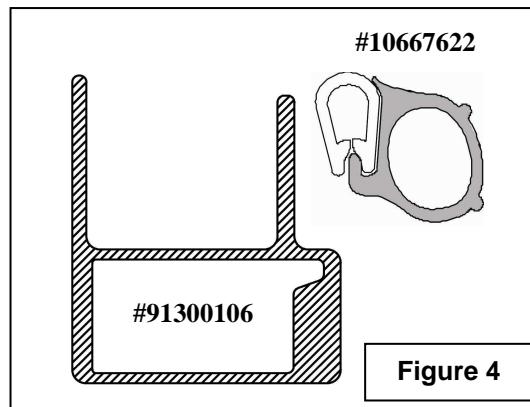
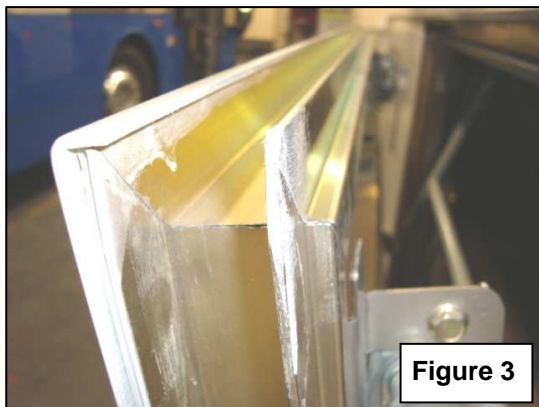
MATERIAL FOR REPAIR:

VH reference	Description	Qty.
11522980	Angle, stainless steel 25 x 25 x 3 mm, length: 2 m (6 ft)	A/R
11269772	Rivet, 4.8 x 20 mm, stainless steel	A/R
660634611	Washer M6	A/R
660193031	Adhesive, Sika 221	A/R
10667622	Weather strip	A/R
11171613	Adhesive corrosion protection tape 25 mm, length: 33 m	A/R

- Material may be purchased through regular channels.
- Parts/Waste disposal: discard old material according to applicable environmental regulations.

ABOUT THE DOOR FRAME:

- The anodized aluminum channels composing the door frame have two lips (Figures 3 and 4): one lip has been glued to the door skin; one lip is used to retain the weather strip.
- These channels should not be detached from the skin during repair.
- The corrosion affects the door frame lower section only.



JOB REQUIREMENTS:

1. Technician's expertise and job supporting information:

- This job has to be carried out by a technician who is proficient in body and trim repair
- To remove/reinstall a luggage compartment door the aid of an assistant is required.
- For more information refer to the service literature that comes with the vehicle and is available through the Van Hool Customer portal..

Continued on next page.

2. Special tools, equipment or services:

- This job does not require any special tools, equipment nor services.

PROCEDURE:

If you do not have the expertise to carry out present procedure, do not hesitate to go to your nearest ABC Customer Care and Parts Source service center.

1. Preparations:

- Park the coach safely, apply the parking brake, stop the engine, switch off all systems and turn off the battery master switch.
- Install a "DO NOT OPERATE" warning message on the instrument panel.
- Read the entire procedure before beginning to work.



WARNING!

Observe safe shop practices at all times.

The door assembly has a considerable weight. To avoid personal injury and/or damage to the vehicle or component, use suitable lifting equipment and work with an assistant to handle it.

2. Procedure guidelines/equipment condition:

- Central door lock actuator pneumatic line disconnected from door lock.
- Side marker lamp disconnected from door (if fitted).
- Door assembly detached from the J-link and removed from the vehicle.
- Door placed with the skin on a suitably sized work surface covered with clean soft material (e.g. cardboard) so as not to damage the paint work.

3. To repair the weather strip mounting lip:

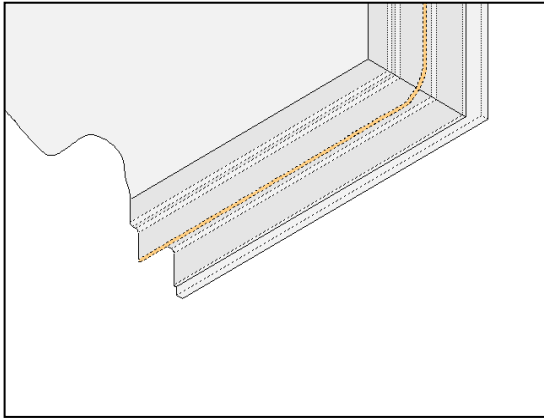
Step	Action
1	Detach the weather strip from the door in its entirety.
2	Determine the extent of the corrosion damage and mark the sections to be removed. 

Figure 5

Continued on next page

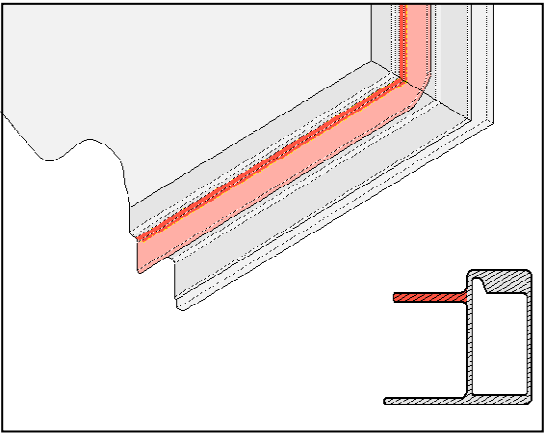
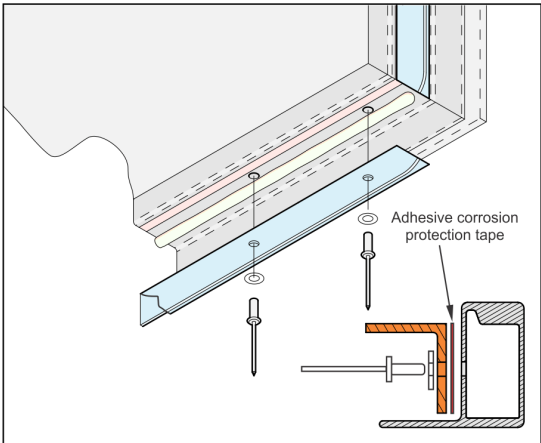
3	Using the actual dimensions and shape of the undamaged sections of the mounting lip as a reference, make a template to serve as a model for a replacement lip.
4	<p>Starting with straight cuts at right angles, remove the affected sections of the lip from the door frame channel with a reciprocating saw.</p> 
5	Dress the edge of the channel with a coarse file. Finish the surface with a flap wheel angle grinder.
6	Using the template and a suitable length of stock angle fabricate a replacement lip for the section removed. Trial fit the new section and dress to suit.
7	Place the new mounting lip on the channel and clamp it down with C-clamps. Adjust position for the new lip to be flush with the existing mounting lip.
8	Drill 5 mm diameter holes through the channel to accept the rivets.
9	Remove the new lip from the channel.
10	Apply the adhesive corrosion protection tape to the base of the new lip.
11	<p>Attach and secure the new lip to the channel with the rivets and the washers from the kit.</p> 

Figure 6

Figure 7

Continued on next page

<p>12</p>	<p>Coat the new lip with corrosion inhibiting primer, followed by corrosion inhibiting paint. Allow to cure fully between coatings.</p> <div data-bbox="603 264 1145 680" data-label="Image"> </div> <p style="text-align: right;">Figure 8</p>
<p>13</p>	<p>Reinstall the weather strip and interlocking piece.</p>
<p>14</p>	<p>Reinstall the door and check alignment. Correct as necessary.</p>
<p>15</p>	<p>Reconnect the central locking pneumatic line.</p>
<p>16</p>	<p>Reconnect the side marker lamp wiring.</p>

Procedure complete.

Continued on next page

INFORMATION HANDLING

Important additions and modifications regarding technical information not yet included in the manual will be communicated through Service Bulletins.

VAN HOOL CUSTOMER PORTAL:

Consult the Van Hool customer portal for the latest service documentation. Beside the maintenance manual, you will also find the operating manual and the spare parts catalogue of your vehicle on the customer portal. The customer portal is accessible through www.vanhool.be, and only with a code (password) from Van Hool. If you do not have a password yet, request it by using the link on the Van Hool website.