

Field campaign

Topic	Supersports 17MY Exterior Mirror Remote Fold Feature (ASW 09.17) (SC17/15)
Market area	Russische Föderation (5RU),Australia E04 Bentley rest Asia and Australia (6E04),Germany E02 Bentley rest Europe (6E02),Russian Federation 935 Volkswagen Group RUS (6935),United Arab Emirates E06 Bentley Middle East and Africa (6E06),United Kingdom E01 Bentley UK (6E01),United States E05 Bentley USA and rest America (6E05)
Brand	Bentley
Transaction No.	2048676/1
Campaign number	EA93
Note	
Type	Workshop Campaign
US code	

Vehicle data

Supersports

Sales types

Type	MY	Brand	Designation	Engine code	Gearbox code	Finaldrive code
3935AB	2017	E		*	*	*
3945AB	2017	E		*	*	*

Chas is numbers

Manufacturer	Filler	Type	Filler	MY	Factory	From	To	Prod from	Prodto
SCB	FF6	3W	6	H	C	059546	059546		
SCB	FF6	3W	8	H	C	059547	059547		
SCB	FF6	3W	X	H	C	059548	059548		
SCB	GF2	3W	5	H	C	059549	059549		
SCB	FF6	3W	1	H	C	059552	059552		
SCB	FF6	3W	8	H	C	062030	062030		
SCB	GB3	ZA	3	H	C	062222	062222		
SCB	FF6	3W	1	H	C	062385	062385		
SCB	GF2	3W	6	H	C	062444	062444		
SCB	FF6	3W	9	H	C	062456	062456		
SCB	GF2	3W	2	H	C	062473	062473		
SCB	GF2	3W	5	H	C	062483	062483		
SCB	GF2	3W	3	H	C	062532	062532		
SCB	FF6	3W	1	H	C	062533	062533		
SCB	GF2	3W	7	H	C	062534	062534		
SCB	FF6	3W	5	H	C	062535	062535		
SCB	FF6	3W	7	H	C	062536	062536		
SCB	FF6	3W	9	H	C	062537	062537		
SCB	FF6	3W	0	H	C	062541	062541		
SCB	FF6	3W	4	H	C	062980	062980		
SCB	FF6	3W	4	H	C	063143	063143		
SCB	FF6	3W	9	H	C	063235	063235		
SCB	FF6	3W	7	H	C	063248	063248		
SCB	FF6	3W	4	H	C	063319	063319		
SCB	GF2	3W	X	H	C	063452	063452		
SCB	FF6	3W	3	H	C	063456	063456		
SCB	FF6	3W	6	H	C	063533	063533		
SCB	FF6	3W	5	H	C	063541	063541		
SCB	FF6	ZA	4	H	C	063543	063543		
SCB	FF6	3W	2	H	C	063545	063545		
SCB	FF6	3W	6	H	C	063547	063547		
SCB	FF6	3W	1	H	C	063553	063553		
SCB	FF6	3W	6	H	C	063564	063564		

SCB	FF6	3W	4	H	C	063577	063577		
SCB	FF6	3W	8	H	C	063582	063582		
SCB	FF6	3W	5	H	C	063586	063586		
SCB	FB7	ZA	7	H	C	063604	063604		
SCB	FF6	3W	9	H	C	063607	063607		
SCB	GF2	3W	1	H	C	063615	063615		
SCB	FF6	3W	3	H	C	063621	063621		
SCB	FF6	3W	8	H	C	063629	063629		
SCB	FF6	3W	7	H	C	063637	063637		
SCB	FF6	3W	6	H	C	063662	063662		
SCB	FF6	3W	6	H	C	063676	063676		
SCB	FF6	ZA	9	H	C	063683	063683		
SCB	FF6	3W	2	H	C	063688	063688		
SCB	FF6	3W	8	H	C	063694	063694		
SCB	FF6	3W	7	H	C	063699	063699		
SCB	FF6	3W	7	H	C	063704	063704		
SCB	FF6	3W	6	H	C	063709	063709		
SCB	FF6	3W	3	H	C	063716	063716		
SCB	FF6	3W	8	H	C	063727	063727		
SCB	FF6	3W	1	H	C	063732	063732		
SCB	FF6	3W	2	H	C	063738	063738		
SCB	FF6	3W	6	H	C	063743	063743		
SCB	FB7	ZA	9	H	C	063748	063748		
SCB	FF6	3W	9	H	C	063753	063753		
SCB	FB7	ZA	1	H	C	063758	063758		
SCB	FF6	3W	1	H	C	063763	063763		
SCB	FF6	3W	0	H	C	063768	063768		
SCB	FF6	3W	X	H	C	063776	063776		
SCB	FF6	3W	9	H	C	063784	063784		
SCB	FB7	ZA	1	H	C	063792	063792		
SCB	FB7	ZA	0	H	C	063802	063802		
SCB	FF6	3W	6	H	C	063807	063807		
SCB	FF6	3W	X	H	C	063812	063812		
SCB	FB7	ZA	4	H	C	063818	063818		
SCB	FF6	3W	6	H	C	063824	063824		
SCB	FF6	3W	9	H	C	063834	063834		
SCB	FB7	ZA	X	H	C	063841	063841		
SCB	FF6	3W	1	H	C	063858	063858		
SCB	FB7	ZA	9	H	C	063863	063863		
SCB	FB7	ZA	8	H	C	063868	063868		
SCB	FF6	3W	8	H	C	063873	063873		
SCB	FF6	3W	7	H	C	063878	063878		
SCB	FF6	3W	4	H	C	063885	063885		
SCB	FF6	3W	X	H	C	063891	063891		
SCB	FF6	3W	0	H	C	063897	063897		
SCB	FF6	3W	0	H	C	063902	063902		
SCB	FF6	3W	X	H	C	063907	063907		
SCB	FF6	3W	7	H	C	063914	063914		
SCB	FF6	3W	6	H	C	063919	063919		
SCB	GF2	3W	3	H	C	063924	063924		
SCB	FF6	3W	9	H	C	063929	063929		
SCB	FF6	3W	X	H	C	063938	063938		
SCB	FF6	3W	3	H	C	063943	063943		
SCB	FF6	3W	2	H	C	063948	063948		
SCB	FF6	3W	8	H	C	063954	063954		
SCB	FF6	3W	8	H	C	063968	063968		
SCB	FF6	3W	1	H	C	063973	063973		
SCB	FB7	ZA	4	H	C	063978	063978		
SCB	FB7	ZA	1	H	C	063985	063985		

SCB	FB7	ZA	0	H	C	063993	063993		
SCB	FF6	3W	8	H	C	063999	063999		
SCB	FF6	3W	6	H	C	064004	064004		
SCB	FF6	3W	1	H	C	064010	064010		
SCB	FB7	ZA	1	H	C	064019	064019		
SCB	GF2	3W	3	H	C	064023	064023		
SCB	FC6	3W	X	H	C	064029	064029		
SCB	FF6	3W	4	H	C	064034	064034		
SCB	FF6	3W	3	H	C	064039	064039		
SCB	FB7	ZA	1	H	C	064053	064053		
SCB	FB7	ZA	0	H	C	064058	064058		
SCB	FB7	ZA	6	H	C	064064	064064		
SCB	FF6	3W	1	H	C	064069	064069		
SCB	FF6	3W	4	H	C	064079	064079		
SCB	FF6	3W	1	H	C	064086	064086		
SCB	FF6	3W	2	H	C	064114	064114		
SCB	FB7	ZA	3	H	C	064118	064118		
SCB	FF6	3W	1	H	C	064122	064122		
SCB	GF2	3W	4	H	C	064127	064127		
SCB	FB7	ZA	1	H	C	064134	064134		
SCB	FF6	3W	5	H	C	064138	064138		
SCB	GF2	3W	4	H	C	064144	064144		
SCB	FC6	3W	9	H	C	064149	064149		
SCB	FF6	3W	3	H	C	064154	064154		
SCB	FB7	ZA	9	H	C	064169	064169		
SCB	FB7	ZA	6	H	C	064176	064176		
SCB	FF6	3W	6	H	C	064181	064181		
SCB	FB7	ZA	1	H	C	064232	064232		
SCB	FF6	3W	4	H	C	064244	064244		
SCB	FB7	ZA	5	H	C	064251	064251		
SCB	FB7	ZA	5	H	C	064296	064296		
SCB	FF6	ZA	1	H	C	064312	064312		
SCB	FB7	ZA	9	H	C	064320	064320		
SCB	FB7	ZA	6	H	C	064324	064324		
SCB	GF2	3W	3	H	C	064328	064328		
SCB	FF6	3W	1	H	C	064332	064332		
SCB	FF6	3W	9	H	C	064336	064336		
SCB	FF6	3W	0	H	C	064340	064340		
SCB	FF6	3W	X	H	C	064345	064345		
SCB	FF6	3W	0	H	C	064371	064371		
SCB	FF6	3W	8	H	C	064375	064375		
SCB	FC6	3W	4	H	C	064379	064379		
SCB	FF6	3W	0	H	C	064385	064385		
SCB	FF6	3W	8	H	C	064392	064392		
SCB	FF6	3W	3	H	C	064400	064400		
SCB	FF6	3W	X	H	C	064409	064409		
SCB	FF6	3W	1	H	C	064413	064413		
SCB	FF6	ZA	8	H	C	064422	064422		
SCB	FF6	3W	X	H	C	064426	064426		
SCB	FF6	3W	9	H	C	064434	064434		
SCB	FF6	3W	X	H	C	064443	064443		
SCB	FF6	3W	7	H	C	064447	064447		
SCB	FF6	3W	9	H	C	064451	064451		
SCB	FF6	3W	6	H	C	064455	064455		
SCB	FF6	3W	1	H	C	064458	064458		
SCB	FF6	3W	3	H	C	064462	064462		
SCB	FF6	3W	0	H	C	064466	064466		
SCB	FF6	3W	2	H	C	064470	064470		
SCB	FF6	3W	X	H	C	064474	064474		

SCB	FB7	ZA	0	H	C	064478	064478		
SCB	FB7	ZA	4	H	C	064483	064483		
SCB	FB7	ZA	1	H	C	064487	064487		
SCB	FB7	ZA	3	H	C	064491	064491		
SCB	FB7	ZA	8	H	C	064504	064504		
SCB	FB7	ZA	8	H	C	064518	064518		
SCB	FB7	ZA	3	H	C	064524	064524		
SCB	FB7	ZA	5	H	C	064556	064556		
SCB	FB7	ZA	0	H	C	064559	064559		
SCB	FB7	ZA	0	H	C	064562	064562		
SCB	FB7	ZA	6	H	C	064565	064565		
SCB	FB7	ZA	1	H	C	064568	064568		
SCB	FB7	ZA	7	H	C	064574	064574		
SCB	FB7	ZA	2	H	C	064577	064577		
SCB	FB7	ZA	2	H	C	064580	064580		
SCB	FB7	ZA	X	H	C	064584	064584		
SCB	FB7	ZA	5	H	C	064590	064590		
SCB	FB7	ZA	2	H	C	064594	064594		
SCB	FF6	3W	8	H	C	064599	064599		
SCB	FB7	ZA	9	H	C	064608	064608		
SCB	FB7	ZA	X	H	C	064617	064617		
SCB	FB7	ZA	9	H	C	064625	064625		
SCB	FB7	ZA	2	H	C	064630	064630		
SCB	FF6	3W	X	H	C	064636	064636		
SCB	FC6	3W	X	H	C	064645	064645		
SCB	FF6	3W	4	H	C	064650	064650		
SCB	FF6	3W	0	H	C	064659	064659		
SCB	FC6	3W	1	H	C	064663	064663		
SCB	GF2	3W	3	H	C	064667	064667		
SCB	FB7	ZA	7	H	C	064686	064686		
SCB	FF6	3W	0	H	C	064726	064726		

Documents

Document name

master.xml

Notes

▪ Repair instructions

Technical background

Folding door mirror feature does not function when using remote control key to lock vehicle.

"MirrorFold" feature not available in convenience settings on Driver Instrument Panel.

A limited number of 17 Model Year Supersports vehicles may not have correct data files within the Rear Body Controller, the "MirrorFold" function will not be displayed and therefore cannot be selected on the Driver Instrument Panel

Remedy

Check for presence of feature. If not present perform campaign procedure to parameterise and code feature in rear body controller

Customer notification

Customers do not need to be informed directly of this campaign. Please ensure that all affected vehicles are checked and repaired during the next service visit. You should also inform your new and used car sales departments so that the vehicles affected can be checked and, if necessary, repaired immediately (and not just before sale)

Warranty accounting instructions

Warranty Type	710 or 910
Labour Operation Code	01 29 00 05
Damage Service Number	EA93
Damage Code	00 66
Time	50 TU
Criteria ID	01

Genuine parts

N/A

Parts supply

N/A

Parts despatch control

.

Repair instructions

▪ Notes

Technical background

Folding door mirror feature does not function when using remote control key to lock vehicle.

"MirrorFold" feature not available in convenience settings on Driver Instrument Panel.

A limited number of 17 Model Year Supersports vehicles may not have correct data files within the Rear Body Controller, the "MirrorFold" function will not be displayed and therefore cannot be selected on the Driver Instrument Panel

Check

If the vehicle is not already listed as repaired in the "Repair history" (in Elsa pro), check for the presence of the "MirrorFold" function in the Drivers Instrument Panel (DIP), should neither be evident carry out the required work in accordance with these instructions

Genuine parts

N/A

Work

First check the DIP to confirm the feature is not present

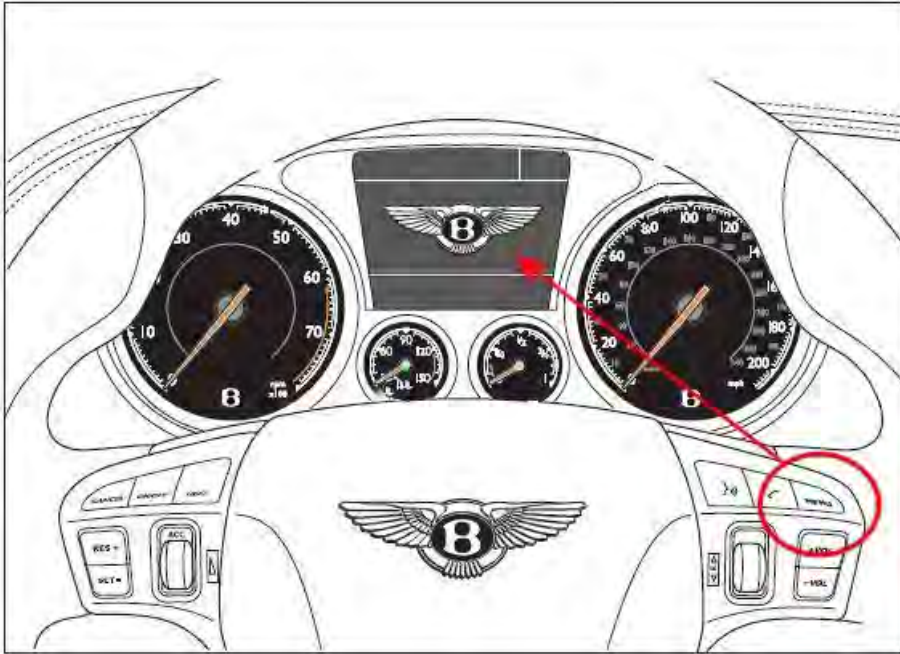


Figure 1

Depress the steering wheel "Menu" button until the "Convenience" screen is displayed on the DIP – figure 1



Figure 2

If "Mirror Fold" selection is not present continue with this Technical Product Information document – figure 2



Figure 3

If "Mirror Fold" is present but not selected, use the right hand knurled "Thumbwheel" to enable the "Mirror Fold" feature (check customer preference) – figure 3

To parameterize and code if "Mirror Fold" selection is not present

1. Ensure a suitable battery charger is correctly connected to the vehicle electrical system for the duration of this procedure

2. Connect the Bentley approved diagnostic tool to the vehicle On Board Diagnostic (OBD) socket. Note: Hardwire connections should be used between the diagnostic tool and the OBD socket and when connecting broadband to the diagnostic tool
3. Use the ignition key switch on the ignition
4. From the diagnostic tool main desktop select Off board Diagnostic Information System
5. Select–Start diagnosis
6. Adopt correct vehicle identification
7. Select **guided fault finding** to check and clear the vehicle of any fault codes. NOTE: At this time if requested to **Make a Target/Actual** comparison do not perform this action select NO

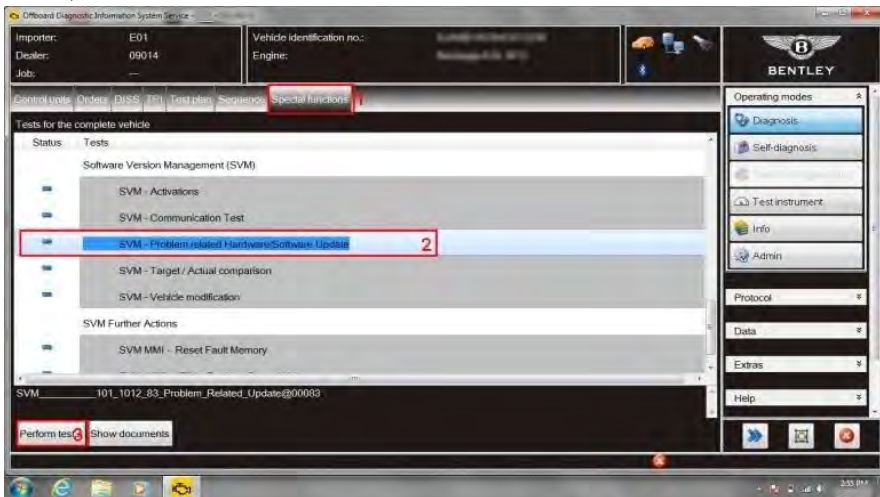


Figure 4

8. Select **Special functions** (1), Select **SVM – Problem related Hardware/Software Update** (2), Select **Perform test** (3) (see Figure 4)

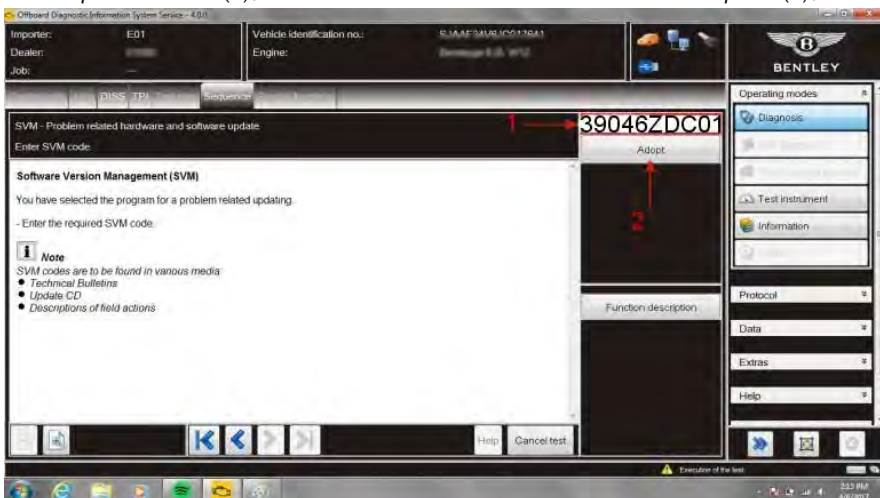


Figure 5

9. At SVM process screen enter (1) the specific SVM code **39046ZDC01** and then **Adopt** (2) (see Figure 5)
10. If prompted enter your global user ID and password – follow screen prompts

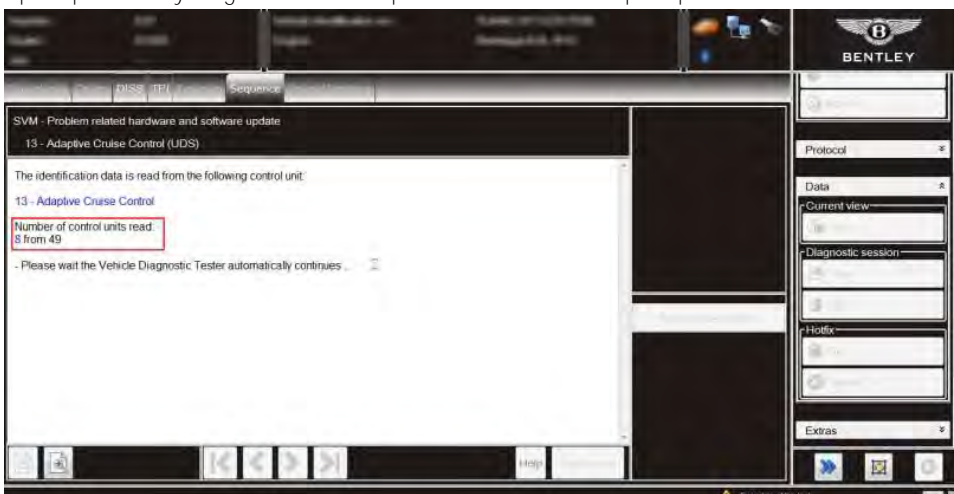


Figure 6

11. All control modules will be read

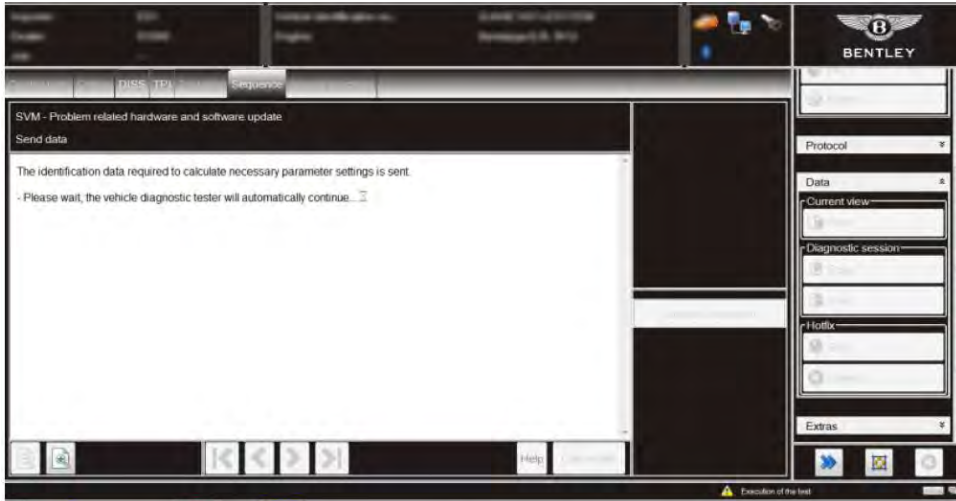


Figure 7

12. Identification data will be sent via online connection

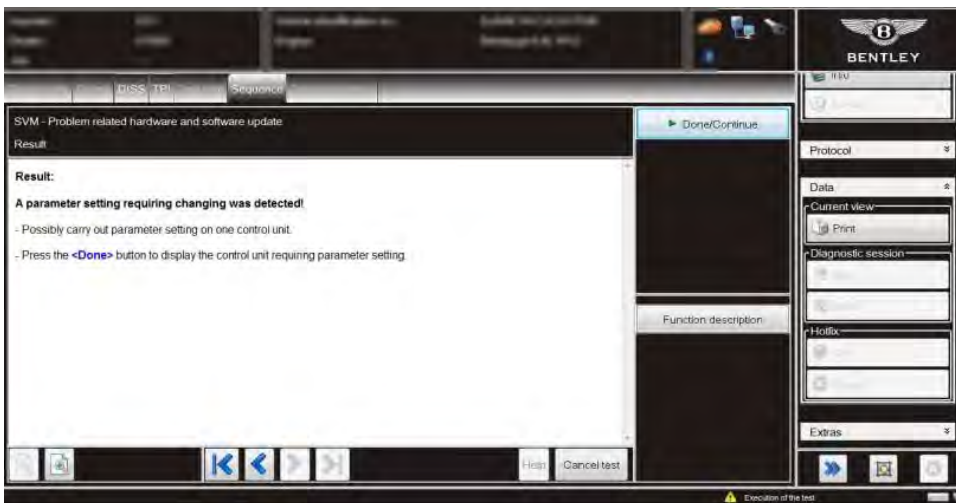


Figure 8

13. At Result screen select Done/Continue (see Figure 8) followscreen prompts to identify the modules and progress parameter settings

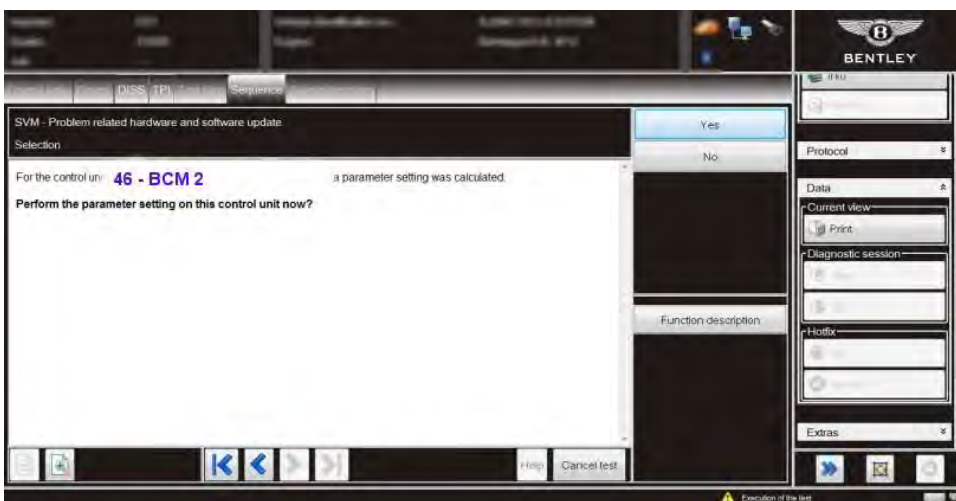


Figure 9

14. At Selection screen select Yes (see Figure 9) to perform parameter setting

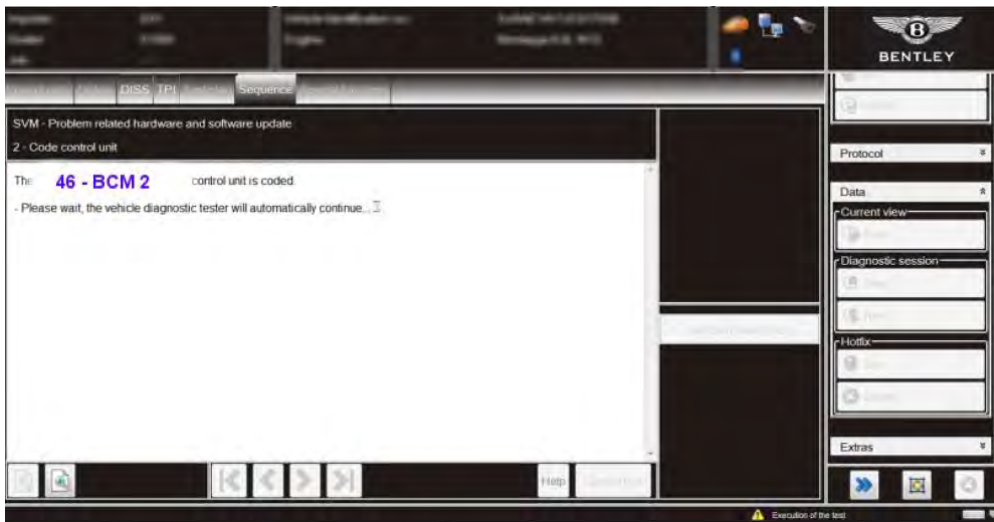


Figure 10

15. Coding will automatically be performed

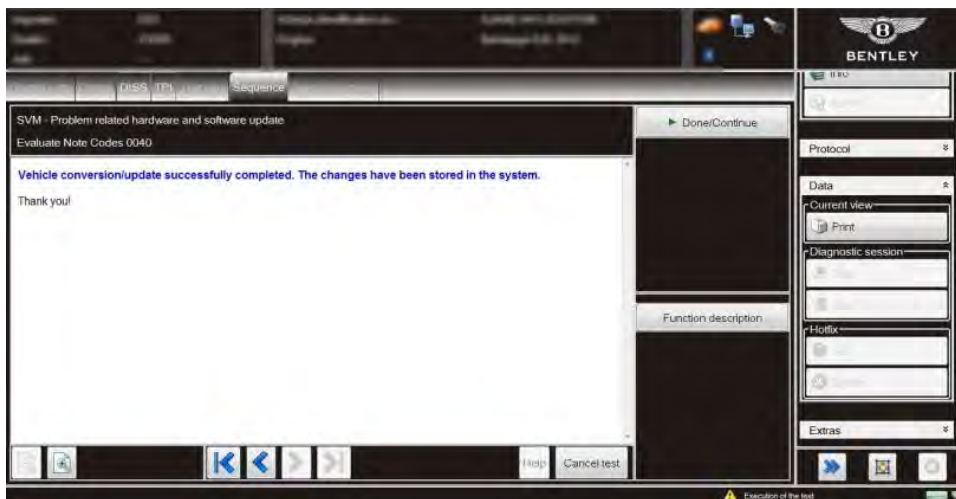


Figure 11

16. At completion screen select *Done/Continue* (see Figure 11)
17. Select exit Offboard Diagnostic Information System Service to check and clear the vehicle of any fault codes generated as a result of performing this campaign

Identification

The presence of the "MirrorFold" function in the Drivers Instrument Panel will serve to confirm the data files for this feature are loaded