

Bulletin #: HTB2017-09.14

RE: All Horton Models with aluminum attendant seat base with flip-up lid and A/C system underneath

Horton works to continually improve our processes and quality based on feedback from dealers, the warranty team, service, assembly and suppliers. During an inspection of an A/C unit, we discovered that a shorter bolt was used to secure the attendant seat base to the flip-up plate.



Figure 1

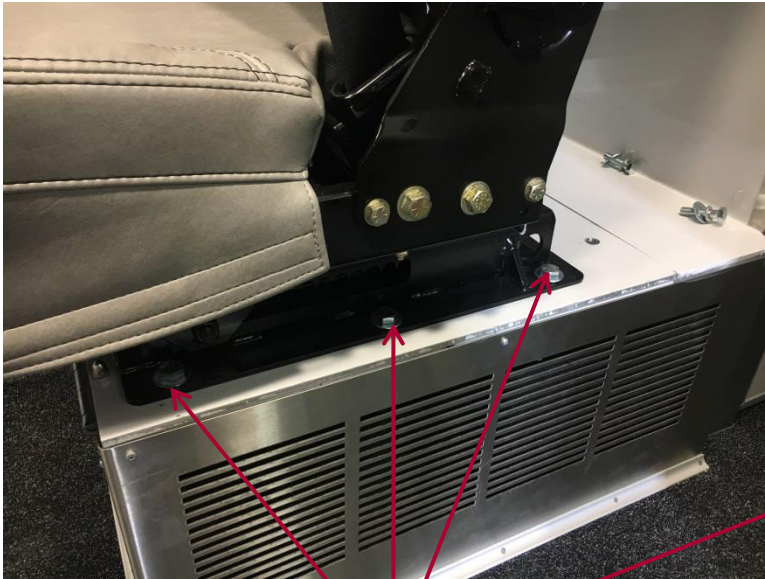
After an internal investigation, it was determined that this non-conformity could be present on units built between June 26th through August 30th 2017.

Required action in the field:

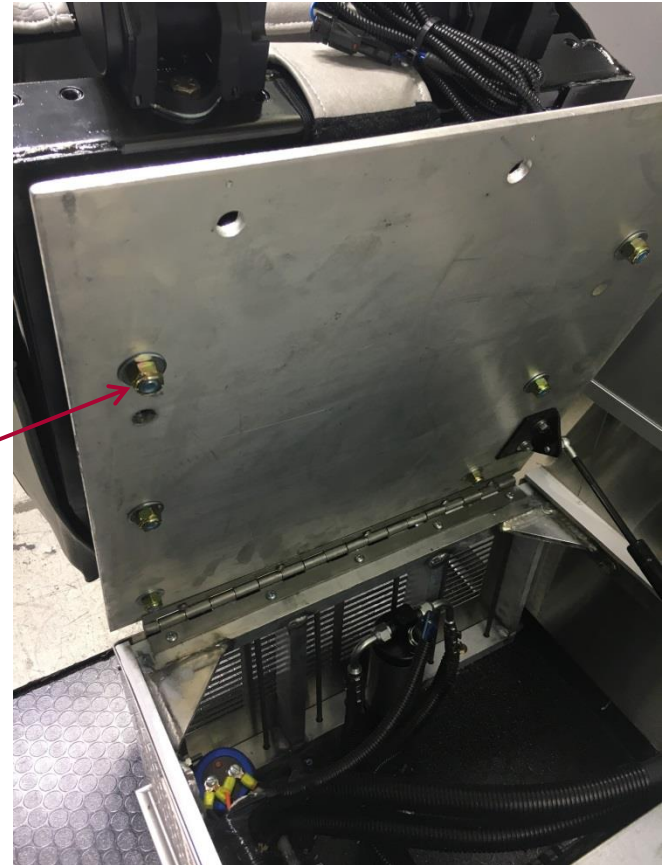
- Action on delivered units, perform a visual inspection of the hardware used to secure the attendant seat. If you can see the nylon of the locking nut, the bolt needs to be replaced. The replacement bolt needs to be a **7/16" – 20 GR5 1 ½" long** and needs to be torqued down to 44 lbf-ft.

For additional information please contact Jorge Jorge or Bruce Temple.

HEV Seat Base Mounting Hardware



To secure the seat we use six (6) 7/16"-20 GR5 bolts torqued down to 44 lbf·ft with a nylon lock nut.



HEV Seat Base Mounting Hardware



During a period of approximately 2 month (a possibility of 75-80 units affected) the installer used a shorter bolt. The smaller bolt was properly torqued, unfortunately did not engage the locking portion of the nylon nut.

A campaign lead by QC and production identified affected units in our line and a plan is in place to switch bolts. Any unit deliver after today, September 7, 2017 will have the proper hardware.