

October 6, 2017

07453 Version 3

Product Update: MDX 9-Speed Transmission Warmer

Supersedes 17-009, dated September 22, 2017 to revise the information highlighted in **yellow**

AFFECTED VEHICLES

Year	Model	Trim	VIN Range
2016	MDX	All	Check the iN VIN status for eligibility

REVISION SUMMARY

Under PARTS INFORMATION, several parts were added or removed. Additionally, some part numbers were changed.

BACKGROUND

Some 9-speed transmission warmers were improperly manufactured and allow the engine coolant and ATF to mix. If the fluids mix, the engine and transmission may be permanently damaged and require replacement.

CLIENT NOTIFICATION

Owners of affected vehicles will be sent a notification of this campaign.

Do an iN VIN status inquiry to make sure the vehicle is shown as eligible.

Some vehicles affected by this campaign may be in your new or used vehicle inventory. Repair these vehicles before they are sold.

SERVICE ADVISOR

Ask the client if the vehicle overheated, for example, if the MID showed a message **Stop Driving Engine Temperature Too Hot** or there was steam from under the hood. Other signs include coolant leaking from the radiator cap or the coolant reserve tank.



OR



Write down the client responses on the RO.

NOTE: Any engine replaced without this documentation on the signed RO will be subject to debit.

CLIENT INFORMATION: The information in this bulletin is intended for use only by skilled technicians who have the proper tools, equipment, and training to correctly and safely maintain your vehicle. These procedures should not be attempted by "do-it-yourselfers," and you should not assume this bulletin applies to your vehicle, or that your vehicle has the condition described. To determine whether this information applies, contact an authorized Acura automobile dealer.

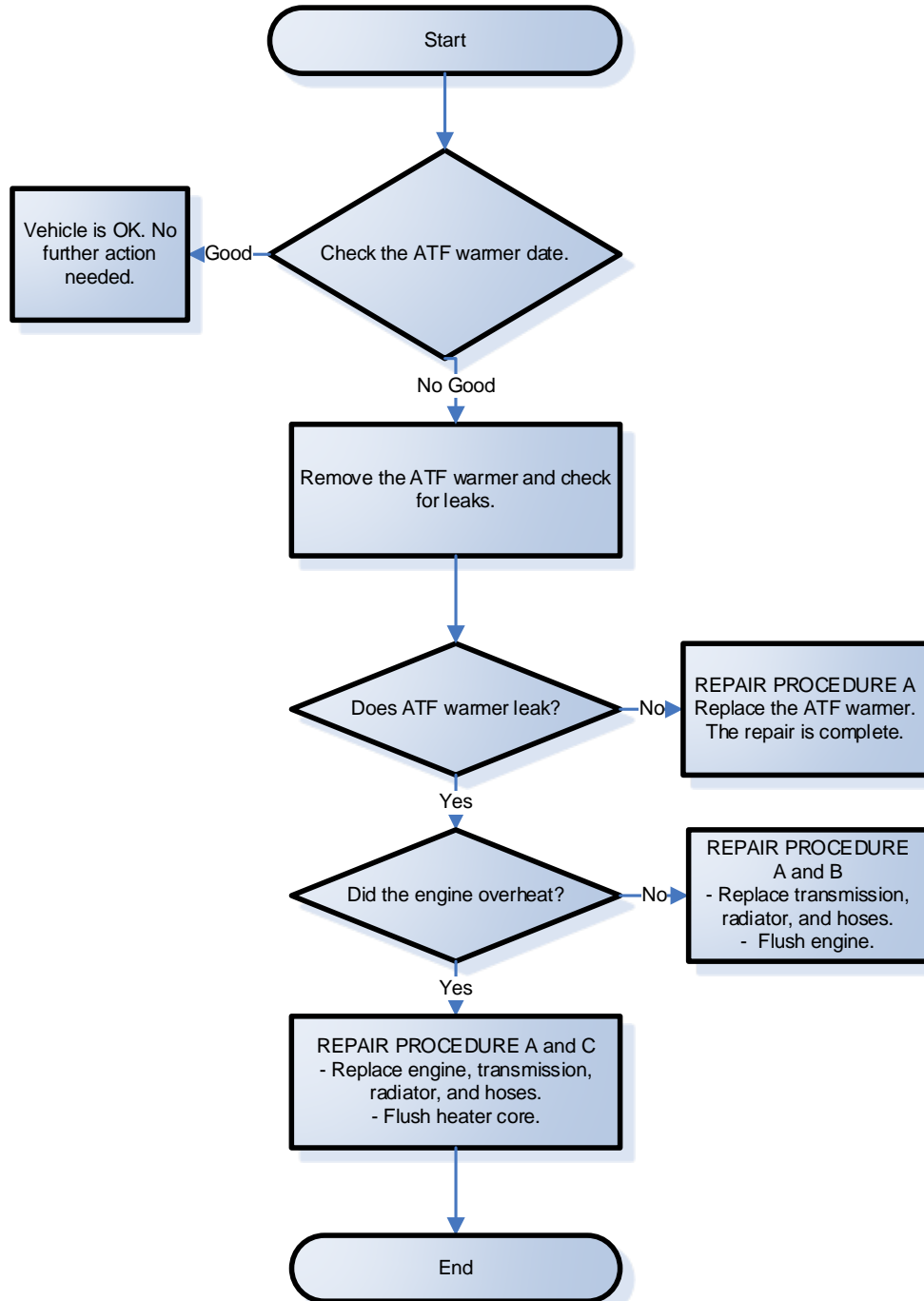
CORRECTIVE ACTION

Inspect the vehicle and based on your inspection, do one of the following:

- The transmission warmer is outside the affected date. No further action is needed.
- Replace the transmission warmer.
- Replace the transmission, radiator, thermostat, coolant reserve tank, all of the coolant hoses, ECT sensor (1 and 2) O-rings (engine coolant temperature sensor), and flush the cooling system.
- Replace the short block, cylinder heads, transmission, radiator, thermostat, coolant reserve tank, all of the coolant hoses, ECT sensor (1 and 2) O-rings (engine coolant temperature sensor), water passage, water connecting pipe, and flush the heater core.

NOTE: Photos are required every time a transmission is replaced – see page 17. Any transmission replacement claims that do not include the required photos may be subject to debit.

The flowchart below provides a summary to help navigate the inspection and repair procedure. Make sure you read the service bulletin steps thoroughly for the detailed repair information.



WARRANTY CLAIM INFORMATION

Inspection Only

Operation Number	Description	Flat Rate Time	Defect Code	Symptom Code	Template ID	Failed Part Number
2185A8	Inspect the transmission warmer manufacturing date.	0.2 hr	6ZF00	KG300	17-009A	06200-5NB-A58

Inspection and do REPAIR PROCEDURE A Only

Operation Number	Description	Flat Rate Time	Defect Code	Symptom Code	Template ID	Failed Part Number
2180A7	Inspect the vehicle and do REPAIR PROCEDURE A only. Replace: ATF Warmer	2.1 hrs	6ZF00	KG300	17-009B	06200-5NB-A58

Inspection and do REPAIR PROCEDURE A and REPAIR PROCEDURE B

2WD

Operation Number	Description	Transmission Replacement Number	Flat Rate Time	Defect Code	Symptom Code	Template ID	Failed Part Number
2180A8	<p>2WD - Inspect the vehicle, then start at REPAIR PROCEDURE A, and finish with REPAIR PROCEDURE B.</p> <ul style="list-style-type: none"> - Replace: transmission, radiator, and hoses - Flush engine - Includes updating PCM/TCM, idle learn and alignment 	06200-5NB-A58RM	10.5 hrs	6ZF00	KG300	17-009C	06200-5NB-A58
2180A8	<p>2WD with ACC - Inspect the vehicle, then start at REPAIR PROCEDURE A, and finish with REPAIR PROCEDURE B.</p> <ul style="list-style-type: none"> - Replace: transmission, radiator, and hoses - Flush engine - Includes updating PCM/TCM, idle learn and alignment 	06200-5NB-A58RM	10.5 hrs	6ZF00	KG300	17-009G	06200-5NB-A58
A	Add if the vehicle has an accessory external transmission cooler.		0.9 hr				
2180A8	<p>2WD with ACC and Idle-stop - Inspect the vehicle, then start at REPAIR PROCEDURE A, and finish with REPAIR PROCEDURE B.</p> <ul style="list-style-type: none"> - Replace: transmission, radiator, and hoses - Flush engine - Includes updating PCM/TCM, idle learn and alignment 	06200-5NB-A78RM	10.5 hrs	6ZF00	KG300	17-009H	06200-5NB-A58
A	Add if the vehicle has an accessory external transmission cooler		0.9 hr				

Inspection and do REPAIR PROCEDURE A and REPAIR PROCEDURE B - AWD

2180A9	<p>AWD - Inspect the vehicle, then start at REPAIR PROCEDURE A, and finish with REPAIR PROCEDURE B.</p> <ul style="list-style-type: none"> - Replace: transmission, radiator, and hoses - Flush engine - Includes updating PCM/TCM, idle learn, and alignment 	06200-5NC-A59RM	10.9 hrs	6ZF00	KG300	17-009I	06200-5NB-A58
2180A9	<p>AWD with ACC - Inspect the vehicle, then start at REPAIR PROCEDURE A, and finish with REPAIR PROCEDURE B.</p> <ul style="list-style-type: none"> - Replace: transmission, radiator, and hoses - Flush engine - Includes updating PCM/TCM, idle learn, and alignment 	06200-5NC-A69RM	10.9 hrs	6ZF00	KG300	17-009M	06200-5NB-A58
A	Add if the vehicle has an accessory external transmission cooler.		0.9 hr				
2180A9	<p>AWD with ACC and Idle-stop - Inspect the vehicle, then start at REPAIR PROCEDURE A, and finish with REPAIR PROCEDURE B.</p> <ul style="list-style-type: none"> - Replace: transmission, radiator, and hoses - Flush engine - Includes updating PCM/TCM, idle learn, and alignment 	06200-5NC-A79RM	10.9 hrs	6ZF00	KG300	17-009N	06200-5NB-A58
A	Add if the vehicle has an accessory external transmission cooler.		0.9 hr				

Inspection and do REPAIR PROCEDURE A and REPAIR PROCEDURE C

Operation Number	Description	Transmission Replacement Number	Flat Rate Time	Defect Code	Symptom Code	Template ID	Failed Part Number
2180B0	<p>2WD - Inspect the vehicle, then start at REPAIR PROCEDURE A, and finish with REPAIR PROCEDURE C.</p> <ul style="list-style-type: none"> - Replace: engine, transmission, radiator, and hoses - Flush heater core - Includes flush, updating PCM/TCM, idle learn and alignment 	06200-5NB-A58RM	13.1 hrs	6ZF00	KG300	17-009R	06200-5NB-A58
2180B0	<p>2WD with ACC - Inspect the vehicle, then start at REPAIR PROCEDURE A, and finish with REPAIR PROCEDURE C.</p> <ul style="list-style-type: none"> - Replace: engine, transmission, radiator, and hoses - Flush heater core - Includes flush, updating PCM/TCM, idle learn and alignment 	06200-5NB-A68RM	13.1 hrs	6ZF00	KG300	17-009S	06200-5NB-A58
A	Add if the vehicle has an accessory external transmission cooler.		0.9 hr				
2180B0	<p>2WD with ACC and Idle-stop - Inspect the vehicle, then start at REPAIR PROCEDURE A, and finish with REPAIR PROCEDURE C.</p> <ul style="list-style-type: none"> - Replace: engine, transmission, radiator, and hoses - Flush heater core - Includes flush, updating PCM/TCM, idle learn and alignment 	06200-5NB-A78RM	13.1 hrs	6ZF00	KG300	17-009T	06200-5NB-A58
A	Add if the vehicle has an accessory external transmission cooler.		0.9 hr				

Inspection and do REPAIR PROCEDURE A and REPAIR PROCEDURE C

2180B1	<p>AWD - Inspect the vehicle, then start at REPAIR PROCEDURE A, and finish with REPAIR PROCEDURE C.</p> <ul style="list-style-type: none"> - Replace: engine, transmission, radiator, and hoses - Flush heater core - Includes flush, updating PCM/TCM, idle learn and alignment 	06200-5NC-A59RM	13.5 hrs	6ZF00	KG300	17-009X	06200-5NB-A58
2180B1	<p>AWD with ACC - Inspect the vehicle, then start at REPAIR PROCEDURE A, and finish with REPAIR PROCEDURE C.</p> <ul style="list-style-type: none"> - Replace: engine, transmission, radiator, and hoses - Flush heater core - Includes flush, updating PCM/TCM, idle learn and alignment 	06200-5NC-A69RM	13.5 hrs	6ZF00	KG300	17-009Y	06200-5NB-A58
A	Add if the vehicle has an accessory external transmission cooler.		0.9 hr				
2180B1	<p>AWD with ACC and Idle-stop - Inspect the vehicle, then start at REPAIR PROCEDURE A, and finish with REPAIR PROCEDURE C.</p> <ul style="list-style-type: none"> - Replace: engine, transmission, radiator, and hoses - Flush heater core - Includes flush, updating PCM/TCM, idle learn and alignment 	06200-5NC-A79RM	13.5 hrs	6ZF00	KG300	17-009Z	06200-5NB-A58
A	Add if the vehicle has an accessory external transmission cooler.		0.9 hr				

PARTS INFORMATION - REPAIR PROCEDURE A

Part Name	Part Number	Quantity
ATF Warmer Kit (Includes O-Rings)	06224-5J4-305	1
Fitting (used only with accessory cooler)	25910-5NC-003	2

REQUIRED MATERIALS – REPAIR PROCEDURE A

Part Name	Part Number	Quantity
ATF Type 3.1 NOTE: 1 quart will fill 5 vehicles unless the vehicle has an accessory ATF cooler.	08200-9017A	1
Antifreeze/Coolant Type 2 NOTE: 1 gallon will fill 10 vehicles.	OL999-9011A	1

PARTS INFORMATION – REPAIR PROCEDURE B

Part Name	Part Number	Quantity
Transmission		1
2WD	06200-5NB-A58RM	
2WD with ACC	06200-5NB-A68RM	
2WD with ACC and auto idle stop	06200-5NB-A78RM	
AWD	06200-5NC-A59RM	
AWD with ACC	06200-5NC-A69RM	
AWD with ACC and auto idle stop	06200-5NC-A79RM	
Flange Bolt (12 x 70 mm)	90051-R97-000	1
Flange Bolt (12 x 120 mm)	90051-5J4-000	1
Flange Bolt (10 x 60 mm)	90168-TA1-A00	2
Flange Nut (12 mm)	90371-SAA-010	4
Flange Bolt (10 x 35 mm)	90163-SDA-A01	2
Pre-Chamber Gasket	18393-SDB-A00	1
Exhaust Pipe Gasket (NOK)	18212-SA7-003	2
Self-Lock Nut (10 mm)	90212-SA5-003	9
Bolt (12 point 8 x 21 mm)	90113-S10-000	8
Flange Bolt (12 x 29 mm)	90382-SH9-003	2
Shaft Ring Seal Kit (AWD)	06235-5L9-000	1
Flange Nut (12 mm)	90362-SZA-A00	4
Split Pin (3.0 x 22 mm)	94201-30220	2
Castle Nut (14 mm)	90365-STX-A00	2
Flange Bolt (12 x 30 mm)	90161-SHJ-A00	4
Flange Bolt (14 x 140 mm)	90165-TZ5-A10	2
Flange Bolt (10 x 125 mm)	90165-TK8-A00	2
Snap Ring (32 x 2.2 mm)	44319-STX-A01	1
Set Ring (32 x 2.2 mm)	44319-STX-A60	1
Flange Bolt (10 x 30 mm)	90163-SDB-A00	3
Radiator (DENSO)	19010-5J6-A01	1
Warmer Hose B (ATF)	19433-5J2-A00	1
Water Hose A	19521-5J6-A50	1
Water Hose C	19523-5J6-A10	1
Water Hose (Lower) (A)	19502-5J6-A50	1
Water Hose (Lower) (B)	19504-5J2-A50	1
Water Hose (Upper)	19501-5J6-A10	1
Reserve Tank Tube B	19104-5J6-A00	1
Reserve Tank Tube A	19103-5J6-A00	1
Water Inlet Hose	79721-TZ5-A10	1

Water Outlet Hose	79725-TZ5-A11	1
Warmer Hose A (ATF)	19432-5J2-A50	1
Thermostat Cover Assembly	19315-5J2-A01	1
O-Ring (DENSO)	91307-RTA-005	2
Reserve Tank Joint	19106-RSA-G00	1
Accessory Cooler Kit (ATF) (If equipped)	06255-5NC-326	1
Water Hose B	19522-5J6-A00	1
Reserve Tank	19101-5J6-A00	1
Reserve Tank Cap	19102-5J6-A00	1

REQUIRED MATERIALS – REPAIR PROCEDURE B

Part Name	Part Number	Quantity
ATF Type 3.1 NOTE: 1 quart will fill 5 vehicles unless the vehicle has an accessory ATF cooler.	08200-9017A	1
Coolant Type 2	OL999-9011A	12

PARTS INFORMATION – REPAIR PROCEDURE C

Part Name	Part Number	Quantity
Transmission 2WD 2WD with ACC 2WD with ACC and auto idle stop AWD AWD with ACC AWD with ACC and auto idle stop	06200-5NB-A58RM 06200-5NB-A68RM 06200-5NB-A78RM 06200-5NC-A59RM 06200-5NC-A69RM 06200-5NC-A79RM	1
Cylinder Block Assembly	10002-5J6-A10	1
Cylinder Head Assembly (Front)	10004-5J6-A11	1
Cylinder Head Assembly (Rear)	10005-5J6-A11	1
Flange Bolt (12 x 70 mm)	90051-R97-000	1
Flange Bolt (12 x 120 mm)	90051-5J4-000	1
Flange Bolt (10 x 60 mm)	90168-TA1-A00	2
Flange Nut (12 mm)	90371-SAA-010	4
Flange Bolt (10 x 35 mm)	90163-SDA-A01	2
Pre-Chamber Gasket	18393-SDB-A00	1
Exhaust Pipe Gasket (NOK)	18212-SA7-003	2
Self-Lock Nut (10 mm)	90212-SA5-003	9
Bolt (12 point 8 x 21 mm) (AWD Only)	90113-S10-000	8
Flange Bolt (10 x 29 mm)	90382-SH9-003	2
Shaft Ring Seal Kit (AWD)	06235-5L9-000	1
Flange Nut (12 mm)	90362-SZA-A00	4
Split Pin (3.0 x 22 mm)	94201-30220	2
Castle Nut (14 mm)	90365-STX-A00	2
Flange Bolt (12 x 30 mm)	90161-SHJ-A00	4
Flange Bolt (14 x 140 mm)	90165-TZ5-A10	2
Flange Bolt (14 x 125 mm)	90165-TK8-A00	2
Snap Ring (32 x 2.2 mm)	44319-STX-A01	1
Set Ring (32 x 2.2 mm)	44319-STX-A60	1
Flange Bolt (10 x 30 mm)	90163-SDB-A00	3
Spindle Nut	90305-S3V-A11	2
EGR Pipe Gasket A	18716-R70-A01	1
EGR Pipe Gasket B	18719-R70-A01	1

Exhaust Chamber Gasket (Nippon Leakless)	18115-5G0-A01	2
Self-Lock Nut (8 mm)	90212-RCA-A01	8
Intake Manifold Cover Gasket (Upper)	17112-5G0-A01	1
Intake Manifold Gasket (Nippon Leakless)	17105-R9P-A01	1
Front Intake Manifold Base Gasket	17055-R9P-A01	1
Rear Intake Manifold Base Gasket	17065-R9P-A01	1
Throttle Body Gasket	16176-RYE-A10	1
Timing Belt Idler Bolt	14551-RCA-A01	1
Flange Bolt (12 x 45 mm)	90165-SDA-A00	1
Flange Bolt (10 x 30 mm)	90103-SV4-013	3
EGR Valve Gasket (ISHINO)	18715-PB2-000	1
O-Ring (31.2 x 4.1 mm) (NOK)	91314-PH7-003	2
Fuel Joint Pipe Set	16012-R9P-315	1
O-Ring	91311-5A2-A01	1
Sealing Washer (12 mm)	16705-5A2-A01	2
Injector Clip	16451-5A2-A01	6
Injector Seal Set	16453-R9P-A00	1
Rear Water Passage Gasket (NIPPON LEAKLESS)	19412-5G0-A01	1
Front Water Passage Gasket (NIPPON LEAKLESS)	19411-5G0-A02	1
Rear Cylinder Head Gasket (NIPPON LEAKLESS)	12261-R9P-A01	1
Front Cylinder Head Gasket (NIPPON LEAKLESS)	12251-R9P-A01	1
Radiator (DENSO)	19010-5J6-A01	1
Warmer Hose B (ATF)	19433-5J2-A00	1
Water Hose A	19521-5J6-A50	1
Water Hose C	19523-5J6-A10	1
Water Hose (Lower) (A)	19502-5J6-A50	1
Water Hose (Lower) (B)	19504-5J2-A50	1
Water Hose (Upper)	19501-5J6-A10	1
Reserve Tank Tube B	19104-5J6-A00	1
Reserve Tank Tube A	19103-5J6-A00	1
Water Inlet Hose	79721-TZ5-A10	1
Water Outlet Hose	79725-TZ5-A11	1
Thermostat Cover Assembly	19315-5J2-A01	1

Warmer Hose A (ATF)	19432-5J2-A50	1
Connecting Pipe	19505-5J2-A00	1
Water Passage	19410-5J2-A00	1
O-Ring (Denso)	91307-RTA-005	2
Reserve Tank Joint	19106-RSA-G00	1
Reserve Tank Cap	19102-5J6-A00	1
Oil Filter	15400-PLM-A02	1
Accessory Cooler Kit (If equipped)	06255-5NC-326	1
Flange Bolt (12 x 75 mm)	90163-TA0-A00	1
Water Hose B	19522-5J6-A00	1
Reserve Tank	19101-5J6-A00	1

REQUIRED MATERIALS – REPAIR PROCEDURE C

Part Name	Part Number	Quantity
ATF Type 3.1 (only if the vehicle is equipped with an accessory cooler)	08200-9017A	1
Coolant Type 2	OL999-9011A	3
Acura Engine Oil 0W-20	08798-9073	7