

Technical Service Bulletin

Mazda North American Operations
Irvine, CA 92618-2922



Subject: EXCESSIVE CONDENSATION OR WATER WITHIN THE HEADLAMP ASSEMBLY - CAUTION	Bulletin No.: 09-001/17
	Last Issued: 08/09/2017

BULLETIN NOTES

This bulletin supersedes the previously issued bulletin(s) listed below: The changes are noted in Red beside the change bars.

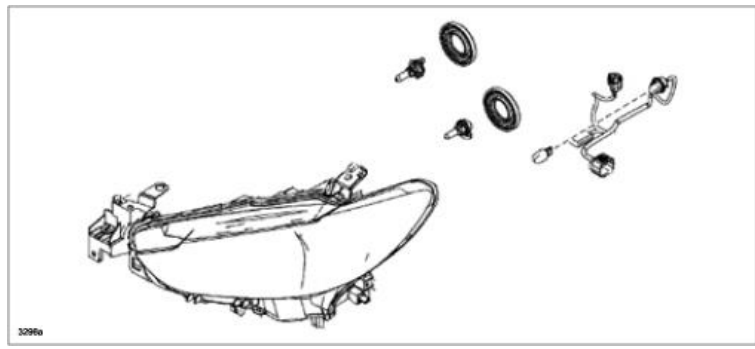
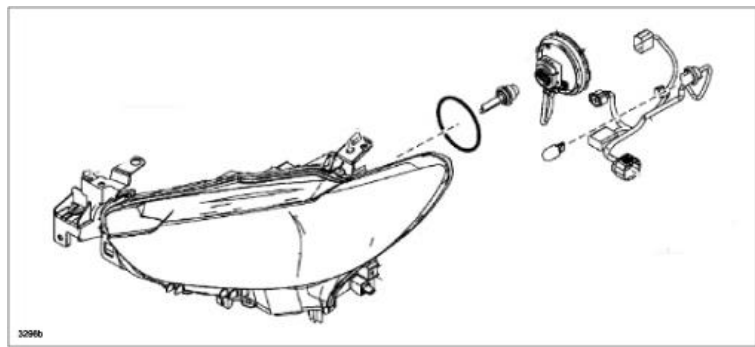
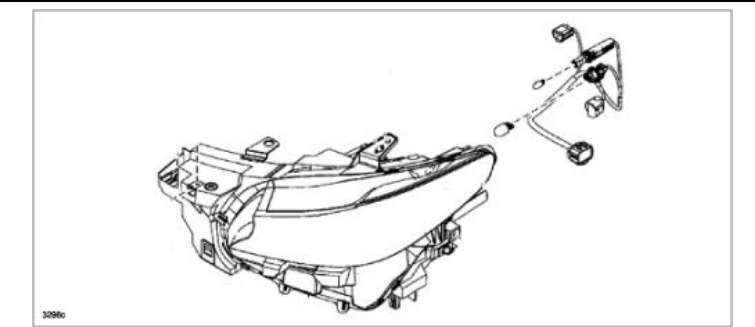
Previously issued TSBs:	Date issued:	Previously issued TSBs:	Date issued:
09-001/17	01/13/2017	09-003/13	03/04/2013
09-013/16	02/26/2016	09-005/11	02/07/2011
09-049/14	11/24/2014		

APPLICABLE MODEL(S)/VINS

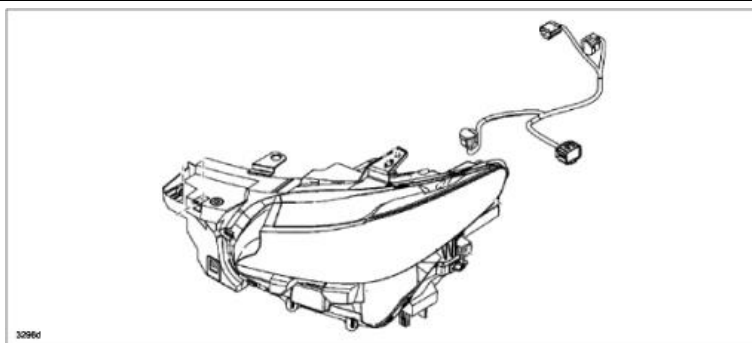
2011-2014 Mazda2	2007-2017 Mazda6	2013-2017CX-5	2007-2011 RX-8
2007-2018Mazda3	2008-2011 Tribute	2007-2012 CX-7	2006-2017 MX-5
2006-2015 Mazda5	2016-2018CX-3	2007-2017CX-9	

CONSUMER NOTICE: The information and instructions in this bulletin are intended for use by skilled technicians. Mazda technicians utilize the proper tools/equipment and take training to correctly and safely maintain Mazda vehicles. These instructions should not be performed by "do-it-yourselfers." Customers should not assume this bulletin applies to their vehicle or that their vehicle will develop the described concern. To determine if the information applies, customers should contact their nearest authorized Mazda dealership. Mazda North American Operations reserves the right to alter the specifications and contents of this bulletin without obligation or advance notice. All rights reserved. No part of this bulletin may be reproduced in any form or by any means, electronic or mechanical---including photocopying and recording and the use of any kind of information storage and retrieval system ---without permission in writing.

Replacement headlamp assembly applicable to this bulletin

<p>Halogen Headlamp + Bulb Type Turn Signal lamp</p>	
<p>Discharge Headlamp + Bulb Type Turn Signal lamp</p>	
<p>LED Headlamp + Bulb Type Turn Signal lamp</p>	

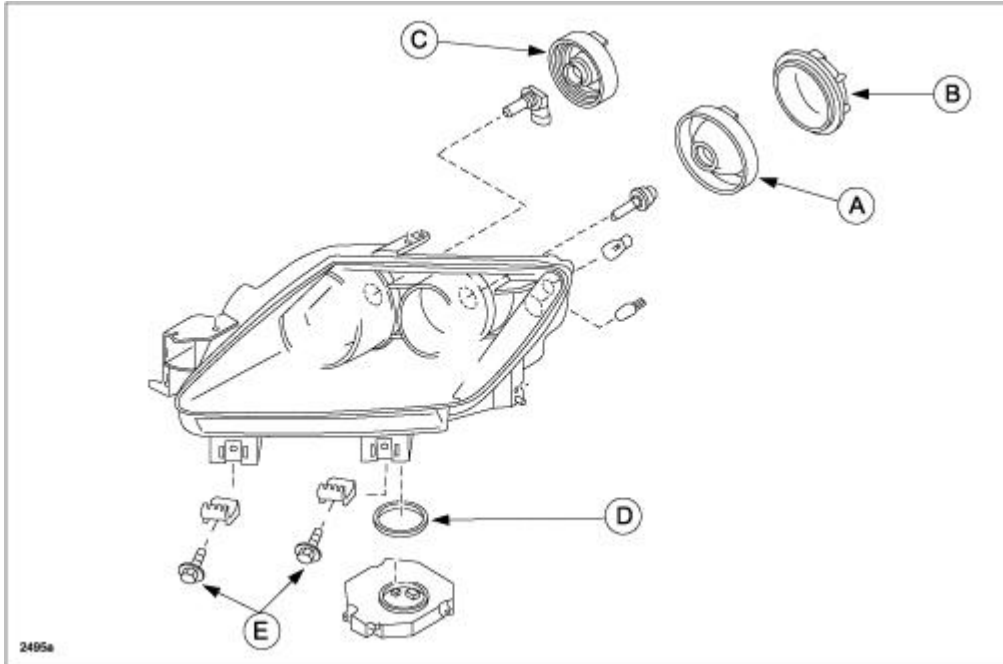
Replacement headlamp assembly not applicable to this bulletin

<p>LED Headlamp + LED Turn Signal lamp</p>	
----------------------------------------------------	--------------------------------------------------------------------------------------

CONSUMER NOTICE: The information and instructions in this bulletin are intended for use by skilled technicians. Mazda technicians utilize the proper tools/equipment and take training to correctly and safely maintain Mazda vehicles. These instructions should not be performed by "do-it-yourselfers." Customers should not assume this bulletin applies to their vehicle or that their vehicle will develop the described concern. To determine if the information applies, customers should contact their nearest authorized Mazda dealership. Mazda North American Operations reserves the right to alter the specifications and contents of this bulletin without obligation or advance notice. All rights reserved. No part of this bulletin may be reproduced in any form or by any means, electronic or mechanical---including photocopying and recording and the use of any kind of information storage and retrieval system ---without permission in writing.

DESCRIPTION

When dealing with customer complaints of excessive condensation and/or water within the headlamp unit, first determine if all the bulb sockets (including O-ring), seals and covers are present and correctly installed. In most cases you will find that the Bulb Seal No. 1 (A) or HID Bulb Seal No. 1 (B) and Bulb Seal No. 2 (C) socket covers have not been correctly installed or are missing due to improper prior repairs (i.e., customer replacing the headlamp bulbs or body shop not transferring them when replacing the headlamp unit(s) due to a collision). Any damage caused by missing socket covers, HID module seal (D), or missing bumper brackets (E) is not covered by warranty policy.



NOTE: LED headlamp assembly with LED turn signal lamp replacement part include seals. Seal transfer is not required.

CONSUMER NOTICE: The information and instructions in this bulletin are intended for use by skilled technicians. Mazda technicians utilize the proper tools/equipment and take training to correctly and safely maintain Mazda vehicles. These instructions should not be performed by "do-it-yourselfers." Customers should not assume this bulletin applies to their vehicle or that their vehicle will develop the described concern. To determine if the information applies, customers should contact their nearest authorized Mazda dealership. Mazda North American Operations reserves the right to alter the specifications and contents of this bulletin without obligation or advance notice. All rights reserved. No part of this bulletin may be reproduced in any form or by any means, electronic or mechanical---including photocopying and recording and the use of any kind of information storage and retrieval system ---without permission in writing.