

September 22, 2017

05873 Version 2

## Product Update: MDX 9-Speed Transmission Warmer

### AFFECTED VEHICLES

Year	Model	Trim	VIN Range
2016	MDX	All	Check the iN VIN status for eligibility

### BACKGROUND

Some 9-speed transmission warmers were improperly manufactured and allow the engine coolant and ATF to mix. If the fluids mix, the engine and transmission may be permanently damaged and require replacement.

### CLIENT NOTIFICATION

Owners of affected vehicles will be sent a notification of this campaign.

Do an iN VIN status inquiry to make sure the vehicle is shown as eligible.

Some vehicles affected by this campaign may be in your new or used vehicle inventory. Repair these vehicles before they are sold.

### SERVICE ADVISOR

Ask the client if the vehicle overheated, for example, if the MID showed a message **Stop Driving Engine Temperature Too Hot** or there was steam from under the hood. Other signs include coolant leaking from the radiator cap or the coolant reserve tank.



OR



Write down the client responses on the RO.

**NOTE: Any engine replaced without this documentation on the signed RO will be subject to debit.**

**CLIENT INFORMATION:** The information in this bulletin is intended for use only by skilled technicians who have the proper tools, equipment, and training to correctly and safely maintain your vehicle. These procedures should not be attempted by “do-it-yourselfers,” and you should not assume this bulletin applies to your vehicle, or that your vehicle has the condition described. To determine whether this information applies, contact an authorized Acura automobile dealer.

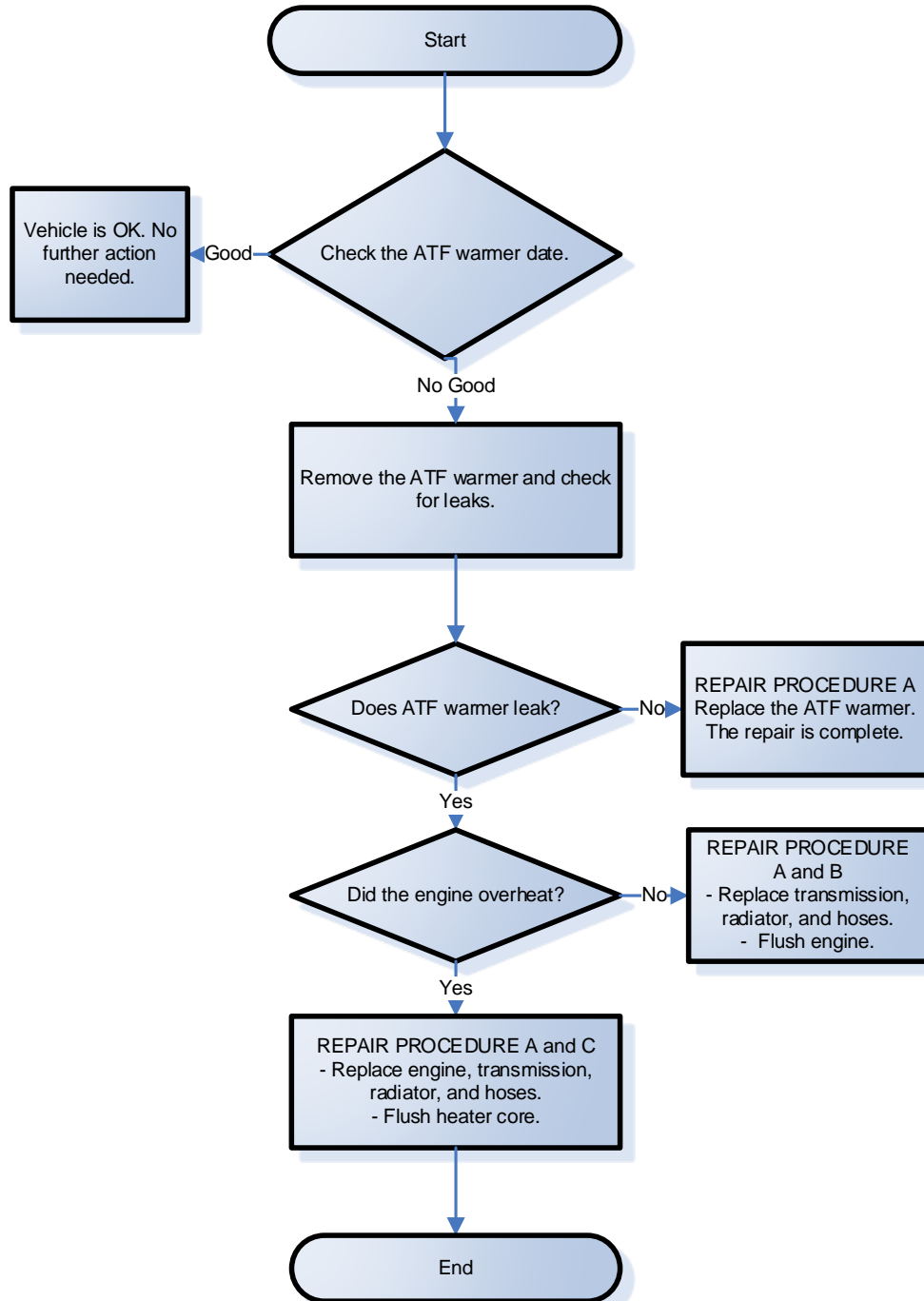
## CORRECTIVE ACTION

Inspect the vehicle and based on your inspection, do one of the following:

- The transmission warmer is outside the affected date. No further action is needed.
- Replace the transmission warmer.
- Replace the transmission, radiator, thermostat, coolant reserve tank, all of the coolant hoses, ECT sensor (1 and 2) O-rings (engine coolant temperature sensor), and flush the cooling system.
- Replace the short block, cylinder heads, transmission, radiator, thermostat, coolant reserve tank, all of the coolant hoses, ECT sensor (1 and 2) O-rings (engine coolant temperature sensor), water passage, water connecting pipe, and flush the heater core.

**NOTE: Photos are required every time a transmission is replaced** – see page 17. Any transmission replacement claims that do not include the required photos may be subject to debit.

The flowchart below provides a summary to help navigate the inspection and repair procedure. Make sure you read the service bulletin steps thoroughly for the detailed repair information.



## WARRANTY CLAIM INFORMATION

### Inspection Only

Operation Number	Description	Flat Rate Time	Defect Code	Symptom Code	Template ID	Failed Part Number
2185A8	Inspect the transmission warmer manufacturing date.	0.2 hr	6ZF00	KG300	17-009A	06200-5NB-A58

### Inspection and do REPAIR PROCEDURE A Only

Operation Number	Description	Flat Rate Time	Defect Code	Symptom Code	Template ID	Failed Part Number
2180A7	Inspect the vehicle and do REPAIR PROCEDURE A only. Replace: ATF Warmer	2.1 hrs	6ZF00	KG300	17-009B	06200-5NB-A58

Inspection and do REPAIR PROCEDURE A and REPAIR PROCEDURE B

2WD

Operation Number	Description	Transmission Replacement Number	Flat Rate Time	Defect Code	Symptom Code	Template ID	Failed Part Number
2180A8	<p><b>2WD</b> - Inspect the vehicle, then start at REPAIR PROCEDURE A, and finish with REPAIR PROCEDURE B.</p> <ul style="list-style-type: none"> <li>- Replace: transmission, radiator, and hoses</li> <li>- Flush engine</li> <li>- Includes updating PCM/TCM, idle learn and alignment</li> </ul>	06200-5NB-A58RM	10.5 hrs	6ZF00	KG300	17-009C	06200-5NB-A58
2180A8	<p><b>2WD with ACC</b> - Inspect the vehicle, then start at REPAIR PROCEDURE A, and finish with REPAIR PROCEDURE B.</p> <ul style="list-style-type: none"> <li>- Replace: transmission, radiator, and hoses</li> <li>- Flush engine</li> <li>- Includes updating PCM/TCM, idle learn and alignment</li> </ul>	06200-5NB-A58RM	10.5 hrs	6ZF00	KG300	17-009G	06200-5NB-A58
A	Add if the vehicle has an accessory external transmission cooler.		0.9 hr				
2180A8	<p><b>2WD with ACC and Idle-stop</b> - Inspect the vehicle, then start at REPAIR PROCEDURE A, and finish with REPAIR PROCEDURE B.</p> <ul style="list-style-type: none"> <li>- Replace: transmission, radiator, and hoses</li> <li>- Flush engine</li> <li>- Includes updating PCM/TCM, idle learn and alignment</li> </ul>	06200-5NB-A78RM	10.5 hrs	6ZF00	KG300	17-009H	06200-5NB-A58
A	Add if the vehicle has an accessory external transmission cooler		0.9 hr				

Inspection and do REPAIR PROCEDURE A and REPAIR PROCEDURE B - AWD

2180A9	<p><b>AWD</b> - Inspect the vehicle, then start at REPAIR PROCEDURE A, and finish with REPAIR PROCEDURE B.</p> <ul style="list-style-type: none"> <li>- Replace: transmission, radiator, and hoses</li> <li>- Flush engine</li> <li>- Includes updating PCM/TCM, idle learn, and alignment</li> </ul>	06200-5NC-A59RM	10.9 hrs	6ZF00	KG300	17-009I	06200-5NB-A58
2180A9	<p><b>AWD with ACC</b> - Inspect the vehicle, then start at REPAIR PROCEDURE A, and finish with REPAIR PROCEDURE B.</p> <ul style="list-style-type: none"> <li>- Replace: transmission, radiator, and hoses</li> <li>- Flush engine</li> <li>- Includes updating PCM/TCM, idle learn, and alignment</li> </ul>	06200-5NC-A69RM	10.9 hrs	6ZF00	KG300	17-009M	06200-5NB-A58
A	Add if the vehicle has an accessory external transmission cooler.		0.9 hr				
2180A9	<p><b>AWD with ACC and Idle-stop</b> - Inspect the vehicle, then start at REPAIR PROCEDURE A, and finish with REPAIR PROCEDURE B.</p> <ul style="list-style-type: none"> <li>- Replace: transmission, radiator, and hoses</li> <li>- Flush engine</li> <li>- Includes updating PCM/TCM, idle learn, and alignment</li> </ul>	06200-5NC-A79RM	10.9 hrs	6ZF00	KG300	17-009N	06200-5NB-A58
A	Add if the vehicle has an accessory external transmission cooler.		0.9 hr				

Inspection and do REPAIR PROCEDURE A and REPAIR PROCEDURE C

Operation Number	Description	Transmission Replacement Number	Flat Rate Time	Defect Code	Symptom Code	Template ID	Failed Part Number
2180B0	<p><b>2WD</b> - Inspect the vehicle, then start at REPAIR PROCEDURE A, and finish with REPAIR PROCEDURE C.</p> <ul style="list-style-type: none"> <li>- Replace: engine, transmission, radiator, and hoses</li> <li>- Flush heater core</li> <li>- Includes flush, updating PCM/TCM, idle learn and alignment</li> </ul>	06200-5NB-A58RM	13.1 hrs	6ZF00	KG300	17-009R	06200-5NB-A58
2180B0	<p><b>2WD with ACC</b> - Inspect the vehicle, then start at REPAIR PROCEDURE A, and finish with REPAIR PROCEDURE C.</p> <ul style="list-style-type: none"> <li>- Replace: engine, transmission, radiator, and hoses</li> <li>- Flush heater core</li> <li>- Includes flush, updating PCM/TCM, idle learn and alignment</li> </ul>	06200-5NB-A68RM	13.1 hrs	6ZF00	KG300	17-009S	06200-5NB-A58
A	Add if the vehicle has an accessory external transmission cooler.		0.9 hr				
2180B0	<p><b>2WD with ACC and Idle-stop</b> - Inspect the vehicle, then start at REPAIR PROCEDURE A, and finish with REPAIR PROCEDURE C.</p> <ul style="list-style-type: none"> <li>- Replace: engine, transmission, radiator, and hoses</li> <li>- Flush heater core</li> <li>- Includes flush, updating PCM/TCM, idle learn and alignment</li> </ul>	06200-5NB-A78RM	13.1 hrs	6ZF00	KG300	17-009T	06200-5NB-A58
A	Add if the vehicle has an accessory external transmission cooler.		0.9 hr				

Inspection and do REPAIR PROCEDURE A and REPAIR PROCEDURE C

2180B1	<p><b>AWD</b> - Inspect the vehicle, then start at REPAIR PROCEDURE A, and finish with REPAIR PROCEDURE C.</p> <ul style="list-style-type: none"> <li>- Replace: engine, transmission, radiator, and hoses</li> <li>- Flush heater core</li> <li>- Includes flush, updating PCM/TCM, idle learn and alignment</li> </ul>	06200-5NC-A59RM	13.5 hrs	6ZF00	KG300	17-009X	06200-5NB-A58
2180B1	<p><b>AWD with ACC</b> - Inspect the vehicle, then start at REPAIR PROCEDURE A, and finish with REPAIR PROCEDURE C.</p> <ul style="list-style-type: none"> <li>- Replace: engine, transmission, radiator, and hoses</li> <li>- Flush heater core</li> <li>- Includes flush, updating PCM/TCM, idle learn and alignment</li> </ul>	06200-5NC-A69RM	13.5 hrs	6ZF00	KG300	17-009Y	06200-5NB-A58
A	Add if the vehicle has an accessory external transmission cooler.		0.9 hr				
2180B1	<p><b>AWD with ACC and Idle-stop</b> - Inspect the vehicle, then start at REPAIR PROCEDURE A, and finish with REPAIR PROCEDURE C.</p> <ul style="list-style-type: none"> <li>- Replace: engine, transmission, radiator, and hoses</li> <li>- Flush heater core</li> <li>- Includes flush, updating PCM/TCM, idle learn and alignment</li> </ul>	06200-5NC-A79RM	13.5 hrs	6ZF00	KG300	17-009Z	06200-5NB-A58
A	Add if the vehicle has an accessory external transmission cooler.		0.9 hr				

**PARTS INFORMATION - REPAIR PROCEDURE A**

<b>Part Name</b>	<b>Part Number</b>	<b>Quantity</b>
ATF Warmer Kit (Includes O-Rings)	06224-5J4-305	1
Fitting (used only with accessory cooler)	25910-5NC-003	2

**REQUIRED MATERIALS – REPAIR PROCEDURE A**

<b>Part Name</b>	<b>Part Number</b>	<b>Quantity</b>
ATF Type 3.1 NOTE: 1 quart will fill 5 vehicles unless the vehicle has an accessory ATF cooler.	08200-9017A	1
Antifreeze/Coolant Type 2 NOTE: 1 gallon will fill 10 vehicles.	OL999-9011A	1

**PARTS INFORMATION – REPAIR PROCEDURE B**

<b>Part Name</b>	<b>Part Number</b>	<b>Quantity</b>
Transmission		1
2WD	06200-5NB-A58RM	
2WD with ACC	06200-5NB-A68RM	
2WD with ACC and auto idle stop	06200-5NB-A78RM	
AWD	06200-5NC-A59RM	
AWD with ACC	06200-5NC-A69RM	
AWD with ACC and auto idle stop	06200-5NC-A79RM	
Flange Bolt (12 x 70 mm)	90051-PE0-000	1
Flange Bolt (12 x 120 mm)	95701-12120-08	1
Flange Bolt (10 x 60 mm)	90168-TA1-A00	2
Flange Nut (12 mm)	90371-SAA-010	4
Flange Bolt (10 x 35 mm)	90163-SDA-A01	2
Pre-Chamber Gasket	18393-SDB-A00	1
Exhaust Pipe Gasket (ISHINO)	18212-SA7-003	2
Self-Lock Nut (10 mm)	90212-SA5-003	9
Bolt (12 point 8 x 21 mm)	90113-S10-000	8
Flange Bolt (12 x 29 mm)	90382-SH9-003	2
Shaft Ring Seal Kit (AWD)	06235-5L9-000	1
Flange Nut (12 mm)	90362-SZA-A00	4
Split Pin (3.0 x 22 mm)	94201-30220	2
Castle Nut (14 mm)	90365-STX-A00	2
Flange Bolt (12 x 30 mm)	90161-SHJ-A00	4
Flange Bolt (14 x 140 mm)	90165-TZ5-A10	2
Flange Bolt (10 x 125 mm)	90165-TK8-A00	2
Snap Ring (32 x 2.2 mm)	44319-STX-A01	1
Set Ring (32 x 2.2 mm)	44319-STX-A60	1
Flange Bolt (10 x 30 mm)	90163-SDB-A00	3
Radiator (DENSO)	19010-5J6-A01	1
Warmer Hose B (ATF)	19433-5J2-A00	1
Water Hose A	19521-5J6-A50	1
Water Hose C	19523-5J6-A10	1
Water Hose (Lower) (A)	19502-5J6-A50	1
Water Hose (Lower) (B)	19504-5J2-A50	1
Water Hose (Upper)	19501-5J6-A10	1
Reserve Tank Tube B	19104-5J6-A00	1
Reserve Tank Tube A	19103-5J6-A00	1
Water Inlet Hose	79721-TZ5-A10	1

Water Outlet Hose	79725-TZ5-A11	1
Warmer Hose A (ATF)	19432-5J2-A50	1
Thermostat Cover Assembly	19315-5J2-A01	1
O-Ring (DENSO)	91307-RTA-005	2
Reserve Tank Joint	19106-RSA-G00	1
Accessory Cooler Kit (ATF) (If equipped)	06255-5NC-326	1

**REQUIRED MATERIALS – REPAIR PROCEDURE B**

<b>Part Name</b>	<b>Part Number</b>	<b>Quantity</b>
ATF Type 3.1 NOTE: 1 quart will fill 5 vehicles unless the vehicle has an accessory ATF cooler.	08200-9017A	1
Coolant Type 2	OL999-9011A	12

**PARTS INFORMATION – REPAIR PROCEDURE C**

<b>Part Name</b>	<b>Part Number</b>	<b>Quantity</b>
Transmission 2WD 2WD with ACC 2WD with ACC and auto idle stop AWD AWD with ACC AWD with ACC and auto idle stop	06200-5NB-A58RM 06200-5NB-A68RM 06200-5NB-A78RM 06200-5NC-A59RM 06200-5NC-A69RM 06200-5NC-A79RM	1
Cylinder Block Assembly	10002-5J6-A10	1
Cylinder Head Assembly (Front)	10004-5J6-A11	1
Cylinder Head Assembly (Rear)	10005-5J6-A11	1
Flange Bolt (12 x 70 mm)	90051-PE0-000	1
Flange Bolt (12 x 120 mm)	95701-12120-08	1
Flange Bolt (10 x 60 mm)	90168-TA1-A00	2
Flange Nut (12 mm)	90371-SAA-010	4
Flange Bolt (10 x 35 mm)	90163-SDA-A01	2
Pre-Chamber Gasket	18393-SDB-A00	1
Exhaust Pipe Gasket (ISHINO)	18212-SA7-003	2
Self-Lock Nut (10 mm)	90212-SA5-003	9
Bolt (12 point 8 x 21 mm) (AWD Only)	90113-S10-000	8
Flange Bolt (10 x 29 mm)	90382-SH9-003	2
Shaft Ring Seal Kit (AWD)	06235-5L9-000	1
Flange Nut (12 mm)	90362-SZA-A00	4
Split Pin (3.0 x 22 mm)	94201-30220	2
Castle Nut (14 mm)	90365-STX-A00	2
Flange Bolt (12 x 30 mm)	90161-SHJ-A00	4
Flange Bolt (14 x 140 mm)	90165-TZ5-A10	2
Flange Bolt (14 x 125 mm)	90165-TK8-A00	2
Snap Ring (32 x 2.2 mm)	44319-STX-A01	1
Set Ring (32 x 2.2 mm)	44319-STX-A60	1
Flange Bolt (10 x 30 mm)	90163-SDB-A00	3
Spindle Nut	90305-S3V-A11	2
EGR Pipe Gasket A	18716-R70-A01	1
EGR Pipe Gasket B	18719-R70-A01	1

Exhaust Chamber Gasket (Nippon Leakless)	18115-5G0-A01	2
Self-Lock Nut (8 mm)	90212-RCA-A01	8
Intake Manifold Cover Gasket (Upper)	17112-5G0-A01	1
Intake Manifold Gasket (Nippon Leakless)	17105-R9P-A01	1
Front Intake Manifold Base Gasket	17055-R9P-A01	1
Rear Intake Manifold Base Gasket	17065-R9P-A01	1
Throttle Body Gasket	16176-RYE-A10	1
Flange Bolt (10 x 105 mm)	95801-10105-08	2
Flange Bolt (10 x 85 mm)	90002-R70-A00	1
Timing Belt Idler Bolt	14551-RCA-A01	1
Flange Bolt (12 x 45 mm)	90165-SDA-A00	1
Flange Bolt (10 x 30 mm)	90103-SV4-013	3
EGR Valve Gasket (ISHINO)	18715-PB2-000	1
O-Ring (31.2 x 4.1 mm) (NOK)	91314-PH7-003	2
Fuel Joint Pipe Set	16012-R9P-305	1
O-Ring	91311-5A2-A01	1
Sealing Washer (12 mm)	16705-5A2-A01	2
Injector Clip	16451-5A2-A01	6
Injector Seal Set	16453-R9P-A00	1
Rear Water Passage Gasket (NIPPON LEAKLESS)	19412-5G0-A01	1
Front Water Passage Gasket (NIPPON LEAKLESS)	19411-5G0-A02	1
Rear Cylinder Head Gasket (NIPPON LEAKLESS)	12261-R9P-A01	1
Front Cylinder Head Gasket (NIPPON LEAKLESS)	12251-R9P-A01	1
Radiator (DENSO)	19010-5J6-A01	1
Warmer Hose B (ATF)	19433-5J2-A00	1
Water Hose A	19521-5J6-A50	1
Water Hose C	19523-5J6-A10	1
Water Hose (Lower) (A)	19502-5J6-A50	1
Water Hose (Lower) (B)	19504-5J2-A50	1
Water Hose (Upper)	19501-5J6-A10	1
Reserve Tank Tube B	19104-5J6-A00	1
Reserve Tank Tube A	19103-5J6-A00	1
Water Inlet Hose	79721-TZ5-A10	1

Water Outlet Hose	79725-TZ5-A11	1
Thermostat Cover Assembly	19315-5J2-A01	1
Warmer Hose A (ATF)	19432-5J2-A50	1
Connecting Pipe	19505-5J2-A00	1
Water Passage	19410-5J2-A00	1
O-Ring (Denso)	91307-RTA-005	2
Reserve Tank Joint	19106-RSA-G00	1
Reserve Tank Cap	19102-5J6-A00	1
Oil Filter	15400-PLM-A02	1
Accessory Cooler Kit (If equipped)	06255-5NC-326	1

#### REQUIRED MATERIALS – REPAIR PROCEDURE C

Part Name	Part Number	Quantity
ATF Type 3.1 (only if the vehicle is equipped with an accessory cooler)	08200-9017A	1
Coolant Type 2	OL999-9011A	3
Acura Engine Oil 0W-20	08798-9073	7

## TOOL INFORMATION

Part Name	Model Number	Quantity
Coolant Flush Kit Pump and Filter Set	VSB02C000045	1
9 A/T Pressure Test Kit	VSB02C000046	1
9 A/T Bucket and Hose Set	VSB02C000047	1
9 A/T Adapter and Hardware Set	VSB02C000048	1

### NOTE:

- Each dealer was sent one of each of these tools. If you need additional tools, contact the Honda Tool and Equipment Program at 888-424-6857.
- Individual items in the kit and sets are not available separately. You must order the complete kit or set.

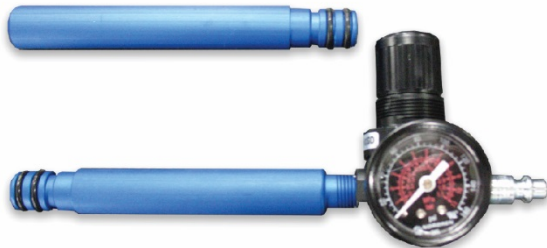
Coolant Flush Kit Pump and Filter Set - VSB02C000045



9 A/T Adapter and Hardware Set - VSB02C000048



9 A/T Pressure Test Kit - VSB02C000046

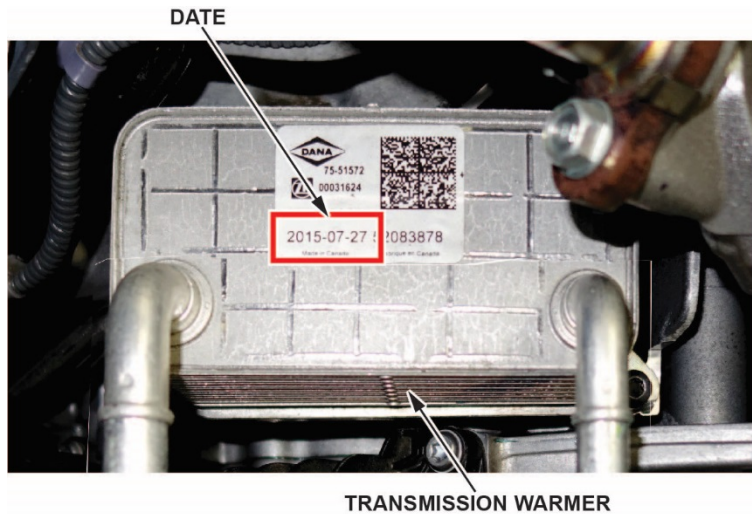


9 A/T Bucket and Hose Set - VSB02C000047



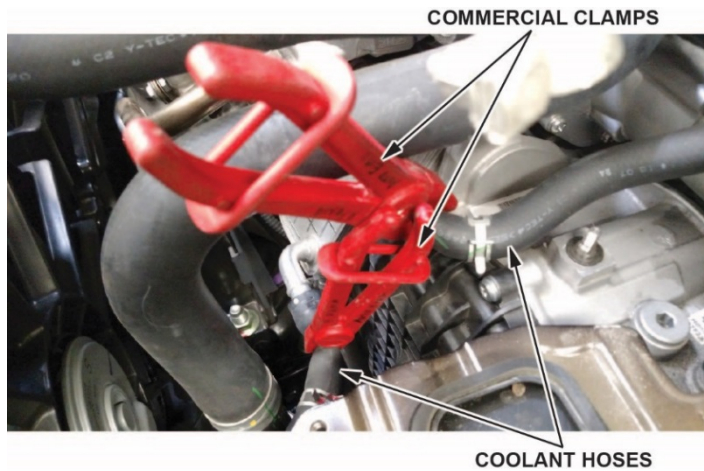
## INSPECTION PROCEDURE

1. Inspect the date on the transmission warmer. The affected transmission warmers were built between April 28, 2015 (2015-04-28) and July 15, 2015 (2015-07-15).
  - If the build date is within the date range, go to [REPAIR PROCEDURE A](#).
  - If the build date is before or after the date range, no further action is needed. Return the vehicle to the client.

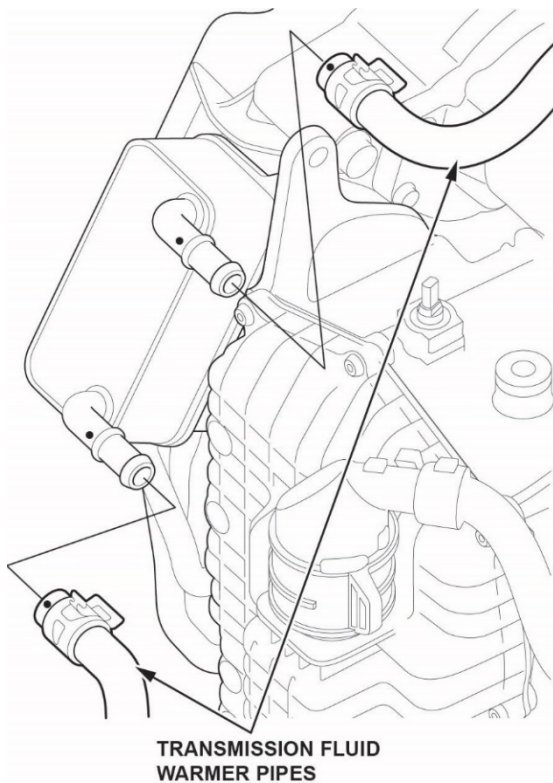


## REPAIR PROCEDURE A

1. Raise the vehicle on a lift.
2. Remove the splash shield. Refer to the service information.
3. Remove the air cleaner. Refer to the service information.
4. Remove the intake air guide. Refer to the service information.
5. Remove the 12-volt battery. Refer to the service information.
6. Remove the battery box. Refer to the service information.
7. Remove the connector bracket. Refer to the service information.
8. Using commercially-available clamps, pinch off the coolant hoses.



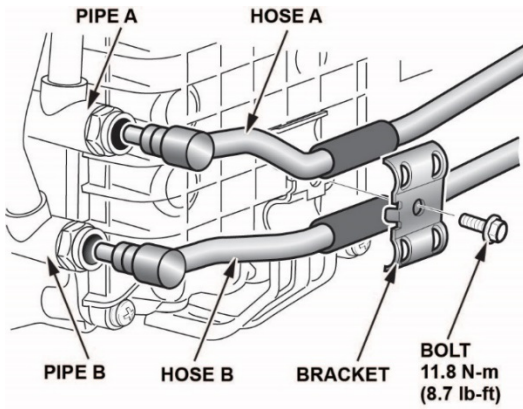
9. Remove the coolant hoses from the transmission warmer.



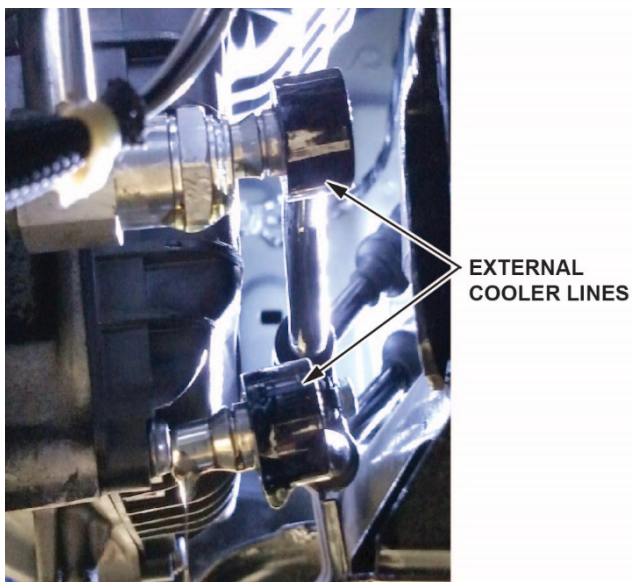
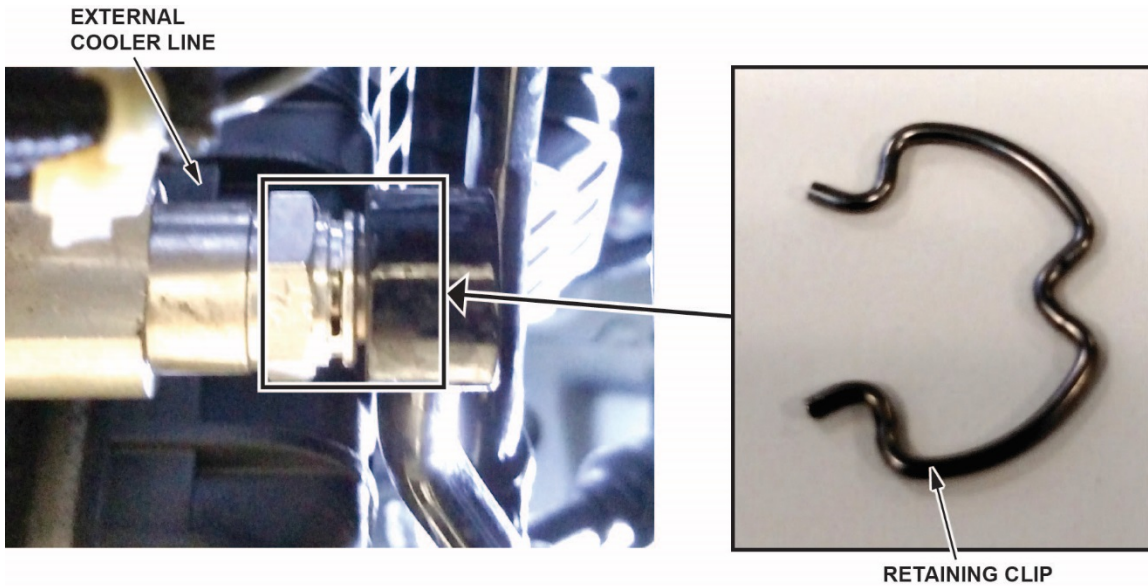
10. Clean the connection points around the transmission fluid warmer pipes.
  - If the vehicle is not equipped with an accessory external cooler, go to step 12.
  - If the vehicle is equipped with an accessory external cooler, go to step 11.

11. Detach the accessory transmission cooler hoses.

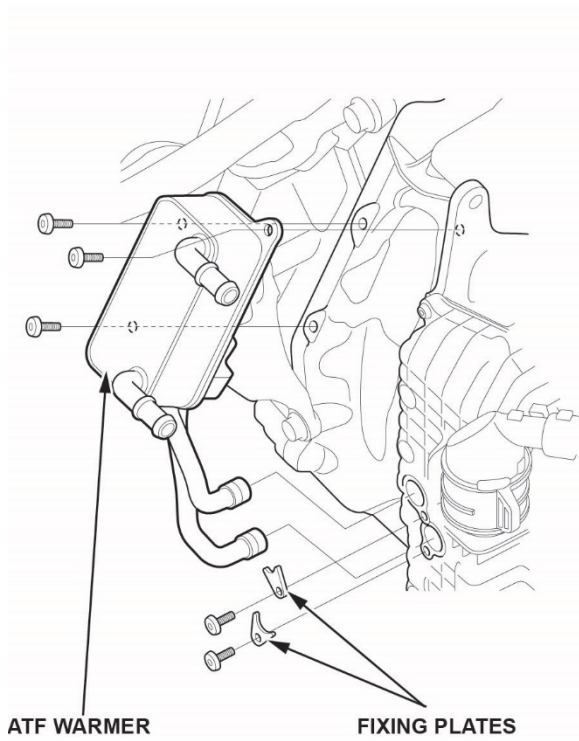
- Remove the bolt and bracket as shown.



- Push the retaining clip out, and detach the external accessory cooler lines.



12. Remove the 3 hold down bolts and 2 fixing plate bolts to remove the transmission warmer. Place the warmer on a clean surface.



**WARMER WITH  
ACCESSORY  
COOLER LINES**

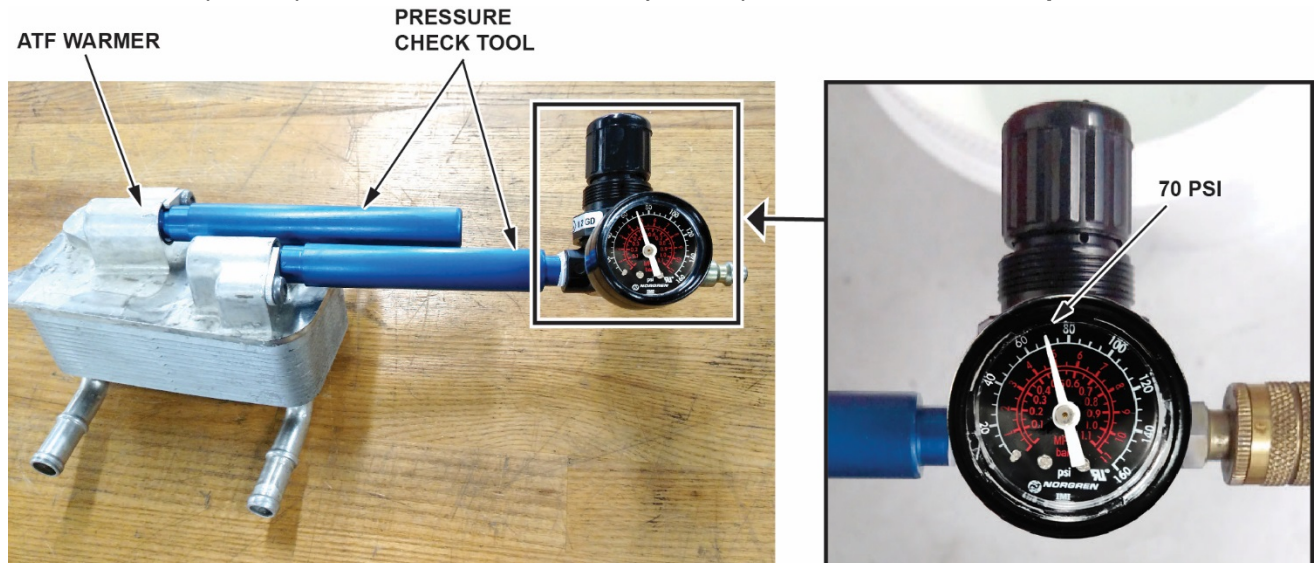


**WARMER WITHOUT  
ACCESSORY  
COOLER LINES**



13. Prepare the transmission warmer to check for leaks.

- Remove the original ATF lines from the warmer.  
NOTE: Be careful not to damage the lines as you will reuse them.
- Install the pressure check tool as shown with the fixing plates and torque the bolts to **10 N·m (7 lb-ft)**.
- Fill a bucket with warm water.
- Connect shop air to pressurize the warmer and adjust the pressure check tool to **70 psi**.



14. Check the transmission warmer for leaks by submerging the warmer completely under the water and watching for bubbles.

NOTE: Some bubbles are normal when the transmission warmer is first submerged and will come to a stop. If there is a leak, there will be a steady stream of bubbles coming from the transmission warmer.

- If there are no bubbles coming from the warmer, continue with the warmer replacement. Go to step 15.
- If there are bubbles, take photos (see Photos) and check to see if the vehicle also overheated by checking the client responses on the RO.
  - If the transmission warmer leaks, but the engine **did not overheat**, go to [REPAIR PROCEDURE B](#).
  - If the transmission warmer leaks, and the engine **overheated**, go to [REPAIR PROCEDURE C](#).



## Photos

If there are bubbles because of a leaking transmission warmer, take photos of the bubbles during the pressure test, the transmission warmer serial number, and the VIN.

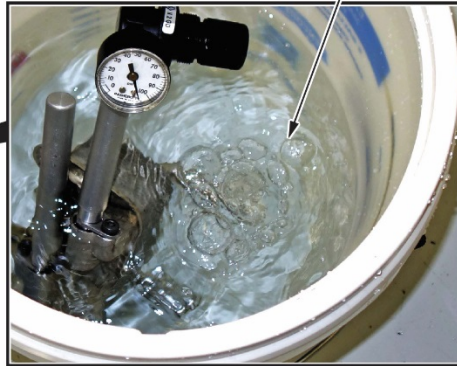
- The pressure test

ATF WARMER PRESSURE TEST



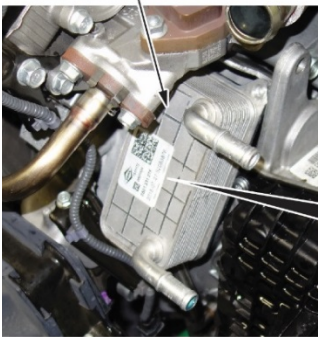
*Take this photo:*

BUBBLES



- The transmission warmer serial number

TRANSMISSION WARMER



*Take this photo:*



- VIN

VIN LABEL



*Take this photo:*



### NOTE:

- These photos must be submitted with any warranty claim where the transmission is replaced.
- Make sure you install the leaking transmission warmer on the original transmission to be returned to the remanufacturing facility. Any transmission replacement claims that do not have the leaking warmer installed on the returned transmission may be subject to debit.
- Any transmission replacement claims that do not include the required photos may be subject to debit.

## Unacceptable Photos

Photos must correspond to the warranty claim submittal standards. Photos may be rejected for the following reasons:

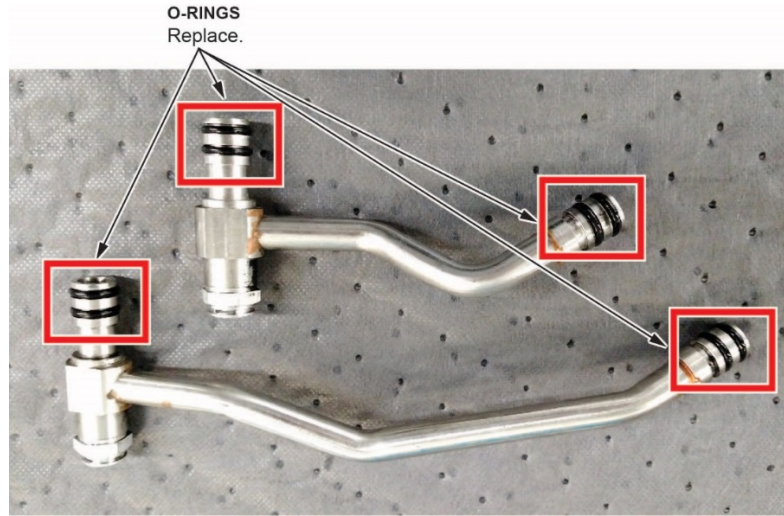
- Out of focus and unreadable
- Too small of a file size
- Too dark

15. Remove the two ATF lines from the transmission warmer, then remove the 8 O-rings on the pipes by gently pushing the O-rings off with your fingers.

- If the vehicle is equipped with an external cooler, go to step 16.
- If the vehicle is not equipped with an external cooler, go to step 17.

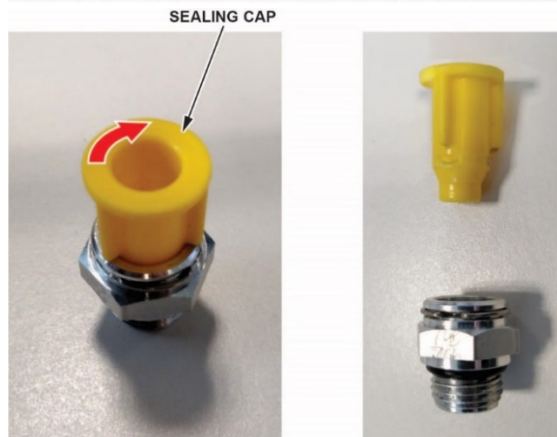
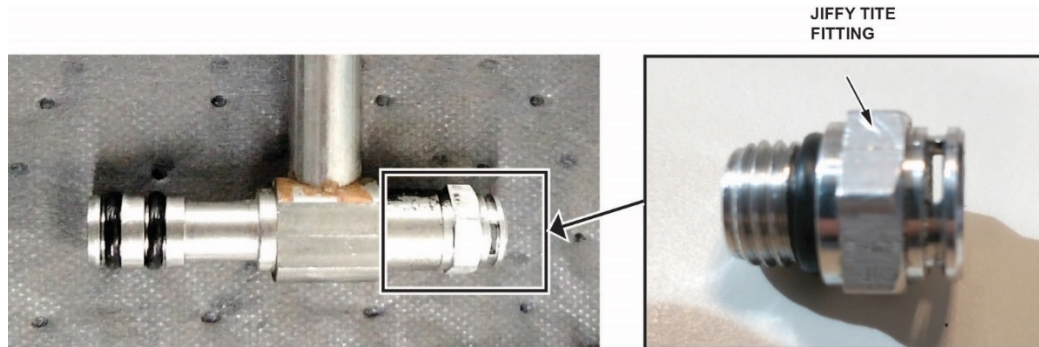
NOTE:

- Do not use picks or screwdrivers to remove the O-rings as you may damage the sealing surface.



16. Remove the Jiffy-Tite fittings.

- Remove the fitting by using two 19 mm wrenches. Use one wrench to hold the ATF tube, and remove the fitting with the other.
- Clean the pipes.  
NOTE: Make sure your hands are clean, or wear gloves, to avoid contaminating the Jiffy-Tite fitting.
- Remove the sealing cap by turning it ¼ turn to the right, then install the Jiffy-Tite fitting, and torque it to **22 N-m (16 lb-ft)**.

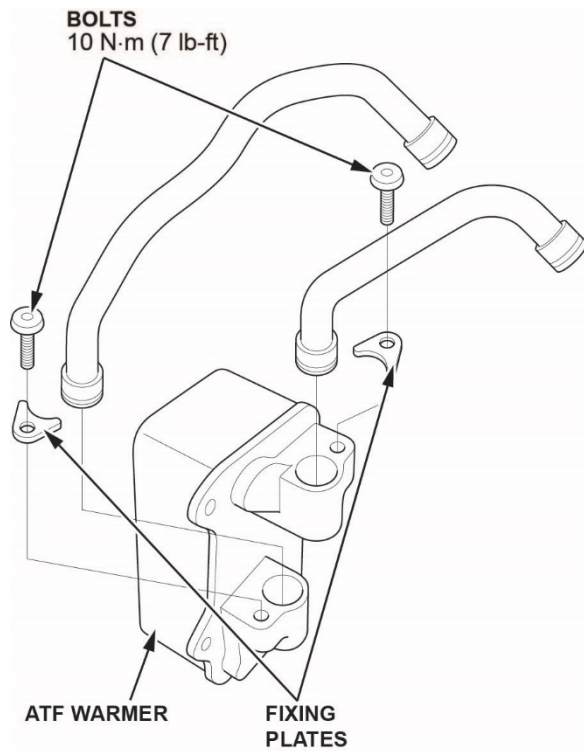


17. Clean the pipes, then install 4 new O-rings.

NOTE: Make sure your hands or gloves are clean to avoid contaminating the O-rings.

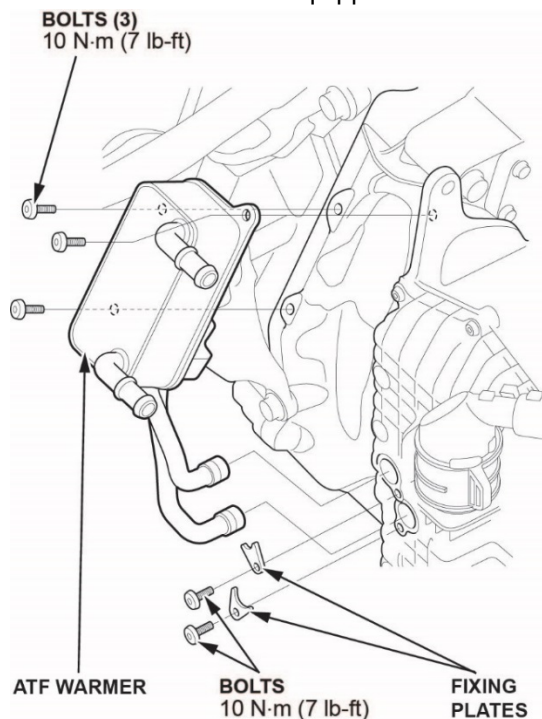
18. Coat the O-rings with ATF 3.1.

19. Install the original ATF warmer pipes onto the new transmission warmer using the fixing plates. Torque the bolts to **10 N·m (7 lb-ft)**.

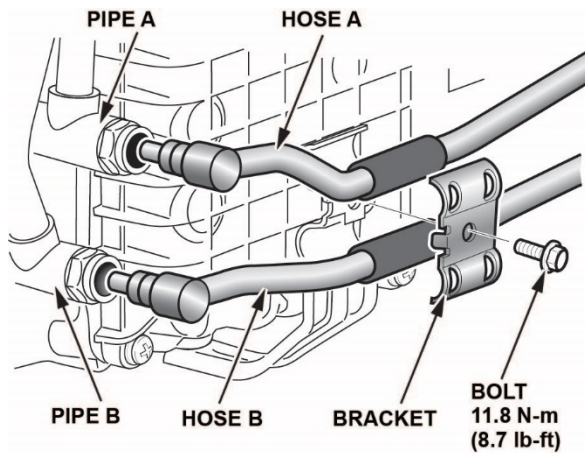


20. Install the transmission warmer to the transmission. Install the ATF warmer pipes using fixing plates. Torque the bolts to **10 N·m (7 lb-ft)**.

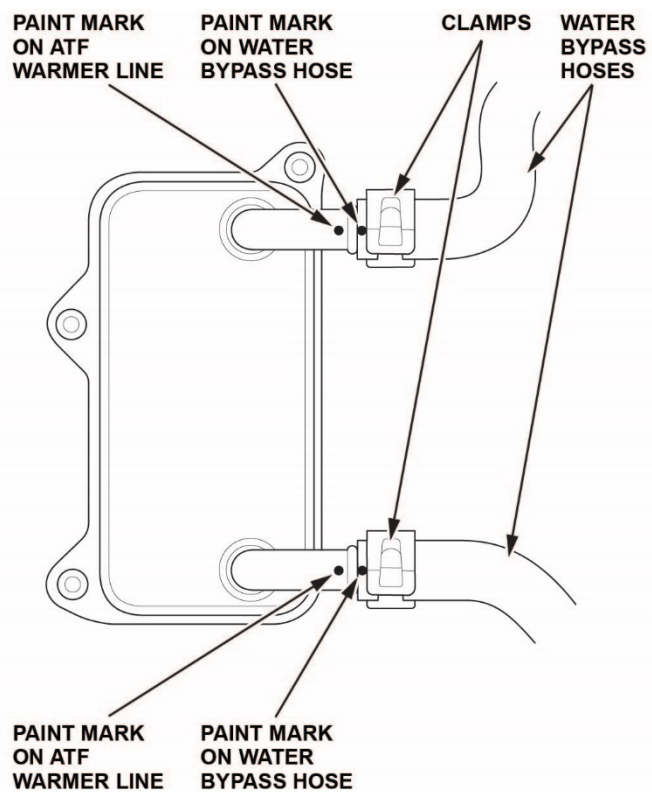
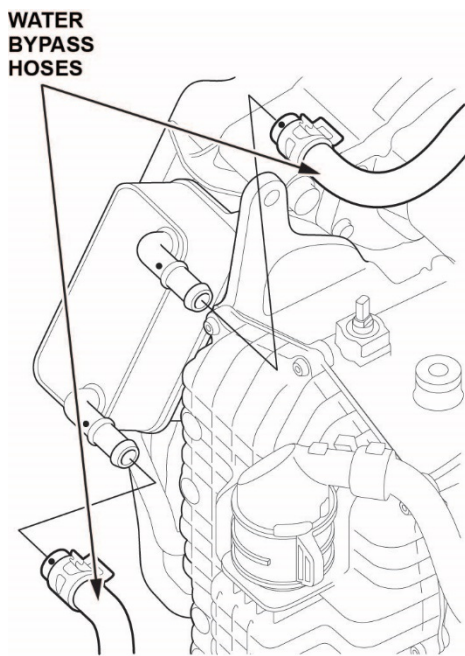
- If the vehicle is equipped with an accessory external cooler, go to step 21.
- If the vehicle is not equipped with an accessory external cooler, go to step 22.



21. Install hose A to line A and hose B to line B as shown.



22. Connect the water bypass hoses. Make sure you align the paint marks on the ATF warmer lines with the paint marks on the water bypass hoses as shown. Secure the water bypass hoses with the clamps.



23. Install the connector bracket.

24. Install the battery box and the 12-volt battery.

25. Install the intake air guide and the air cleaner.

26. Fill the engine with coolant.

27. Check the ATF, and adjust as needed. Refer to the service information.

NOTE: Make sure you use the recommended Honda ATF Type 3.1 if you have to add fluid. Using the wrong ATF can affect shift quality.

28. Check for any ATF or coolant leaks.

29. Install the splash shield.

## REPAIR PROCEDURE B

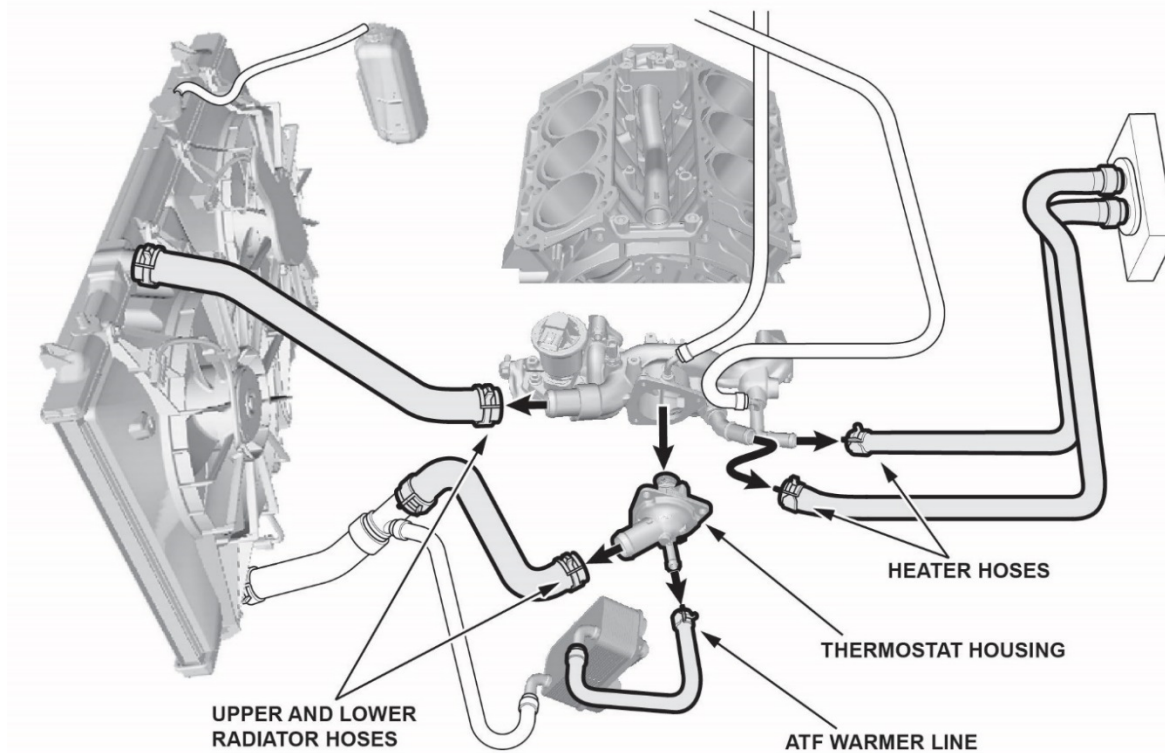
### NOTE:

- Use this procedure only if the transmission warmer failed the pressure test and the engine did not overheat. If the engine overheated, go to REPAIR PROCEDURE C.
  - Fill in the flush work sheet (see page 39), and attach it to the RO.
1. Remove the transmission. Refer to the service information.

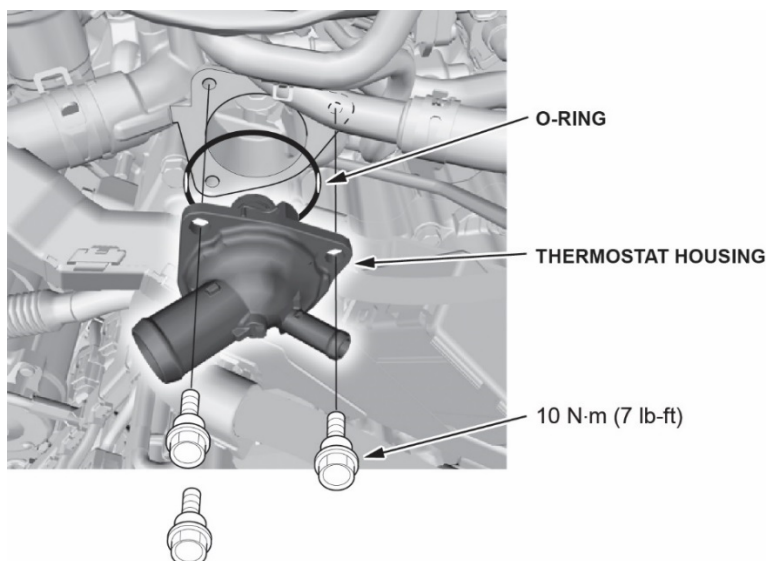
### Engine and Heater Core Flush Procedure

2. Disconnect the upper and lower radiator hoses at the engine.

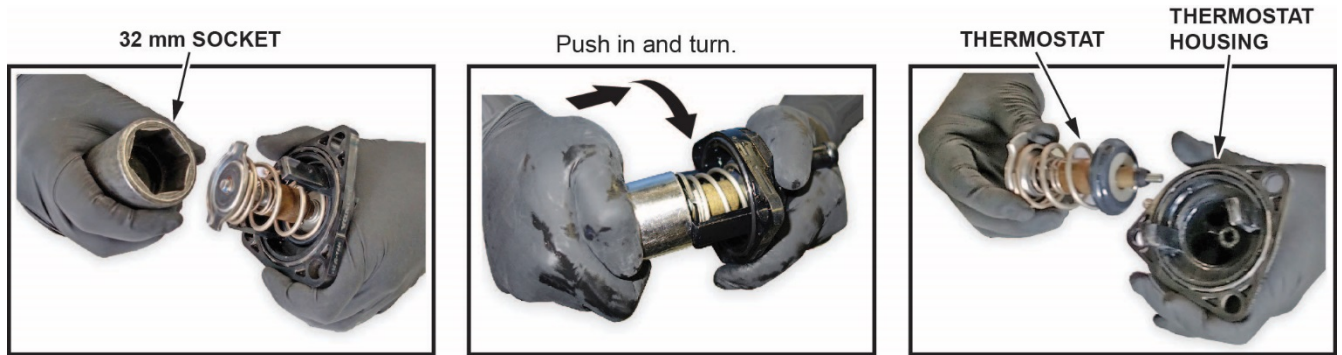
**DISCONNECT:**



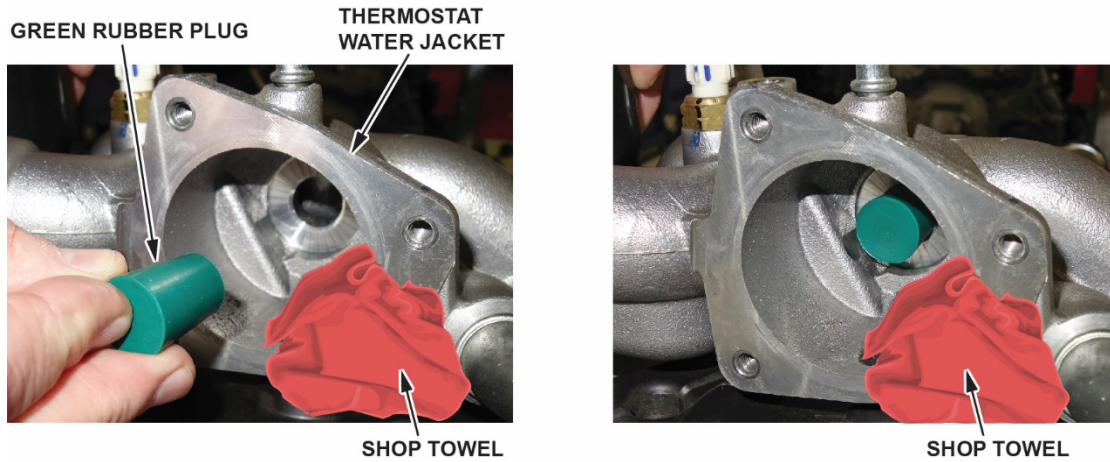
3. Disconnect the two heater hoses at the engine.
4. Disconnect the ATF warmer line (coolant).
5. Remove the thermostat housing.



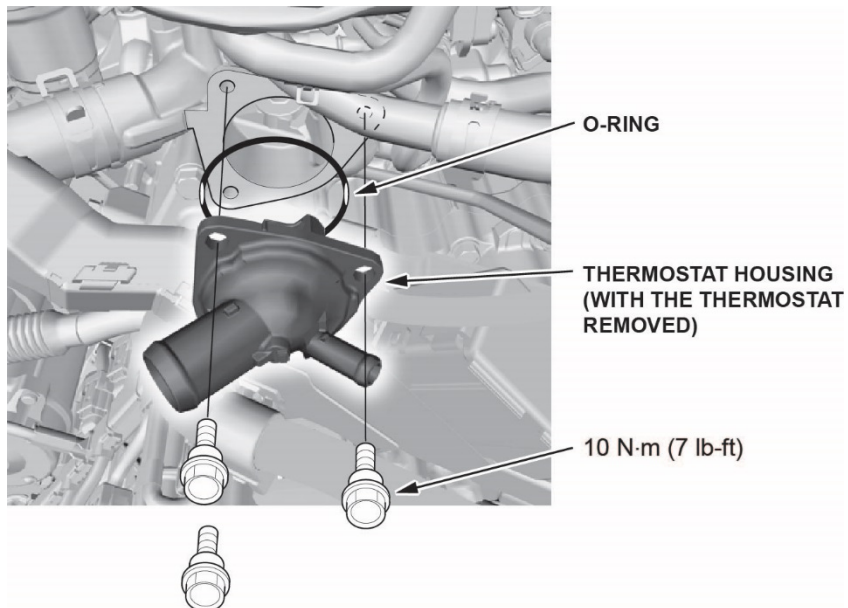
- Remove the thermostat from the housing using a 32 mm socket. Push in on the thermostat, and twist the socket. Once the thermostat has released from the housing, remove the thermostat.



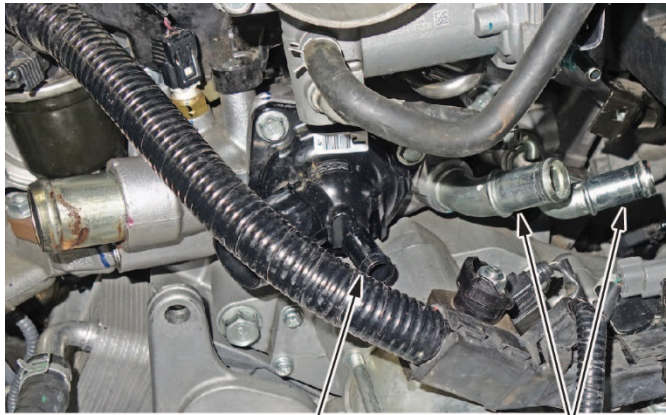
- Install the green rubber plug from the coolant flush kit into the thermostat water jacket as shown. To prevent the plug from falling into the water passage, cover the opening with a shop towel.



- Remove the shop towel, and install the thermostat housing without the thermostat.

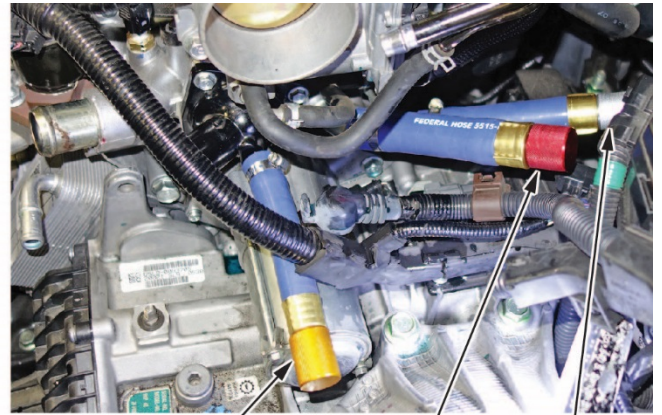


9. Using the three colored plugs from the flush kit, cap off both heater hoses and the ATF transmission warmer line as shown.



ATF TRANSMISSION  
WARMER LINE

HEATER HOSES



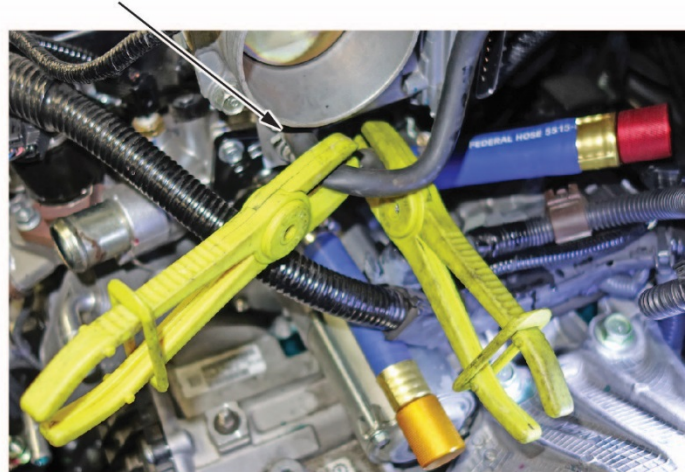
YELLOW PLUG  
(ATF WARMER LINE)

RED PLUG  
(HEATER  
HOSE)

SILVER PLUG  
(HEATER  
HOSE)

10. Using commercially-available clamps, clamp the throttle body coolant lines as shown.

Clamp both of the throttle body coolant lines.



11. Remove the lid from the SUPPLY bucket, and install the large (1.5 in.) return hose with the T-fitting through the hole in the lid as shown.

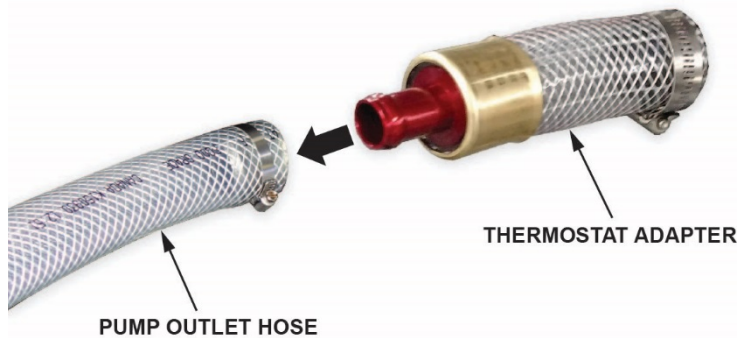


ENGINE RETURN HOSE

T-FITTING

SUPPLY BUCKET

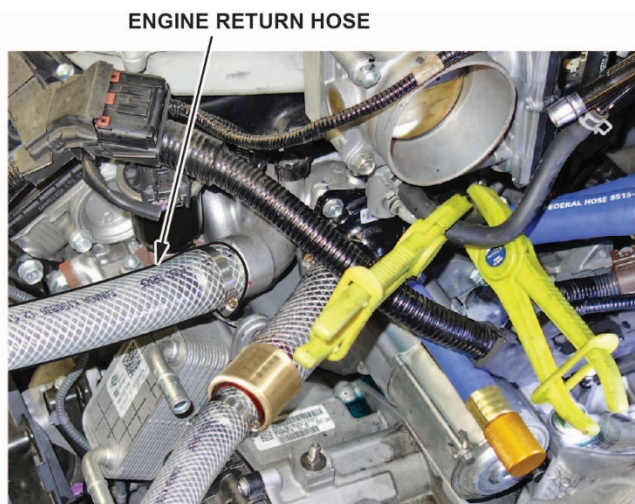
12. Install the thermostat adaptor to the pump outlet hose.



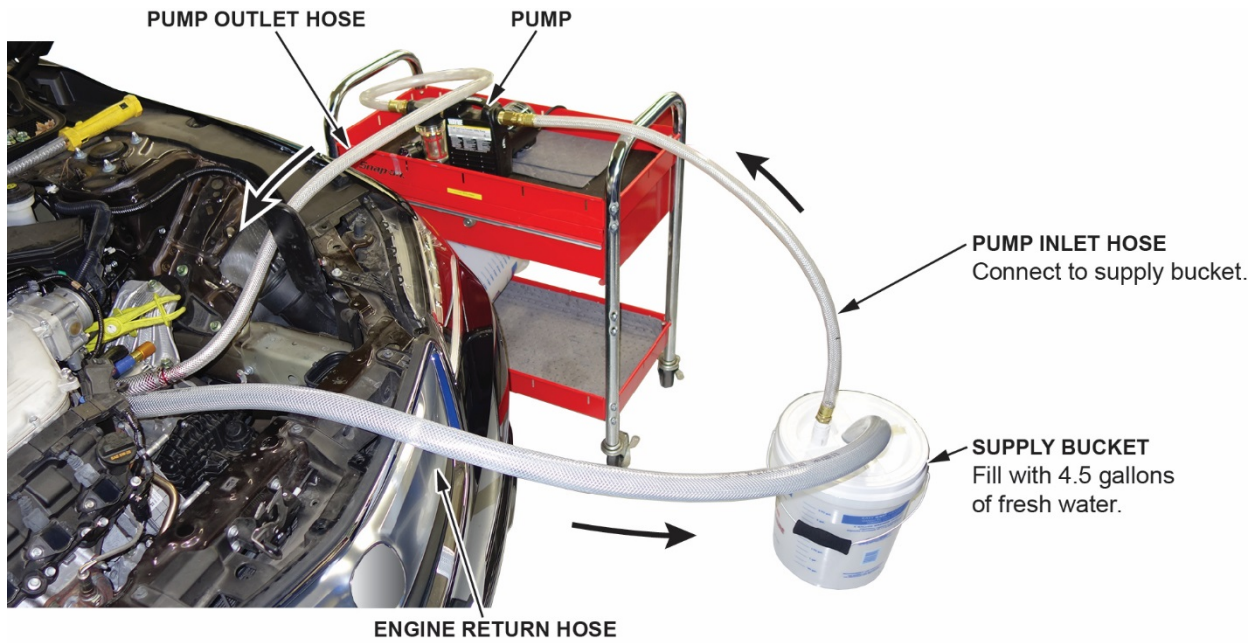
13. Install the pump outlet hose to the thermostat housing.



14. Install the return hose to the water passage as shown, then fill the bucket with 4.5 gallons of fresh water, and install the lid.



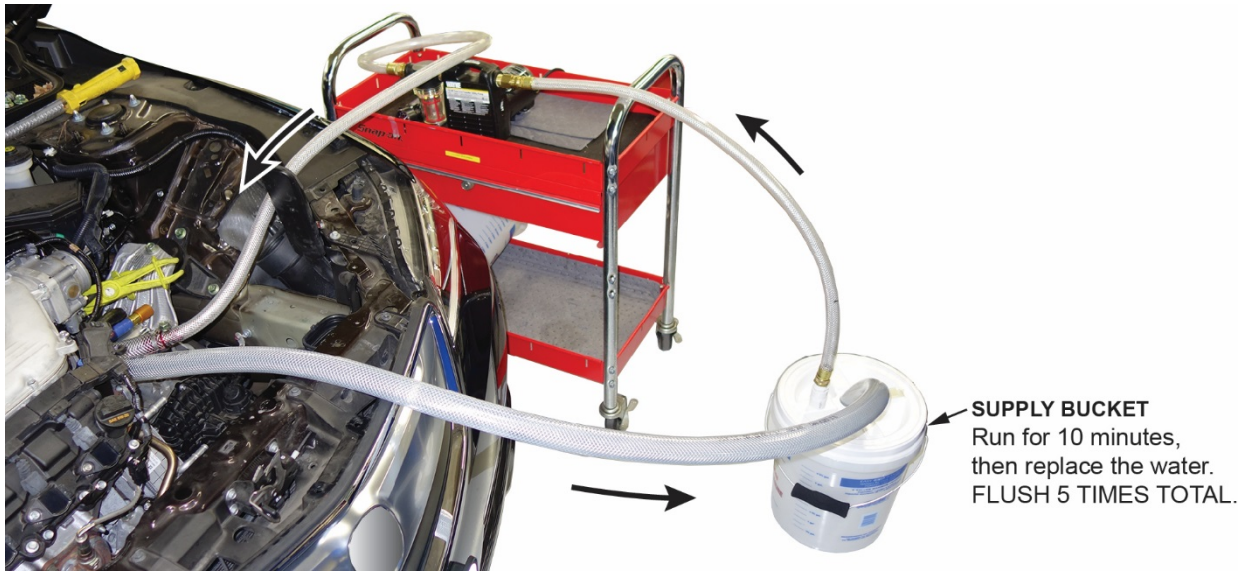
15. Install the pump inlet line to the SUPPLY bucket lid as shown.



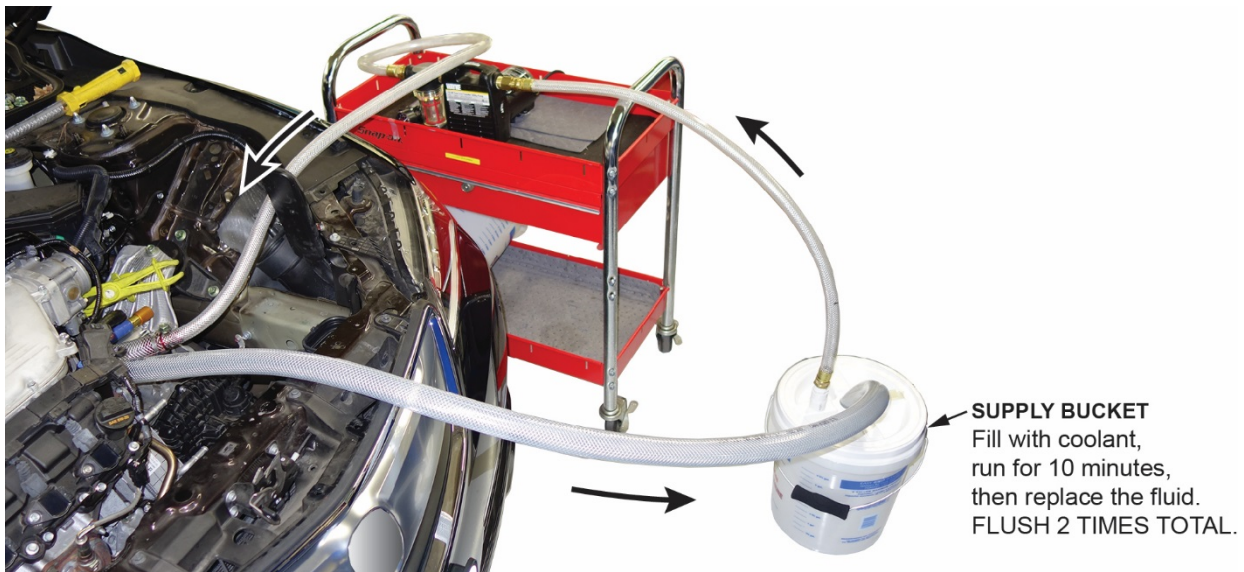
NOTE: If this is the first time using the pump, remove the priming plug, fill the pump with clean water, then reinstall the plug.



16. Turn on the pump, and let it run for 10 minutes.
17. After 10 minutes, turn the pump off and dump all the contents of the SUPPLY bucket into the waste coolant container. Wipe off any oil residue from the bucket, refill the bucket with water, then repeat the flush 4 more times (50 minutes total time flushing with water).

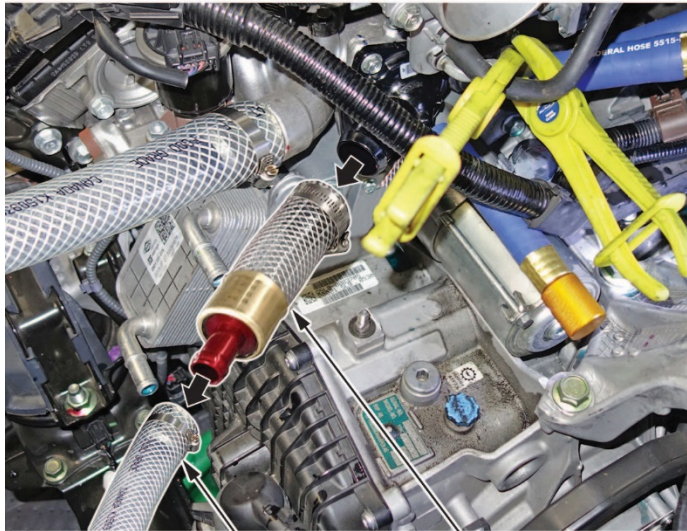


18. Substitute the water for coolant (OL999-9011A), and run the pump for 10 minutes to circulate the fluid.



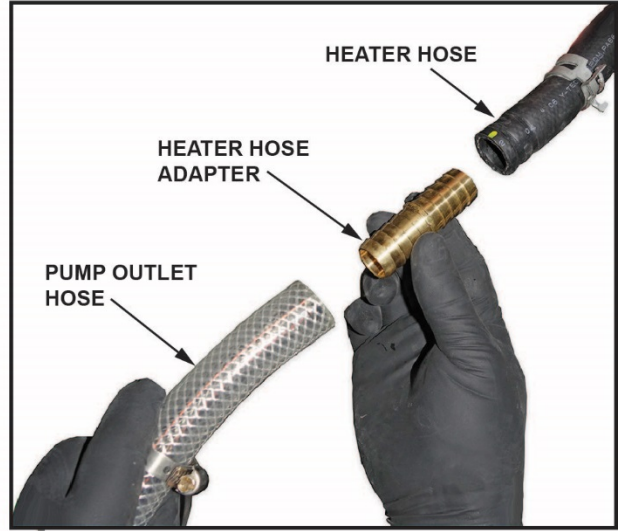
19. After 10 minutes, turn the pump off and dump all the contents of the SUPPLY bucket into the waste coolant container. Refill the SUPPLY bucket with coolant, and run the pump for 10 minutes.

20. Disconnect the pump outlet line from the engine, and remove the thermostat adaptor. Replace the outlet adaptor with the 0.75 in. heater hose adaptor.



**PUMP OUTLET HOSE**  
Disconnect.

**THERMOSTAT ADAPTER**

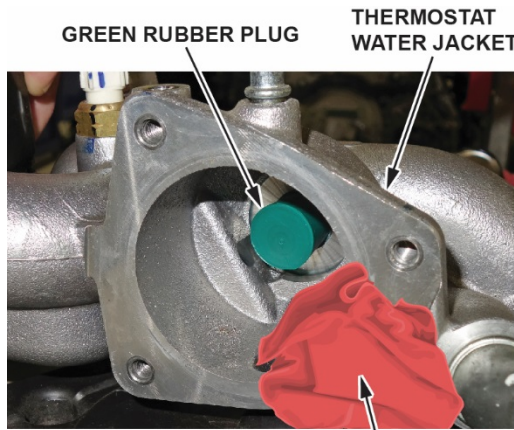


**HEATER HOSE**

**HEATER HOSE ADAPTER**

**PUMP OUTLET HOSE**

21. Remove the thermostat cover, remove the green rubber plug, and return it to the coolant flush kit. To prevent the plug from falling into the water passage, cover the passage with a shop towel.



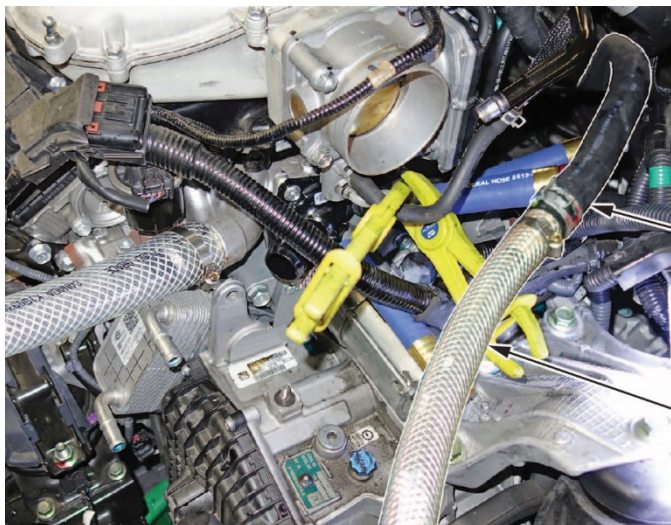
**GREEN RUBBER PLUG**

**THERMOSTAT WATER JACKET**

**SHOP TOWEL**



22. Connect the pump outlet hose to the heater hose as shown.



**HEATER HOSE**

**PUMP OUTLET HOSE**

23. Install the heater core return hose through the DUMP bucket lid.

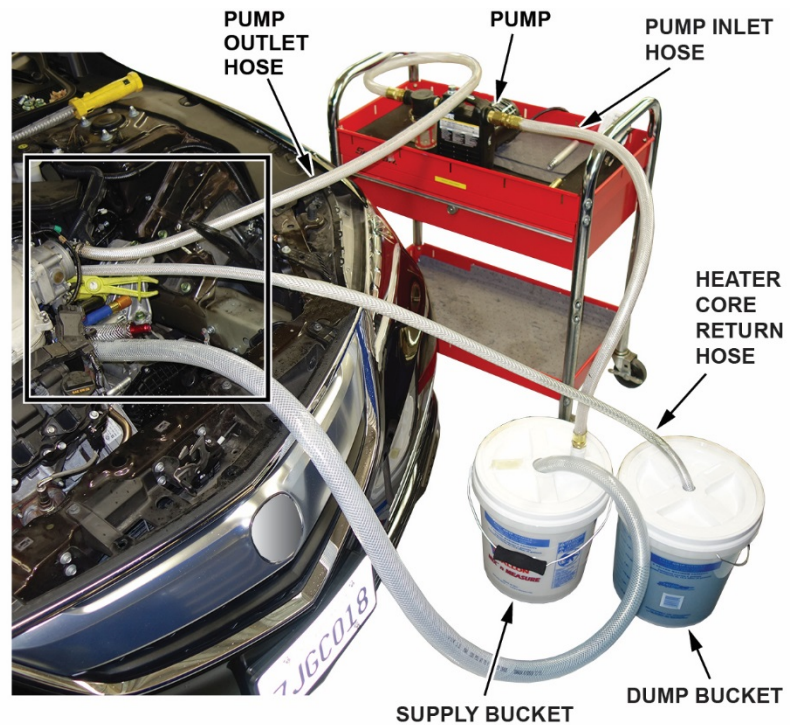
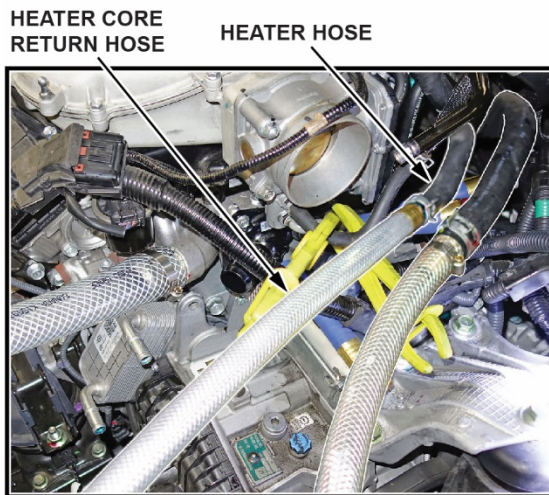


HEATER CORE  
RETURN HOSE

T-FITTING

DUMP BUCKET

24. Attach the heater core return hose to the heater hose as shown.



PUMP  
OUTLET  
HOSE

PUMP

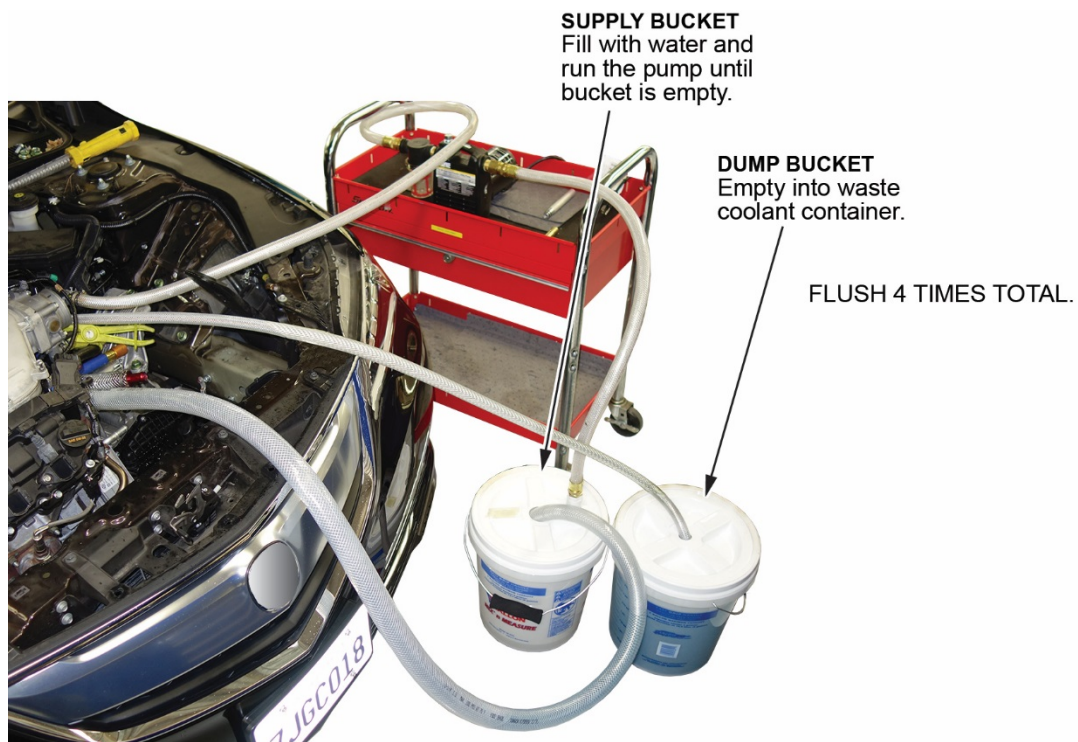
PUMP INLET  
HOSE

HEATER  
CORE  
RETURN  
HOSE

SUPPLY BUCKET

DUMP BUCKET

25. Fill the SUPPLY bucket with water, and run the pump until the SUPPLY bucket is empty.



26. Empty the DUMP bucket into the waste coolant container.

27. Repeat the flush (steps 25 and 26) 3 more times.

28. Empty the DUMP bucket into the waste coolant container and wipe off any oil residue from the bucket.

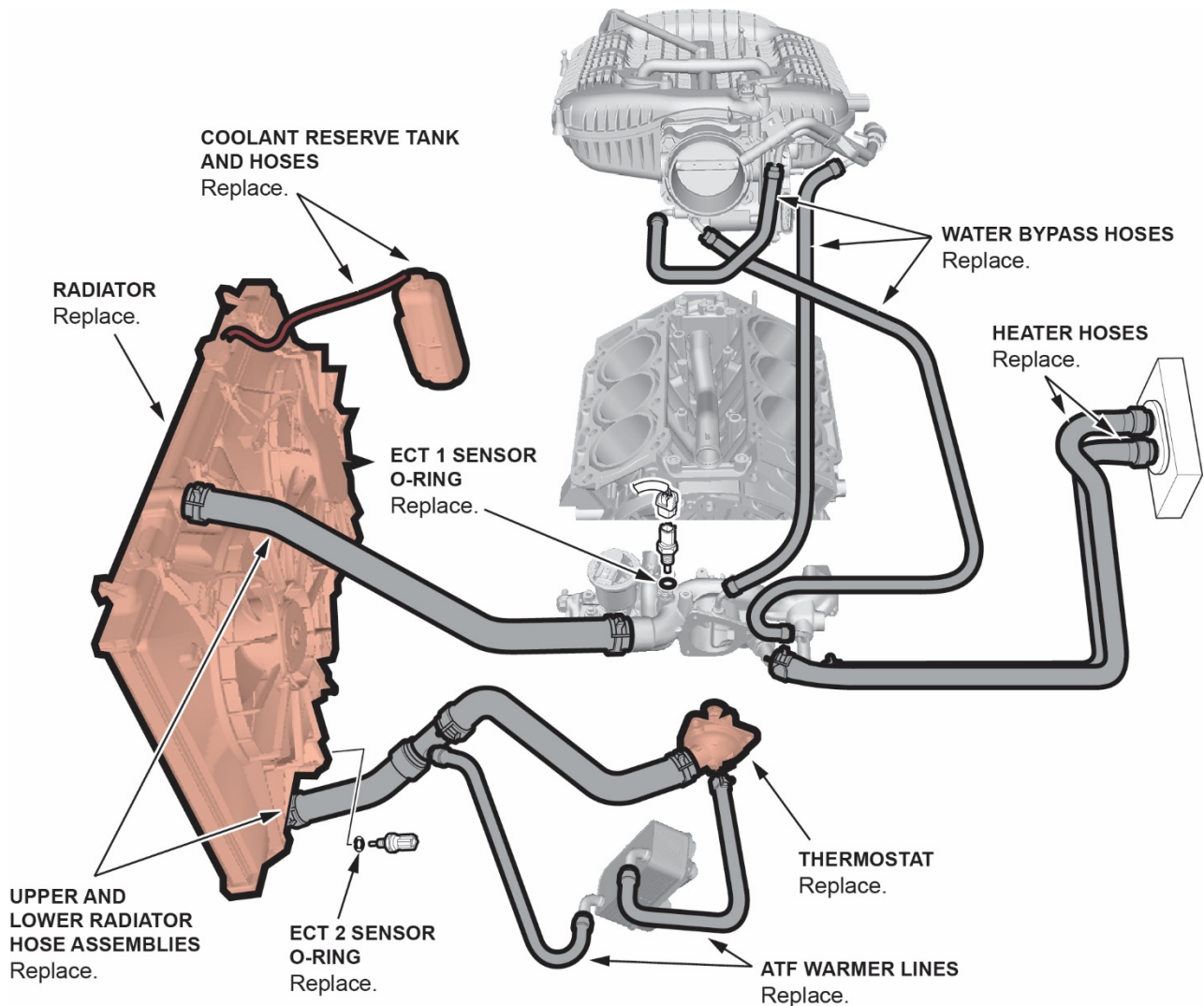
29. Remove the pump and return hoses, throttle body hose clamps, and the three colored plugs from the vehicle.

## Reassemble Vehicle

1. Replace the accessory cooler, if equipped.
2. Replace the radiator, the 10 indicated coolant hoses, thermostat, coolant reserve tank and hoses, and the 2 ECT sensor (1 and 2) O-rings. Refer to the image for the location of all the components.

### NOTE:

- **Make sure to remove the green rubber plug that was installed in the thermostat water jacket and return it to the flush kit.**
- **When refilling the cooling system after the flush is complete, some oil may be present in the cooling system. Thorough testing has shown the amount left over after the flush procedure is within acceptable limits provided the flush procedure was followed completely.**



3. Install the new remanufactured transmission. To ensure proper shift quality, update the TCM and PCM as necessary, then do the PCM idle learn, teach-in (Hydraulic Pressure Characteristic Calibration), and adaptation (see Tech2Tech listed below). Refer to the service information.

**PCM**

Trim	Program IN (or later)	Program P/N (or later)
2016 2WD Base, Technology	J6A060	37805-5J6-A060
2016 2WD AcuraWatch	J6A160	37805-5J6-A160
2016 2WD Advance	J6A460	37805-5J6-A460
2016 AWD Base, Technology	J6A260	37805-5J6-A260
2016 AWD AcuraWatch	J6A360	37805-5J6-A360
2016 AWD Advance w/Auto Stop	J6A960	37805-5J6-A960

**TCM**

Trim	Program IN (or later)	Program P/N (or later)
2016 2WD Base, Technology	NBA570	28101-5NB-A570
2016 2WD AcuraWatch	NBA670	28101-5NB-A670
2016 2WD Advance	NBA770	28101-5NB-A770
2016 AWD Base, Technology	NCA580	28101-5NC-A580
2016 AWD AcuraWatch	NCA680	28101-5NC-A680
2016 AWD Advance w/Auto Stop	NCA780	28101-5NC-A780

- Automatic Transmission Removal and Installation
- [Tech2Tech "Power Up a One-Push Start Vehicle with the i-HDS – With Replaced Components"](#)
- [Tech2Tech "9-Speed Transmission or TCM Replacement Procedure"](#)

4. Give your warranty clerk the digital photos and RO. For the warranty claim to be paid, the **three photos** must be included in the warranty claim. See ATTACHING PHOTOS TO A CLAIM for information about attaching photos to warranty claims.

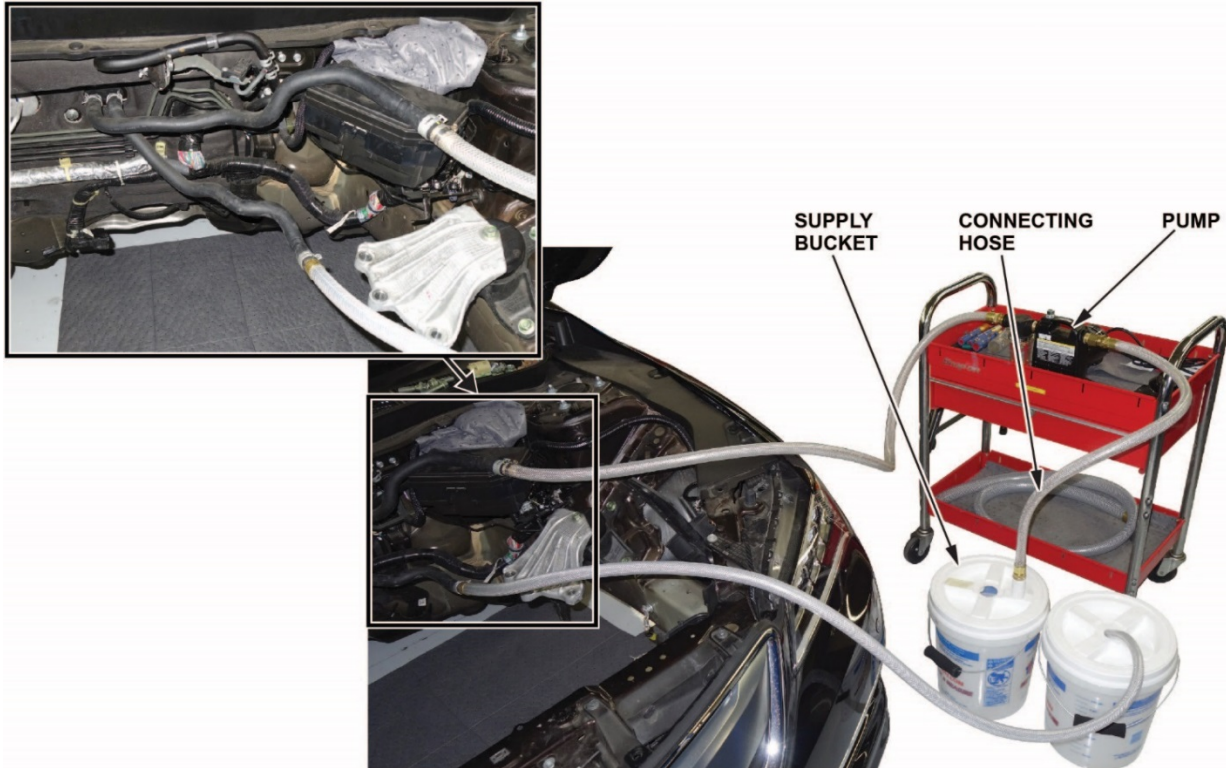
## REPAIR PROCEDURE C

### NOTE:

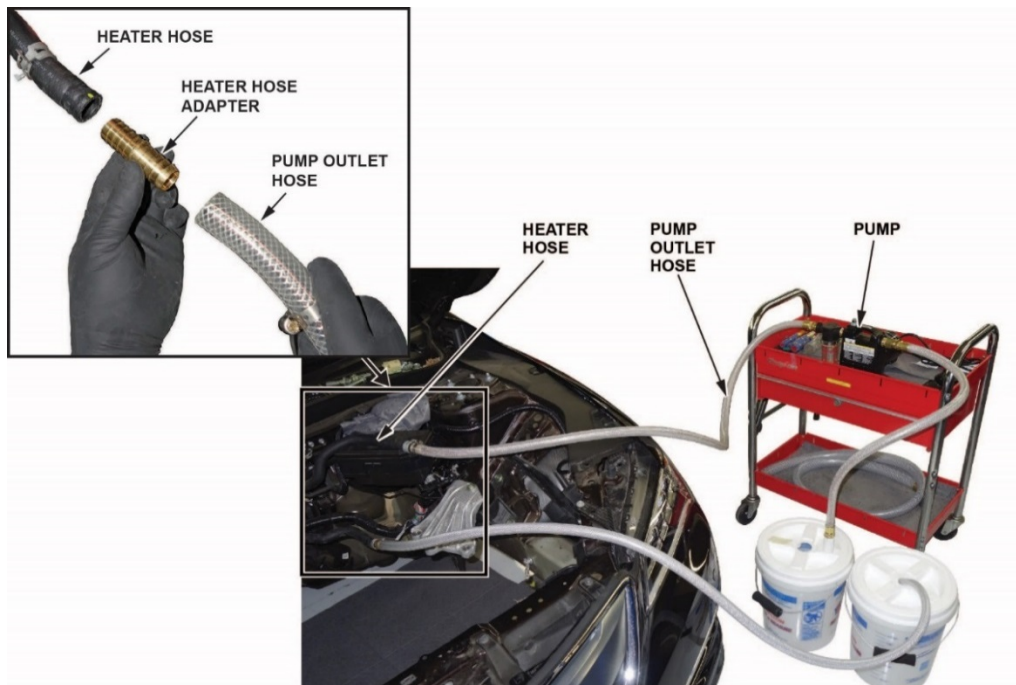
- Use this procedure only if the transmission warmer failed the pressure test and the engine overheated. If the engine did not overheat, go to REPAIR PROCEDURE B.
  - Fill in the heater core part of the flush work sheet (see page 39), and attach it to the RO.
1. Remove the engine and transmission assembly. Refer to the service information.

### Heater Core Flush Procedure

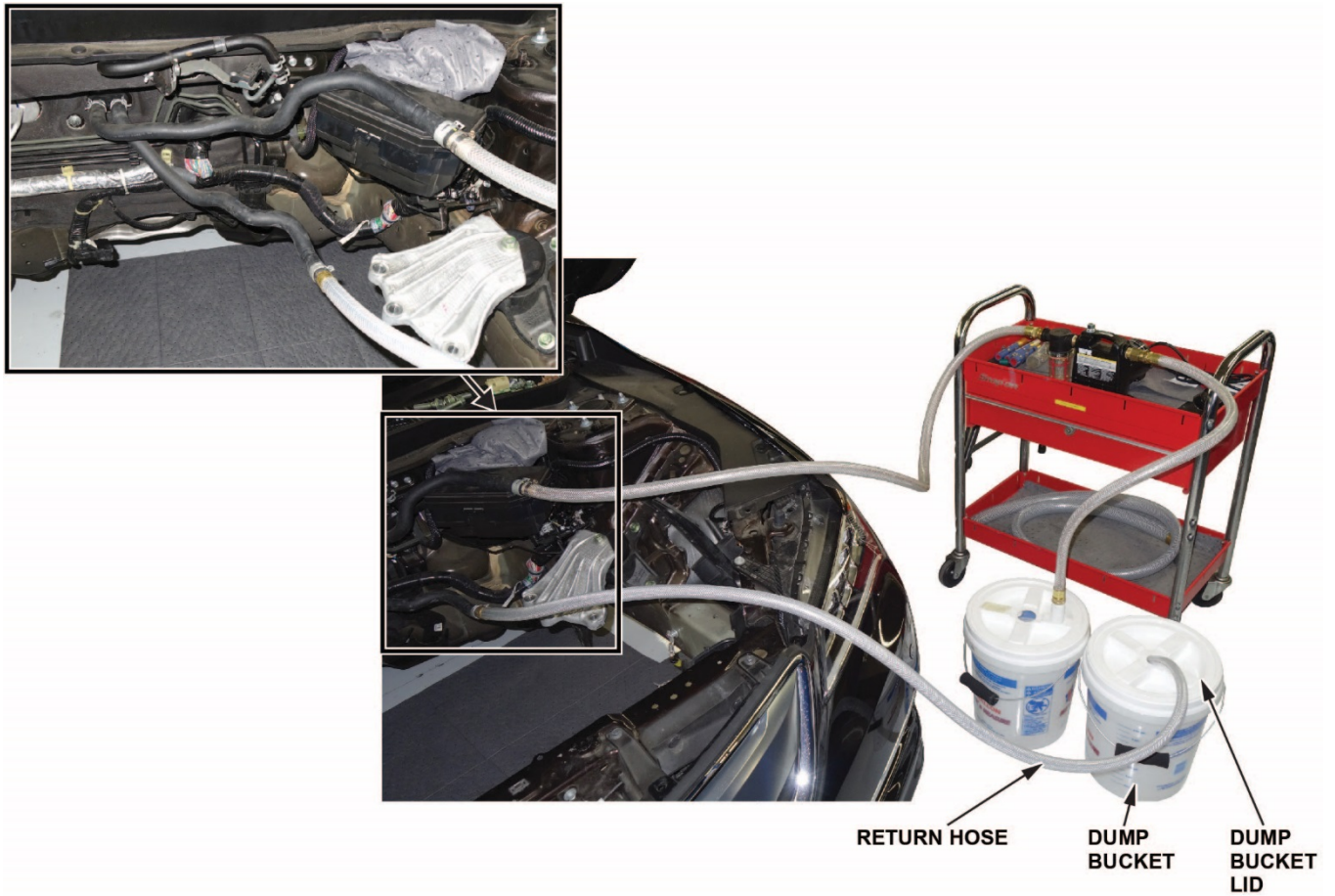
2. Connect the pump to the SUPPLY bucket.



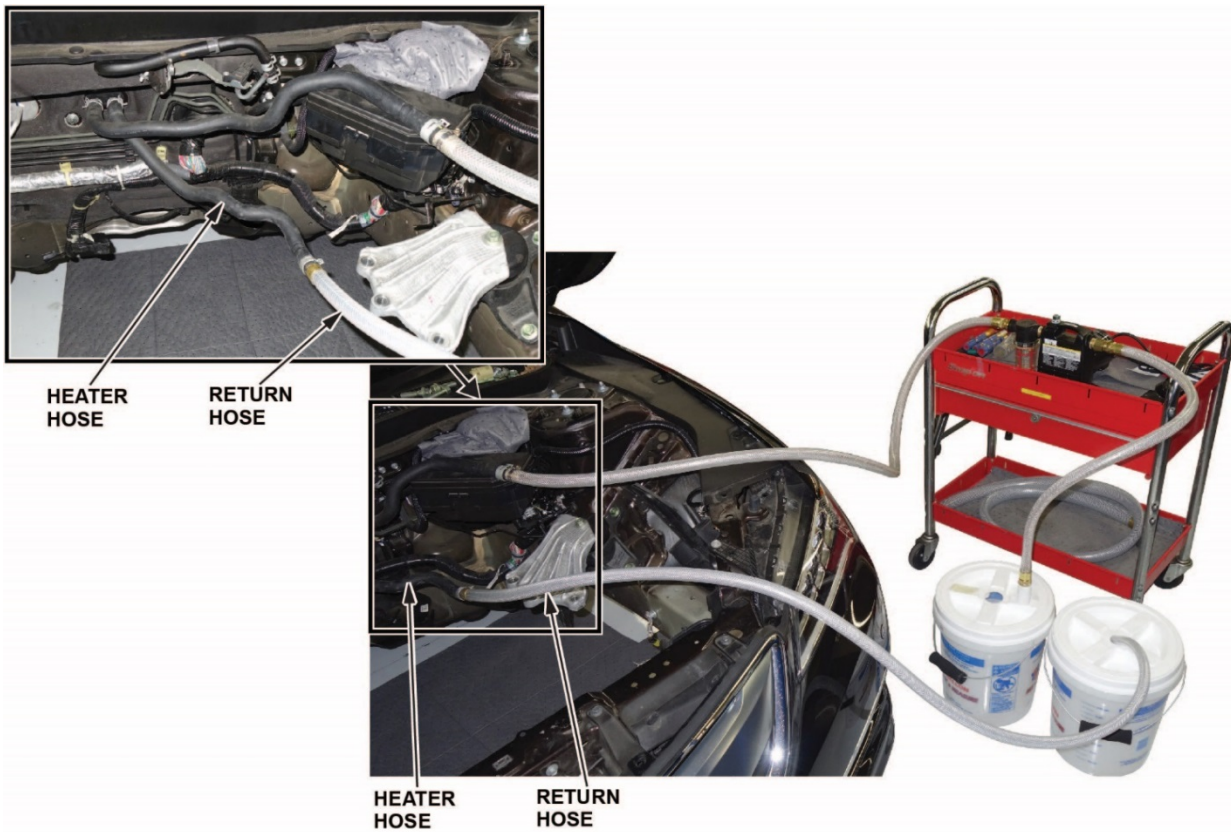
3. Make sure the 0.75 in. heater hose adaptor is installed on the pump outlet hose, then connect the pump outlet hose to the heater hose as shown.



4. Install the return hose through the DUMP bucket lid, then install the lid on the bucket.



5. Attach the return hose to the heater hose as shown.



6. Fill the SUPPLY bucket with water, and run the pump until the SUPPLY bucket is empty.



**SUPPLY BUCKET**  
Fill with water and run the pump until bucket is empty.

**DUMP BUCKET**  
Empty into waste coolant container.

FLUSH 4 TIMES TOTAL.

NOTE: If this is the first time using the pump, remove the priming plug, and fill the pump with clean water, then reinstall the plug.



PRIMING PLUG

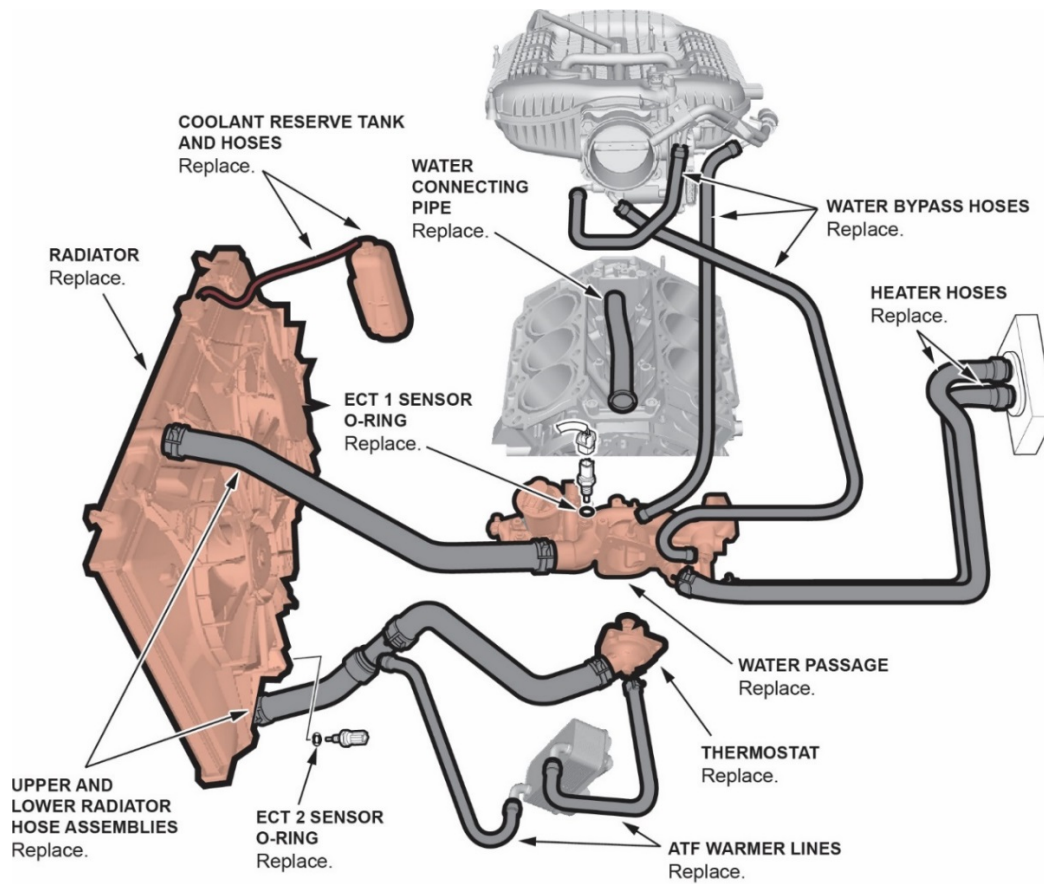


CLEAN WATER

7. Empty the DUMP bucket into the waste coolant container.
8. Repeat the flush 3 more times.
9. Remove the pump and return hose from the vehicle.

## Reassemble Vehicle

10. Replace the radiator, the 10 indicated coolant hoses, the thermostat, the water passage and water connecting pipe, the coolant reserve tank, the 2 ECT sensor (1 and 2) O-Rings, and the coolant reserve tank and hoses. Refer to the image for the location of all the components.



11. Install a new short block, the water connecting pipe, the water passage, new cylinder heads, and a new remanufactured transmission. To ensure proper shift quality, update the TCM and PCM as necessary, then do the PCM idle learn, teach-in (Hydraulic Pressure Characteristic Calibration), adaptation (see Tech2Tech listed below), and CKP-pattern learn. Refer to service information.

**PCM**

Trim	Program IN (or later)	Program P/N (or later)
2016 2WD Base, Technology	J6A060	37805-5J6-A060
2016 2WD AcuraWatch	J6A160	37805-5J6-A160
2016 2WD Advance	J6A460	37805-5J6-A460
2016 AWD Base, Technology	J6A260	37805-5J6-A260
2016 AWD AcuraWatch	J6A360	37805-5J6-A360

**TCM**

Trim	Program IN (or later)	Program P/N (or later)
2016 2WD Base, Technology	NBA570	28101-5NB-A570
2016 2WD AcuraWatch	NBA670	28101-5NB-A670
2016 2WD Advance	NBA770	28101-5NB-A770
2016 AWD Base, Technology	NCA580	28101-5NC-A580
2016 AWD AcuraWatch	NCA680	28101-5NC-A680
2016 AWD Advance w/Auto Stop	NCA780	28101-5NC-A780

- Automatic Transmission Removal and Installation
- [Tech2Tech "Power Up a One-Push Start Vehicle with the i-HDS – With Replaced Components"](#)
- [Tech2Tech "9-Speed Transmission or TCM Replacement Procedure"](#)

12. Give your warranty clerk the digital photos and RO. For the warranty claim to be paid, the **three photos** must be included in the warranty claim. See ATTACHING PHOTOS TO A CLAIM for information about attaching photos to warranty claims.

END

VIN \_\_\_\_\_

RO \_\_\_\_\_

# Flush Work Sheet

(Check each box when completed.)  
(Attach to the RO.)

## ENGINE FLUSH

Prime pump.

Fill SUPPLY bucket with 4.5 gallons of plain water. Flush 5 times, wiping the bucket out between each flush.

1. Flush with plain water 10 min \_\_\_\_
2. Flush with plain water 10 min \_\_\_\_
3. Flush with plain water 10 min \_\_\_\_
4. Flush with plain water 10 min \_\_\_\_
5. Flush with plain water 10 min \_\_\_\_

**Add 4.5 gallons coolant for the final 2 flushes.**

1. Flush with coolant 10 min \_\_\_\_
2. Flush with coolant 10 min \_\_\_\_

## HEATER CORE FLUSH

Attach flush hoses to heater core. Fill supply bucket with 4.5 gallons of plain water and flush 4 times.

1. Flush with plain water \_\_\_\_
2. Flush with plain water \_\_\_\_
3. Flush with plain water \_\_\_\_
4. Flush with plain water \_\_\_\_
5. Disconnect flush hoses \_\_\_\_
6. Remove thermostat \_\_\_\_ plug \_\_\_\_

END

## ATTACHING PHOTOS TO A CLAIM

Go to the **Photo Attachments** area of the claim form to upload images as shown below.

1. To attach photos to the claim, click on **Upload Images**.

Sublet Information				
Sublet Code	Invoice No.	Work Description	Sublet Amount	Rental Days
PH	1234567899	ENGINE BLOCK	500.00	
<< SELECT >>				
<b>Upload Images</b>		Photo Attachments	<a href="#">View Images</a>	

The **Claim Photo Attachment** screen appears.

• = Required

### Claim Photo Attachment

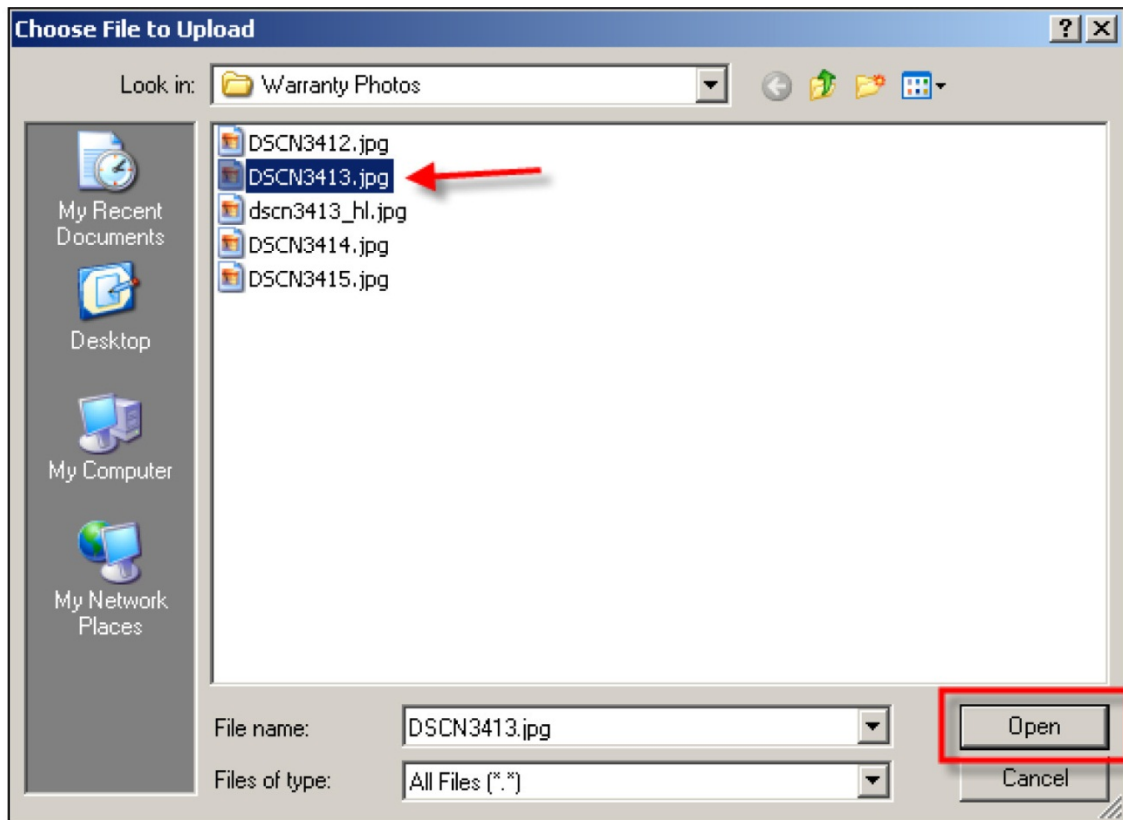
[Close](#)

Uploaded Images 0 (Maximum 5)

Fit To Window  Full Size

**Browse...**

2. Click on **Browse**. The **Choose File to Upload** window appears.

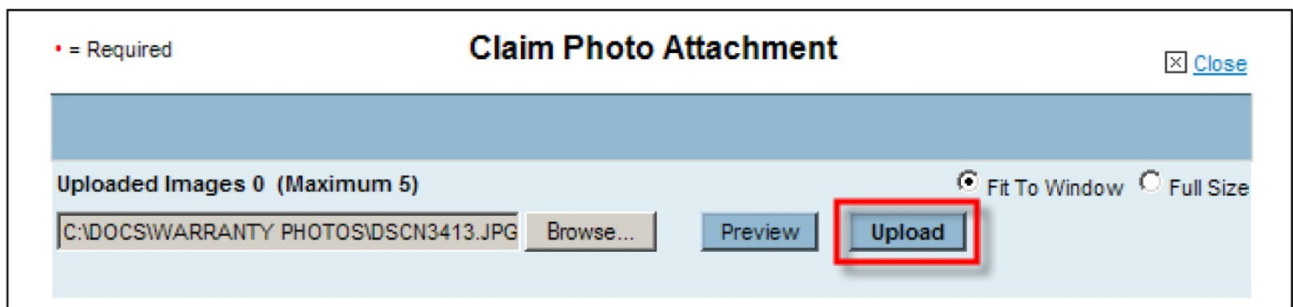


3. Click on an image file to be uploaded.
4. Click on **Open** to select the file.

5. Click on **Preview** if you would like to view the image before uploading. The preview image appears. **Fit To Window** is selected by default as the size at which the preview image is displayed. Click on **Full Size** if you want to enlarge the image, and use the scrollbars to view different areas of the enlarged image.



6. Click on **Upload** to attach the image to the warranty claim. The **Uploaded Images** count increases each time you upload a photo.



7. Click on **Browse** again and follow the same steps to continue attaching images to the claim. To properly document each warranty repair claim, at least 3 photos must be attached.

- When finished attaching photos, click on **Close**.

The file names of your attached photos now appear in the **Photo Attachments** area of the claim form, as shown below.

Sublet Information				
Sublet Code	Invoice No.	Work Description	Sublet Amount	Rental Days
PH	1234567899	ENGINE BLOCK	500.00	
<< SELECT >>				
Upload Images		Photo Attachments		View Images
dscn3413_hl.jpg	DSCN3412.jpg	DSCN3414.jpg	DSCN3415.jpg	


### VIEWING AND DELETING PHOTO ATTACHMENTS

After uploading photo attachments, you can view the photos by clicking on **View Images** in the **Photo Attachments** area. The **Claim Photo Attachment** screen displays thumbnails of all photos attached to the claim.


Sublet Information				
Sublet Code	Invoice No.	Work Description	Sublet Amount	Rental Days
PH	1234567899	ENGINE BLOCK	500.00	
<< SELECT >>				
Upload Images		Photo Attachments		View Images
dscn3413_hl.jpg	DSCN3412.jpg	DSCN3414.jpg	DSCN3415.jpg	

**Claim Photo Attachment** Close


Images Uploaded: 4 Fit To Window Full Size

[Delete](#) 


dscn3413\_hl.jpg

[Delete](#) 


DSCN3412.jpg

[Delete](#) 

DSCN3414.jpg

[Delete](#) 

DSCN3415.jpg



Click on a thumbnail to view the photo attachment as shown above. To delete a photo attachment, simply click on **Delete** to the left of its thumbnail.



When your claim and photos are completely ready, click on **Submit** to send the claim to the American Honda Warranty department.

#### **WARRANTY CLAIM PHOTO ATTACHMENT INQUIRY**

After submitting a warranty claim, you can view its photo attachments at any time as follows:

1. Click on **Service > Warranty > Warranty Claim Photo Attachment Inquiry**.
2. Enter any of the following: **Claim Number, VIN, Repair Order Number, or Repair Order Date**.
3. Click on **submit**. Thumbnails of all photos attached to the claim appear, as shown below.
4. Click on any thumbnail to view the photo attachment.

NOTE:

- Photo attachments are archived on the iN for 2 years.

- Whenever you open a saved warranty claim and attach or delete photos, you must either **save** or **submit** the claim to retain your photo attachment changes.

Signed in as: JOE ADMIN | Edit Profile | Emulation | Sign Out

MY FAVORITES | HOME | SITE MAP | IN SUPPORT | CONTACT US | ALERTS

HONDA | ONLINE UNIVERSITY

Hide This Menu

Acknowledgements

Transactions

Warranty Claim

Warranty Claim Photo Attachment Inquiry

Transportation Claim

Claim Status by Claim No

Claim Status by VIN

Unpaid Claim Deletion

Powertrain & Emissions Inquiry

Demonstrator Warranty Application Claim

R.O. Interface

Reports

Required

### Warranty Claim Photo Attachment Inquiry

The Sales Portal | Help | Print

Search Parameters

Claim Number: 123456

VIN: [ ]

Repair Order Number: [ ]

Repair Order Date: [ ]

Submit

Claim Number	VIN	Repair Order Number	Repair Order Date
123456	1HGCS12858A011616	441446	01/31/2008

Claim #: 123456 | VIN: 1HGCS12858A011616 | RO#: 441446 | RD Date: 01/31/2008

Fit To Window | Full Size

dscn3413\_h.jpg

DSCN3412.jpg

DSCN3414.jpg

DSCN3415.jpg

DANA

75-51572

00031624

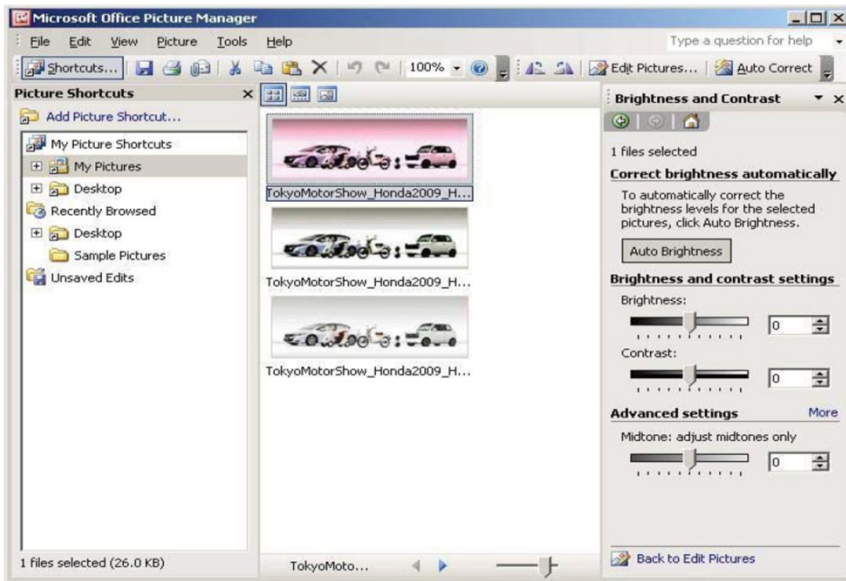
0501331275

2015-07-27 52083878

Made in Canada | Fabrique en Canada

## CORRECTING PHOTO PROBLEMS USING PICTURE MANAGER

Microsoft Office Picture Manager is a very useful tool to help improve the quality of photos submitted for warranty consideration.



While the Picture Manager program cannot correct blurry, out-of-focus pictures, it can adjust pictures for brightness, contrast, and color, helping to reveal details. It can also crop or resize digital photo files so that they can be submitted for warranty claim consideration.

- To use this program on your PC, click on **Start > Programs > Microsoft Office > Microsoft Office Tools > Microsoft Office Picture Manager**.
- If the above instruction does not lead you to the Picture Manager program, click on **Start > Search**. Under **Search for Folders or Files**, enter **Picture Manager** in the Search window, then click on **Search Now**.
- To create a shortcut to open Microsoft Picture Manager from your desktop, go to **Start > Programs > Microsoft Office > Microsoft Office Tools > Microsoft Picture Manager >**, then right-click and choose **Create Shortcut**. The shortcut icon and title will appear below the original Microsoft Picture Manager icon and title. Left-click and hold on the shortcut icon and drag it to the desktop. Once there, if you wish to change its name, right-click on the icon and select **Rename**.
- To open and edit photos directly from Microsoft Picture Manager, right-click on any JPEG picture file, then move your cursor to **Open with**.

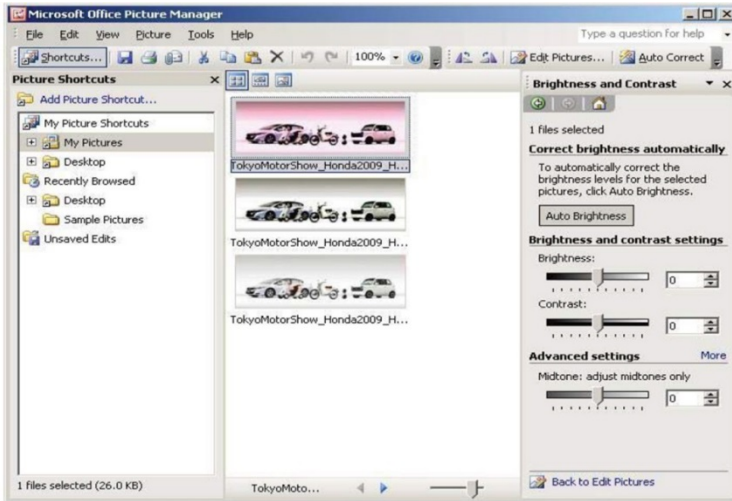
Another window will open listing Microsoft Office Picture Manager and other programs. **Do not** click on **Picture Manager**, but instead scroll down the list, then click on **Choose Program**.

Another window will open, with Picture Manager already selected. Check the open box next to **Always use the selected program to open this kind of file**; this will make Picture Manager your default picture management program.

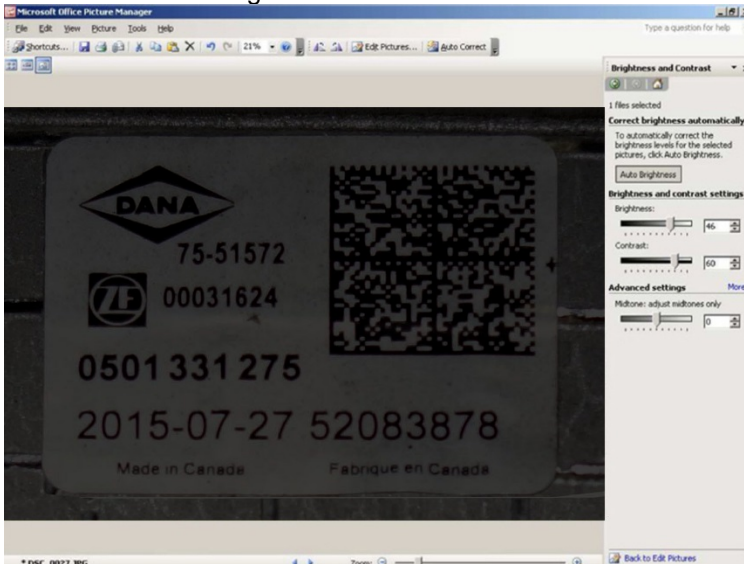
NOTE: The next time you click on a JPEG photo, it will automatically open in the Picture Manager program.

## Correction Example #1: Photo is Too Dark

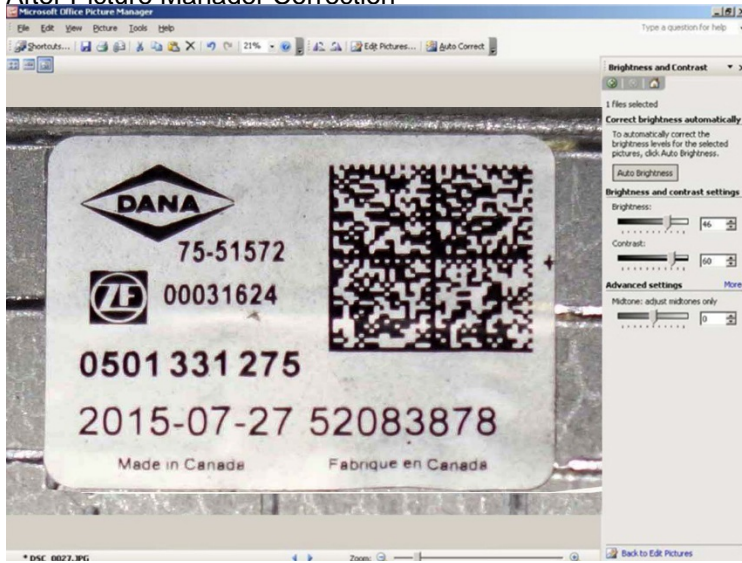
In Picture Manager, select **Edit/Edit Pictures > Edit Using These Tools/Brightness and Contrast**. Use the sliding scales to adjust the photo to the brightness and contrast that best reveal the fault.



## Before Picture Manager Correction



# After Picture Manager Correction

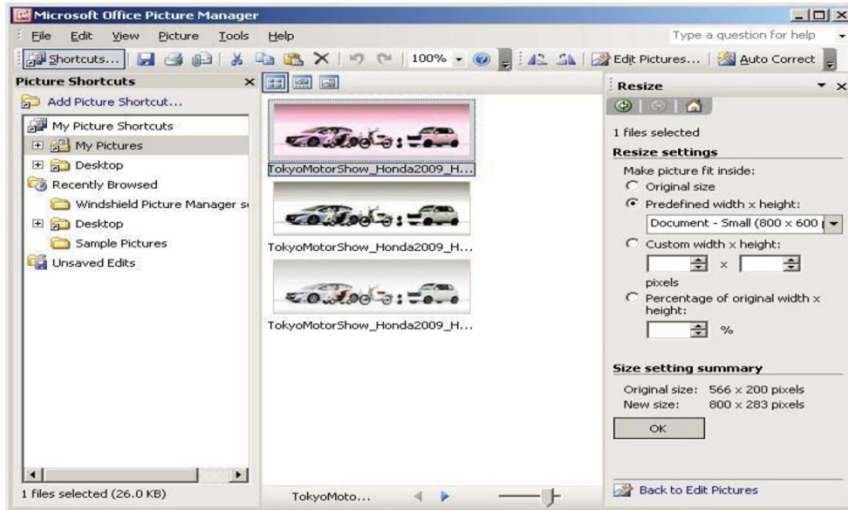


## Correction Example #2: Photo Size is Too Large

For maximum clarity, **the file size for each photo must be between 500 kB and 10,000 kB (10 mB)**. ZIP-compressed files are not acceptable. Photo file sizes over 10,000 kB (10 mB) cannot be accepted by the American Honda Warranty department.

To reduce a picture's file size, open Picture Manager. Click on the photo to be reduced, then click on **Edit Pictures > Resize > Percentage of original width x height**, then click on the down arrow to reduce its percentage (%) size. View the pixel count change in **Size Setting Summary**, which displays the photo's **Original size** and its **New size**.

NOTE: The % function changes the pixels per inch, so a photo's size should be reduced only enough to meet the maximum file size requirement. For example, a 10% reduction in pixels per inch will reduce a photo's size and its resolution by almost 50%.



END