

**HYUNDAI**NEW THINKING.
NEW POSSIBILITIES.**Technical Service Bulletin**

GROUP	NUMBER
CAMPAIGN	17-01-001
DATE	MODEL(S)
JANUARY 2017	ELANTRA (AD)

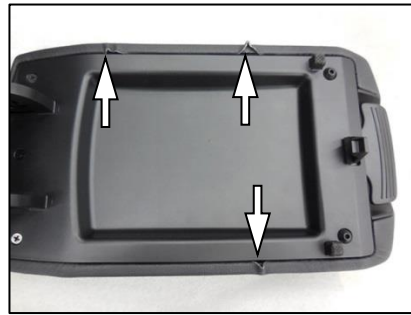
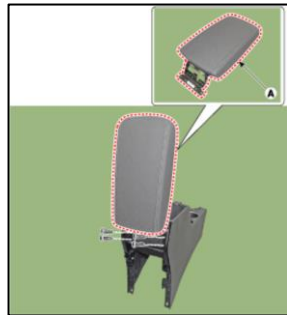
SUBJECT: 2017 ELANTRA (AD) CONSOLE ARMREST COVER INSPECTION AND REPLACEMENT (SERVICE CAMPAIGN T1P)

★ IMPORTANT***** Dealer Stock and Retail Vehicles *****

Dealers must perform this Service Campaign on all affected vehicles prior to customer retail delivery and whenever an affected vehicle is in the shop for any maintenance or repair.

When a vehicle arrives at the Service Department, access Hyundai Motor America's "Warranty Vehicle Information" screen via WEBDCS to identify open Campaigns.

Description: This bulletin describes the procedure to inspect and replace the floor console armrest if the cover material is found to be peeling. This peeling condition was caused during the cover material cutting process.



Applicable Vehicles: Certain 2017 Elantra (AD)

Parts Information:

Part Name	Before	After	Qty.
Console Armrest Assembly (Beige)	84660-F2000 XUG	84660-F2000 XUGQH	1
Console Armrest Assembly (Gray)	84660-F2000 PKG	84660-F2000 PKGQH	1

Warranty Information:

Model	Op. Code	Operation	Op. Time	Causal Part	Nature	Cause
AD (Elantra)	60C074R2	Console Armrest Inspection	0.2 M/H	84660 F2000 XUG	A34	ZZ7
AD (Elantra)	60C074R3	Console Armrest Inspection and Replacement	0.3 M/H			

Circulate To: General Manager, Service Manager, Parts Manager, Warranty Manager, Service Advisors, Technicians, Body Shop Manager, Fleet Repair

NOTE 1: Submit Claim on Campaign Claim Entry Screen

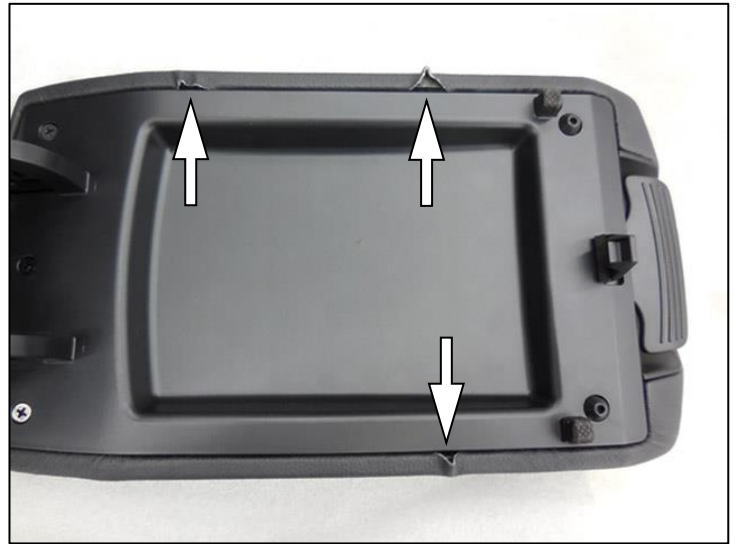
NOTE 2: If a part is found in need of replacement while performing Service Campaign T1P and the affected part is still under warranty, submit a separate claim using the same Repair Order. If the affected part is out of warranty, submit a Prior Approval Request for goodwill consideration prior to performing the work.

Service Procedure:

1. Open the floor console armrest cover. Visually inspect the underside for material peeling as shown.

Note: The arrows point to examples of a defective cover material.

- 1) If the cover material is found to be OK (material is tightly attached to the housing), no further service procedure is required. **Use Labor Op Code: 60C074R2.**
- 2) If the cover material is found to be peeling similar to shown in the picture, replace the console armrest with a new one according to the procedure below.



2. Slide the two front seats forward and lean the seatbacks forward to increase working space.

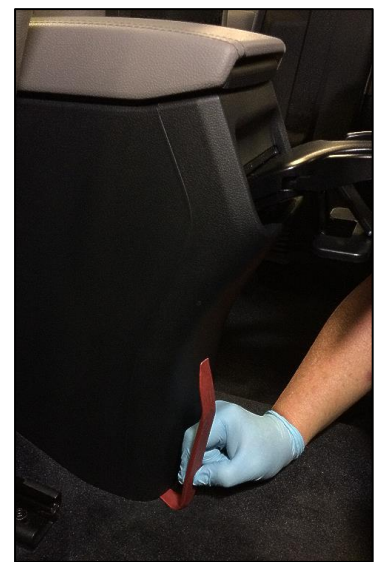


3. Pull the cupholder to the open position.



4. Use the trim removal tool shown (or similar with a 90 degree bend).

Insert the edge of the trim tool between the carpet and bottom left side of the console rear cover.

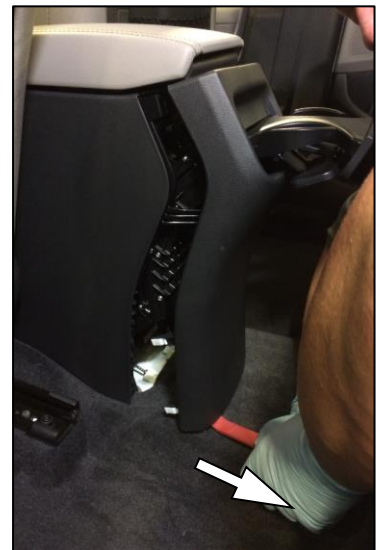
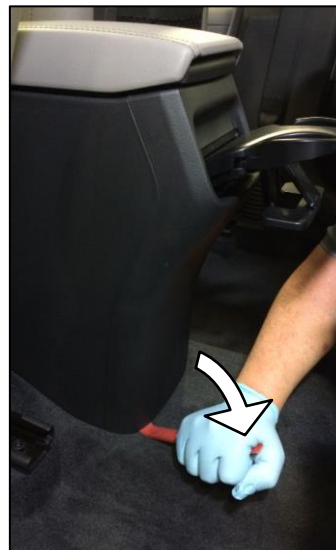


5. Rotate the trim tool down to engage the tool on the inside surface of the cover.

Pull the tool straight back to disengage the clips of the rear cover.

NOTICE

Take care to avoid scratching or damaging the rear cover and other parts.

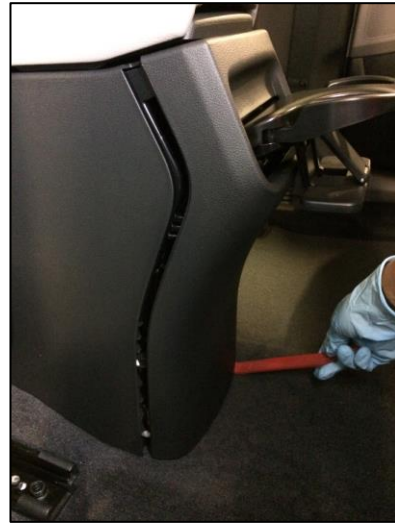


6. Move the trim removal tool to the bottom right side of the console rear cover.

Pull the tool straight back to disengage the remaining clips of the rear cover.

NOTICE

Take care to avoid scratching or damaging the rear cover and other parts.



7. Remove the rear cover from the floor console.

Lift up on the cupholder bottom to feed it through the cupholder opening. Return the cupholder to the closed position.

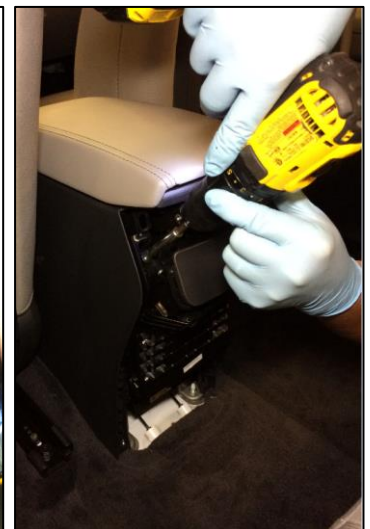
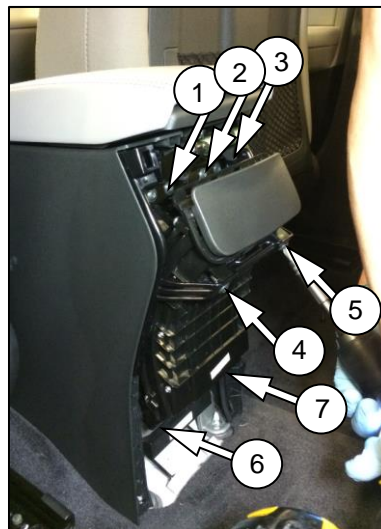


8. Remove the seven (7) screws for the cupholder assembly.

NOTICE

Use an extension bit to reach the top three (3) screws.

Slide the cupholder assembly out.

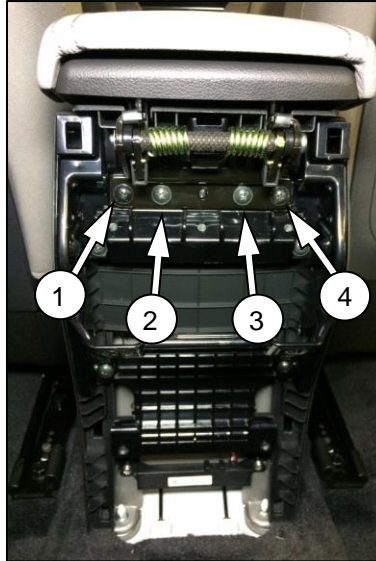


9. Remove the four (4) screws for the armrest cover.

CAUTION

Before removing the last screw, lift the cover up and hold it with one hand so that the spring does not snap the bracket toward you.

Note: Set aside the removed armrest that exhibits the peeling cover condition for possible warranty return.



10. Confirm that the replacement armrest cover:

1. Matches the cover color of the original (beige or gray).
2. Has cover material that is tightly attached to the housing.

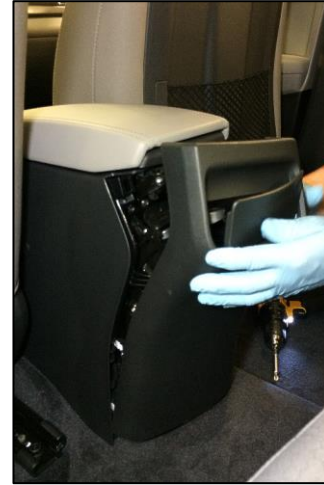


11. Install the new armrest cover and cupholder in reverse order of removal.

12. Reinstall the rear cover on to the floor console.

NOTICE

Open the cupholder and lift up on the cupholder bottom to feed it through the cupholder opening.



13. Align the six (6) clips on the rear cover with their mating points on the floor console.

Carefully push forward on the rear cover to snap the clips into place.

NOTICE

Take care to avoid breaking the clips.

Take care to avoid scratching or damaging the rear cover and other parts.

Confirm there are no gaps between the rear cover and the floor console. Close the cupholder.



14. Verify the installation:
1. Open and close the armrest cover.
 2. Open and close the cup holder.

Service Procedure is complete. Use Labor Op Code: 60C074R3.

