

- ATTENTION:**
- GENERAL MANAGER
 - PARTS MANAGER
 - CLAIMS PERSONNEL
 - SERVICE MANAGER

IMPORTANT - All Service Personnel Should Read and Initial in the boxes provided, right.

© 2016 Subaru of America, Inc. All rights reserved.



QUALITY DRIVEN® SERVICE

SERVICE INFORMATION

APPLICABILITY: 2014-16MY Forester

NUMBER: 07-108-16R

SUBJECT: Diagnostic TIPS for ODS DTC B1760 and air/or Airbag DTC B1650

DATE: 04/18/16

REVISED: 06/26/17

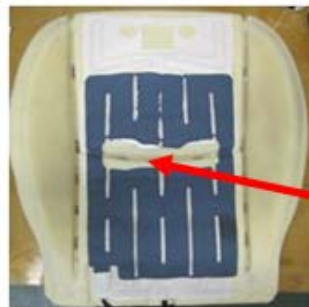
INTRODUCTION:

This Service Information bulletin provides a procedure for diagnosis of Occupant Detection System (ODS) DTC B1760- Sensor Mat Abnormal and/or B1650- Occupant Classification System Malfunction. This information replaces the current procedure until the Service Manual is updated in the near future. DTC B1760 and/or B1650 may set if liquid inadvertently spilled onto the seat cushion (or rain water entering from a window left open) penetrates the upholstery and reaches the sensor mat. These DTCs can also set under high humidity conditions.

SERVICE PROCEDURE / INFORMATION:

IMPORTANT: Whenever B1650 is stored in the Airbag system, ALWAYS check for stored codes in the Occupant Classification System (a.k.a ODS).

Inspect the seat cushion / frame assembly for evidence of moisture as shown in the example photos below then use the flow chart provided on pg. 2 to continue diagnosis.



Continued...

CAUTION: VEHICLE SERVICING PERFORMED BY UNTRAINED PERSONS COULD RESULT IN SERIOUS INJURY TO THOSE PERSONS OR TO OTHERS.

Subaru Service Bulletins are intended for use by professional technicians ONLY. They are written to inform those technicians of conditions that may occur in some vehicles, or to provide information that could assist in the proper servicing of the vehicle. Properly trained technicians have the equipment, tools, safety instructions, and know-how to do the job correctly and safely. If a condition is described, DO NOT assume that this Service Bulletin applies to your vehicle, or that your vehicle will have that condition.

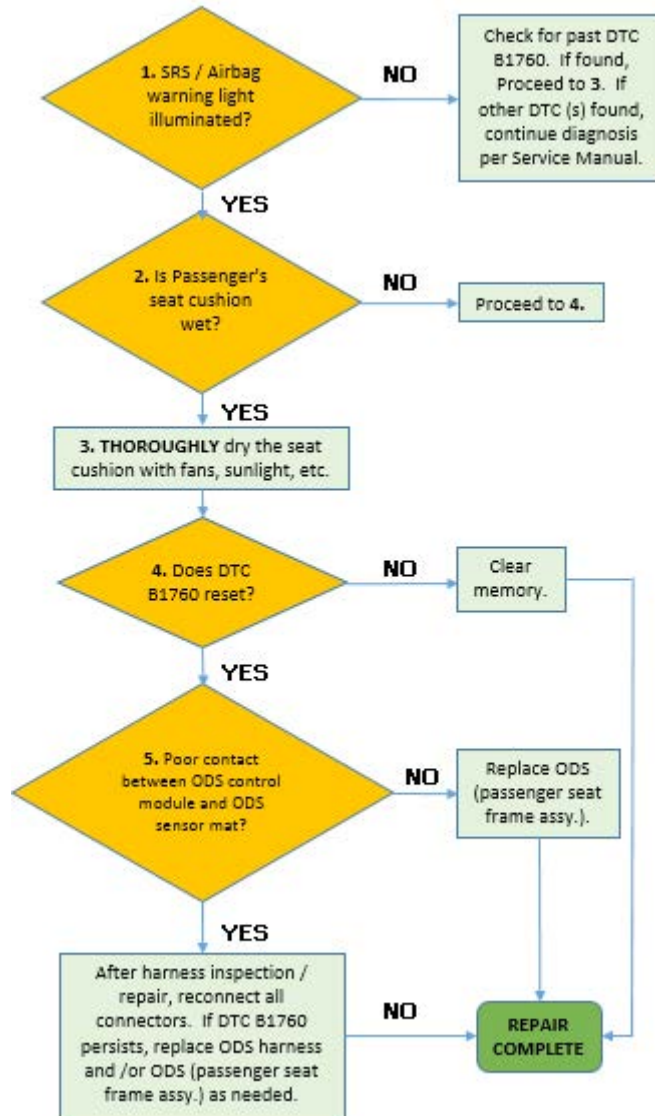
SUBARU OF AMERICA, INC. IS ISO 14001 COMPLIANT

ISO 14001 is the international standard for excellence in Environmental Management Systems. Please recycle or dispose of automotive products in a manner that is friendly to our environment and in accordance with all local, state and federal laws and regulations.

Evidence of rust seen on the seat frame



B1760 FLOW CHART



IMPORTANT REMINDERS:

- SOA strongly discourages the printing and/or local storage of service information as previously released information and electronic publications may be updated at any time.
- Always check for any open recalls or campaigns anytime a vehicle is in for servicing.
- Always refer to STIS for the latest service information before performing any repairs.