



SERVICE BULLETIN

Classification: HA15-001e	Reference: NTB15-045e	Date: August 4, 2017
-------------------------------------	---------------------------------	--------------------------------

2014-2017 ROGUE; MANUAL HVAC IMPROPER OPERATION

This bulletin has been amended. Changes have been made on pages 1 and 2.
No other changes have been made. Please discard all previous versions.

APPLIED VEHICLES: 2014-2017 Rogue (T32) - Equipped with Manual HVAC system
APPLIED VIN & DATE: 2014-2015: All
2016 beginning with "KNM": ALL
2016 beginning with "5N1":
Built before 5N1AT2M(**)GC 877504 // July 11, 2016
2016-2017 beginning with "JN8": Bulletin does not apply
2017 beginning with "KNM":
Built before KNMAT2M(**)HP 505819 // October 5, 2016
2017 beginning with "5N1": Bulletin does not apply

NOTE: This bulletin does not apply to the Rogue Select (S35)

IF YOU CONFIRM

There are no HVAC DTCs stored,
and

One of the following conditions:

- Air temperature from the HVAC vents does not match the temperature setting (warm air is discharged when cold is selected, or vice versa).
- or**
- Air is discharged from the incorrect location. For example, vent is selected but 100% of air is discharged to the foot or defrost.

and

The Front Air Control Unit part number is 27500-4BB0A, 27500-4BB0B, 27500-4BB0C, or 27500-4BB0D.

- See Figures A and B on page 2 for location of Front Air Control Unit part number.

NOTE: If HVAC DTC(s) are stored, or if the Front Air Control Unit part number is different from what is listed above, this bulletin does not apply.

IMPORTANT: The purpose of **ACTION** (page 2) is to give you a quick idea of the work you will be performing. You **MUST** closely follow the entire **SERVICE PROCEDURE** as it contains information that is essential to successfully completing this repair.

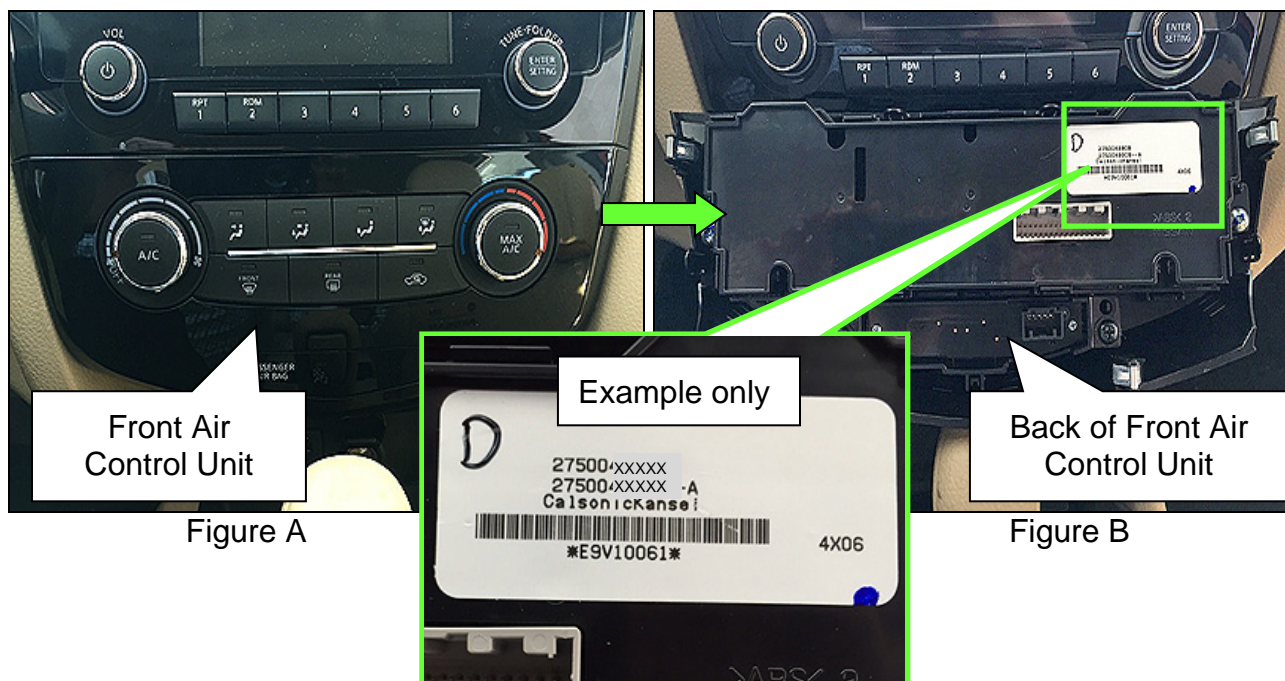
Nissan Bulletins are intended for use by qualified technicians, not 'do-it-yourselfers'. Qualified technicians are properly trained individuals who have the equipment, tools, safety instruction, and know-how to do a job properly and safely. NOTE: If you believe that a described condition may apply to a particular vehicle, DO NOT assume that it does. See your Nissan dealer to determine if this applies to your vehicle.

ACTION

1. Replace the Front Air Control Unit with the one listed in Parts Information.
2. Use CONSULT-III plus (C-III plus) to reset the door motor starting position.

Front Air Control Unit Part Number

Replace the Front Air Control Unit only if the part number is 27500-4BB0A, 27500-4BB0B, 27500-4BB0C, or 27500-4BB0D.



SERVICE PROCEDURE

1. Replace the Front Air Control Unit with the one listed in Parts Information.
 - Refer to the Electronic Service Manual (ESM), section **HAC – Heater & Air Conditioning Control System** for removal and installation information.

Door Motor Starting Position Reset

2. Connect the CONSULT PC to the vehicle with the plus VI.

3. Start C-III plus.

4. Start the engine.

- **Keep the engine running during this procedure.**

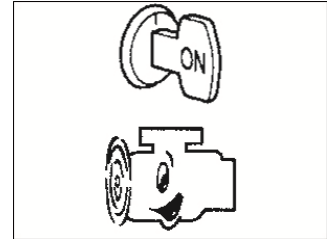


Figure 1

5. Navigate C-III plus to HVAC > Work Support.

6. Select **Door Motor Starting Position Reset**.

7. Select **Start**.

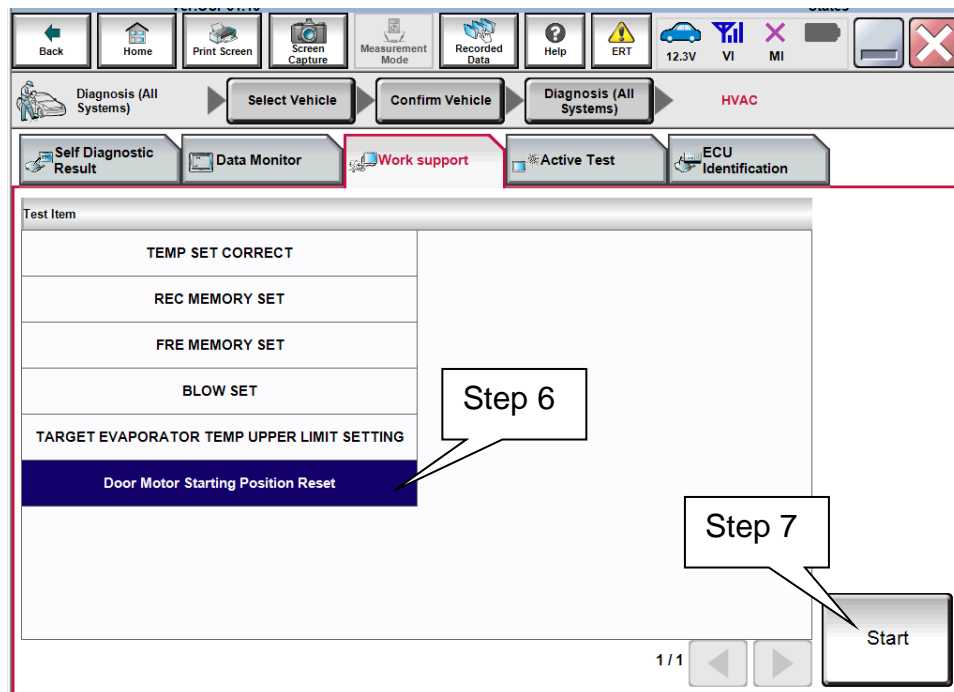


Figure 2

8. Select **Start** to start the Door Motor Starting Position Reset.

- Keep the ignition ON and the engine running.

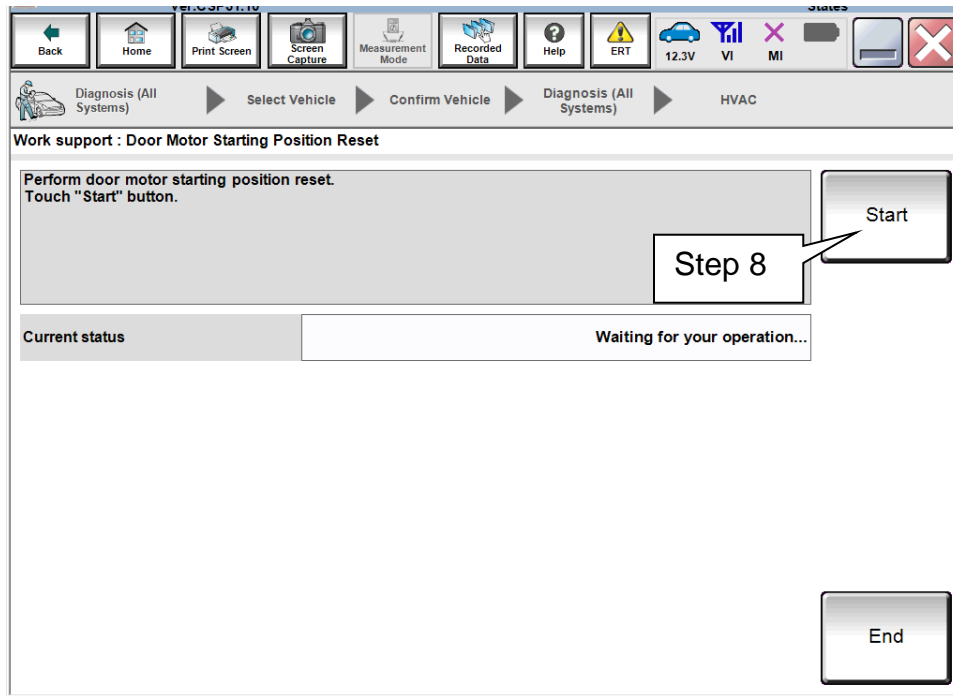


Figure 3

9. Wait for the Door Motor Starting Position Reset to complete (about 30 seconds).

10. Select **End**.

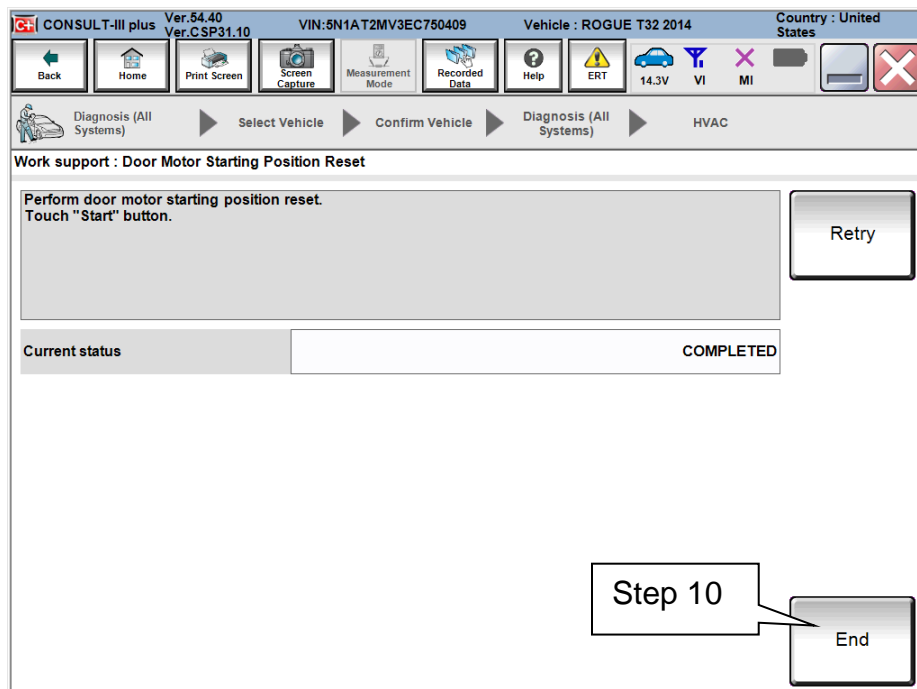


Figure 4

11. Confirm the HVAC controls now operate correctly.

- With the A/C ON, confirm outlet air temperature matches temperature setting at mid-point, full warm, and full cold.
- Confirm outlet air is discharged from the selected position: Vent, Floor, Defrost, and Bi-level.

12. Turn the ignition OFF.

13. Disconnect C-III plus from the vehicle.

14. Re-start the engine.

15. Again, confirm the HVAC controls operate correctly.

- With the A/C ON, confirm outlet air temperature matches temperature setting at mid-point, full warm, and full cold.
- Confirm outlet air is discharged from the selected position: Vent, Floor, Defrost, and Bi-level.

16. Turn the ignition OFF.

END

PARTS INFORMATION

DESCRIPTION	PART #	QUANTITY
CONTROLLER ASSY- AIR CONDITIONER (Front Air Control Unit)	27500-4BB0E	1

CLAIMS INFORMATION

Submit a Primary Part (PP) type line claim using the following claims coding:

DESCRIPTION	PFP	OP CODE	SYM	DIA	FRT
Replace Controller Assy – Air Conditioner	(1)	TC10AA	ZE	32	(2)
Perform HVAC Door Motor Starting Position Reset		TX43AA			0.2

(1) Refer to the electronic parts catalog (FAST or equivalent) and use the appropriate CONTROLLER ASSY-AIR CONDITIONER part number (27500-*****) as the PFP.

(2) Reference the current Nissan Warranty Flat Rate Manual and use the indicated flat rate time.