



Reliability Driven®

Service Bulletin No. 3101

<small>MODEL</small> J4500	<small>TYPE</small> Service Information	<small>SECTION/GROUP</small> 2-Axle	<small>DATE</small> March 2, 2017
<small>SUBJECT</small> ZF AXLE HUBS AND WHEEL HEADS			
<small>CONDITIONS</small> Service Information Only			

Description:

MCI is notifying customers of ZF Friedrichshafen AG ("ZF") release of the attached Service Information regarding checking axle hubs and wheel heads if an ABS tell-tale lamp is activated during coach operation.

MCI and ZF advise that immediate action is required when the ABS tell-tale lamp actuates during coach operation. If the ABS tell-tale lamp actuates during coach operation, the operator must safely drive the coach to a safe location and inspect all six wheel ends for an overheat condition.

Should an overheat condition exist in a hub or wheel head, or oil / grease is present on the wheel, the coach must not be driven or towed until inspected by a qualified technician.

The coach must be transported by a flatbed in this condition.

WARNING

Towing a coach in this condition will result in further component damage.

REFER TO MANUAL

Refer to Section 4 / Brakes, in the MCI J4500 Maintenance Manual, in conjunction with this service information bulletin.

NOTICE

Refer to the attached ZF Service Information letter for further information.



Service Information

Date: 17/01/17

ZF CV
Axle

RL80E & A132
Models

Hub & Wheelhead
Assembly groups

ALL
ZF Services

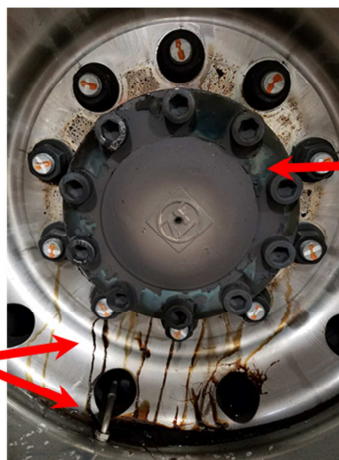
MCI
OEM/Customer

Early warning: ABS dash light active **→ Possible wheel head bearing damage**

Immediate action is required by the vehicle operator if the ABS dash light becomes active during vehicle operation.

1. The operator must find the next safe place to pull off the road to inspect the steer and tag axle hubs and the drive axle wheelheads.
2. Hub and wheelhead inspection includes a visual check and a temperature check
 - a. Look for oil or grease on the wheels coming from the hub or wheelhead
 - b. Carefully check the temperature of the hubs and wheelheads by touching and comparing with the hubs and wheelheads on the other end of the axle.
3. If there is oil/grease present or if the a hub or wheelhead feels hot to the touch as compared to the opposite side, then the vehicle must be taken out of service to be inspected by an authorized service technician.

Example: Drive Axle Wheelhead



Oil or grease on the wheel is an indication of seal or bearing damage and requires the vehicle to be taken out of service.

Check the temperature of the wheelhead, as compared to the other side of the axle. If it is hot to the touch in comparison, then the vehicle requires to be taken out of service.