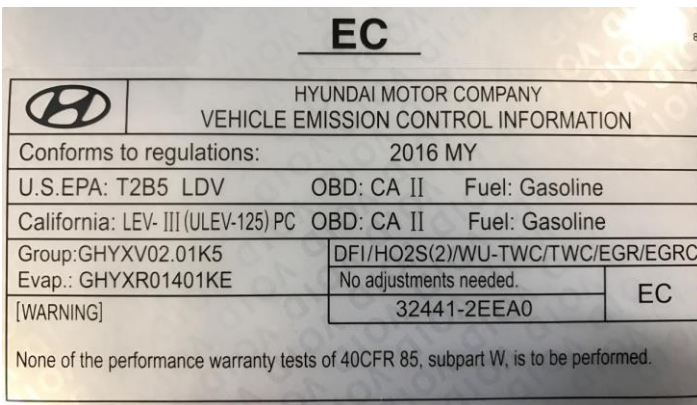
 HYUNDAI Technical Service Bulletin	GROUP CAMPAIGN	NUMBER 17-01-056
	DATE AUGUST, 2017	MODEL(S) SONATA LF HEV/LF PHEV
SUBJECT: SONATA (LF HEV/PHEV) EMISSION LABEL INCORRECT (SERVICE CAMPAIGN 950)		

★ IMPORTANT ***** Dealer Stock and Retail Vehicles *****

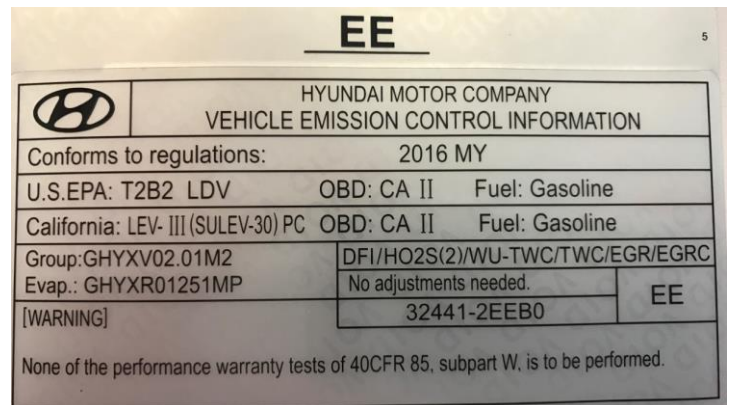
Dealers must perform this Service Campaign on all affected vehicles prior to customer retail delivery and whenever an affected vehicle is in the shop for any maintenance or repair.

When a vehicle arrives at the Service Department, access Hyundai Motor America's "Warranty Vehicle Information" screen via WEBDCS to identify open Campaigns.

Description: This bulletin describes the procedure to replace the vehicle emission control information label (see example below) applicable to the 2016 Sonata Hybrid / 2016 Sonata Plug-in Hybrid models due to an emission label that may have been installed with the incorrect part number. Verify that the subject vehicle has the correct label per the information provided in this TSB and apply the correct label if required.



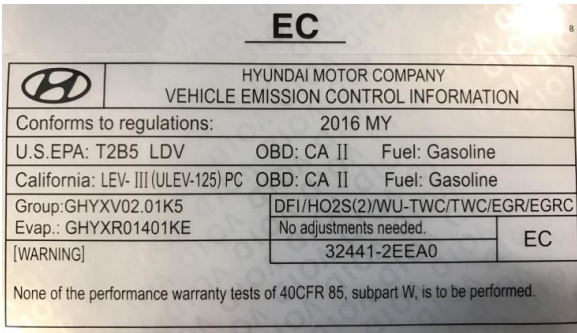
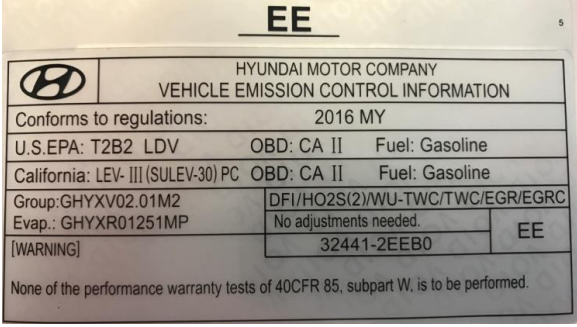
SONATA HYBRID LABEL
32441-2EEA0-CAMP



SONATA PLUG-IN LABEL
32441-2EEB0-CAMP

Applicable Vehicles:
Certain 2016 Sonata Hybrid (LF HEV) and 2016 Sonata Plug-in Hybrid (LF PHEV)

Parts Information:

Part Name	Part #	Description	Qty.
SONATA HYBRID LABEL	32441-2EEA0-CAMP	 <p>EC</p> <p>HYUNDAI MOTOR COMPANY VEHICLE EMISSION CONTROL INFORMATION</p> <p>Conforms to regulations: 2016 MY</p> <p>U.S.EPA: T2B5 LDV OBD: CA II Fuel: Gasoline</p> <p>California: LEV- III (ULEV-125) PC OBD: CA II Fuel: Gasoline</p> <p>Group: GHYXV02.01K5 DFI/HO2S(2)/WU-TWC/TWC/EGR/EGRC</p> <p>Evap.: GHYXR01401KE No adjustments needed. EC</p> <p>[WARNING] 32441-2EEA0</p> <p>None of the performance warranty tests of 40CFR 85, subpart W, is to be performed.</p>	1
SONATA PLUG-IN LABEL	32441-2EEB0-CAMP	 <p>EE</p> <p>HYUNDAI MOTOR COMPANY VEHICLE EMISSION CONTROL INFORMATION</p> <p>Conforms to regulations: 2016 MY</p> <p>U.S.EPA: T2B2 LDV OBD: CA II Fuel: Gasoline</p> <p>California: LEV- III (SULEV-30) PC OBD: CA II Fuel: Gasoline</p> <p>Group: GHYXV02.01M2 DFI/HO2S(2)/WU-TWC/TWC/EGR/EGRC</p> <p>Evap.: GHYXR01251MP No adjustments needed. EE</p> <p>[WARNING] 32441-2EEB0</p> <p>None of the performance warranty tests of 40CFR 85, subpart W, is to be performed.</p>	1

Warranty Information:

Model	Op. Code	Operation	Op. Time	Causal Part #	Nature Code	Cause Code
Sonata Hybrid (LF HEV)	ELABELHE	EMISSION LABEL INSPECTION OR INSPECTION/ REPLACEMENT	0.2	32441-2EEA0-CAMP	B1A	ZZ1
Sonata Plug in (LF PHEV)	ELABELPH	EMISSION LABEL INSPECTION OR INSPECTION/ REPLACEMENT	0.2	32441-2EEB0-CAMP	B1A	ZZ1

NOTE: Submit Claim on Campaign Claim Entry Screen

Service Procedure:

1. Open hood and check for correct label on appropriate vehicle.

If label is correct, then it is not necessary to replace the emissions label.



Label to the right is for **Sonata Plug-in Hybrid (LF PHEV)**. Compare part number to the highlighted green section of the label.

PART#: 32441-2EEB0-CAMP

HYUNDAI MOTOR COMPANY VEHICLE EMISSION CONTROL INFORMATION		
Conforms to regulations: 2016 MY		
U.S.EPA: T2B2 LDV	OBD: CA II	Fuel: Gasoline
California: LEV- III (SULEV-30) PC	OBD: CA II	Fuel: Gasoline
Group: GHYXV02.01M2	DFI/HO2S(2)/WU-TWC/TWC/EGR/EGRC	
Evap.: GHYXR01251MP	No adjustments needed.	EE
[WARNING]	32441-2EEB0	
None of the performance warranty tests of 40CFR 85, subpart W, is to be performed.		

Label to the right is for **Sonata Hybrid (LF HEV)**. Compare part number to the highlighted green section of the label.

PART#: 32441-2EEA0-CAMP

HYUNDAI MOTOR COMPANY VEHICLE EMISSION CONTROL INFORMATION		
Conforms to regulations: 2016 MY		
U.S.EPA: T2B5 LDV	OBD: CA II	Fuel: Gasoline
California: LEV- III (ULEV-125) PC	OBD: CA II	Fuel: Gasoline
Group: GHYXV02.01K5	DFI/HO2S(2)/WU-TWC/TWC/EGR/EGRC	
Evap.: GHYXR01401KE	No adjustments needed.	EC
[WARNING]	32441-2EEA0	
None of the performance warranty tests of 40CFR 85, subpart W, is to be performed.		

2. Clean surface using 50/50 water alcohol mix over the original label.



3. Apply new, correct label over the existing old label.

Firmly press down on entire label for adhesion.



⚠ CAUTION

Carefully apply new label over existing label.

⚠ WARNING

Attempting to remove label will leave behind a printed message reading 'VOID'.
DO NOT REUSE THIS LABEL

