

Date: June 12, 2017

## SERVICE BULLETIN

**Service Bulletin No.: 2017-0001**

**Product Models Affected:**

EIDorado Amerivan PT MY2016 - MY2017  
Units built between December 2016 – April 2017.

---

**Purpose:**

To install Emergency Release latch on rear hatch.

**Tool(s) / Equipment Required:**

Drill  
Drill bit, 9/64  
Extended Philips head  
T-27 head  
(2) 11 mm wrenches  
Rivet Gun 1/4"  
Air saw / Jig saw  
Tree puller / Flat head screw driver  
Marking Pencil  
Sharpie  
Safety Glasses (PPE)  
Rubber Gloves (PPE)

**Part(s) / Material Required:**

<u>Description</u>	<u>Part Number</u>	<u>Quantity</u>
8x 1/2 Phil Flat Head sds #2 steel	MV00034	4
Cable, AMVRT, Hatch, Emerg. Rel. Cbl	M35110002	1
3/16 x 5/8 .118 - .157 grip rivet plastic	M31507	4
Rear Hatch Emerg. Exit ASM AMVRT	M35110001	1

**Procedures:**

**Rear Hatch Disassembly**

**Step 1:** Carefully pull out all trees and remove screws on rear hatch ABS. Remove ABS from hatch.



**Step 2:** Remove all screws on the latching mechanism.



**Step 3:** Remove all wires and cables from the latching mechanism.



**Step 4:** Take out latching mechanism

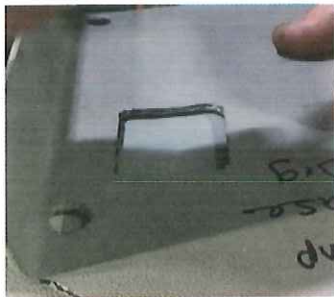
**Emergency Exit Switch and Sign Installation**

**Step 1:** On the back of the Rear Hatch ABS mark the location of the top middle-right tree in order to avoid cutting into this piece.

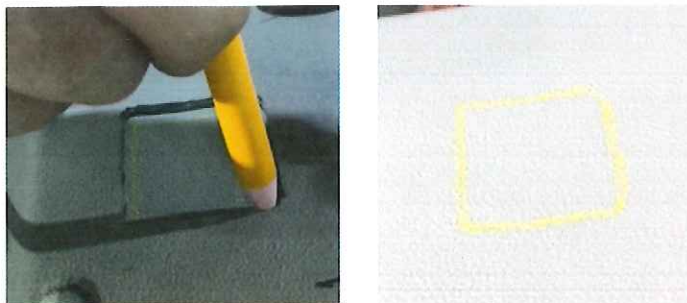


**Step 2:** Line up the left side of the template with the mark that was previously done in step one.

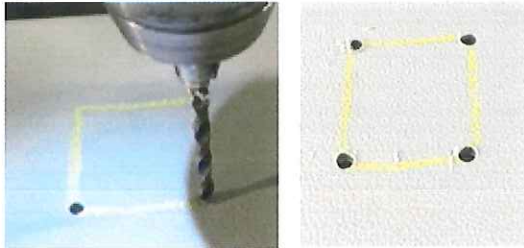
**NOTE:** This is to avoid cutting into the ABS tree and allows cable to reach all the way to the bottom of the ABS.



**Step 3:** Using provided template (see appendix A) draw the outline of the hole needed to install the emergency release hatch.



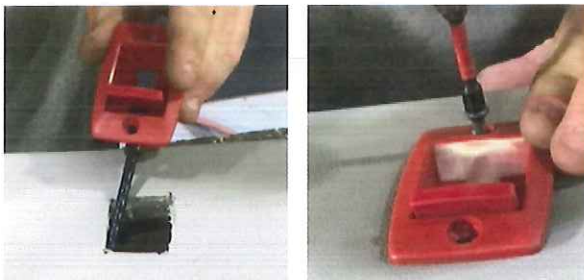
**Step 4:** Drill holes on the four corners of the drawn outline.



**Step 5:** Using an air saw or jig saw cut along the line and remove the center ABS



**Step 6:** Insert the emergency release into the hole created, install screws and feed the line to the bottom of the panel.



**Step 7:** Place EMERGENCY EXIT sign one inch to the right and is even with the latch.



**Step 8:** Once lined up, mark holes and drill.



**Step 9:** Insert plastic rivets and install using rivet gun.



**Step 10:** Re-install rear hatch ABS



### Hatch Latch Assembly

**Step 1:** Line up bracket as shown in figure, mark holes and drill.



**Step 2:** Once drilled, install bracket with screws.



**Step 3:** Remove rubber gasket as shown in figure.



**Step 4:** Drill hole in lower half of tab to insert "offset" cable as shown in figure.



**Step 5:** Re-install wires and cables and insert latch back into housing. See below figures.



**Step 6:** Tighten or loosen cable nut to adjust the opening mechanism



**Step 7:** Re-install light and ABS cover.

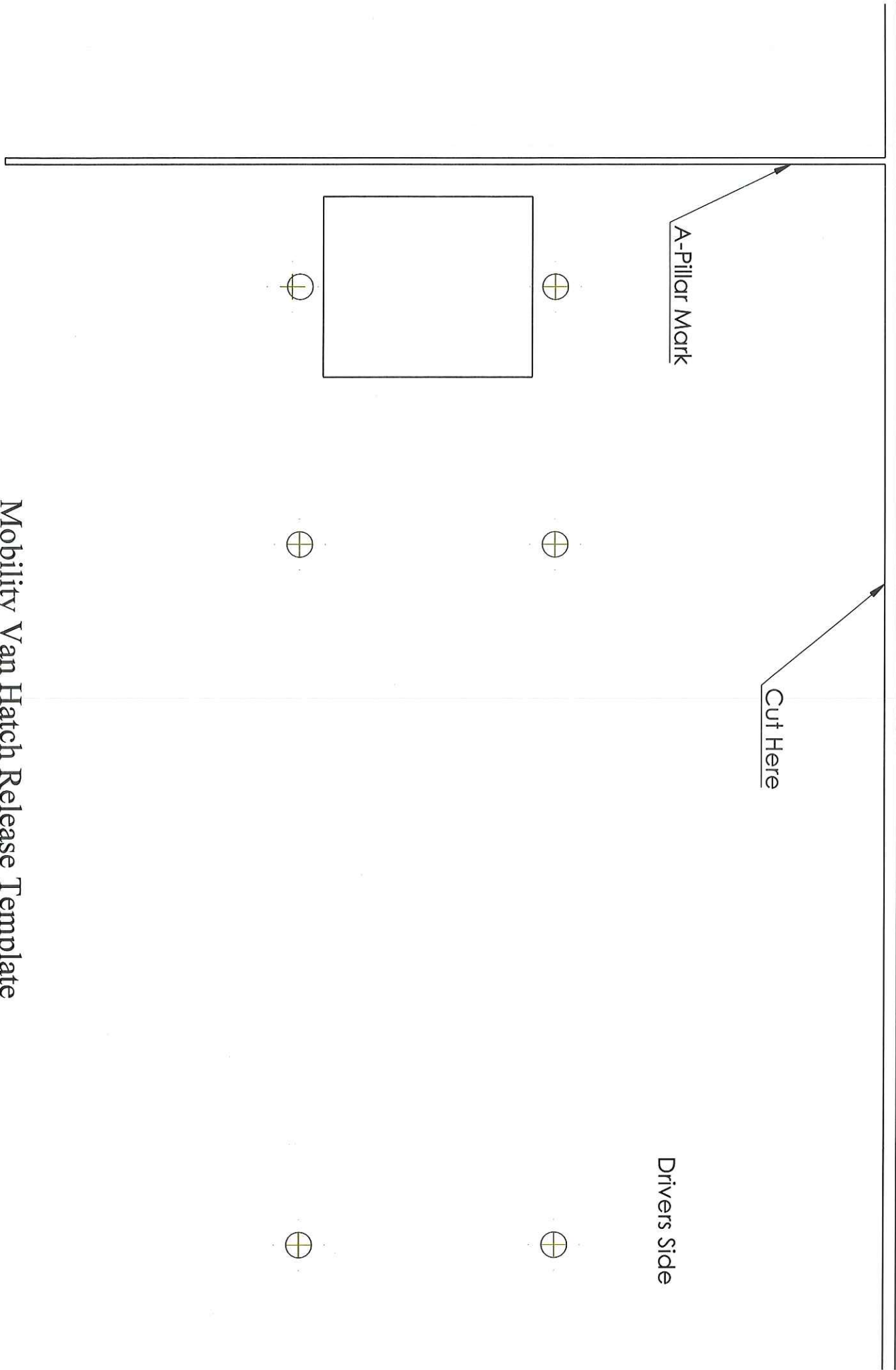


**Contact Information:**

Contact ElDorado Mobility Customer Service, 401 Capacity Drive Longview, Texas 75604; or by call toll free 1-800-323-0135, Cassandra Brown @ 903-475-0665 to schedule your vehicle repair.

The repair time estimate is 30 minutes – 1 hour.

Rear Glass



Mobility Van Hatch Release Template