

# ***Airstream Service Bulletin***

**Bulletin Number: #171**  
**Product Line: Airstream Basecamp**  
**Subject: Refrigerator Compartment Leaks**

Operation Code: **TTSBR8361079**

Labor rate will be 2.0 Hrs.

It has come to our attention that there is an opportunity for excess water to leak into the Basecamp refrigerator compartment through the exterior, vented refrigerator access door. Although these compartments are designed to take some water, there may be a need to take additional steps to prevent excess water from entering the compartment area.

The bulletin will consist of adding sealant to the exterior refrigerator access door, building a sealant ledge to keep water in the protected area and routing a channel to direct this water to the existing drain hole.

Please perform the following procedures to all Basecamp stock and customer units within VIN range .

The procedure below is for sealing the refrigerator compartments in the 2017 Basecamps.

## **RANGE OF VEHICLES INVOLVED:**

2017 Airstream Basecamp Travel Trailers built between 9/08/2016- 3/31/17

Serial number range: **203005-204082**

**Note:** Because our VINs do not run in a contiguous series, there will be trailers in the VIN range that are not affected by this Service Bulletin.

## **Equipment needed:**

- Black Ad Seal, **Part # 365330-04**
- Gray Ad Seal, **Part # 365330-03**
- Refrigerator Access Door 3M Film **Part # 203988**
- Battery Drill
- #30 Drill Bit
- Router
- 3/8" Socket or Nut Driver
- Spray Undercoating or Anti-Wick
- 3/4" #8 screws

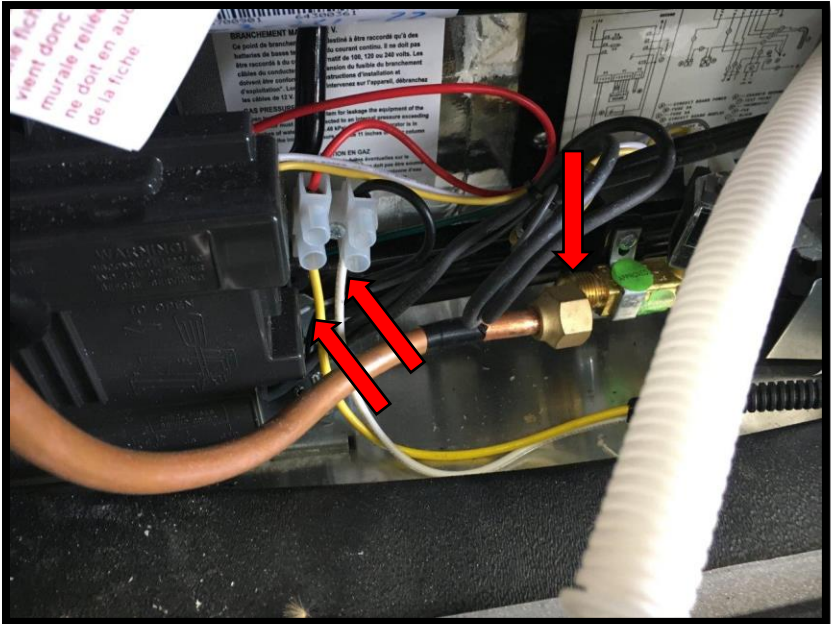
**Step 1:** Turn off gas, remove LP bottles and LP bottle cover. To remove the cover, remove the 4 self-tapping bolts with a 3/8" socket or nut driver.



**Step 2:** Using a flat head screw driver, turn the locking tabs in the corners of the refrigerator access doors. This will allow you to remove the refrigerator access doors.



**Step 3:** Disconnect the LP line, 12 volt power wires and 110 volt power plug for the refrigerator.



**Note:** You may need to loosen and move the fridge to get the 110V power disconnected. See step 4 for refrigerator removal process.

**Step 4:** Remove the refrigerator. To do this, remove the screw caps on the left and right side of the refrigerator and remove the 4 phillips-head screws. You should also put down some kind of protective cover on the floor to avoid damage when removing the refrigerator.



**Step 5 :** Using a battery drill and phillips-head bit, remove the 4 screws holding the upper and lower refrigerator access door frames and remove the frames.



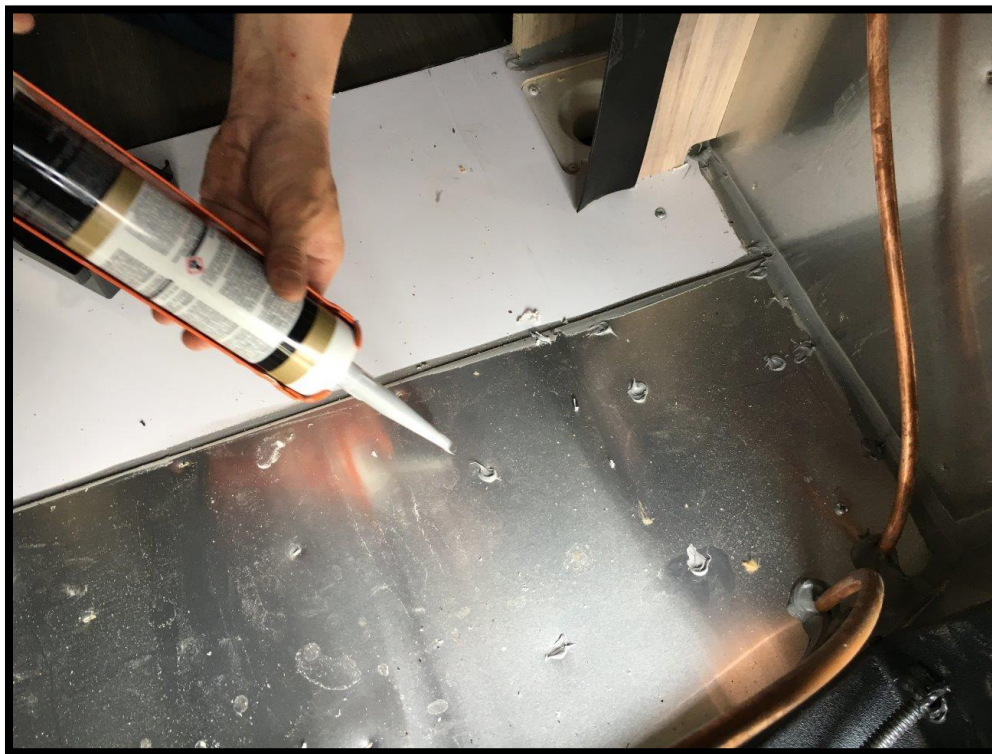
**Step 6:** Using black Ad Seal (part # 365330-04), put a bead of sealant around both upper and lower exterior frames attached to the trailer. Also, put a bead of sealant all the way around the interior side the frame that was removed, like pictured below.



**Step 7:** Re-install the frames. Using a #30 drill bit, pre drill 2 holes on the top of bottom of each frame near the center. Add screws and angle the screws in order to catch the interior aluminum frame. Clean any excess sealant.



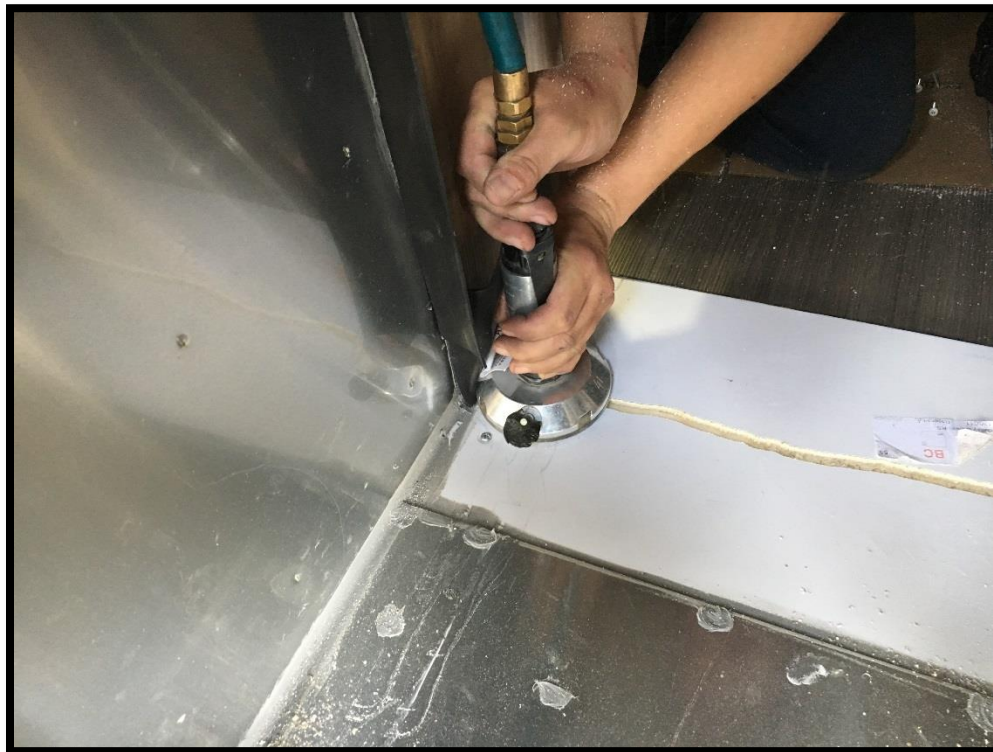
**Step 8:** Inside the refrigerator compartment, using gray Ad Seal (part # 365330-03), seal any penetrations.



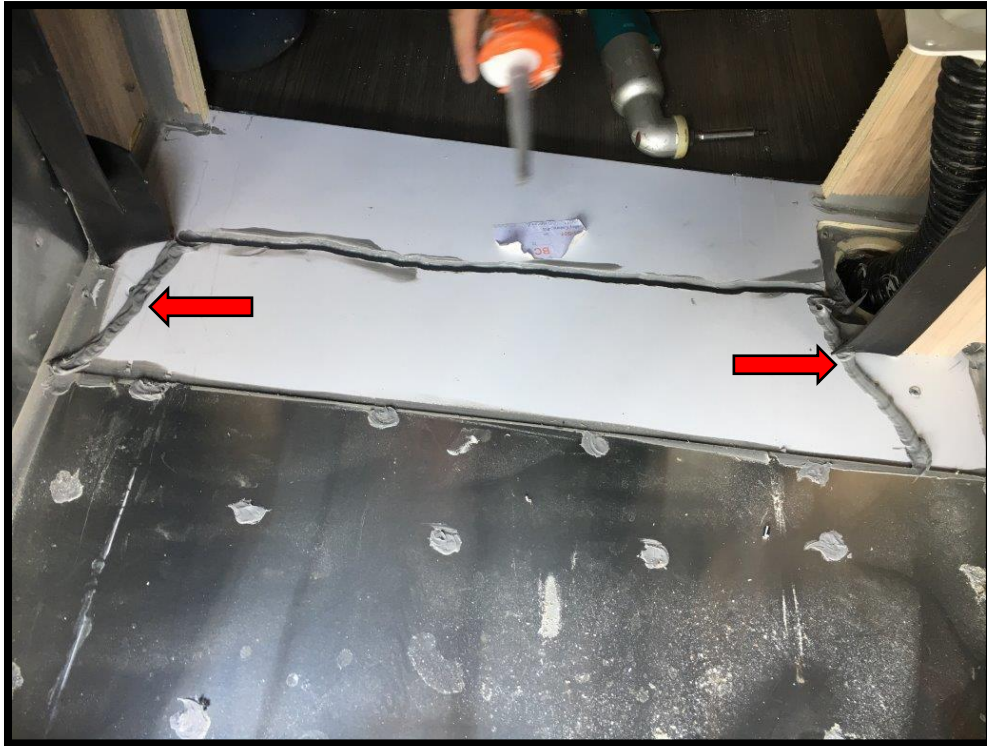
**Step 9:** Remove the drain cup from the refrigerator compartment.



**Step 10:** Using a router, with the cutting bit set at 1/2" cut a channel from the drain area across to the other side of the cabinet. This will allow any excess water to be channeled into the drain.



**Step 11:** Using the gray Ad Seal, lay a thick bead of sealant from the metal edge of the refrigerator cabinet to the channel, as pictured below. This will allow any excess water to be directed into the routed channel and into the drain, protecting the wood of the refrigerator cabinet.



**Step 12:** Lay another thick bead of sealant into the channel. Smooth with your finger to make sure that all sides of the channel are covered. Also seal around the area under the drain and re-install the drain.



**Step 13:** Using spray anti-wick or undercoating, spray the channel and the drain to seal any remaining areas. You can now re-install the refrigerator. Make sure to plug in the 110V power plug, the 12V power wires and reconnect the LP gas line.



**Step 14:** Re-install the refrigerator access doors. Using the die-cut 3M film (part #203988 ), line up the film to cover the area where the door meets the frame. Tape the film in the middle to hold it in place, remove the backing and stick to the door. Smooth out any air bubbles. Repeat on lower door.



***Note:*** When the refrigerator needs to be accessed in the future, the film will have to be cut around the door frame and latches (see below). New film will need to be installed.



**Step 15:** Reinstall LP bottles and cover. Perform LP drop pressure test to verify there are no leaks.

If there are any questions or more instruction is needed please contact our Customer Service Dept. at 937-596-6111 ext. 7401.