

LTB01030NAS1

# TECHNICAL BULLETIN

03 FEB 2017



© Jaguar Land Rover North America, LLC

NOTE: The information in Technical Bulletins is intended for use by trained, professional Technicians with the knowledge, tools, and equipment required to do the job properly and safely. It informs these Technicians of conditions that may occur on some vehicles, or provides information that could assist in proper vehicle service. The procedures should not be performed by 'do-it-yourselfers'. If you are not a Retailer, do not assume that a condition described affects your vehicle. Contact an authorized Land Rover service facility to determine whether this bulletin applies to a specific vehicle.

INFORMATION

---

SECTION:

205-04

---

SUBJECT/CONCERN:

## Squeak/Rubbing Noise From Front Right of Vehicle While Driving

## AFFECTED VEHICLE RANGE:

MODEL:	MODEL YEAR:	VIN:	ASSEMBLY PLANT:
Discovery Sport (LC)	2017 Onwards	606801 Onwards	Halewood
Range Rover Evoque (LV)	2017 Onwards	136146 Onwards	Halewood

## MARKETS:

NAS

## CONDITION SUMMARY:

## SITUATION:

A squeak and/or rubbing noise from the front right of the vehicle while driving may be evident.

## CAUSE:

This may be caused by reduced clamping load on the front right halfshaft bearing outer race due to incorrect assembly or components which are not to specification.

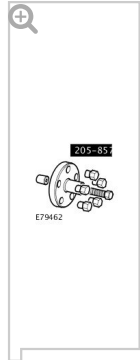
## ACTION:

Should a Customer express this concern, follow the Service Instruction below.

## PARTS:

PART NUMBER	DESCRIPTION	QUANTITY:
LR077915	Front Bearing Retainer	1
BYH500040	Captive Washer Nut	2

# TOOLS:



**205-857**  
Rem  
over,  
Half  
haft



**205-872**  
Installer,  
Transfer  
Case Seal



**303-1300**  
Remover  
Crankshaft Seal



**307-595**  
Installer,  
Intermediate Shaft Seal

---

**WARRANTY:**

**NOTES:**

- Repair procedures are under constant review, and therefore times are subject to change; those quoted here must be taken as guidance only. Always refer to TOPIx to obtain the latest repair time.
- DDW requires the use of causal part numbers. Labor only claims must show the causal part number with a quantity of zero.

DESCRIPTION	SRO	TIME (HOURS)	CONDITION CODE	CAUSAL PART
Halfshaft Bearing Retainer - Front Right - Inspect and Renew - Discovery Sport (L550)	47.10.89.30	0.3	7	LR077915
Halfshaft Bearing Retainer - Front Right - Inspect and Renew - Range Rover Evoque (L538)	47.10.89.30	0.3	7	LR077915
Shaft With Both Joints - RH - Renew - Discovery Sport (L550; GTDi 2.0L Petrol)	47.10.02	0.6	7	LR077915
Shaft With Both Joints - RH - Renew - Range Rover Evoque (L538; GTDi 2.0L Petrol)	47.10.02	0.5	7	LR077915

**NOTE:**

Normal Warranty procedures apply.

## SERVICE INSTRUCTION:

1

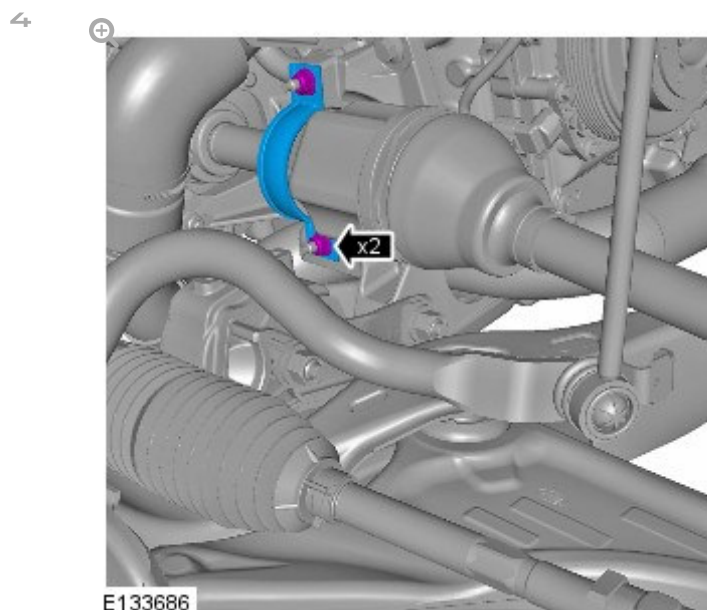
**WARNING:**

**Make sure to support the vehicle with axle stands.**

Raise and support the vehicle (see TOPIx Workshop Manual section 100-01: General Information - Jacking and Lifting).

- 2 Rotate the front right wheel and halfshaft to check for harshness and/or a squeak or rubbing noise from the halfshaft bearing to confirm this is the cause of the Customer concern.
  - If no harshness and/or a squeak or rubbing noise from the halfshaft bearing is not evident, do not continue with this Service Instruction.
    - Investigate and repair as a separate claim.
  - If harshness and/or a squeak or rubbing noise from the halfshaft bearing is evident, go to Step 3.

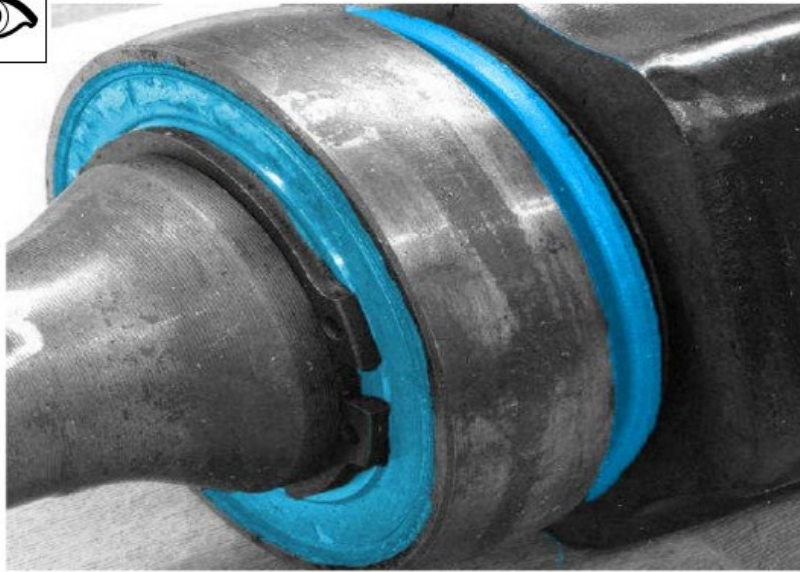
- 
- 3 Remove the front right wheel (see TOPIx Workshop Manual section 204-04: Wheels and Tires - Removal and Installation).



Remove the front right halfshaft bearing retainer.

---

5



E202296

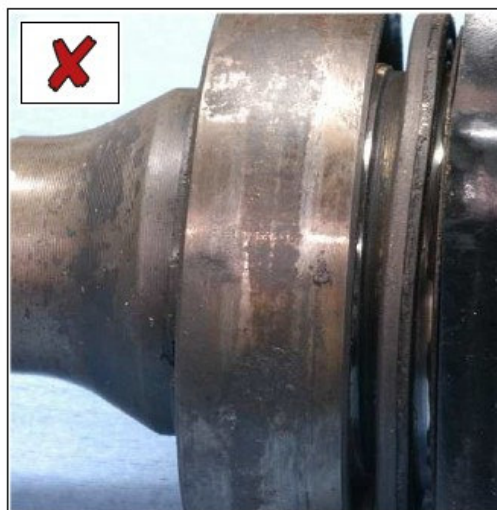
Visually inspect the halfshaft bearing outer seals to check they are not out of position or damaged.

- If either seal is damaged or out of position, go to Step 7.
- If both seals are not damaged and are in the correct position, continue to Step 6.

6

**NOTE:**

**Light scoring to the outer race of the bearing is acceptable.**



E202643

Visually inspect the condition of the halfshaft bearing and bearing housing.

- If bearing rotation is not harsh or noisy and the bearing is not badly scored (✓), go to Step 8.
- If bearing rotation is harsh or noisy and/or the bearing is badly scored (X), go to Step 7.

7

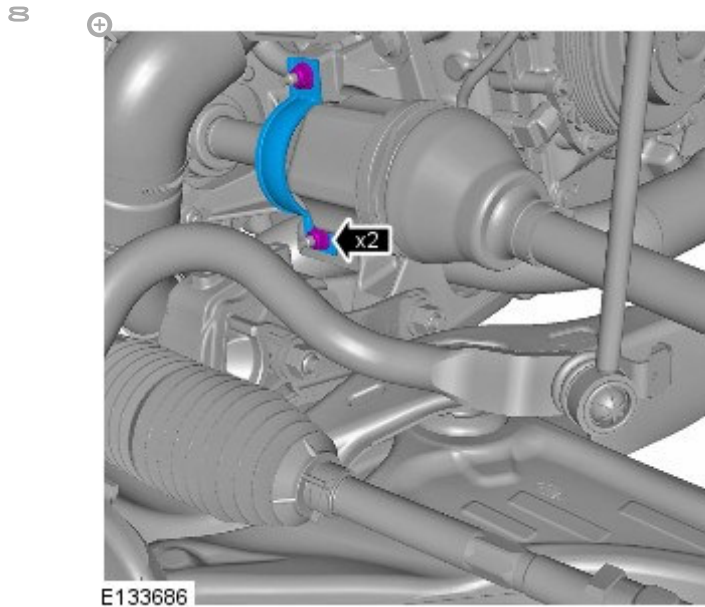
**NOTE:**

**The halfshaft and bearing should not be replaced unless bearing rotation is harsh and/or noisy or if outer bearing seals are damaged or displaced.**

Replace the front right halfshaft (see TOPIx Workshop Manual section 205-04: Front Drive Halfshafts - Front Halfshaft RH).

- A new bearing retainer and captive washer nuts must be used when installing the new halfshaft (Step 8).





Install a new halfshaft bearing retainer and captive washer nuts.

- Torque: **25 Nm**.

---

⇒ Install the front right wheel (see TOPIx Workshop Manual section 204-04: Wheels and Tires - Removal and Installation).

---

10 Lower the vehicle.