



# Service Bulletin

## TECHNICAL

**Subject:** No-Start, Dead Battery, Battery Drain or Autostop Inoperative

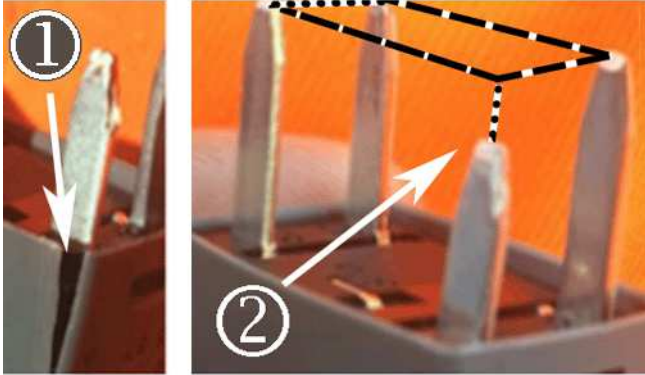
Brand:	Model:	Model Year:		VIN:		Engine:	Transmission:
		from	to	from	to		
Chevrolet	Malibu (VIN Z)	2016	2016			All	All

<b>Involved Region or Country</b>	North America and Israel
<b>Additional Options (RPO)</b>	Equipped with ENG CONTROL-STOP/START SYS, CONVENTIONAL AT, CONVENTIONAL MT OR BRAKE RELEASE LATE RESTART (RPO KL9)
<b>Condition</b>	Some customers may comment on reduced cranking power, no-start condition or dead battery. They may also comment that the Autostop is inoperative.
<b>Cause</b>	Technicians may find a damaged Retained Accessory Power (RAP) relay in the Instrument Panel Fuse Block.

### Correction

Follow standard diagnostic procedures. Refer to *Diagnostic System Check - Vehicle* in SI.

If normal diagnostics do not resolve the customer concern, inspect the KR76 Retained Accessory Power (RAP) relay in the X51A Instrument Panel Fuse Block for uniform relay blade length and position.



Inspect the relay case for cracks (1) or obvious damage. If one blade (2) appears to be pushed into the relay body, this can cause an electrical short.

To correct this concern, replace the RAP relay and verify repairs.

If the vehicle has the KL9 Option, the learn procedure needs to be completed on the Battery Sensor Module. It will be necessary to park the vehicle for 3 hours after the vehicle's system sleep cycle and without being driven to allow the learn procedure to be completed on the Battery Sensor Module. Battery Sensor Module Battery State Information can be found in ECM/Data Display/Stop/Start System Data. If the parameter reads "Available" then the learn has been completed. If the parameter reads "Not Available," then the learn is required to enable stop/start operation.

**Note:** Once the learn has been completed, it is necessary to crank the engine to update the data display to change from Not Available to Available. If the repair is a non-Stop/Start repair and the vehicle is being returned to the customer, advise the customer that the vehicle will not Stop/Start until the vehicle has sat for 3 hours undisturbed after the system sleep cycle.

### Parts Information

Description	Part Number	Qty
Retained Accessory Power (RAP) relay	Refer to the Electronic Parts Catalog (EPC)	1

### Warranty Information

Labor Operation	Description	Labor Time
5430510	Relay Replacement	0.4 hr

<b>Version</b>	2
<b>Modified</b>	Jan. 30, 2017 – adding RPO KL9 information to Additional Options (RPO) and under Correction.

Additional Keywords: Start/Stop, Stop/Start

GM bulletins are intended for use by professional technicians, NOT a "do-it-yourselfer". They are written to inform these technicians of conditions that may occur on some vehicles, or to provide information that could assist in the proper service of a vehicle. Properly trained technicians have the equipment, tools, safety instructions, and know-how to do a job properly and safely. If a condition is described, DO NOT assume that the bulletin applies to your vehicle, or that your vehicle will have that condition. See your GM dealer for information on whether your vehicle may benefit from the information.



WE SUPPORT VOLUNTARY TECHNICIAN CERTIFICATION