



SERVICE BULLETIN

Classification: FA12-001f	Reference: NTB12-055f	Date: June 20, 2017
------------------------------	--------------------------	------------------------

CLICKING NOISE FROM FRONT OR REAR AXLE DURING TAKE-OFF/ACCELERATION

This bulletin has been amended. The APPLIED VEHICLES section has been revised. No other changes have been made. Please discard previous versions of this bulletin.

APPLIED VEHICLES:	2010–2018 370Z Coupe and Roadster (Z34)	
	2010–2013 Altima Coupe (CL32)	
	2010–2011 Altima Hybrid (L32H)	2011–2017 Quest (E52)
	2010–2017 Altima Sedan (L32/L33)	2010–2013 Rogue (S35)
	2011–2014 Cube (Z12)	2014–2017 Rogue (T32)
	2011–2017 Juke (F15)	2014–2015 Rogue Select (S35)
	2011–2017 LEAF (ZE0)	2017 Rogue Sport (J11)
	2010–2014 Maxima (A35)	2010–2017 Sentra (B16/B17)
	2016–2017 Maxima (A36)	2014–2017 TAXI
	2010–2014 Murano (Z51)	2007–2017 Versa Sedan (C11/N17)
	2013–2017 NV200 (M20)	2007–2012 Versa Hatchback (C11)
	2010–2017 Pathfinder (R51/R52)	2014–2017 Versa Note (E12)

IF YOU CONFIRM

“Clicking” noise coming from either left or right front/rear CV-type axles during take-off/acceleration.

ACTION

Apply Molykote® M77 grease (P/N 44003-7S000) to the hub bearing surfaces.

NOTE:

- Do not remove the axle from the hub or transmission for this bulletin.
- Refer to the Electronic Service Manual (ESM) for model-specific torque specifications.
 - For 2007-2017 Versa and 2013 LEAF vehicles, see the Service Procedure torque specifications on page 3.

IMPORTANT: The purpose of “ACTION” (above) is to give you a quick idea of the work you will be performing. You MUST closely follow the entire Service Procedure as it contains information that is essential to successfully completing the repair.

Nissan Bulletins are intended for use by qualified technicians, not 'do-it-yourselfers'. Qualified technicians are properly trained individuals who have the equipment, tools, safety instruction, and know-how to do a job properly and safely. NOTE: If you believe that a described condition may apply to a particular vehicle, DO NOT assume that it does. See your Nissan dealer to determine if this applies to your vehicle.

SERVICE PROCEDURE

NOTE: The photos in this procedure are examples and may not look exactly like the vehicle you are working on.

1. Remove the front or rear (depending on model) wheel bearing Cotter Pin and Lock Nut from the axle.

NOTE: Do not remove the axle from the hub or transmission for this bulletin.

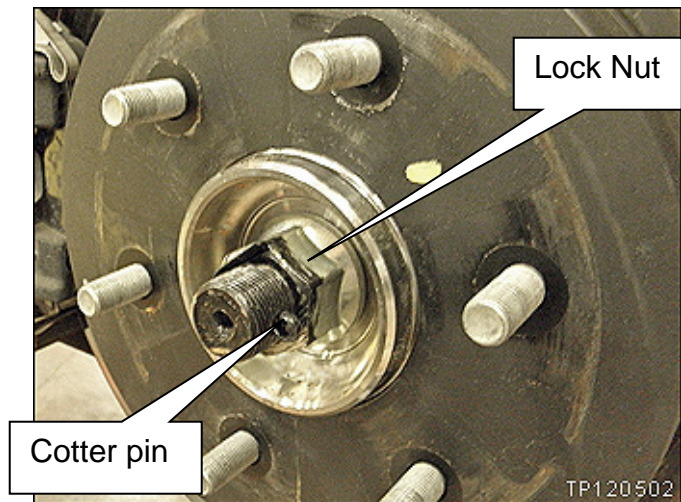


Figure 1

2. Push axle back to allow application of Molykote® M77 Grease.
3. Apply a moderate coat of Molykote® (P/N 44003-7S000) to the entire (front or rear) wheel hub bearing surface (see Figure 2).
4. Re-install the (front or rear) wheel bearing Lock Nut and Cotter Pin.

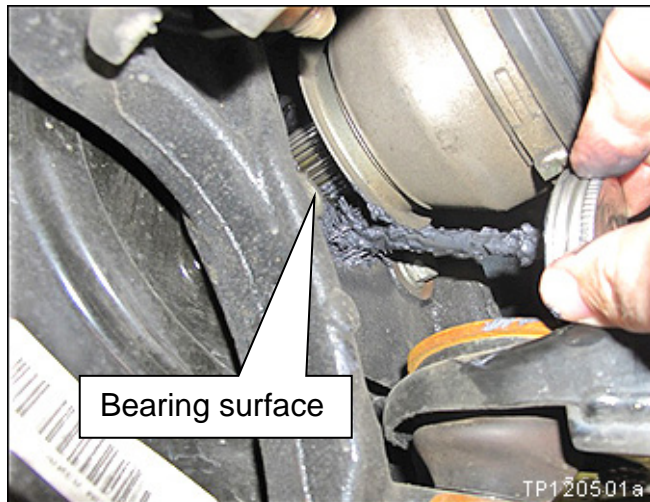


Figure 2

- Refer to the model-specific ESM for wheel bearing Lock Nut replacement requirements and torque specifications.
- For LEAF vehicles: Install the washer listed in the PARTS INFORMATION before installing the new Lock Nut.

IMPORTANT: Please see page 3 for important torque information on:

- **2007-2017 Versa (Hatchback, Sedan, Note)**
- **2013 LEAF**

IMPORTANT (for 2007-2017 Versa Sedan, Versa Hatchback, Versa Note only):

- Tighten the center Lock Nut to 180 N•m (18.4 kg-m, **133 ft-lb**) with a torque wrench.
 - If the center Lock Nut is tightened more than 180 N•m (18.4 kg-m, **133 ft-lb**), the clicking noise could occur.
 - If the center Lock Nut is tightened less than 180 N•m (18.4 kg-m, **133 ft-lb**), looseness could occur.
 - If the center Lock Nut is reused, the clicking noise could occur.

IMPORTANT (for 2013 LEAF only):

- Install the washer.
- Tighten the center Lock Nut to 121 N•m (12.3 kg-m, **89 ft-lb**) with a torque wrench.
 - If the center Lock Nut is tightened more than 121 N•m (12.3 kg-m, **89 ft-lb**), the clicking noise could occur.
 - If the center Lock Nut is tightened less than 121 N•m (12.3 kg-m, **89 ft-lb**), looseness could occur.
 - If the center Lock Nut is reused, the clicking noise could occur.

5. Test drive the vehicle to confirm the issue is resolved.

PARTS INFORMATION

DESCRIPTION	PART NUMBER	QUANTITY
Cotter Pin	40073-0L700	As Needed
Molykote M77 Grease	44003-7S000	As Needed (1)
Nut-Lock, Wheel Bearing	(2)	As Needed (3)
Nut-Lock, Wheel Bearing (For LEAF only)	40262-1CA0A	As Needed
Washer (For LEAF only)	40037-1CA0A	As Needed

- (1) Order from your local Parts Distribution Center (PDC).
 (2) Refer to the Electronic Parts Catalogue (FAST or equivalent) for model specific part number.
 (3) Refer to the applicable ESM for replacement requirements.

NOTE: P/N 44003-7S000 (Molykote M77 Grease) is considered a shop supply. DO NOT include it on your warranty claim.

CLAIMS INFORMATION

Submit a Primary Part (PFP) line claim using the following claims coding:

ONE SIDE

Versa & Cube

DESCRIPTION	PFP	OP CODE	SYM	DIA	FRT
APPLY GREASE TO FRONT BEARING SURFACE (ON CAR, ONE SIDE)	(1)	MX22AA	ZL	21	0.4

- (1) Reference the FAST part catalog and use front hub bearing part number as the PFP.

Altima, Sentra, Quest, Juke, Rogue, Maxima, Murano, 370Z, LEAF, Pathfinder, NV200, TAXI

DESCRIPTION	PFP	OP CODE	SYM	DIA	FRT
APPLY GREASE TO BEARING SURFACE (ON CAR, ONE SIDE)	(1)	MX22AA	ZL	21	0.5

- (1) Reference the FAST part catalog and use front hub bearing part number as the PFP.

BOTH SIDES

Versa & Cube

DESCRIPTION	PFP	OP CODE	SYM	DIA	FRT
APPLY GREASE TO FRONT BEARING SURFACE (ON CAR, BOTH SIDES)	(1)	MX23AA	ZL	21	0.5

(1) Reference the FAST part catalog and use front hub bearing part number as the PFP.

Altima, Sentra, Quest, Juke, Rogue, Maxima, Murano, LEAF, Pathfinder, NV200, TAXI

DESCRIPTION	PFP	OP CODE	SYM	DIA	FRT
APPLY GREASE TO BEARING SURFACE (ON CAR, BOTH SIDES)	(1)	MX23AA	ZL	21	0.6

(1) Reference the FAST part catalog and use front hub bearing part number as the PFP.

370Z

DESCRIPTION	PFP	OP CODE	SYM	DIA	FRT
APPLY GREASE TO REAR BEARING SURFACE (ON CAR, BOTH SIDES)	(1)	MX23AA	ZL	21	0.7

(1) Reference the FAST part catalog and use front hub bearing part number as the PFP.

