

NEWMAR CORPORATION

WARRANTY DEPARTMENT

RECALL SERVICE BULLETIN

DATE ISSUED	MODEL YEAR(S) AFFECTED	RSB #
4/27/2017	2012 - 2018	477
BRAND		
Bay Star Sport <input type="checkbox"/>	Ventana <input type="checkbox"/>	Essex <input checked="" type="checkbox"/>
Bay Star <input type="checkbox"/>	Dutch Star <input checked="" type="checkbox"/>	King Aire <input checked="" type="checkbox"/>
Canyon Star <input type="checkbox"/>	Mountain Aire <input checked="" type="checkbox"/>	Other <input type="checkbox"/>
Ventana LE <input type="checkbox"/>	London Aire <input checked="" type="checkbox"/>	
DESCRIPTION		
<p>Spartan Motors USA, Inc. has decided that a defect relating to motor vehicle safety exists in specific motor homes built on Spartan chassis. In response, Newmar Corporation is publishing the following recall: NHTSA #17V 195 TC #2017-162.</p> <p>Issue: On certain motorhomes, the ball joints on the independent front suspension may be loose. If not detected, the loose ball joints could separate over time. This could affect vehicle handling and increase the risk of a crash causing injury and/or damage to property.</p> <p>Correction: Spartan service centers will remove and clean the ball joints, apply a thread locker, and then reinstall and torque the ball joints as necessary.</p> <p>Affected Units: See the attached population list for specific unit and VIN numbers.</p>		
RECOMMENDED ACTION		
<p>Repair Procedure: Contact Spartan Motors to schedule the recall procedure at an authorized Spartan service facility. Spartan Motors has provided the work instructions attached to this document. To obtain necessary parts and/or verify the recall status, please call (800)543-4277, and press option "0" to provide the VIN number (last 8 digits) and mileage of the unit. If you have technical questions, please call Spartan Chassis Customer Product Support Department at (800)393-8861.</p> <p>Flat Rate Code: 17V 195 Labor Time: 3.0 hrs. (as determined by Spartan)</p> <p>Note: Newmar will not authorize this repair. Spartan Motors will authorize and schedule this repair. If you need help contacting Spartan Motors, call Newmar at (866)290-5371 for assistance.</p> <p><i>Please read this bulletin in its entirety prior to beginning any diagnosis or repairs.</i></p>		



WHEN YOU KNOW THE DIFFERENCE

NEWMAR CORPORATION

NEWMARCORP.COM

Date: April 5, 2017
Re: Newmar Corporation – Motor Vehicle Recall Notification

Subject: Recall Campaign No.: 17V 195

This notice is sent to you as a Newmar Dealer in accordance with the requirements of the National Traffic and Motor Vehicle Safety Act. Newmar Corporation has decided that a defect which relates to motor vehicle safety exists in specific Newmar recreational vehicles.

The National Traffic and Motor Vehicle Safety Act requires that each vehicle which is subject to a recall campaign of this type must be satisfactorily repaired within a reasonable time after the owner has tendered it for repair. A failure to adequately repair within 60 days after tender of a vehicle is prima facie evidence of failure to repair within a reasonable time. To avoid providing these problematic solutions, every effort must be made to promptly schedule an appointment with each owner and to repair their vehicle as soon as possible. Vehicle owners are being notified of this recall. If the condition is not remedied within a reasonable time, they are instructed on how to contact the National Highway Traffic Safety Administration.

REASON FOR THIS RECALL

Newmar Corporation has decided that a defect which relates to motor vehicle safety exists in specific motorhomes built on Spartan chassis. This recall is in response to notification from Spartan Motors.

On certain motorhomes, the ball joints on the independent front suspension may be loose. Over time, if not detected, the loose ball joints could separate, which could affect vehicle handling and increase the risk of a crash causing injury and/or damage to property. Correction: Spartan service centers will remove, clean, apply thread locker, reinstall and torque the ball joints as necessary.

The vehicle models involved in this recall are:

2012-2018 model year Dutch Star, Mountain Aire, London Aire, Essex and King Aire Class A motorhomes.

These motorhomes require immediate service. Continued use poses a potential safety hazard.

DEALER CAMPAIGN RESPONSIBILITY

Dealers are to provide to all customers/owner vehicles the service of completing this campaign at no charge to the customer/owner regardless of vehicle age, vehicle mileage, or ownership at the time of repair.

REPAIR PROCEDURE

Spartan Motors will provide the work instructions. The ball joints will need to be removed, cleaned, applying thread locker, reinstalled and torqued appropriately.

If you should have any questions please contact the Newmar service department at: 1-866-290-5371.

Thank you for your cooperation.

Sincerely,

Newmar Corporation



WHEN YOU KNOW THE DIFFERENCE

NEWMAR CORPORATION

NEWMARCORP.COM

Date: April 5, 2017
Re: Newmar Corporation – Motor Vehicle Recall Notification

Subject: Recall Campaign No.: 2017-162

This notice is sent to you as a Newmar Dealer in accordance with the requirements of the Canada Motor Vehicle Safety Act. Newmar Corporation has decided that a defect which relates to motor vehicle safety exists in specific Newmar recreational vehicles.

Each vehicle which is subject to a recall campaign of this type must be satisfactorily repaired within a reasonable time after the owner has tendered it for repair. A failure to adequately repair within 60 days after tender of a vehicle is prima facie evidence of failure to repair within a reasonable time. To avoid providing these problematic solutions, every effort must be made to promptly schedule an appointment with each owner and to repair their vehicle as soon as possible. Vehicle owners are being notified of this recall. If the condition is not remedied within a reasonable time, they are instructed to contact Transport Canada.

REASON FOR THIS RECALL

In response to notification from Spartan Motors, Newmar Corporation has decided that a defect which relates to motor vehicle safety exists in specific motorhomes built on Spartan chassis.

On certain motorhomes, the ball joints on the independent front suspension may be loose. Over time, if not detected, the loose ball joints could separate, which could affect vehicle handling and increase the risk of a crash causing injury and/or damage to property. Correction: Spartan service centers will remove, clean, apply thread locker, reinstall and torque the ball joints as necessary.

These motorhomes require immediate service. Continued use poses a potential safety hazard.

Motorhomes included in this recall: Dutch Star, Mountain Aire, London Aire, Essex and King Aire built between 05/24/2011 and 03/09/2017.

DEALER CAMPAIGN RESPONSIBILITY

Dealers are to provide to all customers/owner vehicles the service of completing this campaign at no charge to the customer/owner regardless of vehicle age, vehicle mileage, or ownership at the time of repair.

REPAIR PROCEDURE

Spartan Motors will provide the work instructions.

If you should have any questions please contact the Newmar service department at: 1-866-290-5371.

Thank you for your cooperation.

Sincerely,

Newmar Corporation



Recall Service Bulletin



DATE: April 12, 2017

APPLIES TO: This Recall service bulletin applies to the following model-model year of incomplete chassis equipped with Independent Front Suspensions (IFS) supplied by Reyco Granning and were to be completed as motor homes built between April 20, 2011 and March 1, 2017:

K2 – 2012 through 2018

K3 – 2011 through 2018

K4 – 2017 through 2018

MM – 2011 through 2017

NHTSA/TC Id: **17V-160**

CONDITION: The central steering system ball joints may not have been properly torqued, or secured with **Loctite® 242®**, as installed into the pitman arms.

CORRECTION: Remove, check breakaway torque, and repair if found loose per instructions below.

LABOR ALLOCATION: **Up to 3 hours**

CLASSIFICATION: **V3**

PARTS NEEDED:

<u>QTY</u>	<u>Part Number</u>	<u>Description</u>
1	S-2585-001C	Kit-Service MH IFS Ball Joints

Kit # S-2585-001C Contains:

<u>QTY</u>	<u>Part Number</u>	<u>Description</u>
1	K714259	Reyco Service Kit
1	RSB17-250-003A	Instruction Document

Service Bulletins are intended for use by Professional Technicians only. They are written to guide Professional Technicians in performing service to vehicles of specific nature in conjunction with industry standards. Professional Technicians are appropriately trained on industry standards and have the tools and equipment to perform procedures safely and properly.



Recall Service Bulletin



TOOLS NEEDED:

Side Cutter, Vice Grip, Pliers, 3lb hammer
30mm, 1 5/16" and 1 1/8" socket with 1/2" drive
1 1/2" socket with 3/4" drive
1 1/8" end wrench
Hook style pry-bar and small dull chisel
1/2" clicker style torque wrench (90-100 lbf-ft) - Calibrated
1/2" clicker style torque wrench (155-170 lbf-ft) - Calibrated
1/2" clicker style torque wrench (295-315 lbf-ft) - Calibrated
3/4" clicker style torque wrench (500 to 600 lbf-ft) – Calibrated counter clockwise
1/2" and 3/4" Impact Wrench
Jack stands x two (2) 10t - 12t
Steady vice to hold relay rod for application of 500 lbf-ft breakaway torque
Ball joint tools 40mm: Wrench 708116-02 and Clamp 708116-05.
Loctite® 242® thread-locker (*ensure product is not expired*)

Service Bulletins are intended for use by Professional Technicians only. They are written to guide Professional Technicians in performing service to vehicles of specific nature in conjunction with industry standards. Professional Technicians are appropriately trained on industry standards and have the tools and equipment to perform procedures safely and properly.



Recall Service Bulletin



GENERAL INSTRUCTIONS:

Thoroughly review entire service bulletin before starting work. If there are questions or concerns with steps defined in this service bulletin contact Spartan Motors USA, Inc. Customer & Product Support Group.

All applicable industry safety standards must be followed when performing work identified in this procedure.

Warranty claim invoice to be complete with suspension serial number, VIN number with information of facility that performed the service.

A description of condition found and service performed each side documented.

Any parts replaced/removed, must be returned, using the return material authorization process, for claim payment approval.

If the ball joints are found to be damaged (e.g. torn boots) at any time during the removal or reassembly process, they must be replaced.

Service Bulletins are intended for use by Professional Technicians only. They are written to guide Professional Technicians in performing service to vehicles of specific nature in conjunction with industry standards. Professional Technicians are appropriately trained on industry standards and have the tools and equipment to perform procedures safely and properly.



Recall Service Bulletin



STEP-BY-STEP INSTRUCTIONS:

1. Ensure park brake is set and place wheel chocks behind rear wheels.
2. Lift front of vehicle until front wheels are off of the ground. Properly support vehicle with 10t – 12t jack stands.



3. Steer wheels completely to the left.



Service Bulletins are intended for use by Professional Technicians only. They are written to guide Professional Technicians in performing service to vehicles of specific nature in conjunction with industry standards. Professional Technicians are appropriately trained on industry standards and have the tools and equipment to perform procedures safely and properly.



Recall Service Bulletin



4. Beginning on the right side of the vehicle, remove castle nut from tie rod end that is connected to the relay rod.



5. Place sacrificial 7/8"-14 nut on rod end stud and strike with hammer to un-seat tapered connection.



Service Bulletins are intended for use by Professional Technicians only. They are written to guide Professional Technicians in performing service to vehicles of specific nature in conjunction with industry standards. Professional Technicians are appropriately trained on industry standards and have the tools and equipment to perform procedures safely and properly.



Recall Service Bulletin

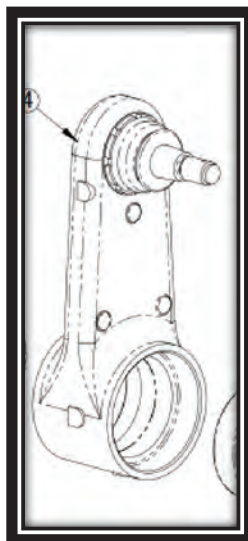


6. Remove tie rod end from relay rod assembly and position tie rod against wheel.



7. The following steps shown pertain to IFS18KS3 and IFS20KS3 (twin gearbox versions). All other units will have an idler arm assembly instead of a slave gear, but the removal of the idler arm equipped units will be similar.

The idler arm assembly is connected via a clevis mount with a 1" bolt/nut, which has to be removed to disconnect the idler arm assembly.



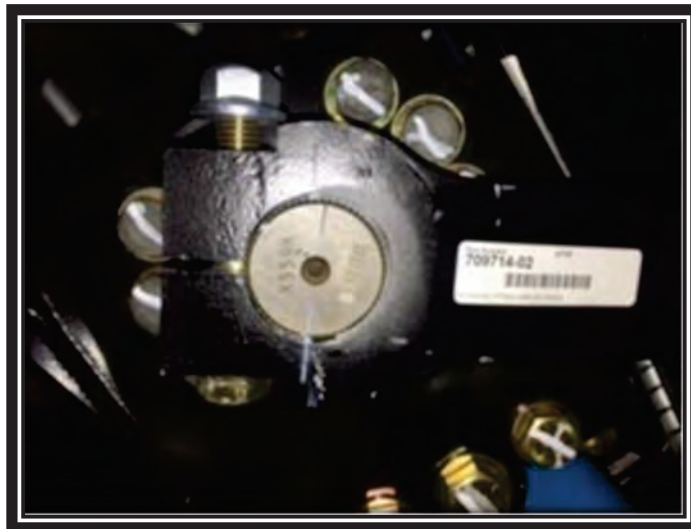
Service Bulletins are intended for use by Professional Technicians only. They are written to guide Professional Technicians in performing service to vehicles of specific nature in conjunction with industry standards. Professional Technicians are appropriately trained on industry standards and have the tools and equipment to perform procedures safely and properly.



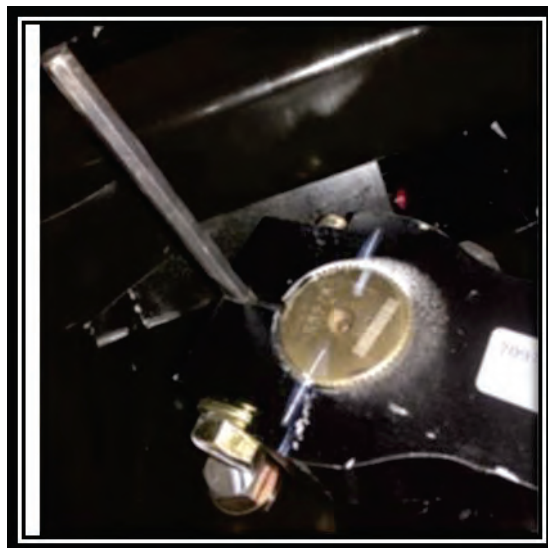
Recall Service Bulletin



8. Mark the pitman arm to steering box output shaft as shown, to ensure correct alignment when re-assembling.



9. Remove pinch bolt nut from right pitman arm (leaving pinch bolt in pitman arm to prevent pitman arm from falling from Sector Shaft.)
10. Using a small chisel, spread pitman arm end.



Service Bulletins are intended for use by Professional Technicians only. They are written to guide Professional Technicians in performing service to vehicles of specific nature in conjunction with industry standards. Professional Technicians are appropriately trained on industry standards and have the tools and equipment to perform procedures safely and properly.



Recall Service Bulletin



11. Remove pinch bolt from pitman arm.



12. Lower pitman arm and position arm to where it is parallel with the relay rod.



Service Bulletins are intended for use by Professional Technicians only. They are written to guide Professional Technicians in performing service to vehicles of specific nature in conjunction with industry standards. Professional Technicians are appropriately trained on industry standards and have the tools and equipment to perform procedures safely and properly.



Recall Service Bulletin



13. Slowly steer wheels completely to the right.



14. Repeat steps 4 – 12.

15. Remove relay rod assembly. (Slide relay rod assembly out towards the left side of the vehicle.)

16. Remove the cotter pin from the ball joint stud.



Service Bulletins are intended for use by Professional Technicians only. They are written to guide Professional Technicians in performing service to vehicles of specific nature in conjunction with industry standards. Professional Technicians are appropriately trained on industry standards and have the tools and equipment to perform procedures safely and properly.



Recall Service Bulletin



17. Remove the castle nut from the ball joint stud, retain for reinstallation. Ensure all washers found under castle nuts are re-installed in their original position.
18. Place sacrificial M20 1.5 nut on ball joint stud. Roll assembly over so sacrificial nut is on bottom resting on a solid surface. Strike relay rod downward with hammer to un-seat tapered connection.



19. Remove ball joints from the relay rod.



Service Bulletins are intended for use by Professional Technicians only. They are written to guide Professional Technicians in performing service to vehicles of specific nature in conjunction with industry standards. Professional Technicians are appropriately trained on industry standards and have the tools and equipment to perform procedures safely and properly.



Recall Service Bulletin



20. Place pitman arm (or idler/bell crank) assembly in a vice.



21. Using 40 mm ball joint tool and castle nut, place over ball joint.

USE CAUTION TO NOT TEAR BOOT



Service Bulletins are intended for use by Professional Technicians only. They are written to guide Professional Technicians in performing service to vehicles of specific nature in conjunction with industry standards. Professional Technicians are appropriately trained on industry standards and have the tools and equipment to perform procedures safely and properly.



Recall Service Bulletin



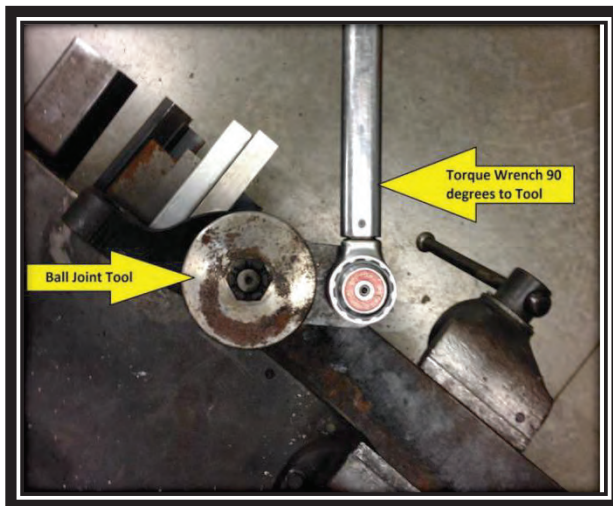
22. For each ball joint, run castle nut down, leaving castle nut slightly loose. **DO NOT RUN DOWN TIGHT**

Note: Tool 708116-05 is used with castle nut to hold tool 708116-02 loosely on the ball joints. Be sure that tooling set up is not binding when loosening, castle nut should come off freely after ball joint is loose.



23. Set torque wrench to 500 lbf-ft. Insert torque wrench in ball joint tool as shown, and apply 500 lbf-ft. of breakaway torque. Torque wrench must be oriented as shown below.

24. If ball joint does not move, begin to reassemble by skipping to Line #34.



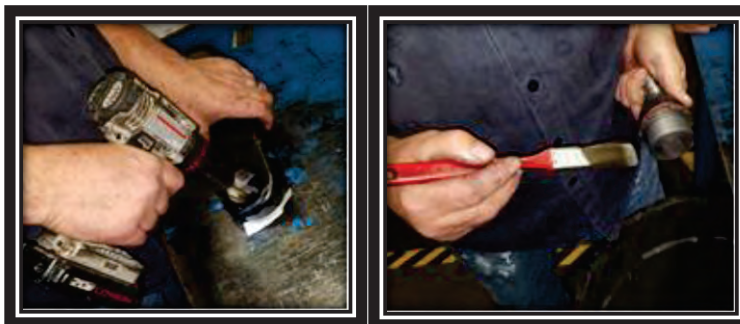
Service Bulletins are intended for use by Professional Technicians only. They are written to guide Professional Technicians in performing service to vehicles of specific nature in conjunction with industry standards. Professional Technicians are appropriately trained on industry standards and have the tools and equipment to perform procedures safely and properly.



Recall Service Bulletin

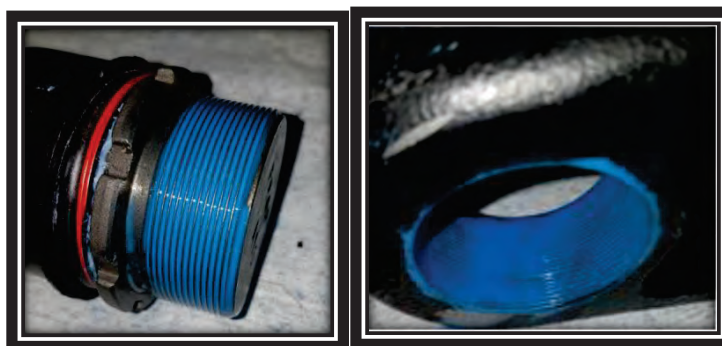


25. If ball joint moves (Breaks loose) before reaching required torque (500 lbf-ft) remove ball joint from pitman arm and clean threads on ball joint and pitman arm using a wire wheel. Clean with denatured alcohol.



26. Ensure threads are clean and dry. **Ensure that the Loctite® 242® is not expired.**

27. Using **Loctite® 242®** apply generously to the external threads of both ball joints and internal threads of the pitman arms. (Ensure that all threads are covered)



28. Install ball joint with **Loctite® 242®** applied into the pitman arm.

29. Screw in by hand until properly seated.

Service Bulletins are intended for use by Professional Technicians only. They are written to guide Professional Technicians in performing service to vehicles of specific nature in conjunction with industry standards. Professional Technicians are appropriately trained on industry standards and have the tools and equipment to perform procedures safely and properly.



Recall Service Bulletin



30. Using 50 mm ball joint tool and castle nut placed over ball joint (Use caution to not tear boot) torque the ball joint to 350 lbf-ft.



31. Be sure that tooling set up is not binding when tightening.
32. Castle nut should come off freely after ball joint is torqued.
33. Ensure that the ball joint is fully seated into the pitman arm.
34. Reinstall the relay rod to the front suspension in reverse order to removal using new cotter pins and the following torque specs:
 - Tie rod castle nut – 90-100 lbf-ft.**
 - Ball joint castle nut – 155-170 lbf-ft.**
 - Pitman arm attachment bolt – 295-315 lbf-ft.**
 - If applicable the drag link castle nut – 90 - 100 lbf-ft.**
35. When tightening castle nuts ensure specified torque is achieved. Advance the nut to align the castle slot with the thru hole to allow cotter pin to be installed. **DO NOT BACK CASTLE NUTS OFF TO INSTALL COTTER PINS.**

Service Bulletins are intended for use by Professional Technicians only. They are written to guide Professional Technicians in performing service to vehicles of specific nature in conjunction with industry standards. Professional Technicians are appropriately trained on industry standards and have the tools and equipment to perform procedures safely and properly.

USA

VIN Number	Production Number	Model Year	Brand	Type	Floor Plan	Chassis Brand
4VZAU1D99HC083041	606336	2017	DS	DP	4369	S
4VZAU1D94HC083108	606384	2017	DS	DP	4369	S
4VZAU1D95HC082601	606087	2017	DS	DP	4381	S
4VZAU1D90HC083106	606347	2017	DS	DP	4369	S
4VZAU1D92HC082782	606274	2017	DS	DP	4326	S
4VZAU1D92HC083110	606311	2017	DS	DP	4369	S
4VZAU1D98HC082799	606351	2017	DS	DP	4326	S
4VZAU1D90HC082666	606210	2017	DS	DP	4326	S
4VZAU1D91HC082532	606073	2017	DS	DP	4369	S
4VZAU1D90HC082781	606273	2017	DS	DP	4310	S
4VZAU1D90HC082831	606301	2017	DS	DP	4369	S
4VZAU1D99HC082715	606251	2017	DS	DP	4018	S
4VZAU1D90HC082120	606032	2017	DS	DP	4369	S
4VZAU1D92HC082779	606359	2017	DS	DP	4018	S
4VZAU1D91HC082529	606205	2017	DS	DP	4369	S
4VZAU1D99HC082617	606174	2017	DS	DP	4369	S
4VZAU1D96HC083191	606422	2017	DS	DP	4369	S
4VZAU1D99HC082830	606364	2017	DS	DP	4369	S
4VZAU1D92HC082801	606284	2017	DS	DP	4369	S
4VZAU1D98HC082561	606102	2017	DS	DP	4018	S
4VZAU1D95HC082937	606116	2017	DS	DP	4369	S
4VZAU1D94HC082637	606204	2017	DS	DP	4369	S
4VZAU1D97HC083152	606377	2017	DS	DP	4369	S
4VZAU1D99HC082438	606067	2017	DS	DP	4369	S
4VZAU1D97HC082499	606114	2017	DS	DP	4369	FL
4VZAU1D96HC082798	606374	2017	DS	DP	4018	S
4VZAU1D90HC082604	606201	2017	DS	DP	4018	FL
4VZAU1D97HC082938	606316	2017	DS	DP	4369	S
4VZAU1D92HC083043	606350	2017	DS	DP	4369	S
4VZAU1D92HC082717	606262	2017	DS	DP	4369	S
4VZAU1D94HC083240	606425	2017	DS	DP	4054	S
4VZAU1D99HC082665	606248	2017	DS	DP	4018	S
4VZAU1D96HC082638	606243	2017	DS	DP	4369	S
4VZAU1D91HC082935	606380	2017	DS	DP	4018	S
4VZAU1D9XHC082447	606075	2017	DS	DP	4369	S
4VZAU1D96HC083241	606434	2017	DS	DP	4018	S
4VZAU1D94HC082718	606264	2017	DS	DP	4369	S
4VZAU1D93HC082662	606263	2017	DS	DP	4369	S
4VZAU1D93HC082659	606159	2017	DS	DP	4018	S
4VZAU1D97HC082602	606105	2017	DS	DP	4369	S
4VZAU1D93HC082936	606310	2017	DS	DP	4369	S
4VZAU1D98HC082737	606265	2017	DS	DP	4369	S
4VZAU1D98HC082530	606170	2017	DS	DP	4369	S
4VZAU1D90HC082716	606267	2017	DS	DP	4054	S
4VZAU1D97HC082616	606106	2017	DS	DP	4369	S

4VZAU1D93HC082533	606089	2017 DS	DP	4054 S
4VZAU1D9XHC082738	606266	2017 DS	DP	4369 S
4VZAU1D96HC083188	606367	2017 DS	DP	4369 S
4VZAU1D9XHC083243	606476	2017 DS	DP	4326 S
4VZAU1D90HC082537	606103	2017 DS	DP	4018 S
4VZAU1D9XHC083226	606401	2017 DS	DP	4018 S
4VZAU1D93HC082600	606133	2017 DS	DP	4369 S
4VZAU1D9XHC082660	606222	2017 DS	DP	4018 S
4VZAU1D91HC082885	606132	2017 DS	DP	4369 S
4VZAU1D90HC082618	606176	2017 DS	DP	4369 S
4VZAU1D9XHC082528	606206	2017 DS	DP	4311 S
4VZAU1D94HC082119	606031	2017 DS	DP	4018 S
4VZAU1D91HC082448	606090	2017 DS	DP	4369 S
4VZAU1D99HC082536	606101	2017 DS	DP	4018 S
4VZAU1D91HC082501	606137	2017 DS	DP	4369 S
4VZAU1D94HC082525	606139	2017 DS	DP	4369 S
4VZAU1D96HC082526	606072	2017 DS	DP	4369 S
4VZAU1D98HC082527	606092	2017 DS	DP	4369 S
4VZAU1D90HC082599	606104	2017 DS	DP	4369 S
4VZAU1D99HC082598	606110	2017 DS	DP	4369 S
4VZAU1D9XHC082531	606173	2017 DS	DP	4369 S
4VZAU1D93HC082564	606091	2017 DS	DP	4369 S
4VZAU1D99HC082603	606138	2017 DS	DP	4369 S
4VZAU1D95HC082615	606140	2017 DS	DP	4018 S
4VZAU1D98HC082639	606178	2017 DS	DP	4018 S
4VZAU1D92HC082619	606194	2017 DS	DP	4369 S
4VZAU1D93HC082614	606224	2017 DS	DP	4018 S
4VZAU1D97HC082664	606160	2017 DS	DP	4018 S
4VZAU1D91HC082661	606218	2017 DS	DP	4369 S
4VZAU1D94HC082640	606093	2017 DS	DP	4369 S
4VZAU1D92HC082667	606261	2017 DS	DP	4369 S
4VZAU1D90HC082800	606281	2017 DS	DP	4369 S
4VZAU1D92HC082832	606298	2017 DS	DP	4369 S
4VZAU1D9XHC082884	606297	2017 DS	DP	4369 S
4VZAU1D98HC082883	606296	2017 DS	DP	4369 S
4VZAU1D94HC082735	606303	2017 DS	DP	4002 S
4VZAU1D9XHC082979	606318	2017 DS	DP	4369 S
4VZAU1D96HC082736	606309	2017 DS	DP	4018 S
4VZAU1D96HC082980	606331	2017 DS	DP	4311 S
4VZAU1D98HC082981	606354	2017 DS	DP	4369 S
4VZAU1D90HC083042	606353	2017 DS	DP	4326 S
4VZAU1D92HC082829	606299	2017 DS	DP	4369 S
4VZAU1D99HC083105	606333	2017 DS	DP	4369 S
4VZAU1D92HC083107	606108	2017 DS	DP	4369 FL
4VZAU1D90HC082862	606366	2017 DS	DP	4018 S
4VZAU1D94HC083111	606369	2017 DS	DP	4369 S
4VZAU1D96HC083109	606109	2017 DS	DP	4369 S

4VZAU1D94HC083187	606344	2017 DS	DP	4369 S
4VZAU1D98HC083189	606387	2017 DS	DP	4369 S
4VZAU1D98HC083225	606097	2017 DS	DP	4002 S
4VZAU1D94HC083190	606400	2017 DS	DP	4369 S
4VZAU1D98HC083242	606368	2017 DS	DP	4369 S
4VZAU1D95HC083294	606378	2017 DS	DP	4018 S
4VZAU1D99HC083296	606421	2017 DS	DP	4054 S
4VZAU1D92HC083303	606392	2017 DS	DP	4054 S
4VZAU1D90HC083297	606429	2017 DS	DP	4369 S
4VZAU1D91HC083244	606427	2017 DS	DP	4369 S
4VZAU1D96HC083305	606438	2017 DS	DP	4369 S
4VZAU1D94HC083318	606462	2017 DS	DP	4018 S
4VZAU1D98HC083306	606455	2017 DS	DP	4311 S
4VZAU1D96HC083319	606404	2017 DS	DP	4018 S
4VZAU1D96HC083384	606405	2017 DS	DP	4018 S
4VZAU1D97HC083295	606449	2017 DS	DP	4369 S
4VZAU1D92HC083320	606456	2017 DS	DP	4369 S
4VZAU1D96HC083322	606479	2017 DS	DP	4369 S
4VZAU1D90HC083395	606451	2017 DS	DP	4369 S
4VZAU1D94HC083321	606433	2017 DS	DP	4369 S
4VZAU1D98HC083385	606446	2017 DS	DP	4018 S
4VZAU1D9XHC083386	606478	2017 DS	DP	4054 S
4VZAU1D99HC083394	606419	2017 DS	DP	4018 S
4VZAU1D92HC083396	606420	2017 DS	DP	4369 S
4VZAU1D97HC083409	606589	2017 DS	DP	4381 S
4VZAU1D91HC083406	606463	2017 DS	DP	4054 S
4VZAU1D90HC083431	606597	2017 DS	DP	4018 S
4VZAU1D91HC083437	606614	2017 DS	DP	4369 S
4VZAU1D92HC083432	606630	2017 DS	DP	4018 S
4VZAU1D93HC083407	606477	2017 DS	DP	4018 S
4VZAU1D93HC083438	606416	2017 DS	DP	4369 S
4VZAU1D95HC083439	606605	2017 DS	DP	4369 S
4VZAU1D94HC083447	606587	2017 DS	DP	4054 S
4VZAU1D94JC082868	606444	2018 DS	DP	4362 S
4VZAU1D92JC082870	606593	2018 DS	DP	4327 S
4VZAU1D94JC082871	606652	2018 DS	DP	4362 S
4VZAU1E95CC075316	800980	2012 EX	DP	4544 S
4VZAU1E99CC074976	800973	2012 EX	DP	4544 S
4VZAU1E9XCC075585	800995	2012 EX	DP	4544 S
4VZAU1E91CC075586	800996	2012 EX	DP	4544 S
4VZAU1E97CC075320	800982	2012 EX	DP	4544 S
4VZAU1E95CC074814	800969	2012 EX	DP	4544 S
4VZAU1E99CC075612	800997	2012 EX	DP	4544 S
4VZAU1E92CC075404	800975	2012 EX	DP	4544 S
4VZAU1E95CC075252	800979	2012 EX	DP	4544 S
4VZAU1E96CC075325	800981	2012 EX	DP	4544 S
4VZAU1E93CC075296	800983	2012 EX	DP	4544 S

4VZAU1E98CC074676	800957	2012 EX	DP	4544 S
4VZAU1E93CC075489	800984	2012 EX	DP	4544 S
4VZAU1E9XCC074744	800962	2012 EX	DP	4544 S
4VZAU1E90CC075319	800986	2012 EX	DP	4544 S
4VZAU1E91CC075314	800976	2012 EX	DP	4544 S
4VZAU1E90CC074767	800952	2012 EX	DP	4544 S
4VZAU1E9XCC074825	800971	2012 EX	DP	4544 S
4VZAU1E9XCC075490	800989	2012 EX	DP	4544 S
4VZAU1E9XCC074792	800966	2012 EX	DP	4542 S
4VZAU1E9XCC074789	800951	2012 EX	DP	4544 S
4VZAU1E93CC074813	800968	2012 EX	DP	4544 S
4VZAU1E94CC075548	800993	2012 EX	DP	4544 S
4VZAU1E91CC075524	800992	2012 EX	DP	4544 S
4VZAU1E96CC074790	800965	2012 EX	DP	4544 S
4VZAU1E94CC074724	800960	2012 EX	DP	4544 S
4VZAU1E91CC074681	800959	2012 EX	DP	4542 S
4VZAU1E91CC074793	800967	2012 EX	DP	4544 S
4VZAU1E94CC074786	800963	2012 EX	DP	4544 S
4VZAU1E90CC075109	800977	2012 EX	DP	4544 S
4VZAU1E9XCC075523	800985	2012 EX	DP	4544 S
4VZAU1E98CC075522	800988	2012 EX	DP	4544 S
4VZAU1E94DC076345	801017	2013 EX	DP	4544 S
4VZAU1E99DC076065	801008	2013 EX	DP	4544 S
4VZAU1E97DC075609	800998	2013 EX	DP	4547 S
4VZAU1E94DC076037	801007	2013 EX	DP	4547 S
4VZAU1E91DC076559	801023	2013 EX	DP	4547 S
4VZAU1E90DC077248	801032	2013 EX	DP	4547 S
4VZAU1E9XDC075961	801002	2013 EX	DP	4542 S
4VZAU1E95DC076144	801011	2013 EX	DP	4547 S
4VZAU1E92DC077199	801029	2013 EX	DP	4548 S
4VZAU1E98DC076218	801013	2013 EX	DP	4544 S
4VZAU1E92DC076005	801004	2013 EX	DP	4544 S
4VZAU1E96DC077254	801033	2013 EX	DP	4542 S
4VZAU1E91DC076254	801012	2013 EX	DP	4544 S
4VZAU1E97DC077019	801028	2013 EX	DP	4544 S
4VZAU1E92DC075646	801003	2013 EX	DP	4544 S
4VZAU1E98DC076588	801022	2013 EX	DP	4544 S
4VZAU1E99DC076552	801021	2013 EX	DP	4544 S
4VZAU1E99DC076261	801016	2013 EX	DP	4544 S
4VZAU1E90DC076262	801014	2013 EX	DP	4544 S
4VZAU1E90DC075614	801000	2013 EX	DP	4544 S
4VZAU1E97DC076386	801019	2013 EX	DP	4547 S
4VZAU1E99DC075613	800999	2013 EX	DP	4544 S
4VZAU1E9XDC076253	801006	2013 EX	DP	4544 S
4VZAU1E91DC077291	801037	2013 EX	DP	4547 S
4VZAU1E9XDC075491	800991	2013 EX	DP	4544 S
4VZAU1E93DC077146	801030	2013 EX	DP	4544 S

4VZAU1E94DC076409	801018	2013 EX	DP	4544 S
4VZAU1E9XDC077046	801024	2013 EX	DP	4544 S
4VZAU1E92DC076781	801027	2013 EX	DP	4544 S
4VZAU1E98EC076396	801026	2014 EX	DP	4557 S
4VZAU1E92EC078080	801070	2014 EX	DP	4553 S
4VZAU1E99EC078075	801059	2014 EX	DP	4553 S
4VZAU1E95EC077358	801034	2014 EX	DP	4544 S
4VZAU1E92EC077978	801067	2014 EX	DP	4553 S
4VZAU1E90EC077896	801054	2014 EX	DP	4544 S
4VZAU1E94EC077965	801056	2014 EX	DP	4544 S
4VZAU1E93EC078265	801072	2014 EX	DP	4553 S
4VZAU1E9XEC078327	801074	2014 EX	DP	4544 S
4VZAU1E93EC078332	801093	2014 EX	DP	4553 S
4VZAU1E94EC077318	801035	2014 EX	DP	4553 S
4VZAU1E91EC078328	801073	2014 EX	DP	4553 S
4VZAU1E98EC077502	801045	2014 EX	DP	4554 S
4VZAU1E96EC078082	801057	2014 EX	DP	4553 S
4VZAU1E96EC078079	801066	2014 EX	DP	4553 S
4VZAU1E91EC078958	801090	2014 EX	DP	4544 S
4VZAU1E97EC077703	801049	2014 EX	DP	4553 S
4VZAU1E95EC078039	801068	2014 EX	DP	4553 S
4VZAU1E91EC079088	801101	2014 EX	DP	4553 S
4VZAU1E97EC078978	801087	2014 EX	DP	4553 S
4VZAU1E95EC079076	801098	2014 EX	DP	4544 S
4VZAU1E94EC077979	801061	2014 EX	DP	4544 S
4VZAU1E91EC078264	801071	2014 EX	DP	4544 S
4VZAU1E94EC077450	801040	2014 EX	DP	4553 S
4VZAU1E95EC078333	801089	2014 EX	DP	4553 S
4VZAU1E99EC079050	801097	2014 EX	DP	4553 S
4VZAU1E95EC078266	801077	2014 EX	DP	4544 S
4VZAU1E99EC077363	801039	2014 EX	DP	4553 S
4VZAU1E97EC077359	801036	2014 EX	DP	4553 S
4VZAU1E94EC077402	801041	2014 EX	DP	4553 S
4VZVU1E95FC079579	801141	2015 EX	DP	4553 S
4VZVU1E91FC079577	801128	2015 EX	DP	4553 S
4VZVU1E93FC079578	801140	2015 EX	DP	4553 S
4VZVU1E95FC079744	801138	2015 EX	DP	4553 S
4VZVU1E9XFC079318	801124	2015 EX	DP	4553 S
4VZVU1E98FC079706	801136	2015 EX	DP	4503 S
4VZVU1E90FC079120	801106	2015 EX	DP	4553 S
4VZVU1E93FC079743	801146	2015 EX	DP	4553 S
4VZVU1E91FC079563	801133	2015 EX	DP	4503 S
4VZVU1E95FC079873	801156	2015 EX	DP	4553 S
4VZVU1E91FC079580	801148	2015 EX	DP	4553 S
4VZVU1E96FC079705	801131	2015 EX	DP	4553 S
4VZVU1E95FC079811	801155	2015 EX	DP	4553 S
4VZVU1E98FC079348	801129	2015 EX	DP	4503 S

4VZVU1E97FC079583	801145	2015 EX	DP	4553 S
4VZVU1E97FC079079	801113	2015 EX	DP	4553 S
4VZVU1E9XFC079349	801127	2015 EX	DP	4503 S
4VZVU1E95FC079582	801144	2015 EX	DP	4553 S
4VZVU1E98FC079527	801134	2015 EX	DP	4553 S
4VZVU1E9XFC079707	801139	2015 EX	DP	4553 S
4VZVU1E92FC079121	801116	2015 EX	DP	4553 S
4VZVU1E95FC079193	801121	2015 EX	DP	4553 S
4VZVU1E93FC079581	801147	2015 EX	DP	4553 S
4VZVU1E9XFC079576	801135	2015 EX	DP	4553 S
4VZVU1E96FC079073	801102	2015 EX	DP	4503 S
4VZVU1E98FC078491	801100	2015 EX	DP	4503 S
4VZVU1E97FC079762	801149	2015 EX	DP	4553 S
4VZVU1E99FC079794	801143	2015 EX	DP	4553 S
4VZVU1E90FC079795	801159	2015 EX	DP	4553 S
4VZVU1E98FC078684	801096	2015 EX	DP	4553 S
4VZVU1E90FC080042	801164	2015 EX	DP	4599 S
4VZVU1E98FC079656	801126	2015 EX	DP	4501 S
4VZVU1E96FC079428	801132	2015 EX	DP	4503 S
4VZVU1E9XFC079254	801108	2015 EX	DP	4503 S
4VZVU1E9XFC079237	801111	2015 EX	DP	4553 S
4VZVV1E92FC078029	801082	2015 EX	DP	4503 S
4VZVU1E98FC079253	801112	2015 EX	DP	4553 S
4VZVU1E98FC079480	801125	2015 EX	DP	4553 S
4VZVU1E96FC079042	801099	2015 EX	DP	4553 S
4VZVU1E94FC079282	801118	2015 EX	DP	4553 S
4VZVU1E99FC079309	801123	2015 EX	DP	4503 S
4VZVU1E95FC079310	801120	2015 EX	DP	4553 S
4VZVU1E92GC080383	801163	2016 EX	DP	4519 S
4VZVU1E96GC081911	801197	2016 EX	DP	4519 S
4VZVU1E90GC080043	801183	2016 EX	DP	4553 S
4VZVU1E97GC080024	801186	2016 EX	DP	4519 S
4VZVU1E96GC079432	801153	2016 EX	DP	4565 S
4VZVU1E94GC080031	801184	2016 EX	DP	4519 S
4VZVU1E96GC081908	801203	2016 EX	DP	4553 S
4VZVU1E92HC082314	801219	2017 EX	DP	4598 S
4VZVU1E9XHC082285	801212	2017 EX	DP	4519 S
4VZVU1E94HC082556	801221	2017 EX	DP	4519 S
4VZVU1E98HC083113	801226	2017 EX	DP	4519 S
4VZVU1E91HC083082	801227	2017 EX	DP	4519 S
4VZVU1E99HC081130	801196	2017 EX	DP	4553 S
4VZVU1E9XHC082450	801220	2017 EX	DP	4553 S
4VZVU1E96HC082557	801223	2017 EX	DP	4519 S
4VZVU1E9XHC082562	801229	2017 EX	DP	4584 S
4VZVU1E91HC082563	801222	2017 EX	DP	4533 S
4VZVU1E93HC083245	801233	2017 EX	DP	4553 S
4VZVU1E93HC083309	801230	2017 EX	DP	4553 S

4VZVU1E9XHC083324	801232	2017 EX	DP	4553 S
4VZVU1E91HC083325	801234	2017 EX	DP	4553 S
4VZVU1E94HC083397	801231	2017 EX	DP	4519 S
4VZVU1E90JC082866	801239	2018 EX	DP	4537 S
4VZVU1E94CC075177	530119	2012 KG	DB	4584 S
4VZVU1E90CC075239	530125	2012 KG	DB	4584 S
4VZVU1E96CC075343	530124	2012 KG	DB	4584 S
4VZVU1E94CC075406	530137	2012 KG	DB	4584 S
4VZVU1E99CC075191	530120	2012 KG	DB	4584 S
4VZVU1E99CC075353	530128	2012 KG	DB	4584 S
4VZVU1E92CC075386	530135	2012 KG	DB	4584 S
4VZVU1E94CC075227	530123	2012 KG	DB	4584 S
4VZVU1E96CC074743	530099	2012 KG	DB	4584 S
4VZVU1E96CC074791	530110	2012 KG	DB	4584 S
4VZVU1E97CC075139	530118	2012 KG	DB	4582 S
4VZVU1E94CC074823	530115	2012 KG	DB	4582 S
4VZVU1E90CC074768	530109	2012 KG	DB	4584 S
4VZVU1E95CC075110	530117	2012 KG	DB	4584 S
4VZVU1E97CC075321	530131	2012 KG	DB	4584 S
4VZVU1E9XCC074745	530102	2012 KG	DB	4584 S
4VZVU1E90CC074947	530113	2012 KG	DB	4582 S
4VZVU1E95CC074815	530108	2012 KG	DB	4584 S
4VZVU1E94CC074725	530104	2012 KG	DB	4584 S
4VZVU1E97CC075318	530122	2012 KG	DB	4584 S
4VZVU1E91CC075315	530127	2012 KG	DB	4584 S
4VZVU1E98CC074713	530101	2012 KG	DB	4584 S
4VZVU1E92CC075405	530136	2012 KG	DB	4584 S
4VZVU1E90CC075645	530141	2012 KG	DB	4584 S
4VZVU1E90CC075354	530132	2012 KG	DB	4584 S
4VZVU1E98CC074677	530105	2012 KG	DB	4584 S
4VZVU1E94CC074787	530111	2012 KG	DB	4584 S
4VZVU1E91CC074794	530107	2012 KG	DB	4584 S
4VZVU1E98CC074940	530112	2012 KG	DB	4584 S
4VZVU1E92CC075226	530121	2012 KG	DB	4584 S
4VZVU1E95CC075317	530130	2012 KG	DB	4584 S
4VZVU1E93CC075610	530139	2012 KG	DB	4584 S
4VZVU1E93DC077147	530189	2013 KG	DB	4584 S
4VZVU1E96DC076168	530147	2013 KG	DB	4584 S
4VZVU1E98DC076589	530157	2013 KG	DB	4584 S
4VZVU1E95DC076730	530185	2013 KG	DB	4584 S
4VZVU1E93DC077200	530194	2013 KG	DB	4584 S
4VZVU1E99DC076004	530145	2013 KG	DB	4584 S
4VZVU1E93DC076631	530171	2013 KG	DB	4584 S
4VZVU1E99DC076732	530182	2013 KG	DB	4587 S
4VZVU1E95DC075531	530142	2013 KG	DB	4584 S
4VZVU1E95DC076128	530148	2013 KG	DB	4584 S
4VZVU1E94DC076444	530156	2013 KG	DB	4584 S

4VZVU1E93DC076662	530174	2013 KG	DB	4584 S
4VZVU1E96DC076560	530159	2013 KG	DB	4584 S
4VZVU1E90DC077249	530193	2013 KG	DB	4584 S
4VZVU1E91DC076711	530176	2013 KG	DB	4587 S
4VZVU1E90DC076716	530181	2013 KG	DB	4584 S
4VZVU1E95DC076632	530163	2013 KG	DB	4584 S
4VZVU1E99DC076553	530160	2013 KG	DB	4584 S
4VZVU1E93DC076385	530155	2013 KG	DB	4584 S
4VZVU1E91DC076708	530173	2013 KG	DB	4584 S
4VZVU1E91DC076661	530166	2013 KG	DB	4584 S
4VZVU1E96DC077045	530184	2013 KG	DB	4584 S
4VZVU1E96DC077188	530191	2013 KG	DB	4584 S
4VZVU1E99DC076066	530146	2013 KG	DB	4584 S
4VZVU1E91DC077292	530199	2013 KG	DB	4584 S
4VZVU1E95DC075870	530144	2013 KG	DB	4584 S
4VZVU1E94DC076038	530143	2013 KG	DB	4582 S
4VZVU1E97DC076731	530187	2013 KG	DB	4584 S
4VZVU1E9XDC076710	530168	2013 KG	DB	4587 S
4VZVU1E96DC076686	530167	2013 KG	DB	4584 S
4VZVU1E90DC076344	530154	2013 KG	DB	4584 S
4VZVU1E90DC075355	530134	2013 KG	DB	4587 S
4VZVU1E93DC076712	530178	2013 KG	DB	4584 S
4VZVU1E95DC077148	530190	2013 KG	DB	4584 S
4VZVU1E9XDC076612	530158	2013 KG	DB	4584 S
4VZVU1E95DC076713	530169	2013 KG	DB	4584 S
4VZVU1E92DC076717	530186	2013 KG	DB	4584 S
4VZVU1E93DC076614	530162	2013 KG	DB	4584 S
4VZVU1E95DC076226	530150	2013 KG	DB	4584 S
4VZVU1E93DC076709	530175	2013 KG	DB	4584 S
4VZVU1E97DC075644	530140	2013 KG	DB	4584 S
4VZVU1E97DC076227	530151	2013 KG	DB	4584 S
4VZVU1E91DC076613	530161	2013 KG	DB	4584 S
4VZVU1E97DC076714	530179	2013 KG	DB	4588 S
4VZVU1E94EC076395	530183	2014 KG	DB	4593 S
4VZVU1E91EC078167	530232	2014 KG	DB	4593 S
4VZVU1E92EC078078	530228	2014 KG	DB	4593 S
4VZVU1E90EC077365	530203	2014 KG	DB	4593 S
4VZVU1E98EC078084	530226	2014 KG	DB	4584 S
4VZVU1E99EC077364	530202	2014 KG	DB	4584 S
4VZVU1E99EC078076	530216	2014 KG	DB	4593 S
4VZVU1E90EC078791	530253	2014 KG	DB	4593 S
4VZVU1E91EC078752	530248	2014 KG	DB	4584 S
4VZVU1E96EC078455	530243	2014 KG	DB	4593 S
4VZVU1E98EC078411	530242	2014 KG	DB	4593 S
4VZVU1E96EC078083	530223	2014 KG	DB	4593 S
4VZVU1E98EC078456	530240	2014 KG	DB	4593 S
4VZVU1E99EC077316	530196	2014 KG	DB	4593 S

4VZVU1E90EC077981	530213	2014 KG	DB	4593 S
4VZVU1E9XEC078085	530221	2014 KG	DB	4584 S
4VZVU1E94EC078129	530230	2014 KG	DB	4593 S
4VZVU1E98EC078957	530257	2014 KG	DB	4593 S
4VZVU1E95EC078172	530220	2014 KG	DB	4584 S
4VZVU1E9XEC078040	530215	2014 KG	DB	4593 S
4VZVU1E96EC078701	530244	2014 KG	DB	4593 S
4VZVU1E96EC077404	530208	2014 KG	DB	4593 S
4VZVU1E97EC077198	530192	2014 KG	DB	4593 S
4VZVU1E90EC077964	530222	2014 KG	DB	4584 S
4VZVU1E99EC078174	530234	2014 KG	DB	4593 S
4VZVU1E99EC078305	530231	2014 KG	DB	4599 S
4VZVU1E9XEC078412	530239	2014 KG	DB	4584 S
4VZVU1E91EC077455	530206	2014 KG	DB	4584 S
4VZVU1E92EC078095	530218	2014 KG	DB	4584 S
4VZVU1E91EC078489	530241	2014 KG	DB	4584 S
4VZVU1E91EC078041	530225	2014 KG	DB	4584 S
4VZVU1E92EC078498	530238	2014 KG	DB	4584 S
4VZVU1E98EC078800	530252	2014 KG	DB	4593 S
4VZVU1E92EC078128	530229	2014 KG	DB	4593 S
4VZVU1E96EC078410	530237	2014 KG	DB	4599 S
4VZVU1E94EC077403	530201	2014 KG	DB	4593 S
4VZVU1E94EC078700	530249	2014 KG	DB	4593 S
4VZVU1E90EC078077	530219	2014 KG	DB	4584 S
4VZVU1E90EC077317	530197	2014 KG	DB	4584 S
4VZVU1E9XEC077907	530210	2014 KG	DB	4593 S
4VZVU1E93EC078753	530254	2014 KG	DB	4593 S
4VZVU1E95EC078799	530251	2014 KG	DB	4584 S
4VZVU1E94EC077451	530200	2014 KG	DB	4593 S
4VZVU1E92EC078081	530227	2014 KG	DB	4584 S
4VZVU1E92EC078792	530250	2014 KG	DB	4593 S
4VZVU1E95EC078334	530236	2014 KG	DB	4599 S
4VZVU1E9XEC077504	530209	2014 KG	DB	4584 S
4VZVU1E91EC077357	530198	2014 KG	DB	4593 S
4VZVU1E9XEC079026	530258	2014 KG	DB	4593 S
4VZVU1E97EC078173	530233	2014 KG	DB	4593 S
4VZVU1E99EC077980	530212	2014 KG	DB	4593 S
4VZVU1E96EC078021	530217	2014 KG	DB	4584 S
4VZVU1E93EC078042	530214	2014 KG	DB	4593 S
4VZVU1E95EC078849	530245	2014 KG	DB	4599 S
4VZVU1E98FC080175	530314	2015 KG	DB	4599 S
4VZVU1E9XFC079481	530297	2015 KG	DB	4553 S
4VZVU1E91FC080146	530303	2015 KG	DB	4553 S
4VZVU1E90FC079764	530305	2015 KG	DB	4553 S
4VZVU1E94FC080223	530320	2015 KG	DB	4553 S
4VZVU1E98FC079043	530270	2015 KG	DB	4553 S
4VZVU1E91FC079482	530295	2015 KG	DB	4553 S

4VZVU1E94FC079430	530293	2015 KG	DB	4553 S
4VZVU1E93FC079239	530281	2015 KG	DB	4553 S
4VZVU1E99FC080234	530321	2015 KG	DB	4553 S
4VZVU1E97FC079535	530317	2015 KG	DB	4599 S
4VZVU1E93FC079080	530277	2015 KG	DB	4553 S
4VZVU1E9XFC079075	530269	2015 KG	DB	4503 S
4VZVU1E99EC079034	530266	2015 KG	DB	4599 S
4VZVU1E91FC079238	530280	2015 KG	DB	4553 S
4VZVU1E93EC079031	530263	2015 KG	DB	4593 S
4VZVU1E98FC079429	530292	2015 KG	DB	4553 S
4VZVU1E92FC079135	530275	2015 KG	DB	4503 S
4VZVU1E99FC079360	530289	2015 KG	DB	4553 S
4VZVU1E94FC079122	530274	2015 KG	DB	4503 S
4VZVU1E95EC079032	530264	2015 KG	DB	4593 S
4VZVU1E90FC079361	530290	2015 KG	DB	4503 S
4VZVU1E94FC078715	530259	2015 KG	DB	4553 S
4VZVU1E96FC079283	530283	2015 KG	DB	4553 S
4VZVU1E98FC079320	530285	2015 KG	DB	4503 S
4VZVU1E97FC079745	530299	2015 KG	DB	4553 S
4VZVU1E92FC080155	530310	2015 KG	DB	4553 S
4VZVU1E91FC079255	530282	2015 KG	DB	4553 S
4VZVU1E91EC079027	530261	2015 KG	DB	4593 S
4VZVU1E95FC078027	530255	2015 KG	DB	4503 S
4VZVU1E95FC079386	530291	2015 KG	DB	4553 S
4VZVU1E91FC079529	530300	2015 KG	DB	4553 S
4VZVU1E90EC079035	530267	2015 KG	DB	4584 S
4VZVU1E99FC079763	530304	2015 KG	DB	4553 S
4VZVU1E96FC079350	530288	2015 KG	DB	4553 S
4VZVU1E97EC079033	530265	2015 KG	DB	4584 S
4VZVU1E95FC079081	530276	2015 KG	DB	4553 S
4VZVU1E99FC079813	530306	2015 KG	DB	4553 S
4VZVU1E97FC079793	530307	2015 KG	DB	4553 S
4VZVU1E91FC079319	530286	2015 KG	DB	4553 S
4VZVU1E9XFC079044	530272	2015 KG	DB	4553 S
4VZVU1E93FC078026	530247	2015 KG	DB	4553 S
4VZVU1E98FC078975	530271	2015 KG	DB	4503 S
4VZVU1E98FC079284	530284	2015 KG	DB	4553 S
4VZVU1E97FC079311	530287	2015 KG	DB	4599 S
4VZVU1E99FC079584	530301	2015 KG	DB	4553 S
4VZVU1E90FC079585	530302	2015 KG	DB	4553 S
4VZVU1E97FC079194	530279	2015 KG	DB	4553 S
4VZVU1E94FC078973	530262	2015 KG	DB	4553 S
4VZVU1E9XFC079528	530298	2015 KG	DB	4599 S
4VZVU1E9XFC078492	530260	2015 KG	DB	4503 S
4VZVU1E96FC078974	530268	2015 KG	DB	4553 S
4VZVU1E91FC079028	530273	2015 KG	DB	4553 S
4VZVU1E93GC080585	530325	2016 KG	DB	4553 S

4VZVU1E98GC081781	530366	2016 KG	DB	4553 S
4VZVU1E91GC081248	530350	2016 KG	DB	4519 S
4VZVU1E91GC080956	530334	2016 KG	DB	4519 S
4VZVU1E92GC081159	530349	2016 KG	DB	4519 S
4VZVU1E91GC079435	530318	2016 KG	DB	4519 S
4VZVU1E90GC081547	530356	2016 KG	DB	4519 S
4VZVU1E95GC081124	530340	2016 KG	DB	4519 S
4VZVU1E97GC081125	530347	2016 KG	DB	4519 S
4VZVU1E92GC081548	530357	2016 KG	DB	4553 S
4VZVU1E97GC080959	530324	2016 KG	DB	4565 S
4VZVU1E96GC081844	530363	2016 KG	DB	4519 S
4VZVU1E94GC081583	530369	2016 KG	DB	4519 S
4VZVU1E98GC081912	530370	2016 KG	DB	4553 S
4VZVU1E99GC081031	530339	2016 KG	DB	4519 S
4VZVU1E90GC081158	530348	2016 KG	DB	4519 S
4VZVU1E9XGC079434	530315	2016 KG	DB	4519 S
4VZVU1E92GC081033	530326	2016 KG	DB	4518 S
4VZVU1E93GC081266	530353	2016 KG	DB	4519 S
4VZVU1E90GC080348	530322	2016 KG	DB	4519 S
4VZVU1E91GC081265	530352	2016 KG	DB	4519 S
4VZVU1E95GC080670	530337	2016 KG	DB	4553 S
4VZVU1E96GC081584	530367	2016 KG	DB	4565 S
4VZVU1E93GC081123	530332	2016 KG	DB	4519 S
4VZVU1E97GC081397	530346	2016 KG	DB	4519 S
4VZVU1E90GC080687	530335	2016 KG	DB	4519 S
4VZVU1E98GC079433	530313	2016 KG	DB	4519 S
4VZVU1E9XGC081250	530345	2016 KG	DB	4553 S
4VZVU1E94GC081549	530360	2016 KG	DB	4519 S
4VZVU1E9XGC080583	530323	2016 KG	DB	4519 S
4VZVU1E93GC080957	530329	2016 KG	DB	4519 S
4VZVU1E92GC080688	530338	2016 KG	DB	4553 S
4VZVU1E99GC081398	530336	2016 KG	DB	4519 S
4VZVU1E90GC081032	530341	2016 KG	DB	4519 S
4VZVU1E95GC080958	530333	2016 KG	DB	4519 S
4VZVU1E9XGC080650	530327	2016 KG	DB	4519 S
4VZVU1E93GC081249	530351	2016 KG	DB	4519 S
4VZVU1E92GC081582	530362	2016 KG	DB	4519 S
4VZVU1E9XGC081846	530359	2016 KG	DB	4519 S
4VZVU1E9XGC081913	530364	2016 KG	DB	4519 S
4VZVU1E9XHC083114	530397	2017 KG	DB	4598 S
4VZVU1E9XHC083193	530387	2017 KG	DB	4533 S
4VZVU1E9XHC082559	530379	2017 KG	DB	4533 S
4VZVU1E98HC082978	530394	2017 KG	DB	4519 S
4VZVU1E98HC082558	530378	2017 KG	DB	4519 S
4VZVU1E9XHC082805	530388	2017 KG	DB	4519 S
4VZVU1E98HC082219	530375	2017 KG	DB	4533 S
4VZVU1E92HC082216	530371	2017 KG	DB	4519 S

4VZVU1E95HC082565	530381	2017 KG	DB	4553 S
4VZVU1E92HC081132	530361	2017 KG	DB	4519 S
4VZVU1E92HC082278	530372	2017 KG	DB	4519 S
4VZVU1E90HC082277	530373	2017 KG	DB	4584 S
4VZVU1E96HC082803	530383	2017 KG	DB	4519 S
4VZVU1E98HC082804	530384	2017 KG	DB	4519 S
4VZVU1E93HC083083	530404	2017 KG	DB	4519 S
4VZVU1E99HC082939	530376	2017 KG	DB	4553 S
4VZVU1E95HC082887	530386	2017 KG	DB	4584 S
4VZVU1E91HC082370	530382	2017 KG	DB	4519 S
4VZVU1E99HC083007	530400	2017 KG	DB	4584 S
4VZVU1E95HC082369	530374	2017 KG	DB	4519 S
4VZVU1E94HC082833	530385	2017 KG	DB	4519 S
4VZVU1E97HC082888	530391	2017 KG	DB	4519 S
4VZVU1E96HC082669	530392	2017 KG	DB	4519 S
4VZVU1E90HC081131	530365	2017 KG	DB	4584 S
4VZVU1E95HC082498	530377	2017 KG	DB	4513 S
4VZVU1E94HC082797	530380	2017 KG	DB	4553 S
4VZVU1E97HC083006	530401	2017 KG	DB	4519 S
4VZVU1E94HC083044	530393	2017 KG	DB	4519 S
4VZVU1E96HC083045	530389	2017 KG	DB	4519 S
4VZVU1E90HC083154	530390	2017 KG	DB	4519 S
4VZVU1E90HC083221	530399	2017 KG	DB	4519 S
4VZVU1E92HC083222	530403	2017 KG	DB	4519 S
4VZVU1E95HC083246	530408	2017 KG	DB	4519 S
4VZVU1E92HC083298	530406	2017 KG	DB	4533 S
4VZVU1E9XHC083310	530410	2017 KG	DB	4513 S
4VZVU1E95HC083411	530402	2017 KG	DB	4533 S
4VZVU1E99JC082865	530407	2018 KG	DB	4534 S
4VZVU1E92JC082867	530414	2018 KG	DB	4531 S
4VZVU1E96GC080581	501295	2016 LA	DP	4553 S
4VZVU1E95GC081740	501324	2016 LA	DP	4519 S
4VZVU1E98GC080582	501309	2016 LA	DP	4553 S
4VZVU1E94GC081910	501332	2016 LA	DP	4553 S
4VZVU1E98GC081845	501334	2016 LA	DP	4519 S
4VZVU1E97GC080671	501314	2016 LA	DP	4553 S
4VZVU1E99GC080686	501328	2016 LA	DP	4519 S
4VZVU1E98HC083080	501481	2017 LA	DP	4535 S
4VZVU1E96HC082641	501461	2017 LA	DP	4519 S
4VZVU1E98HC082446	501446	2017 LA	DP	4519 S
4VZVU1E96HC082445	501447	2017 LA	DP	4519 S
4VZVU1E93HC082886	501478	2017 LA	DP	4513 S
4VZVU1E91HC082613	501462	2017 LA	DP	4519 S
4VZVU1E96HC082882	501444	2017 LA	DP	4519 S
4VZVU1E94HC082802	501467	2017 LA	DP	4533 S
4VZVU1E92HC082796	501465	2017 LA	DP	4525 S
4VZVU1E95HC082663	501443	2017 LA	DP	4519 S

4VZVU1E90HC081288	501327	2017 LA	DP	4513 S
4VZVU1E94HC081133	501337	2017 LA	DP	4553 S
4VZVU1E99HC082214	501339	2017 LA	DP	4533 S
4VZVU1E95HC082436	501445	2017 LA	DP	4553 S
4VZVU1E93HC082502	501458	2017 LA	DP	4539 S
4VZVU1E9XHC083081	501483	2017 LA	DP	4535 S
4VZVU1E91HC083115	501474	2017 LA	DP	4553 S
4VZVU1E99HC083153	501485	2017 LA	DP	4519 S
4VZVU1E98HC083192	501488	2017 LA	DP	4519 S
4VZVU1E91HC083308	501484	2017 LA	DP	4553 S
4VZVU1E9XHC083307	501486	2017 LA	DP	4519 S
4VZVU1E96JC082869	501498	2018 LA	DP	4534 S
4VZAU1E95GC080599	904441	2016 MA	DP	4503 S
4VZAU1E97GC080684	904446	2016 MA	DP	4519 S
4VZAU1E99GC079438	904363	2016 MA	DP	4553 S
4VZAU1E9XGC080579	904412	2016 MA	DP	4519 S
4VZAU1E97GC079437	904361	2016 MA	DP	4553 S
4VZAU1E94GC080044	904410	2016 MA	DP	4553 S
4VZAU1E96GC080580	904413	2016 MA	DP	4553 S
4VZVU1E92HC082670	904486	2017 MA	DP	4553 S
4VZAU1E96HC081116	904443	2017 MA	DP	4519 S
4VZVU1E94HC082783	904500	2017 MA	DP	4519 S
4VZAU1E97HC080685	904469	2017 MA	DP	4553 S
4VZVU1E90HC082733	904491	2017 MA	DP	4519 S
4VZVU1E91HC082451	904485	2017 MA	DP	4553 S
4VZVU1E92HC082734	904492	2017 MA	DP	4519 S
4VZVU1E95HC082940	904502	2017 MA	DP	4519 S
4VZVU1E96HC082977	904497	2017 MA	DP	4519 S
4VZVU1E91HC082983	904509	2017 MA	DP	4535 S
4VZVU1E90HC083008	904496	2017 MA	DP	4519 FL
4VZVU1E92HC083186	904506	2017 MA	DP	4553 S
4VZVU1E97HC083247	904507	2017 MA	DP	4519 S
4VZVU1E99HC083248	904505	2017 MA	DP	4519 S
4VZVU1E94HC083299	904513	2017 MA	DP	4535 S
4VZVU1E97HC083300	904510	2017 MA	DP	4519 S
4VZVU1E99HC083301	904508	2017 MA	DP	4553 S
4VZVU1E97JC082864	904519	2018 MA	DP	4537 S
4VZVU1E98JC083201	904526	2018 MA	DP	4047 S

Canadian

VIN Number	Production Number	Model Year	Brand	Type	Floor Plan	Chassis Brand
4VZVU1E93HC082452	606054	2017	DS	DP	4054 S	
4VZAU1D93HC082449	606080	2017	DS	DP	4369 S	
4VZAU1D97HC082535	606070	2017	DS	DP	4018 S	
4VZAU1D9XHC082500	606189	2017	DS	DP	4369 S	
4VZAU1D99HC082780	606338	2017	DS	DP	4018 S	
4VZAU1D96HC083112	606325	2017	DS	DP	4369 S	

4VZAU1D96HC083224	606388	2017 DS	DP	4018 S
4VZAU1D94HC083304	606430	2017 DS	DP	4018 S
4VZAU1D95HC083408	606457	2017 DS	DP	4369 S
4VZAU1D95HC082534	606186	2017 DS	DP	4018 S
4VZAU1E92CC074785	800953	2012 EX	DP	4544 S
4VZAU1E98CC074824	800970	2012 EX	DP	4544 S
4VZAU1E97CC074989	800974	2012 EX	DP	4544 S
4VZAU1E92CC075385	800987	2012 EX	DP	4540 S
4VZAU1E92CC075547	800990	2012 EX	DP	4544 S
4VZAU1E9XCC075313	800972	2012 EX	DP	4544 S
4VZAU1E96CC074742	800958	2012 EX	DP	4544 S
4VZAU1E98DC076087	801009	2013 EX	DP	4544 S
4VZAU1E94DC075647	801010	2013 EX	DP	4548 S
4VZAU1E95DC076337	801015	2013 EX	DP	4540 S
4VZAU1E9XDC076513	801020	2013 EX	DP	4542 S
4VZAU1E97DC076520	801005	2013 EX	DP	4544 S
4VZAU1E97EC076681	801031	2014 EX	DP	4554 S
4VZAU1E96EC078972	801080	2014 EX	DP	4544 S
4VZVU1E98FC079074	801103	2015 EX	DP	4553 S
4VZVU1E93FC079192	801115	2015 EX	DP	4503 S
4VZVU1E97FC079812	801157	2015 EX	DP	4503 S
4VZVU1E99FC079133	801105	2015 EX	DP	4503 S
4VZVU1E98GC080145	801187	2016 EX	DP	4519 S
4VZVU1E90HC082313	801214	2017 EX	DP	4519 S
4VZVU1E92CC074822	530116	2012 KG	DB	4584 S
4VZVU1E91CC074990	530114	2012 KG	DB	4582 S
4VZVU1E96CC075407	530138	2012 KG	DB	4584 S
4VZVU1E92CC074769	530103	2012 KG	DB	4584 S
4VZVU1E95CC075267	530129	2012 KG	DB	4584 S
4VZVU1E99CC075305	530126	2012 KG	DB	4584 S
4VZVU1E98CC075408	530133	2012 KG	DB	4584 S
4VZVU1E95DC076176	530152	2013 KG	DB	4588 S
4VZVU1E95DC076338	530153	2013 KG	DB	4584 S
4VZVU1E99DC076715	530177	2013 KG	DB	4584 S
4VZVU1E96DC077255	530180	2013 KG	DB	4588 S
4VZVU1E94DC076685	530164	2013 KG	DB	4584 S
4VZVU1E9XDC075895	530149	2013 KG	DB	4584 S
4VZVU1E98EC077503	530204	2014 KG	DB	4593 S
4VZVU1E96EC077452	530205	2014 KG	DB	4593 S
4VZVU1E93EC077456	530207	2014 KG	DB	4593 S
4VZVU1E90EC077897	530211	2014 KG	DB	4593 S
4VZVU1E94EC078034	530224	2014 KG	DB	4593 S
4VZVU1E9XEC078667	530246	2014 KG	DB	4593 S
4VZVU1E91EC078850	530256	2014 KG	DB	4593 S
4VZVU1E90FC079134	530278	2015 KG	DB	4503 S
4VZVU1E96FC079512	530296	2015 KG	DB	4503 S
4VZVU1E93FC080147	530316	2015 KG	DB	4553 S

4VZVU1E90FC080154	530294	2015 KG	DB	4503 S
4VZVU1E93FC080066	530309	2015 KG	DB	4599 S
4VZVU1E95FC080229	530311	2015 KG	DB	4553 S
4VZVU1E91GC080584	530331	2016 KG	DB	4553 S
4VZVU1E9XGC080597	530328	2016 KG	DB	4519 S
4VZVU1E9XGC080955	530330	2016 KG	DB	4519 S
4VZVU1E96GC081780	530368	2016 KG	DB	4519 S
4VZVU1E99GC081126	530343	2016 KG	DB	4519 S
4VZVU1E95GC081401	530358	2016 KG	DB	4553 S
4VZVU1E9XHC082982	530398	2017 KG	DB	4519 S
4VZVU1E93GC079436	501233	2016 LA	DP	4503 S
4VZVU1E91GC080472	501268	2016 LA	DP	4553 S
4VZVU1E91GC080598	501307	2016 LA	DP	4519 S
4VZVU1E94HC082217	501442	2017 LA	DP	4533 S
4VZVU1E97HC082437	501454	2017 LA	DP	4519 S
4VZVU1E94HC082668	501463	2017 LA	DP	4553 S
4VZAU1E97GC081396	904475	2017 MA	DP	4519 S
4VZVU1E90HC082215	904468	2017 MA	DP	4533 S
4VZVU1E94HC083223	904518	2017 MA	DP	4519 S